

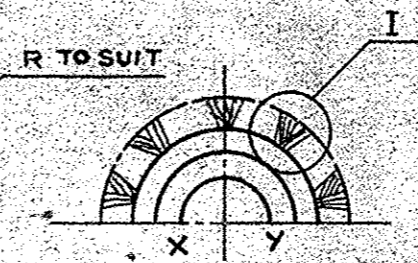
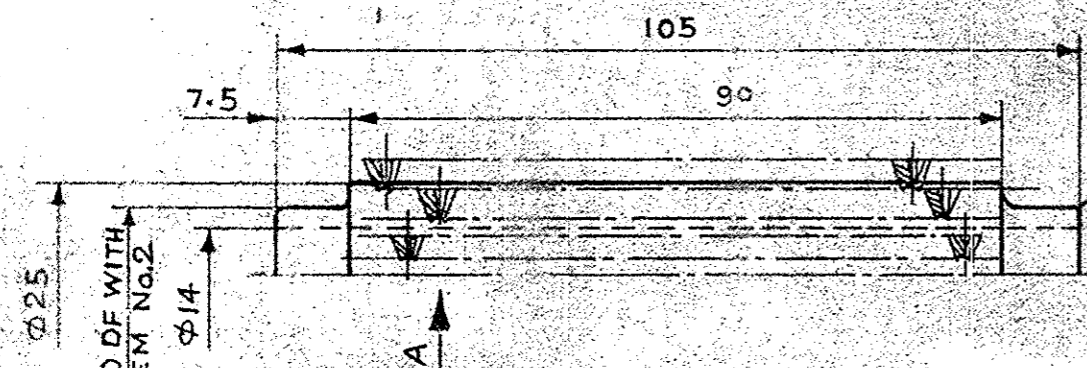
PART No.

2A42/INA/0547

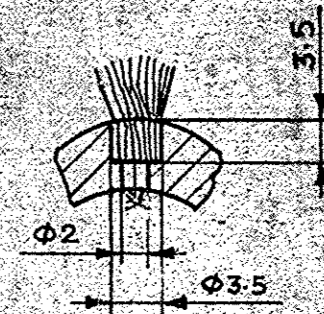
4 SHTS, SHT-4

DRG CONVENTIONS CONFORM TO IS: 696-1972
DIMENSIONS ARE IN MM.

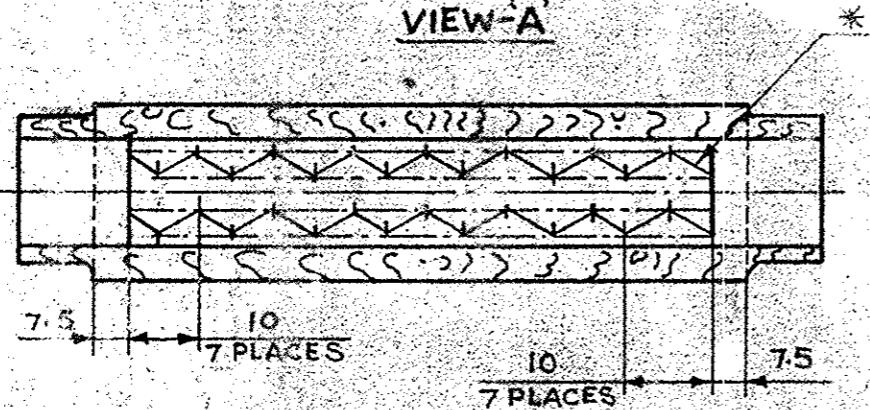
3



DETAIL - I



VIEW - A



NOTES:-

- * BRISTLES SHOULD BE TIED IN 9 PLACES OF 5 ROWS WITH EQUALLY SPACED AS PER DRAWING AND TIED WITH TEMPERED STEEL WIRE (THICK 0.75) RIGIDLY ALONG WITH PERIPHERY 'X-Y'
- TREATED WITH DRYING OIL (OXOL VARNISH) EXCEPT BRISTLE OR GOOD QUALITY OF VARNISH OR LINSEED OIL TYPED TO SPEC IS-77-1976.
- EDGES SHOULD BE BLUNTED TO $R \approx 1.0$
- WOOD WORK TO BE TREATED WITH COPPER NACHTMATE TO SPEC No. IND/SL/0062.

C9054 (A)

22-9-95	18174-W		PROV SEALING CANCELLED & DRG SEALED.		DRAWN:- JNS	CHD:- PNR	ASSY DRG:- 2A42/INA/0547 4SHTS SHT-1	CQA(W) JABALPUR
26-7-92	17234-W		DRG SEALED PROV.		TRACED:- SRSINGH	CHD:- G.P. Shukla	DATE:-	
15-2-92			NEW POLY NEG PREPARED			AHSP	SCALE: N.T.S	
DATE	AUTHORITY	ZONE	NATURE	SIG AHSP	SIG DO	CHIEF D'MAN	DO FOR CQA(W)	ESTD MASS:-
AMENDMENTS				MATERIAL:- SISSOO TO SPEC IND/ME/883(d) PROV.				DESIGN No.
DRG SEALED :- 18174-W 22-9-95				PROTECTIVE FINISH:-				PART No. 2A42/INA/0547 4 SHTS SHT-4
				BRUSH BODY (BORE BRUSH)				D.S. CAT No.