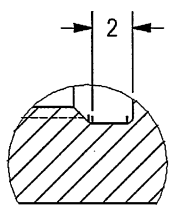
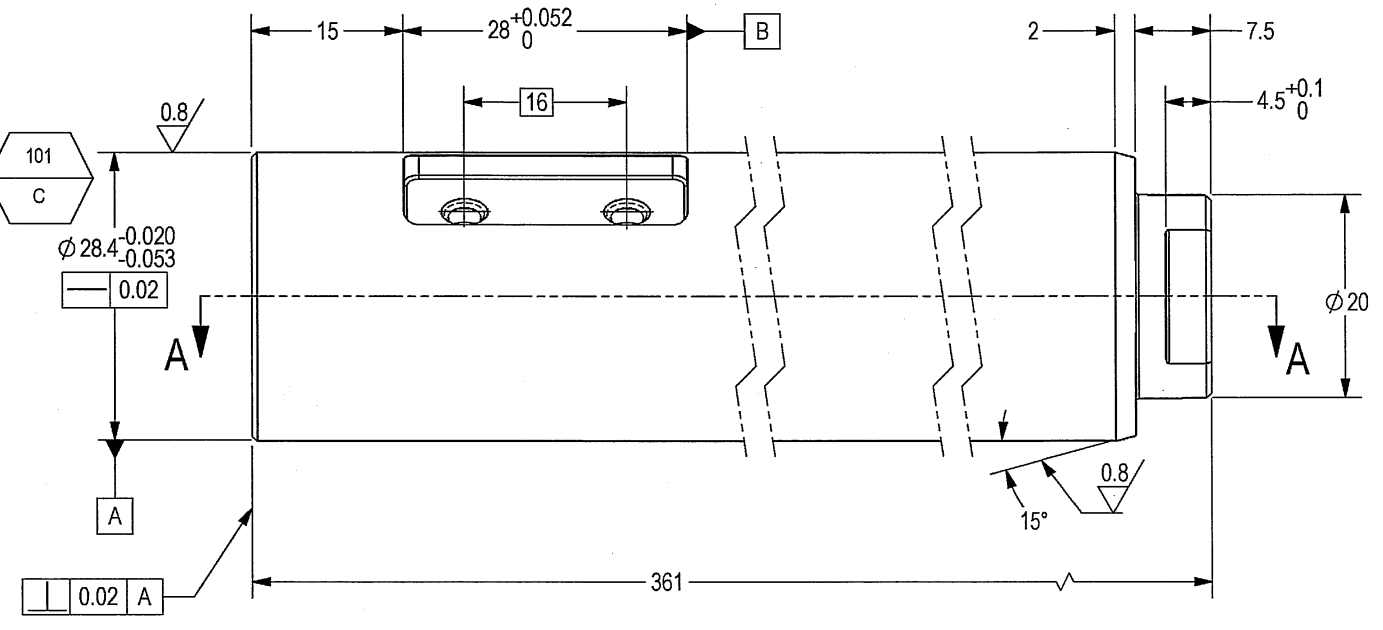
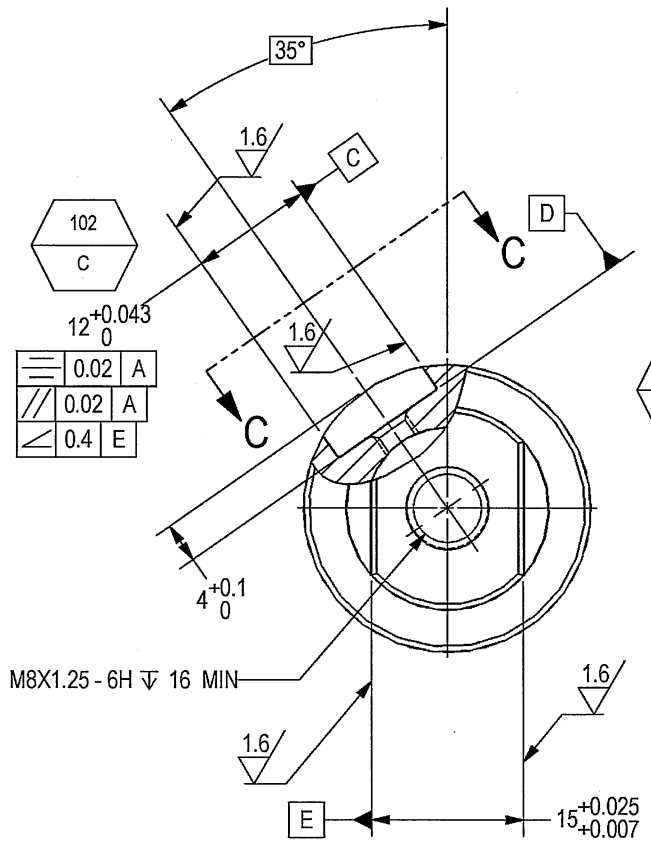


THIS DOCUMENT AND THE INFORMATION CONTAINED IN IT ARE PROPRIETARY AND CONFIDENTIAL TO OFT. NO PERSON OR ENTITY IS ALLOWED TO COPY, REPRINT, REPRODUCE OR PUBLISH ANY PART OF THIS DOCUMENT, NOR DISCLOSE ITS CONTENTS TO OTHERS, NOR MAKE ANY USE OF IT, NOR ALLOW OR ASSIST OTHERS TO MAKE ANY USE OF IT UNLESS BY THE PRIOR WRITTEN EXPRESS AUTHORIZATION OF OFT AND THEN ONLY TO THE EXTENT AUTHORIZED.
 COPYRIGHT-OFT.

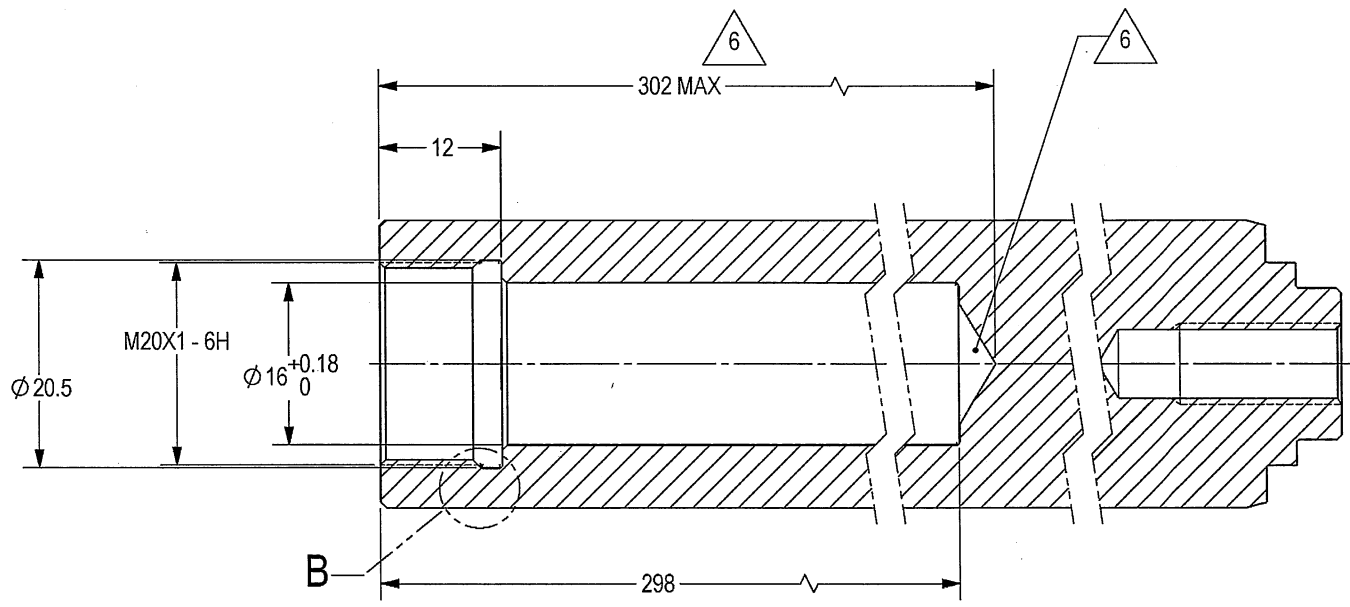
SHEET REV STATUS
 ALL SHEETS ARE THE SAME REVISION

REVISION RECORD				
REV	ECO	DESCRIPTION	DATE	APVD
01		Freeze	08-Aug-13	
02		Freeze	28-Nov-13	
03		Restricted	21-Jul-14	L. Goldshtein
04	VY174/00	Restricted	02-Jun-15	D. Nave
--		Identical To Previous	Released	09-Apr-18
				L. Goldshtein

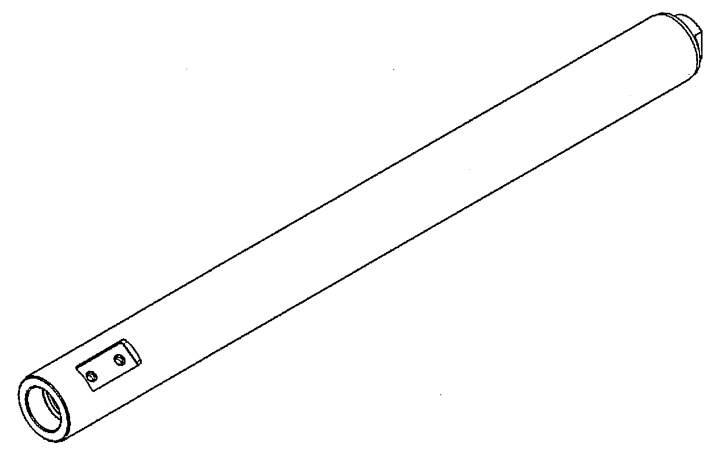
- NOTES:
- INTERPRET THIS DRAWING IAW ASME Y14.100M.
 - MATERIAL: CRES BAR TYPE 17-4PH PER AMS 5643 PURCHASED IN CONDITION H1150.
 - UNLESS OTHERWISE SPECIFIED, UNDEFINED MACHINED FILLET RADII SHALL BE 0.2..0.3.
 - DEBURR AND REMOVE SHARP EDGES, APPROX. 0.3X45 Deg.
 - GENERAL TOLERANCES ACCORDING TO ISO 2768-m.
 - TECHNOLOGICAL DRILL HOLE. FORM AND PRESENCE - OPTIONAL.
 - PASSIVATION TREATMENT PER AMS-2700 METHOD 1 TYPE 8.
 - BAKE PART AFTER PLATING WITHIN 3 HOURS PER AMS-2759/9 TABLE 1 FOR 3 HOURS MINIMUM AT 191 °C.
 - QUALITY ASSURANCE PROVISIONS:
 - QUALITY ASSURANCE PROVISIONS FOR THIS ITEM PER RDMQD00012P.
 - MAJOR CHARACTERISTICS NRS 101 TO 102. PARENTHEICAL FIGURES ARE FOR REFERENCE ONLY.
 - PACKAGING AND PACKING: THE FINISHED PART SHALL BE PRESERVED AND PACKAGED IN ACCORDANCE WITH BEST MANUFACTURER'S COMMERCIAL PRACTICE. IDENTIFY PER MIL-STD-130 PARA 4.1.B, BY LABELING ITS CONTAINER WITH THE PART NUMBER. CHARACTERS MINIMUM TEXT HEIGHT 1.25 MM.



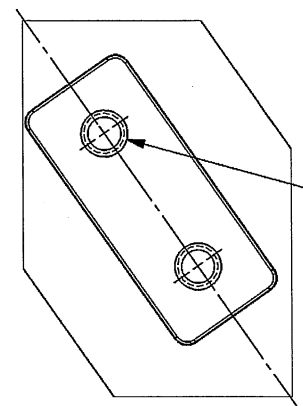
DETAIL B
 SCALE 4 : 1



SECTION A-A



(WEIGHT APPROX. 1.27 Kg.)



VIEW C-C

2X DRILL THRU ONE WALL
 M4X0.7 - 6H THRU ONE WALL
 ⊕ ⊕ 0.3 D B C

SEE ATTACHED MEDIA

UNLESS OTHERWISE SPECIFIED		SIGNATURE	DATE	ORDNANCE FACTORY TIRUCHIRAPPALLI	
DIMENSIONS ARE IN MM PER ASME Y14.5 - 2009		DRAWN	10/1/23	FOR: ROTOR ASSY	
TOLERANCES		CHECKED		OF: 12.7MM SRCG	
LINEAR	ANGULAR	HOS/DDO	Piston 3/1/22	TITLE PISTON INNER	
SEE NOTE 5	SEE NOTE 5	OFFICER/PRODN		SIZE C	CAGE CODE 2291A
1st ANGLE PROJECTION		OFFICER/QC		DWG NO 074263A-00	
SURFACE TEXTURE IN Micro METER		OFFICER/DDO		SCALE 2:1	AUTOMATED DRAWING (SW)
PROJECT OFFICER		PROJECT MODEL 074263A-00 PISTON_INNER		SHEET 1 OF 1	
PLM Control		STATUS WIP			

DWG NO
074263A-00

SH
1