

EMBRITILEMENT RELEASE- DETAIL No.1,2,4 AND AFTER CADMIUM PLATING AND PRIOR TO CHROMATE PASSIVATION, SHALL BE MAINTAINED AT A TEMP. OF 150 TO 200°C FOR HALF AN HOUR TO REMOVE HYDROGEN EMBRITILEMENT.

WORKMANSHIP & FINISH- TO BE FINISHED SMOOTH, CADMIUM PLATED CHROMATE PASSIVATED TO IS:1572,1968-Cd-12.

10	NUT	12 OF 12	1
9A,9B,9C	SCREWS SET COUNTER SUNK HD,	11 OF 12	3,1,1 RESPECTIVELY
8	FASTENING PLATE	10 OF 12	1
7	COVER SCREW	9 OF 12	1
6A	SHOCK ABSORBER	8 OF 12	2
6	COVER	7 OF 12	1
5	WASHER	6 OF 12	1
4	SHUTTER WITH CONES	5 OF 12	1
3	SPRING WASHER	4 OF 12	1
2	LOCK BODY WITH CONES	3 OF 12	1
1	MOUNTING PLATE	2 OF 12	1
—	ASSEMBLY	1 OF 12	—
DETAIL No.	NOMENCLATURE	SHEET No.	No.OFF

DETAIL INDEX

PROOF LOAD:- 7845 N (800 KG)

PERFORMANCE TEST:-

SHOULD BE ADJUSTED IN A MANNER THAT UNDER LOAD OF (150 Gms) SUSPENDED TO THE SHUTTER CONE, THE SHUTTER SHOULD NOT GET RELEASED AND UNDER A LOAD OF (300 Gms), THE SHUTTER SHOULD GET RELEASED.

PACKING:-

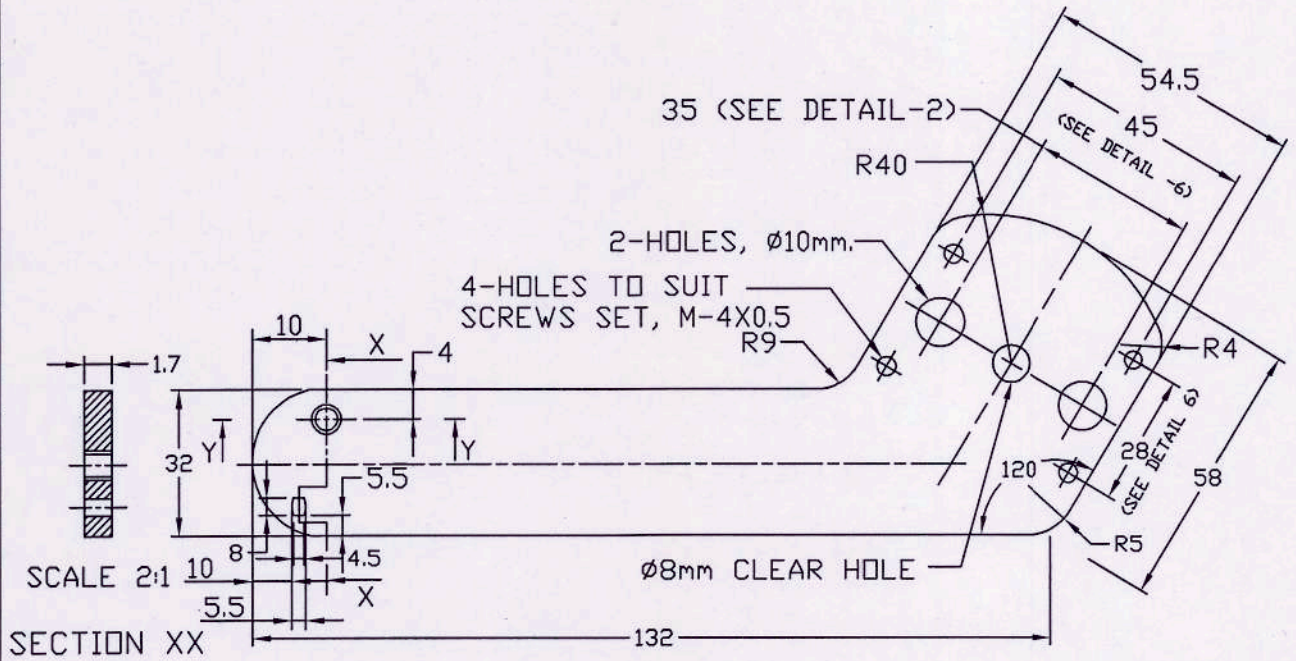
EACH SAMPLE SHALL BE WRAPPED TISSUE PAPER AND 20 Nos. THUS WRAPPED BE PACKED IN A SUITABLE CARTON 10 SUCH CARTONS SHALL BE PACKED IN A C.W.P.(DULY LINED WITH PAPER PACKING WATER -PROOF) ONE SAMPLE EACH CARTON SHALL BE IDENTIFIED BY A LABEL SHOWING NOMENCLATURE AND CAT. No. OF THE STORE AND ALSO THE TRADE MARK /INITIALS OF THE MANUFACTURER AND THE YEAR OF MANUFACTURE EACH CARTON SHALL BE MARKED WITH THE INITIALS OF THE MANUFACTURER BEFORE DESPATCH EACH PACKING CASE SHALL BE LEGIBLY AND INDELIBLY MARKED WITH THE FOLLOWING DETAILS:-

- (i) NOMENCLATURE,CAT.No. OF THE STORE AND THE YEAR OF MANUFACTURE,
- (ii) TOTAL No. OF PACKING CASES AND THE NUMBER OF THE INDIVIDUAL PACKING CASE IN A CONSIGNMENT,
- (iii) No. OF CARTONS IN EACH PACKING CASE AND THE QUANTITY IN EACH CARTON,
- (iv) MASS OF THE PACKING CASE IN Kg,
- (v) ADDRESS OF THE CONSIGNEE AND CONSIGNOR.

SCALE:- N.T.S	A D R D E AGRA	DRN.	C.P.PAL	 PROJ. OFFR./GROUP OFFR. APPROVED PROJ. DIR./GROUP DIR. DRG. No. 2.1.01-29-00
DIMENSIONS IN mm	GROUP- PAS	CHD.	NIROTI	
TOL:- IS:2102 Pt.1(Med.) 1993	ASSEMBLY D-10 'MAIN' PARACHUTE (LOCK,DOUBLE CONED)			
MATERIAL:-				
FINISH:-				
HEAT TREATMENT:-				

Rev.No.	DATE	ZONE	AUTHORITY	BRIEF RECORD	I/C	HEAD GROUP
1		2		3	4	5

1



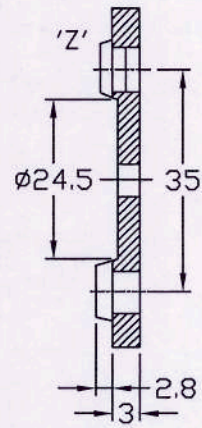
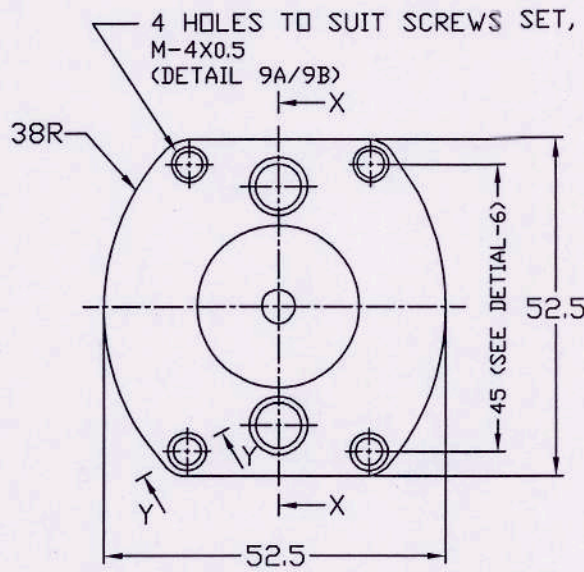
SCALE 2:1
SECTION XX

SECTION YY
CSK HOLE FOR SCEWS SET,
M-4X0.5,DETAIL-9C

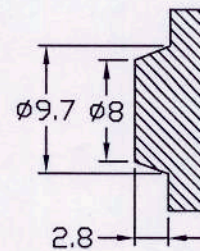
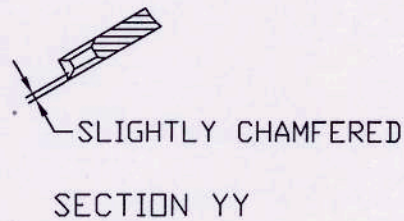
MATERIAL :- SPRING STEEL TO BS:1449, EN - 43G.

Rev.No	DATE	ZONE	AUTHORITY	BRIEF RECORD			<input type="checkbox"/> I/C GROUP CAD HEAD
SCALE:- N.T.S			A D R D E AGRA DRN.,		C.P.PAL		 PROJ.OFFR./GROUP OFFR.
DIMENSIONS IN mm			GROUP:- PAS CHD.		NIROTI		
TOL:- IS:2102 Pt. 1(Med.) 1993			MOUNTING PLATE D-10 'MAIN' PARACHUTE (LOCK,DOUBLE CONED)				APPROVED
MATERIAL:-							 PROJ.DIR./GROUP DIR.
FINISH:-							
HEAT TREATMENT:-							
			DRG. No.		2.1.01-29-01		

2



SECTION-XX



DETAIL AT 'Z'
(ALTERNATIVE DESIGN)
SCALE:- 2:1

1-OFF

MATERIAL:- CHROMIUM MOLYBDENUM
STEEL TO BS:-970-EN-19

HARDNESS:- 311/375 BHN.

Rev.No	DATE	ZONE	AUTHORITY	BRIEF RECORD		□ I/C GROUP CAD HEAD		
SCALE:- N.T.S			A D R D E AGR A DRN.	C.P.PAL		 PROJ.OFFR./GROUP OFFR.		
DIMENSIONS IN mm			GROUP:- PAS	CHD.	NIROTI			
TOL:- IS:2102 Pt. 1(Med.) 1993			LOCK BODY WITH CONES D-10 'MAIN' PARACHUTE (LOCK, DOUBLE CONED)			APPROVED		
MATERIAL:-						 PROJ.DIR./GROUP DIR.		
FINISH:-						DRG. No.		
HEAT TREATMENT:-						2.1.01-29-02		

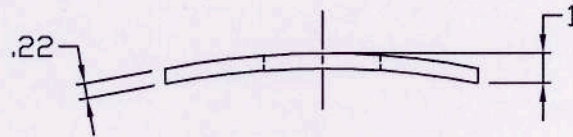
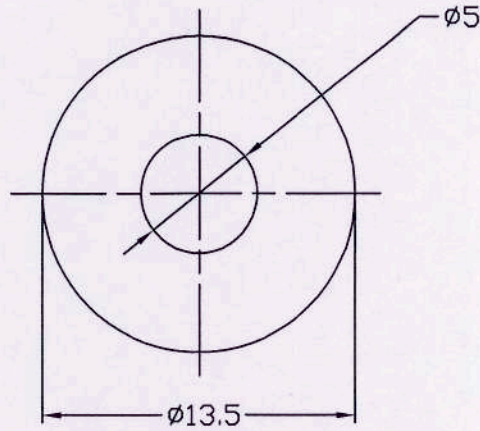
1

2

3

4

3



1-OFF

MATERIAL:- CARBON STEEL,HS-70 TO BS:1449,PT-3A

Rev.No	DATE	ZONE	AUTHORITY	BRIEF RECORD			<input type="checkbox"/> I/C	HEAD
SCALE:-1:1				A D R D E AGRA	DRN..	C.P.PAL	CAD	GROUP
DIMENSIONS IN mm				GROUP:- PAS	CHD.	NIROTI	PROJ.OFFR./GROUP OFFR.	
TOL:- IS:2102 Pt.1(Med.) 1993				SPRING WASHER D-10 'MAIN' PARACHUTE (LOCK,DOUBLE CONED)			APPROVED	
MATERIAL:-							PROJ.DIR./GROUP DIR.	
FINISH:-							DRG. No.	
HEAT TREATMENT:-							2.1.01-29-03	

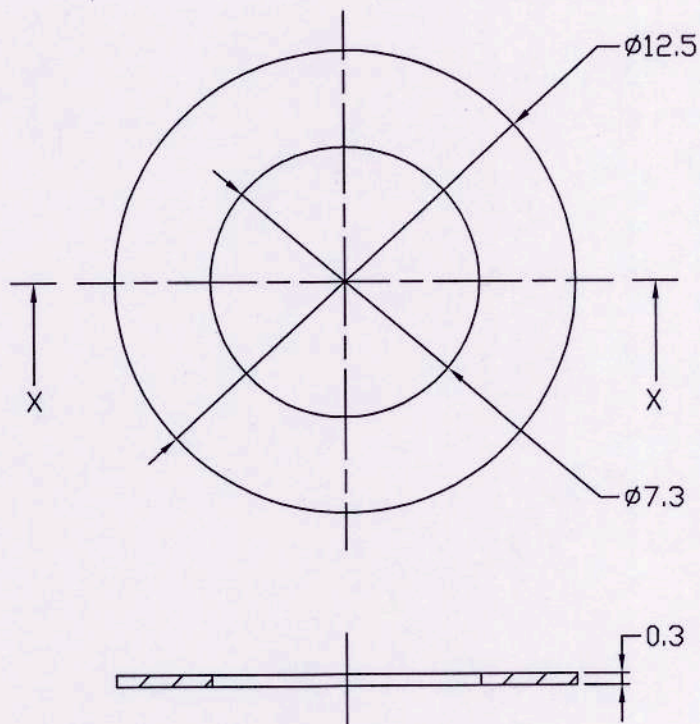
1

2

3

4

5

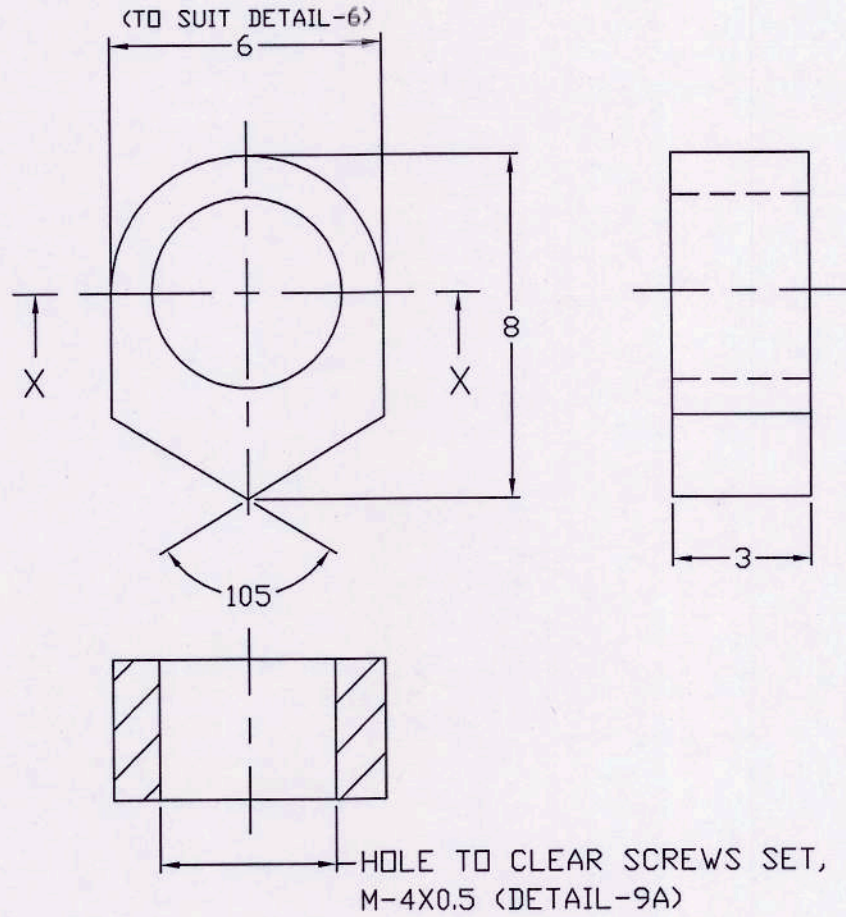


SECTION-XX

MATERIAL:- CARBON STEEL, HS-70 TO BS:1449,PT-34

Rev.No	DATE	ZONE	AUTHORITY	BRIEF RECORD			<input type="checkbox"/> I/C	GROUP
SCALE:- N.T.S				A D R D E AGRA	DRN.	C.P.PAL		
DIMENSIONS IN mm				GROUP:- PAS	CHD.	NIROTI		
TOL:- IS:2102 Pt. 1(Med.) 1993				<p>WASHER D-10 'MAIN' PARACHUTE (LOCK, DOUBLE CONED)</p>			PROJ.OFFR./GROUP OFFR. <i>[Signature]</i>	
MATERIAL:-							APPROVED	
FINISH:-							PROJ.DIR./GROUP DIR. <i>[Signature]</i>	
HEAT TREATMENT:-							DRG. No.	
				2.1.01-29-05				

6A

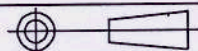


2-OFF
SECTION-XX

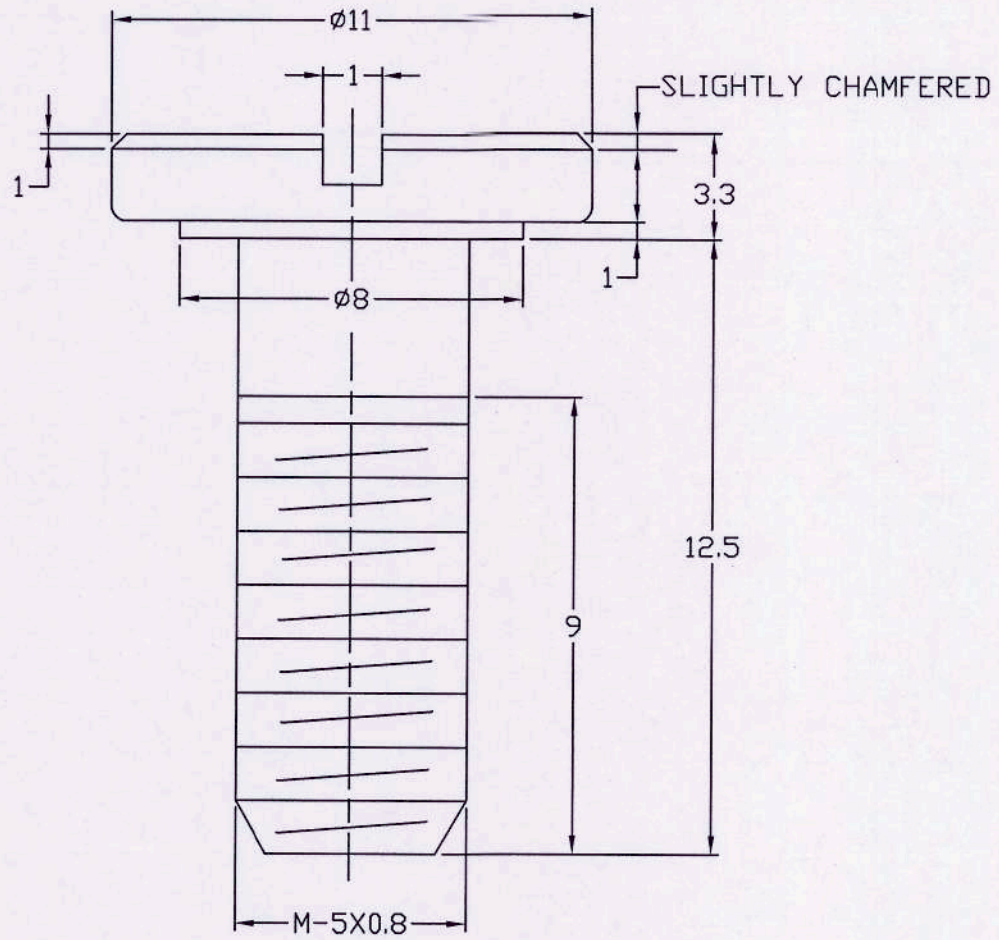
MATERIAL:- MILD STEEL TO BS:970,EN-3B

Rev.No	DATE	ZONE	AUTHORITY	BRIEF RECORD		<input type="checkbox"/> I/C	HEAD
						CAD	GROUP

SCALE:- N.TS.	A D R D E AGRA	DRN.,	C.P.PAL	 PROJ.OFFR./GROUP OFFR.
DIMENSIONS IN mm	GROUP:- PAS	CHD.	NIROTI	
TOL:- IS:2102 Pt.1(Med.) 1993	SHOCK ABSORBER D-10 'MAIN' PARACHUTE (LOCK, DOUBLE CONED)			APPROVED
MATERIAL:-				 PROJ.DIR./GROUP DIR.
FINISH:-				DRG. No.
HEAT TREATMENT:-				2.1.01-29-07



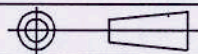
7



1-OFF

MATERIAL:- MILD STEEL TO BS:970,EN-3B.

Rev.No	DATE	ZONE	AUTHORITY	BRIEF RECORD			<input type="checkbox"/> I/C	HEAD
SCALE:-1:1	A D R D E AGRA			DRN..	C.P.PAL			
DIMENSIONS IN mm	GROUP:- PAS			CHD.	NIROTI			
TOL:- IS:2102 Pt.1(Med.) 1993	<p align="center">COVER SCREW D-10 'MAIN' PARACHUTE (LOCK, DOUBLE CONED)</p>			<p align="center">APPROVED</p> <p align="center"><i>[Signature]</i> PROJ.DFFR./GROUP DFFR.</p>				
MATERIAL:-				<p align="center">PROJ.DIR./GROUP DIR.</p>				
FINISH:-				<p align="center">DRG. No.</p>				
HEAT TREATMENT:-				<p align="center">2.1.01-29-08</p>				



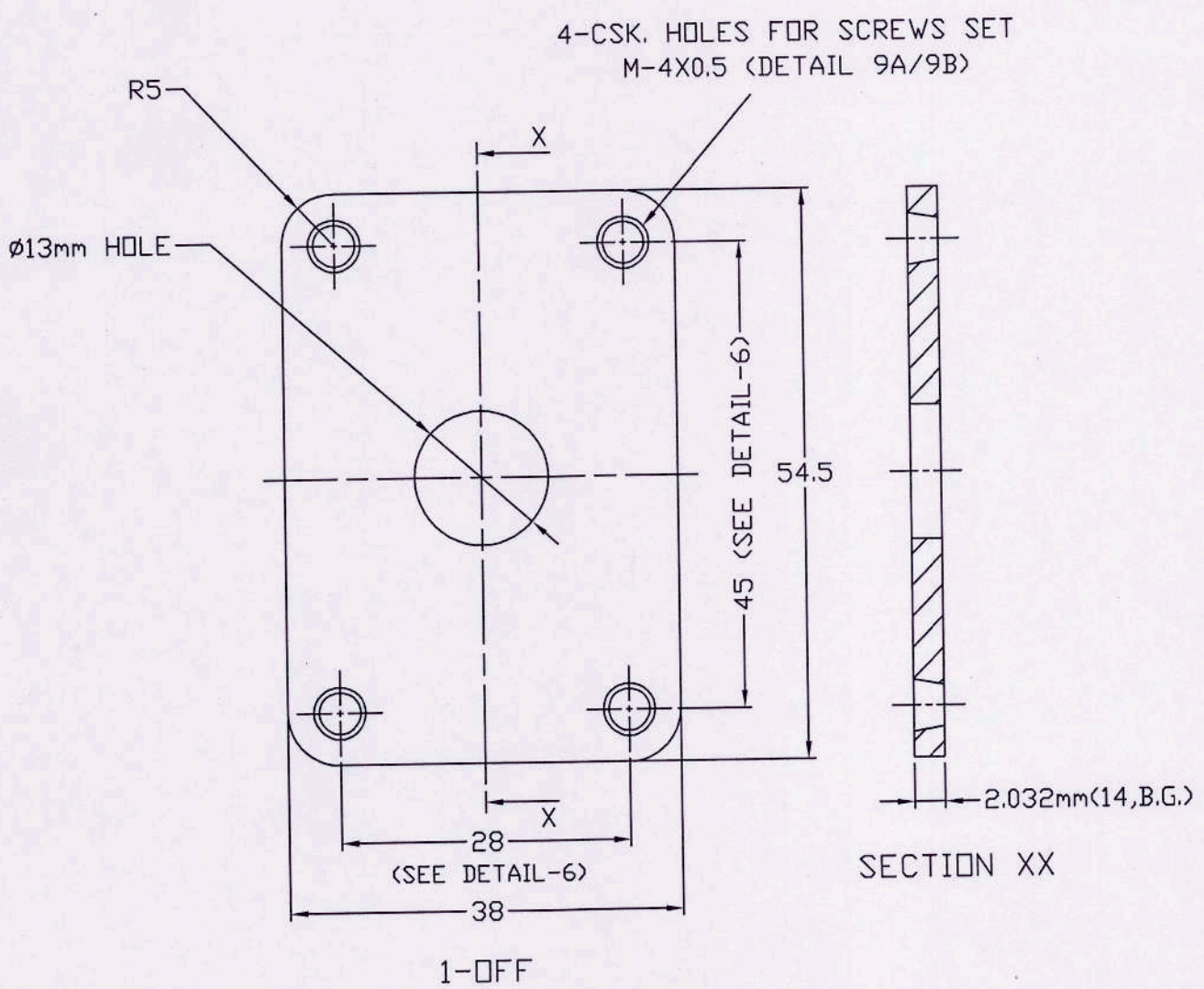
1

2

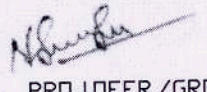
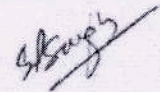
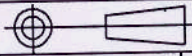
3

4

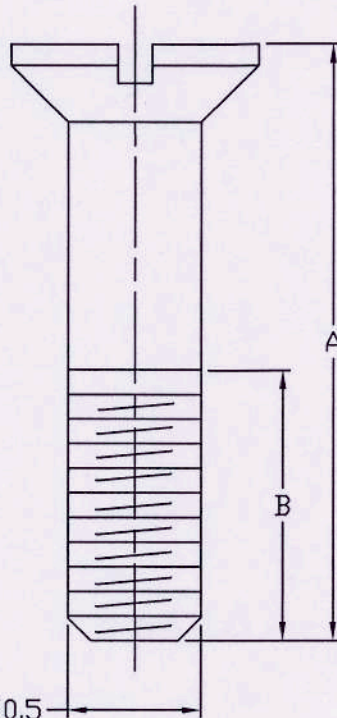
8



MATERIAL:- CARBON STEEL HS-22 TO BS:1449,PT-3A

Rev.No	DATE	ZONE	AUTHORITY	BRIEF RECORD			I/C	HEAD
							CAD	GROUP
SCALE:-1:1			A D R D E AGRA	DRN..	C.P.PAL			
DIMENSIONS IN mm			GROUP:- PAS	CHD.	NIROTI			
TOL.:- IS:2102 Pt.1(Med.) 1993			FASTING PLATE D-10 'MAIN' PARACHUTE (LOCK,DOUBLE CONED)			PROJ.OFFR./GROUP OFFR. APPROVED 		
MATERIAL:-						PROJ.DIR./GROUP DIR. 		
FINISH:-						DRG. No.		
HEAT TREATMENT:-						2.1.01-29-09		
								

9A
9B
9C

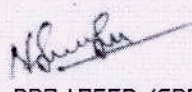
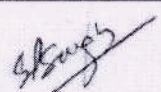
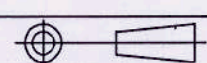


COUNTERSUNK HD M-4X0.5

DETAIL No.	A	B	No. OFF
9A	19	10	3
9B	16.5	7.5	1
9C	12	7.5	1

MATERIAL:-MILD STEEL TO B.S.970,EN-3B.

TABLE OF DIMENSIONS

Rev.No	DATE	ZONE	AUTHORITY	BRIEF RECORD			<input type="checkbox"/> I/C CAD	HEAD GROUP
SCALE:- N.T.S			A D R D E AGRA	DRN..	C.P.PAL	 PROJ.OFFR./GROUP OFFR.		
DIMENSIONS IN mm			GROUP:- PAS	CHD.	NIROTI			
TOL:- IS:2102 Pt.1(Med.) 1993			SCREW SET D-10 'MAIN' PARACHUTE (LOCK,DOUBLE CONED)			APPROVED		
MATERIAL:-						 PROJ.DIR./GROUP DIR.		
FINISH:-								
HEAT TREATMENT:-								
			DRG. No.			2.1.01-29-10		

1

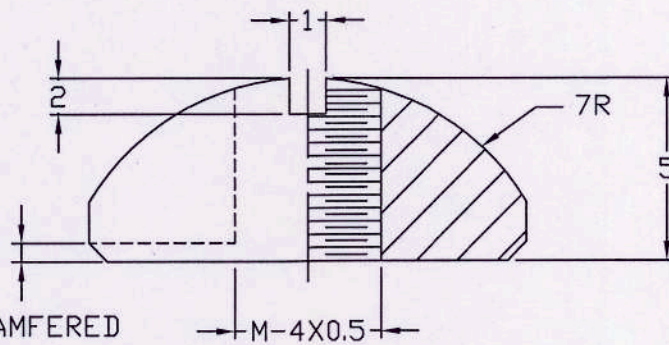
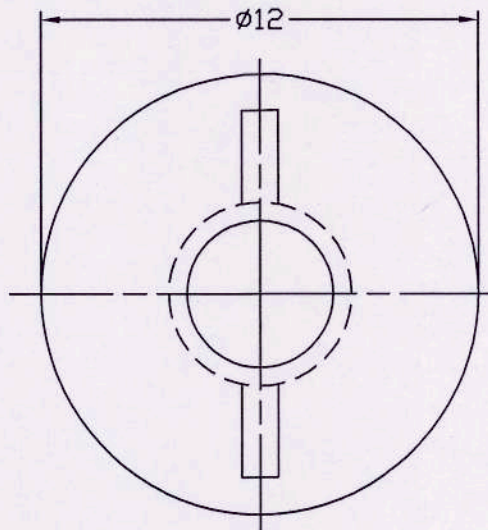
2

3

4

SHEET 12 OF 12

10



SLIGHTLY CHAMFERED

M-4X0.5

1-OFF

MATERIAL:-MILD STEEL TO BS: 970,EN-38

FINISH:-CADMIUM PLATED.

Rev.No

DATE

ZONE

AUTHORITY

BRIEF RECORD

I/C
CADHEAD
GROUP

SCALE:- N.T.S

DIMENSIONS IN mm

TOL:- IS:2102 Pt.1(Med.) 1993

MATERIAL:-

FINISH:-

HEAT TREATMENT:-

A D R D E AGRA

DRN..

C.P.PAL

GROUP:- PAS

CHD.

NIROTI

PROJ.OFFR./GROUP OFFR.

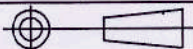
APPROVED

PROJ.DIR./GROUP DIR.

DRG. No.

2.1.01-29-11

NUT
D-10 'MAIN'
PARACHUTE
(LOCK,DOUBLE
CONED)



1

2

3

4