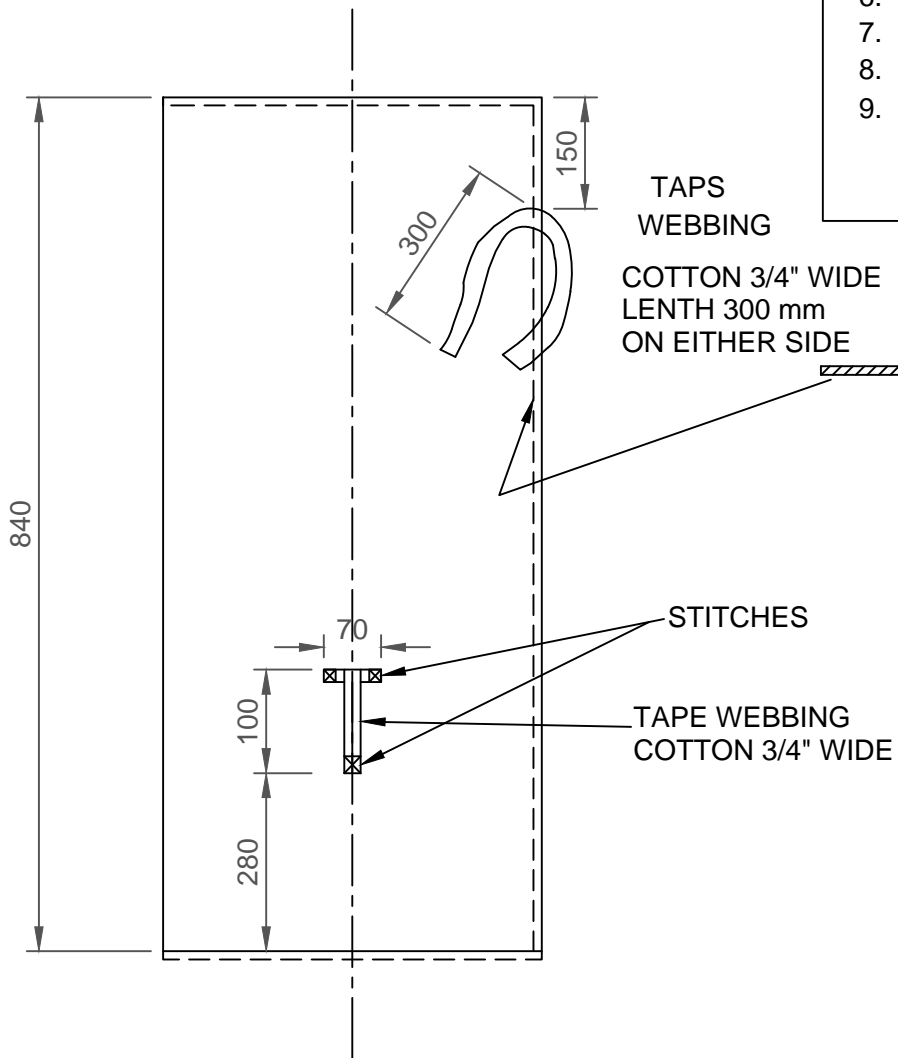


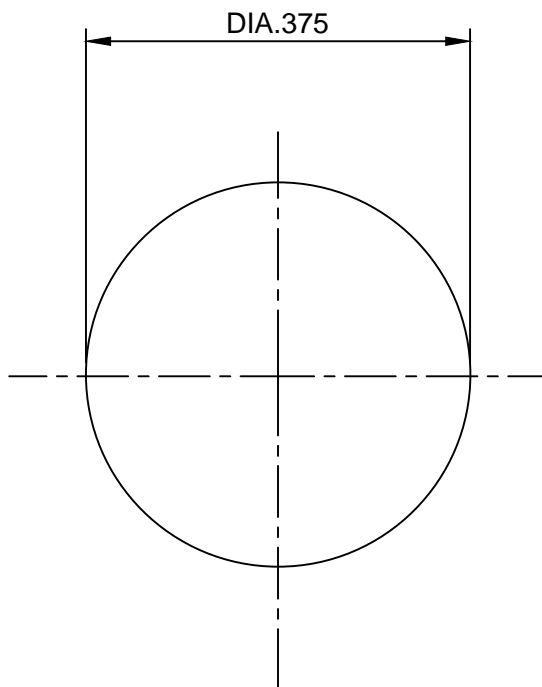
SPECIFICATION OF CLOTH DASOOTHI

1. WEIGHT PER SQUARE METER ABOUT 240 GMS.
2. THREAD PER CENTIMETER WARPXWEBT ----- 13 X 13
3. NO. OF PLYS PER THREAD ----- 2 X 2
4. APERTURE - - - - - ABOUT 0.21 MM
5. WEIGHT PER 100 METER THREAD ----- 8.5 GMS
6. ALKALINITY TO METHYL ORANGE ----- NIL
7. CHLORIDE AS NA CL ----- NIL
8. STARCH ----- NIL
9. SHRINKAGE (10 cm. SQUARE BIT
STEEPED AT 60 DEGREE CEL. FOR 4 HOURS) - - - - - MAX 5%
(WITHOUT STRETCHING)



STITCHING DETAIL

THREAD - 2/28 COTTON WHITE
15 STICHES PER 25 MM



DIMENSIONS ARE IN MM

1	12. 4 . 73	POCKET REMOVED EX TAPE WEBBING COTTON ADDED	D. M. / N C P
Sr No.	DATE	AMENDMENTS	REMARK,S

ORDNANCE FACTORY, BHANDARA

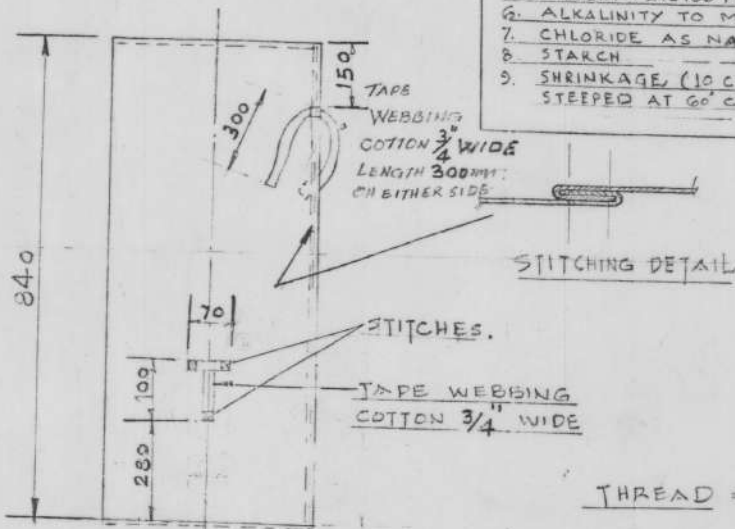
BAG DASOOTHI CLOTH

DATE :- 7 - 6 - 67	SCALE :- N T S
DRAWN BY :-	DRG NO :-
TRACED BY :-	OFBa' NCP' EXPN'16
CHECKED BY :-	

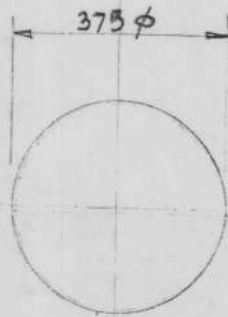
APPROVED BY :-	FINAL APPROVAL
ASST. MANAGER / CHEM	GENERAL MANAGER

SPECIFICATION OF CLOTH DASOOTHI

- | | |
|--|--------------------------------|
| 1. WEIGHT PER SQUARE METER | -- ABOUT 240 GMS |
| 2. THREAD PER CENTIMETER, WARP X WEBT | -- 13 X 13 |
| 3. NO. OF PLYS PER THREAD | -- 2 X 2 |
| 4. APERTURE | -- ABOUT 0.21 mm |
| 5. WEIGHT PER 100 METER THREAD | -- 8.5 GMS |
| 6. ALKALINITY TO METHYL ORANGE | -- NIL |
| 7. CHLORIDE AS NA CL | -- NIL |
| 8. STARCH | -- NIL |
| 9. SHRINKAGE (10 CM. SQUARE, BUT STEEPED AT 60° C FOR 4 HOURS) | -- MAX 5% (WITHOUT STRETCHING) |



THREAD = 2/28 COTTON WHITE
15 STICHES PER 25 MM.

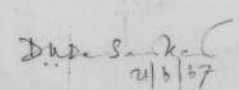



DIMENSIONS ARE IN M.M.

1	12-4-73	POCKET REMOVED & TAPE WEBBING COTTON ADDED.	Ammonia D.M/NCP
SL NO	DATE	AMMENDMENTS	REMARKS

ORDNANCE FACTORY BHANDARA

BAG DASOOTI CLOTH

DATE: 7-6-67	SCALE: NTS
DRN: -	DRG. NO. -
TRD: -	OFB D.M/NCP EXPN '16
CHKD: -	APPROVED BY
	 21/5/67 ASST. MANAGER/CHEM.
	FINAL APPROVAL  29/5/67 GENERAL MANAGER