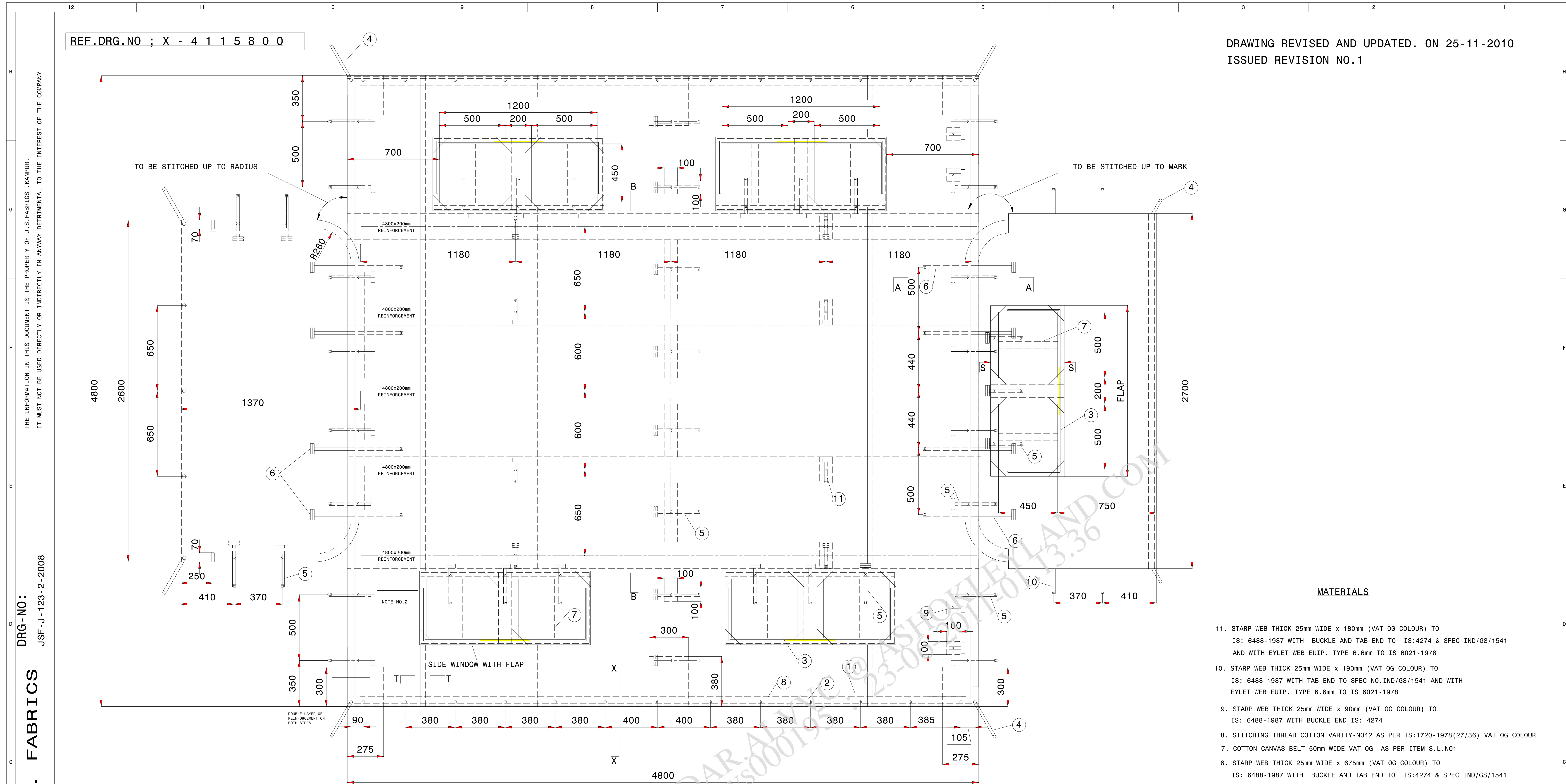


This design is strictly private and confidential. It is the exclusive property of Ashok Leyland Ltd. and must not be used, copied or reproduced in part or whole without the company's written permission.

ASHOK LEYLAND LTD. TECHNICAL CENTRE, VELLITTOVAL CHAVADI



DRAWING REVISED AND UPDATED. ON 25-11-2010
ISSUED REVISION NO.1

DRG-NO: JSF-J-123-2-2008

J.S. FABRICS

NOTES

- SHRINKAGE ALLOWANCE 2.5% IN WARP DIRECTION TO BE PROVIDED
- MANUFACTURE DETAILS MARKING, INSIDE VIEW IN BLACK COLOUR AS UNDER IN BLOCK SIZE 400 X 250MM AT REAR SIDE AS MARKED
A - DRG. / PART NO :
B - NAME & ADDRESS OF MFRS. :
C - MONTH & YEAR OF MFR:
D - S/O NO :
- STITCHING TO BE 4 TO 5 STITCHES PER 25mm
- ALL DIMENSION ARE IN 'MM' UNLESS OTHERWISE SPECIFIED.
- PILOT SAMPLE SHOULD BE GOT APPROVED BEFORE BULK PRODUCTION
- ALL RAINFORCEMENT, WINDOW FLAP, WINDOW CORNER PIECE, & CORNER & MIDDLE REINFORCEMENTS AS PER MATERIAL ITEM NO 1
- JOINTS OF THE PANELS WILL BE DEPENDS ON THE WIDTH OF THE CANVAS CLOTH & SHOULD BE FOLDED JOINT ONLY, STANDARD WIDTH 910MM±10MM FOR ITEM NO 1, & MFG BY JSF ONLY.

PACKING DETAILS

FIRST PACKED IN HDPE BAG AFTER THAT HESSION/GUNNY BAG

WEIGHT OF THE ASSY.CANVAS CANOPY

WEIGHT OF THE ASSY.CANVAS CANOPY WITHOUT PACKING NOT LESSTHEN 43 KG. (FORTY THREE) + 5% ASPER IS OF BASIC MATERIAL I S 1424 V.NO.2

MATERIALS

- STARP WEB THICK 25mm WIDE x 180mm (VAT OG COLOUR) TO IS: 6488-1987 WITH BUCKLE AND TAB END TO IS:4274 & SPEC IND/GS/1541 AND WITH EYLET WEB EUIP. TYPE 6.6mm TO IS 6021-1978
- STARP WEB THICK 25mm WIDE x 190mm (VAT OG COLOUR) TO IS: 6488-1987 WITH TAB END TO SPEC NO.IND/GS/1541 AND WITH EYLET WEB EUIP. TYPE 6.6mm TO IS 6021-1978
- STARP WEB THICK 25mm WIDE x 90mm (VAT OG COLOUR) TO IS: 6488-1987 WITH BUCKLE END IS: 4274
- STITCHING THREAD COTTON VARIETY-NO42 AS PER IS:1720-1978(27/36) VAT OG COLOUR
- COTTON CANVAS BELT 50mm WIDE VAT OG AS PER ITEM S.L.NO1
- STARP WEB THICK 25mm WIDE x 675mm (VAT OG COLOUR) TO IS: 6488-1987 WITH BUCKLE AND TAB END TO IS:4274 & SPEC IND/GS/1541 AND WITH EYLET WEB EUIP. TYPE 6.6mm TO IS 6021-1978
- STARP WEB THICK 25mm WIDE x 320mm (VAT OG COLOUR) TO IS: 6488-1987 WITH BUCKLE AND TAB END TO IS:4274 & IND/GS/1541 AND WITH EYLET WEB EUIP. TYPE 6.6mm TO IS 6021-1978
- A) ROPE POLYPROPYLENE 8mmDIA 3 STRAND HAWSER LAID OG (ORDINARY GRADE) TO IS:5175-1982
B) DETAILS OF ROPE-4800,4800mm INSIDE HEM IN MAIN PAL 12400,12400mm OUTSIDE OF MAIN PAL, 2600 INSIDE HEM OF REAR CURTAIN,4500mm OUTSIDE OF REAR CURTAIN AND 4500mm IN FRONT CURTAIN
- HOOK & LOOP TAPE 50MM WIDE COLOUR OG/BLACK IS 8156-1981 TYPEII
- EYELET BRASS IS:4084-1978 SIZE NO28 FOR PP ROPE
- CANVAS COTTON'OG SPECIAL WP" AS PER IS 1424 VARIETY NO.2 & IS : 6803-1972 VAT DYE ONLY, MFG. BY JSF ONLY.

J.S. FABRICS		68/12 BHOOSATOLI, KANPUR, PIN CODE-208001.	
DEVELOPED	JSF	28.04.2008	TITLE : ASSY. CANVAS CANOPY
CHECKED	S.K.AGARWAL		STALLION 4 X 4 MARK- IV
APPROVED			PART NO. F5J00800 #1
FILE NAME	SCALE	DRG. NO. JSF-J-123-3-2008	SHT. NO. 1 OF 2
	NTS		REV. NO. 1
CAUTION: THE INFORMATION IN THIS DOCUMENT IS THE PROPERTY OF J.S.FABRICS ,KANPUR. IT MUST NOT BE USED DIRECTLY OR INDIRECTLY IN ANYWAY DETRIMENTAL TO THE INTEREST OF THE COMPANY			

JSF-J-123-3-2008 F5J00800	Qty : -	Qty : -	
Supplier Part No AL Part No	Sample	Pilot	Production

Q-CRITICAL Q-SAFETY Q-IMPORTANT. THIS DRG.CONTAINS SAFETY CHARACTERISTICS UNLESS OTHERWISE SPECIFIED	SPECIAL INSTRUCTIONS/NOTE:
TOLERANCES REFER IS:2102 ; MEDIUM FOR MACHINING AND COARSE FOR FABRICATION	
SURFACE PROTECTION FABRICATED COMPONENTS TO BE DEGREASED, DESCALED, APPLY ZINC PHOSPHATE, APPLY EPOXY PRIMER AND APPLY ENAMEL TO MEET 300 HRS OF SALT SPRAY LIFE WHEN TESTED AS PER ASTM B117 (UNDER PELLICULAR CORROSION -- 20hr. NO BLISTERING IS ALLOWED.) MACHINED SURFACE TO BE APPLIED WITH RUST PREVENTIVE OIL TO IS:1154	
SURFACE FINISH AS PER IS:3073 (CLA VALUE)	METRIC SCREW THREADS SHALL CONFORM TO THE LIMITS AND TOLERANCES SPECIFIED IN THE CURRENT IS:4216 DIMENSIONS ARE IN MM DO NOT SCALE DRAWING

SL.No.	PART NO.	DESCRIPTION	MATERIAL	QTY.
BILL OF MATERIALS				
APPEARANCE ITEM		ER-DIN	DATE	
YES	NO	ER-DIN-XXXXXXX	XX.XX.XXXX	
FINISHED WEIGHT (APPROX)		REF.PT.NO.		
XXX.XXX Kgs		S/A.PT.NO.		
SCALE		SUPERSEDES		
NTS		SPEC.NO.		

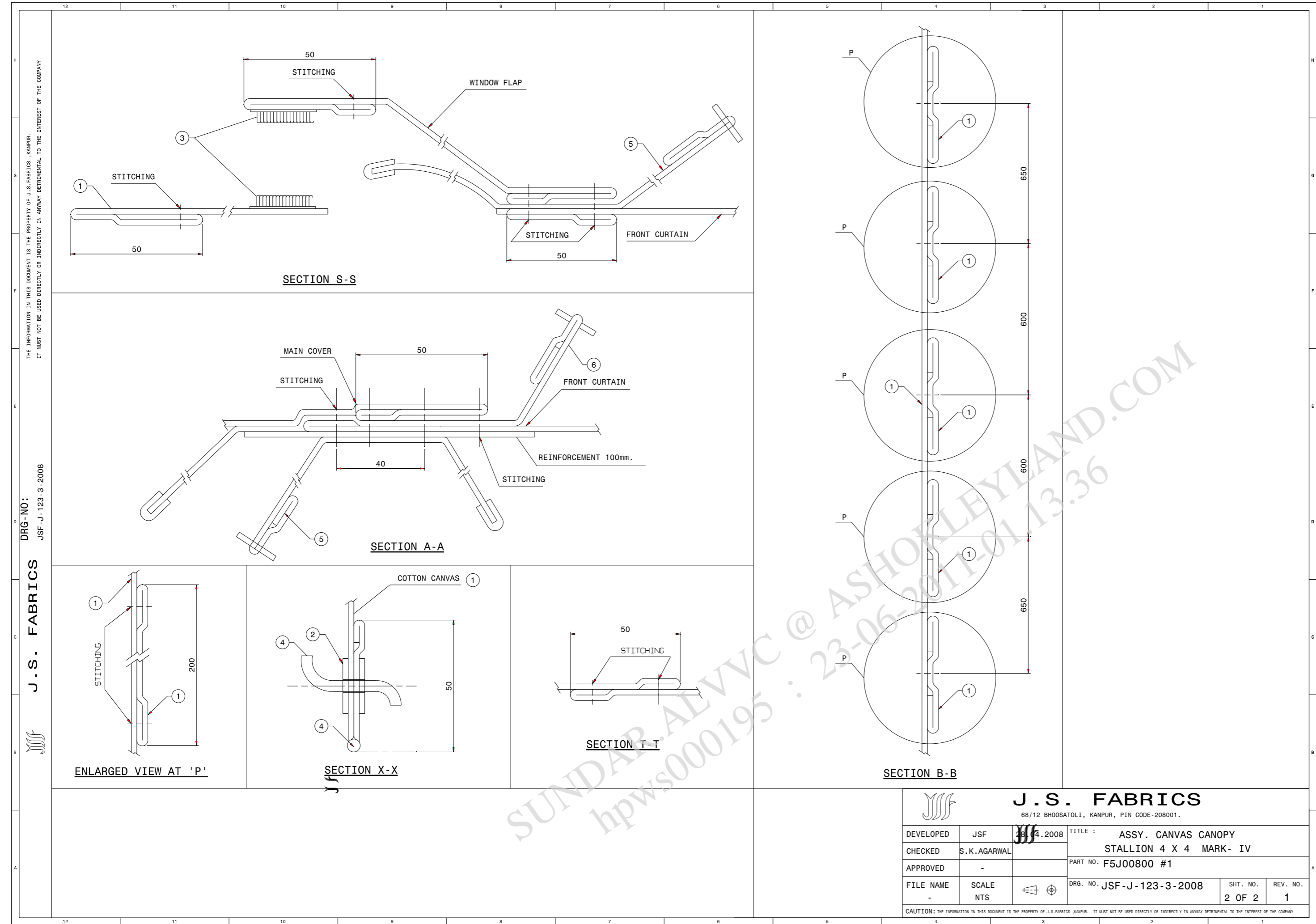
REVISION : R1	DATE : 11/12/2010	STATUS : RELEASE
STAGE : III	ER-DIN NO : ER-DIN-0006263	DATE : 11/12/2010
ALTERED BY : sundar.alv	CHECKED BY : jra.alv	
MED APPROVAL : N/A	APPROVED BY : sngarajan.alv	

DRWN/ DATE	CHECKED/ DATE	MED APPROVAL/ DATE	APPROVED/ DATE	STDS APP/ DATE
KV 1.11.10	BSV 1.11.10		SN 1.11.10	

REMARKS				
STALLION 4X4 MK-IV				
DESCRIPTION				
ASSY.CANVAS CANOPY				
PART NO.	F5J00800			#.1
SHEET NO	1	OF	2	AO



This drawing is strictly private and confidential. It is the exclusive property of ASHOK LEYLAND Ltd., and must not be used, copied or reproduced in part or whole without the company's written permission.



J.S. FABRICS 68/12 BHOOSATOLI, KANPUR, PIN CODE-208001.			
DEVELOPED	JSF 11/12/2008	TITLE :	ASSY. CANVAS CANOPY
CHECKED	S.K.AGARWAL		STALLION 4 X 4 MARK- IV
APPROVED	-	PART NO.	F5J00800 #1
FILE NAME	SCALE	DRG. NO.	SHT. NO.
-	NTS	JSF-J-123-3-2008	2 OF 2
			REV. NO. 1
CAUTION: THE INFORMATION ON THIS DOCUMENT IS THE PROPERTY OF J.S.FABRICS, KANPUR. IT MUST NOT BE USED DIRECTLY OR INDIRECTLY IN ANYWAY DETRIMENTAL TO THE INTEREST OF THE COMPANY			

ALTERATIONS	ER-DIN DATE	GRADE	SUFFIX

AL PLM VAULT
 REVISION : #1 DATE : 11/12/2010 STATUS : RELEASE
 STAGE : III ER-DIN NO : ER-DIN-0006263 DATE : 11/12/2010
 ALTERED BY : sundar.alvvc CHECKED BY : jnr.alvvc
 MED APPROVAL : N/A APPROVED BY : snagarajan.alvvc

DIGITALLY SIGNED . PHYSICAL SIGNATURE NOT REQUIRED				
DRAWN/ DATE	CHECKED/ DATE	MED APPROVAL/ DATE	APPROVED/ DATE	STDS APP/ DATE
KV 1.11.10	BSV 1.11.10	---	SN 24.11.2010	---

JSF-J-123-3-2008	F5J00800	Qty : -	Qty : -	-
Supplier Part No	AL Part No	Sample	Pilot	<input checked="" type="checkbox"/> Production

-CRITICAL
 -SAFETY
 -IMPORTANT. THIS DRAWING CONTAINS SAFETY CHARACTERISTICS

UNLESS OTHERWISE SPECIFIED		
TOLERANCES	REFER IS:2102; MEDIUM FOR MACHINING AND COARSE FOR FABRICATION	
SURFACE PROTECTION	FABRICATED COMPONENTS TO BE DEGREASED, DESCALED. APPLY ZINC PHOSPHATE, APPLY EPOXY PRIMER AND APPLY BLACK ENAMEL TO MEET 300 HRS OF SALT SPRAY LIFE WHEN TESTED AS PER ASTM B117 (UNDER PELLICULAR CORROSION <= 2mm. NO BLISTERING IS ALLOWED.) MACHINED SURFACE TO BE APPLIED WITH RUST PREVENTIVE OIL TO IS:1154	
SURFACE FINISH AS PER IS:3073(CLA VALUE)	METRIC SCREW THREADS SHALL CONFORM TO THE LIMITS AND TOLERANCES SPECIFIED IN THE CURRENT IS:4218 CLASS 6g EXTERNAL OR 5H INTERNAL	SHARP EDGES TO BE REMOVED DIMENSIONS ARE IN MM DO NOT SCALE DRAWING

SPECIAL INSTRUCTIONS/NOTE:

SL No	PART NO:	DESCRIPTION	SIZE	MATERIAL	QTY

BILL OF MATERIALS			
APPEARANCE ITEM	ER-DIN	DATE	
<input checked="" type="checkbox"/> YES <input type="checkbox"/> NO	ER-DIN _____	XX/XX/XX	
FINISHED WEIGHT (APPROX)	REF PART NO:	---	
XXX.XXX Kgs	S/A PART NO:	---	
SCALE	SUPERSEDES	---	
NTS	SPEC NO:	---	

REMARKS	STALLION 4X4 MK-IV
DESCRIPTION	ASSY.CANVAS CANOPY
PART NO.	F 5 J 0 0 8 0 0 #.1
SHEET No2..... OF2.....
	A2