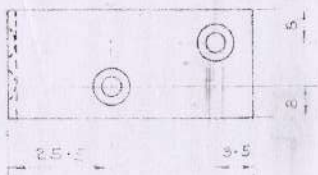
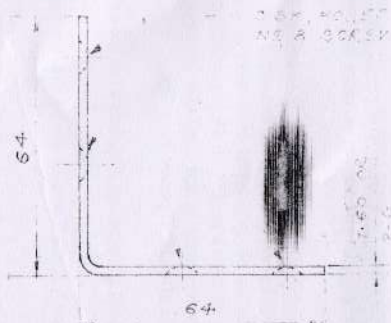
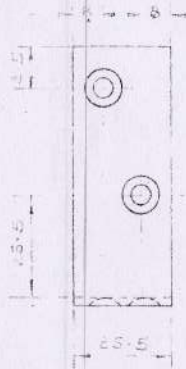


9 ASI

DRG CONVENTIONS CONFORM TO IS: SPECIFICATIONS
DIMENSIONS ARE IN MM

A: 75272-A



1.5X, 40, 57 TO 60T
NR 8 30K, 5V 8

NOTE :-

ALL DIMENSIONS UNLESS OTHERWISE SPECIFIED TO BE FIRST PREFERRED BY ANY APPLICABLE PROCESS

MATERIAL :-

~~STEEL PLATE TO ANY ONE OF THE FOLLOWING SPECIFICATIONS:~~
~~1) IS: 513 (LATEST ISSUE) COLD ROLLED & ANNEALED TYPE D BEST SURFACE~~
~~2) IS: 1445 PT 1 (LATEST ISSUE) COLD ROLLED & ANNEALED~~
 SPEC IS: 513 1986 (THIRD REVISION) (AMENDMENT THREE, REAFFIRMED IN 1992) COLD ROLLED & ANNEALED TYPE D BEST SURFACE

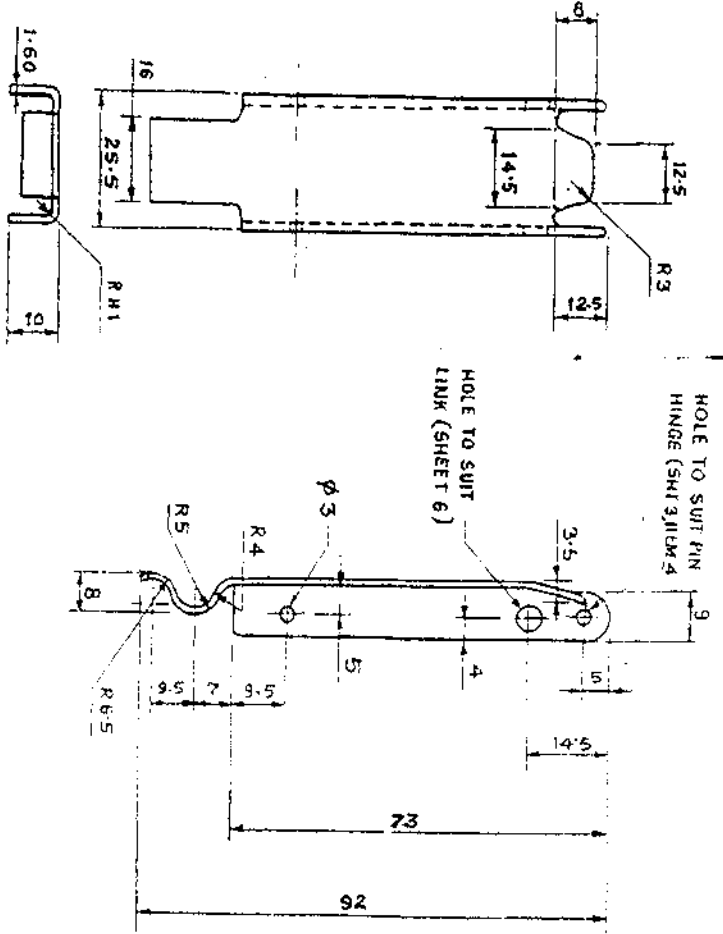
TECHNICAL REQUIREMENTS - SPEC. IA. 948 (a d)

29-11-14	DC 35275-A	SPRCS DRAWING	
24-7-95	DC 35657-A	ASSEMBLY DRG. NZS ADDED	
6-3-03	DC 35448-A	245 FORMAT BOX ENTRIES ADDED. IS: SPECIFICATIONS AND IS: 1436 MATERIAL SPECIFICATIONS UPDATED.	
5-8-02		REPLACED WITHOUT CHANGE	
		PREVIOUS DATES: 24670-A, 24728-A, 24974-A, 24751-A, 23888-A & 24661-A	
ENG OR L AUTHORITY	REVISION	DATE	APPROVED
DRG. CONTROL - 13-5-03			

PN	CHD	TCD RGT	COLP/IN
		SCALE - 1:1	
		EST. IN CHG - 26-84	
		Gauge 50/100 NOT APPLICABLE	
	DRG. CONTROL DATE -		
	MATL - AS ABOVE		
	PROTECTIVE FINISH - AS ABOVE		

ISSY. DRG. ISV 484A
SY 483A, ISV 538A
DESIGNER'S REF: IA.733
PART NO: 15V 8
DWG. CAT. NO.: NOT APPLICABLE

PLATE ANGLE 64X64



MATERIAL :-
 IS 513 : LATEST ISSUE COLD ROLLED AND ANNEALED BEST SURFACE TYPE 'D'

NOTE :-
 TOLERANCE ON UNTOLERANGED DIMENSION ± 0.5
 TECH. REQUIREMENT :- AS PER SPEC. NO. IA.1169 (b)

31-8-18	DC 37501-A	MATL NOTE AMENDED & MASTER COPY REPLACED
13-7-04	DC 36970-A	REF. D.C.
9-4-03	DC 35750-A	SCANNED WITHOUT CHANGE
14-7-04	DC 35750-A	MATL SPEC. UPDATED
24-1-01	DC 35672-A	ESTIMATED MASS ADDED
17-11-93	DC 35622-A	REVISION REQUIRED. NOTE ADDED
10-8-92		REPLACED WITHOUT CHANGE
		REVISED D.C. NO. 19879-A, 26870-A, 28156-A, 28474-A, 29750-A, 29884-A, 34681-A
DRG. SEAL D.D. 19-5-47		

CATCH PIECE

DRN.:-	CHD.:-	TCD.:-	ADG. COMP
COM MAN	O/I/C/D/O	SCALE:-	1:1
FOR CQA (A)	EST MASS:-	GAUGE SCHD.:-	30 S
		DATE:-	
MATERIAL:-	AS ABOVE		
PROTECTIVE FINISH:-	REFER TO DRG. NO. ISV 479A		

ASSY DRG.	ISV 1A
DESIGNER'S REF.	IA 793
PART NO.	ISV 1
SHEET 4	
D.S. CAT NG	NOT APPLICABLE
AUSP. (Q/A/A) KIRKKEE	

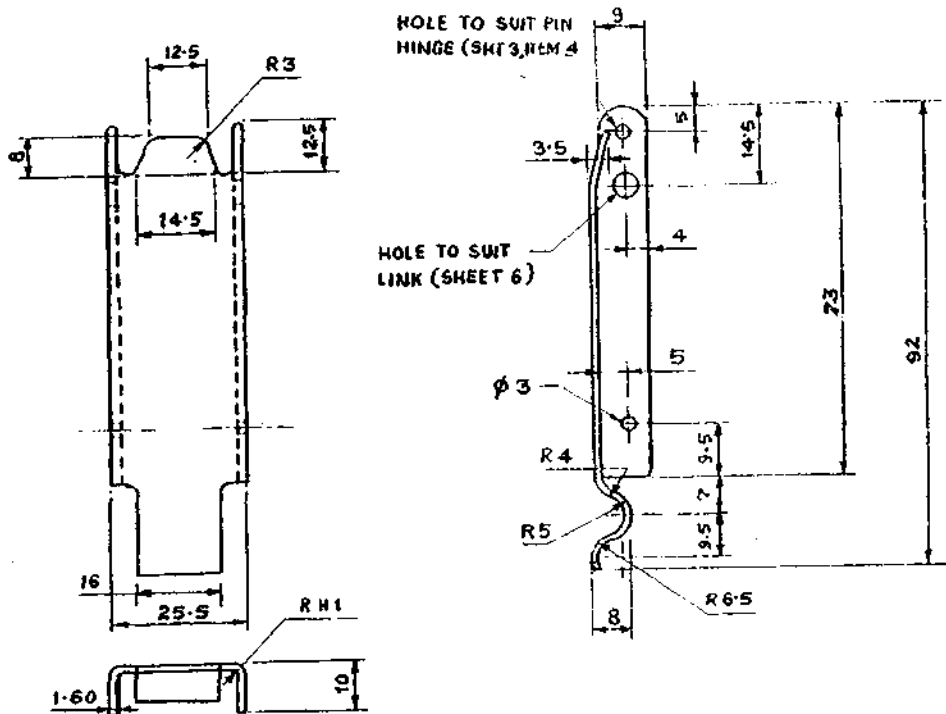
ISV

PART NO

DRG. CONVENTIONS CONFORM TO IS: SPECIFICATIONS.
DIMENSION ARE IN MM.

TO BE RUSTPROOFED BY ANY APPROVED PROCESS.

D.C.I. 19879-A



MATERIAL :-

IS 513 : LATEST ISSUE COLD ROLLED AND ANNEALED BEST SURFACE TYPE 'D'

NOTE :-

TOLERANCE ON UNTOLERANCED DIMENSION ± 0.5
TECH. REQUIREMENT :- AS PER SPEC. NO. IA 1169 (p)

DATE	AUTHORITY	REVISION	ZONE	AHSP SIGN	D.O.
31.8.18	DC. 37501-A	MATL NOTE AMENDED & MASTER COPY REPLACED			
13.7.04	DC. 36970-A	REP. D.C.			
9.4.03		SCANNED WITHOUT CHANGE			
14.7.04	DC 35750-A	MATL SPEC UPDATED			
24.3.04	DC 35672-A	ESTIMATED MASS ADDED			
17.11.03	DC 35622-A	DRG FORMAT BOX ENTRIES, TECH REQUIREMENT NOTE ADDED, MATL NOTE AMENDED & IS SPEC WAS IS 513			
10.6.92		RETRACED WITHOUT CHANGE			
		PREVIOUS D.C. NO. 19879-A, 26670-A, 29158-A, 29474-A, 29750-A, 29886-A, 34661-A			

DRN:-	CHD:-	TCD:-ADG	COMP
CD MAN	O I/C D O	SCALE:- 1:1	EST MASS:- 30g
APPD		GAUGE SCHD:- NOT APPLICABLE	DATE:-
MATERIAL :- AS ABOVE			
PROTECTIVE FINISH :- REFER TO DRG. NO. ISV 479A			

ASSY DRG.	ISV 1A
DESIGNER'S REF.	I.A. 793 SHEET 4
PART NO	ISV 1
D.S. CAT NO	NOT APPLICABLE
AHSP:-	C Q A(A) KIRKEE

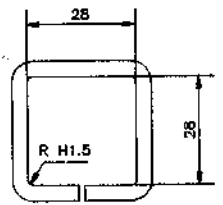
DRG SEALED:- 19-5-47

CATCH PIECE

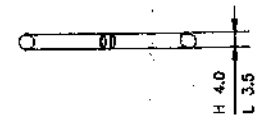
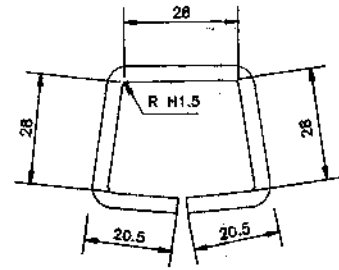
8 7 6 5 4 3 2 1

DRG. CONVENTIONS CONFORM TO IS: SPECIFICATIONS
DIMS ARE IN mm.

DC.19879-A



3 PART No. ISV 3



3A ALTERNATIVE PART No. ISV 4

NOTE:-
TOL ON UNTOL. DIMS. ± 0.5
TO BE RUSTPROOFED BY ANY APPROVED PROCESS.

MATERIAL:-
STEEL WIRE IN CONFORMITY WITH THE RELEVANT CLAUSE
IN SPEC. FOR WOODEN BOXES I.A. 948 (a,d)

TECHNICAL REQUIREMENT:-
AS PER SPEC No. I.A.1169(n).

3-7-64 DC-36653-A		REF. D.C.				DRN:-		CHD:-		TRD:- M.G.S		DDMP:- U.A.R.		ASSY. DRG. NOT APPLICABLE	
3/2000		D.C. 36653-A		REDRAWN WITHOUT CHANGE & NEW MASTER COPY REPLACED IN SUPERSESSION OF EXISTING DILAPIDATED COPY.		C.D'MAN		O I/C D.O		SCALE:- 1:1		EST.MASS:- 3 g. (Approx.)		GAUGE SCHD:- NOT APPLICABLE	
				PREVIOUS DC.No. 19879-A, 28870-A, 28128-A, 28474-A, 28750-A, 28826-A, 35622-A & 35672-A		APPD		FOR CQA(A)		DATE:-		DESIGNER'S REF		SHT. 6 DET.No.	
R. NO.		DATE		AUTHORITY		REVISION		ZONE		AHSP		D.O.		MATL:- AS ABOVE	
DRG. SEALED:-		19-5-47.												PROTECTIVE FINISH:- AS PER DRG. ISV. 479 A	
														PART No. AS ABOVE.	
														D.S.CAT NO NOT APPLICABLE	
														AHSP:- CQA(A) KIRKEE	

LINK

