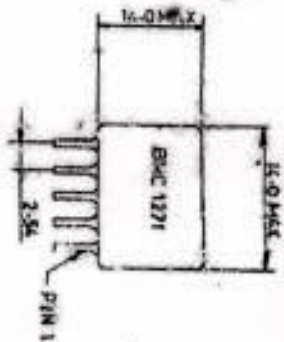
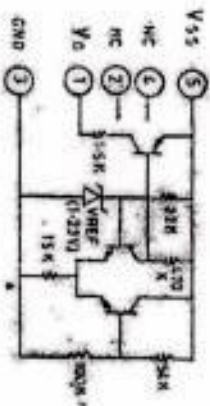


DIMENSIONAL LAYOUT

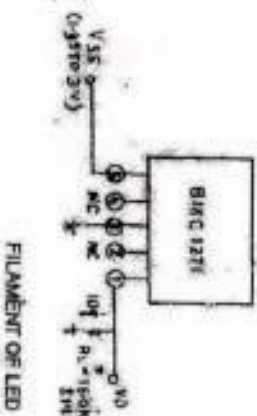


CIRCUIT SCHEMATIC



NC: NOT CONNECTED

TEST CIRCUIT



GENERAL - BMC 1271 COMPRISES OF THE SENSE CIRCUIT FOR LOW BATTERY INDICATION USED IN NIGHT VISION INSTRUMENTS. IT OPERATES FROM A NOMINAL VOLTAGE OF 3V AND LIGHTS UP AN LED WHEN THE VOLTAGE DROPS TO 2.05 V.

ABSOLUTE MAXIMUM RATINGS=

SUPPLY VOLTAGE VSS = +5 V

STORAGE TEMPERATURE = -40° C TO +100° C

OPERATING TEMPERATURE = -20° C TO +55° C

ELECTRICAL CHARACTERISTICS (Ia = 25° C)

PARAMETER	LIMITS			UNIT	TEST CONDITION
	MIN.	TYP.	MAX.		
SUPPLY CURRENT, I <sub>SS</sub>	-	0.20	0.25	mA	V <sub>SS</sub> = +3.0 V
INDICATION VOLTAGE:					
1. V <sub>SS</sub> FOR OUTPUT, LOW, V <sub>SS</sub> (L)	2.15	-	-	V	I <sub>o</sub> = 200 μA
2. V <sub>SS</sub> FOR OUTPUT, HIGH, V <sub>SS</sub> (H)	-	2.05	1.95	V	I <sub>o</sub> = 300 μA

*FOR LAYOUT 13.9.2.17*  
*Date of Issue: 13.9.2.17*

ORDNANCE  
FACTORY  
DEHRADUN

DR *gsk*  
TR  
CH.

APPD.

*gsk*  
*W.S.*  
*W.M.*

SIGHT NIGHT VISION PASSIVE,  
84mm CARL GUSTAV GUN, 101 A

HYBRID MICRO CIRCUIT BMC-1271

REF. DRG. No. IRDE-1295 SHT-1

DR 24-2-97 SCALE -

MATL. TREAT

SMTS. 1 SMT N: 1

AMENDMENTS

DA. 19/2015 DT. 27/02/2015. OFD/00/102 DRG No MCT-1512/1

REF. Pol/scs/rms/ss DT. 20-2-97