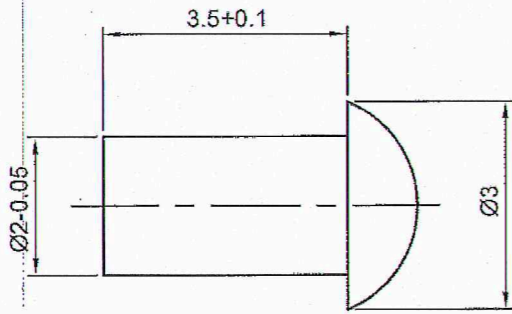


DIMENSIONS ARE IN mm.
 UNTOLERATED DIMNS. AS PER IS : 2102 (MED)
 SHARP CORNERS SHOULD BE BLUNT TO R 0.5

UN CONTROLLED COPY
 CERTIFIED CORRECT COPY OF APPROVED
 DRAWINGS AT THIS DATE. 25/10/24
 DESIGN & DRAWING OFFICE,
 ORDNANCE FACTORY, TIRUCHIRAPPALLI-620 016.



NOTE:



REMOVE ALL SHARP EDGES AND BURRS
 DIMENSIONS ARE TO BE READ AS APPLYING AFTER PROTECTIVE FINISH

MATERIAL:

STEEL TO BS:970 PT-1,1983 GD.070 M55 "T" CONDITION OR (EN-9) OR
 STEEL TO BS:970 PT-1,1983 GD.080 M40 "T" CONDITION OR (EN-8)

PROTECTIVE FINISH:

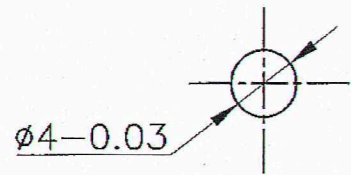
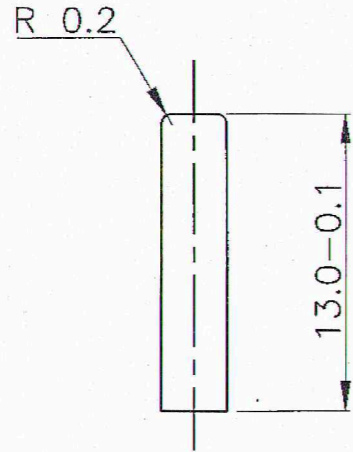
PHOSPHATED TO SPECN.JSS-0465-01-1994,CLASS-II,OIL FINISH

| PART NO. | DESCRIPTION | NO OFF | MATERIAL | TREATMENT | REMARKS |
|------------|---|-------------------------|---|-----------|--|
| |  SIGNATURE & DATE DRAWN CHECKED <i>P. J. [Signature]</i> HOS/DDO <i>P. J. [Signature]</i> NODAL OFFICER/ FOR MGL. OFFICER/ D&DO | | | | SUB: BACK SIGHT SUPPORTING PLATE RIVET FOR: SIGHT ASSY OF: TAR UBGL DES. REF. NO. DRG. NO. 36P 1319 SCALE: N.T.S. STORE NO. OPERATION NO. |
| AMENDMENTS | SIGN. & DATE | APPROVED ON: 05.10.2018 |  ORDNANCE FACTORY TIRUCHIRAPPALLI | | SHEETS: 1 SHEET NO: 1 |

23

DIMENSIONS ARE IN mm.
UNTOLERATED DIMNS. AS PER IS : 2102 (MED)

PROVISIONAL



UN CONTROLLED COPY
CERTIFIED CORRECT COPY OF APPROVED
DRAWINGS AT THIS DATE 23/01/24
DESIGN & DRAWING OFFICE,
ORDNANCE FACTORY, TIRUCHIRAPPALI-620 016.

NOTE:

DIMENSIONS ARE TO BE READ AS APPLYING AFTER PROTECTIVE FINISH

MATERIAL:

STEEL TO BS:970 PT-1,1983 GD.070 M55 OR EN-9

STEEL TO BS:970 PT-1,1983 GD.080 M40 OR EN-8

PROTECTIVE FINISH:

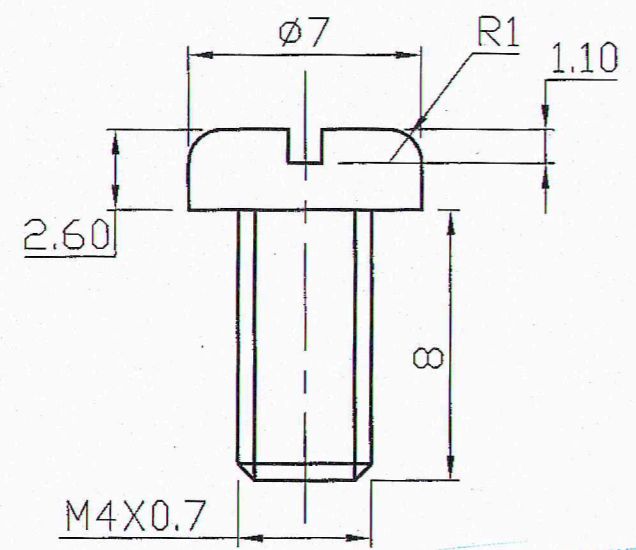
PHOSPHATED TO SPECN.JSS-0465-01-1994,CLASS-II,OIL FINISH

HARDNESS:- 300-350 HV

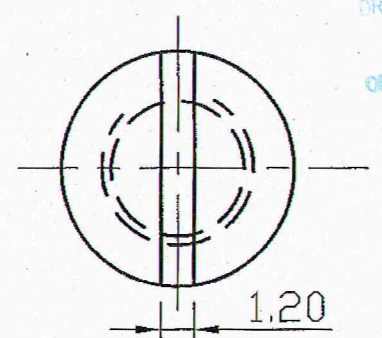
| PART NO. | DESCRIPTIONS | NO OFF | MATERIAL | TREATMENT | REMARKS |
|--|-------------------------|--|----------|-----------|---------------------------|
| TRACED DRAWN CHECKED OIC/D&DO OFFICER/PRODN. OFFICER/D&DO | SIGNATURE & DATE. | SUB: SIGHT WASHER LIMITER | | | SCALE |
| | | FOR: BODY ASSY. | | | NTS |
| | | OF : TAR UBGL | | | STORE DRG.NO. |
| | | DES.REF.NO. | | | OPERATION NO. |
| | | DRG. No.: 36P 1042 | | | |
| AMENDMENTS | SIG. & DATE | ORDNANCE FACTORY TIRUCHIRAPPALI-16. | | | SHEETS: 1 SHEET No.: 1 |
| | APPROVED ON. 31.07.2018 | | | | |

24

DIMENSIONS ARE IN mm.
UNTOLERATED DIMNS. AS PER IS : 2102 (MED)



UN CONTROLLED COPY
 CERTIFIED CORRECT COPY OF APPROVED
 DRAWINGS AT THIS DATE 22/07/14
 DESIGN & DRAWING OFFICE,
 ORDNANCE FACTORY, TIRUCHIRAPPALI - 620 016.



QTY: 2 NOS./GUN
 IS:1366-2002
 QTY: 2 NOS./GUN
 PROTECTIVE FINISH:
 PHOSPHATED TO SPECN.JSS:0465-01-1988 CLASS II (OIL FINISH)

| PART NO. | DESCRIPTIONS | NO OFF | MATERIAL | TREATMENT | REMARKS |
|------------|--------------------------|--|----------|-----------|---------------|
| | SIGNATURE & DATE. | SUB: STOP SCREW SIGHT M4X10 | | | SCALE NTS |
| | TRACED | FOR: SIGHT ASSY | | | STORE DRG.NO. |
| | DRAWN <i>Atok</i> | OF: TAR UBGL | | | |
| | CHECKED <i>Dejw</i> | DES.REF.NO. | | | OPERATION NO. |
| | OIC/D&DO <i>P. T. G.</i> | DRG. No.: 36P 1043 | | | |
| | OFFICER/PRODN. | ORDNANCE FACTORY TIRUCHIRAPPALI-16. | | | SHEETS: 01 |
| | OFFICER/D&DO | | | | SHEET No.: 01 |
| AMENDMENTS | SIG. & DATE | APPROVED ON. | | | |