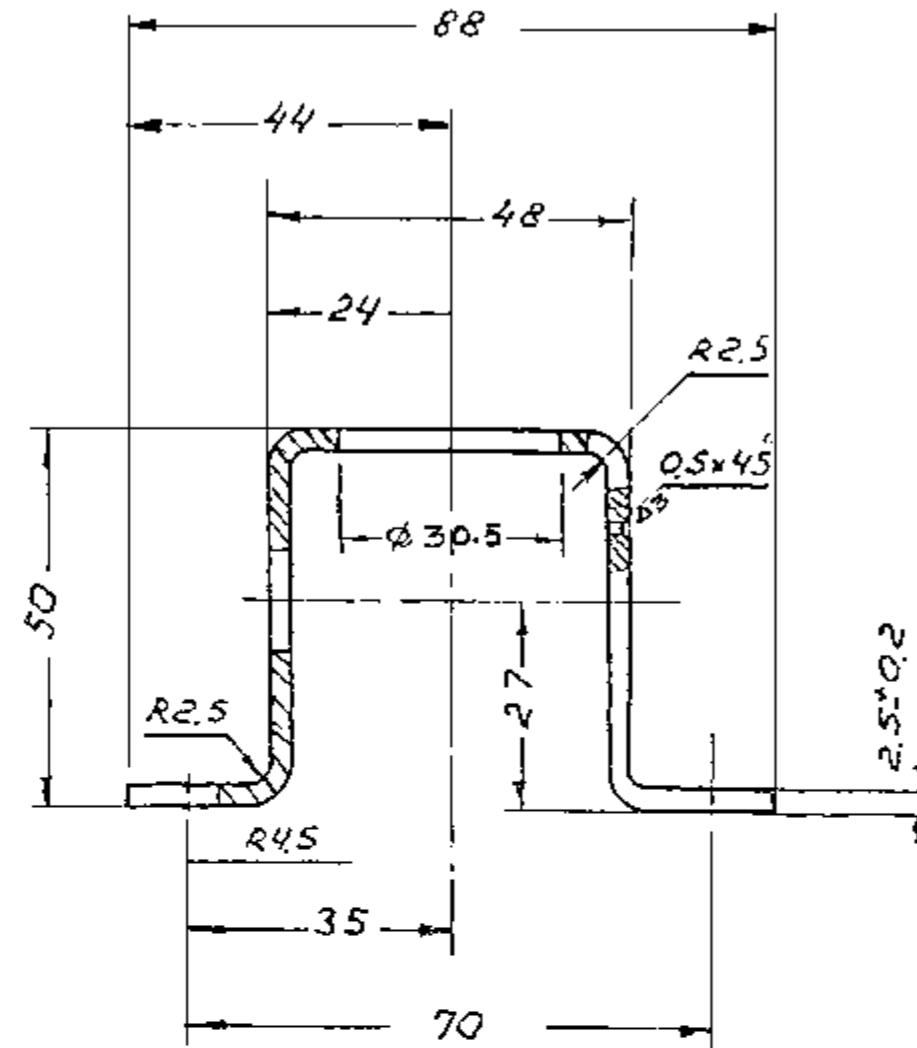
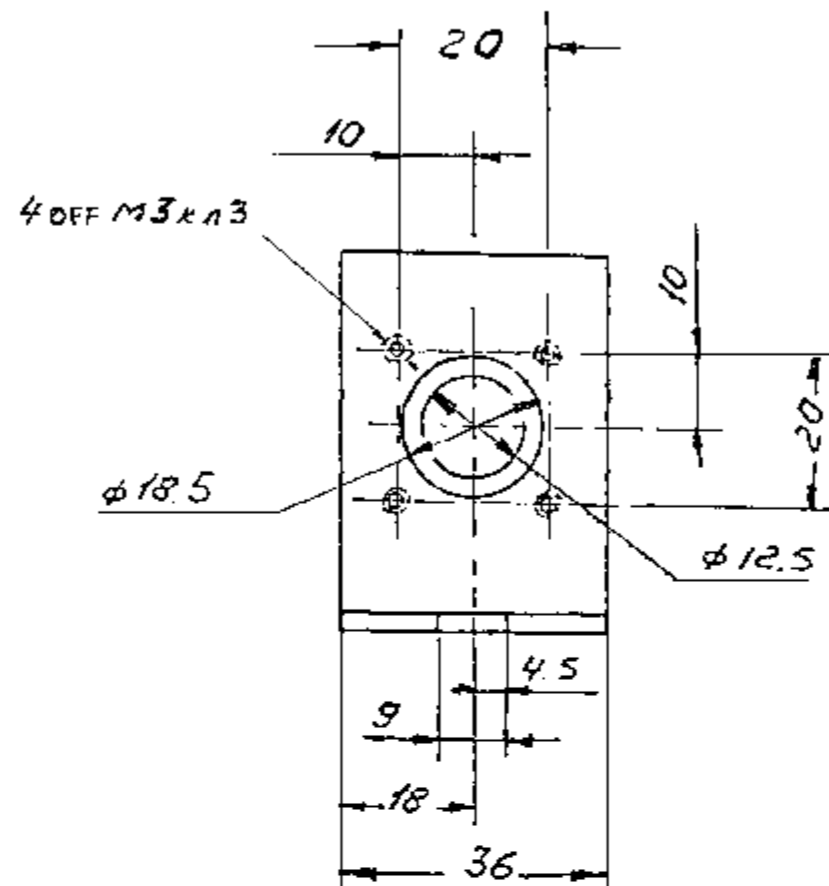


773-71-4

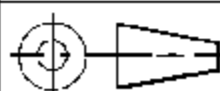


TECHNICAL CONDITIONS

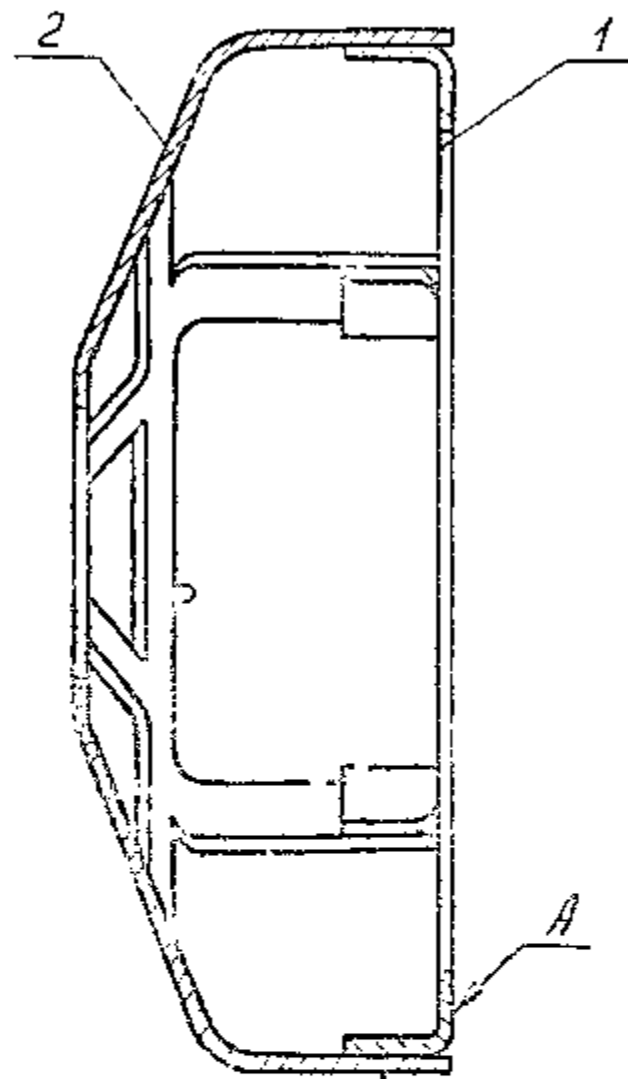
1. BURRS ARE NOT ALLOWED.
2. CARRY OUT DIMENSIONS WITH AN ACCURACY OF ± 0.5 NO DEVIATIONS.
3. SHIFT OF HOLES AXIS AGAINST RATED POSITION - 0.3 MAX.
4. MATERIAL SUBSTITUTE - STEEL 08 Kn, 10 Kn GOST 1050-74.

NOTE:-
THE ABBRIVATIONS AND SYMBOLS ARE
BASED ON RUSSIAN SPECIFICATIONS.

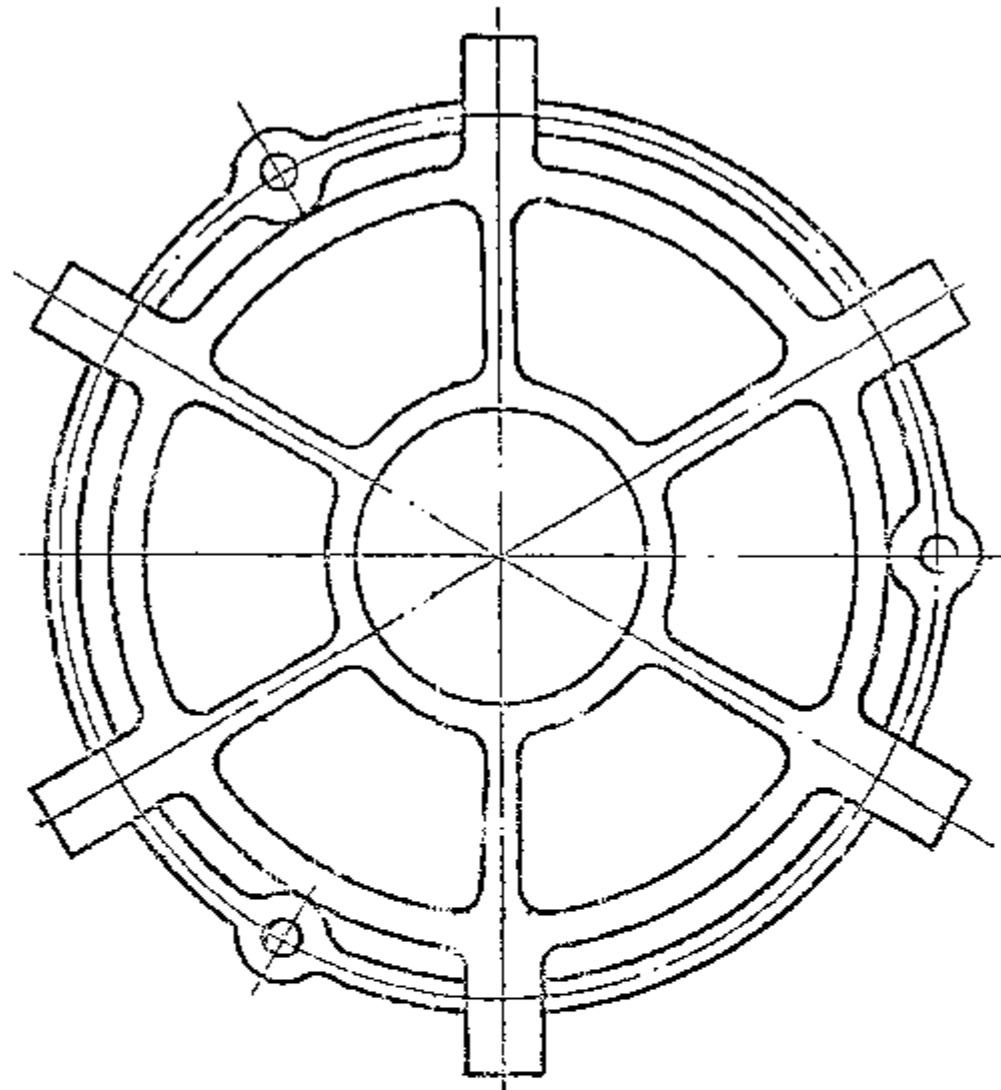
ALL DIMENSIONS ARE IN mm.

NEAREST EQ. MATERIAL			
STEEL 10, GOST 1050-74			
ORGL MATERIAL:-		DC(I)No. & DATE	ISSUE
ALL SHARP EDGES & CORNERS TO BE ROUNDED OFF		AMENDMENTS	
DRG. NOT TO BE SCALED		STAMP OR ETCH, PART No. MANUFACTURER'S NAME & YEAR OF MFR.	
SCALE: 1:1		USED ON: 773-71-Sb103	
DATE: 19 APR 94		TOLERANCE ON DIMENSIONS UNLESS OTHERWISE SPECIFIED	
DRN. Jeyse	WT :- (Kg) 0.08	773-71-4	
TCD.			
CHD APPD		BRACKET	
CONTROLLERATE OF QUALITY ASSURANCE (INFANTRY COMBAT VEHICLES)			

773-71-Sb113Sb



GOST 15878-70 Hf-Km-4



TECHNICAL CONDITIONS

1 PRIME WITH PRIMER ФА-05 *K GOST 9109-81
AND PAINT WITH ENAMEL ПЭ-225 WHITE -1
GOST 14923-78.

2 PROJECTION OF PART REF NO. 2 BEYOND
SURFACE A IS NOT ALLOWED AND SINKING
SHOULD NOT EXCEED 1mm.

NOTE:-
THE ABBRIVATIONS AND SYMBOLS ARE
BASED ON RUSSIAN SPECIFICATIONS.

ALL DIMENSIONS ARE IN mm.

NEAREST EQ. MATERIAL			
ORGL MATERIAL:-		DC(I)No. & DATE	ISSUE
ALL SHARP EDGES & CORNERS TO BE ROUNDED OFF	ALL THREADS TO CONFORM TO SPECIFICATION	AMENDMENTS	
DRG. NOT TO BE SCALED	TOLERANCE ON DIMENSIONS UNLESS OTHERWISE SPECIFIED	STAMP OR ETCH, PART No. MANUFACTURER'S NAME & YEAR OF MFR.	
SCALE: 1:1	USED ON:	773-82-Sb106	
DATE: 19APR 94			
DRN. <i>Jegay</i>	WT :- (Kg) 0.094	773-71-Sb113Sb	
TCD.			
CHD APPD <i>Ar</i> <i>Bob</i>		GUARD	DS CAT No.
CONTROLLERATE OF QUALITY ASSURANCE (INFANTRY COMBAT VEHICLES)			