

7490302702, 41866

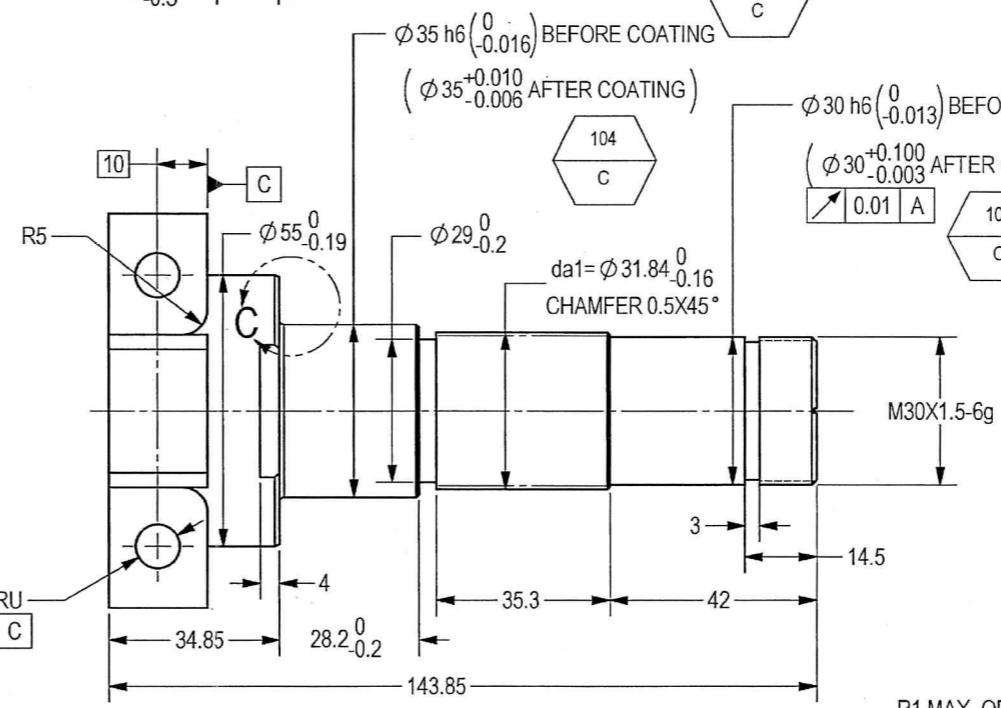
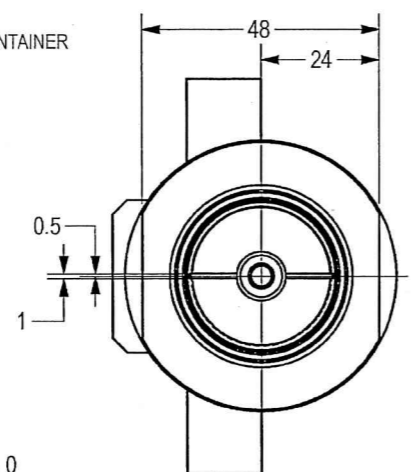
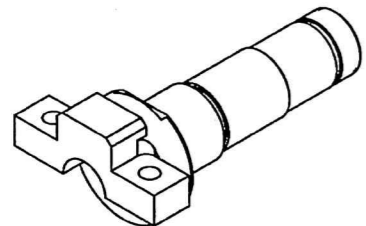
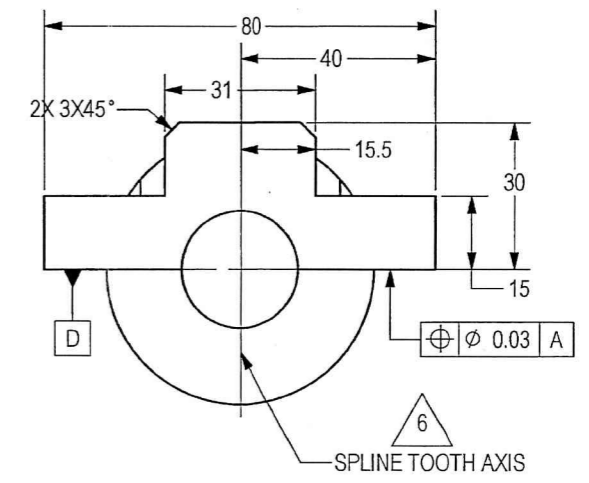
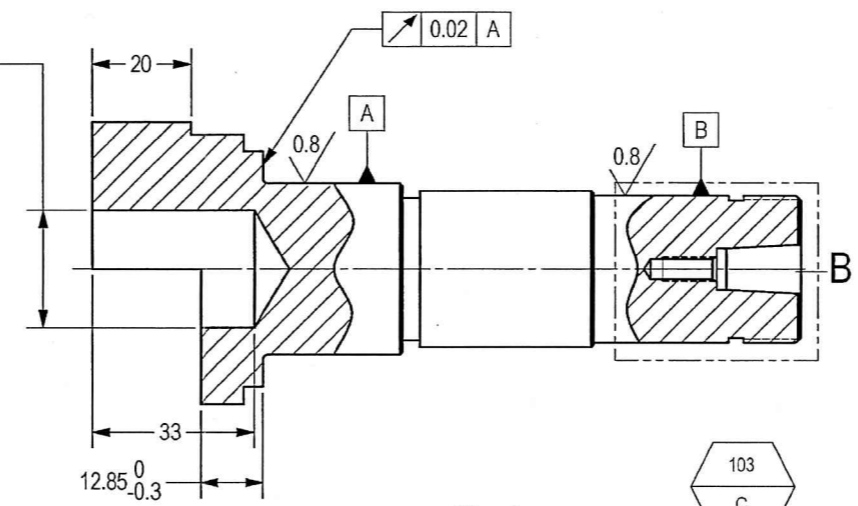
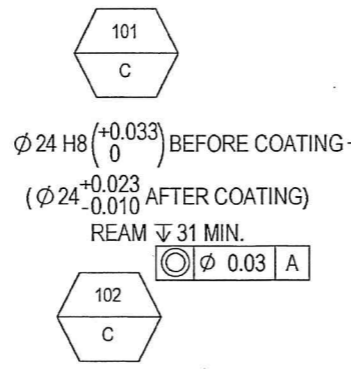
THIS DOCUMENT AND THE INFORMATION CONTAINED IN IT ARE PROPRIETARY AND CONFIDENTIAL TO OFT. NO PERSON OR ENTITY IS ALLOWED TO COPY, REPRINT, REPRODUCE OR PUBLISH ANY PART OF THIS DOCUMENT, NOR DISCLOSE ITS CONTENTS TO OTHERS, NOR MAKE ANY USE OF IT, NOR ALLOW OR ASSIST OTHERS TO MAKE ANY USE OF IT UNLESS BY THE PRIOR WRITTEN EXPRESS AUTHORIZATION OF OFT AND THEN ONLY TO THE EXTENT AUTHORIZED. COPYRIGHT-OFT.

SHEET REV STATUS
ALL SHEETS ARE THE SAME REVISION

REV	ECO	DESCRIPTION	DATE	APVD
03		Freeze	23-Jul-13	
04		Freeze	17-Oct-13	
05		Restricted	29-Dec-13	
06	AF0008/00	Restricted	19-May-14	A. Feinshtein
-	T00084	Identical To Previous	09-Apr-18	L. Goldshtein

NOTES:

- INTERPRET THIS DRAWING IAW ASME Y14.100M.
- MATERIAL: STEEL ALLOY BAR SAE 4130 PER SAE-AMS-S-6758 OR SAE 4340 PER SAE-AMS-S-5000. (EQUIVALENT MATERIAL IS PERMITTED AFTER ELBIT APPROVAL).
- HEAT TREATMENT: QUENCH AND TEMPER ENTIRE PART; HARDNESS 35 ± 4 HRC.
- DEBURR AND REMOVE SHARP EDGES APPROX. 0.3X45°.
- GENERAL TOLERANCES ACCORDING TO ISO 2768-m.
- ANGLE BETWEEN THE SPLINE TOOTH AXIS AND AXIS DATUM SYMBOL E WILL BE MAX. 0°30'.
- FINISH:
 - A DRY FILM LUBRICATION IN A FLUOROPOLYMER ORGANIC RESIN CLASS 2 COLOR MATTE BLACK TYPE 1 15 ± 5 MICRON THICK per VS-1-3-1-165 (or equivalent).
- PROTECT AREA MARKED AFTER PHOSPHATE COATING (SEE SHEET 2)
- THE DIMENSIONS ARE BEFORE COATING.
- QUALITY ASSURANCE PROVISIONS:
 - 9.1 QUALITY ASSURANCE PROVISIONS FOR THIS ITEM PER RD40392477P.
 - 9.2 MAJOR CHARACTERISTICS NRS 101 TO 108.
- PACKAGING AND PACKING: THE FINISHED PART SHALL BE PRESERVED AND PACKAGED IN ACCORDANCE WITH COMMERCIAL PRACTICE.
- IDENTIFY PER MIL-STD-130 PARA 4.1.B, BY LABELLING ITS CONTAINER WITH THE PART NUMBER. CHARACTERS 1.25 MM HIGH.



R1 MAX. OR UNDERCUT F0.6X0.2 DIN 509

DETAIL C SCALE 2:1

UNCONTROLLED COPY
CERTIFIED CORRECT COPY OF APPROVED DRAWINGS AT THIS DATE: 26.11.2020

DWG NO 062815A-00
SH 1

SEE ATTACHED MEDIA

EXTERNAL INVOLUTE SPLINE		
REFERENCE DIAMETER	dB	32
PRESSURE ANGLE	alfa	30°
MODULE	m	0.8
NO. OF TEETH	z	38
SPLINE DATA	-	DIN 5480
ADDENDUM MODIFICATION	x m	0.36
TOOTH DEPTH	h	0.88
SPLINE TOLERANCE	-	DIN 5480 - 7h
BASE TANGENT LENGTH	W7	15.913 0/-0.017
TEST DIMENSION OVER PINS	Me	33.331 0/-0.031
PINS DIMENSION	DM	1.5
PITCH DIAMETER	d	30.4
SHAFT ROOT DIAMETER	df1	30.08 h12
SPLINE RUN-OUT	Fr	0.020
INVOLUTE SPLINE		W32x0.8x30x38x7h

UNLESS OTHERWISE SPECIFIED		SIGNATURE	DATE
DIMENSIONS ARE IN MM PER ASME Y14.5M - 1994		DRAWN	11/12/20
TOLERANCES		CHECKED	
LINEAR	ANGULAR	HOS/DDO	3/1/20
SEE NOTE 5	SEE NOTE 5	OFFICER/PRODN	
1st ANGLE PROJECTION		OFFICER/QC	
		OFFICER/DDO	
SURFACE TEXTURE IN Micro M			

ORDNANCE FACTORY TIRUCHIRAPPALLI			
TITLE		FOR: ELEVATION BEARING ASSY	
SHAFT SPLINE, ELEVATION		OF: 12.7MM SRCG	
SIZE	CAGE CODE	DWG NO	
C	2291A	062815A-00	
SCALE	1:1	AUTOMATED DRAWING (SW)	SHEET 1 OF 2

(WEIGHT APPROX.: 1.070 Kg.)

DETAIL B SCALE 2:1

4

3

2

1

D

D

C

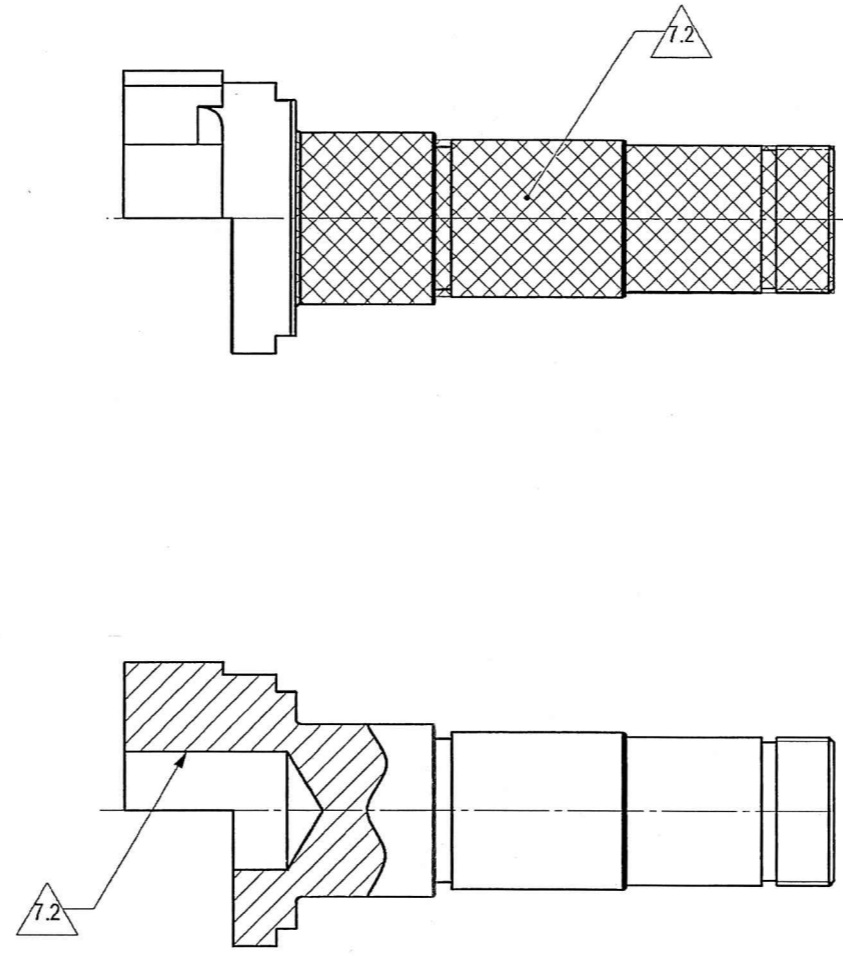
C

B

B

A

A



UNCONTROLLED COPY

UNCONTROLLED COPY

UNAPPROVED DRAWINGS

AT THIS DATE: 26.11.2020

[Signature]

Design & Drawing Office

Ordnance Factory

Woolwich Arsenal, London SE18 6SP

DWG NO
062815A-00

SH
2

SIZE C	CAGE CODE 2291A	DWG NO 062815A-00	REV --
SCALE 1:1		AUTOMATED DRAWING (SW)	SHEET 2 OF 2