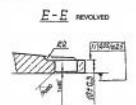
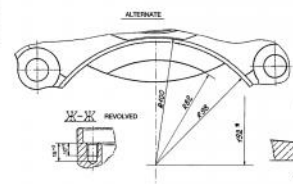
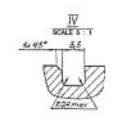
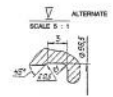
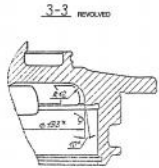
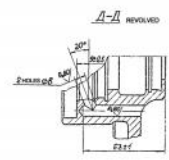
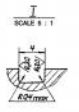
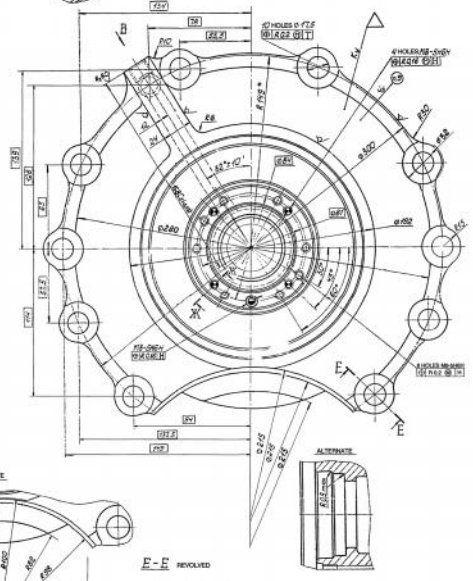
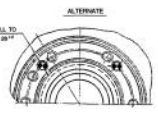
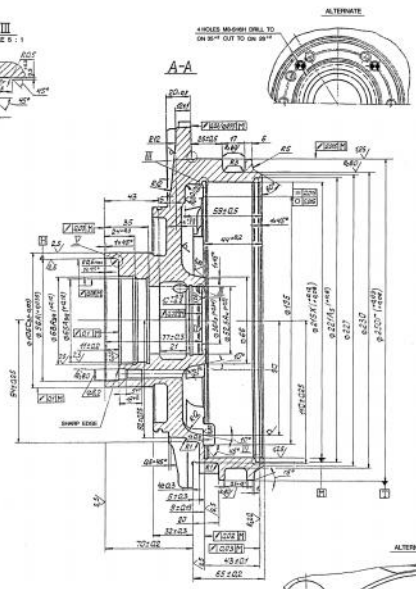
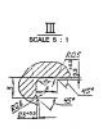
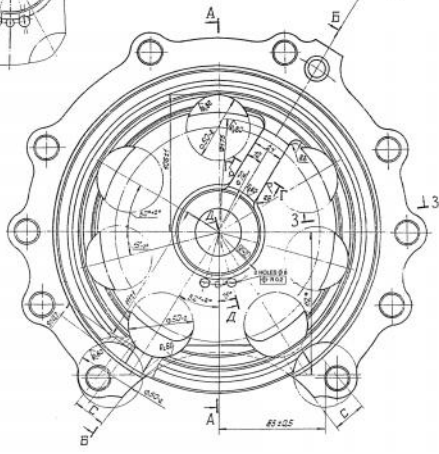
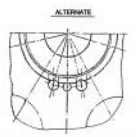
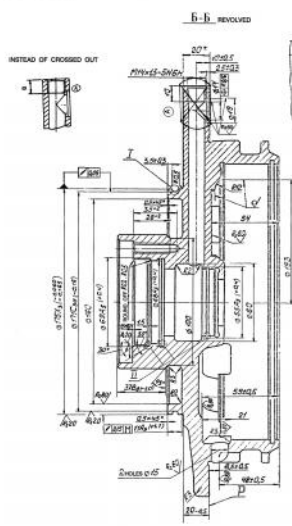


DRAWING NUMBER  
20-01-89-9

SHEET NO. 1 OF 1



1. FINISH GROUP IS AS PER TECHNICAL REQUIREMENTS TT-11 18-02 - 341.
2. REQUIREMENTS PLACED UPON STAMPING ARE AS PER GOVT 84973 AND GOVT 70874 CLASS-1.
3. DIMENSIONAL LIMIT DEVIATIONS OF FINISHING DIMENSIONS ARE AS FOLLOWS: FOR HOLES-AS PER A1, SHAFTS-AS PER B1, OTHERS-AS PER CM1, ANGULAR DIMENSION ± 2'.
4. IMPROVED LIMIT DEVIATIONS OF CHAMFER AND RADIUS DIMENSIONS ARE AS FOLLOWS: 1.53 mm FOR CHAMFER AND RADIUS DIMENSIONS OF 0.5 mm, 3.04 mm FOR CHAMFER AND RADIUS DIMENSIONS FROM 1 TO 3 mm.
5. LAP SURFACE IT AND CHECK IT BY BALING CLOSE FIT SHOULD BE CONFIRMED ON THE DRAW. RESIST ± 0.05 mm.
6. COATING: CHEMICALLY CHROME DIED.
7. LOCAL UNDERLAY OF SURFACE IT UP TO 0.02 mm ON BENCH 'C' SHOULD NOT EXCEED 0.05 mm.
8. DIMENSIONS ARE GIVEN FOR REFERENCE.
9. APPLY MARKING ON THE PARTS TO BE OBTAINED AS SHOWN PARTS.

REV.	DATE	INITIALS	REVISION

DESIGNER	CHKD BY	APPROVED BY	DATE

TITLE: FIRST BEARING BODY  
DRAWING NUMBER: 20-01-89-9

THIS DRAWING IS THE PROPERTY OF THE COMPANY AND IS NOT TO BE REPRODUCED OR TRANSMITTED IN ANY FORM OR BY ANY MEANS, ELECTRONIC OR MECHANICAL, INCLUDING PHOTOCOPYING, RECORDING, OR BY ANY INFORMATION STORAGE AND RETRIEVAL SYSTEM.