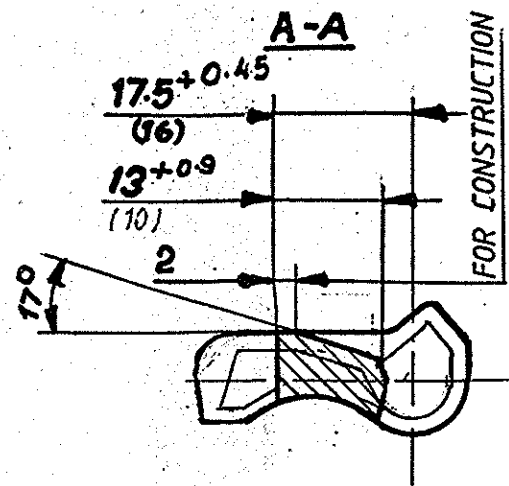
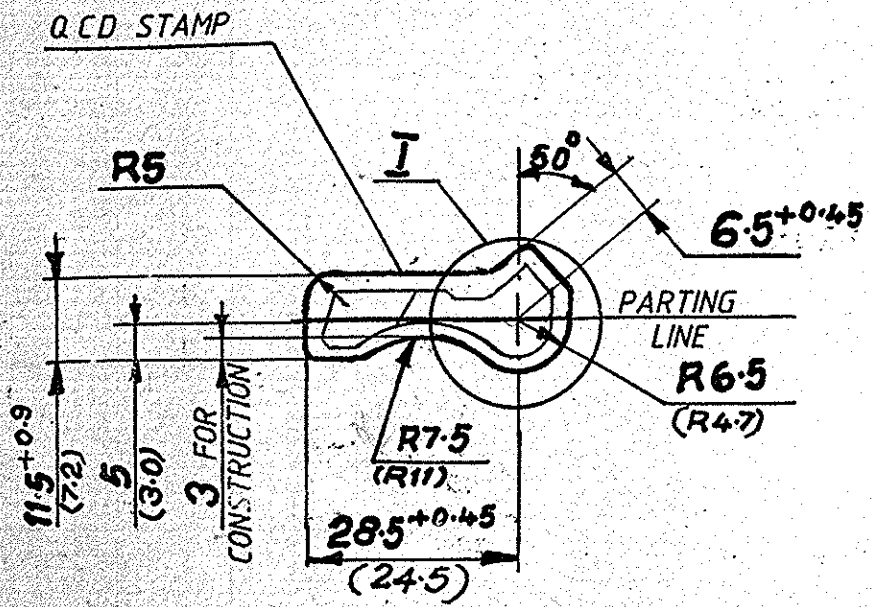


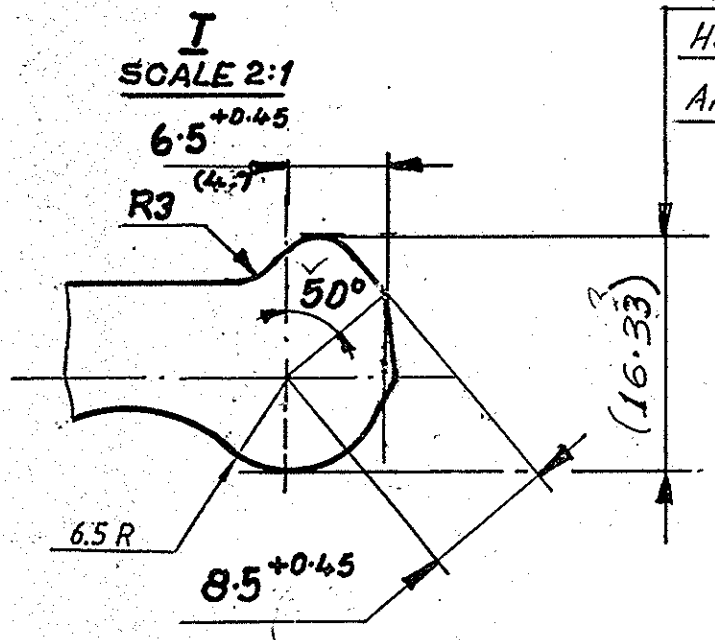
A  
B  
C  
D  
E  
F



**NOTES :-**

1. DIMENSIONS ARE IN mm.
2. FIRST ANGLE PROJECTION.
3. SCALE:- 1:1
4. FORGING OF GROUP II AS PER GOST 8479-70, HB 217 MAX
5. DRAFT ANGLE 7°.
6. UN-SPECIFIED RADII 1.5R.
7. FLASH REMAINDER UP TO 0.6mm.
8. WARPING UP TO 0.4 mm.
9. DIE SHIFTING UP TO 0.4mm.
10. CONVENTIONAL CONTOUR AND DIMENSIONS GIVEN IN BRACKETS PERTAIN TO THE FINISHED PART.
11. STAMP PART NO, MELT NO. AND Q.C.D STAMP ON THE TAG.
12. 5% OF A BATCH SHOULD BE CHECKED FOR HARDNESS AS PER GOST 8479-70.
13. WEIGHT OF THE FORGING 0.110 Kgs.

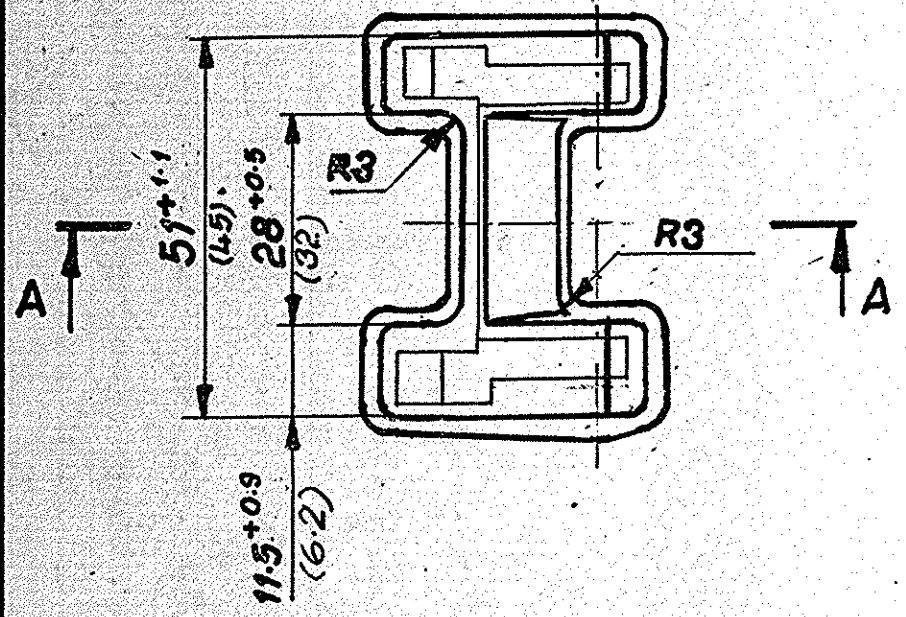
EXTRA DIMS. PROVIDED ONLY FOR REFERENCE. HOWEVER DIMS. R6.5 ; 8.5 +0.45 ; 6.5 +0.45 & 50° ARE TO BE ENSURED IN REFERENCE TO PARTING LINE.



VETTED FOR MATERIAL ONLY

*[Signature]*

Principal Scientific Officer,  
Quality Assurance Officer,  
For Senior Quality Assurance Officer,  
Senior Quality Assurance Estt. (Arms)  
Tiruchirappalli - 620 016.



ALTERNATE MATERIAL  
STEEL GRADE EN 18 BS 970-1955(INDEX 530 M 40  
AS PER BS 970 PART 1: 1983)  
OR  
STEEL GRADE EN 19 BS 970-1955(INDEX 709 M 40  
AS PER BS 970 PART 1: 1983)  
OR  
STEEL GRADE EN 19 A BS 970-1955(INDEX 708 M 40  
AS PER BS 970 PART 1: 1983)  
(REF:-SCT, C/o. O.F. TRICHY. LETTER No. 57/21  
Dt. 23.9.87. FILE No. 4641/PROJ.)

NOTE: BASIC MATL. TO BE SUBJECTED TO MACRO EXAMINATION AS PER SPEN-ASTME-381 TO SATISFY C<sub>2</sub>, R<sub>2</sub> & S<sub>2</sub> NON METALLIC INCLUSION RATING TEST AS PER IS 4183-82 TO BE CARRIED OUT.  
**STRESSED COMPONENT**

HEAT-TREATMENT:-FORGINGS ARE NORMALIZED AND TEMPERED.  
FOR HEAT-TREATMENT SCHEDULE REFER DRAWING  
NO: M 881 SHEET NO: 1 TO 3 AND SHEET NO: 6 SL.NO: 19.

MATERIAL:- STEEL 40X GOST 4543-71, ALT. MET:-  
STEEL 40 X OST 3-98-80

COMPONENT DRG. NO. 6P11-6-26  
PAWL FEED BELT

DRAWING PROVISIONAL DS.CAT NO. 1005007445

C	DIMS (16.33) NEWLY ADDED REF. DA. 32/95.	S. Rana 14.12.95
B	ALTERNATE MATL. EN SERIES ADDED	<i>[Signature]</i> 8.1.88
AMEND- MENTS	DESCRIPTION/DETAILS	SIG & DATE

<i>Sachi</i> 21/10/97	<i>[Signature]</i>	11.87	<i>[Signature]</i> 7.11.87	<i>[Signature]</i>	ORDNANCE FACTORY, TIRUCHIRAPALLI-16.	DRG. NO: 62 C 6026 200 C 3
REDRAWN	CHECKED	APPROVED	I/C. D & DO	DIV. OFFICER		
1	2	3	4	5	6	7 6-26 8