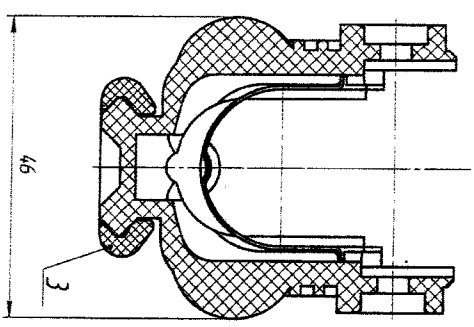
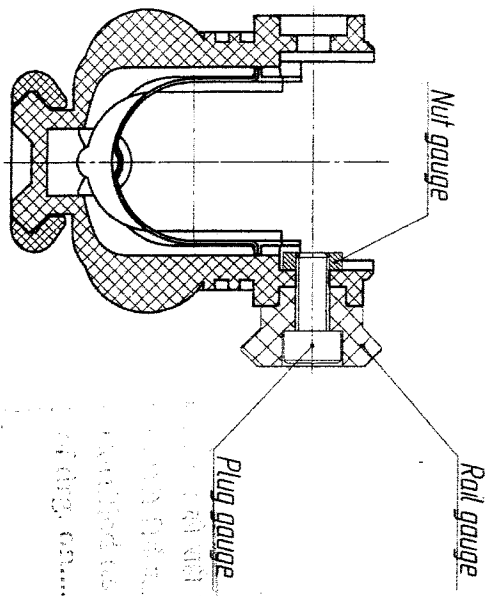


Schematic diagram to check fit of rails set



| S.N. | NOMINCLATURE | DETAILS |
|------|--|--------------------------|
| 1. | FORE END ASSY. DRG (i) END PLATE (ii) Materials : NA 6-211-DE (MRC-21), 120 g first quality grade, GOST 17648-83 | SK-6591/TE SK-6592/TE |
| 2. | SHIELD | SK-6589/TE |
| 3. | LADDER RAIL COVER | SK-6648/TE |

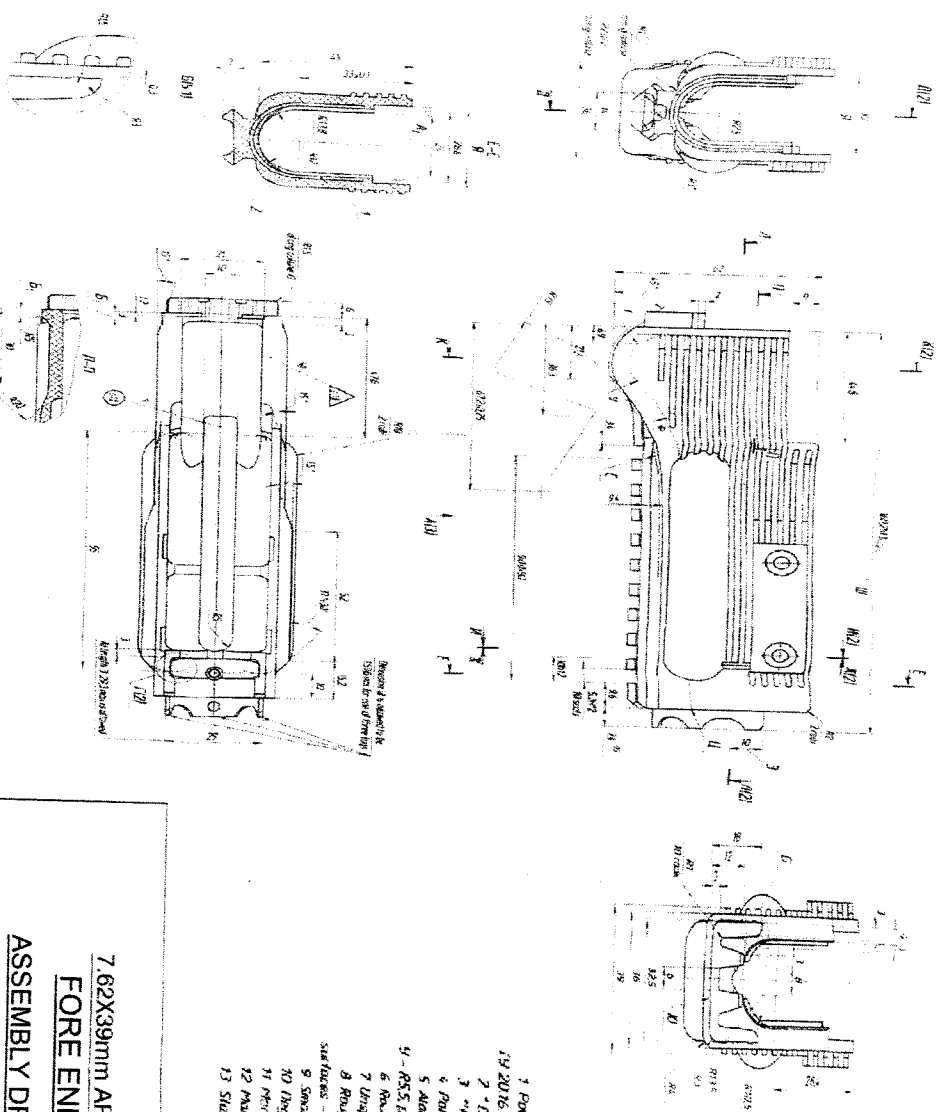
- 1 Reference dimensions
- 2 Appearance of fore end assembly according to control sample
- 3 Rail gauge mounted to fore end. pos. 1 to be tightened with plug gauges through nut gauges to stop. Plug gauges should not unscrew from torque 196 Nm (12 kgf-m). Maximum torque is not checked
- 4 Ladder rail cover pos. 3 should highly fit to fore end rail
- 5 Stamp

Handwritten notes and stamps including 'Hos/mmd', 'oil/ubz', and '5'.

| | | | |
|--------------------|--|--------------------|--|
| 7 62x39mm AR-SAF | | Weight: 175 g | |
| Fore end assembly | | DRAWN BY / CHECKED | |
| Assembly drawing | | DATE: 31/10/2023 | |
| SMALL ARMS FACTORY | | APPROVED | |
| KANPUR | | SK-6647/TE | |
| SCALE: NTS | | SHEET: 1 OF 1 | |

DRG. NO. - SK-6591/TE

D.A. NO.



| S. NO. | NOMINCLATURE | DETAILS |
|--------|--------------|--|
| 1 | END PLATE | SK-6592/TE |
| 2 | Materials :- | IA 6-211-JC (MNC-2J), 120 g first quality grade, GOST 17648-83 |

- 1 Polyamide coloring agent is DASKO KANPURKOL 14 2016 SP-1014-2112285-2018, 18901/72-14, 10x, K (2.96)
- 2 - Dimensions to be observed by user
- 3 - Reference drawing sheets
- 4 - Pattern draft angles are not greater than 7°
- 5 - Along outline C, smooth chamfer of radius from power 1 - 45, 40°
- 6 - Roundness radius $r = 0.5 \text{ mm}$
- 7 - Unqualified tolerances according to GOST 11017-77
- 8 - Roughness of external surfaces - GOST 20, roughness of internal surfaces - GOST 25
- 9 - Smooth and chamfer and chamfer residues with roughness GOST 20
- 10 - Ingress and plate pos. 1
- 11 - Mark signs using last 3 (GOST 26029-85)
- 12 - Mark round number using last 2 (GOST 26029-85)
- 13 - Stamp

7.62X39mm AR-SAF
FORE END
ASSEMBLY DRAWING

SMALL ARMS FACTORY
KANPUR

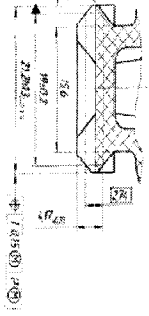
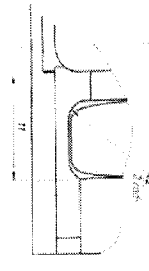
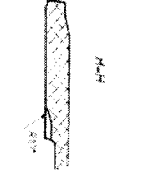
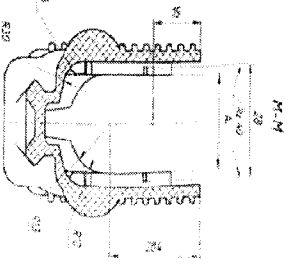
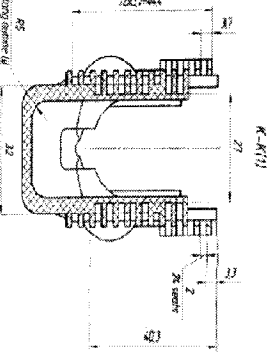
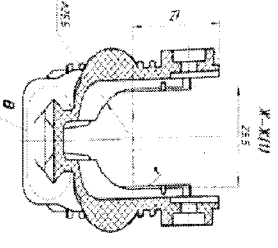
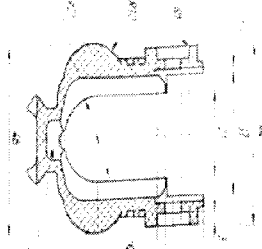
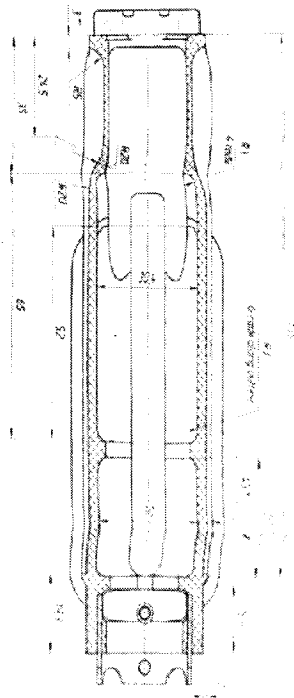
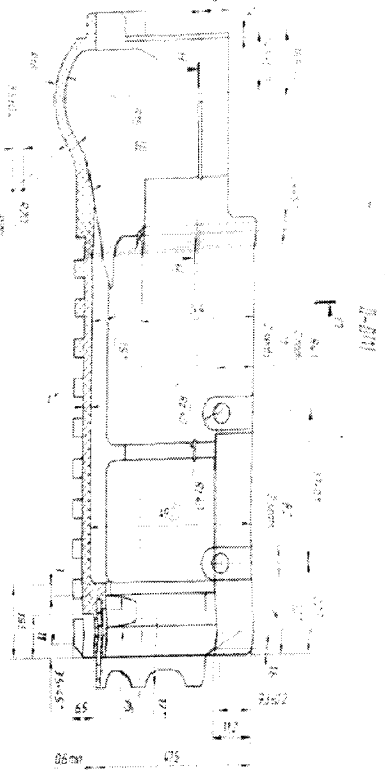
SCALE
1 : 1

| | | |
|----------|------------|------------|
| DRAWN | TRACED | CHECKED |
| DATE | 09-10-2023 | |
| APPROVED | | |
| DRG. NO. | SK-6591/TE | J.W.M./DDO |
| SHT. 1 | OF 3 | |

01/11/23
Hos/Nur

DRG. NO. - SK-6591/TE

D.A. NO.



Handwritten notes:
 Has 1mm
 oil lines

7.62X39mm AR-SAF
FORE END
ASSEMBLY DRAWING

SMALL ARMS FACTORY
KANPUR

| | | |
|----------|------------|---------|
| DRAWN | TRACED | CHECKED |
| DATE | 09-10-2023 | |
| APPROVED | | |

DRG. NO. SK-6591/TE
 J.W.M./DDO

SHT. 2 OF 3

A

B

C

D

E

F

G

H

1

2

3

4

5

6

7

8

9

1

2

3

4

5

6

7

8

9

H

G

F

E

D

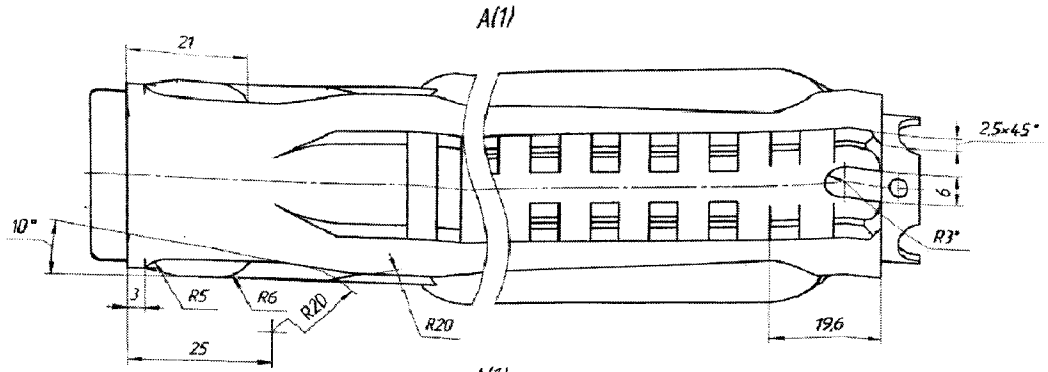
C

B

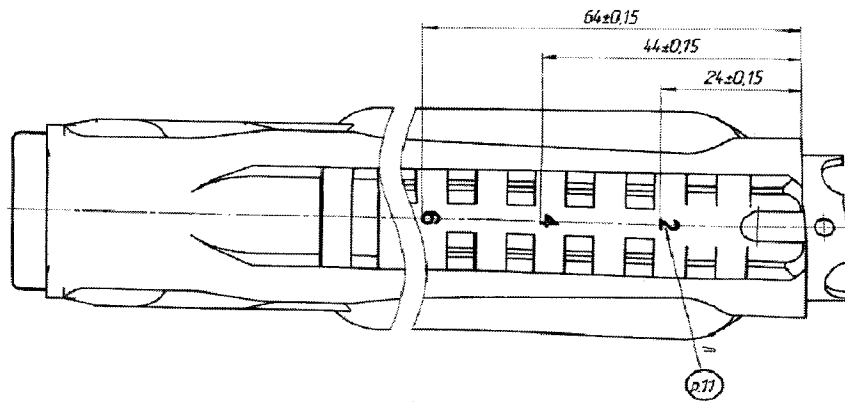
A

DRG. NO. - SK-6591/TE

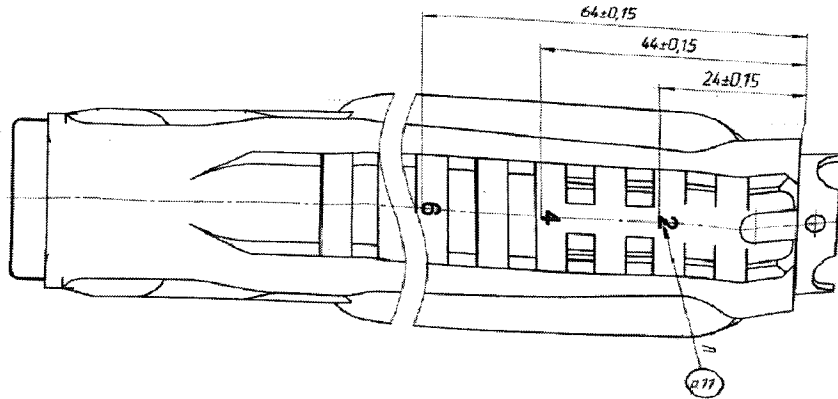
D.A. NO.



A(1)
Variant



A(1)
Variant 1



Handwritten: HOS/AMM

Handwritten: o/ulky

Handwritten: f

7.62X39mm AR-SAF
FORE END
ASSEMBLY DRAWING

DRAWN TRACED CHKD.

A.VERMA

DATE

30-09-2023

APPROVED

JWM/DDO

SCALE

1:1



SMALL ARMS FACTORY
KANPUR

DRG.NO.

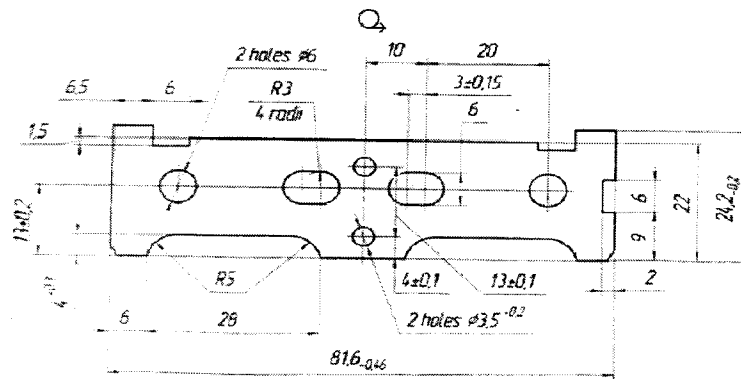
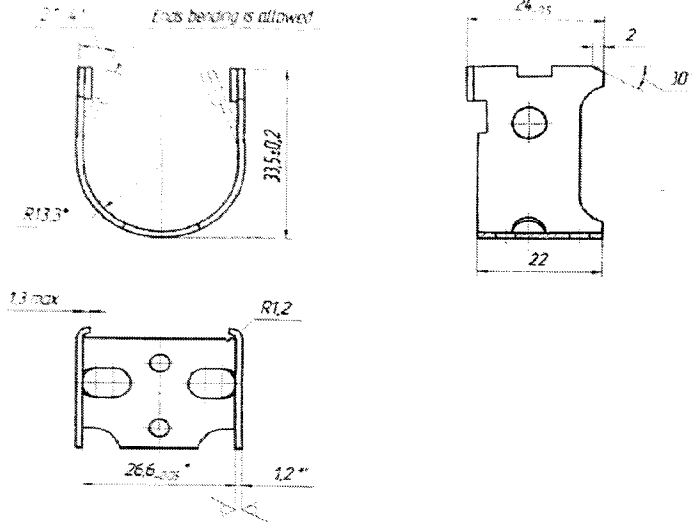
SK-6591/TE

SHEET 3 OF 3

DRG. NO.-SK-6592/TE

D.A. NO.

$\sqrt{Rz 80 (\sqrt{1})}$



Hoslmann
 oiling
 ←

- 1 * Dimensions to be ensured by tool
- 2 * Reference dimension
- 3 Unspecified tolerances according to 6745-1.0874/E2
- 4 Coating is Chem Phos chr

7.62X39mm AR-SAF

END PLATE

| | | |
|-------|--------|-------|
| DRAWN | TRACED | CHKD. |
|-------|--------|-------|

A.VERMA

DATE 10-10-223

APPROVED

JWM/DDO

SCALE

1:1



SMALL ARMS FACTORY
KANPUR

DRG.NO.

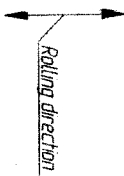
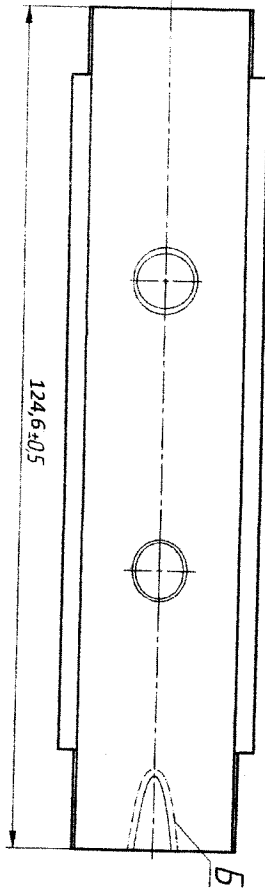
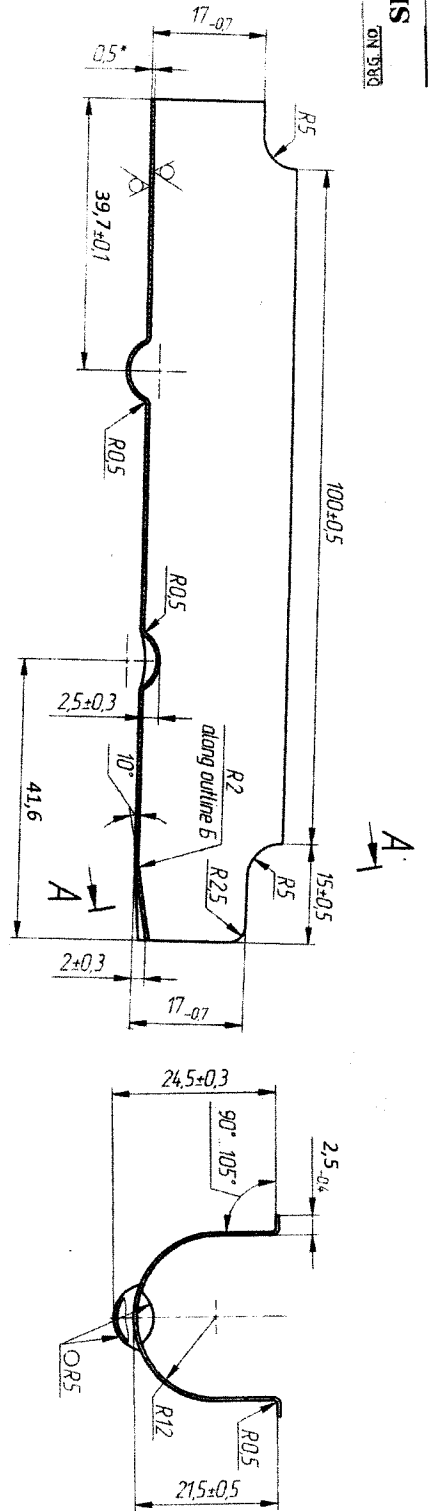
SK-6592/TE

SHEET 1 OF 1

SK-6589-TTE

ON 588

✓ Rz 40 (1)



A-A

- 1 Dimensions to be ensured by tool
- 2 Unspecified tolerances according to 6745-1(CT)/E2
- 3 Reference dimension
- 4 Appearance of surfaces and highlighting marks after stamping according to control sample

Handwritten notes:
 01/10/23
 HOS/1008

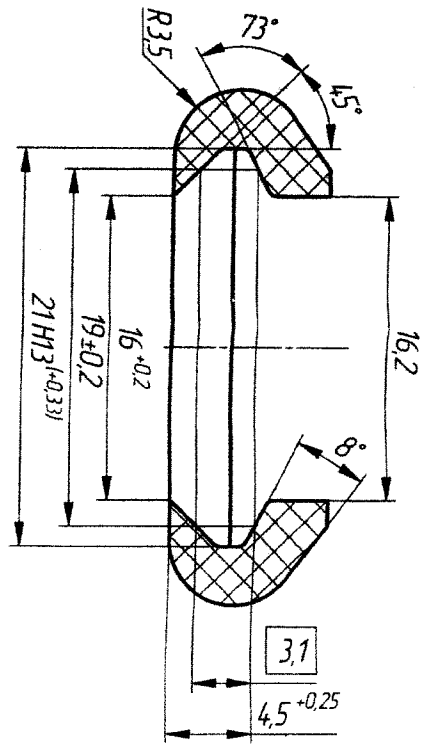
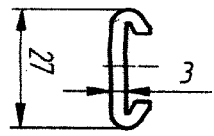
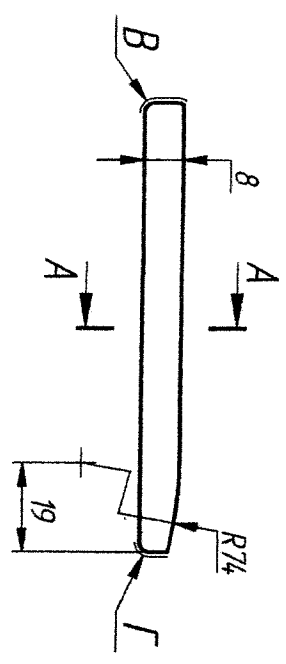
Shp 05x130-M-HI-0-12X18H9-3-A
 GOST 4986-79

| | | | | | |
|------------------|--|------------------------------|--|-------------------------|--|
| SCALE N 1:5 | | SMALL ARMS FACTORY KANPUR | | DRG. NO. SK-6589/TTE | |
| 7 62x39mm AR-SAF | | Shield | | HOS/1008 | |
| DRAWN | | SEEN BY | | CHECKED | |
| DATE 09.10.23 | | APPROVED | | SHT. 1 OF 1 | |

Weight: 25g

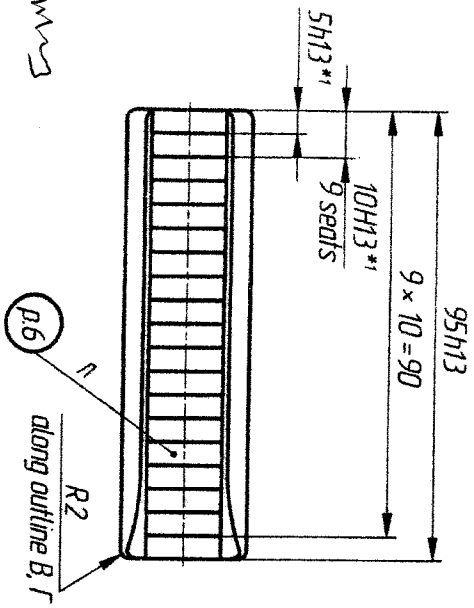
ETL/8499-K SK-6648

DRG. NO.



A-A (4:1)

√Rz 20



along outline B, T

Thermoplastic elastomer *

- 1 * ТЭП МАС 804-100/150 ТУ 224.3-003-6814.2384-2015.
- 2 ** Dimensions to be ensured by tool.
- 3 Unspecified radii are 0.5 mm.
- 4 General tolerances according to 6145-1.01TY/E2.
- 5 Smooth mold split line and flash residues. Roughness of surfaces √Rz 20.
- 6 Mark mold number and mold cavity number. Font 2.5-1p3
- GOST 26.080-85
- 7 Stamp K on lot label.

| | | | | | |
|--------------------|--|-------------------|--|-------------|--|
| SCALE | | 7.62x39mm AR-SAF | | DRG. NO. | |
| N.T.S. | | Ladder rail cover | | SK-6648/TTE | |
| SMALL ARMS FACTORY | | KANPUR | | H05/000 | |
| Weight: 116g | | DRAWN | | SEEN BY | |
| DATE | | 31/10/2023 | | APPROVED | |
| SHT. 1 OF 1 | | DATE | | DATE | |

Handwritten notes: 105/mm, 01/mm, 3

