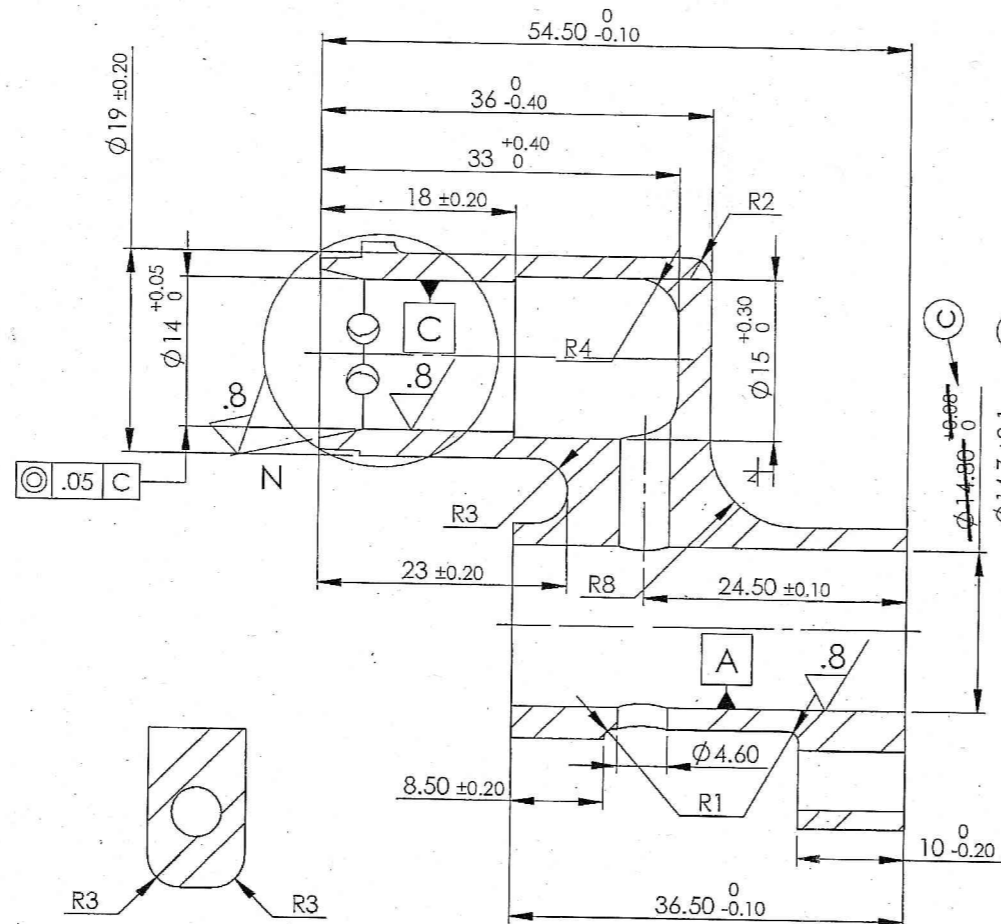
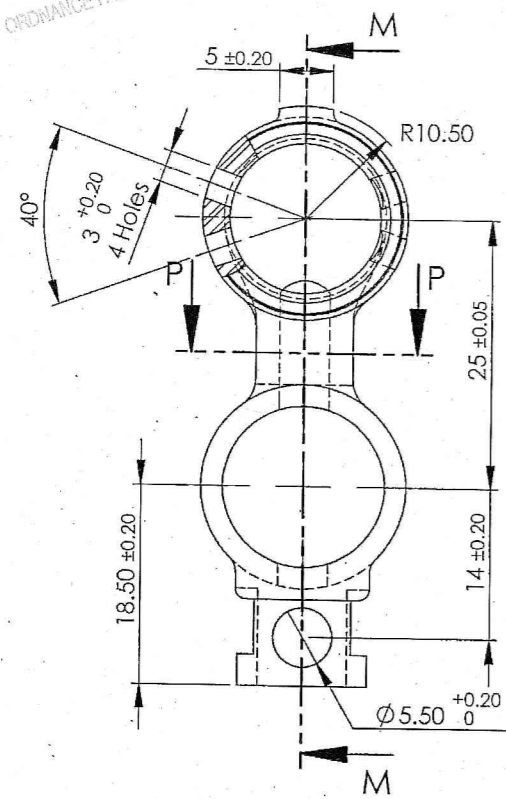
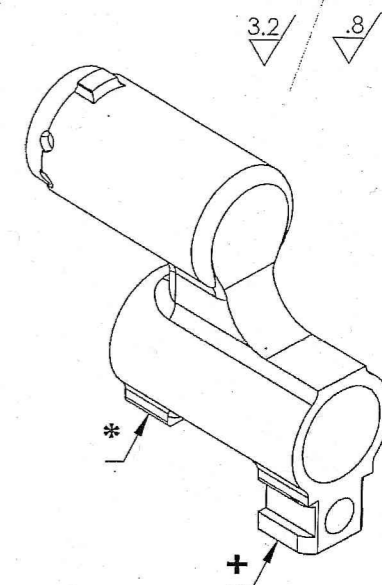
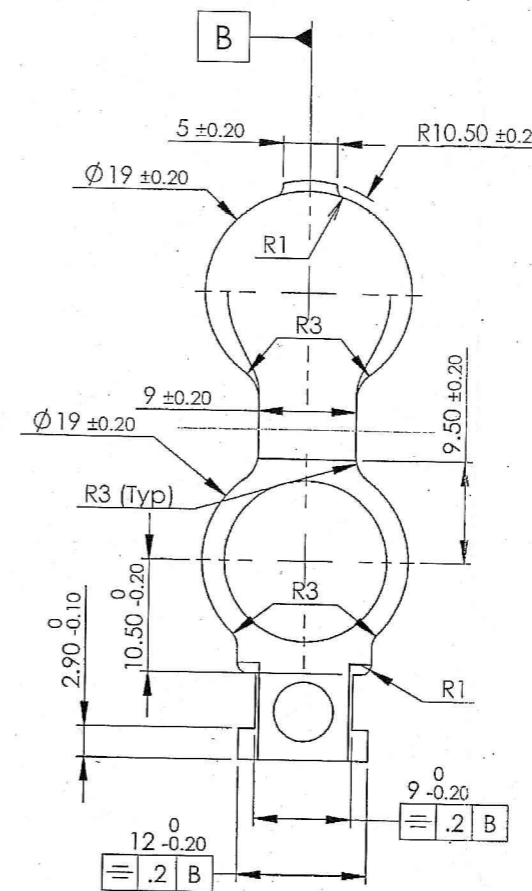


UN CONTROLLED COPY
 CERTIFIED CORRECT COPY OF APPROVED
 DRAWINGS AT THIS DATE. 09/03/23
 DESIGN & DRAWING OFFICE,
 ORDNANCE FACTORY, TIRUCHIRAPPALLI-820 016.



SECTION P-P
 ENLARGED VIEW

SECTION M-M



Material :- Steel

BS:970 Pt.1 1983 Gr 817 M40 (En-24)
 BS:970 Pt.1 1983 Gr 826 M31 (En-25)
 BS:970 Pt.1 1983 Gr 826 M40 (En-26)

Casting Route:

IS:10343-1999, Gr.19Q With
 Mech. Properties
 Re = 1100 Mpa (Min)
 Rm = 1300 Mpa (Min)
 % of Elongation on 5.65 So = 6.0 (Min)
 % Red of Area = 25.0 (Min)
 Charpy Impact = 4.0m Kg.cm2 (Min)

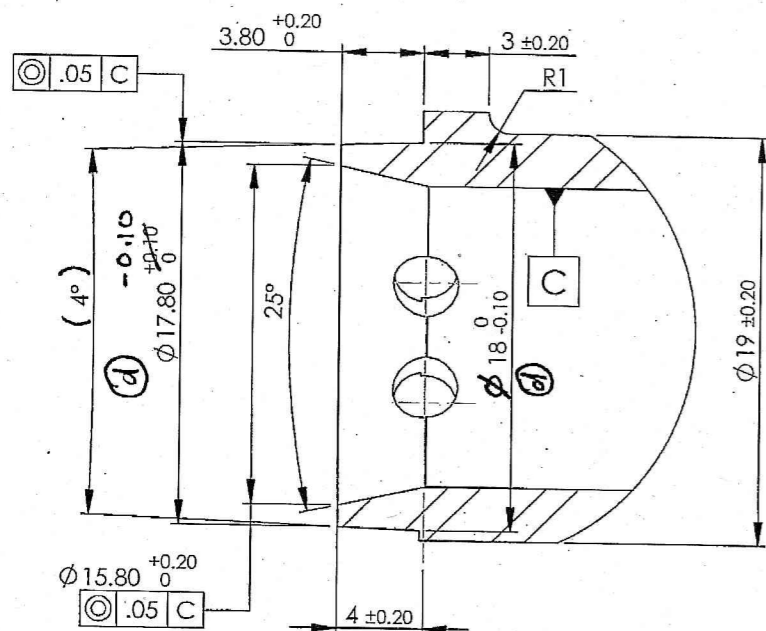
Raiographic Test as per ASTM-E-192

Acceptance Standard:-
 Gas hole & Foreign Material: Level-3
 Shrinkage (All Types) : Level 3

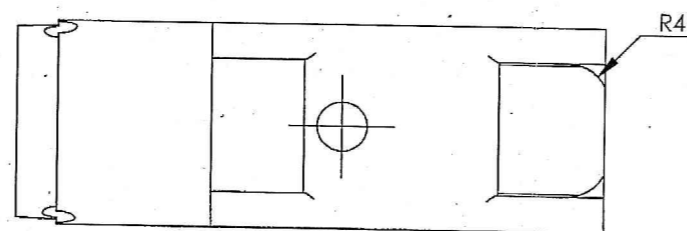
Hardness: 300-350 HV

Protective Finish :
 Accelerated Phospatng to Specn.
 JSS: 0465-01-1994 Class II Oil Finish

Unfollorated Dimensions as per
 IS:2102 (MED)



DETAIL N



MARKING :-
 * MANUFACTURER CODE
 + YEAR OF MANUFACTURE
 ENGRAVING DEPTH 0.1 mm &
 HEIGHT 2.5 mm

①	DA.No. 51/21 Dt. 18/10/21	
②	DA.No. 36/21 Dt. 15/05/21	
③	DA.No. 41/20	04/07/20
④	DA.No. 35/19	06/09/19
AMENDMENTS	SIG. & DATE	

 TRACED DRAWN CHECKED OIC/D&DO OFFICER/ PRODN. DIV.OFFICER/ D&DO APPROVED .ON.03/07/2019	SIGNATURE & DATE. 	SUB: PRE-MACHINED BLANK (FS) GAS PORT BLOCK FOR: Barrel Assy OF: TRICHY ASSAULT RIFLE DES.REF.NO. K1205 DRG. No.: TEND-2611*34	SCALE NTS QPG 1 Weight(g) 81.16 (approx)
	ORDNANCE FACTORY TIRUCHIRAPPALLI-16.	SHEETS: 1 SHEET No.: 1	