

DRAWING NUMBER
172.91.407

SHEET No. 1 OF 1

Rz 500 ✓(✓)

EXPLANATORY NOTE :-

4. REFERENCE MATERIAL QUOTED :- ALUMINIUM ALLOY SHEET 4 mm THICK, ANNEALED (M) WITH TECHNOLOGICAL CLADDING (5) WITH NORMAL SURFACE FINISH TO GOST 21631-76. MANUFACTURED FROM GRADE AMΓ 6 TO GOST 4784-74.

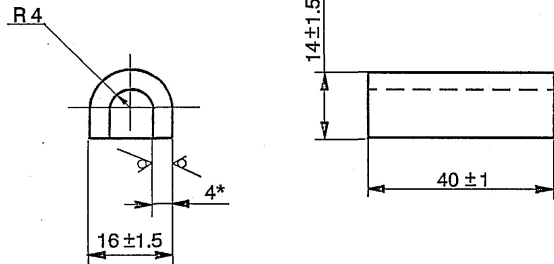
a) CHEMICAL COMPOSITION :-

ALLOY GRADE	ALLOYING CONSTITUENTS					IMPURITIES MAXIMUM				OTHER IMPURITIES	
	Al	Mg	Mn	Ti	Be	Fe	Si	Cu	Zn	EACH INDIVIDUALLY	TOTAL
AMΓ 6	BASE CONSTITUENT	5.8 - 6.8	0.5 - 0.8	0.02 - 0.10	0.0002 - 0.0005	0.4	0.4	0.1	0.2	0.05	0.1

b) MECHANICAL PROPERTIES :- AS PER GOST 21631-76

ALLOY GRADE	MATERIAL CONDITION OF SHEETS	TENSILE STRENGTH Kgf / mm ²	YIELD POINT Kgf / mm ²	ELONGATION %
AMΓ 6	ANNEALED	31.0	15.0	15.0

- ALTERNATE MATERIAL SHEET AMΓ6YM (NON CLADDED) AMΓ6YM AND AMΓ5M GOST 12592-67.
- DRAFTS AND SHRINKAGE OF EDGES ARE ALLOWED.
- * DIMENSION FOR REFERENCE.



DRAWING RE-INDIANISED BASED ON RUSSIAN ORIGINAL ISSUE-1 COMMON TO T-90 & BLT

(R. RAMANJ)
J76
20-06-06

USED ON :-
175.91.019cbCb
175.91.126cb-ACb
175.91.251cbCb
175.91.090cb-ACb
175.91.020cbCb
188.91.005cbCb
188.91.005cb-1Cb
188.91.061cb-1Cb
188.91.011cbCb
188.91.038cbCb

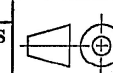
1B) ALT. MATL. GRADE 54300 TO IS 737-86

PILOT SAMPLE SHOULD BE APPROVED BY A H S P BEFORE BULK PRODUCTION.

EST. WT. (Kg) 0.015 TO BE STAMPED OR MARKED WHERE INDICATED THUS # (LETTERS)

ALL SHARP EDGES AND CORNERS TO BE REMOVED UNLESS OTHERWISE STATED MACHINED CORNERS TO HAVE R OUTSIDE R INSIDE EQUIVALENT CHAMFERS ARE PERMISSIBLE.

DRN	Sd/=	MATERIAL :- SHEET AMΓ6 5M-4 GOST 21631-76
CHD	Sd/=	
APPD	Sd/=	
DATE	18.3.86	
SCALE:- 1 : 1		CONTROLLERATE OF QUALITY ASSURANCE (HEAVY VEHICLES) AVADI
DIMENSIONS IN mm		



TITLE :-

CLAMP

F-173

SIZE A3

ISSUE	DATE	NATURE OF AMENDMENTS
1B	19.05.06	AUTHY:-No.80001/CQA(HV)/GEN/A. dt 13.01.06
1A	02.8.04	N OF A No. CQA(HV)/T-90/91/001

D S CAT NUMBER

DRAWING NUMBER
172.91.407