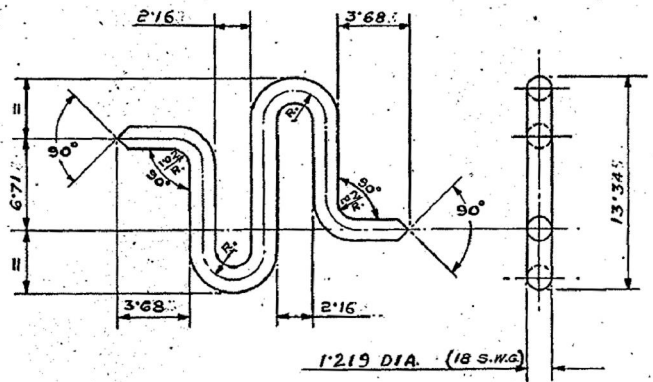


DS. CAT. NO.  
1005-001599

FOR EXPLANATION SEE D.D. NOTE SHEET NO. 3  
THIRD ANGLE PROJECTION. DIMENSIONS ARE IN MILLIMETRES



**ACTUAL SIZE**

**NOTE:-**  
WHERE TOLERANCES ARE NOT SHOWN  
DIMENSIONS IN WHOLE NUMBER OR WITH  
ONE DECIMAL PLACE ± 0.27 mm.  
DIMENSIONS WITH TWO DECIMAL PLACES ± 0.13 mm.

**FINISH**  
PHOSPHATE TO SPEN. JSS:0465:01-1988  
CLASS 1, OIL FINISH.

MATL: ~~SS 304~~ OR ~~SS 316~~  
OR IS: 4454-1987  
IS: 4454 Pt.1, 2001 GRADE 'DH'

ICR-1255 METRIC

ASSY. DRG. 1005-001597	
INSP. INSTRS.	
DRAWN CHECKED TRACED TRN. CHD.	
APPROVED	
DATE: 19.6.67	
DESIGNER'S REF. ARDE 657/106	
DS. CAT. NO. 1005-001599	
CISA. ICHAPUR	

24.9.97	23923-SA	FINISH NOTE AMENDED
25.5.83	17595-SA	MATL. AMENDED
9.2.77	15019-SA	DRG. SEALED
DATE	AUTHY. ZONE	NATURE

**AMENDMENTS**

SEALED :- D.C.O. 15019-SA DT. 9.2.77  
MATERIAL :- ~~SS 304~~ OR ~~SS 316~~  
PROTECTIVE FINISH :- AS STATED  
ESTIMATED WEIGHT :-  
SCALE :-

**DETENT ZEROING SCREW**