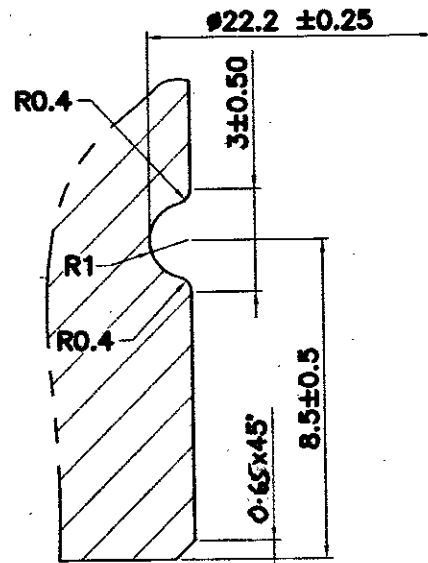
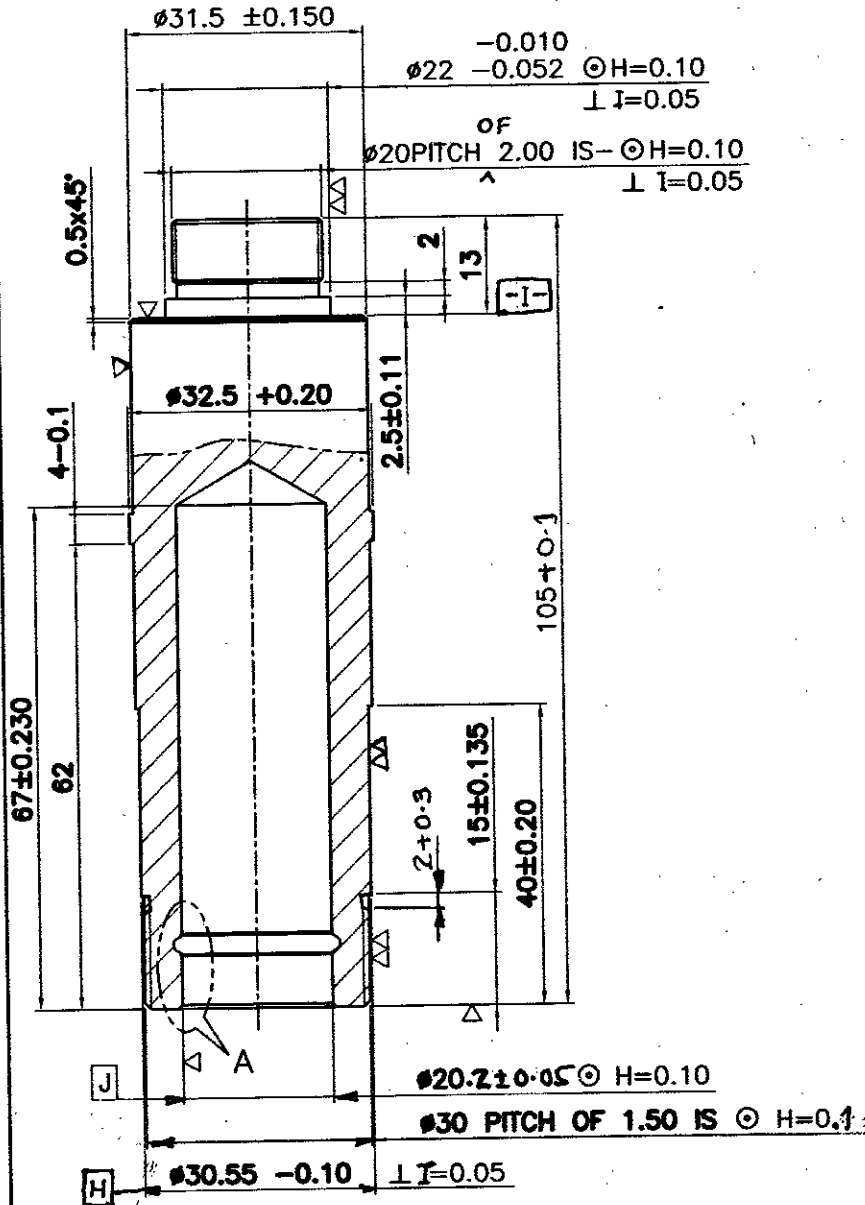


DRG. NO: FS-2956C

AMENDMENTS

REV	DATE	DESCRIPTION	SIGN
A <del>184</del> 11	23/7/11	On dia 30 pitch of 1.5 is $\odot H=0.1$ was $\odot H=0.01$ .	<i>[Signature]</i> Anm/ES
B <del>57</del> 13	12/4/13	Dim 20.2 $\pm 0.05$ was $\phi 20 \pm 0.1$ & chamfer $0.5 \times 45^\circ$ was $0.5 \times 45^\circ$ Dim adv. to B	<i>[Signature]</i> Anm/ES
C <del>26</del> 2014	4.2.14	ALT. MATL. ADDED & UPDATED AS PER LATEST DC 37344-A Dt. 9.10.13	<i>[Signature]</i>



VIEW AT 'A'  
SCALE: 5:1

MATERIAL:- (AMD 5879, FEB 89)  
BS1474:1987 HE 15 TF OR  
IS:733-1983 (THIRD REVISION) ALLOY  
DESIGNATION 24345 WP.

ALT.MATERIAL: AL. ALLOY RDE 40 WITH  
MINIMUM MECHANICAL PROPERTIES  
AS UNDER 0.2% PS-435 MPa, %EL-7

NOTE:-

- TOLERANCE UNLESS OTHERWISE STATED =  $\pm 0.1$
- THOUGH SURFACE TREATMENT IS NOT TO BE DONE, SURFACE OF THE COMPONENT SHOULD BE PROPERLY PROTECTED TO AVOID STORAGE & TRANSIT DETERIORATION.
- ALL BURRS TO BE REMOVED AFTER DRILLING.



DIMENSIONS ARE IN mm			MATERIAL: AS STATED		ऑर्डनेंस फैक्टरी अम्बाझरी ORDNANCE FACTORY AMBAZHARI
THIRD ANGLE PROJECTION			NOMENCLATURE:		
SCALE: 1:1			SEMI-FINISH CONTAINER CARTRIDGE (TURNED FINISH EXCEPT CENTRE HOLE)		DRG. NO. FS-2956 C
2010	NAME	DATE	M/c.- STORE:		SHEET NO. 1
DRAWN	सतिश वाडबुधे	25-10-2010			NO. OFF SHEETS 1
CHECKED	<i>[Signature]</i>		81mm MORTAR		OPERATION -
I/C/CDD	<i>[Signature]</i>				COMPT: CONTAINER CARTRIDGE (TV-30)
APPVD.	Jt.GM/FS	<i>[Signature]</i>			