

NOTE - 1
 BOTTOM OF DRUM TO BE STAMPED AS FOLLOWS
 1. **CYL 12 A** TO BE STAMPED 25 mm LETTERING FROM OUTSIDE
 2. * - YEAR OF MFG. & MONTH OF MFG. TO BE STAMPED WITH 13 mm LETTERING FROM OUTSIDE
 3. **X** - MANUFACTURER'S INITIAL OR RECOGNIZED TRADE MARK WITH 13 mm LETTERING

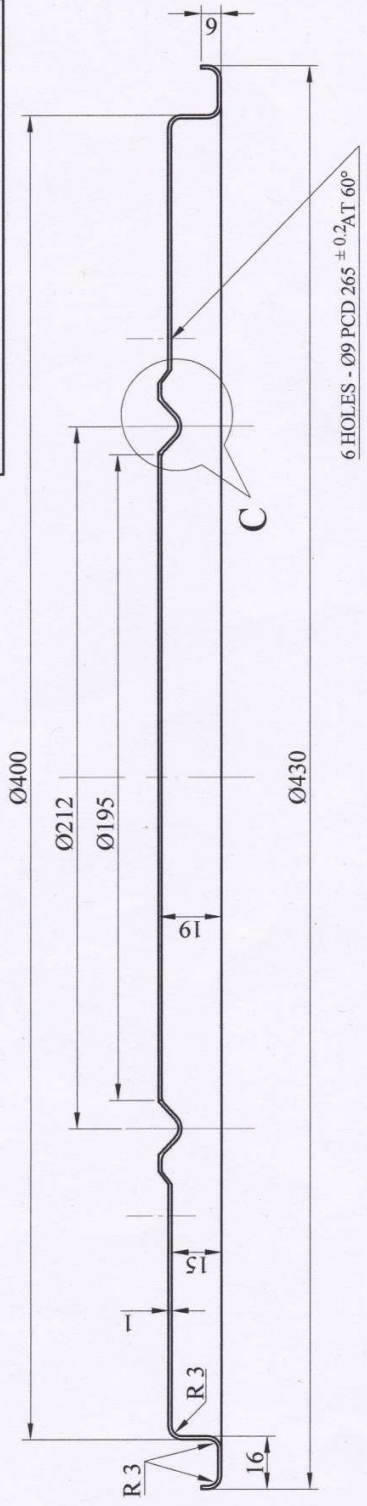
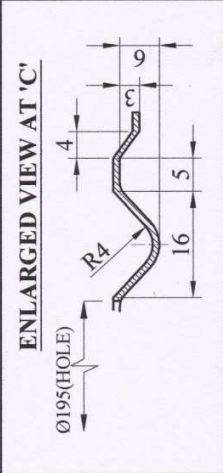
NOTE - 2
 TOLERANCE TO IS: 2102 MEDIUM

NOTE - 3
 MATERIAL:- MILD STEEL TO SPECN B.S. 1449 PT 3 B 1964 CS4 CRCA OR IS 513-1994 CRCA BEST SURFACE GRD 'D'

USER SIGN : <i>Handwritten signature</i>		SIGN	DATE
DRN	John Clement		24.05.19
CHD	<i>Handwritten signature</i>		04.06.19
APPD	<i>Handwritten signature</i>		07.06.19
AUTHD	<i>Handwritten signature</i>		08.06.19

ALL DIMS ARE IN MM	MATERIAL : AS ABOVE	DRG.No.
SCALE :- AS ABOVE	TITLE BOTTOM FOR PRB DRUM	12 S 014 / 1
	CORDITE FACTORY- ARUVANKADU	

DRAWING DRAWN BASED ON CD SECTION Lt. No. CD 129/PV Dt. 02.05.2019 & O.F.BHUSAWAL-DRG No. OFB/C/1543



USER SIGN : *[Signature]* HBS/CD

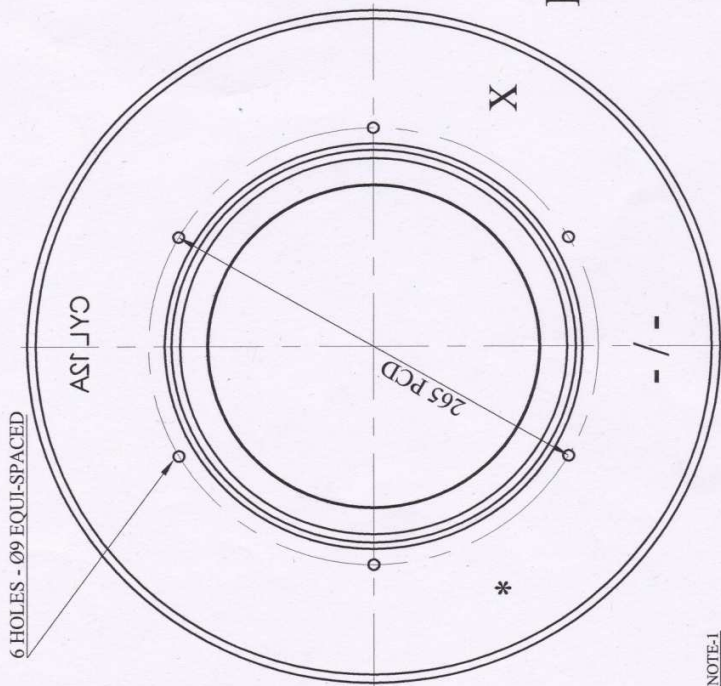
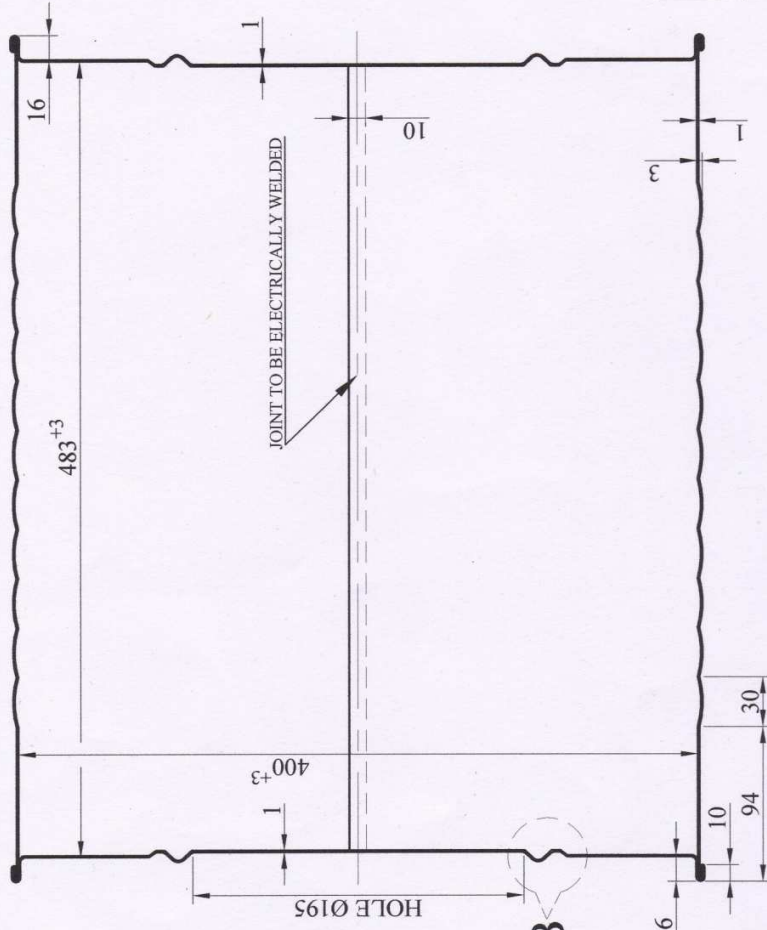
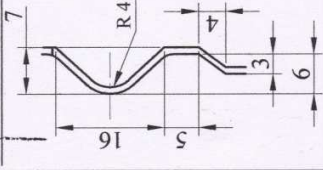
NOTE
 MATERIAL:- MILD STEEL TO SPECN B.S. 1449 PT 3 B 1964 CS4 CRCA OR IS 513-1994 CRCA BEST SURFACE GRD 'D'

DRN	SIGN	DATE
CHD	<i>[Signature]</i>	27.05.19
APPD	<i>[Signature]</i>	04.06.19
AUTHD	<i>[Signature]</i>	07.06.19
DRG.No.		08.06.19

DIMNS IN MM UNLESS OTHERWISE STATED	MATERIAL : AS ABOVE
TITLE	
TOP FOR PRB DRUM	
SCALE : - 1 : 2	DRG.No.
	12 S 014 / 2
CORDITE FACTORY-ARUVANKADU	

DRAWING DRAWN BASED ON CD SECTION Lr. No. CD 129/PV Dt. 02.05.2019 & O.F. BHUSA WAL-DRG No. OFB/C/1544

ENLARGED VIEW AT 'B'



NOTE-1

ITEM No. 1 TOP FOR STEEL PRB DRUM CYLINDER 12 A (REF. - DRAWING No.12 S 014 / 2

NOTE-2

ITEM No. 2 BOTTOM FOR STEEL PRB DRUM CYLINDER 12 A (REF. - DRAWING No. 12 S 014 / 1

NOTE-3

CYL 12A SERIAL No MARK TO BE STAMPED FROM OUT SIDE IN 25mm LETTERING AND

- / - PART No. / DS CAT No. TO BE STAMPED FROM OUTSIDE IN 13 mm LETTERING

NOTE-4

TO BE STAMPED IN 13 mm LETTERING * YEAR OF MANUFACTURE (MONTH & YEAR)

X MANUFACTURER'S INITIAL OR RECOGNIZED TRADE MARK

NOTE-5

MATERIAL:- MILD STEEL TO SPECN B.S. 1449 PT 3 B 1964 CS4 CRCA OR

IS 513: 63 CRCA BEST SURFACE TYPE 'D'

NOTE-6

TOLERANCE SHOULD CONFORM TO SPECIFICATION MEDIUM IS: 2102

DRAWING DRAWN BASED ON CD SECTION Lt. No. CD 129/PV Dt. 02.05.2019 &

O.F.BHUSAWAL-DRG No. OFB/C/1161

USER SIGN :

M. Hos/cd

SIGN	DATE
<i>John Clement</i>	27.05.19
<i>[Signature]</i>	04.06.19
<i>[Signature]</i>	07.06.19
<i>[Signature]</i>	08.06.19

DRN	CHD	APPD	AUTHD

DIMNS IN MM UNLESS OTHERWISE STATED	MATERIAL : AS ABOVE
TITLE	BODY FOR PRB DRUM
SCALE :- 1 : 4	

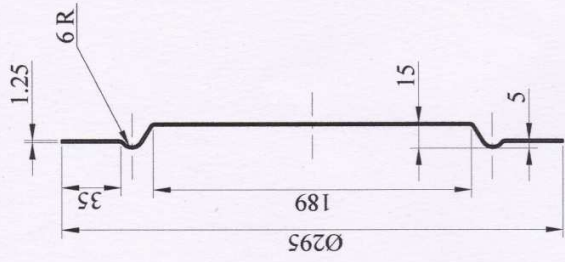
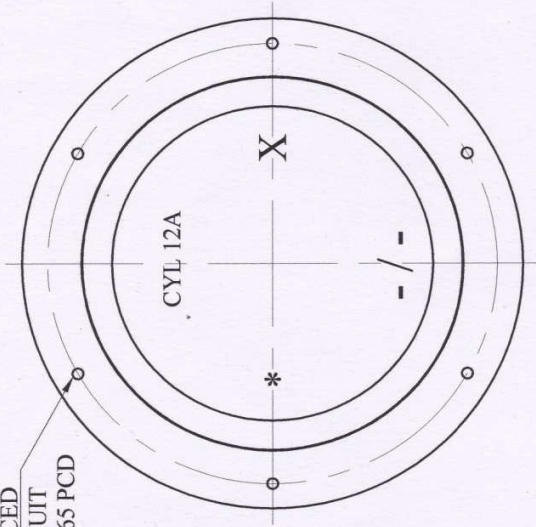
DRG.No.

12 S 014 / 3

CORDITE FACTORY- ARUVANKADU



6 EQUI-SPACED
HOLES TO SUIT
M6-6g ON 265 PCD



NOTE-1

CYL 12A SERIAL No MARK TO BE STAMPED FROM OUT SIDE IN 25mm LETTERING AND

- / - PART No. / DS CAT No. TO BE STAMPED FROM OUTSIDE IN 15 mm LETTERING

NOTE-2

TO BE STAMPED IN 13 mm LETTERING * YEAR OF MANUFACTURE (MONTH & YEAR)

X MANUFACTURER'S INITIAL OR RECOGNIZED TRADE MARK

NOTE-3

MATERIAL:- MILD STEEL TO SPECN B.S. 1449 PT 3 B 1964 CS4 CRCA OR IS 513: 63 CRCA BEST SURFACE TYPE 'D'

NOTE-4

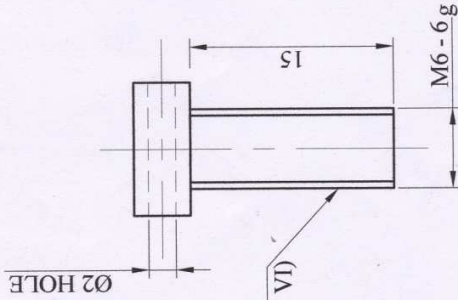
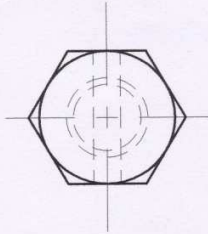
TOLERANCE SHOULD CONFORM TO SPECIFICATION 'MEDIUM IS: 2102'

NOTE-5

DRG. CONVENTIONS CONFORM TO IS:696

DRAWING DRAWN BASED ON CD SECTION Lt. No. CD 129/PV Dt. 02.05.2019 & O.F. BHUSAWAL-DRG No. QFB/C/1162

DIMENS IN MM UNLESS OTHERWISE STATED		MATERIAL : AS ABOVE		USER SIGN :	
TITLE		DRN	SIGN	DATE	
LID FOR PRB DRUM		CHD	John Clement	27.05.19	
		APPD		04.06.19	
		AUTHD		07.06.19	
SCALE :- 1:4		DRG.No.		12 S 014 / 4	
		CORDITE FACTORY- ARUVANKADU			



FOR THREAD DETAILS REFER
SPECIFICATION IS : 4218 (PART VI)

NOTE-1

MATERIAL:- STEEL TO SPECIFICATION: IS 226 ST 42S
OR BS: 970 PTI 1972 STEEL 040 A 10

NOTE-2

TOLERANCE SHOULD CONFORM TO SPECIFICATION 'MEDIUM IS: 2102'

NOTE-3

DRG. CONVENTIONS CONFORM TO IS:696

NOTE-4

TO BE RUSTPROOFED BY ANY APPROVED PROCESS

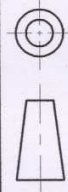
DIMNS IN MM UNLESS OTHERWISE STATED

MATERIAL : AS ABOVE

TITLE

**BOLT
FOR PRB DRUM**

SCALE : - 2: 1



CORDITE FACTORY- ARUVANKADU

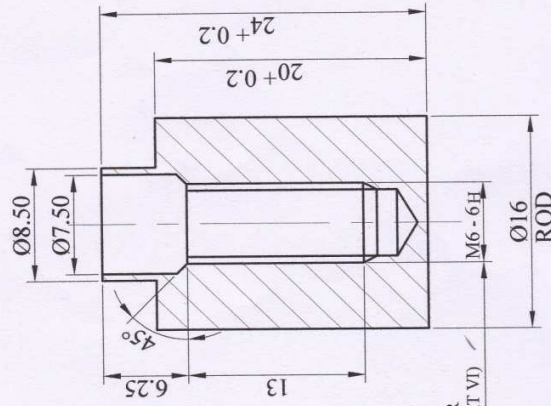
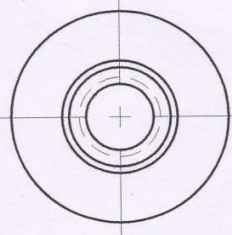
DRG.No.

12 S 014 / 5

USER SIGN :

M.S. / H.S./CD

DRN	SIGN	DATE
CHD	John Clement	27.05.19
APPD	<i>[Signature]</i>	04.06.19
AUTHD	<i>[Signature]</i>	07.06.19
	<i>[Signature]</i>	08.06.19



FOR THREAD DETAILS REFER
SPECIFICATION IS : 4218 (PART VI)

NOTE-1

MATERIAL:- STEEL TO SPECIFICATION:- IS 226 ST 42S
OR BS: 970 PTT 1972 STEEL 040 A 10

NOTE-2

TOLERANCE SHOULD CONFORM TO SPECIFICATION MEDIUM IS: 2102

NOTE-3

DRG. CONVENTIONS CONFORM TO IS:696

NOTE-4

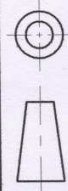
TO BE RUST PROOFED BY ANY APPROVED PROCESS

MATERIAL : AS ABOVE

TITLE

**CUP
FOR PRB DRUM**

SCALE : - 2 : 1



CORDITE FACTORY- ARUVANKADU

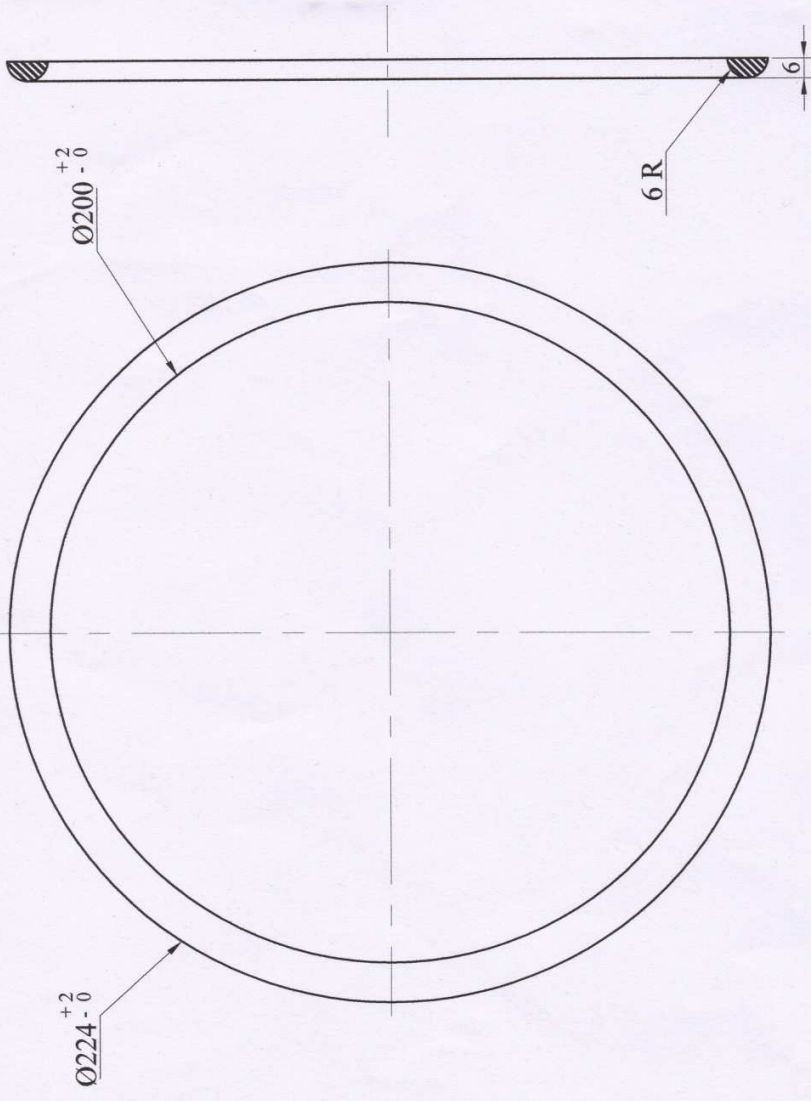
USER SIGN :

[Handwritten signature]
HOS/CD

DRN	SIGN	DATE
CHD	<i>[Signature]</i>	28.05.19
APPD	<i>[Signature]</i>	04.06.19
AUTHD	<i>[Signature]</i>	07.06.19
	<i>[Signature]</i>	08.06.19

DRG.No.

12 S 014 / 6



USER SIGN : *[Signature]* H.S.C.P

DRN	SIGN	DATE
CHD	<i>[Signature]</i>	28.05.19
APPD	<i>[Signature]</i>	04.06.19
AUTHD	<i>[Signature]</i>	07.06.19
		08.06.19

DRG.No.
12 S 014 / 7

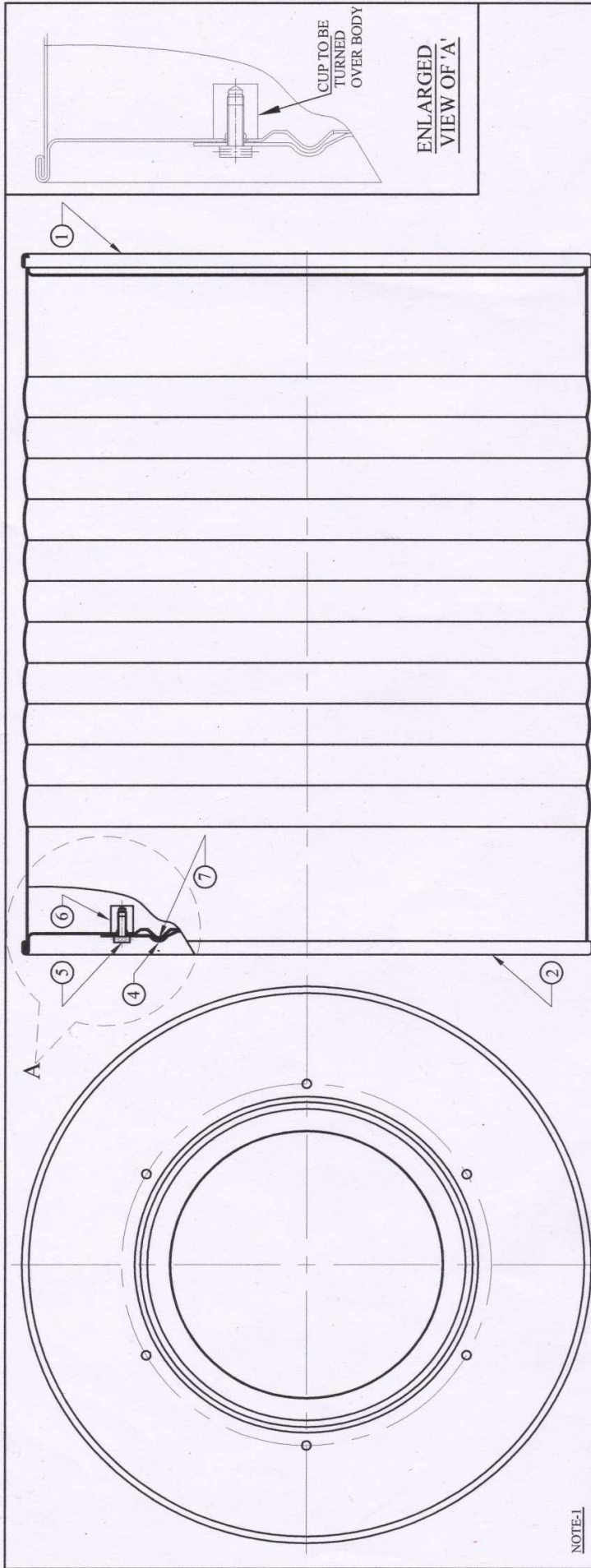
DIMNS IN MM UNLESS OTHERWISE STATED	MATERIAL : AS ABOVE
	TITLE
	GASKET FOR PRB DRUM
	CORDITE FACTORY- ARUVANKADU
SCALE :- 1 : 2	

NOTE-1
MATERIAL:- VULCANISED NATURAL RUBBER
CLASS A TO SPECIFICATION IND/ME/584 (e)

NOTE-2
TOLERANCE SHOULD CONFORM TO SPECIFICATION MEDIUM IS: 2102

NOTE-3
DRG. CONVENTIONS CONFORM TO IS:696

DRAWING DRAWN BASED ON CD SECTION Lr. No. CD 129/PV/Dt. 02.05.2019 & O.F. BHUSAWAL-DRG No. OFB/C/1165



NOTE-1

PROTECTIVE FINISH

TO BE PHOSPHATED TO SPECN: IS 1279 CLASS II AFTER PHOSPHATING TO BE COATED INTERNALLY WITH CLEAR EPOXY RESIN VARNISH OR VARNISH AIR DRYING AMMIN TO SPECN IND/ME/19(C)

2. EXTERNALLY BY A FINISHING COAT OF READY MIXED PAINT QUICK DRYING MATT. GENERAL PURPOSE LIGHT BROWN (ISC 410 TO IS-5) TO SPECN IS:168 (LATEST ISSUE). THE PAINT MUST BE APPLIED EVENLY & EACH COAT MUST BE THOROUGHLY DRY BEFORE THE APPLICATION OF THE NEXT COAT.

NOTE-2

CUPS TO BE INSERTED IN THE HOLES OF THE BODY FROM INSIDE & RIVETED FROM OUTSIDE.

NOTE-3

DRAWING CONVENTIONS CONFORM TO IS:696.

ITEM	DESCRIPTION	QTY.	DESIGNER REF.	PART No.
7	GASKET	1	OFB/C/1165	12 S 014 / 7
6	CUP	6	OFB/C/1164	12 S 014 / 6
5	BOLT	6	OFB/C/1163	12 S 014 / 5
4	LID	1	OFB/C/1162	12 S 014 / 4
3	BODY	1	OFB/C/1161	12 S 014 / 3
2	TOP	1	OFB/C/1544	12 S 014 / 2
1	BOTTOM	1	OFB/C/1543	12 S 014 / 1

USER SIGN :

[Handwritten Signature]
H25/20

DRAWING DRAWN BASED ON CD SECTION Lr. No. CD 129/PV Dt. 02.05.2019 & O.F.BHUSA WAL-DRG No. OFB/C/1160

DRN	SIGN	DATE
CHD	<i>[Handwritten Signature]</i>	24.05.19
APPD	<i>[Handwritten Signature]</i>	04.06.19
AUTHD	<i>[Handwritten Signature]</i>	07.06.19
		08.06.19

DIMNS IN MM UNLESS OTHERWISE STATED	
MATERIAL : AS ABOVE	
TITLE CYLINDER 12 A [FOR AMMUNITION CONTAINER ASSEMBLY 12 A (PRB DRUM)]	
SCALE :- 1 : 4	
DRG.No. 12 S 014	
CORDITE FACTORY-ARUVANKADU	