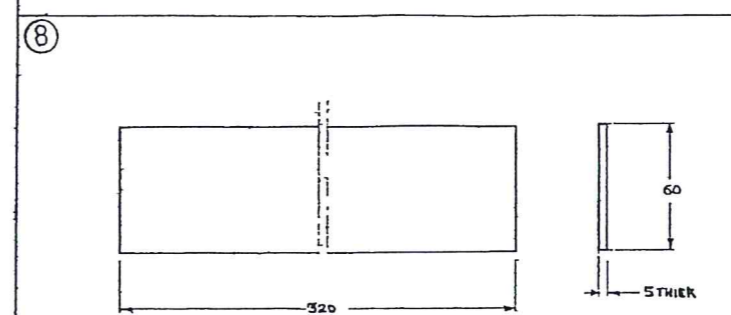
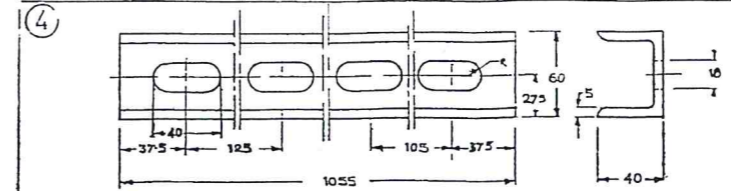
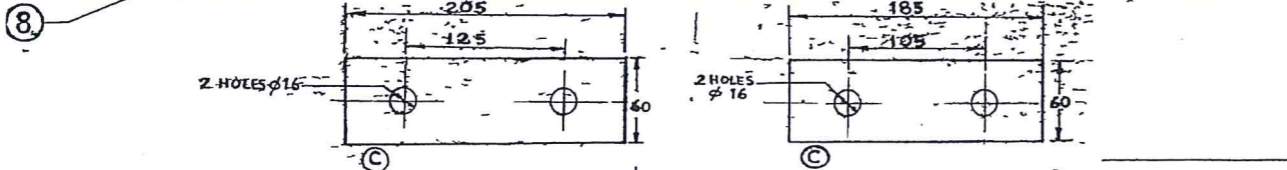
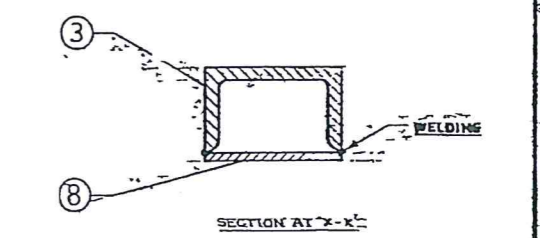
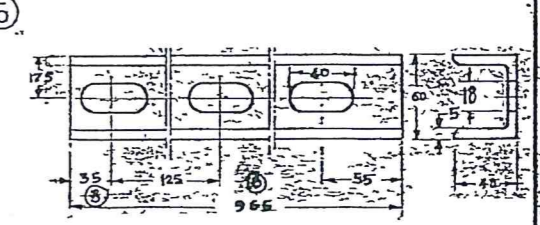


ITEM No	NOMENCLATURE	SIZE (L)	No.OFF
6	SIDE SUPPORTING ANGLE	35x35x4x390	4
7	END SUPPORTING ANGLE	35x35x4x310	4



ITEM No	NOMENCLATURE	No.OFF
1	BOTTOM CHANNEL	2
2	SUPPORTING SIDE CHANNEL	2
3	STANDING CHANNEL	4
4	UPPER CHANNEL	4
5	UPPER CHANNEL	4
6	SUPPORTING SIDE ANGLE	4
7	SUPPORTING END ANGLE	4
8	PLATE BLOCK	4
9,10,11,12	PLATE	1 EACH
13	RUBBER PLATE	2
14	RUBBER PLATE	2



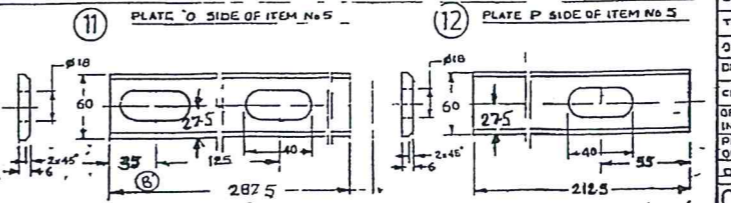
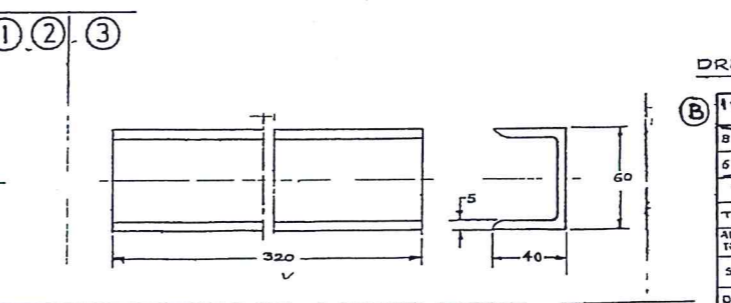
DETAILS OF ITEM 13 SCALE NTS

DETAILS OF ITEM 14

MATERIAL - RUBBER FABRIC PLATE
 PTH TY 105-1042-76
 (FOR ITEM 13 & 14)

- NOTE -
- ALL DIMENSIONS ARE IN MILLIMETRES
 - THIS IS AN UNSEALED DRG PRODUCTION HAS NOT BEEN CARRIED OUT TO THIS DRG
 - PROTOTYPE SAMPLE SHOULD BE GOT APPROVED FROM COASY BEFORE START OF BULK PRODUCTION
 - X X INDICATE WELDING
 - SLOTS ON ITEM Nos 9,10,11 & 12 SHALL BE MARKED TO SUIT THE SLOTS OF ITEM Nos 4 & 5
 - ITEM No 9 & 10 SHALL BE WELDED WITH ITEM No 4 AND ITEM No 11 & 12 WITH ITEM No 5 BEFORE WELDING ITEMS 4 & 5 WITH ITEM No 3 AS SHOWN IN DRG
 - ITEM No 13 AND 14 ARE TO BE KEPT SEPARATELY AND USED WHEN MOUNTING ENGINE ON THE CHANNELS OF THE CRADLE ASSY

ITEM No	NOMENCLATURE	SIZE (L)	No.OFF
1	BOTTOM CHANNEL	75 x 40 x 1560	2
2	SUPPORTING SIDE CHANNEL	75 x 40 x 730	2



DRAWING NOT TO SCALE

1 to 12	STRUCTURAL STEEL Fc 410W A	15 2062-84	6.6.98	AUTHY LC No: EFA/PROJ 023/DE 6.4.98
13 to 14	STRUCTURAL STEEL Fc 410S-PTS 226-75	15 2062-84	6.6.98	AUTHY LC No: EFA/PROJ 023/DE 6.4.98
15 to 16	CARBON STEEL ANGLE TO IS 808-64	15 2062-84	6.6.98	AUTHY LC No: EFA/PROJ 023/DE 6.4.98
17 to 18	CARBON STEEL COMMERCIAL QUALITY	15 2062-84	6.6.98	AUTHY LC No: EFA/PROJ 023/DE 6.4.98

SCALE 1:1

THIRD ANGLE PROJECTION

ORIGINAL DATE - 23.4.91

DRN - [Signature]

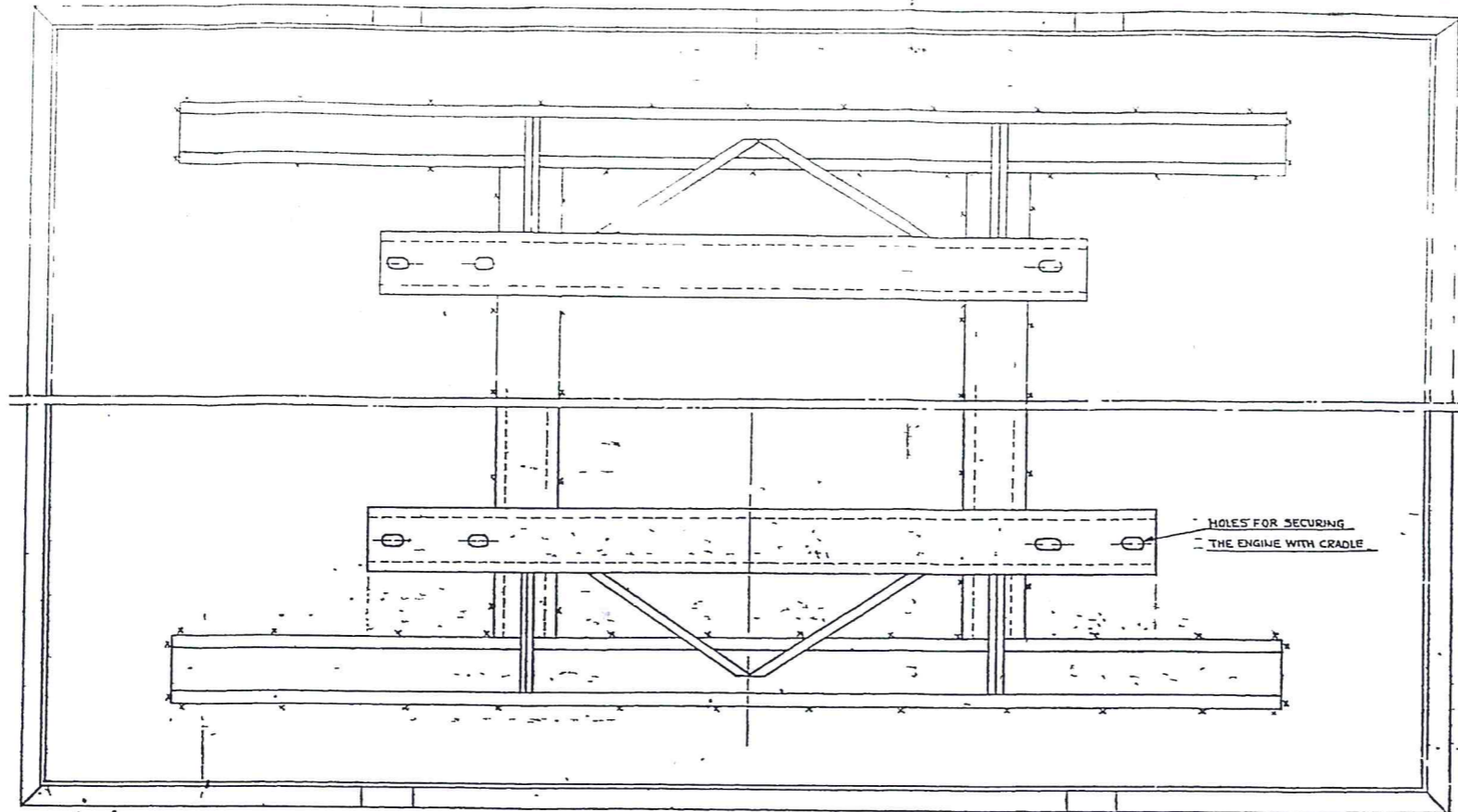
CHD - [Signature]

OFFICER INCHARGE + [Signature]

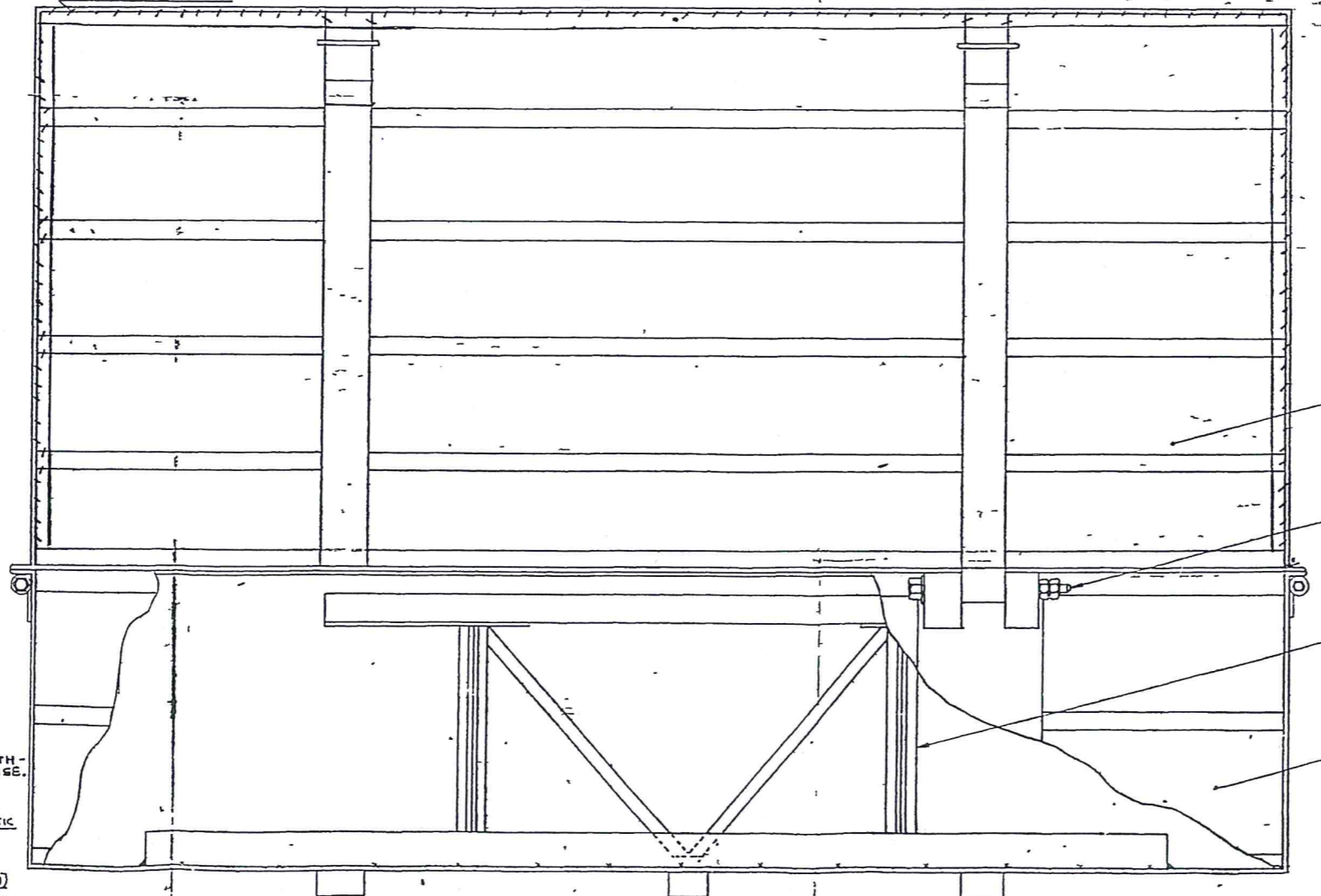
PROJECT OFFICER - [Signature]

CONTROLLERATE OF QUALITY ASSURANCE (S.V.)

SK 0708



TO BE DELETED PLAIN VIEW WITHOUT ITEM No 3



- NOTE:-**
- 1 ALL DIMENSIONS ARE IN MILLIMETRES
 - 2 THIS IS AN UNSEALED DRG PRODUCTION HAS NOT BEEN CARRIED OUT TO THIS DRG
 - 3 PROTOTYPE SAMPLE SHOULD BE GOT APPROVED FROM CQASY BEFORE START OF BULK PRODUCTION
 - 4 X X & INDICATE WELDING
 - 5 CRADLE (ITEM No 2) SHALL BE WELDING WITH LOWER CASE ASSY (ITEM No 1) EXACTLY AT CENTRE LENGTH-WISE AS WELL AS WIDTH WISE.
 - 6 INSIDE AND OUTSIDE SURFACES OF ASSY CASE AND CRADLE SHALL BE PAINTED AS PER IND/VEH/1001 USING ONE COAT OF PAINT REF. PRK-16 RED OXIDE OF IRON ZINC CHROMATE SYNTHETIC TO JSS-3-47 AND TWO COAT OF PAINT REF. FINISHING VAR EQUIPMENT OLIVE GREEN TO JSS-8010-14
 - 7 A POLYTHENE BAG (1700 LENGTH) x (1000 WIDTH) x (100 HEIGHT) SHALL BE SUPPLIED ALONG WITH CASE AND CRADLE ASSY FOR PRESERVATION OF THE ENGINE THICKNESS 2mm (0.1 RESISTANT)

SL No	DRG No.	NOMENCLATURE	QTY	REMARKS
1	SK 0706	LOWER CASE ASSY	1	
2	SK 0709	CRADLE ASSY	1	
3	SK 0707	UPPER CASE ASSY	1	
4	ND	BOLT M 18 X 2 - 6g X 200 (IS:4218 PART II-76) BRIGHT BAR GDE 4 (TYPE 'O') COLD DRAWN IS:9550 - 80.	6	ZINC COATED PASSIVATED
5	ND	NUT M 18 X 2 - 6 H (IS:4218 PART II-76) MTL BRIGHT BAR GDE 4 (TYPE 'O') COLD DRAWN IS:9550 - 80	12	"
6	ND	PUNCHED WASHER A - 20 - IS: 2016 - 67 (STEEL) MTL STEEL SHEET GDE 'O' (1/2 HARD) to IS: 513 - 86	12	"
7	ND	BOLT M 12 X 1.75 - 8g X 210 MTL BRIGHT BAR GDE 4 (TYPE 'O') COLD DRAWN IS: 9550 - 80	4	"
8	ND	NUT M 12 X 1.75 - 7 H MTL BRIGHT BAR GDE 4 (TYPE 'O')	4	"
9	ND	PUNCHED WASHER A - 14 IS: 2016 - 67 (STEEL) MTL STEEL SHEET GDE 'O' (1/2 HARD to IS: 513 - 86	8	"

NOTES:-

8. INDICATION MARK TO BE DRAWN TO INDICATE TOP POSITION.

9. INDICATION MARK TO BE DRAWN TO INDICATE LIFTING POSITION NEAR HOOKS.

DRAWING NOT TO SCALE

C	23-12-96	AUTHY G.P. LT. 43281/PP-1/06	Dr 19/16. Oct. 96
B	18-4-96	AUTHY LT. HQ 30253/AHSP/ENG	SPC Dr 17-4-96
A	23-4-91	R-3602	REVISED BY RETRACED

ISSUE	DATE	AUTHY	AMENDMENTS
1			

ALL SHARP EDGES & CORNERS TO BE ROUNDED OFF	ALL THREADS TO CONFORM TO SPECIFICATION IS: 4218-76	STAMP OR ETCH PART No. NUMBER & NAME & YEAR OF MANUFACTURE
SCALE - 1:5	TOLERANCE ON DIMENSIONS UNLESS OTHERWISE SPECIFIED	PERTAINS TO: FOR ENGINES T55 (V55), T72 (V46-6), T-90 (V9252)
DRG. NOT TO BE SCALED	LINEAR	ANGULAR
THIRD ANGLE PROJECTION	ASSY. CASE & CRADLE FOR V46-6 & V9252 / ENGINES	
ORIGINAL DATE: 23-4-91	CQASY DRG No. SK-0708	
DRN: [Signature]	OFFICER INCHARGE: [Signature]	
CHD: [Signature]	PROJECT OFFICER: [Signature]	
FOR DCQA: [Signature]	CONTROL RATE OF QUALITY ASSURANCE (S.M.)	