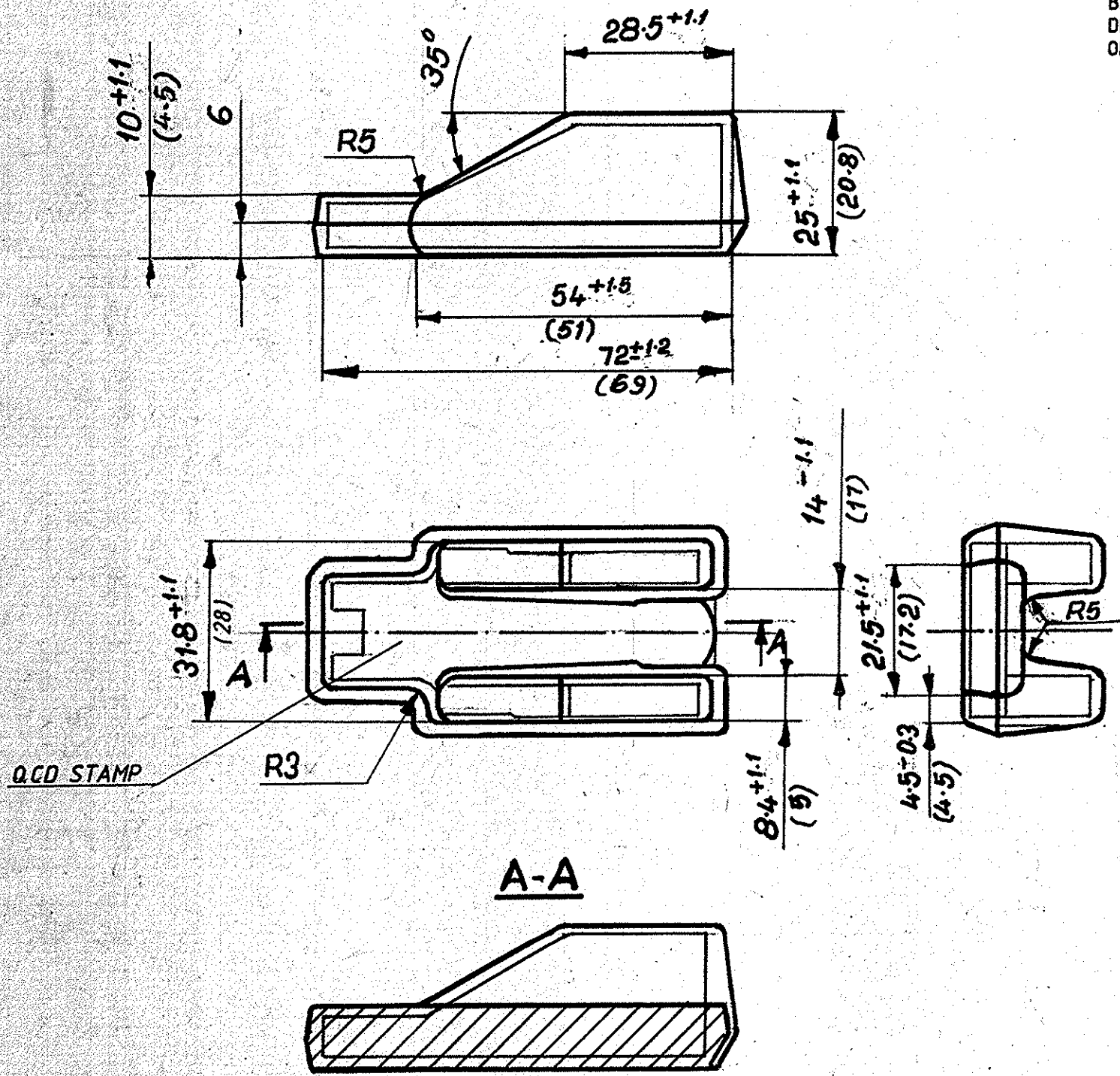


MATERIAL FOR INDIA:-  
 BS 970 PT.1-1983 GR.826 M-31 OR IS:5517-78 ✓  
 DESIG. 31 Ni.10 Cr.3 Mo.6 WITH RESTRICTION  
 OF 'S' & 'P' CONTENT UPTO 0.025% MAX. FOR EACH.

**CHEMICAL COMPOSITION  
 AND MECHANICAL PROPERTIES  
 OF MATERIAL**

30XH2MΦA	
C	0.27 - 0.34
Si	0.17 - 0.37
Mn	0.30 - 0.60
Cr	0.60 - 0.90
Ni	2.00 - 2.40
Mo	0.20 - 0.30
V	0.10 - 0.18
S	0.025 MAX
P	0.025 MAX
Cu	0.20 MAX
HARDNESS	HB269
ELONGATION	10%
REDUCTION IN AREA	40%
IMPACT STRENGTH	9 Kgf m/c M <sup>2</sup>
TENSILE STRENGTH	90Kgf/mm <sup>2</sup>
YIELD POINT	80Kgf/mm <sup>2</sup>



**NOTES:-**

1. DIMENSIONS ARE IN mm.
2. FIRST ANGLE PROJECTION.
3. SCALE :- 1:1
4. FORGING OF GROUP II AS PER GOST 8479-70, HB 269MAX.
5. DRAFT ANGLE 7°.
6. UN-SPECIFIED RADII 1.5R.
7. FLASH REMAINDER UP TO 0.6mm.
8. WARPING UP TO 0.6 mm.
9. DIE SHIFTING UP TO 0.4mm.
10. CONVENTIONAL CONTOUR AND DIMENSIONS GIVEN IN BRACKETS PERTAIN TO THE FINISHED PART.
11. STAMP PART NO, MELT NO. AND Q.C.D STAMP ON THE TAG.
12. 5% OF A BATCH SHOULD BE CHECKED FOR HARDNESS AS PER GOST 8479-70.
13. WEIGHT OF THE FORGING :0.270 Kgs.

HEAT-TREATMENT:-FORGINGS ARE NORMALIZED AND TEMPERED.  
 FOR HEAT-TREATMENT SCHEDULE REFER DRAWING  
 NO: M.881 SHEET NO: 1 TO 3 AND SHEET NO: 5 SL.NO: 14.

**COMPONENT DRG. NO. 6P11-3-21  
 PLATE PUSHING CARTRIDGE CASE**

MATERIAL-STEEL 30XH2MΦA OST 3-98-80 ✓

ALT. MATERIAL :  
 STEEL 30 X H2 M Φ A GOST 4543 - 71 ✓

DS-CAT NO.  
 1005007302

**DRAWING PROVISIONAL**

VETTED FOR MATERIAL ONLY

*[Signature]*  
 Principal Scientific Officer,  
 Quality Assurance Officer,  
 For Senior Quality Assurance Officer,  
 Senior Quality Assurance Engineer,  
 Tiruchirappalli - 620

B	MATERIAL FOR INDIA ADDED	<i>[Signature]</i> 21/12/89
AMEND- MENTS	DESCRIPTION / DETAILS	SIG. & DATE

<i>[Signature]</i> 20/10/97	<i>[Signature]</i> 11.8%	<i>[Signature]</i> 7.11.88	<i>[Signature]</i>	ORDNANCE FACTORY, TIRUCHIRAPALLI-16.	DRG. NO: 62 C 3021 200 B 3
REDRAWN	CHECKED	APPROVED	DIV. OFFICER		

29-01-28-17-89