

INDEX

PACKING - EACH SAMPLE SHALL BE WRAPPED IN TISSUE PAPER AND 50 Nos. THUS WRAPPED BE PACKED IN A SUITABLE CARTON. 10 SUCH CARTONS SHALL BE PACKED IN A C.W.P (DULY LINED WITH PAPER PACKING WATER-PROOF). EACH CARTON SHALL BE MARKED WITH THE DETAILS OF THE MANUFACTURER. BEFORE DESPATCH EACH PACKING CASE SHALL BE LEGIBLY AND INDELIBLY MARKED

WITH THE FOLLOWING DETAILS:-

- (i) NOMENCLATURE, CAT No. OF THE STORE AND THE YEAR OF MANUFACTURE.
- (ii) TOTAL No. OF PACKING CASES AND THE NUMBER OF THE INDIVIDUAL PACKING CASE IN A CONSIGNMENT.
- (iii) No. OF CARTONS IN EACH PACKING CASE AND THE QUANTITY IN EACH CARTON.
- (iv) MASS OF THE PACKING CASE IN KG.
- (v) ADDRESS OF THE CONSIGNEE.
- (vi) ADDRESS OF THE CONSIGNOR.

DETAIL No	SHEET No	NOMENCLATURE	No. OFF
	1	INDEX, PACKING CLAUSE	1
	2	ASSEMBLY	
	3	BODY	
2	4	BAR	
3	5	SPRING	
4	6	WASHER	
5	7	CLIP	
6	8	SCREW	2

Handwritten: A-22/12/10

COUNTERSIGNED	DATE	NAME
WITN		
TRD	22-12-10	<i>[Signature]</i>
TRD		
COMP		
AD/DO		
PRO. OFF		

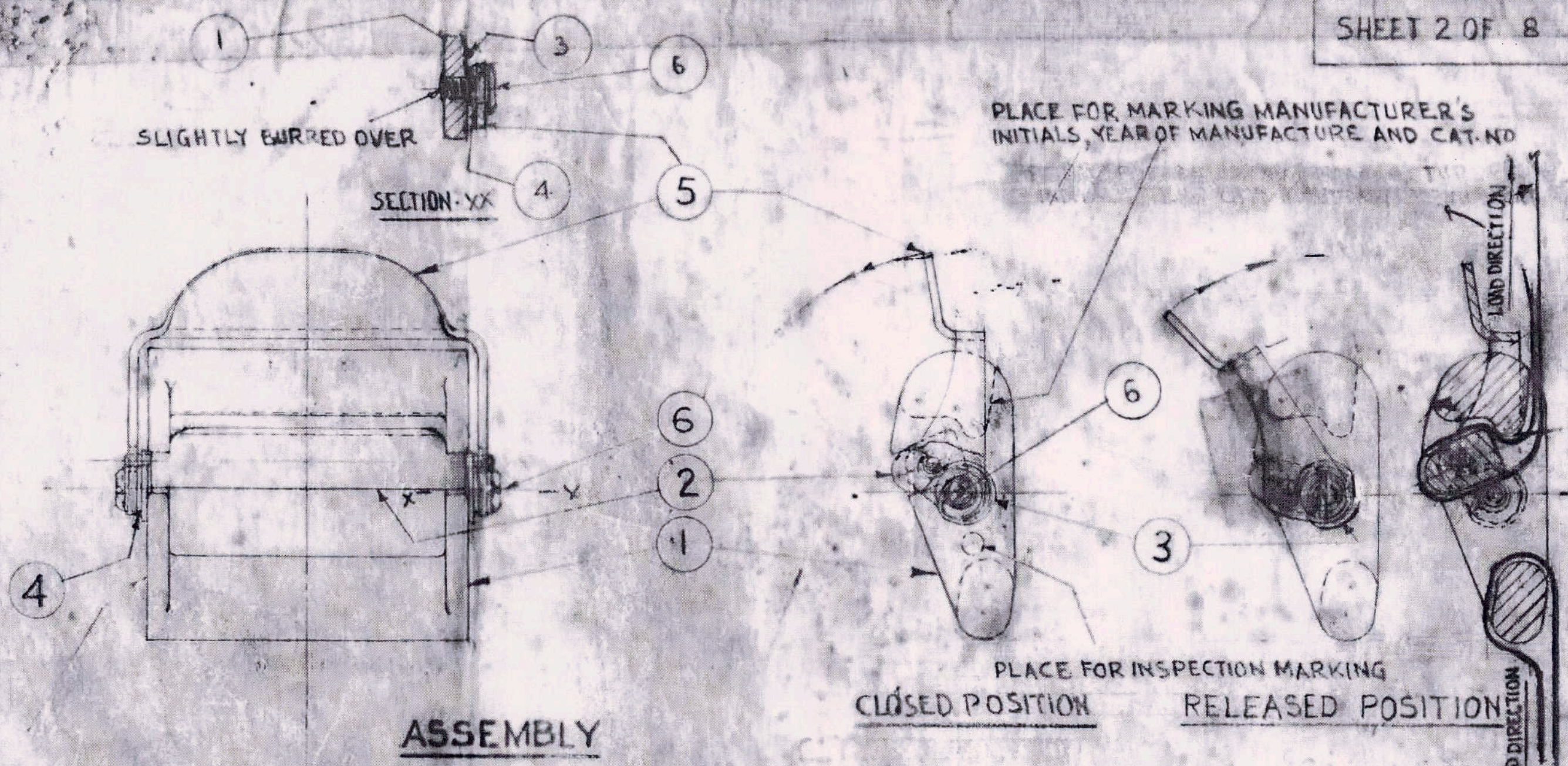
off: **DIRECTOR**
ADR DE AGRA

PARACHUTE SEAT VIK 10
(QUICK ADJUSTABLE BUCKLE)

APPROVED
[Signature]
DY. DIR (DR)

PROV (e) (f)
DRG.No. ADRDE/205(a)(b)(c)(d)

DO/76/74



PROOF LOAD :- 4900N (500Kg.)

ASSEMBLY

COUNTERSIGNED	DATE	NAME
	DGN	
	DRN	
	CHD	
	TRD	
	COMP.	
	AD/DO	
PROFFER		
SCALE: 1:1		

WG. CDR.
DIRECTOR
ADRDE., AGRA

**PARACHUTE SEAT MK-10
(QUICK ADJUSTABLE BUCKLE)**

DIRECTION OF LOADING (PER. OF LOAD)	
THIRD-ANGLE PROJECTION	
APPROVED	
DY. DIR (DEV)	
PROV.	(e)(f)
DRG.No. ADRDE/205(a)(b)(c)(d)	

DO/76/74

e 19.9.18	QMS/PG/PAS/224	AMENDED AS PER CHANGE SHEET No.147
R. DATE	AUTHORITY	BRIEF RECORD

MATERIAL-

△ ALLUMINIUM ALLOY
IS:737-1986 HE 15 (24345)
WP CONDITION

MATERIAL:-

ALUMINIUM ALLOY TO SPECN.
IS:734-1987, HF-12 IN-12
'WP' CONDITION

HARDNESS:-

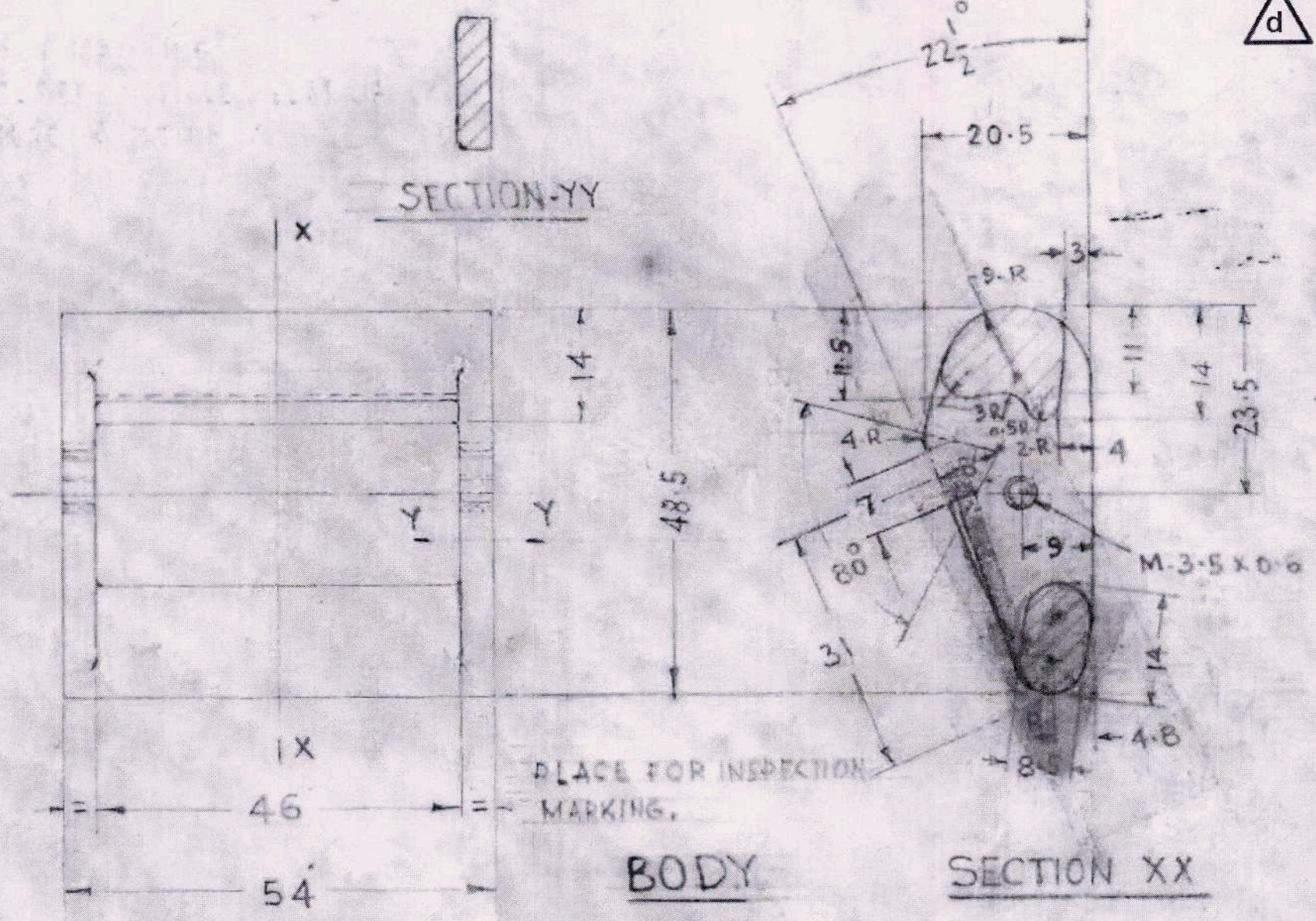
~~160 VPN~~ 160-176 VPN

WORKMANSHIP AND FINISH:-

TO BE SMOOTHLY FINISHED AND ANODISED TO A MINIMUM THICKNESS OF 0.015 mm. AS PER SPECN 1868-1961 GRADE 'B' IN BLACK SHADE OR SPRAY ANAMELED WITH HIGH QUALITY BLACK PAINT GIVING HIGH GRADE STICKINESS.

TOLERANCES:-

±.4 mm. UNLESS OTHERWISE SPECIFIED.



BODY
1-OFF

SECTION XX

COUNTERSIGNED 18/11/74 WG. CDR. DIR. DRDE, AGRA	DATE	NAME
	DGN	
	DRN	QK/ho
	CHD	
	TRD	
COMP		
AD/DO		
PRO.OFFR		
SCALE :- 1:1		

PARACHUTE SEAT MK-10
(QUICK ADJUSTABLE BUCKLE)

THIRD-ANGLE PROJECTION
DIMENSIONS IN MILLIMETRES
APPROVED
(D) DIR (DEV)
PROV. (a)(b)(f)
DRG.No. ADRDE/205 (a)(b)(c)

2

△ (a) BAR-ALUMINIUM ALLOY IS:737-1986 HE 15 (24345) WP CONDITION

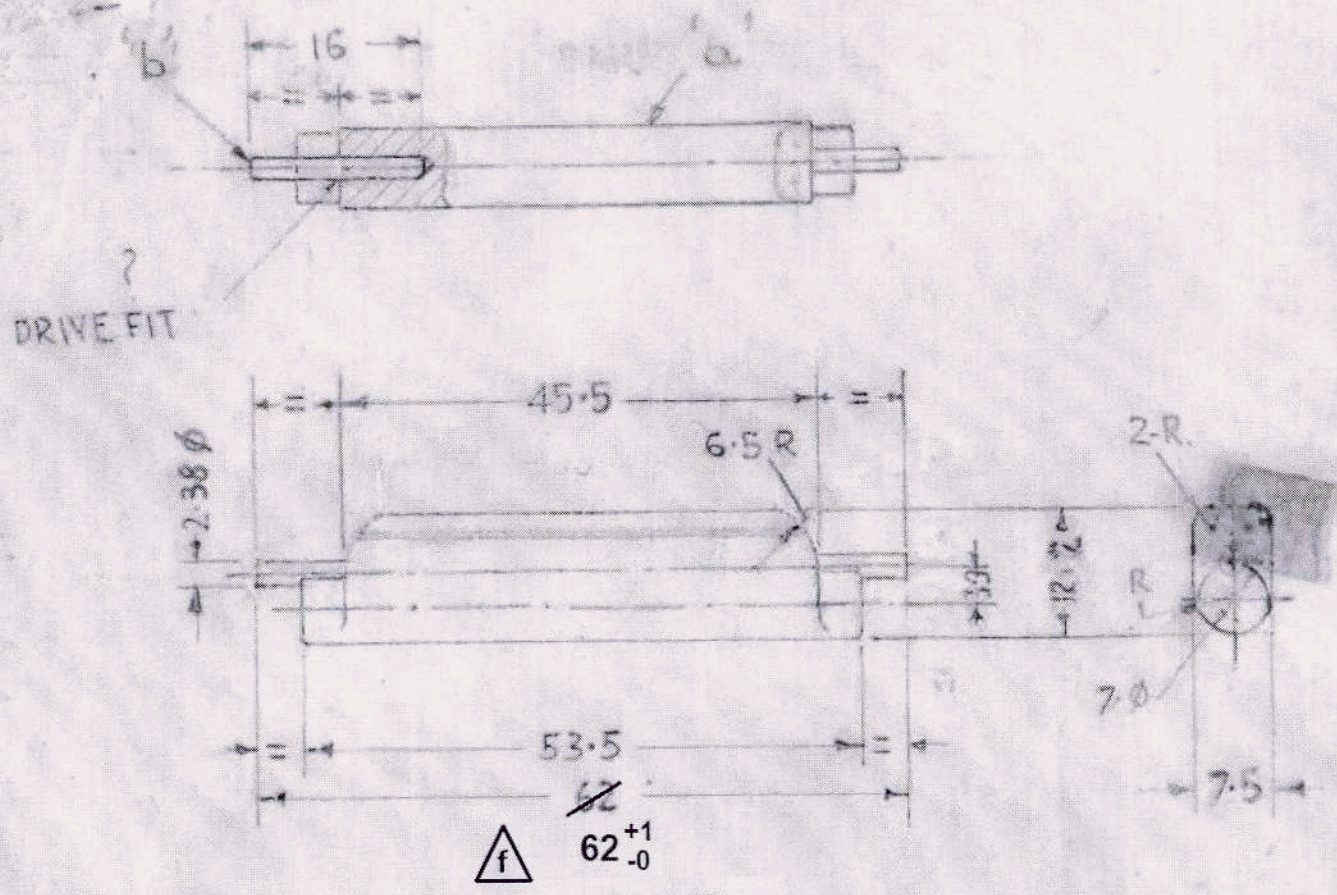
MATERIAL: (a) BAR - ALUMINIUM ALLOY TO SPECN. IS:734-1967, HE-12 IN WP CONDITION.

(b) PIN - SPRING STEEL WIRE TO SPECN. BS:1408-C -1964

HARDNESS: △ BAR-160-176 VPN.

WORKMANSHIP AND FINISH: (a) BAR - TO BE SMOOTHLY FINISHED AND ANODISED TO A MINIMUM THICKNESS OF 0.015 mm AS PER SPECN. IS:1868-1961 GRADE 'B' IN BLACK SHADE OR SPRAY ENAMELED WITH HIGH QUALITY BLACK PAINT GIVING HIGH GRADE STICKINESS. (b) PIN: - TO BE FINISHED SMOOTH AND CADMIUM PLATED TO A MIN. THICKNESS OF 0.012 mm AND CHROMATE PASSIVATED AS PER SPECN. IS:1572-1968, col-12.

TOLERANCES: - ±.4 mm UNLESS OTHERWISE SPECIFIED



BAR
1-OFF

Rev.No.	DATE	ZONE	AUTHORITY	BRIEF RECORD
f	21-6-21	—	QMS/PG/PAS/258&245	AMENDED AS PER CHANGE SHEET No. 301
e	19-9-18	—	QMS/PG/PAS/224	AMENDED AS PER CHANGE SHEET No.147

COUNTERSIGNED	DATE	NAME
DGN		
DRN		SP Smt
CHD	22/9/74	
TRD		
COMP		
AD/D.O		
PRO OFFR.		

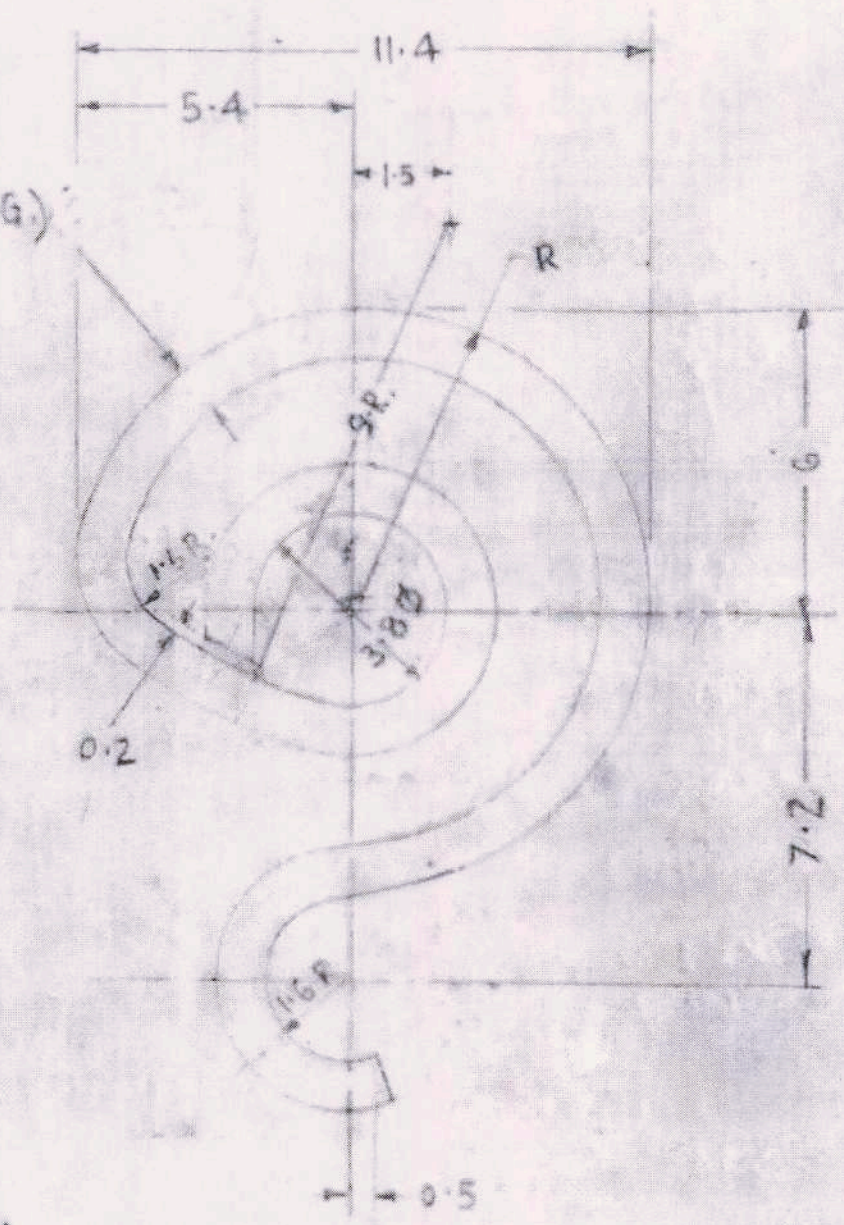
SCALE: -1:1

PARACHUTE SEAT MK-10

(QUICK ADJUSTABLE BUCKLE)

THIRD-ANGLE PROJECTION.
DIMENSIONS IN MILLIMETRES.
APPROVED.
BY DIR (DEV)
PROV. (e)(f)
DRG.No. ADRDE/205(a)(b)(c)(d)

0.914 (20 SWG)



MATERIAL:-

3

SPRING STEEL WIRE TO SPECN.
BS:1408 C-1964

WORKMANSHIP AND FINISH:-

TO BE SMOOTHLY FINISHED AND
CADMIUM PLATED TO A MINIMUM
THICKNESS OF 0.012 mm AND
CHROMATE PASSIVATED AS PER
SPECN: IS:1572-1968, cd-12

EMBRITTEMENT RELEASE:- SPRINGS

AFTER CADMIUM PLATING AND
PRIOR TO CHROMATE PASSIVATION
SHALL BE MAINTAINED AT A TEMP.
OF 150°-200°C FOR HALF AN HOUR
TO REMOVE HYDROGEN EMBRITTEMENT.

TOLERANCES:-

± 0.4 mm UNLESS OTHERWISE
SPECIFIED.

SPRING
2-OFF

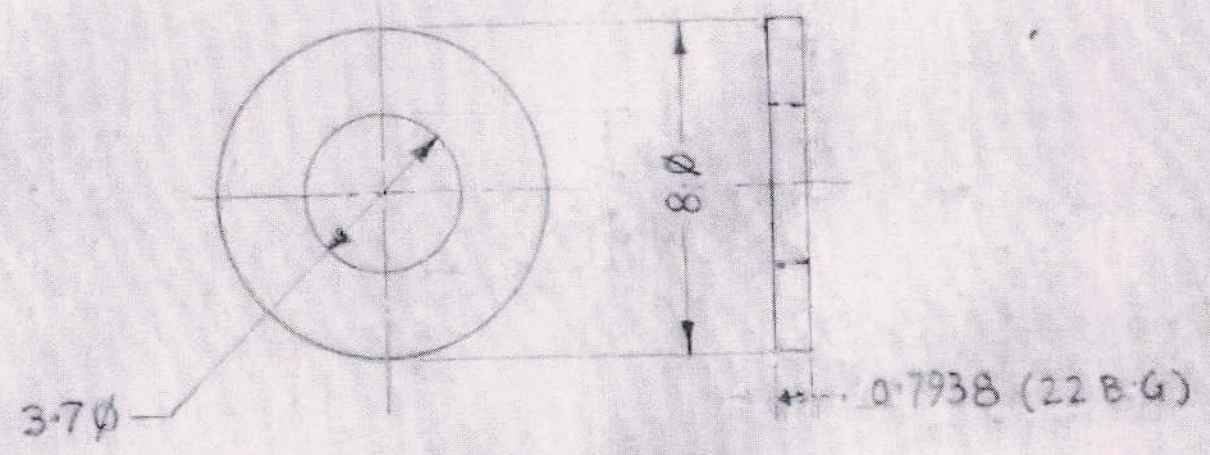
COUNTERSIGNED	DATE	NAME
DGN		
DRN		<i>R. H. Ghe</i>
CHD	22.2.74	
TRD		
COMP		
AD/DO		
PRO.OFFR		
SCALE :- 5:1		

PARACHUTE SEAT MK-10
(QUICK ADJUSTABLE BUCKLE)

DIMENSIONS IN MILLIMETRES
APPROVED
et al
DY.DIR.(DEV)

PROV. (e)(f)
DRG.No.ADRDE/205(a)(b)(c)(d)

4



MATERIAL :-

MILD STEEL SHEET TO IS:- 226-1969

WORKMANSHIP AND FINISH:-

TO BE FINISHED SMOOTH AND
 CADMIUM PLATED TO A MINIMUM THICKNESS
 OF 0.12 mm. AND CHROMATE PASSIVATED
 AS PER SPECN IS: 1572-1968, cd-12

TOLERANCES:-

± 0.4mm UNLESS OTHERWISE SPECIFIED.

WASHER

2-OFF

PARACHUTE SEAT MK 10
 (QUICK ADJUSTABLE BUCKLE)

COUNTERSIGNED

[Signature]
 18/11/74
 OFFS. DIRECTOR
 ADR DE, AGRA

DATE	NAME
	DGN
	DRN SP SINGH
	CHD <i>[initials]</i>
	TRD
	COMP
	AD/D.O.
	PRO.OFFR.

SCALE:- 4:1

THIRD-ANGLE PROJECTION.

DIMENSIONS IN MILLIMETRES.

APPROVED.

[Signature]
 DY.DIR.(DEV)

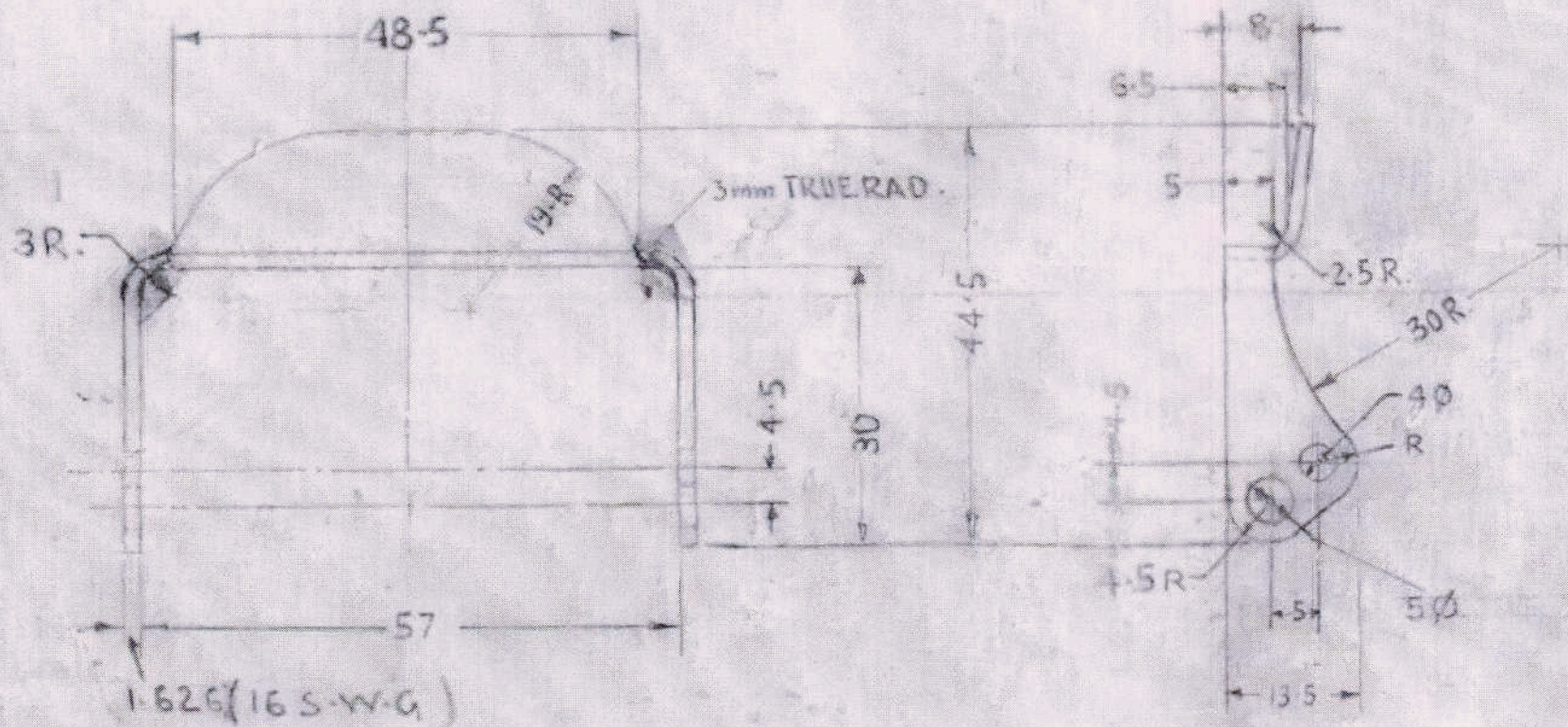
PROV. (e)(f)

DRG.No.ADRDE/205(a)(b)(c)(d)

DO/76/74

5

Rev.No.	DATE	ZONE	AUTHORIT	BRIEF RECORD
e	19-9-18	—	QMS/PG/PAS/224	AMENDED AS PER CHANGE SHEET No.147



MATERIAL:-

ALUMINIUM ALLOY TO SPECN. IS: 3436-1966

HARDNESS:-

88-98 VPN ^{△e}

WORKMANSHIP AND FINISH:-

TO BE SMOOTHLY FINISHED AND ANODISED TO A MINIMUM THICKNESS OF 0.015mm AS PER SPECN. IS: 1868-1961, GRADE 'B' IN BLACK SHADE OR SPRAY ENAMELED WITH HIGH GRADE QUALITY BLACK PAINT GIVING HIGH GRADE STICKINESS.

TOLERANCES:-

±.4mm UNLESS OTHERWISE SPECIFIED.

CLIP
1-OFF

COUNTERSIGNED

[Signature]
WG-CDR
OFFS. DIRECTOR,
ADRDE, AGRA

DGN.	DATE	NAME
DRN.		SP SINGH
CHD		<i>[Signature]</i>
TRD		
COMP		
AD/D.O		
PRO-DFFR.		

SCALE:- 1:1

PARACHUTE SEAT MK-10
(QUICK ADJUSTABLE BUCKLE)

THIRD-ANGLE PROJECTION,

DIMENSIONS IN MILLIMETRES.

APPROVED,

[Signature]
DY DIR. (DEV)

PROV.

(e)(f)

DRG.No.ADRDE/205(a)(b)(c)(d)

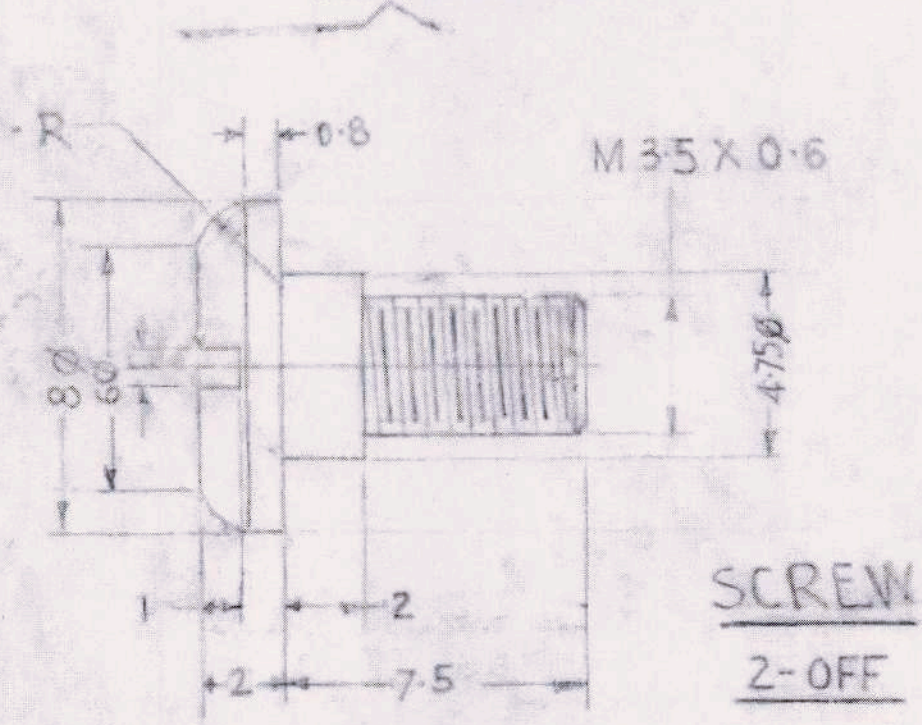
D0/76/74

6

NOTE :- (i) AFTER ASSEMBLING THE SCREWS WITH BODY, THE SCREWS HAVE TO BE PUNCH LOCKED BY MANUFACTURER.



(ii) DURING ACCEPTANCE TESTING, SCREWS HAVE TO BE CHECKED FOR TORQUE LEVEL OF 12 lbs-inch. SCREWS SHALL NOT OPEN AT ABOVE TORQUE LEVEL.



MATERIAL :-

MILD STEEL TO SPECN. IS: 226-1969.

WORKMANSHIP AND FINISH :-

TO BE FINISHED SMOOTH AND CADMIUM CADMIUM PLATED TO A MINIMUM THICKNESS OF .012 mm AND CHROMATE PASSIVATED AS PER SPECN. IS: 1572-1968, cd-12.

TOLERANCES :-

± .4 mm UNLESS OTHERWISE SPECIFIED.

f	21-06-21	—	QMS/PG/PAS/258 & 245	AMENDED AS PER CHANGE SHEET No. 301
Rev. No.	DATE	ZONE	AUTHORITY	BRIEF RECORD

COUNTERSIGNED	DATE	NAME
DGN		
DRN		SP SINGH
CHD		② 2
TRD		
COMP.		
AD/D.O.		
PRO.OFFR.		

18/11/74
WG-COR.
OHS DIRECTOR
ADRDE, AGRA.

SCALE: 4:1

PARACHUTE SEAT MK-10
(QUICK ADJUSTABLE BUCKLE)

DIMENSIONS IN MILLIMETRES.
APPROVED.
BY DIR (DEV)
PROV. (e) (f)
DRG.No. ADRDE/205(a)(b)(c)(d)