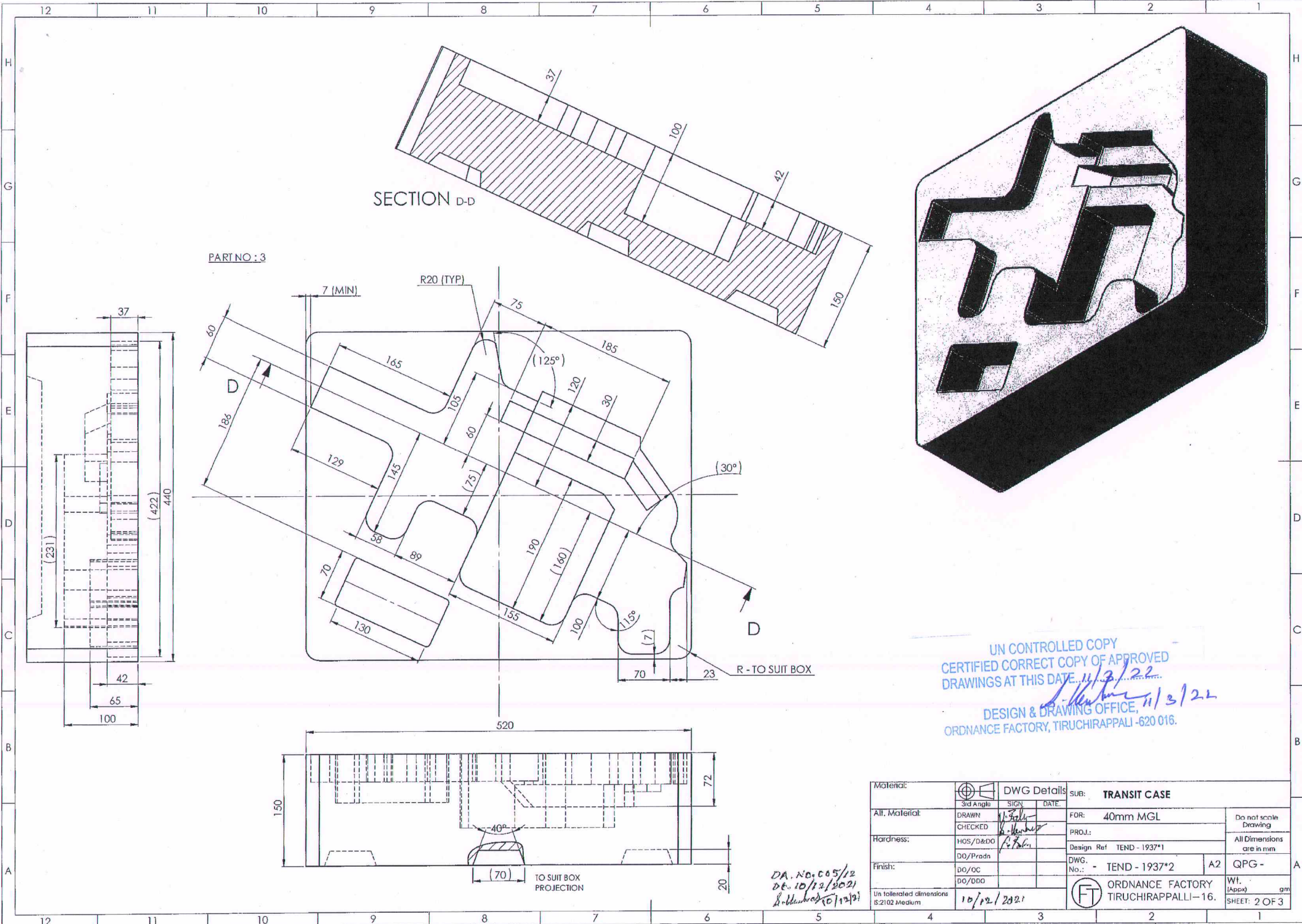


SL.NO	NOMENCLATURE	MATERIAL	QTY / BOX
1	MOULDED BOX BASE	LLDPE	1
2	MOULDED BOX LID	LLDPE	1
3	CUSHION	XLPE	1
4	LEFT SIDE SUPPORT CUSHION	XLPE	1
5	HINGES	STEEL	3
6	GASKET $\varnothing 10\text{mm}$	N.RUBBER	1
7	RIGHT SIDE SUPPORT CUSHION	XLPE	1
8	TWIST LATCH	STEEL	4
9	HANDLE	STEEL	3
10	LATCH PAD LOCK	STEEL	1
11	WIRE ROPE	STEEL	2
12	CUSHION PAD LID 10mm THICK	XLPE	1

UN CONTROLLED COPY
 CERTIFIED CORRECT COPY OF ALL
 DRAWINGS AT THIS DATE. 11/3/22
 DESIGN & DRAWING OFFICE, 11/3/22
 ORDNANCE FACTORY, TIRUCHIRAPPALI-620 016.

Material:	DWG Details	SUB: TRANSIT CASE
Alt. Material:	3rd Angle DRAWN CHECKED	FOR: 40mm MGL
Hardness:	HOS/D&DO DO/Prdn DO/QC DO/DDO	PROJ.: Design Ref TEND - 1937*1 DWG. No.: TEND - 1937*2
Finish:	Un fabricated dimensions IS:2102 Medium	Do not scale Drawing All Dimensions are in mm A2 QPG - WI. (Appx) gm SHEET: 1 OF 3

DA No. 203/21
 dt. 10/12/2021
 S. Sankar



UN CONTROLLED COPY
 CERTIFIED CORRECT COPY OF APPROVED
 DRAWINGS AT THIS DATE 11/3/22
[Signature]
 DESIGN & DRAWING OFFICE, 11/3/22
 ORDNANCE FACTORY, TIRUCHIRAPPALLI - 620 016.

Material:		DWG Details	SUB: TRANSIT CASE
All. Material:	DRAWN <i>[Signature]</i> CHECKED <i>[Signature]</i>	SIGN DATE	FOR: 40mm MGL
Hardness:	HOS/D&DO <i>[Signature]</i> DO/Prdn		PROJ.: Design Ref TEND - 1937*1
Finish:	DO/OC DO/DDO		DWG. No.: - TEND - 1937*2 A2 QPG -
Un tolerated dimensions 5.2:102 Medium	10/12/2021		ORDNANCE FACTORY TIRUCHIRAPPALLI - 16. WT. (Appx) gm SHEET: 2 OF 3

DA. No. 005/12
 Dt. 10/12/2021
[Signature]

MATERIAL:

- LLDPE - REF. LL 36RA045 UV
- XLPE - REF. ASTM C177, D 2240 & JIS K 6767 LLDPE - REF. LL 36RA045 UV
- PU FOAM - GENERAL PURPOSE
- NATURAL RUBBER FOR SEALING PURPOSE

QUALITY TEST REPORT COMBINING AS PER JSS 0253-01, MIL-STD-81 OF ASTM D4169

SL. No.	TEST NAME	TEST SPECIFICATION
1	WATER SPRAY TEST K-JSS 0253-01	WATER SPRAYED AT A PRESSURE OF 2.5Kg/Cm SQUARE FOR ALL THE FOUR TOP CORNERS AT AN ANGLE OF 45° FROM A DISTANCE OF 2.5m. DURATION 5 MIN.
2	VIBRATION TEST J-JSS 0253-01	THE CASE IS SUBJECTED TO THE FOLLOWING VIBRATION FREQUENCY RANGE: 5 TO 50 CYC/SEC. DISPLACEMENT 0 TO 12.7mm.
3	DRY HEAT TEST C-JSS 0253-01	THE CASE EXPOSED TO A TEMPERATURE OF 75°C ±2°C WITH RELATIVE HUMIDITY OF 40% FOR 48 HOURS.
4	LOW TEMPERATURE TEST G-JSS 0253-01	THE CASE EXPOSED TO A TEMPERATURE OF -20°C ±5°C WITH RELATIVE HUMIDITY OF 65% FOR 8 HOURS.
5	BUMP TEST A JSS 0253-01	200 BUMPS AT 2 TO 4 BUMPS/ SEC.
6	DROP TEST MIL-STD-81 OF ASTM D4169	1-10 DROPS FROM A HEIGHT OF 140cm ON ANY FACE, EDGE & CORNER SIDE OF THE CASSE. DROPPING HEIGHT DEPENDING UPON THE PAY LOAD.
7	LIFTING TEST F-JSS 0253-01	LOAD THE CONTAINER TO THREE TIMES OF THE GROSS PACKAGING WEIGHT MAINTAINING C.G & ALLOW THE CONTAINER TO HANG FREELY FOR A PERIOD OF FIVE MIN. FROM THE HANDLE.
8	STATIC LOAD TEST H - JSS 0253-01	THE PACKAGE BASE SHALL STAND ON HARD SURFACE BASE. THE UPPER MOST SURFACE SUBJECTED TO STATIC LOAD EQUIVALENT TO THAT BY STAKING ON IT. THE MIN. NO. OF SIMILAR PACKAGES REQUIRED TO REACH HEIGHT OF BETWEEN 6.5m TO 5.8m. THE LOAD SHALL BE APPLIED FOR 24 HOURS.

MATERIAL:

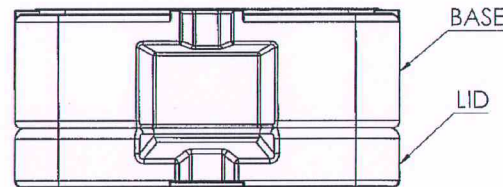
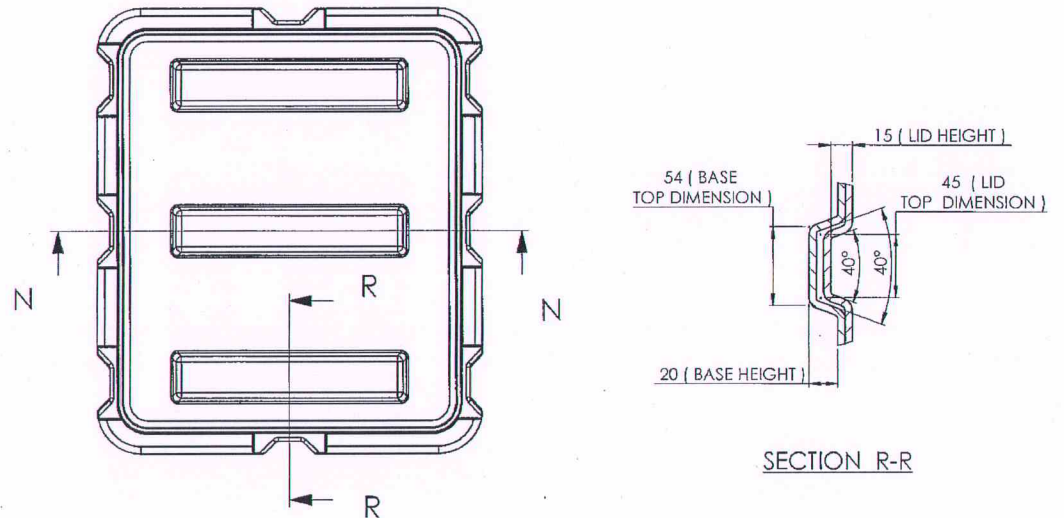
- FOR TOP & BOTTOM COVER :- LLDPE (LOW DENSITY POLYETHYLENE)
- CUSHION :- XLPE (CROSS LINKED POLYETHYLENE)

GENERAL NOTE:

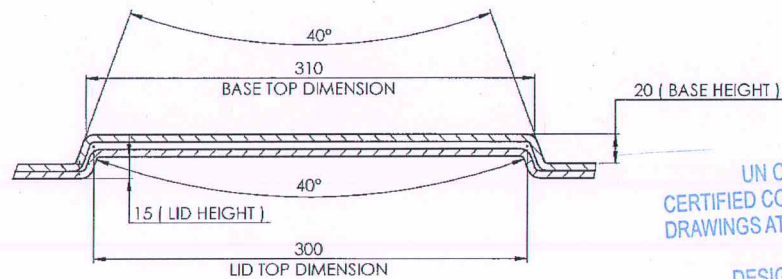
- GENERAL TOLERANCE FOR BOX : ±5mm
- BOX COLOUR : OLIVE GREEN
- WALL THICKNESS : 4 TO 5mm
- FOAM TOLERANCE : ±5mm
- ARROW MARK BY SCREEN PRINTING WITH WHITE PAINT
- FOR TEST OF BOX AS PER JSS 0253-01, MIL-STD-81 OF ASTM D 1489.
- HANDLE SHOULD BE FIXED AT THE MIDDLE OF THE BOX ON 3 SIDES.
- ENOUGH SPACE SHOULD BE PROVIDED BETWEEN THE HANDLE AND THE PAD LOCKS TO AVOID RUBBING OF THE USER FINGERS.
- THE HANDLE SHOULD NOT MOVE BEYOND 90° AND THE BOX SHOULD HANG PARALLEL TO THE HANDLE WHILE LIFTING.
- THE HANDLE SHOULD BE PROVIDED WITH SPRING LOAD TO MATCH WITH BOTTOM COVER IN NORMAL CONDITION.

IMPORTANT NOTE

- DRAWING & THE DIMENSIONS GIVEN FOR CUSHION & LLDPE ARE FOR GUIDANCE ONLY. MANUFACTURER SHOULD REFER THE SAMPLE BEFORE QUOTING TENDER.
- DRAWING PROVISIONAL.
- SAMPLE MUST BE SUBMITTED AND GET APPROVED BEFORE BULK SUPPLY.
- PART No. 12 TO BE PASTED TO LID (INSIDE)
- PART No. 4 & 7 TO BE PASTED ON PART No. 12 AS SHOWN



DETAILS WHILE STACKING BOXES



SECTION N-N

UN CONTROLLED COPY
 CERTIFIED CORRECT COPY OF APPROVED
 DRAWINGS AT THIS DATE: 11/3/22
 DESIGN & DRAWING OFFICE,
 ORDNANCE FACTORY, TIRUCHIRAPPALI - 620 016.

NOTE : - 3D MODEL WILL BE GIVEN IF REQUIRED IN (SAT FORMAT)

DAND005/2
 of 10/10/2021
 10/12/2021

Material:	DWG Details	Sub: TRANSIT CASE
Alt. Material:	DRAWN: V. Balu CHECKED: S. Harish	FOR: 40mm MGL
Hardness:	HOS/d&DO DO/Pradn F-26	PROJ.: Design Ref TEND - 1937*1
Finish:	DO/OC DO/DBO	DWG. No.: - TEND - 1937*2 A2 QPC -
Un tolerated dimensions IS:2102 Medium	10/12/2021	ORDNANCE FACTORY TIRUCHIRAPPALLI-16. WI. (Appx) gm SHEET: 3 OF 3