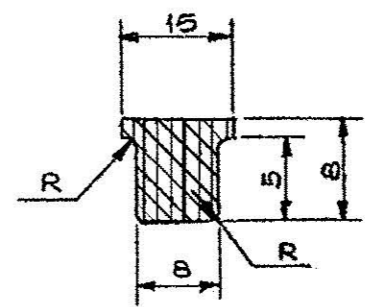
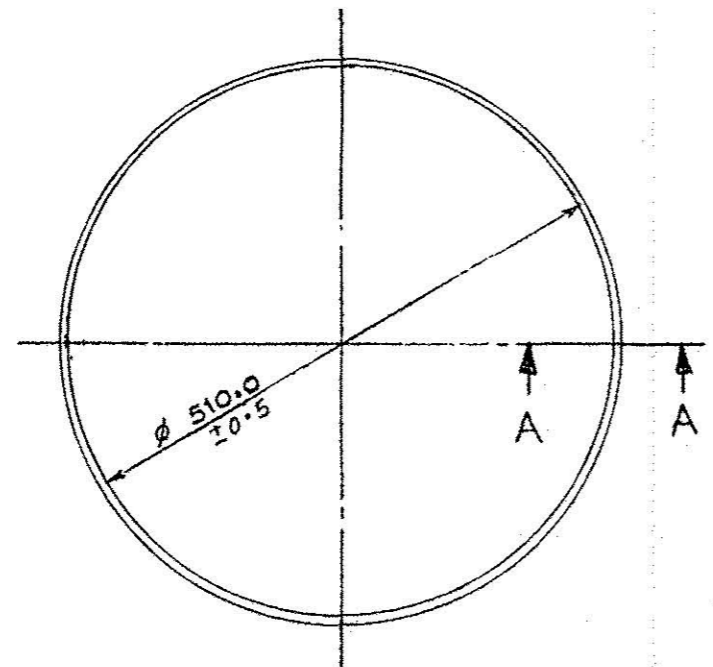


DRG NO. ARDE 2039
 DET N.11 SHTS SHT No. 4
 PART No. ARDE 2039
 DRG CONVENTIONS CONFORM TO IS: 696
 DIM ARE IN mm.
 GEN TOL. MEDIUM CLASS TO IS: 2102

NOTE

RING TO BE FREE FROM FLASH
 PRESERVED IN TALKDUST TO BE COATED
 WITH SILICON GREASE BEFORE ASSY.



PART SECTION 'A-A'
 (SCALE 2:1)

MATL:

NEOPRENE RUBBER TO SPEC IND/ME/884
 (PROV.) HARDNESS 50 TO 55.

Issue to the CM, O.F., Dum Dum

उत्पादक द्वारा निरीक्षण निश्चित की जाय प्रमाणित
 Certified Suitable to quick Manufacturer
 Inspected
 Date: 06/09/18
 Signature: [Signature]
 Rank: Foreman
 Directorate General of Aeronautical Development
 Directorate General of Aeronautical Development

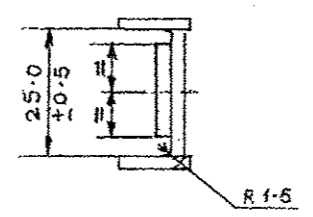
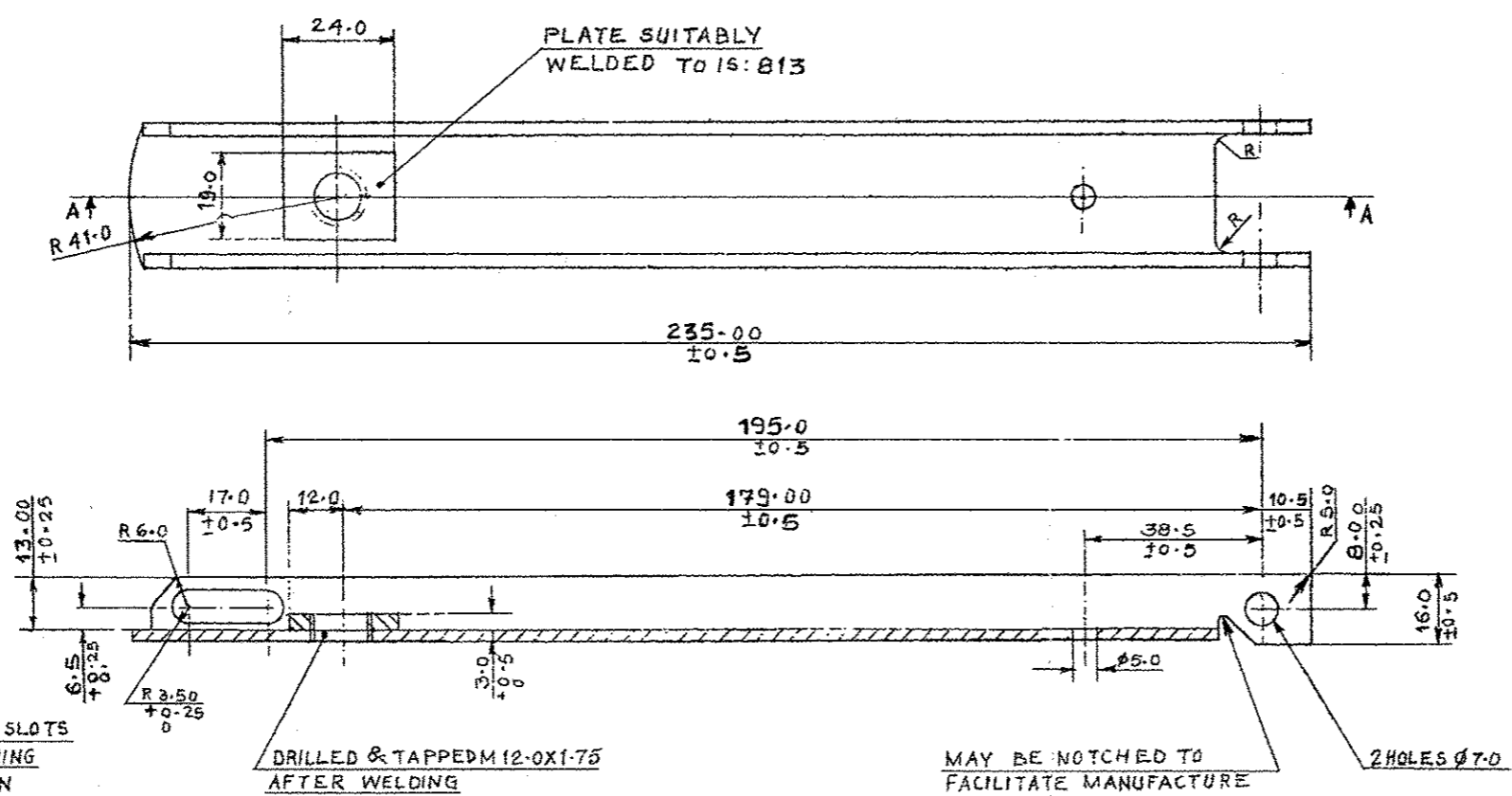
DRN	CHD	TRD	DSS	COMP	ASSY	DRG	ARDE 2039	SHT 4
CD	PASSED	SCALE	1:5	EST WEIGHT	DESIGN AUTHORITY	ARDE PUNE-21		
APPROVED	FOR DIRECTOR	CAUGE	SCHD	DATE	15-7-86			
R No.	DATE	AUTHORITY	BRIEF RECORD	ZONE	CD GO SIGN	MATL	AS ABOVE	
DRG SEALED						PROTECTIVE FINISH:-	DRG No. ARDE 2039	

RING RUBBER

DET N.11 SHTS SHT No.
 PART No.
 D.S CAT No.
 AHSP

PART NO. 2039
 DRG CONVENTIONS CONFORM TO IS 696
 DIM. ARE IN MM
 GEN TOL. MEDIUM CLASS TO IS: 2102
 ARDE 2039
 DRG NO.

NOTE :-
 ALL SHARP EDGES & BURRS ARE TO BE REMOVED
MATL.:
 MILD STEEL 2.5mm THICK TO SPEC. STEEL TO IS:513:2008 DESIGNATION CR 2



IF DESIRED HOLES & SLOTS
 MAY BE PUNCHED DURING
 BLANKING OPERATION

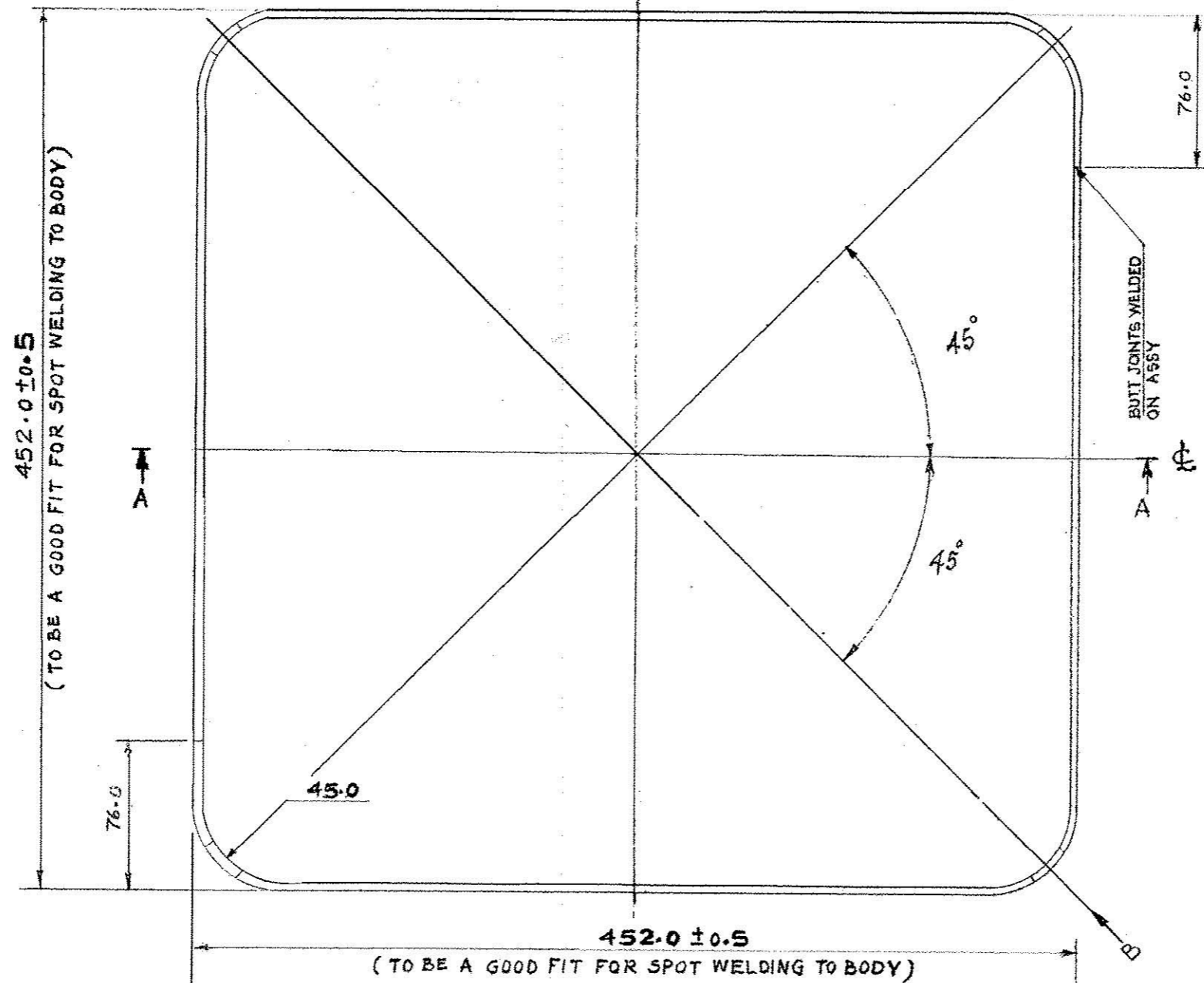
PROTECTIVE FINISH
 a) PHOSPHATED TO SPEC IS:3618 CLASS A 1.

SECTION AA

DRN: <i>Pratik</i>	CHD	TRD	COMP	ASSY DRG ARDE 2039 SMT 4
C.D. <i>Pratik</i>	PASSED	SCALE: 1:1		DESIGN. AUTHORITY
APPROVED	<i>Pratik</i>	EST WEIGHT		ARDE PUNE-21
FOR DIRECTOR	<i>Pratik</i>	GAUGE SCHD		
MATL: AS ABOVE		DATE: 15-7-86		
DRG SEALED <i>Pratik</i>				DRG No
				ARDE 2039
				DET.No 12 SMTS SMT.No
				PART No.
				D.S.CAT No.
				AHSP

ARM

DRG CONVENTIONS CONFORM TO IS: 696
 DIM. ARE IN MM
 GEN. TOL. MEDIUM CLASS TO IS: 2102
 DRG NO ARDE 2039
 DET NO 5
 SHTS 3



MATERIAL
 MILD STEEL 3.15 mm THICK TO SPEC.
 STEEL TO IS:513:2008 DESIGNATION CR 2

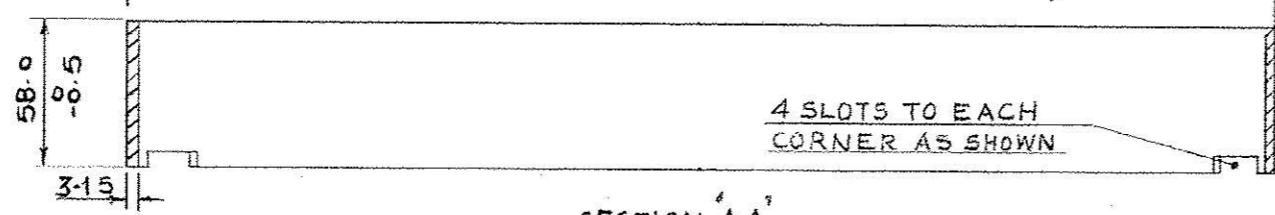
PROTECTIVE TREATMENT
 PHOSPHATED TO SPEC. IS: 3618 CLASS A 1.

NOTE - 1) ALL SHARP EDGES & BURRS ARE TO BE REMOVED
 2) ALL WELDING JOINTS SHOULD BE AS PER TO SPEC IS: 813

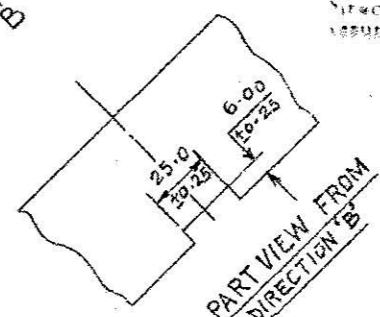
BUTT JOINTS WELDED
 ON ASSY

Issue to the CM, of, DumDum

उत्पादक द्वारा निरीक्षण निदेशन के योग्य प्रमाणित
 Certified Suitable to quick Manufacture
 Inspected
 Date 06/09/18
 Signature [Signature]
 Rank Foreman
 S No.
 Directorate General of Aeronautical Development
 Hyderabad.



SECTION AA



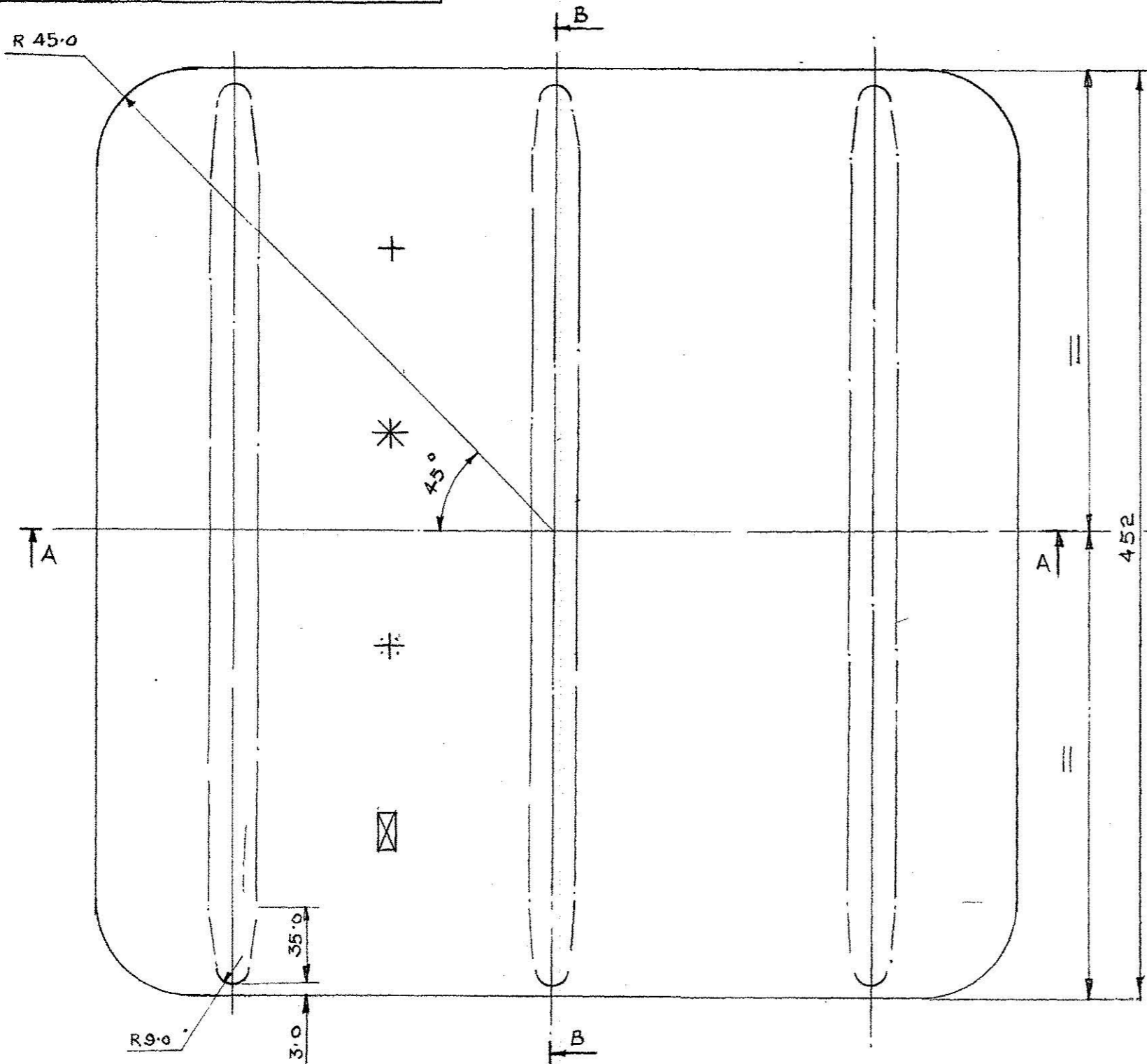
**MAY BE MADE IN ONE PIECE
 IF DESIRED**

DRN	CD	TRD	COMP	ASSY DRG ARDE 2039, SHT 3
1	CD	TRD	COMP	DESIGN AUTHORITY
31.10.17	RCMA(AA)1434/3/11.917	DRG.AMENDED VIDE AL. NO.21/2017	MATL	ARDE PUNE-21
R No	DATE	AUTHORITY	BRIEF RECORD	DATE: 15.7.86
DRG SEALD	PR	Signature	APPROVED FOR DIRECTOR	Gauge Schd
			MATL AS ABOVE	DATE: 15.7.86
			PROTECTIVE FINISH AS ABOVE	

RIM

DRG No
ARDE 2039
 DET No 5 | SHTS | SHT No
 PART No
 DS CAT No
 AHSP

DRG No.	ARDE 2039
DET No.7	SHTS
PART No.	
DRG CONVENTIONS CONFORM TO IS: 696	
DIM ARE IN mm	
GEN TOL-MEDIUM CLASS TO IS: 2102	

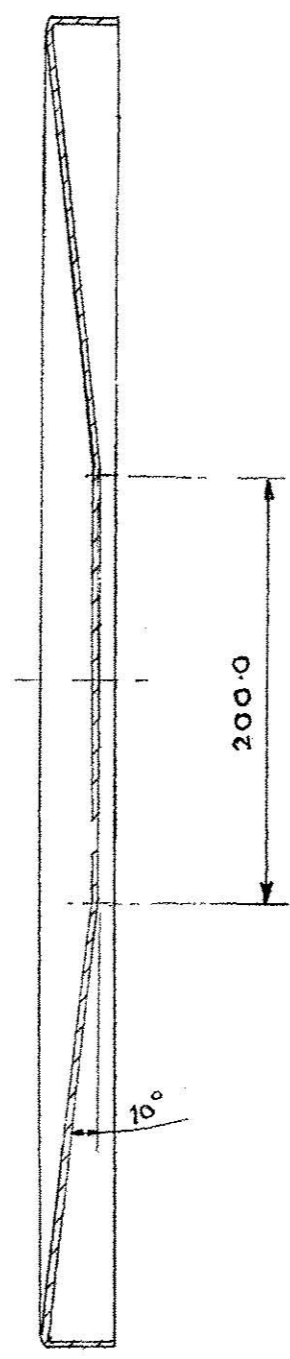


NOTE :-
 ALL SHARP EDGES & BURRS ARE TO BE REMOVED.
MATL :-
 MILD STEEL 1.25 mm THICK SPEC, STEEL TO IS:513:2008
 DESIGNATION CR 2

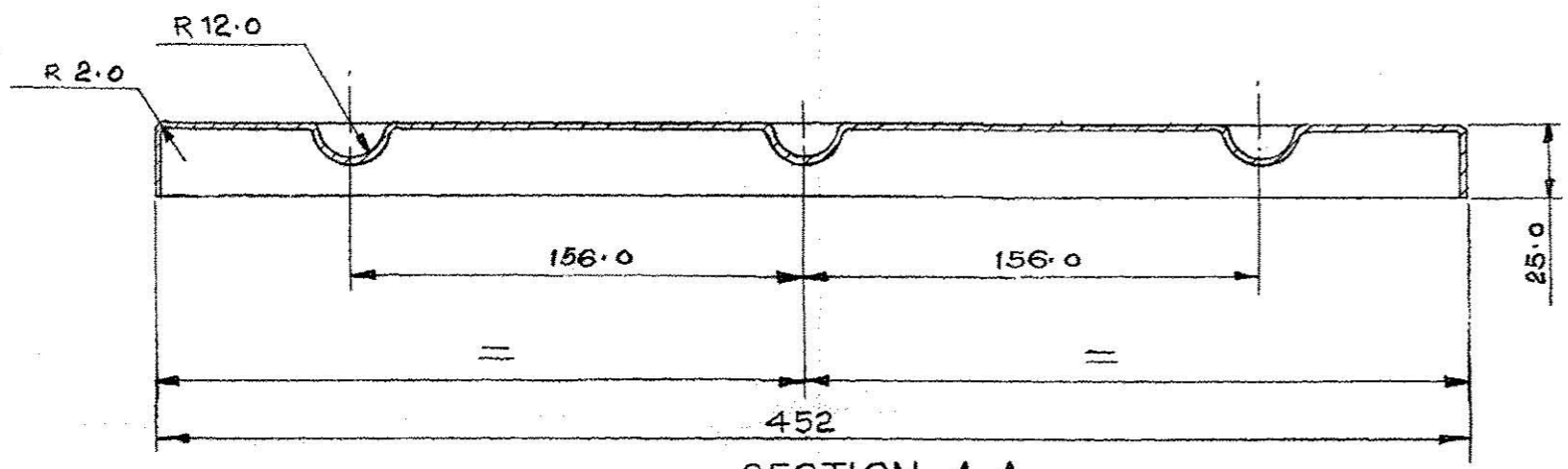
PROTECTIVE TREATMENT :-
 PHOSPHATED TO SPEC IS: 3610 CLASS A 1

MARKING TO BE EMBOSSED IN RECESS IN 12 mm LETTERING

- ☒ SERIAL No. OF BOX AS APPLICABLE
- ⊕ MARK OF BOX AS APPLICABLE
- * CONTRACTORS INITIALS RECOGNISED TRADE MARK OR APPROVED INSPECTION STAMP
- + YEAR OF MANUFACTURE



SECTION-BB



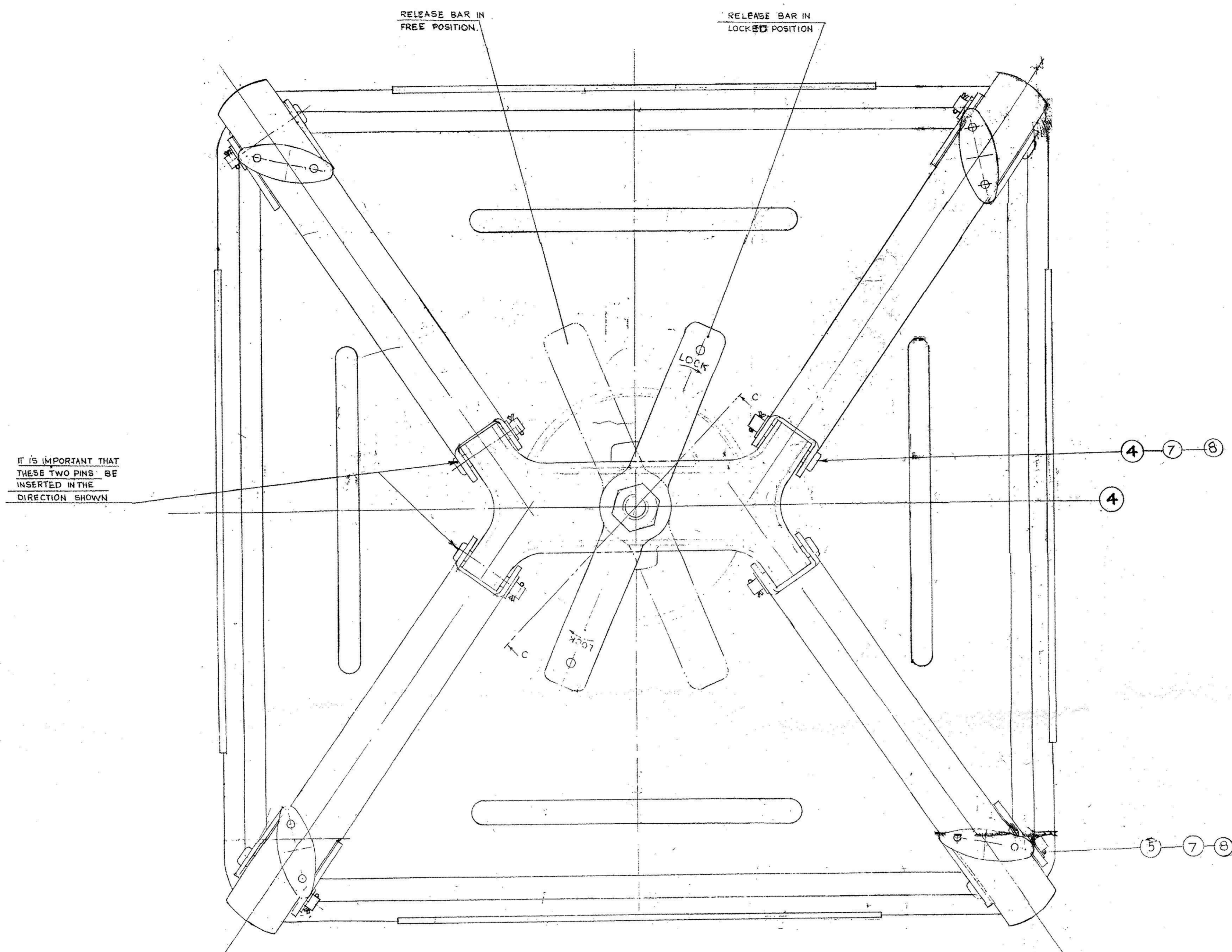
SECTION A-A

Issue to the G.M,
 O.F., Dumdum

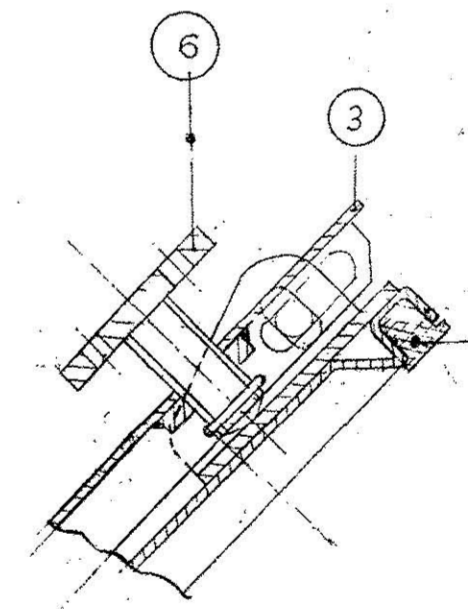
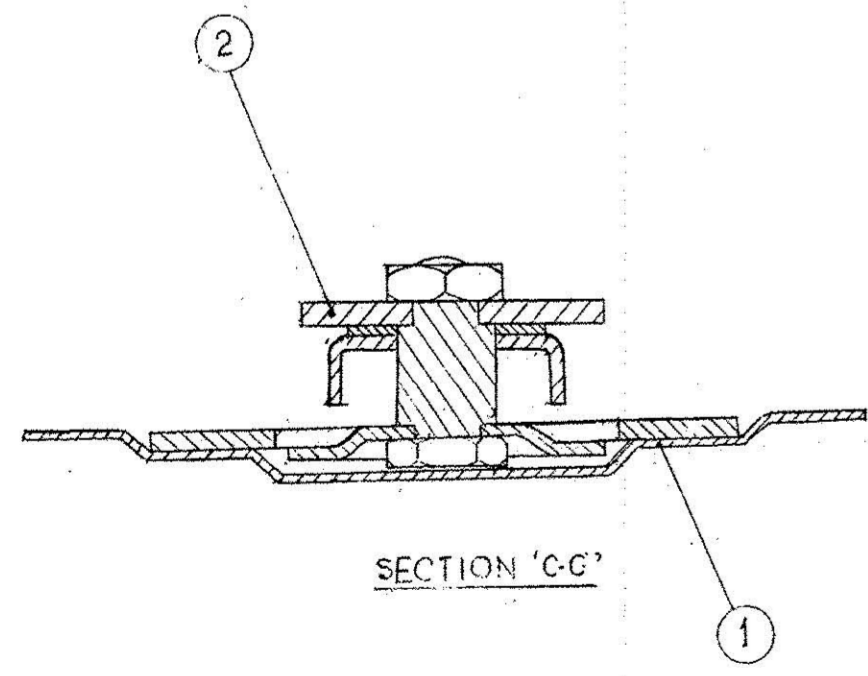
उत्पादक द्वारा निरीक्षण निदेशन के साथ प्रमाणित
 Certified Suitable to quick Manufacture.
 Inspected
 Date: 05/10/18
 Signature: [Signature]
 Rank: Foreman
 S.No.
 हस्तक्षेपित मूल्यांकन प्रमाणपत्र
 Directorate General of Aeronautical Quality Assurance.

DRN DSS	CHD	TRD	SVG	COMP	ASSY DRG ARDE 2039 SHT 4
CD	PASSED	SCALE 1:2	EST WEIGHT	DESIGN AUTHORITY	ARDE PUNE-21
APPROVED	FOR DIRECTOR	Gauge SCHD	DATE 15-7-86		
R No.	DATE	AUTHORITY	BRIEF RECORD	ZONE	CD GO SIGN
DRG SEALED				PROTECTIVE FINISH: AS ABOVE	
BOTTOM					
					DRG No. ARDE 2039
					DET No.7 SHTS SHT No.
					PART No.
					D S CAT No.
					AHSP

Q No.	NOMENCLATURE	QTY	DRG No.	MATL
1	LID (WELDING ASSY)	1	ARDE 2039	2
2	PRESSURE PLATE SUB ASSY	1	57 D 25	5
3	ARM	4	57 D 25	12
4	PIN 'A'	4	ARM 1025	-
5	PIN 'B'	4	57 D 25	-
6	BOLT	4	57 D 25	-
7	SPLIT COTTER PIN 2.5X14 IS: 543	12	NO PLATED	-
8	PUNCHED WASHER M3 16.2016	8	NO PLATED	-
9	RING RUBBER	1	ARDE 2039	11



IT IS IMPORTANT THAT THESE TWO PINS BE INSERTED IN THE DIRECTION SHOWN



9 RING RUBBER TO BE SECURED BY APPROVED RUBBER ADHESIVE

Issue to the am,
 O.F., Dgm D4m
 Certified Suitable to quick Manufacture & Inspected
 Date: 06/09/82
 Signature: [Signature]
 Rank: Foreman
 Directorate: [Signature]
 Directorate: [Signature]

PART SECTION 'A-A'

- PROTECTIVE FINISH:
- a) PHOSPHATED TO IS: 3618 CLASS A1.
 - b) TO BE PAINTED EXTERNALLY AND INTERNALLY WITH ONE COAT OF READY MIXED PAINT AIR DRYING MATT FOR GENERAL PURPOSES RED OXIDE (IS: 446 TO IS: 5) BRUSHING/ SPRAYING/ DIPPING TO SPEC: IS: 168.
 - c) TO BE PAINTED EXTERNALLY & INTERNALLY WITH ONE COAT OF READY MIXED PAINT: SEMI-GLOSSY/ MATT FINISH, OLIVEGREEN TO SPEC: IS: 168 WITH ISC SHADE 220 OR SPEC: IS: 5.

DRN	DSS	CHD	3/12	TRD	DSS	COMP	ASSY	ORG	ARDE 2039, SHZ
CD	APPROVED	PASSED	SCALE	1:1	DESIGN	AUTHORITY	ARDE	PUNE-21	
1	17/11/82	DRG AMENDED	VIDE AL NO 586	APPROVED	FOR DIRECTOR	DATE	15-7-82		
R	DATE	AUTHORITY	BRIEF RECORD	ZONE	C.D.	G.O.	MATL		
DRG	SEALED	PROVISIONAL	APPROVED	FOR DIRECTOR	DATE	15-7-82			

SEALING LID-ASSEMBLY

DRG No. ARDE 2039
 DET No. 45HTS 18HTN 4
 PART No.
 D.S. CAT No.
 AHSP