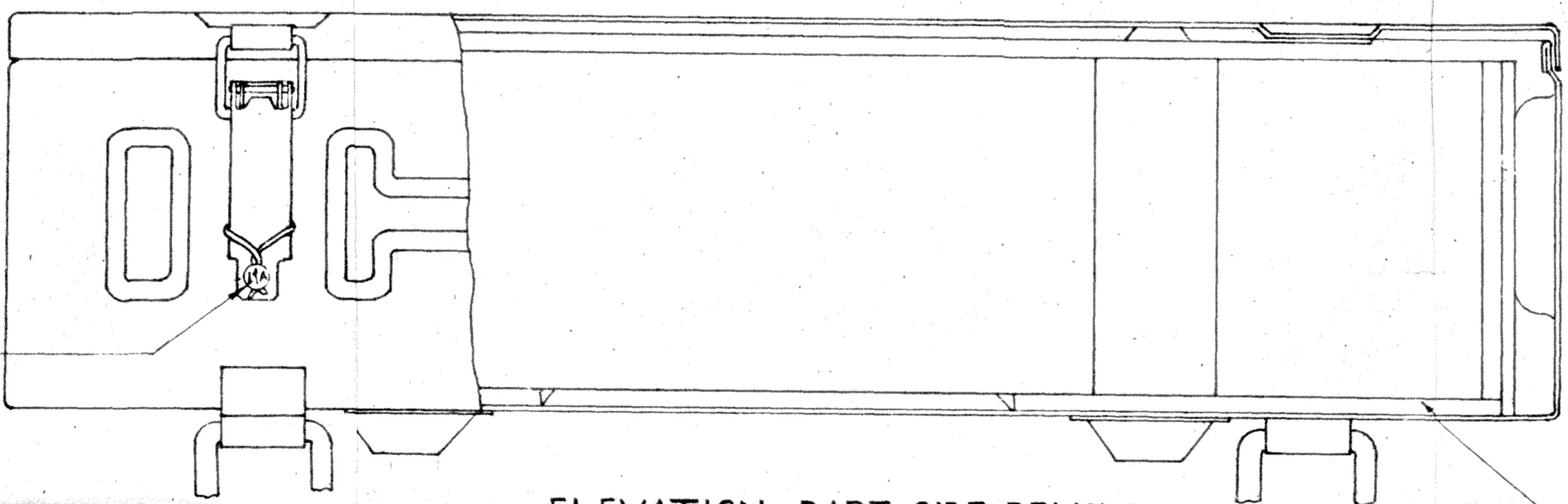
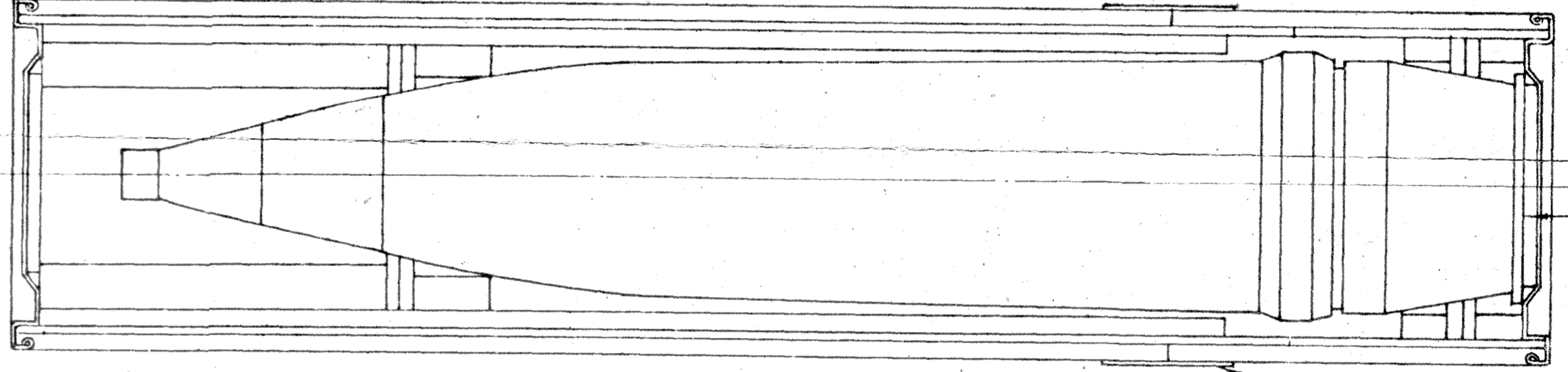


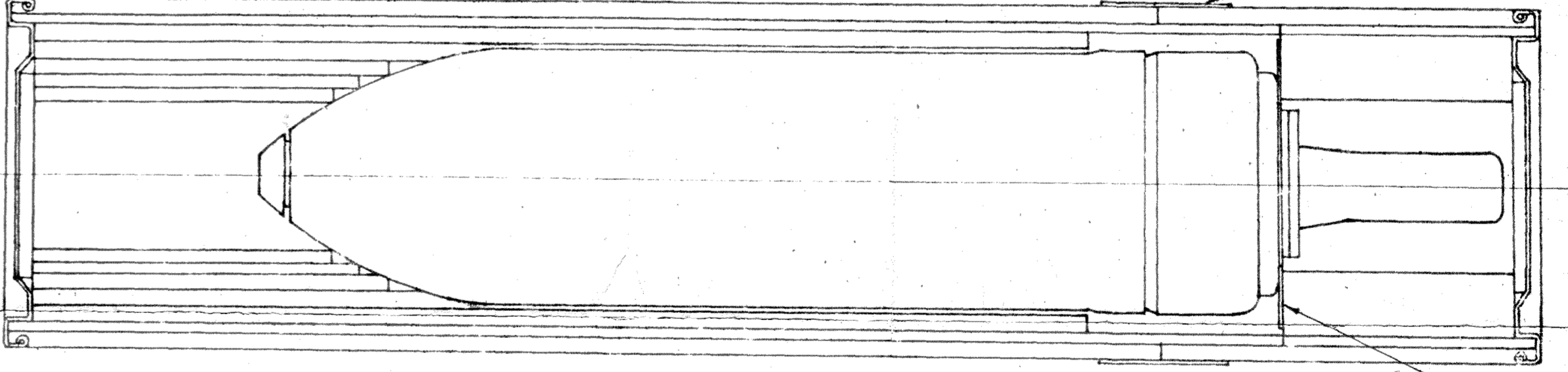
PLAN - LID REMOVED



ELEVATION - PART SIDE REMOVED



AMN. CONTAINER, 39 A
TO HOLD 1 SHELL OF 105 mm IFG HE, 1B, OR BE-SMOKE 1A OR ILLUMINATING 1A
(FUZED OR PLUGGED) OR BE (FUZED OR PLUGGED) SCREENING / COLOURED SMOKE, 3A (PLUGGED)
OR ILLUMINATING 1A (PLUGGED) OR INERT 1A OR ILLUMINATING 2A (PLUGGED).



AMN. CONTAINER, 39 B
TO HOLD 1 SHELL 105 mm IFG. H.E.S.H. 1A

- NOTES:-**
- (A) AFTER PACKING SOFT GALVANISED STEEL WIRE ϕ 0.9 TO ϕ 1.25 WITH SUITABLE LENGTH CONFORMING TO SPECS: 280:1978 (REAFFIRMED IN 1993) IS TO BE PASSED THROUGH THE HOLE OF THE CATCH LOCKING THE ENDS OF THE WIRE ARE BROUGHT OVER THE CATCH PIECE TWISTED & SEALED WITH LEAD SEAL OF ϕ 10 WHICH IS STAMPED WITH THE INSPECTORS OR REPACKING DEPOT'S MONOGRAM OR RECOGNISED INITIALS THE ENDS OF THE WIRE SHOULD BE LEFT LONG ENOUGH TO ENABLE UNTWISTING BY HAND.
 - (B) PACKING OF THE CONTAINERS TO BE AS PER SPECIFICATION 1A 922(9) AFTER PACKING THE LID & BODY ARE TO BE SEALED TOGETHER WITH TWO TURNS OF TAPE ADHESIVE WATERPROOF FABRIC 50 mm WIDE TO SPEC. IND/ME/7900 (LATEST ISSUE) FREE END FOLDED BACK 20 mm TO FACILITATE REMOVAL.

FOR METHOD OF STENCILLING SEE DESIGNER'S REF. CQA(A)/AMN/ST/287.

ITEM No.	DESCRIPTION	PART No.	DESIGNER'S REF.	D.S. CAT. No.	No PER SET
1	AMN CONT BOX C 43 A	ISV 529 A	CQA(A)AMN/2608	NOT APPLICABLE	1
2	AMN CONT 39 A OR AMN CONT 39 B	ISV 414 A ISV 454 A	CIA/AMN/1563 CIA/AMN/1853	NOT APPLICABLE NOT APPLICABLE	2
3	PIECE PACKING END	ISV 1823	CQA(A)/AMN/2650	NOT APPLICABLE	2
4	PIECE PACKING BOTTOM 280 X 205 X 6 THICK (PLYWOOD MR TYPE AB TO SPEC IS:303(LATEST VERSION)	NOT APPLICABLE	NOT APPLICABLE	NOT APPLICABLE	2
5	DISC MILLBOARD TO SPEC J55 1-51-01 (ϕ 93.0 X 3 THICK) WAXED	---	---	---	AS REQD.
6	WASHER MILLBOARD, OD 120 X 1.65 X 1.25 THICK TO SPEC J55 1-51-01	---	---	---	2

R.N.	DATE	AUTHORITY	REVISION	ZONE	AMSP D.D. SIG.
11-6-90	DC 36124-A	IN ZONE D-C 2-5 UNDER DESCRIPTION AMN CONT. 39 A AMENDED. IN DETAIL NOMENCLATURE "OR INERT 1A" ADDED.			
14-7-95	DC 35975-A	DETAIL NOMENCLATURE AMENDED.			
20-3-96	DC 35941-A	DRG. FOR PART BOX INVERTIBLES ADDED. SPECS. UPDATED. UNDER LIST OF COMP. D.S. CAT. NO. COLUMN NOT APPLICABLE. WITH NO. 4 TO 6 PARTS OF DESIGN. SEE DRAWING. NOT APPLICABLE. LEADERS DETAIL NOMENCLATURE AMENDED.			
3-12-91	D.C. 35228-A	DETAIL NOMENCLATURE AMENDED.			
5-10-91	D.C. 35187-A	NOMENCLATURE AMENDED.			
25-9-89		TRACED WITHOUT CHANGE			
26-5-88	D.C. 34626-A	DRG. PROV. SEALED			

DRN. BBJ. CHD. SD/- TRD. DMN. COMP. SD/-
SCALE: 1:2
C.D. MAN. O/CDO. EST. MASS. :-
APPROVED FOR CQA(A) DATE: 19-4-89
MATERIAL: NOT APPLICABLE
PROTECTIVE FINISH: NOT APPLICABLE.

ASSY. DRG.
NOT APPLICABLE
DESIGNER'S REF.
CQA(A)AMN/2650
PART. No.
ISV 482 GA
D.S. CAT. No.
NOT APPLICABLE
AHSP: CQA(A)KIRKEE

AMMUNITION CONTAINER, ASSY. 146 A
CONSISTING OF AMN. CONT. BOX C 43 A, 2 AMN. CONT. 39 A OR 39 B & PACKING FITMENTS TO HOLD 2 SHELLS OF 105 mm IFG. HE 1B (FUZED OR PLUGGED) OR BE, SCREENING / COLOURED SMOKE, 3A (PLUGGED) OR HESH 1A. OR INERT 1A. *

R.N.	DATE	AUTHORITY	REVISION	ZONE	AMSP D.D. SIG.
04-02-2013	DC 37350-A	UNDER LIST OF COMPONENT, AGAINST ITEM NO. 4, DESCRIPTION AMENDED.			
21-08-02		SCANNED WITHOUT CHANGE			
23-01-98	DC 36372-A	UNDER NOMENCLATURE OF STORE, AFTER INERT 1A, OR ILLUMINATING 2A (PLUGGED) ADDED UNDER AMN CONT 39A AFTER INERT 1A OR ILLUMINATING 2A (PLUGGED) ADDED.			