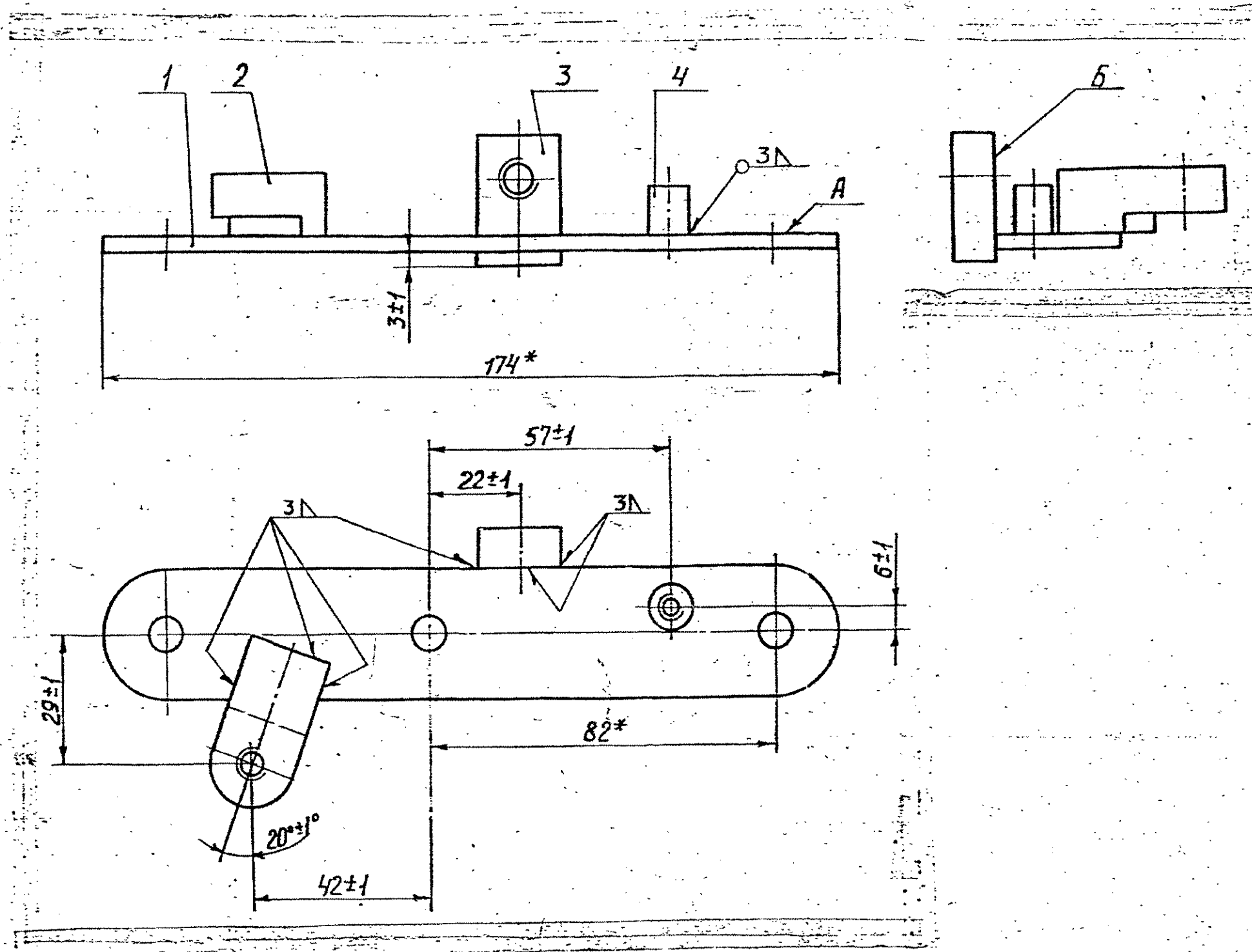


DRAWING NUMBER
175 60 049C6.



1. NON-SQUARENESS OF SURFACE "A" TO SURFACE "B" SHOULD NOT EXCEED 1mm WITHIN THE OVERALL DIMENSIONS OF THE COMPONENT.
2. WELDING IN THE MIDST OF SHIELDING GASES IS ALLOWED.
- ③ 3. COATING — Zn 15, CHROMATIZING PRESENCE OF COATING NEED NOT BE CHECKED IN THE HOLE.
4. *DIMENSIONS FOR REFERENCE.
- ⑥ 3. COATING: CHEMICAL OXIDIZING, OIL FINISHING, OR CHEMICAL OXIDIZING, PHOSPHATING, OIL FINISHING.

DRG. CREATED BASED ON RUSSIAN ORIGINAL ISSUE-A.

PILOT SAMPLE SHOULD BE APPROVED BY A H S P BEFORE BULK PRODUCTION.

EST. WT. 0.233Kg ✓	TO BE STAMPED OR MARKED WHERE INDICATED THUS # (LETTERS)
ALL SHARP EDGES AND CORNERS TO BE REMOVED UNLESS OTHERWISE STATED MACHINED CORNERS TO HAVE R OUTSIDE R INSIDE EQUIVALENT CHAMFERS ARE PERMISSIBLE.	

DRN	CPK	MATERIAL	USED ON
CHD	PROBING		175-4566
TCD	PROBING		172-45-060C6 c6
FAPPD	1.1.2	CONTROLLERATE OF QUALITY ASSURANCE (HEAVY VEHICLES)	
DATE	12.2.89	A. A. A. D. J.	
SCALE	1:1	DIMENSIONS IN mm.	
TOLERANCE ON DIMNS UNLESS OTHERWISE STATED IS 2102-69		TITLE	
		BRACKET ASSY.	
ISSUE	DATE	NATURE OF AMENDMENTS	D S CAT NUMBER
6	11-1-89	AMOT. LIST 6/8, Book-8	
5	11-1-89	ITEM LIST AMENDED	
			DRAWING NUMBER
			175-60 049C6.

F-135
38

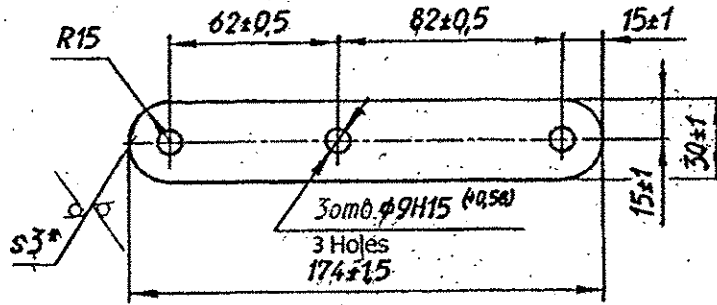
SIZE A2

COMMON TO T-72
DRG. INDIANISED BASED ON RUSSIAN ORIGINAL ISSUE - 6

DRAWING NUMBER
175.60.083

SHEET No. 1 OF 1

Rz320/ (✓)



ALT. MATL. STEEL CRSS '0' IS 513-94
AУТН: (QACHY) (летер no. 094/1FD-V/MTPE/OE дд. 17.3.2005)

1. Материал-заменитель лист 3 ГОСТ 19903-74
K270B 5-III-10kn ГОСТ 16523-97
2. *Размер для справок.
3. Допуск плоскостности поверхности 1 мм
4. Остальные требования по 520.TY1.

356
SUPPLY CODE
U-01-1-4

F-107
36

D 90213

1. Alternate material sheet 3 GOST 19903-74
K270B 5-III-10kn GOST 16523-97
2. * Dimensions for reference.
3. Tolerance for flatness of surface should not exceed 1 mm.
4. Other requirements are as per 520.TY1.

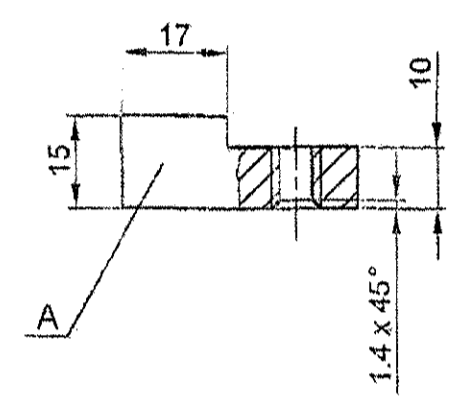
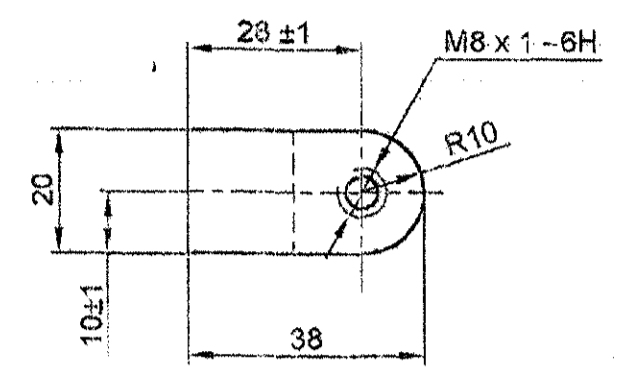
PILOT SAMPLE SHOULD BE APPROVED BY A H S P BEFORE BULK PRODUCTION.

		EST. WT. (Kg) 0.119	TO BE STAMPED OR MARKED WHERE INDICATED THUS # (LETTERS)
		ALL SHARP EDGES AND CORNERS TO BE REMOVED UNLESS OTHERWISE STATED MACHINED CORNERS TO HAVE R OUTSIDE R INSIDE EQUIVALENT CHAMFERS ARE PERMISSIBLE.	
		MATERIAL:- SHEET 3 GOST 19903-74 K330B 5-III-15 GOST 16523-97	USED ON:- 175.60.049Cb 188.60.019cbCb
ISSUE	DATE	NATURE OF AMENDMENTS	
DRN	1. 10.04	SCALE:- 1 : 2	CONTROLLERATE OF QUALITY ASSURANCE (HEAVY VEHICLES) AVADI
CHD	13.10	DIMENSIONS IN mm	
APPD	Chanchal	TOLERANCE ON DIMENSIONS UNLESS OTHERWISE STATED IS : 2102-69	TITLE:- STRAP / PLATE
DATE	8.6.04	ALL THREADS TO CONFORM TO	D S CAT NUMBER DRAWING NUMBER 175.60.083

SIZE A4

COMMON TO T-90
 DRG. REINDIANISED PREPARED BASED ON RUSSIAN ORIGINAL ISSUE - NIL. COMPARED WITH EXISTING ORIGINAL ISSUE - NIL. REPLACES 175 32 178 VIDE AMDT. LIST 6, PART II, BOOK - 6
 DRG. REDRAWN AND EXPLANATORY NOTE ADDED ON 28-6-91. (P. RAHANI, JTO) 28-07-95

DRAWING NUMBER
175.32.178 - A



- MATERIAL SUBSTITUTE STEEL 20A-I GOST 977-75.
- REQUIREMENTS FOR CASTING IS IN COMPLIANCE WITH 172 TY 10 FOR THE ACCEPTANCE OF COMPONENTS AS PER THE INVESTMENT PATTERN.
- UNSPECIFIED CASTING RADII MAX 3mm.
- DIMENSIONS WITHOUT TOLERANCES ARE AS PER ACCURACY CLASS - I GOST 2309-55.
- ON SURFACE A REMAINDER FROM FEADER WITH HEIGHT UPTO 3mm IS ALLOWED.

EXPLANATORY NOTE :-

- REFERENCE MATERIAL QUOTED STEEL 25 A - I GOST 977 - 75.
STRUCTURAL STEEL CASTING GROUP - I TO GRADE OF STEEL 25 A GOST 977 - 75.
- REFERENCE NOTE 1 ON ALTERNATIVE MATERIAL : STEEL 20 A - I GOST 977 - 75.
STRUCTURAL STEEL CASTING GROUP - I TO GRADE 20 A GOST 977 - 75.
- CHEMICAL COMPOSITION OF STEEL GRADES 25 A & 20 A AS PER GOST 977 - 75.

GRADE OF STEEL	CONTENT OF ELEMENTS %					RESIDUAL %		
	C	Si	Mn	Cr	S	P	Ni	Cu
25 A	0.22 - 0.30	0.20 - 0.52	0.35 - 0.90	0.30	0.05	0.05	0.30	0.30
20 A	0.17 - 0.25	0.20 - 0.52	0.35 - 0.90	0.30	0.05	0.05	0.30	0.30

- MECHANICAL PROPERTIES OF STEEL GRADES 25 A & 20 A AS PER GOST 977 - 75.

GRADE OF STEEL	ULTIMATE STRENGTH	YIELD POINT	ELONGATION	REDUCTION IN AREA	IMPACT STRENGTH
	Kgf/mm ²	Kgf/mm ²	%	%	Kgm/cm ²
25 A	45	24	19	30	4.0
20 A	42	22	22	35	5

ALTERNATE MATERIAL: STEEL GRADE Fe 410W ; IS: 2062-80
 AUTHORITY: CQA (HV), Leher NO: 091/IFD/MTPF/OE dt. 17-03-2005
 P. 1/12/110

PILOT SAMPLE SHOULD BE APPROVED BY A H S P BEFORE BULK PRODUCTION.

EST. WT. 0.06	TO BE STAMPED OR MARKED WHERE INDICATED THUS # (LETTERS)
ALL SHARP EDGES AND CORNERS TO BE REMOVED UNLESS OTHERWISE STATED MACHINED CORNERS TO HAVE R OUTSIDE R INSIDE EQUIVALENT CHAMFERS ARE PERMISSIBLE.	

DRN	- sd -	MATERIAL :- STEEL 25A-I	USED ON :- 188 60 019cbCb
CHD	- sd -	GOST 977 - 75	175 30 049 Cb
TCD	- sd -	CONTROLLERATE OF QUALITY ASSURANCE (HEAVY VEHICLES) AVADI	
APPD	- sd -	TITLE :- BOSS	
DATE	28-11-88	D S CAT NUMBER	DRAWING NUMBER
SCALE	1:1		175.32.178 - A
DIMENSIONS IN mm			
TOLERANCE ON DIMNS UNLESS OTHERWISE STATED IS: 2102 - 69			
ALL THREADS TO CONFORM TO			
ISSUE	A	N OF A No. CQA(HV)/T90/60/001.	
DATE	5.7.04	NATURE OF AMENDMENTS	

F-7B
36
SIZE A2

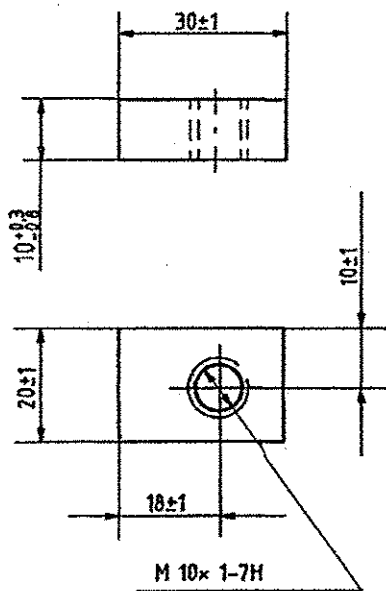
DRG. REINDIANISED BASED ON RUSSIAN ORIGINAL ISSUE-6
COMMON TO T-90
IR. RAMANIL, JTO
31-10-05

F-118

DRAWING NUMBER
155.20.233

SHEET No. 1 OF 1

~(V)



ALT. MATL.
Steel Gr. 070 M20 (EN-3A)
TO BS. 970-83
AUTHY:- CQA(HV) letter no.
091/PD-V/MTPP/OE
dtd. 17.3.2006

1. DRAFTS AND SHRINKAGE OF EDGES ARE ALLOWED.
2. ALTERNATE MATERIALS: STEEL GRADES FROM 10 THROUGH 35, GOST 1577-70 OPEN-HEARTH.

PILOT SAMPLE SHOULD BE APPROVED BY A H S P BEFORE BULK PRODUCTION.

		EST. WT. (Kg)	TO BE STAMPED OR MARKED WHERE INDICATED THUS # (LETTERS)
		0.045	
ALL SHARP EDGES AND CORNERS TO BE REMOVED UNLESS OTHERWISE STATED MACHINED CORNERS TO HAVE R OUT-SIDE R INSIDE EQUIVALENT CHAMFERS ARE PERMISSIBLE.			
6A		MATERIAL:-	USED ON:-
5.7.04	N OF A No. CQA(HV)/T-90/60/001	STEEL 15 GOST 1577-70	176.61.006cb-1Cb
ISSUE	DATE	OPEN-HEARTH	188.60.019cbCb (6A)
DRN		CONTROLLERATE OF QUALITY ASSURANCE (HEAVY VEHICLES)	
Sd/=		AVADI	
SCALE:-		TITLE:-	
DIMENSIONS IN mm			
Sd/=		BOSS / BLOCK	
TOLERANCE ON DIMENSIONS UNLESS OTHERWISE STATED IS: 2102-69			
Sd/=		D S CAT NUMBER	
ALL THREADS TO CONFORM TO			
DATE		DRAWING NUMBER	
09.10.86		155.20.233	
SIZE A4			