

(IN SUPERSESSION OF DRG. NO. 100/TC/0059 (b))

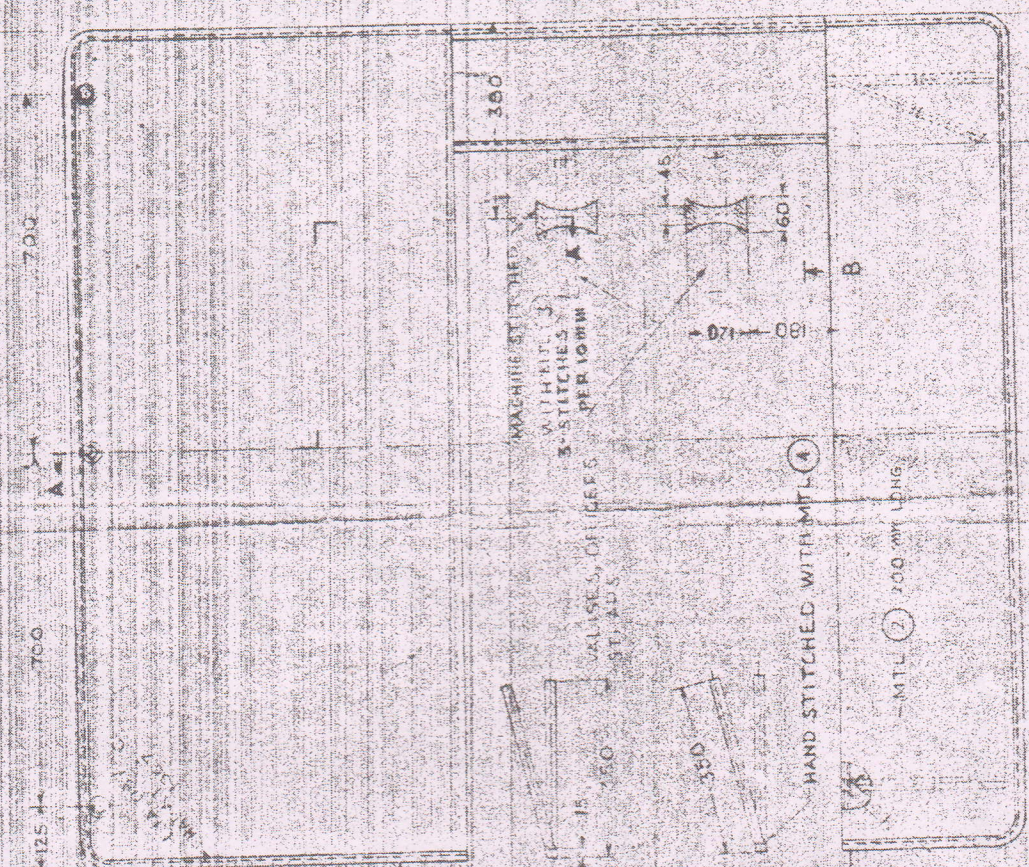
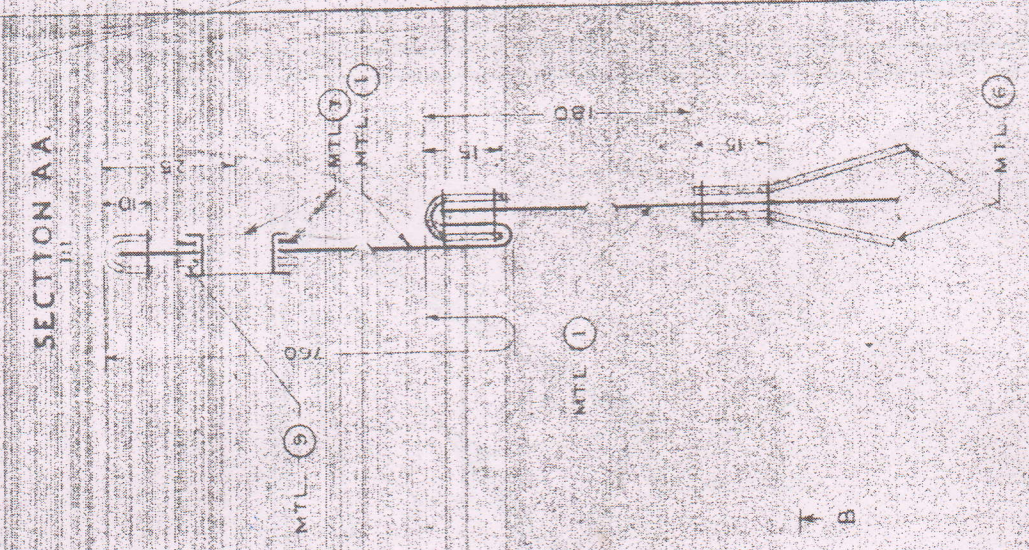
VALISE, OFFICERS, MK. 2. (COMPLETE & VALISE, STRAPS AND CONNECTING PIECE)

- CAT. No. 1JA 0871
- CAT. No. 1JA 0872
- CAT. No. 1JA 1212
- CAT. No. 1JA 0759

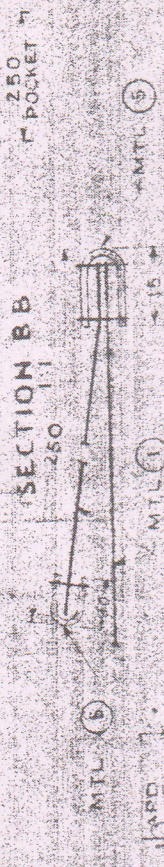
(ADDITIONAL PARTICULARS REQUIRED SEE MATERIAL & DELIVERY CLAUSES)

IN ACCORDANCE WITH SEPARATE DRAWINGS END TC 10629(8)

SECTION AA



SECTION BB



NOTE: ALL MACHINE STITCHINGS WITH MTL 4, 13 TO 14 STITCHES PER CM.

END PIECE TO BE STITCHED ALONG THIS EDGE AS SHOWN IN METRIC VIEW (SHEET No. 2)

DIMENSIONS IN MILLIMETRES TRACED FROM EXISTING DRG. COMP. FROM 100/TC/0708 (a)

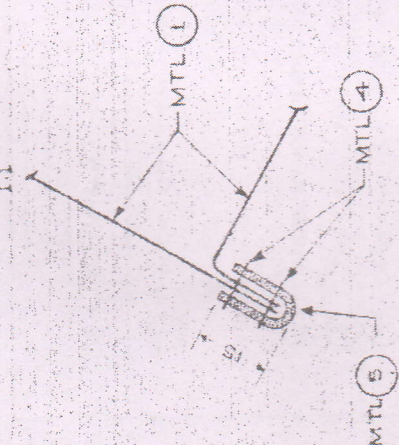
REG. APPD. TO SPECN No. /IND/TC/0706 (a) (b) C (IN SUPERSESSION OF DRG. No. IND/TC/0669 (b))

VALISE, OFFICERS, MK-2.

- CAT. No. IJA 0871 --- VALISE
- CAT. No. IJA 0872 --- STRAPS
- CAT. No. IJA 1212 --- CONNECTING PIECE
- CAT. No. IJA 0759 --- (ADDITIONAL PARTICULARS REQUIRED - SEE MATERIAL & DELIVERY CLAUSES.)

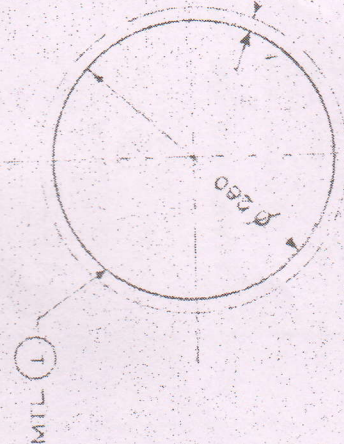
(COMPLETE I.C. VALISE, STRAPS AND CONNECTING PIECE IN ACCORDANCE WITH SEPARATE DRAWINGS.)

SECTION CC



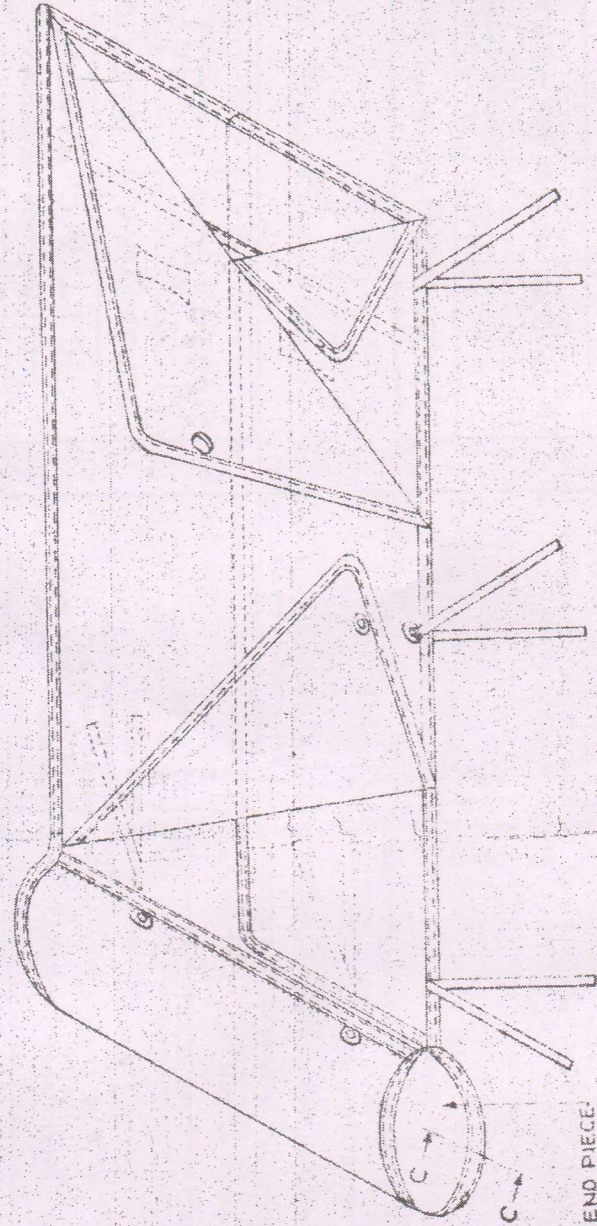
END PIECE

2-PER SET
1:5



15.00MM FOR SEAM

ISOMETRIC VIEW



SCHEMATIC DIMENSIONS IN MILLIMETRES

IND/TC/0706 BY: AB (a)	COMP	IND/TC/0706 BY: AB (a)	COMP	TCD	COMP	PSD	APPD
------------------------	------	------------------------	------	-----	------	-----	------

DRG. ATTD. TO SPECIM. No. /IND/TC/0708 (4) IN SUPERSESSION OF DRG.

IND/TC/0685 (L1)

VALISE, OFFICERS, MK. 2.

(COMPLETE U.S. VALISE, STRAPS AND CONNECTING PIECE.)

- CAT. No. IJA 0871
- CAT. No. IJA 0872
- CAT. No. IJA 1212
- CAT. No. IJA 0799

VALISE STRAPS CONNECTING PIECE

IN ACCORDANCE WITH SEPARATE DRAWINGS.

(ADDITIONAL PARTICULARS REQUESTED - SEE MATERIAL & DELIVERY CLAUSES) ACCEPTED SUPPLIES SHALL BE PACKED BY THE INSPECTION DEPOT AUTHORITIES AS DESCRIBED IN PARA. (U) ABOVE.

DELIVERY AND PACKING :-

MATERIAL :-

- (1) CLOTH 'C' HEAVY, CAT. No. IHB 0731 - IN ACCORDANCE WITH SEPARATE SPECIFICATIONS
- (2) POLYTHENE FILM, 0.04 - 0.08 (150 - GAUGE)

PACKAGING :-

(a) EACH VALISE SHALL BE DELIVERED IN A NEW CLEAN AND DRY CONDITION. EACH VALISE SHALL THEN BE SUITABLY FOLDED AND TIED WITH TWINE. JUTE, 3 - PLY AT 3 - PLACES TO FORM AN UNIT PACK (BUNDLE). 5 SUCH UNIT PACKS SHALL THEN BE TIED AT 3 - PLACES WITH TWINE, JUTE 3 PLY TO FORM A MULTIPLE PACK WHICH SHALL THEN BE WRAPPED WITH AN INNER LAYER OF POLYTHENE FILM AND AN OUTER LAYER OF CLOTH 'C' HEAVY OR AN EQUIVALENT HESSIAN CLOTH PREVIOUSLY APPROVED BY THE INSPECTOR TO FORM A COMPACT BALE.

THE BALE SHALL BE PROPERLY AND SECURELY STITCHED WITH DOUBLE TWINE, JUTE 3 - PLY WITH NOT LESS THAN 5 STITCHES PER CM. TAKING CARE NOT TO PIERCE THE INNER WRAPPINGS DURING STITCHING. SUFFICIENT HESSIAN CLOTH SHALL BE PULLED OUT AT EACH CORNER TO FORM 'EARS' OF ABOUT 15 - CM. IN LENGTH.

NOTE :-

THE OVERLAPS OF THE OUTERMOST LAYER OF HESSIAN CLOTH SHALL BE SUCH THAT THE HESSIAN CLOTH CAN BE PROPERLY AND SECURELY SEWN AROUND THE BALE AND THE OVERLAPS OF THE INNER LAYER SHALL BE AT LEAST 10 - CM. TO ENSURE FULL PROTECTION TO THE CONTENTS OF THE BALE.

(b) IF ORDERED FOR DELIVERY TO A LOCAL INSPECTION DEPOT THE STORE SHALL BE DELIVERED LOOSE IN FIRM'S RETURNABLE PACKS. AFTER INSPECTION THE

(C) BEFORE DESPATCH, EACH BALE SHALL BE LEGIBLY MARKED BY STENCIL SHOWING THE FOLLOWING DETAILS:

- 1 - NOMENCLATURE AND CAT. No. OF THE STORE.
- 2 - QUANTITY PACKED IN THE BALE.
- 3 - LOT AND SERIAL No. OF THE BALE.
- 4 - MONTH AND YEAR OF PACKING.
- 5 - NAME AND TRADE MARK OF THE MANUFACTURER.
- 6 - GROSS WEIGHT OF THE BALE IN Kg.
- 7 - NAME AND ADDRESS OF THE CONSIGNEE.
- 8 - INSPECTION NOTE No. AND DATE.
- 9 - A/T OR EXTRACT No. AND DATE.

PRE-INSPECTION :-

BEFORE TENDERING THE STORE TO THE GOVT. INSPECTOR, THE SUPPLIER WILL CARRY OUT A THOROUGH PRE-INSPECTION OF EACH DELIVERY TO SATISFY HIMSELF THAT THE STORES FULLY CONFORM TO THIS DRAWING.

INSPECTION :-

(a) IF ON EXAMINATION, MATERIAL FROM ANY PORTION OF A CONSIGNMENT IS FOUND NOT TO BE FULLY IN ACCORDANCE WITH THIS SPECIFICATION, THE WHOLE CONSIGNMENT IS LIABLE TO BE REJECTED.

(b) IF ON EXAMINATION OF 20 PERCENT OF ANY DELIVERY, 20 PERCENT OF THOSE EXAMINED ARE FOUND NOT TO CONFORM WITH THIS SPECIFICATION IN ANY RESPECT THEN THE WHOLE CONSIGNMENT MAY BE REJECTED. HOWEVER WHEN DELIVERY LOTS ARE LARGE THE DECISION MAY BE BASED ON THE EXAMINATION OF 10% ONLY I.C. IF ON EXAMINATION OF 10% OF THE DELIVERY, 20% OF THOSE EXAMINED ARE FOUND NOT TO CONFORM TO THIS SPECN, THE WHOLE DELIVERY MAY BE REJECTED.

(c) ALL VALISES, NOT FULLY IN ACCORDANCE WITH THIS SPECIFICATION, SHALL BE REJECTED.

WRK	COMP	PSD	MPD