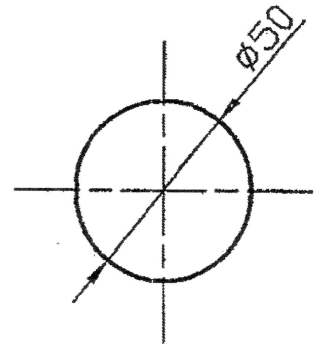
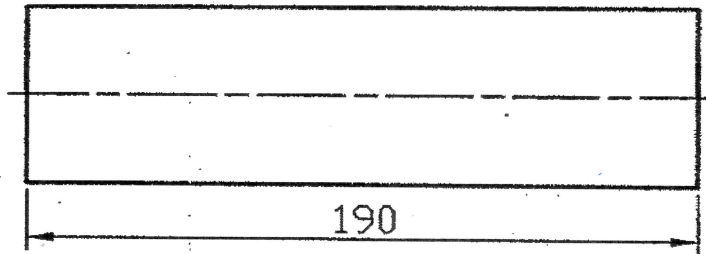


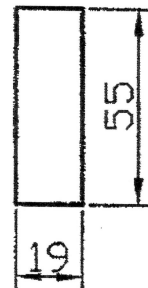
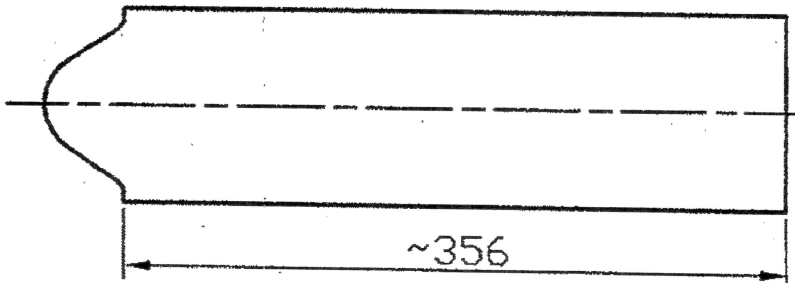
DIMENSIONS ARE IN mm.
UNTOLERATED DIMNS. AS PER IS : 2102 (MED)

BLANK BEFORE FORGING



BLUNT SHARP EDGES TO R 0.6mm

BLANK AFTER FORGING (FOR 5 COMPTS.)



UN CONTROLLED COPY
 CERTIFIED CORRECT COPY OF APPROVED
 DRAWINGS AT THIS DATE. 19/11/24

DESIGN & DRAWINGS OFFICE

ORDNANCE FACTORY, TIRUCHIRAPPALLI-620 015.

MATERIAL :- 35XH2M0A-W OST 3-98-80

ALT. MATERIAL :- STEEL GRADE 826 M31 TO BS 970. PT. 1 1983 CONDITION 'Z' WITH 'S' & 'P' CONTENT
 0.01 AND 0.015 MAX. RESPECTIVELY (ESR QUALITY STEEL)

PART NO.	DESCRIPTIONS	NO OFF	MATERIAL	TREATMENT	REMARKS
	SIGNATURE & DATE.	SUB: BLANK BEFORE & AFTER FORGING			SCALE NTS
	TRACED	FOR: SHIELD			STORE DRG.NO. C 2003
	DRAWN <i>gjh</i>	OF: 30mm CANNON			OPERATION NO.
	CHECKED	DES.REF.NO.			SHEETS: 01
	Y OIC/D&DO <i>g j enolans</i>	DRG. No.: TEND 2096			SHEET No.: 01
OFFICER/ PRODN.	ORDNANCE FACTORY TIRUCHIRAPPALLI-16.				
OFFICER/ D&DO					
AMENDMENTS	SIG. & DATE	APPROVED ON. 04/2009			