

41977

7490305101

2

DWG NO 077228A-00

SH 1

1

THIS DOCUMENT AND THE INFORMATION CONTAINED IN IT ARE PROPRIETARY AND CONFIDENTIAL TO OFT. NO PERSON OR ENTITY IS ALLOWED TO COPY, REPRINT, REPRODUCE OR PUBLISH ANY PART OF THIS DOCUMENT, NOR DISCLOSE ITS CONTENTS TO OTHERS, NOR MAKE ANY USE OF IT, NOR ALLOW OR ASSIST OTHERS TO MAKE ANY USE OF IT UNLESS BY THE PRIOR WRITTEN EXPRESS AUTHORIZATION OF OFT AND THEN ONLY TO THE EXTENT AUTHORIZED. COPYRIGHT-OFT.

UN CONTROLLED COPY

CERTIFIED CORRECT COPY OF APPROVED DRAWINGS AT THIS DATE 15.12.2020

Design & Drawing Office
Ordnance Factory,
Tiruchirappalli-620016

SHEET REV RECORD

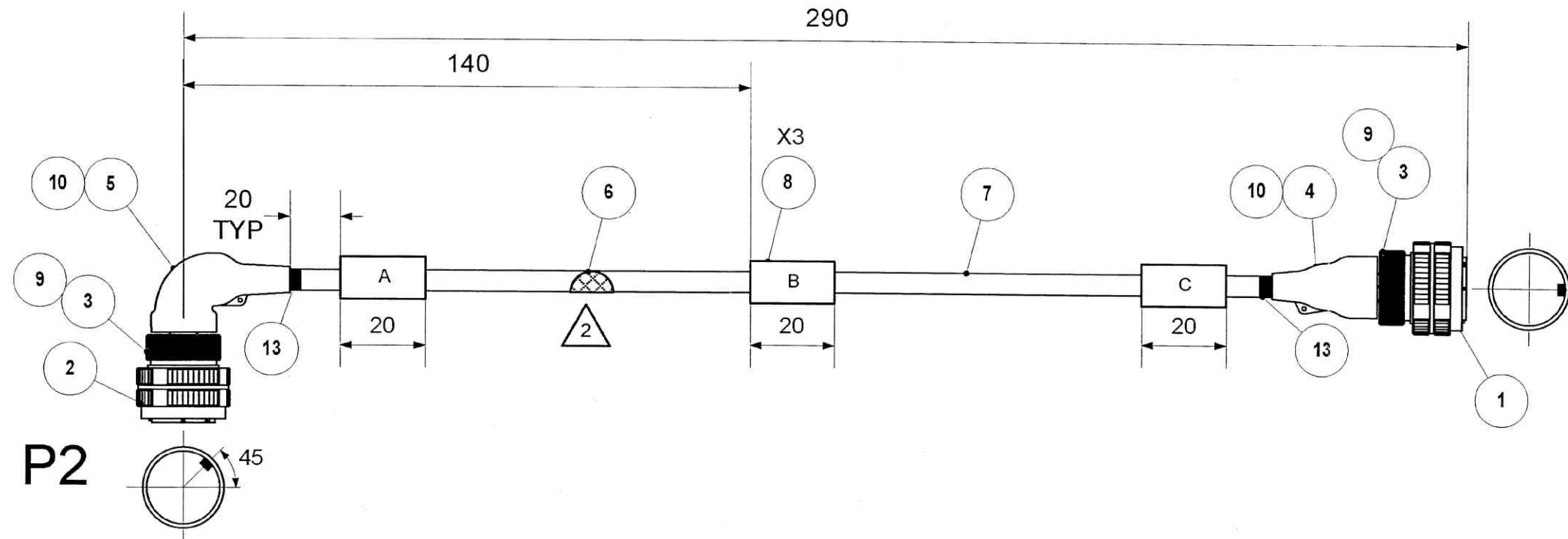
ALL SHEETS ARE THE SAME REVISION

REVISION RECORD

REV	ECO	DESCRIPTION	DATE	APVD
01		Freeze	15-Sep-13	
--		Released	01-Jul-14	L.Goldshtein
A-	VY95/00	Released	25-Jan-15	D.Nave

B

B



NOTES:

1. MANUFACTURING ACCORDING TO ELBIT 03711A-00

2 LEAVE THE SHIELD & BRAID POLYAMIDE LOOSE AS POSSIBLE FOR MAX FLEXIBILITY.

A

A

SEE SEPARATE PARTS LIST

A	B	C
WPKS1_P2 TO EMU_J2	ELBIT WPKS1 077228A-XX S/N____ MM/YY__REV__	WPKS1_P1 TO WPKS12B_J2

UNLESS OTHERWISE SPECIFIED		SIGNATURE	DATE	ORDNANCE FACTORY TIRUCHIRAPPALLI	
DIMENSIONS ARE IN MM PER ASME Y14.5M -1994		DRAWN	17/12/20	TITLE	
TOLERANCES LINEAR ANGULAR		CHECKED		FOR: PEDESTAL ASSY	
3rd. ANGLE PROJECTION		HOS/DDO	18/10/20	OF: 12.7MM SRCG	
SURFACE TEXTURE IN Micro INCH		OFFICER/PRODN		SIZE	CAGE CODE
		OFFICER/QC		B	SD592
		OFFICER/DDO		DWG NO	077228A-00
				SHEET 1 OF 2	

2

1

2

DWG NO 077228A-00

SH 2

1

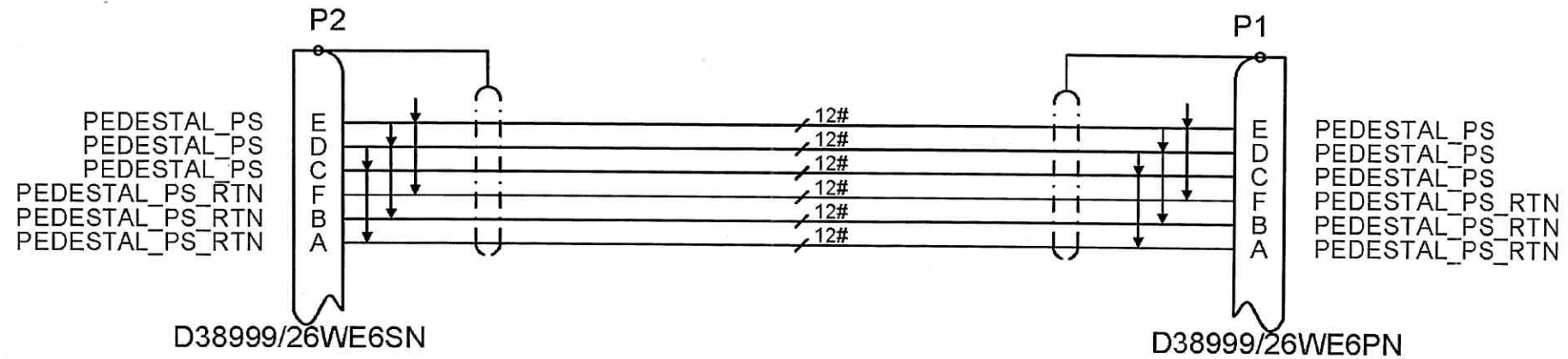
THIS DOCUMENT AND THE INFORMATION CONTAINED IN IT ARE PROPRIETARY AND CONFIDENTIAL TO OFT. NO PERSON OR ENTITY IS ALLOWED TO COPY, REPRINT, REPRODUCE OR PUBLISH ANY PART OF THIS DOCUMENT, NOR DISCLOSE ITS CONTENTS TO OTHERS, NOR MAKE ANY USE OF IT, NOR ALLOW OR ASSIST OTHERS TO MAKE ANY USE OF IT UNLESS BY THE PRIOR WRITTEN EXPRESS AUTHORIZATION OF OFT AND THEN ONLY TO THE EXTENT AUTHORIZED. COPYRIGHT-OFT.

FIN CONTROLLED COPY

CERTIFIED CORRECT COPY OF APPROVED DRAWINGS AT THIS DATE 15.12.2020

Design & Drawing Office
Ordnance Factory,
Tiruchirappalli-62001#

WPKS1



B

B

A

A

2

1

SIZE	CAGE CODE	DWG NO	
B	SD592	077228A-00	A-
			SHEET 2 OF 2

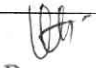
OFT

ASSEMBLY PARTS LIST

Assembly Parts List For: 077228A-00 Rev: A-

Status: Released Description: CABLE ASSY, WPKS1

FN	CMD	PART NUM	ECO	DESCRIPTION	MB	QTY	U\M	REF. DES./REMARKS	MFG. PN / CUSTOMER	LA	LI
1	PO	99931031M (99931031M)		PLUG CIRC 6 P NO.17	P	1	Each	PRS2	D38999/26WE6PN (More) - 272809930		
2	PO	99931029M (99931029M)		PLUG CIRC 6S NO.17	P	1	Each	P2	D38999/26WE6SN (More) - 272103508		
3	MP	031518E-03		ADAPTER D38999-III-17-05	M	2	Each				
4	VW	33230310M (33230310M)		BOOT SHRINK STR 1.12 TO .56	P	1	Each	FOR PRS2	202K132-25-01 (More) - 271461584		
5	VW	34334801M (34334801M)		BOOT SHRINK RA 1.12 TO .56	P	1	Each	FOR P2	222K132-25 (More) - 112022015		
6	VW	33373803M (33373803M)		BRAID TUBE .375ID CU/TIN(.625X	P	0.400	MR	BRAID	A-A-59569R36T0375 (More) - 167202020		
7	VW	33342603M (33342603M)		CABLE BRAID POLYAMID 9-14MM BL	P	0.951	FT	BRAID POLYIMID	RG600/F.66.10SW (More)		
8	VW	40687010577 (99963632M)		MARKER SLEEVE 1/2DIA X 2.0 WHT	P	3	Each	A,B,C	TMS-SCE-1K-1/2-2.0-9 (More) - 606100612		
9	HO	00072033N (00072033N)		STRAP TIE DOWN CRES L=14.25" PRE	P	2	Each	BAND	600-083-1		
10	YR	00003356N (00003356N)		ADHESIVE EPOXY POLYAMID KIT FO	P	10	GM	ADHESIVE	S1125 KIT-8 (More)		
11	YR	22016520877 (99620607M)		TAPE ELECT. TEFLON 0.5IN WIDE	P	39.370	IN	TEFLON	60-0.5IN WIDTH (More) - 317100943		
13	VW	00024309N (00024309N)		TUBE SHRINK 1/2 BLK	P	0.100	MR	RNF-100	RNF-100-1/2-0 (More)		
15	WO	99946677M (99946677M)		CABLE ELECT 2X12AWG UNSHLD UNJ	P	1.200	MR		M27500-12ML2U00 (More)		

UN CONTROLLED COPY
 CERTIFIED CORRECT COPY
 OF APPROVED DRAWINGS
 AT THIS DATE 15-12-2020

 Design & Drawing Office
 Ordnance Factory,
 Trichirappalli-620018

THIS DOCUMENT AND THE INFORMATION CONTAINED IN IT ARE PROPRIETARY AND CONFIDENTIAL TO OFT. NO PERSON OR ENTITY IS ALLOWED TO COPY, REPRINT, REPRODUCE OR PUBLISH ANY PART OF THIS DOCUMENT, NOR DISCLOSE ITS CONTENTS TO OTHERS, NOR MAKE ANY USE OF IT, NOR ALLOW OR ASSIST OTHERS TO MAKE ANY USE OF IT UNLESS BY THE PRIOR WRITTEN EXPRESS AUTHORIZATION OF OFT AND THEN ONLY TO THE EXTENT AUTHORIZED.
COPYRIGHT-OF.

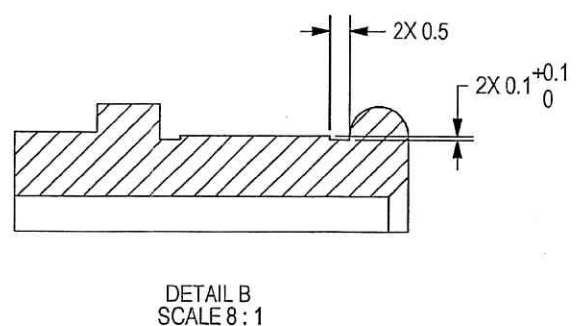
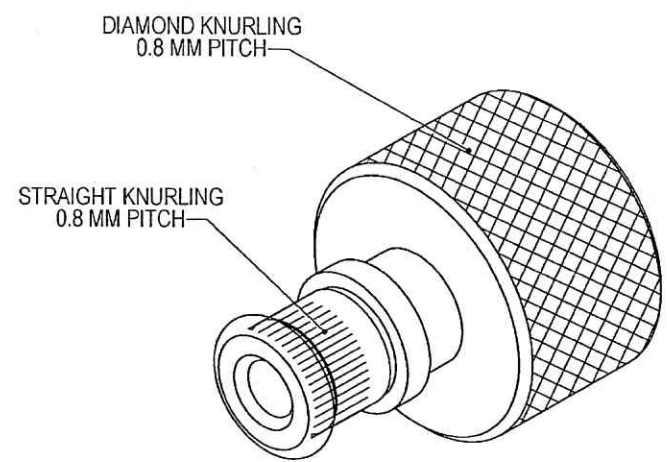
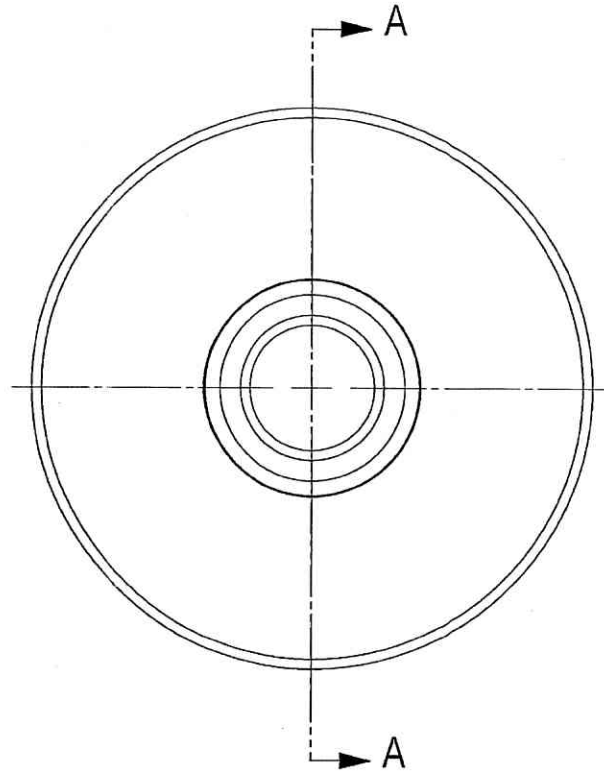
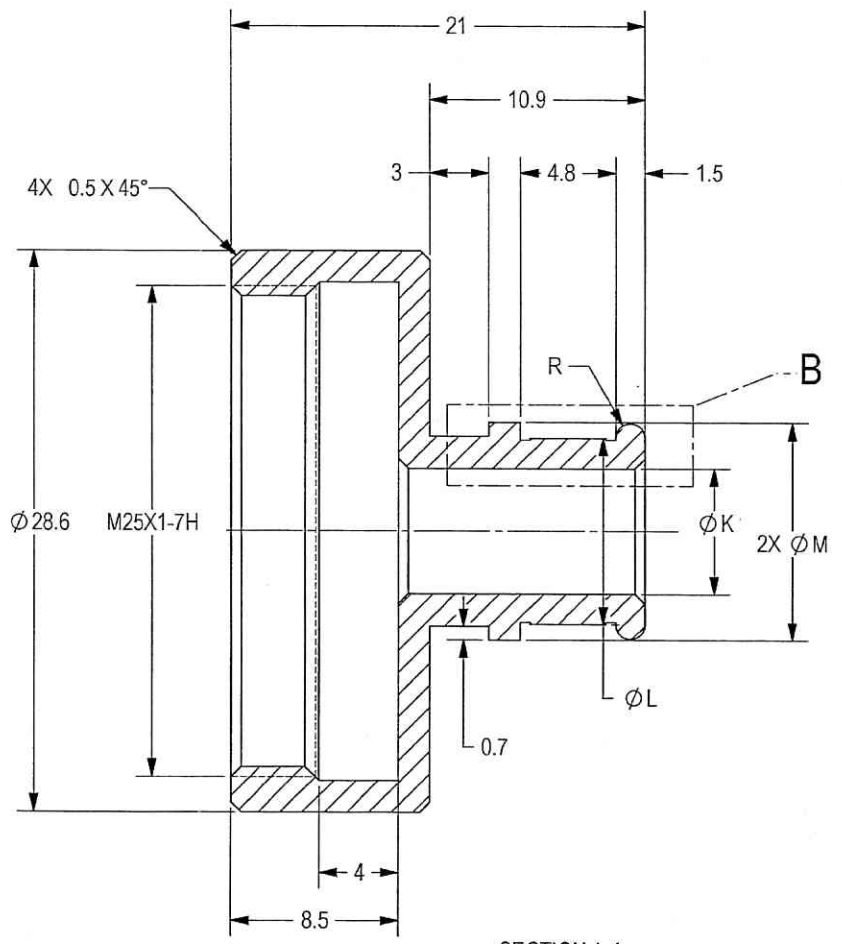
SHEET REV STATUS
ALL SHEETS ARE THE SAME REVISION

REV	ECO	DESCRIPTION	DATE	APVD
01		Freeze	08-Jul-09	M. Levin
-		Released	16-Feb-10	A. Ben-or
A-	VA103/00	Released	14-Feb-11	D. Nave

- NOTES:
- INTERPRET THIS DRAWING IAW ASME Y14.100M.
 - MATERIAL: ALUM. ROD 6061-T6 PER AMS-QQ-A-225/8.
 - UNLESS OTHERWISE SPECIFIED, UNDEFINED MACHINED FILLET MAX RADII SHALL BE 0.2.
 - DEBURR AND REMOVE SHARP EDGES, APPROX. 0.2X45 Deg.
 - FINISH:
 - ZINC COATING - OVER ELECTROLESS NICKEL.
 - ELECTROLESS NICKEL CLASS 3 GRADE B, 13 MICRON THICK PER MIL-C-26074.
 - ZINC COATING ELECTRODEPOSITED TYPE II, COLOR BLACK, CLASS 3 (OR SC2), 8 MICRON THICK PER ASTM B 633.
 - QUALITY ASSURANCE PROVISIONS FOR THIS ITEM PER RDMQD00012P.
 - PACKAGING AND PACKING:
THE FINISHED PART SHALL BE PRESERVED AND PACKAGED IN ACCORDANCE WITH MANUFACTURER'S COMMERCIAL PRACTICE.
 - IDENTIFY PER MIL-STD-130 PARA 4.1.B, BY LABELING ITS CONTAINER WITH THE PART NUMBER. CHARACTERS 3.2 MM HIGH.

UN CONTROLLED COPY
CERTIFIED CORRECT COPY
OF APPROVED DRAWINGS
AT THIS DATE: 15.12.2020

Design & Drawing Office
Ordnance Factory,
Tiruchirappalli-620018



PART NO.	INDENT NO.	K	L	M
031518E-00	D38999-III-17-02	6.4	9.5	11.1
031518E-01	D38999-III-17-03	9.5	12.7	14.3
031518E-02	D38999-III-17-04	12.7	15.9	17.4
031518E-03	D38999-III-17-05	15.9	19.1	20.6

125 ✓

SEE ATTACHED MEDIA

UNLESS OTHERWISE SPECIFIED DIMENSIONS ARE IN MM PER ASME Y14.5M-1994	DRAWN	SIGNATURE	DATE	ORDNANCE FACTORY TIRUCHIRAPPALLI FOR: CABLE ASSY, WPKS1 OF: 12.7MM SRCG
TOLERANCES LINEAR: ±0.2 ANGULAR: ±0.5°	CHECKED	HOS/DDO		
3rd ANGLE PROJECTION	OFFICER/PRODN	OFFICER/OC		
SURFACE TEXTURE IN Micro INCH	OFFICER/DDO	OFFICER/DDO		
TITLE		ADAPTER DRAWING, D38999-III-17		
SIZE	CAGE CODE	DWG NO		
C	S0123	031518E-TB		
SCALE 4:1	AUTOMATED DRAWING (SW)	SHEET 1 OF 1		