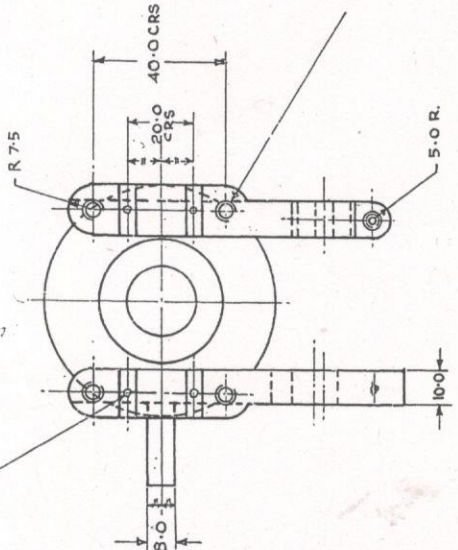
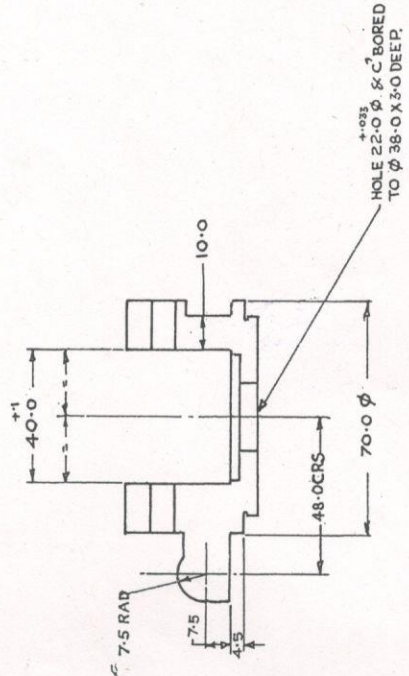


FOR EXPLANATION OF DIMENSIONING E.N.J. VEE WORKING DIMENSIONS ARE IN INCHES.
THIRD ANGLE PROJECTION

4-HOLES, 2.0 DIA X 3.0 DEEP TO BE MARKED OFF FROM IRDE 421/14

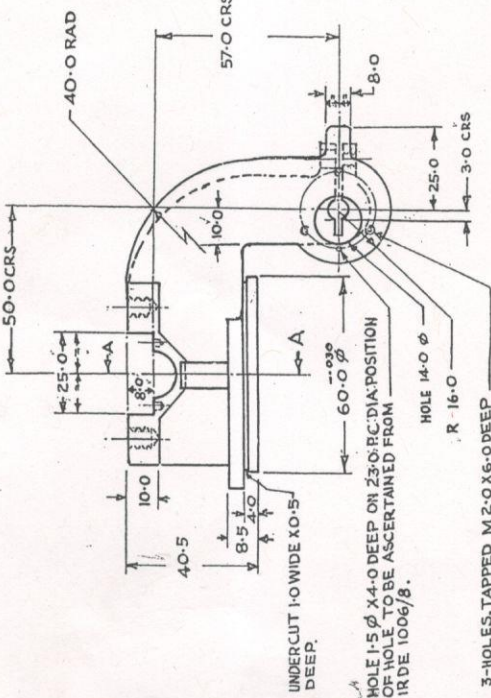
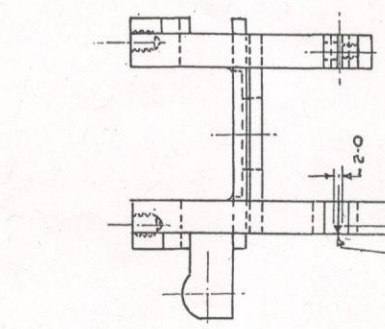
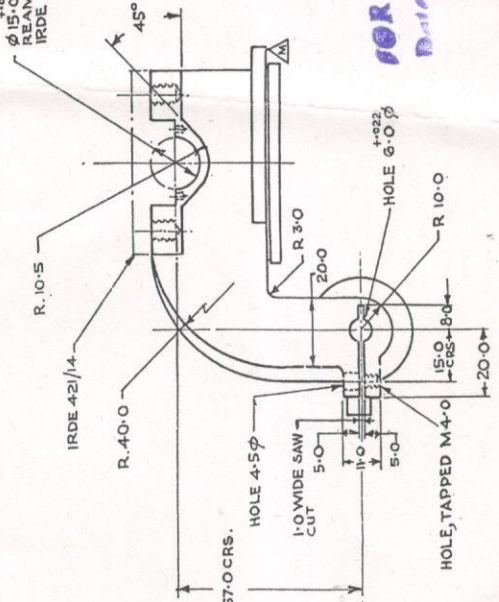


4-HOLES, TAPPED, M 6 X 8.0 DEEP.



SECTION AT 'AA'

Ø 15.0 (TO BE DRILLED AND REAMED FINALLY KEEPING IRDE 421/14 IN POSITION)



ARROW HEAD AND THE LINE TO BE ENGRAVED 2 DEEP, WELL DEFINED AND FILLED IN WITH WHITE.

3-HOLES, TAPPED M 2.0 X 6.0 DEEP EQUALLY SPACED ON 23.0 PC. DIA. AS SHOWN.

FOR TRADE COPY
Date of Issue 06.12.16

(D) D.C. 7046-L	MATL. AMENDED	REV	DATE	DRAWN	TRACED	APPROVED
(E) D.C. 7054-L	DRG No. AMENDED.	REV	DATE	SAJ	SAJ	FOR SAJ
(F) D.C. 7055-L	CAT/PART No. ADDED	REV	DATE	SAJ	SAJ	FOR CONTROLLER
(G) D.C. 7056-L	DESIGNED	REV	DATE	SAJ	SAJ	FOR DEPT. DUN.
(H) D.C. 7057-L	DWG. PROOF SHEET	REV	DATE	SAJ	SAJ	DATE: 4.8.72
AMENDMENTS			SIG	DATE	DRG No.	
MATERIAL: SEE ABOVE					CQA(I) 796/5	
FINISH: SEE ABOVE					CAT/PART No.	12.40-000719
BEARING, SLEEVE, SPECIAL, BOTTOM					SHEETS	SHEET.

MATL:-- STEEL 340-570 N IS 1030-1988

FINISH:-- TO BE PAINTED WITH LATEST APPROVED SERVICE COLOUR EXCEPT BEARING SURFACES

MCR-2900
8137
8138