

**RESEARCH AND DEVELOPMENT ESTABLISHMENT
(ENGINEERS) POONA**

SCHEDULE OF DRAWINGS, MATERIALS & STANDARD PARTS

**COMPRESSOR AIR FOR FLOATS
(ENGINE DRIVEN)**

PAGE 1 TO 3 SCHEDULE OF DRAWINGS (TOTAL NO. OF DRGS. 49)

PAGE 4 TO 10 SCHEDULE OF MATERIALS

PAGE 11 TO 13 SCHEDULE OF STANDARD PARTS

TOTAL No. OF PAGES 14

ES/W2/24 24-10-78	Ⓧ DRG. CONVERTED INTO SI UNIT DRG. NO. ADVANCED TO/D 8/3/79 550 II ACIE (DRG.)
----------------------	--

COMPILED BY	TCD <i>Ansarnale</i>
-------------	----------------------

CKD <i>Rohin Kar</i> <i>Asmole</i> C'D/MAN	S.L.	PSD <i>Deedar</i> J.S.O 5.6.71 PROJ. OFFR.
---	------	--

APPROVED	<i>Deedar</i> LT. COL. ASST. DIRECTOR
----------	---

ORIGINAL DATE	
---------------	--

EGA - 164/B
(SHEET 1 OF 2 SHEETS)

AMENDMENTS

D. C. (I)	NATURE
RDEE/0036 26-11-70	PROVISIONALLY SEALED. <i>Halber</i> LT. COL. A. D. E. S. M.
RDEE/0048 29-6-71	Ⓐ AMENDMENTS TO DRGS & MATERIALS INCORPORATED ACCORDINGLY. DRG. No. ADVANCED TO /A <i>Deedar</i> LT. COL. A. D. E. S. M. I 28.4.72
RDEE/0076 13-10-72	Ⓑ AMENDMENTS TO DRGS & MATERIALS INCORPORATED ACCORDINGLY DRG. NO. ADVANCED TO/B DRG. SEALED <i>Deedar</i> LT. COL. AD E&M-I 23/11/72
ES/W3/10 DT. 19-3-74	Ⓒ AMENDMENTS TO DRGS & MATERIALS INCORPORATED ACCORDINGLY. DRG. ADVANCED TO/C <i>Halber</i> 24/11/76 MAJ.

R D E (ENGRS) DRG. No.

EGA - 164/B

(SHEET 1 OF 2 SHEETS)

(METRIC)

A	B	C	D				
--------------	--------------	--------------	---	--	--	--	--

INKED BY: *Deedar*

CONVTD BY: *Asmole*

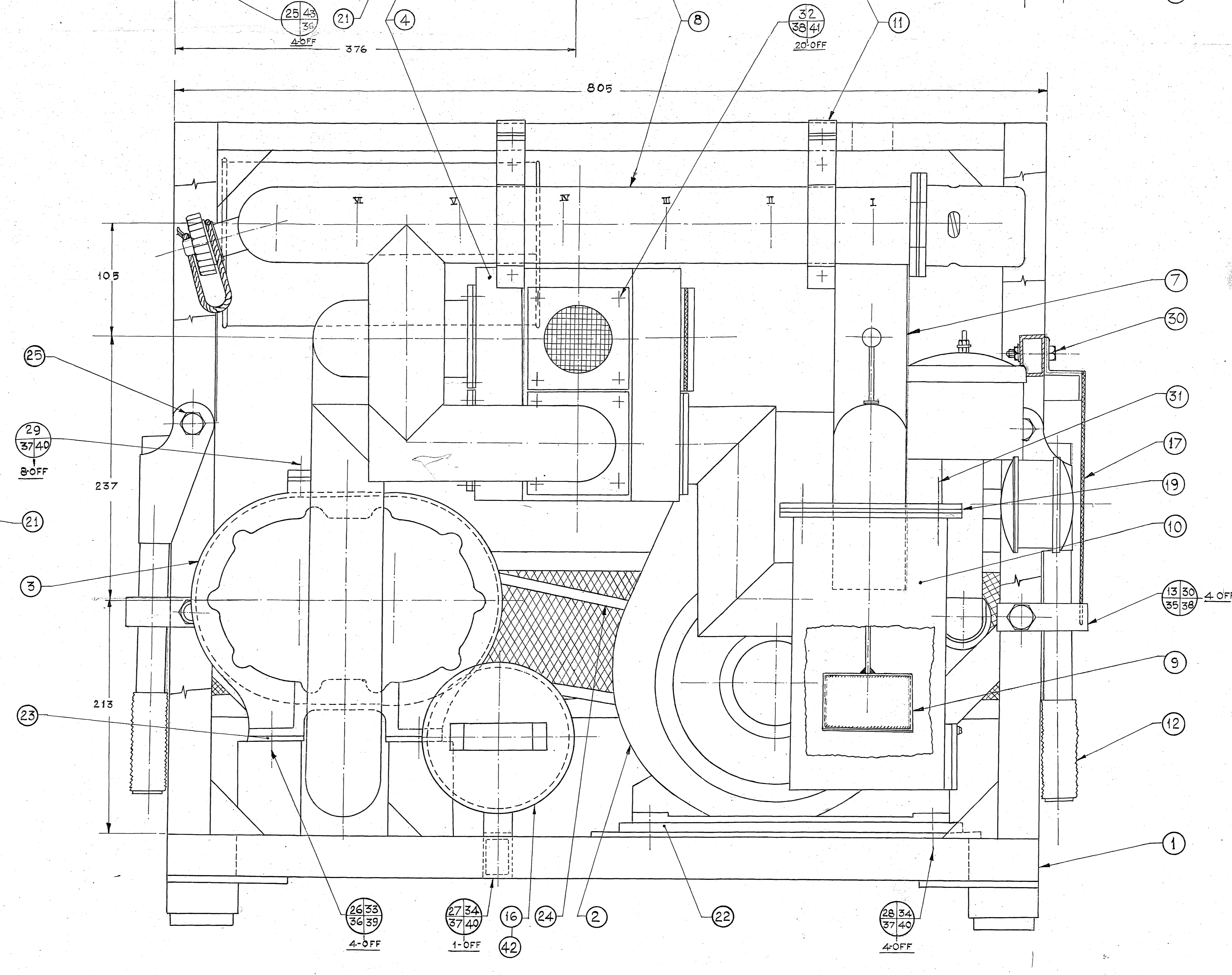
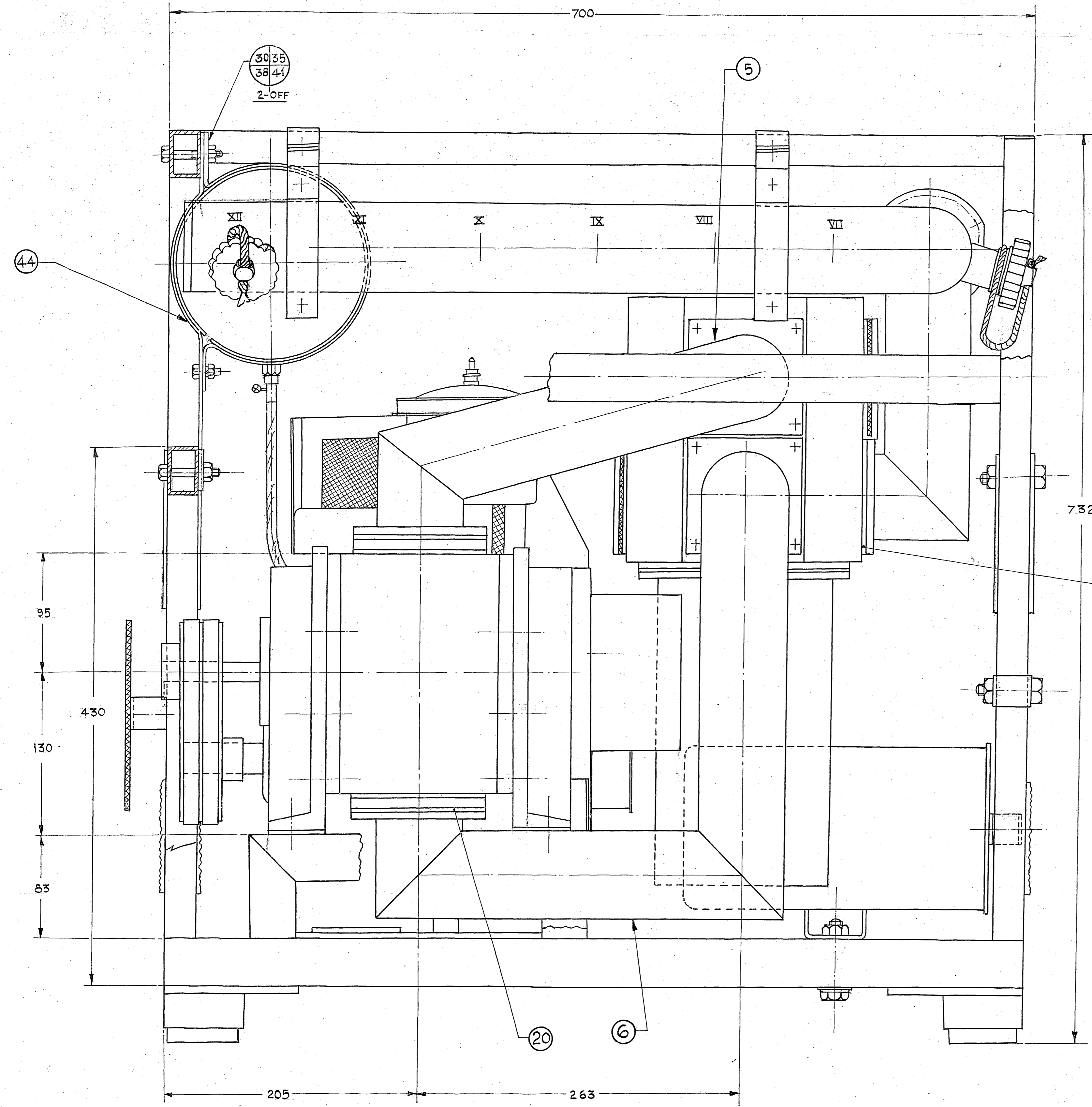
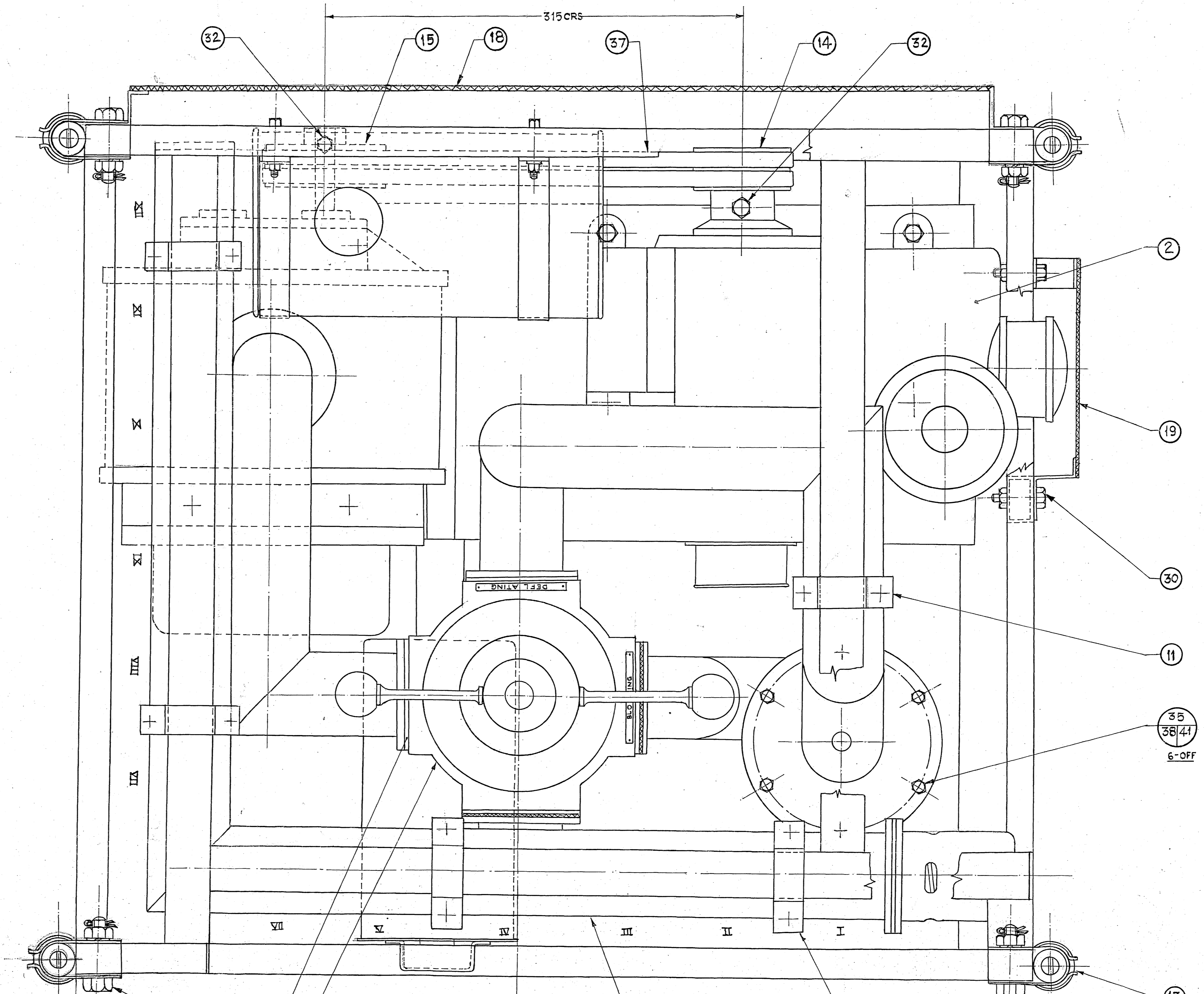
CKD BY: *Asmole*

C D/MAN: *Asmole*

445

51

PART LIST		AMENDMENTS			
ITEM NO	DRG/PART NO	NO TO ASSET	NOMENCLATURE	DCD	NATURE
1	EPD-4624/A	1	CRADLE	PROVISIONALLY	
2	EPD-4624/A	1	ENGINE W/BLANK SHAFT	SEALED	
3	EPD-4624/A	1	BLOWER MOTOR	DRG SEALED	
4	ESA-465/A	1	CHANGE OVER MECHANISM ASSEMBLY	LT-COL	
5	EPD-4624/A	1	PIPE CONNECTION NO 5	A-D-E&M	
6	EPD-4624/A	1	PIPE CONNECTION NO 7		
7	EPD-4624/A	1	PIPE CONNECTION NO 7		
8	ESA-466/A	1	DISTRIBUTOR ASSEMBLY		
9	EPD-4624/A	1	FLOATER		
10	EPD-4624/A	1	TRAP WATER		
11	EPD-4624/A	5	CLAMP DISTRIBUTOR		
12	EPD-4624/A	4	HANDLE CARRYING		
13	EPD-4624/A	4	CLAMP HANDLE CARRYING		
14	EPD-4624/A	4	PULLEY ENGINE		
15	EPD-4624/A	1	PULLEY BLOWER 'A/B/C'		
16	EPD-4624/A	1	TOOL BOX		
17	EPD-4624/A	1	GUARD SMALL		
18	EPD-4624/A	1	GUARD LARGE		
19	EPD-4624/A	1	GASKET FOR TRAP WATER		
20	EPD-4624/A	1	GASKET FOR BLOWER		
21	EPD-4606	5	GASKET FOR CHANGEOVER MECHANISM		
22		1	PADANTIVIBRATION RESISTOR FLEXIBK 40X820		
23		4	PARANTIVIBRATION RESISTOR FLEXIBK 85X855		
24		2	ADANTIVIBRATION BELT PULNER INDUSTRIAL A35.A36		
25		4	HEX BOLT M12 X 80 IS 15 63		
26		4	HEX BOLT M12 X 40 "		
27		1	HEX BOLT M10 X 55 "		
28		2	HEX BOLT M10 X 40 "		
29		16	HEX SCREW M10 X 18 "		
30		9	HEX BOLT M6 X 45 "		
31		6	HEX BOLT M6 X 25 "		
32		22	HEX SCREW M6 X 20 "		
33		4	HEX NUT NYLON M12 "		
34		5	HEX NUT NYLON M10 "		
35		15	HEX NUT NYLON M6 "		
36		5	SPRING WASHER M12 A IS 3063		
37		13	SPRING WASHER M10 A "		
38		35	SPRING WASHER M6 A "		
39		4	PUNCHED WASHER M12 IS 2016		
40		13	PUNCHED WASHER M10 "		
41		31	PUNCHED WASHER M6 "		
42		1	TOOL BAG WITH TOOLS		
43		4	SPLIT PIN 3-19 X 20 LG		
44		4	CLAMP ASSEMBLY FUEL TANK		



NOTE:-
BOLTS WHERE APPROACH FOR SPANNERS IS
DIFFICULT SHALL HAVE SCREW SLOTS.

GENERAL ARRANGEMENT,
COMPRESSOR, ROTARY, POWER DRIVEN
220m³/h AT 9.8 k Pa, CRADLE
MOUNTED ENGINE DRIVEN.

MATERIAL	MACHINING	TREATMENT	FINISH
AS STATED			
ALL THREADS TO CONFORM TO SPECIFICATION.	SCALE - 1:2	DRG. NOT TO BE SCALED.	PERTAINS TO
ALL SHARP EDGES & CORNERS TO BE ROUNDED OFF.	THIRD ANGLE PROJECTION.	ORIGINAL DATE - 15-5-71	
STAMP PART NO MANUFACTURERS NAME & YEAR OF MANUFACTURE. TOLERANCE ON MACHINED DIMENSIONS UNLESS OTHERWISE SPECIFIED.	GENERAL DECIMAL	ANGULAR	
DRN.	Sd. TCD.	Sd. C.D.	
CKD.	Sd. PSD.	Sd. PROJ-OFFR.	
APPROVED.	ASS. DIRECTOR	LT COL	

RESEARCH & DEVELOPMENT ESTABLISHMENT (ENGR)

GENERAL ARRANGEMENT
COMPRESSOR AIR FOR FLOATS
RDE (ENGINEERS) DRG. NO.
EGA-164
(SHEET 2 OF 2 SHEETS) (METRIC)

SCHEDULE OF MATERIALS

SEC.	DESIGNATION	SPECN.	CAT/PART No.	SIZE	QTY	WT. kg. PER PIECE	TOTAL WT. kg.	USED ON	REMARKS	
T U B I N G	AL. ALLOY, 76 OD.X3THK			210 LG.	1- OFF	0.37	0.37	EPD-4625/	C	
				158 LG.	1- OFF	0.28	0.28	EPD-4625/	C	
				84 LG.	1- OFF	0.15	0.15	" - "		
		AL. 63.5 x 3.18 THK		INDAL No. 9525	30 LG.	4-OFF	0.037	0.148	EPD-4596/	C
	A	AL. ALLOY, 76 OD.X 3 THK			625 LG.	1- OFF	1.113	1.113	EPD-4612/	B
					632 LG.	1- OFF	1.125	1.125	" - "	
					200 LG.	1- OFF	0.356	0.356	" - "	
					193 LG.	1- OFF	0.343	0.343	" - "	
					83 LG.	1- OFF	0.147	0.147	" - "	
					376 LG.	1- OFF	0.67	0.67	" - 4610/	B
				333 LG.	1- OFF	0.59	0.59	" - "		
				150 LG.	1- OFF	0.27	0.27	" - "		
				85 LG.	1- OFF	0.15	0.15	" - "		
	AL. RECT. 63.5 x 38.1 x 3.05 THK.		INDAL No. 9414	650 LG.	2- OFF	1.046	2.093	EPD-4596/	C	
	" " 38.1 x 25.4 x 2.4 THK.		INDAL No. 9412 OR HINDALCO TU - 175	799 LG.	2- OFF	0.626	1.253	EPD-4596/	C	
				729 LG.	3- OFF	0.571	1.714	" - "		
				687 LG.	1- OFF	0.538	0.538	" - "		
				650 LG.	3- OFF	0.510	1.530	" - "		
				644 LG.	4- OFF	0.505	2.020	" - "		
			A	566 LG.	1- OFF	0.464	0.464	" - "		
				430 LG.	2- OFF	0.337	0.674	" - "		
			A	336 LG.	1- OFF	0.229	0.229	" - "		
				272 LG.	2- OFF	0.213	0.426	" - "		
				254 LG.	1- OFF	0.199	0.199	" - "		
				74 LG.	1- OFF	0.058	0.058	" - "		
			A	46 LG.	1- OFF	0.015	0.015	" - "		

SCHEDULE OF STANDARD PARTS

SEC.	DESIGNATION	SPECN	CAT/PART No.	SIZE	QTY.	WT. Kg. PER PIECN	TOTAL WT. Kg.	USED ON	REMARKS
BEARING	THRUST, 15x20x9 B.C.I.-51102				1-OFF			ESA-465/D	
	THRUST, 52-0.0X12THK. B.C.I.-51107				1-OFF			ESA-465/D	
BOLT	HEX, HD, STEEL, M-6	IS.1363		20 LG	12-OFF			ESA-465/D	
	HEX, HD, STEEL, M-12			50 LG	4-OFF			EGA-164/D	
	HEX. HD, STEEL, M12			40 LG	4-OFF			" "	
	HEX HD, STEEL, M10			55 LG	1-OFF				
	HEX, HD, STEEL, M10			40 LG	4-OFF				
	HEX, HD, STEEL, M10			15 LG	8-OFF				
	HEX, HD, STEEL, M6			40 LG	9-OFF				
	HEX, HD, STEEL, M6			25 LG	6-OFF				
	HEX HD STEEL M12			20 LG	6-OFF			EPD-4640/B	
GUAGE CHAIN	ALUMINIUM, LT. WT.			150 LG	1-OFF			EPD-4632/A	
GUAGE	AIR PRESSURE, BOURDEN TUBE TYPE				1-OFF			ESA-466/B	
KEY	PARALLEL, STEEL, 6x6x20				2-OFF			ESA-465/D	
	5x5x20				1-OFF			ESA-465/D	
	4x4x20				1-OFF			ESA-465/D	
PIN	SPLIT, STEEL 3-15Ø			20-LG	4-OFF			EGA-164/D	
NUT	HEX. STEEL, M-6				20-OFF			EPD-4626/B	
	HEX. STEEL, M-4				6-OFF			ESA-466/C	
	LOCK NUT, HEX. STL. M-6				20-OFF			EPD-4626/B	

Ⓐ

Ⓐ

SCHEDULE OF DRAWINGS

DRG. No.	NOMENCLATURE	No. OFF PER G.A.	USED ON PER S.A.	REMARKS
EGA-164 (SHEET 1 OF 2 SHEETS)	SCHEDULE OF DRAWING MATERIAL AND STANDARD PARTS, AIR COMPRESSOR FOR FLOATS.			
EGA-164 (SHEET 2 OF 2 SHEETS)	GENERAL ARRANGEMENT, AIR COMPRESSOR FOR FLOATS.			
EPD-4596	CRADLE.	1		
	ENGINE VILLIERS MARK 25 HSP.	1		
	BLOWER MODEL OHP 635.	1		
ESA-465	CHANGEOVER MECHANISM ASSLY.	1		
EPD-4597	BODY.		1	
EPD-4598	SHAFT, MAIN.		1	
EPD-4599	SHAFT, HOLLOW.		1	
EPD-4600	PISTON.		2	CANCELLED
EPD-4601	COVER, BODY.		1	
EPD-4602	COLLAR, LARGE.		1	
EPD-4603	COLLAR, SMALL.		1	
EPD-4604	COVER, SHAFT.		1	
EPD-4605	HANDLE WITH KNOB.		2	
EPD-4606	GASKET FOR CHANGEOVER MECHANISM.		3	
EPD-4607	COVER, PLATE.		1	
EPD-4608	SCREW, LOCKING.		4	
EPD-4609	PIPE CONNECTION - No. 5.	1		
EPD-4610	" " - No. 6.	1		
EPD-4611	" " - No. 7.	1		
EPD-5179	PISTON UPPER		1	
EPD-5180	" " LOWER		1	

SCHEDULE OF STANDARD PARTS

SEC.	DESIGNATION	SPECN	CAT/PART NO.	SIZE	QTY.	WT. Kg. PER PIECE	TOTAL WT. Kg.	USED ON	REMARKS
A NUT	HEX, NYLOCK, M12				4-OFF			EGA-164/D	
	HEX, NYLOCK, M10				5-OFF			" "	
	HEX, NYLOCK, M6				15-OFF			" "	
	HEX HD STEEL				18-OFF			EPD-4640/B	
RIVET	RD. HD. AL. - 3φ				2-OFF			EPD-4627	
	RD. HD. AL. - 3φ			10 LG	4-OFF			EPD-4635/A	
	RD. HD. AL. - 3φ			5 LG	10-OFF			EPD-4632/A	
	FLAT HD., AL. - 3φ			10 LG	8-OFF			EPD-4636/A	
	AL. RD. HD., - 1.6φ			5 LG	4-OFF			EPD-4597/A	
BALL	STEEL, 9.5φ			9.5φ	2-OFF			EPD-4602/B 4603/B	
A SCREW	GRUB, STEEL SLOTTED C'M-6			10 LG	2-OFF			ESA-465/D	
	GRUB, SLOTTED C, M5			10 LG	1-OFF			ESA-466/B	
	RD. HD, STEEL, M-3			8 LG	2-OFF			EPD-4625/C	
	RD. HD, STEEL M-6			20 LG	20-OFF			EPD-4626/B	
	C'SK HD. STEEL M-8			30 LG	4-OFF			EPD-4628/A	
	" HD, " M-4			20 LG	6-OFF			ESA-466/B	
	HEX HD, " M-5			10 LG	1-OFF			ESA-466/B	CANCELLED
	HEX, HD, " M-6			20 LG	22-OFF			EGA-164/D	
	C'SK HD STEEL M6			35 LG	18-OFF			EPD-4640/B	
WASHER	PLAIN, STEEL, 3φ				2-OFF			EPD-4625/C	
	PLAIN, STEEL, 6φ				16-OFF			EPD-4625/C	
	CUP, STEEL, G10				4-OFF			EPD-4640/B	
	SPRING, STEEL, M6				4-OFF			EPD-4626/B	
	PLAIN, STEEL, M6				4-OFF			" "	
	SPRING, STEEL, M4				6-OFF			ESA-466/B	

SCHEDULE OF STANDARD PARTS

SEC.	DESIGNATION	SPECN	CAT/PART NO	SIZE	QTY.	WT. Kg. PER PIECE	TOTAL WT. Kg.	USED ON	REMARKS.
WASHER	SPRING, STEEL, M-12				8-OFF			EGA-164/D	
	SPRING, STEEL, M-10				13-OFF			" "	
	SPRING, STEEL, M-6				35-OFF			" "	
	PUNCHED, M-10				13-OFF			" "	
	PUNCHED, M-6				31-OFF			" "	
	" "					18-OFF			EPD-4640/B
BELT	V FENNER, INDUSTRIAL A35, A36				4(2 EACH)				
WOOD SCREW	SLOTTED C'SK HD STEEL } G10			35 LG	32-OFF			EPD-4640/B	
				20 LG	122-OFF			" "	
				15 LG	220-OFF			" "	
FELT	WOOLEN 6 THK.				0.3 SQ.M			EPD-4640/B	
WING NUT	STEEL MILD M12				6-OFF			EPD-4640/B	
ROPE	NYLON 10φ			570 LG	4-OFF			EPD-4640/B	
TOOL BOX	PLIER, INSULATED			150 LG.	1-OFF			EPD-4698/B	
	SCREW DRIVER			100 LG.	1-OFF			" "	
	TONG SPANNER, LARGE				1 "			" 4699/A	TO BE FABRICATED
	SPANNER, DOUBLE ENDED 10-11				" "			" 4698/A	
	SPANNER, DOUBLE ENDED 14-15				" "			" "	
	" " " 16-17				" "			" "	
	" " " 20-22				" "			" "	
	TONG SPANNER, SMALL				" "			" 4700/B	TO BE FABRICATED.
SPARK PLUG SPANNER		D 2497		" "			" 4698/B	FOR VILLIERS MK 25 HSP ENGINE.	

SCHEDULE OF DRAWINGS

DRG.No.	NOMENCLATURE	No. OFF PER G.A.	USED ON PER S.A.	REMARKS
✓ ESA-466	DISTRIBUTOR ASSLY.	1		
✓ EPD-4612	DISTRIBUTOR BODY.		1	
✓ EPD-4613	SOCKET.		12	
✓ EPD-4614	BRING, RUBBER.		12	
✓ EPD-4554	RUBBER, SEAL. <i>See EGA-161</i>		12	
✓ EPD-4616	SOCKET CAP.		12	
✓ EPD-4617	RUBBER PACKING, VALVE.		1	
✓ EPD-4618	BODY, SAFETY VALVE.		1	
✓ EPD-4619	SEAT, SPRING MAIN.		1	
✓ EPD-4620	SPRING, MAIN.		1	
✓ EPD-4621	SPRING, AUXILIARY.		1	
✓ EPD-4622	SPACER.		1	
✓ EPD-4623	VALVE CAP. ✓		1	
✓ EPD-4624	FLOATER.	1		
✓ EPD-4625	TRAP, WATER.	1		
✓ EPD-4626	CLAMP, DISTRIBUTOR.	5		
✓ EPD-4627	TANK PUMP, VIBRATOR, <i>...</i>	1		
✓ EPD-4627	CLAMP ASSEMBLY, TANK, FUEL.	2		
✓ EPD-4628	HANDLE, CARRYING.	4		
✓ EPD-4629	CLAMP, HANDLE, CARRYING.	4		
✓ EPD-4630	PULLEY, ENGINE.	1		
✓ EPD-4631	PULLEY, BLOWER. 'A' 'B' 'C'	(ONE EACH)		
✓ EPD-4632	TOOL BOX.	1		
✓ EPD-4633	GASKET FOR TRAP WATER.	1		
✓ EPD-4634	GASKET FOR BLOWER.	2		
✓ EPD-4606	GASKET FOR CHANGEOVER MECHANISM.	5		
✓ EPD-4635	GUARD, LARGE.	1		

SCHEDULE OF MATERIALS

SEC.	DESIGNATION	SPECN	CAT/PART NO.	SIZE	QTY.	WT. Kg. PER PIECE	TOTAL WT Kg.	USED ON	REMARKS
CASTING	ALUMINIUM, AL. (LM-6)				1- OFF	1.54	1.54	EPD - 5179/	A
	ALUMINIUM ALLOY (LM-6)				1- OFF	2.17	2.17	EPD - 4597/	A
	ALUMINIUM ALLOY (LM-6)				3- OFF	0.904	2.712	EPD - 4631/	D
	ALUMINIUM ALLOY (LM-6)				1- OFF	0.57	0.57	EPD - 4630/	D
	ALUMINIUM ALLOY (LM-6)				1- OFF	1.54	1.54	EPD - 5180/	A
	BRASS				12- OFF	0.221	2.652	EPD - 4613/	B
	BRASS				12- OFF	0.69	8.28	EPD - 4616/	C
	BRASS				1- OFF	0.57	0.57	EPD - 4604/	
CHANNEL	ALUMINIUM ALLOY 50.8 x 25.4 x 4.7 THK.		INDAL No. 2202	27 LG.	1- OFF	0.032	0.032	EPD - 4632/	A
	AL. 50 x 25 x 6			4.44 LG.	2- OFF	0.728	1.457	EPD - 4596/	A
	AL. 76.2 x 38.1 x 3.96 THK		INDAL No. 2305	679 LG.	2- OFF	1.315	2.630	EPD - 4596/	C
CORDAGE	CORDAGE, COTTON 3 Ø			250 LG.	12- OFF			ESA - 466/	B
EBONETE	ROUND, 32 Ø			32- LG	2- OFF			EPD - 4605/	B
	ROUND 15 Ø			15- LG	1- OFF			EPD - 4624/	B
EXPANDED METAL	STEEL, MILD, 13x50, 1.6 THK.			132 x 712	1- OFF			EPD - 4635/	A
				162 x 216	1- OFF			EPD - 4636/	A

Ⓐ

Ⓑ

SCHEDULE OF MATERIALS

SEC.	DESIGNATION	SPECN	CAT/PART NO	SIZE	QTY.	WT. Kg. PER PIECE	TOTAL WT. Kg.	USED ON	REMARKS
FILLER ROD	STEEL, MILD, 3 Ø				0.25 m			EPD-4626/	B
	" " 3 Ø				1 m			EPD-4628/	A
	" " "				0.8 m			EPD-4640/	B
FLAT	AL. ALLOY, 20 x 3			390 LG.	1- OFF	0.065	0.065	EPD-4632/	A
	AL. ALLOY, 25 x 3			38 LG.	10- OFF	0.008	0.08	" - 4596/	C
	STEEL, MILD, 40 x 5			985 LG.	2- OFF	1.57	3.14	EPD-4640/	B
	" " "			167 LG.	2- OFF	0.27	0.54	" "	
LEATHER	" " 7.5 x 10.5			710 LG.	6- OFF	0.17	1.02	ESA-465	
	" " 7.5 x 20			496 LG.	2- OFF			ESA-465/D	
	" " 7.5 x 20			496 LG.	1- OFF			ESA-465/D	
PLATE	AL-ALLOY, 6 THK.			180 x 180	2- OFF	0.478	0.956	EPD-4611/	B
	" " "			180 x 180	1- OFF	0.146	0.146	EPD-4611/	B
	" " "			120 x 120	2- OFF	0.200	0.400	EPD-4609/	B
	" " "			110 x 110	1- OFF	0.146	0.146	EPD-4611/	B
	" " "			97 x 97	1- OFF	0.155	0.155	EPD-4612/	B
	" " "			110 x 110	1- OFF	0.146	0.146	EPD-4611/	B
	" " "			94 x 94	6- OFF	0.146	0.876	EPD-4607, 4609, 4610, 4611, 4612, 4625	
	" " "			94 x 94	1- OFF	0.146	0.146	EPD-4611/	B
	" " "			70 x 70	2- OFF	0.96	1.92	EPD-4612/	B
	" " "			38 x 52	1- OFF	0.015	0.015	EPD-4625/	C
	AL. ALLOY, 4.8 THK			278 x 360	1- OFF	1.324	1.324	EPD-4596/	C
	" " 4.88			110 x 110	2- OFF	0.160	0.320	" - 4596/	
	" " 4.88			50 x 50	3- OFF	0.033	0.099	" - 4596/	
	AL. ALLOY, 3 THK			278 x 360	1- OFF	1.324	1.324	EPD-4596/	
" " 3 THK			25 x 25	10- OFF	0.046	0.46	EPD-4596/		

(A)
(A)
(A)

SCHEDULE OF MATERIALS

SEC.	DESIGNATION	SPECN	CAT/PART NO	SIZE	QTY.	WT. Kg PER PIECE	TOTAL WT. Kg	USED ON	REMARKS.
① RUBBER	HARD, 3 THK			38 x 54	1- OFF			EPD-4625/	
	SHEET, HARD, 1.5 THK			84 x 84	2- OFF			EPD-4624/B	
	ROUND, HARD, 30 Ø			12 LG.	4- OFF	0.011	0.044	EPD- 4628/	A
	HOSE, GRIP, 25 I.D.			90 LG.	4- OFF			EPD- 4628/	A
	CANVAS, IMPREGNATED 3THK			97 x 97	1- OFF			EPD - 4617/	A
	" " 3 THK			120 x 120	2- OFF			EPD- 4634/	B
	" " "			180 x 180	1- OFF			EPD - 4633/	B
				94 x 94	5- OFF 3- OFF			EPD - 4606/11 EGA - 164/15	
② SHEETS	STEEL, MILD, 5 THK.			25 x 25	4-OFF	0.01	0.04	EPD - 4628/	A
	" " 2 THK			150 x 130	4-OFF	0.031	0.124	EPD - 4628/	A
				25 x 120	1-OFF	0.05	0.05	EPD - 4626/	B
				24 x 24	4-OFF	0.01	0.04	EPD - 4628/	A
	STEEL, MILD 1.6 THK			25 x 305	2- OFF	0.097	0.194	EPD - 4605/	B
	" " "			25 x 263	2- OFF	0.082	0.164	" - "	
	" " "			65 x 902	2- OFF	0.07	0.14	EPD - 4640/	B
	" " "			65 x 772	2- OFF	0.06	0.12	" - "	
	" " "			65 x 724	4 - OFF	0.05	0.10	" " "	
STEEL, MILD, 1 THK			49 x 264	1- OFF	0.1	0.1	EPD - 4624/	B	
" " 0.996(20B.G.)			84 x 84	2- OFF	0.055	0.11	EPD - 4624/	B	

2016

SCHEDULE OF MATERIALS

SEC.	DESIGNATION	SPECN	CAT/PART NO	SIZE	QTY.	WT. Kg PER PIECE	TOTAL WT. Kg.	USED ON	REMARKS
SHEETS	SPRING, STEEL, 2 THK CRCA			25 x 218	4-OFF	0.086	0.34	EPD-4629/	B
				25 x 238	2-OFF	0.09	0.18	" - 4626/	B
	AL. ALLOY, 3.25 THK " " 3 " " " " 2 " " " " 1-6 " "			25 x 25	1-OFF	0.05	0.05	EPD-4638	
				25 x 140	1-OFF	0.03	0.03	EPD-4632/	A
				144 x 144	1-OFF	0.171	0.171	EPD-4625/	C
				249 x 452	1-OFF	0.62	0.62	EPD-4625/	C
				40 x 1760	1-OFF	0.31	0.31	EPD-4635/	A
				250 x 405	1-OFF	0.44	0.44	EPD-4632	A
				137 x 137	1-OFF	0.10	0.10	" "	
				128 x 128	1-OFF	0.07	0.07	" "	
				40 x 826	1-OFF	0.15	0.15	EPD-4636/	A
				15 x 157	1-OFF	0.018	0.018	" "	
				25 x 85	3-OFF	0.19	0.57	" "	
				8 x 75	2-OFF	.	.	EPD-4597/	A
		TUBING	AL. ALLOY, 70 O.D. x 3 THK			336 LG	1-OFF	0.60	0.60
				150 LG.	1-OFF	0.27	0.27	" - " "	
				82 LG.	1-OFF	0.14	0.14	" - " "	
				337 LG.	1-OFF	0.60	0.60	" - 4611/	B
				245 LG.	1-OFF	0.44	0.44	" - " "	
				232 LG.	1-OFF	0.41	0.41	" - " "	
				175 LG.	2-OFF	0.31	0.62	" - " "	
				145 LG.	2-OFF	0.25	0.50	" - " "	
				140 LG.	1-OFF	0.25	0.25	" - " "	

SCHEDULE OF MATERIALS

SEC.	DESIGNATION	SPECN	CAT/PART NO.	SIZE	QTY.	WT. Kg PER PIECE	TOTAL WT. Kg.	USED ON	REMARKS.
TUBING	E.R.W. STEEL, MILD, 125-4 O.D. X 1.6 THK.			303 LG.	4-OFF	0.28	1.12	EPD-4628	A
WELDING ROD	ALUMINIUM 3 Ø				3 m	41.6M		EPD-4625	C
	- " - 3 Ø				3.2 m			" - 4612	B
	- " - 3 Ø				1.2 m			" - 4610	B
	- " - 3 Ø				1m			" - 4609	B
	- " - 3 Ø				0.4 m			" - 4635	A
	- " - 3 Ø				1.4 m			" - 4632	A
	- " - 3 Ø				0.4 m			" - 4636	A
	- " - 3 Ø				5 m			" - 4611	B
	- " - 3 Ø				26 m			" - 4596	C
	STEEL 3 Ø				1.0 m			EPD ⁵⁴⁶⁴⁰ ₄₆₀₉ 4700	A
WIRE	SPRING, STEEL, 2 Ø			1020 LG.	1- OFF	0.02	0.02	EPD 4621	B
	" " 1 Ø			110 LG	2- OFF			EPD ⁴⁶⁰² ₄₆₀₃	
	SPRING, STEEL, 4 Ø			820 - LG	1- OFF	0.18	0.18	EPD-4620	B
	STEEL, MILD, 4 Ø			310 LG.	1- OFF	0.3	0.3	EPD-4624	B
WIRE, MESH	GALV., 3X3, 1 Ø WIRE			90x90	3- OFF			ESA-465	D

(A)

516