

DRG. PROVISIONAL

CARRYING HANDLE WELD ASSY.
44 P 11100*

HANDLE FORMING
44 P 11103*

HANDLE MOUNTING PLATE
44 P 11101*

PIVOT PLATE
44 P 11005*

WASHER
44 P 11106

BUSH
44 P 11107*

INDEX PLATE
44 P 11102*

INDEX PIN
44 P 11002*

PIVOT INDEX PLATE
44 P 11004*2

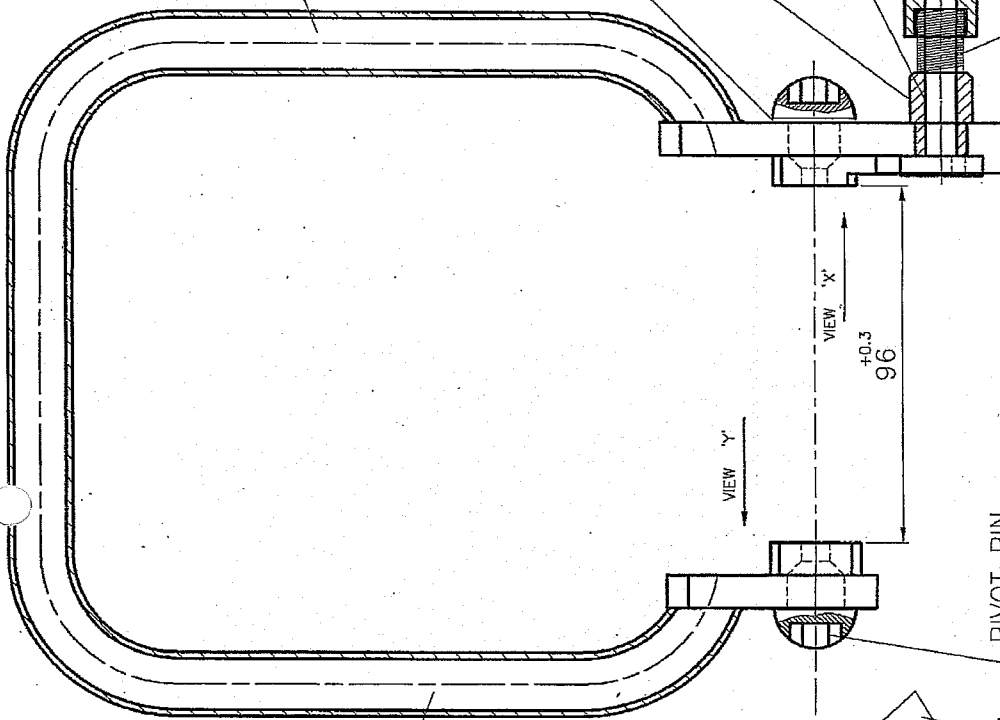
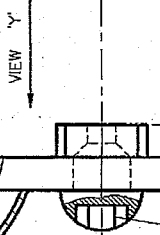
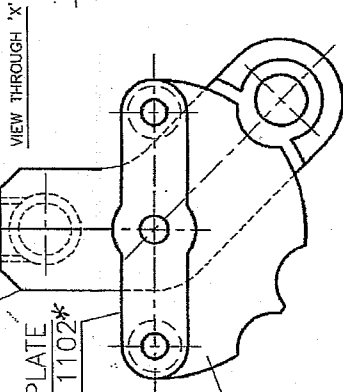
KNOB
44 P 11003*

SPRING PIN
44 P 11105

INDEX SPRING
44 P 11006*2

PIVOT PIN
44 P 11001*
QTY: 2

C'SK SOC. HD. CAP SCREW
M5 X 8 LG.
44 P 11104*
QTY: 4 Nos.



UN CONTROLLED COPY

UN CONTROLLED COPY
DIMENSIONS ARE IN mm.
UN TOLERATED DIMNS. AS PER IS : 2102 (M)
CERTIFIED CORRECT COPY OF APPROVED DRAWINGS AT THIS DATE 23/05/2019
UN CONTROLLED COPY
SHARP CORNERS SHOULD BE BLUNT TO R 0.2
PROTECTIVE FINISH : PHOSPHATED TO SPECIFICATION. JSS : 0465-01-1988
CLASS-I (ACCELERATED) OIL FINISH.
DESIGN & DRAWING OFFICE,
ORDNANCE FACTORY, TIRUCHIRAPPALI-620 016.

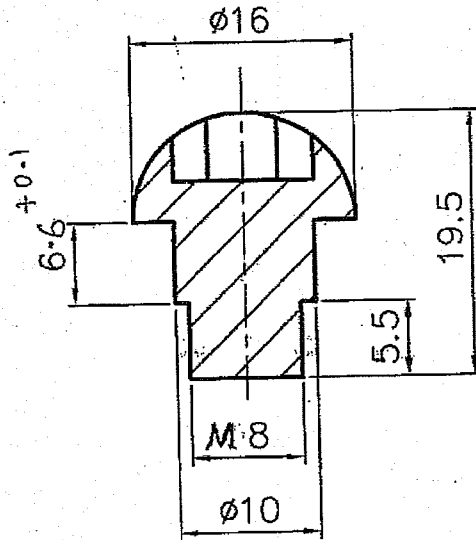
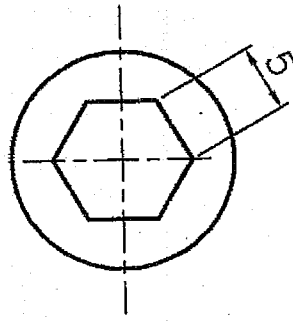
PART NO.	DESCRIPTIONS	NO OFF	MATERIAL	TREATMENT	REMARKS
	TRACED				SCALE N.T.S
	DRAWN				STORE DRG.NO.
	CHECKED				OPERATION NO.
	OIC/D&DO				DES. REF. NO.
	OFFICER/PRODN.				DRG. No.: 44P 11000*2
	OFFICER/D&DO				ORDNANCE FACTORY TIRUCHIRAPPALI-16.
	APPROVED ON: 06/06/2007				SHEETS: 1
					SHEET No.: 1

SIGNATURE & DATE	SCALE
<i>S. Manohar</i> 14-8-2019	N.T.S
<i>S. Manohar</i> 20-5-19	
<i>S. Manohar</i> 20-5-19	
<i>S. Manohar</i> 20-5-19	
<i>S. Manohar</i> 20-5-19	



DRG. NO. 44P 11001*

DIMENSIONS ARE IN mm.
 UNTOLERATED DIMNS. AS PER IS : 2102 (MED)
 MARK DRAWING No.



UN CONTROLLED COPY

UN CONTROLLED COPY
 CERTIFIED CORRECT COPY OF APPROVED
 DRAWINGS AT THIS DATE 22/07/21
 DESIGN & DRAWING OFFICE,
 ORDNANCE FACTORY, TIRUCHIRAPPALI - 620 016

IS: 5517-1993, DESIG. 55C8

MATERIAL:- BS 970-1983 Gr.070 M55(OR)E.9

HARDENED & TEMPERED:- 300-325 HV

DRG. PROVISIONAL

PART NO.	DESCRIPTIONS	NO OFF	MATERIAL	TREATMENT	REMARKS
			AS ABOVE	AS ABOVE.	
⊕	SIGNATURE & DATE.	SUB: PIYOT PIN		SCALE NTS	
	TRACED	FOR: CARRYING HANDLE ASSY.		STORE DRG.NO.	
	DRAWN <i>P. Murugesan</i>	OF: 14.5MM/20MM AMR		OPERATION NO.	
	CHECKED <i>[Signature]</i>	DES. REF. NO.		-	
	POIC/D&DO <i>[Signature]</i>	DRG. No.: 44P 11001*		SHEETS: 1	
	OFFICER/PRODN.	ORDNANCE FACTORY TIRUCHIRAPPALLI-16.		SHEET No.: 1	
	OFFICER/D&DO				
AMENDMENTS	SIG. & DATE	APPROVED ON. 02/2006			

DA No. 04/19
 Dt. 22/4/19

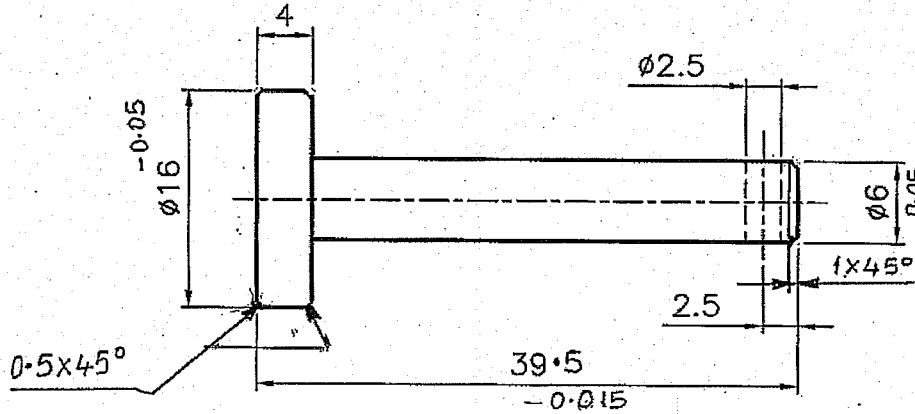
F

F

DRG. NO. 44P 11002*

DIMENSIONS ARE IN mm.
 UNTOLERATED DIMNS. AS PER IS : 2102 (MED)
 MARK DRAWING No.

DRG. PROVISIONAL




(IN CONTROLLED COPY)

UN CONTROLLED COPY
 CERTIFIED CORRECT COPY OF APPROVED
 DRAWINGS AT THIS DATE 23/07/21
 DESIGN & DRAWING OFFICE,
 ORDNANCE FACTORY, TIRUCHIRAPPALI - 620 016.

IS: 5517 - 1993, DESIGN 55C8

MATERIAL:- BS 970-1983 Gr.070 M55 (or) Eng
 HARDENED & TEMPERED:- 300-325 HV

PART NO.	DESCRIPTIONS	NO OFF	MATERIAL	TREATMENT	REMARKS
			AS ABOVE	AS ABOVE	
	SIGNATURE & DATE.	SUB: INDEX PIN			SCALE NTS
	TRACED	FOR: CARRYING HANDLE ASSY.			STORE DRG. NO.
	DRAWN <i>P. Murugesan</i>	OF: 14.5/20MM AMR			OPERATION NO.
	CHECKED <i>[Signature]</i>	DES. REF. NO.			
	OIC/D&DO <i>[Signature]</i>	DRG. No.: 44P 11002*			SHEETS: 1
	OFFICER/PRODN.	 ORDINANCE FACTORY TIRUCHIRAPPALLI-16.			SHEET No.: 1
	OFFICER/D&DO				
AMENDMENTS	SIG. & DATE	APPROVED ON. 02/2006			

DA No. 06/19
 Dt. 24/4/19

[Signature]

A
B
C
D
E
F

A
B
C
D
E
F

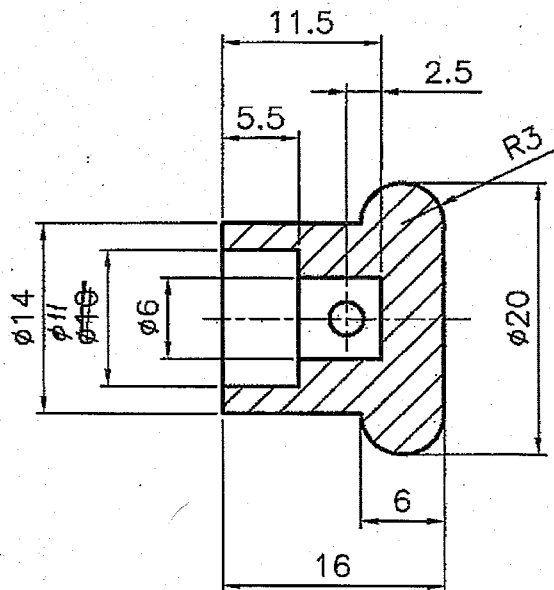
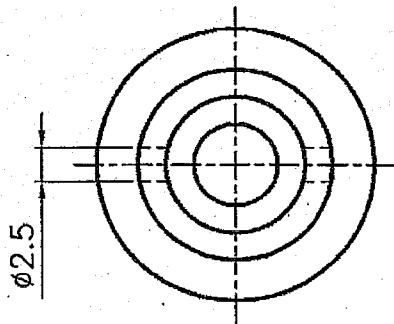
1 2 3 4

1 2 3 4

DRG. NO. 44P 11003*

DIMENSIONS ARE IN mm.
 UNTOLERATED DIMNS. AS PER IS : 2102 (MED)
 MARK DRAWING No.

DRG. PROVISIONAL



UN CONTROLLED COPY

UN CONTROLLED COPY
 CERTIFIED CORRECT COPY OF APPROVED
 DRAWINGS AT THIS DATE. 23/02/21
 DESIGN & DRAWING OFFICE,
 ORDNANCE FACTORY, TIRUCHIRAPPALI - 620 018

- 1983-1

MATERIAL:- IS-733, Gr.24345, WP- COND.N.
 SURFACR FINISH:- BLACK ANODISING

PART NO.	DESCRIPTIONS	NO OFF	MATERIAL	TREATMENT	REMARKS
			AS ABOVE	AS ABOVE	
	SIGNATURE & DATE.	SUB: KNOB			SCALE NTS
TRACED		FOR: CARRYING HANDLE ASSY.			STORE DRG.NO.
DRAWN	<i>P. Murugesan</i>	OF: 14.5/20MM AMR			OPERATION NO.
CHECKED	<i>[Signature]</i>	DES. REF. NO.			-
OIC/D&DO	<i>[Signature]</i>	DRG. No.: 44P 11003*			SHEETS: 1
OFFICER/PRODN.		ORDNANCE FACTORY TIRUCHIRAPPALI-16.			SHEET No.: 1
OFFICER/D&DO					
AMENDMENTS	APPROVED ON. 02/2006				

SI. No. 46
 DA. ND. 062/19
 30.3.19
 SIG. & DATE

A
B
C
D
E
F

A
B
C
D
E
F

1 2 3 4

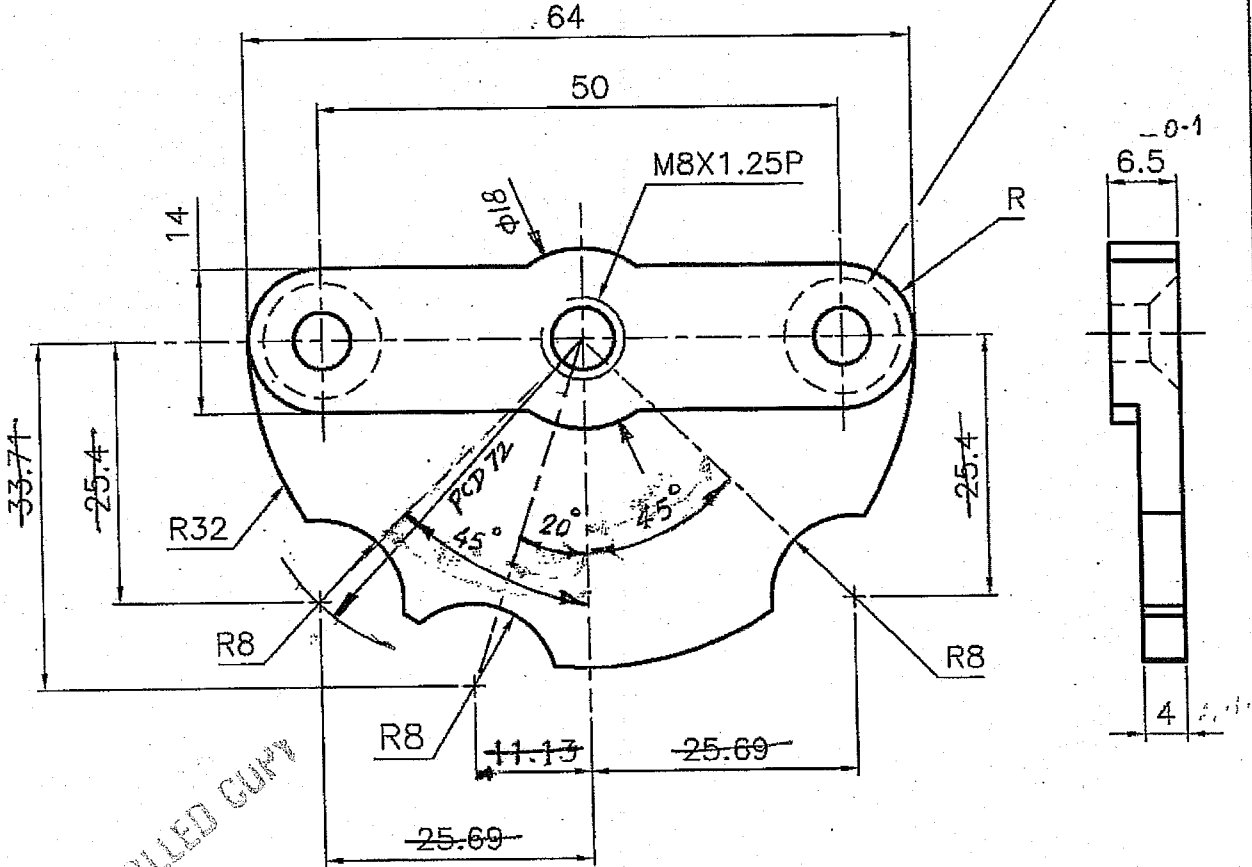
DRG.No: 44P 11004

DIMENSIONS ARE IN mm.

UNTOLERATED DIMNS. AS PER IS : 2102 (MED)

MARK DRAWING No.

2-DRILL & C'SK FOR
M5 C'SK SCREW



DRG. PROVISIONAL

IS: 5577:1993, DESIG. 55CB

MATERIAL:— BS 970-1983 Gr.070 M55(OR) En9

HARDENED & TEMPERED:— 300-325 HV

UN CONTROLLED COPY
CERTIFIED CORRECT COPY OF APPROVED
DRAWINGS AT THIS DATE 23/07/21

DESIGN & DRAWING OFFICE,
ORDNANCE FACTORY, TIRUCHIRAPPALI - 620 016.

PART NO.	DESCRIPTIONS	NO OFF	MATERIAL	TREATMENT	REMARKS
			AS ABOVE	AS ABOVE	
	SIGNATURE & DATE.	SUB: PIVOT INDEX PLATE			SCALE NTS
	TRACED	FOR: CARRYING HANDLE ASSY.			STORE DRG.NO.
	DRAWN P. Murugesan	OF: 14.5/20MM AMR			OPERATION NO.
	CHECKED	DES. REF. NO.			-
	OIC/D&DO	DRG. No.: 44P 11004*2			SHEETS: 1
	OFFICER/PRODN.	ORDNANCE FACTORY TIRUCHIRAPPALI-16.			SHEET No.: 1
	OFFICER/D&DO				
AMENDMENTS	SIG. & DATE	APPROVED ON. 2/2006			

DA.No. 010/20
DT. 14/8/20
DA.No. 54/19
Dt. 24/4/19

SIG. & DATE

APPROVED ON. 2/2006



ORDNANCE FACTORY
TIRUCHIRAPPALI-16.

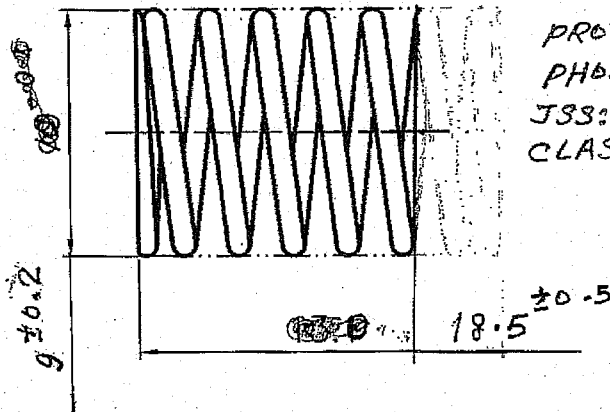
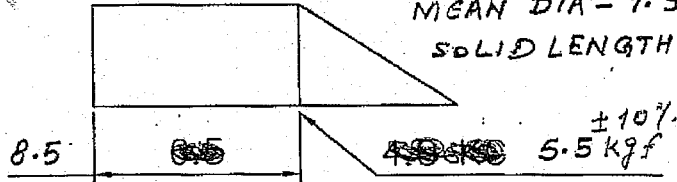
DRG. NO. 44P 11006*2

DIMENSIONS ARE IN mm.
 UNTOLERATED DIMNS. AS PER IS : 2102 (MED)
 MARK DRAWING No.

DRG. PROVISIONAL COPY
 UN CONTROLLED COPY
 CERTIFIED CORRECT COPY OF
 DRAWINGS AT THIS DATE 23.02/21
 DESIGN & DRAWING OFFICE,
 ORDNANCE FACTORY, TIRUCHIRAPPALLI - 620 016.

- A - WIRE DIA = ~~0.8~~ 1.1 mm ± 0.5
- B - NO. OF EFFECTIVE COILS = 9 ± 0.5
- C - WOUND RH OR LH.
- D - LOAD IN STATIC.

NO. OF COILS = 7 ± 0.5
 MEAN DIA = 7.9 ± 0.2
 SOLID LENGTH = 7.7



PROTECTIVE FINISH:
 PHOSPHATE TO SPECN.
 JSS: 0465-01-1994,
 CLASS-II, OIL FINISH.

A SPRING MUST REGISTER A FREE LENGTH OF 13.
 AFTER CRAMPING TO 6.5 ± 0.2 FOR 12 HOURS.
 TWO END COILS TO BE CLOSED IN GROUND SQUARE TO
 THE AXIS OF SPRING & SHARP EDGES REMOVED.

MATERIAL: - IS-4454 Pt.1 - 2001 Gr. DH
~~1981 Gr. 3~~
~~OR BS 5216:1975 ND 3~~

HDS/HT
 6/8/19

PART NO.	DESCRIPTIONS	NO OFF	MATERIAL	TREATMENT	REMARKS
			AS ABOVE	AS ABOVE	
	SIGNATURE & DATE.	SUB: INDEX SPRING			SCALE NTS
	TRACED	FOR: CARRYING HANDLE ASSY.			STORE DRG. NO.
	DRAWN P. Murrugesan	OF: 14.5MM/20MM AMR			OPERATION NO.
	CHECKED	DES. REF. NO.			-
	OIC/D&DO	DRG. No.: 44P 11006*2			SHEETS: 1
	OFFICER/PRDN.	ORDNANCE FACTORY TIRUCHIRAPPALLI-16.			SHEET No.: 1
	OFFICER/D&DO				
AMENDMENTS	SIG. & DATE	APPROVED ON. 02/2006			

DA.No. 019/19
 Dd. 3/7/19
 Sl. No. 47
 DA.No. 002/19

30.3.19

SIG. & DATE

1

2

3

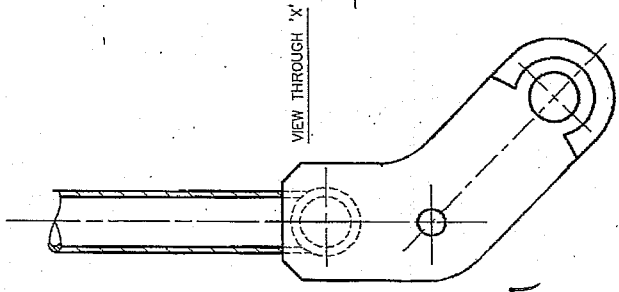
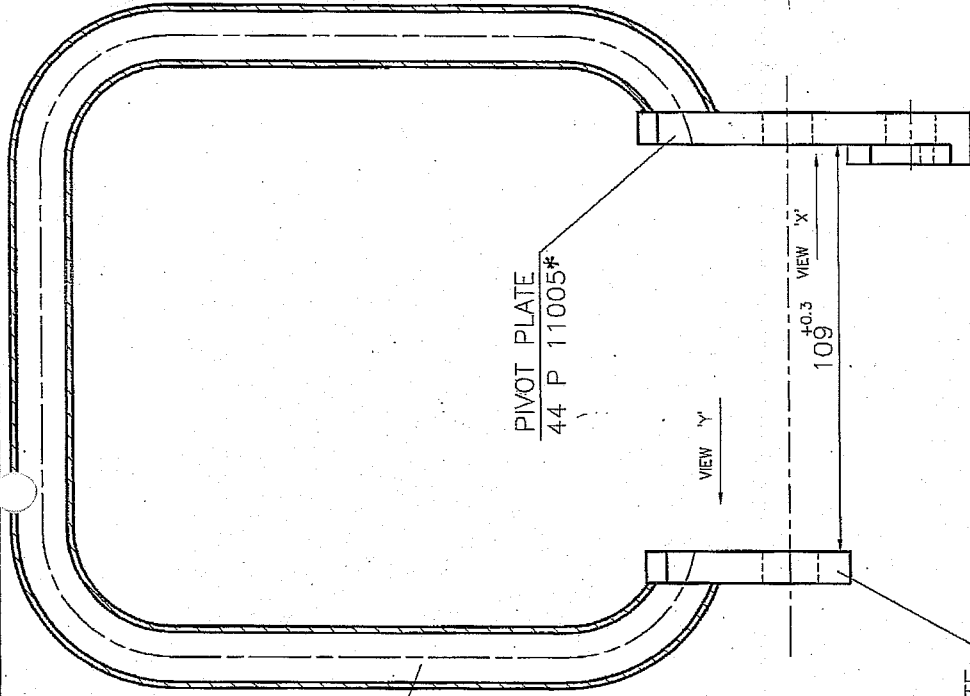
4

DRG. PROVISIONAL

HANDLE FORMING
44 P 11103*

PIVOT PLATE
44 P 11005*

HANDLE MOUNTING PLATE
44 P 1101*



UN CONTROLLED COPY

CERTIFIED CORRECT COPY OF APPROVED
DRAWINGS AT THIS DATE 23/07/2011
S. Sankar
DESIGN & DRAWING OFFICE.
ORDNANCE FACTORY, TIRUCHIRAPPALI - 620 016.

WELD AS PER SAMPLE
STRESS RELIEVE AFTER WELDING

DIMENSIONS ARE IN mm.
UNTOLERATED DIMNS. AS PER IS : 2102 (MED).

SHARP CORNERS SHOULD BE BLUNT TO R 0.2
PROTECTIVE FINISH : PHOSPHATED TO SPECIFICATION. JSS : 0465-01-1988
CLASS-I (ACCELERATED) OIL FINISH.

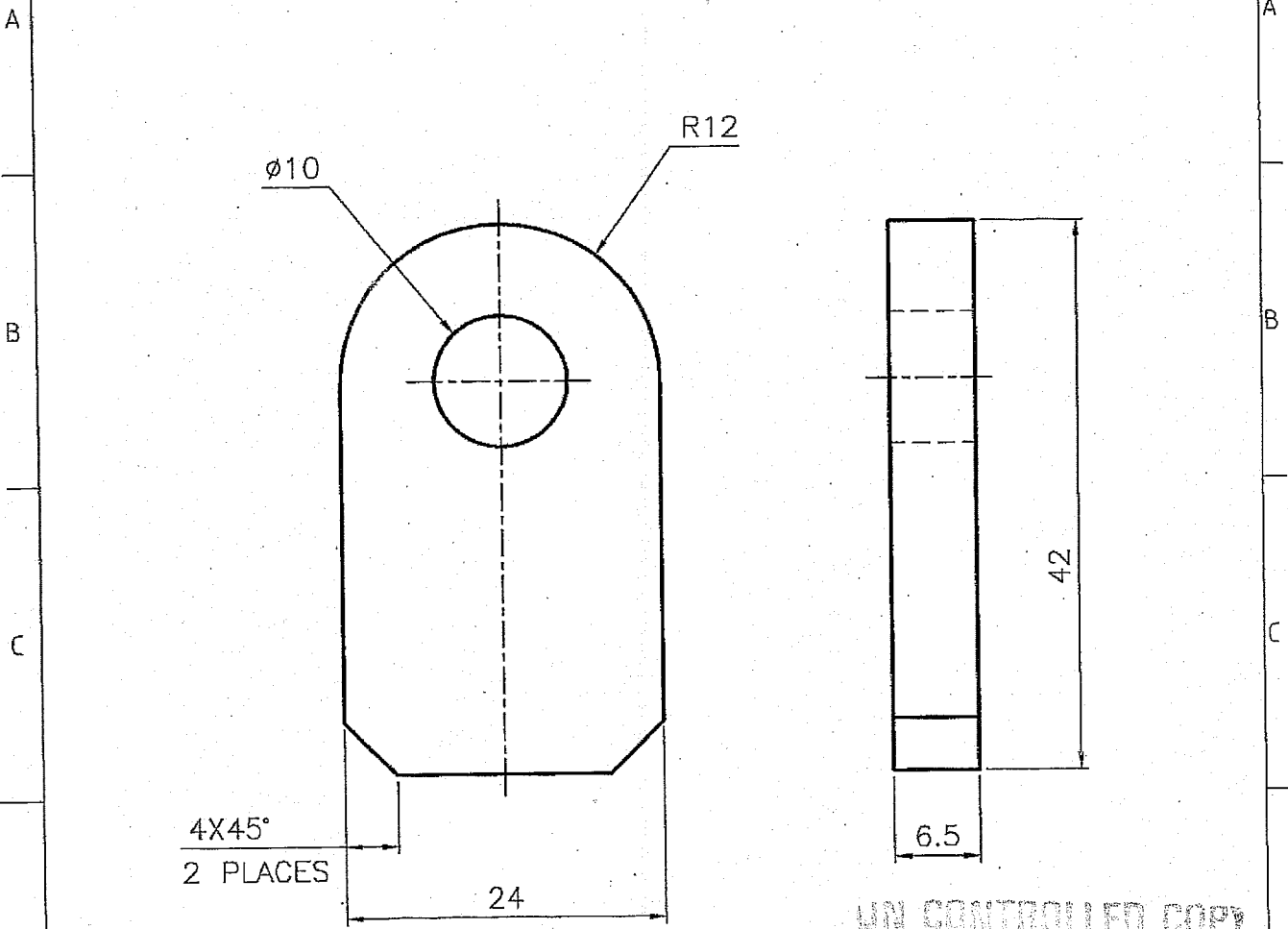
PART NO.	DESCRIPTIONS	NO OFF	MATERIAL	TREATMENT	REMARKS
TRACED	SIGNATURE & DATE.				SCALE N.T.S
DRAWN	<i>S. Sankar</i> 16/10/07		SUB: CARRYING HANDLE WELD ASSY.		STORE DRG.NO.
CHECKED	<i>S. Sankar</i>		SUB: CARRYING HANDLE ASSY.		
OFFICER/PROB.	<i>S. Sankar</i>		OF: 12.7/14.5/20mm AMR.		
OFFICER/D&DO	<i>S. Sankar</i>		DES. REF. NO.		OPERATION NO.
APPROVED ON	06/2007		DRG. No.: 44P 11100*		
AMENDMENTS & DATE			ORDNANCE FACTORY TIRUCHIRAPPALI-16.		SHEETS: 1
					SHEET No.: 1

DRG NO. 44P 11101*

DIMENSIONS ARE IN mm.

UNTOLERATED DIMNS. AS PER IS : 2102 (MED)

MARK DRAWING No.



UN CONTROLLED COPY

IS: 5517-1993, DESIG. 5508


MATERIAL:- BS 970-1983 Gr.070 M55 (OR) En9

HARDENED & TEMPERED:- 300-325 HV

DRG. PROVISIONAL

UN CONTROLLED COPY
CERTIFIED CORRECT COPY OF APPROVED
DRAWINGS AT THIS DATE 22/02/21

DESIGN & DRAWING OFFICE,
ORDNANCE FACTORY, TIRUCHIRAPPALI -620 016

PART NO.	DESCRIPTIONS	NO OFF	MATERIAL	TREATMENT	REMARKS
	SIGNATURE & DATE.	SUB: HANDLE MOUNTING PLATE			SCALE NTS
	TRACED	FOR: CARRYING HANDLE ASSY.			STORE DRG.NO.
	DRAWN <i>S. Venkatesh 16/07</i>	OF: 14.5MM/20MM AMR			OPERATION NO.
	CHECKED <i>S. Venkatesh</i>	DES. REF. NO.			-
	OIC/D&DO <i>S. Venkatesh</i>	DRG. No.: 44P 11101*			SHEETS: 1
	OFFICER/PRDGN.	 ORDNANCE FACTORY TIRUCHIRAPPALI-16.			SHEET No.: 1
	OFFICER/D&DO <i>S. Venkatesh</i>				
AMENDMENTS	SIG. & DATE	APPROVED ON: 06/2007			

DA No. 06/19
Dt. 24/4/19

SIG. & DATE

APPROVED ON: 06/2007



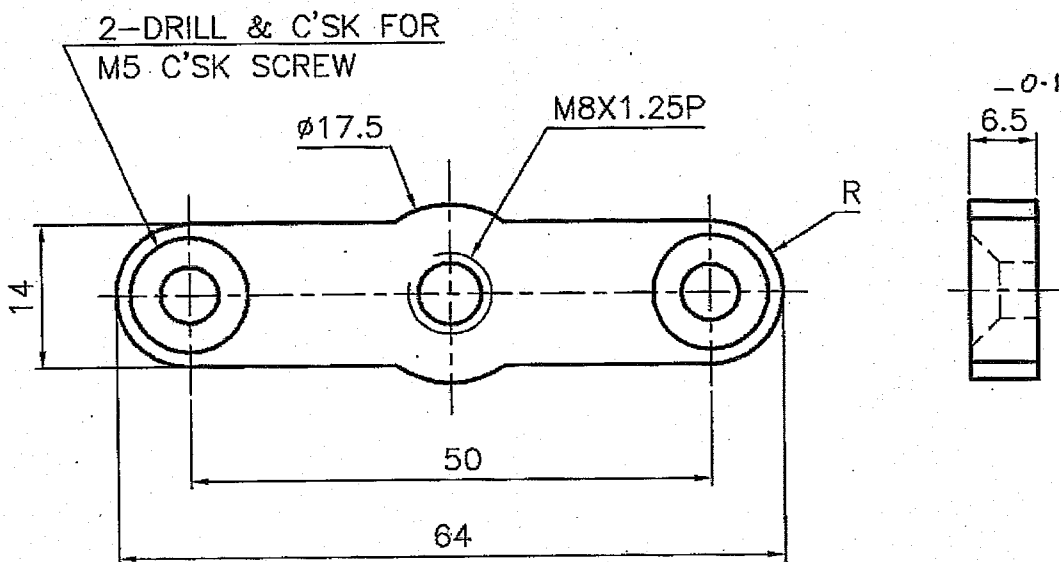
ORDNANCE FACTORY
TIRUCHIRAPPALI-16.

DRG. NO. 44P 11102 *

DIMENSIONS ARE IN mm.
 UNTOLERATED DIMNS. AS PER IS : 2102 (MED)
 MARK DRAWING No.

UN CONTROLLED COPY


UN CONTROLLED COPY
 CERTIFIED CORRECT COPY OF APPROVED
 DRAWINGS AT THIS DATE 23/02/21
 DESIGN & DRAWING OFFICE,
 ORDNANCE FACTORY, TIRUCHIRAPPALI - 620 016.



DRG. PROVISIONAL

IS: 5517-1993, DESIG: 55C8

MATERIAL:- BS 970-1983 Gr.070 M55 (En9)
 HARDENED & TEMPERED:- 300-325 HV

PART NO.	DESCRIPTIONS	NO OFF	MATERIAL	TREATMENT	REMARKS
			AS ABOVE	AS ABOVE	
	SIGNATURE & DATE.	SUB: INDEX PLATE			SCALE NTS
	TRACED	FOR: CARRYING HANDLE ASSY.			STORE DRG. NO.
	DRAWN <i>P. Murugesan</i>	OF: 14.5MM/20MM AMR			OPERATION NO.
	CHECKED <i>L. S. S.</i>	DES. REF. NO.			-
	OIC/D&DO <i>A. Jeyatharan</i>	DRG. No.: 44P 11102 *			SHEETS: 1
	OFFICER/PRODN.	 ORDNANCE FACTORY TIRUCHIRAPPALI-16.			SHEET No.: 1
	OFFICER/D&DO				
AMENDMENTS	SIG. & DATE	APPROVED ON. 02/2006			

DA. No. - 04/19
 Dt. 24/4/19

S. S.

1 2 3 4

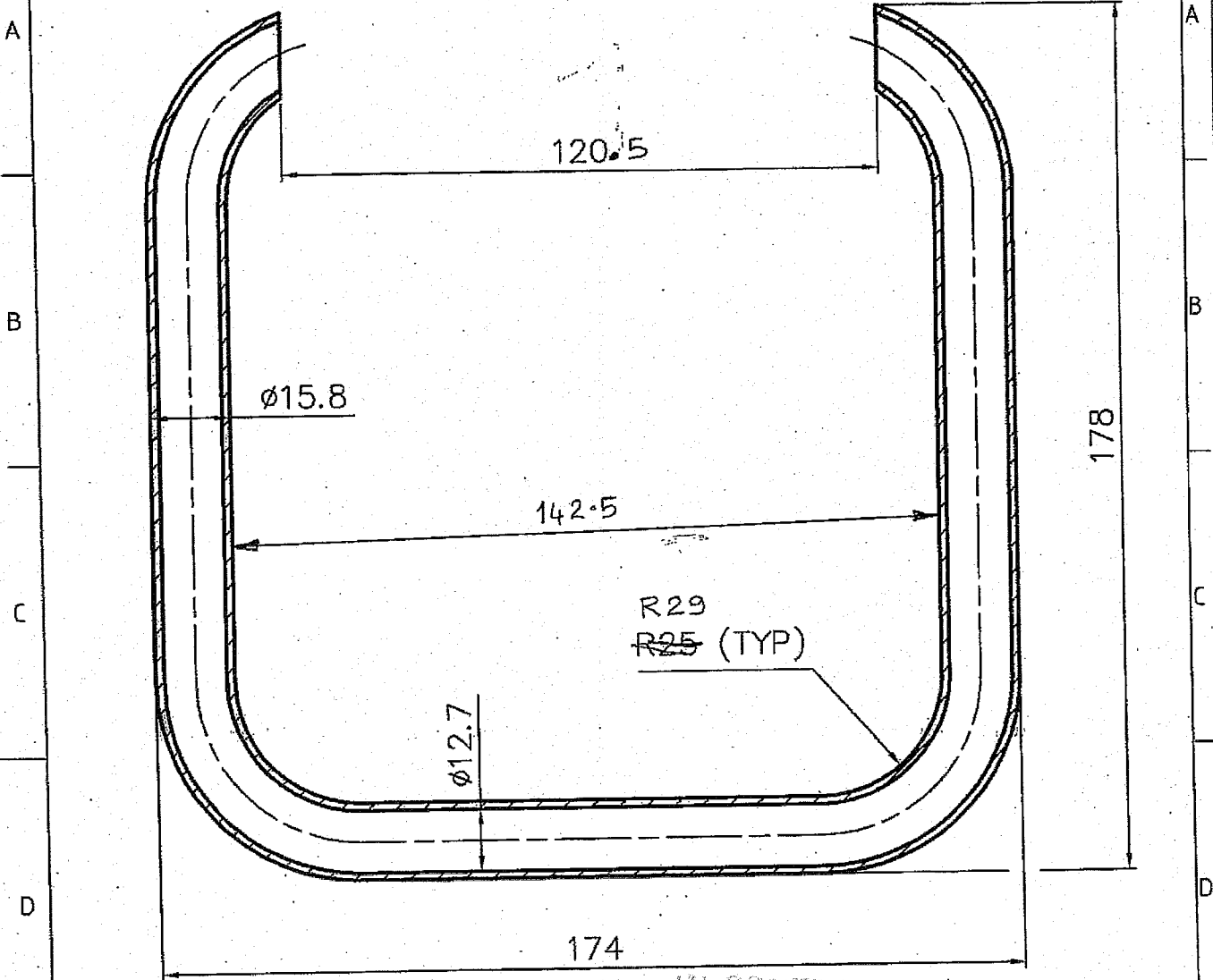
DRG. NO. 44P 11103 *

DRG. PROVISIONAL

DIMENSIONS ARE IN mm.

UNTOLERATED DIMNS. AS PER IS : 2102 (MED)

MARK DRAWING No.




UN CONTROLLED COPY

MATERIAL:- STEEL TUBE BS-1449 PT-1 1983 CS-4' SEC-2
OR IS 3074:2005 CDS-4 OR EN-32A

DATE 02/2006

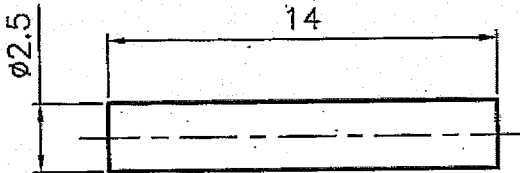
UN CONTROLLED COPY
CERTIFIED CORRECT COPY OF APPROVED
DRAWINGS AT THIS DATE 23.02.2006
DRAWING OFFICE,
ORDNANCE FACTORY, TIRUCHIRAPPALLI - 620 016

PART NO.	DESCRIPTIONS	NO OFF	MATERIAL	TREATMENT	REMARKS
	SIGNATURE & DATE.	SUB: HANDLE FORMING			SCALE NTS
	TRACED	FOR: CARRYING HANDLE ASSY.			STORE DRG.NO.
	DRAWN <i>P. Murugesan</i>	OF: 14.5MM/20MM AMR.			OPERATION NO.
	CHECKED <i>[Signature]</i>	DES. REF. NO.			SHEETS: 1
	OIC/D&DO <i>[Signature]</i>	DRG. No.: 44P 11103*			SHEET No.: 1
	OFFICER/PRODN.	 ORDNANCE FACTORY TIRUCHIRAPPALLI-16.			
	OFFICER/D&DO				
AMENDMENTS	SIG. & DATE	APPROVED ON. 02/2006			

SI. No. 48
DA. No. 002/19
30.3.19
SIG. & DATE

DRG. NO. 44P 11105

DIMENSIONS ARE IN mm.
 UNTOLERATED DIMNS. AS PER IS : 2102 (MED)
 MARK DRAWING No.



UN CONTROLLED COPY

DRG. PROVISIONAL

UN CONTROLLED COPY
 CERTIFIED CORRECT COPY OF APPROVED
 DRAWINGS AT THIS DATE: 23/02/21
 DESIGN & DRAWING OFFICE,
 ORDNANCE FACTORY, TIRUCHIRAPPALI - 620 016.

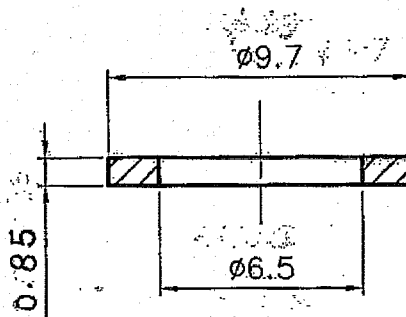
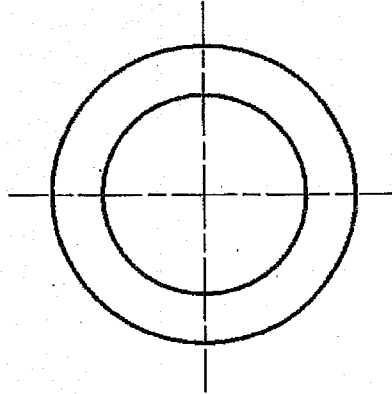
MATERIAL:- BS 970-PART-3 1991 Gr. 605 M36
 HARDENED & TEMPERED:- 300 HV

PART NO.	DESCRIPTIONS	NO OFF	MATERIAL	TREATMENT	REMARKS
			AS ABOVE	AS ABOVE	
⊕	SIGNATURE & DATE.	SUB: SPRING PIN			SCALE NTS
	TRACED	FOR: CARRYING HANDLE ASSY.			STORE DRG.NO.
	DRAWN <i>P. Munugasari</i>	OF: 14.5MM/20MM AMR.			
	CHECKED <i>[Signature]</i>	DES. REF. NO.			OPERATION NO.
	OIC/D&DO <i>[Signature]</i>	DRG. No.: 44P 11105			
	OFFICER/PRD.N.	ORDNANCE FACTORY TIRUCHIRAPPALI-16.			SHEETS: 1
	OFFICER/D&DO				SHEET No.: 1
AMENDMENTS	SIG. & DATE	APPROVED ON. 02/2006			

DRG. NO. 44P 11106

DIMENSIONS ARE IN mm.
 UNTOLERATED DIMNS. AS PER IS : 2102 (MED)
 MARK DRAWING No.

DRG. PROVISIONAL



UN CONTROLLED COPY

UN CONTROLLED COPY
 CERTIFIED CORRECT COPY OF APPROVED
 DRAWINGS AT THIS DATE 23/07/21

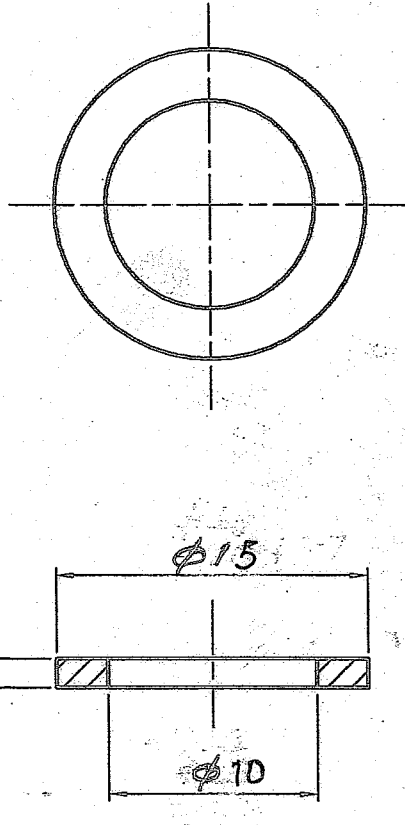
DESIGN & DRAWING OFFICE,
 ORDNANCE FACTORY, TIRUCHIRAPPALI - 620 016.

-		WASHER (STD.)	IS: 2016 - 1967	-	-	
PART NO.	DESCRIPTIONS		NO OFF	MATERIAL	TREATMENT	REMARKS
	SIGNATURE & DATE.		SUB: WASHER		SCALE NTS	
TRACED			FOR: CARRYING HANDLE ASSY.		STORE DRG. NO.	
DRAWN	<i>P. Murugesan</i>		OF: 14.5MM/20MM AMR.		OPERATION NO.	
CHECKED	<i>[Signature]</i>		DES. REF. NO.		-	
OIC/D&DO	<i>[Signature]</i>		DRG. No.: 44P 11106		SHEETS: 1	
OFFICER/PRODN.			ORDNANCE FACTORY TIRUCHIRAPPALI - 16.		SHEET No.: 1	
OFFICER/D&DO						
AMENDMENTS	SIG. & DATE	APPROVED ON. 02/2006				

DRG. NO. 44P 11106

DIMENSIONS ARE IN mm.
 UNTOLERATED DIMNS. AS PER IS : 2102 (MED)
 MARK DRAWING No.

DRG. PROVISIONAL



UN CONTROLLED COPY
 CERTIFIED CORRECT COPY OF APPROVED
 DRAWING AT THIS DATE (19/7/21)
 DESIGN & DRAWING OFFICE,
 ORDNANCE FACTORY, TIRUCHIRAPPALI - 620 016.

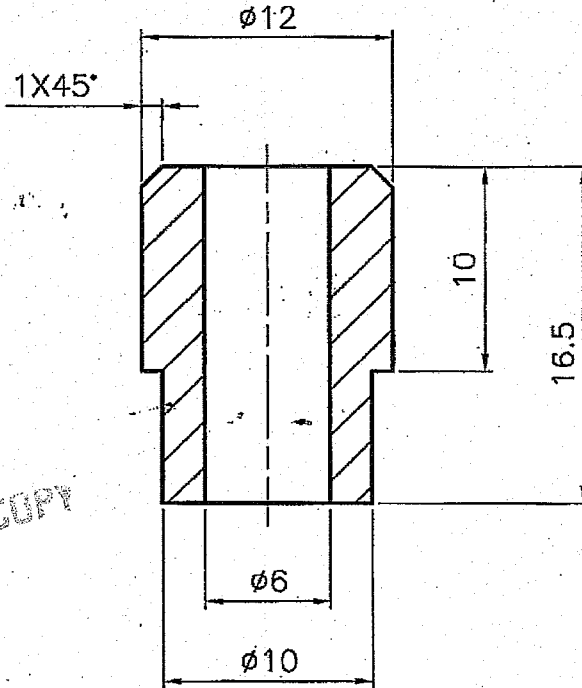
STEEL

-	WASHER (STD.)	IS: 2016 - 1967	-	-	
PART NO.	DESCRIPTIONS	NO OFF	MATERIAL	TREATMENT	REMARKS
	SIGNATURE & DATE.	SUB: WASHER			SCALE NTS
TRACED		FOR: CARRYING HANDLE ASSY.			STORE DRG.NO.
DRAWN	P. Murugesan	OF: 14.5MM/20MM AMR.			
CHECKED		DES. REF. NO.			OPERATION NO.
OIC/D&DO		DRG. No.: 44P 11106*			-
OFFICER/PRDN.		ORDNANCE FACTORY TIRUCHIRAPPALI-16.			SHEETS: 1
OFFICER/D&DO					SHEET No.: 1.
AMENDMENTS	SIG. & DATE	APPROVED ON.	02/2006		

DA. NO. 019/21
 Dt. 19/7/21

DRG. NO. 44P 11007*

DIMENSIONS ARE IN mm.
 UNTOLERATED DIMNS. AS PER IS : 2102 (MED)
 MARK DRAWING No.




UN CONTROLLED COPY

UN CONTROLLED COPY
 CERTIFIED CORRECT COPY OF APPROVED
 DRAWINGS AT THIS DATE: 23/07/21
 DESIGN & DRAWING OFFICE,
 ORDNANCE FACTORY, TIRUCHIRAPPALI - 620 016.

IS: 5517-1993, DESIG. 40CB

MATERIAL:- BS 970-1983 Gr.080 M40(OR) En8
 HARDENED & TEMPERED:- 300-325 HV

DRG. PROVISIONAL

PART NO.	DESCRIPTIONS	NO OFF	MATERIAL	TREATMENT	REMARKS
			AS ABOVE	AS ABOVE	
	SIGNATURE & DATE.	SUB: BUSH			SCALE NTS
	TRACED	FOR: CARRYING HANDLE ASSY.			STORE DRG.NO.
	DRAWN <i>P. Murugesan</i>	OF: 14.5/20MM AMR			
	CHECKED <i>[Signature]</i>	DES. REF. NO.			OPERATION NO.
	OIC/D&DO <i>[Signature]</i>	DRG. No.: 44P 11007*			-
	OFFICER/PRODN.	 ORDNANCE FACTORY TIRUCHIRAPPALI-16.			SHEETS: 1
	OFFICER/D&DO				SHEET No.: 1
AMENDMENTS	SIG. & DATE	APPROVED ON. 02/2006			

DA No 05/19
 dt. 24/4/19

[Signature]