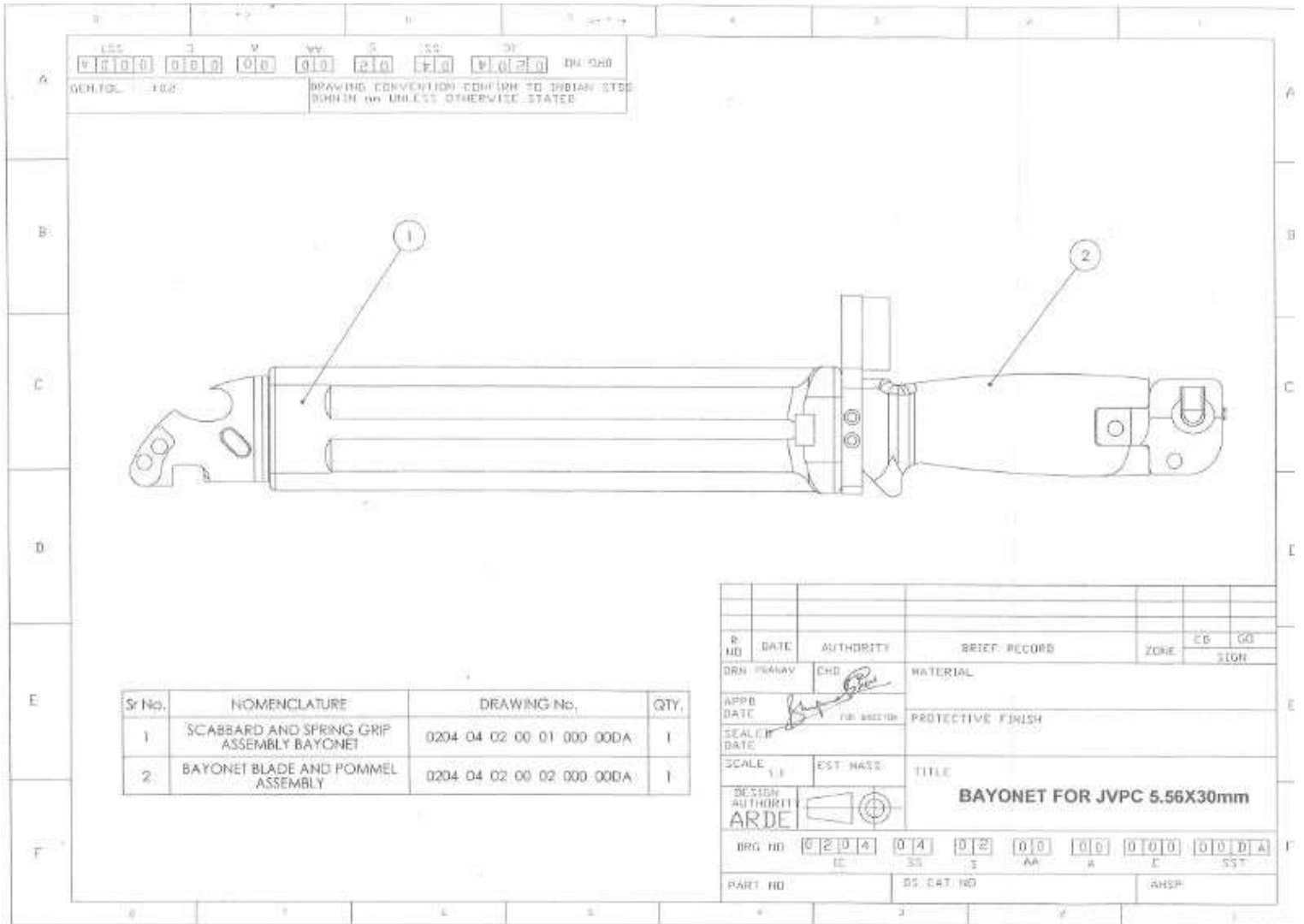




## LIST OF COMPONENT, BAYONET FOR JVPC 5.56 X30mm

Sr. No.	NOMENCLATURE	DRAWING No.	QTY.
1.	BAYONET FOR JVPC 5.56X30mm	0204 04 02 00 00 000 00DA	
2.	SCABBARD AND SPRING GRIP ASSEMBLY	0204 04 02 00 01 000 00DA	
3.	SPRING GRIP	0204 04 02 00 01 001 00DA	1
4.	HOUSING SCABBARD (MOULDING)	0204 04 02 01 03 000 00DA	
5.	HOOK WIRE	0204 04 02 01 03 001 00DA	1
6.	INSERT	0204 04 02 01 03 002 00DA	1
7.	CUTTER ASSEMBLY BAYONET (RIVETING)	0204 04 02 03 06 000 00DA	
8.	STOPPER	0204 04 02 03 06 001 00DA	1
9.	SNAP HEAD RIVET 3X12 TO IS:2155,1962	STD. COMPONENT	2
10.	CUTTER ASSEMBLY BAYONET (WELDING)	0204 04 02 06 08 000 00DA	
11.	FULCRUM BAYONET	0204 04 02 06 08 001 00DA	1
12.	PLATE CUTTER	0204 04 02 06 08 002 00DA	1
13.	HEXAGON THIN NUT(UNCHAMFERED) M4 IS:1364 PART 5,1985	STD. COMPONENT	1
14.	BAYONET BLADE AND POMMEL ASSEMBLY	0204 04 02 00 02 000 00DA	
15.	C'SK HEAD MACHINE SCREW M5X22 TO IS:1365-1968	STD. COMPONENT	
16.	POMMEL ASSEMBLY	0204 04 02 02 05 000 00DA	
17.	CATCH	0204 04 02 02 05 001 00DA	1
18.	SCREW SET CATCH	0204 04 02 02 05 002 00DA	1
19.	POMMEL BAYONET	0204 04 02 02 05 003 00DA	1
20.	SPRING CATCH	0204 04 02 02 05 004 00DA	1
21.	PLUNGER CATCH	0204 04 02 02 05 005 00DA	1
22.	GRIP BAYONET (MOULDING)	0204 04 02 02 04 000 00DA	
23.	BLADE AND CROSS PIECE ASSEMBLY (RIVETING)	0204 04 02 04 07 000 00DA	
24.	BLADE	0204 04 02 04 07 001 00DA	1
25.	FLAT C'SK HEAD 90° RIVET 3.0X18	STD. COMPONENT	2
26.	CROSS PIECE AND SLEEVE ASSEMBLY (WELDING)	0204 04 02 07 09 000 00DA	
27.	CROSS PIECE BAYONET	0204 04 02 07 09 001 00DA	1
28.	SLEEVE BAYONET	0204 04 02 07 09 002 00DA	1

(1)

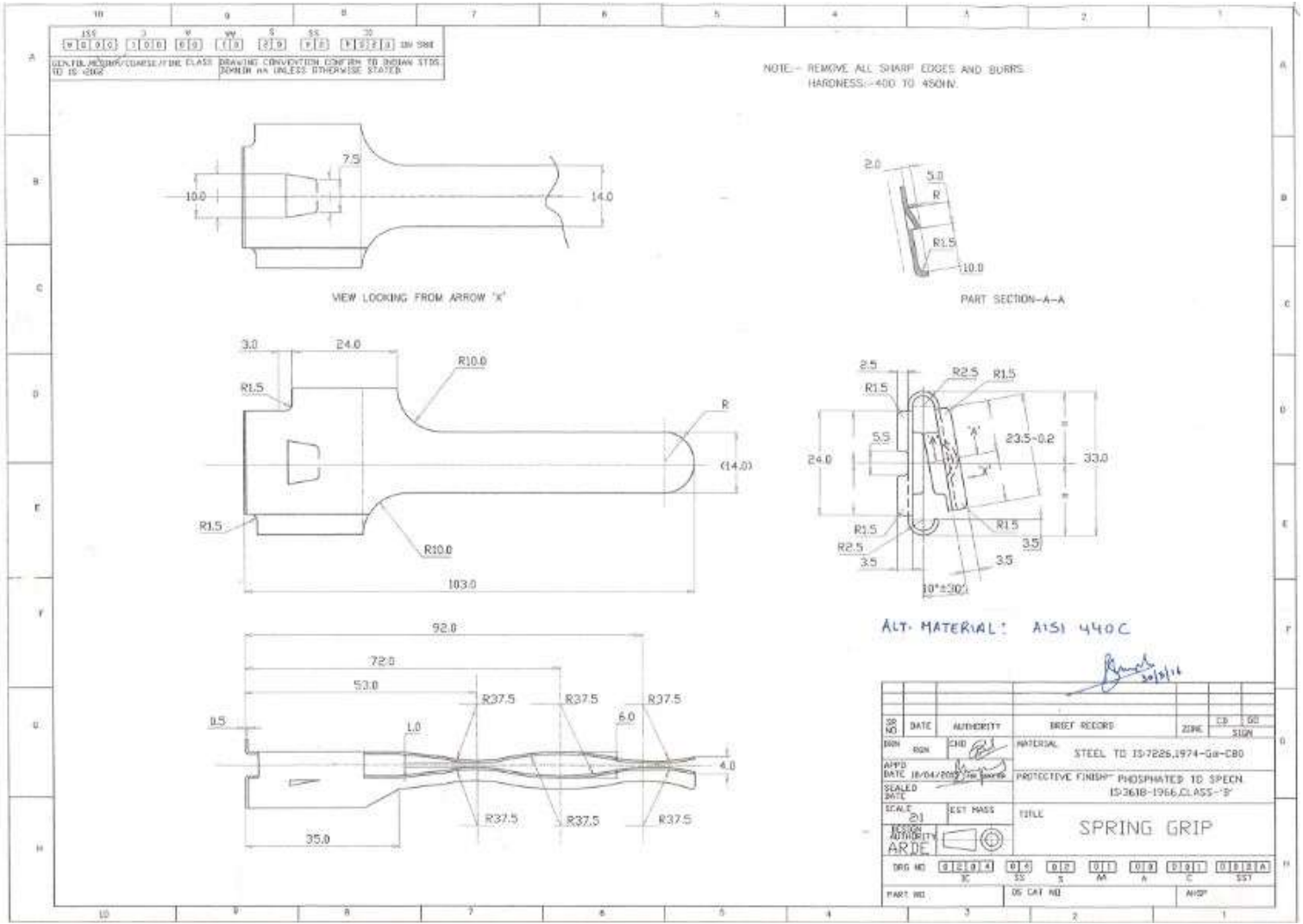


Sr No.	NOMENCLATURE	DRAWING No.	QTY.
1	SCABBARD AND SPRING GRIP ASSEMBLY BAYONET	0204 04 02 00 01 000 00DA	1
2	BAYONET BLADE AND POMMEL ASSEMBLY	0204 04 02 00 02 000 00DA	1

DRN	DATE	AUTHORITY	BRIEF RECORD	ZONE	CS	GO
DRN	FRMAY	CHD	MATERIAL			SIGN
APPB DATE		FIB. BRITISH	PROTECTIVE FINISH			
SCALE	1:1	EST. MASS.	TITLE			
DESIGN AUTHORITY	ARDE		<b>BAYONET FOR JVPC 5.56X30mm</b>			
DRG NO	0204	04	02	00	00	0000DA
PART NO		DS CAT NO				ANSP

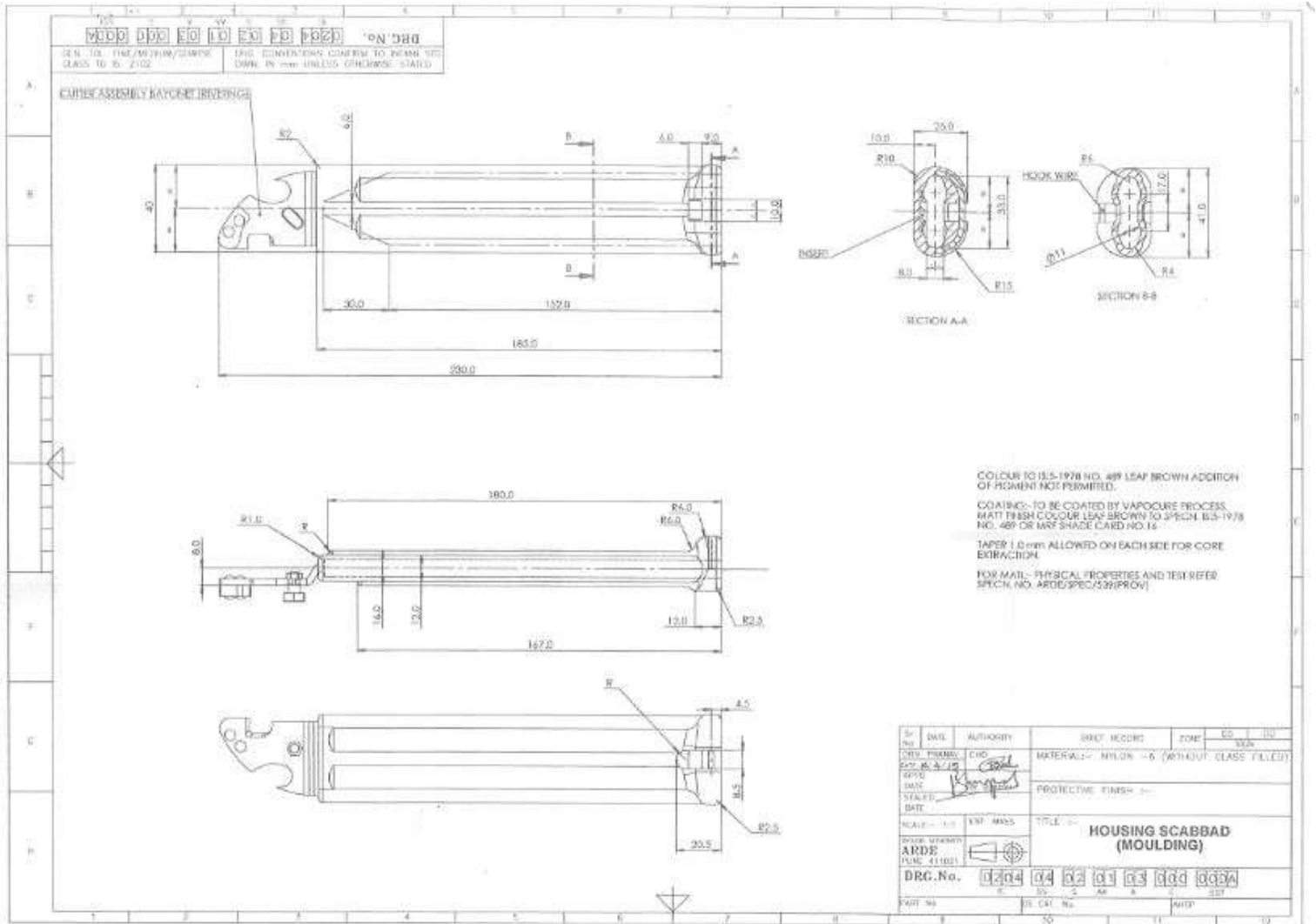


(3)

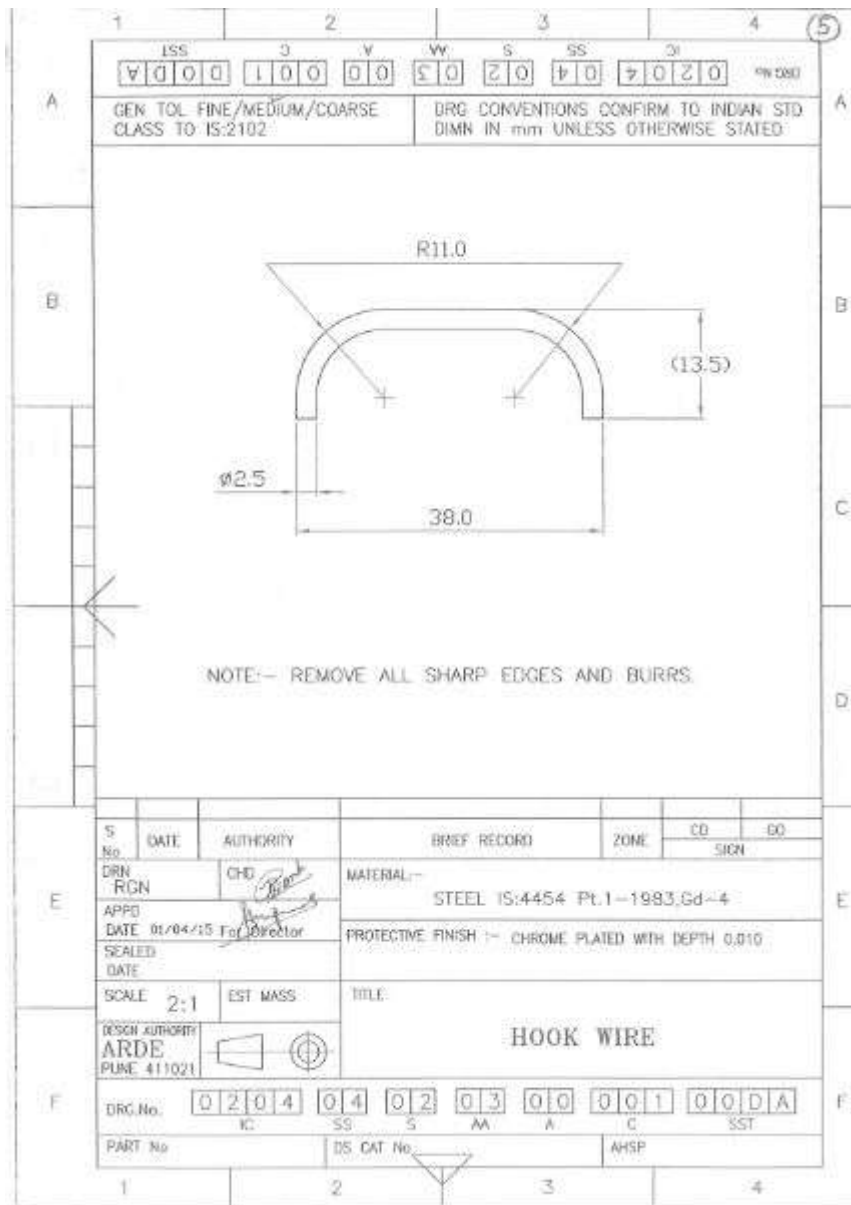


SP NO.	DATE	AUTHORITY	BRIEF RECORD	ZINC	CD	DC
REV	REV	CHG	MATERIAL	STEEL TO IS-7826:1974-G8-C80		SIGN
APPR	DATE	18/04/2009	PROTECTIVE FINISH	PHOSPHATED TO SPECN		
SCALE	EST MASS		TITLE	SPRING GRIP		
DRG NO.	STEIG 14	013	010	011	012	0121A
PART NO.		05	05	05	05	05

(4)

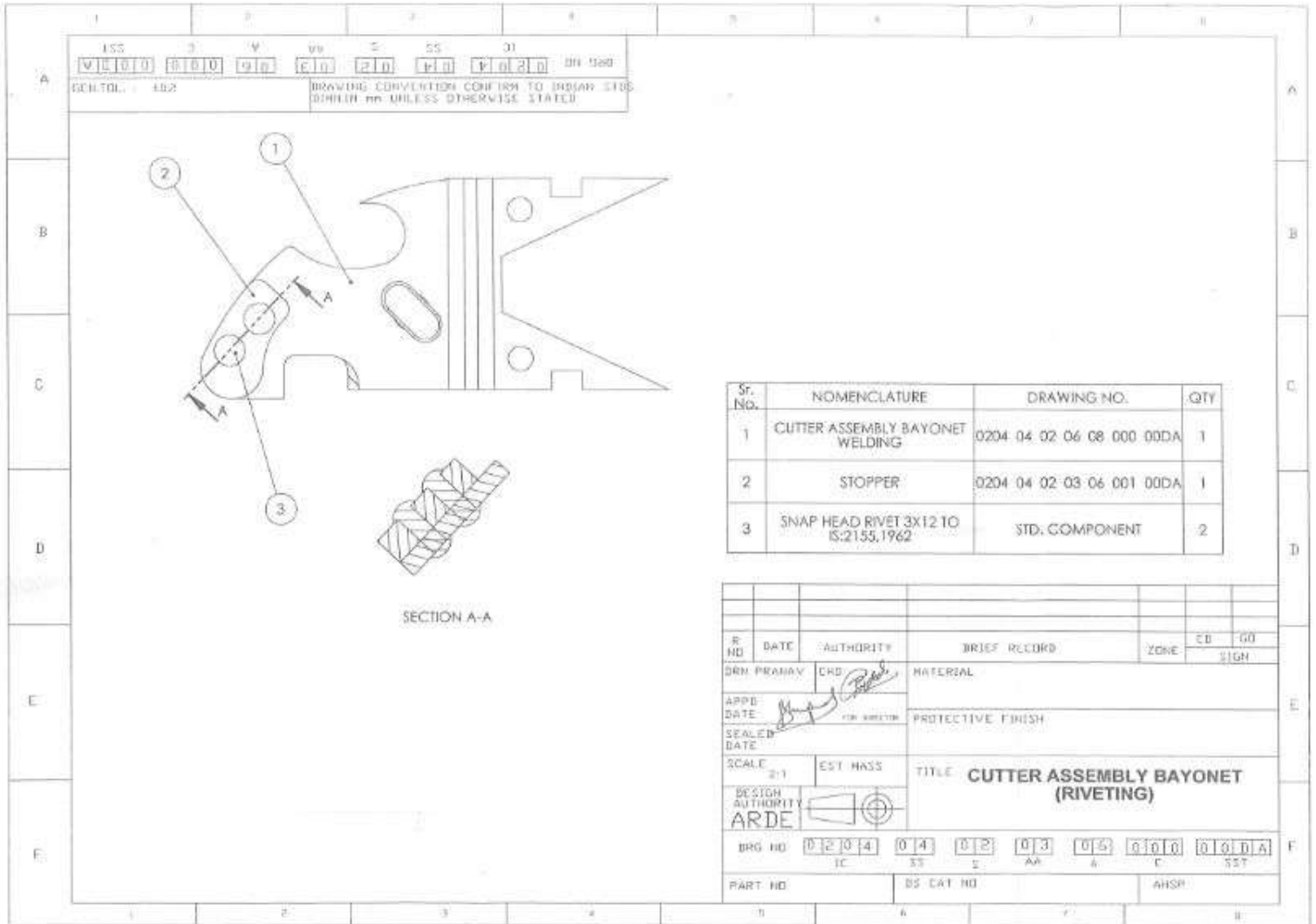


(5)





(7)

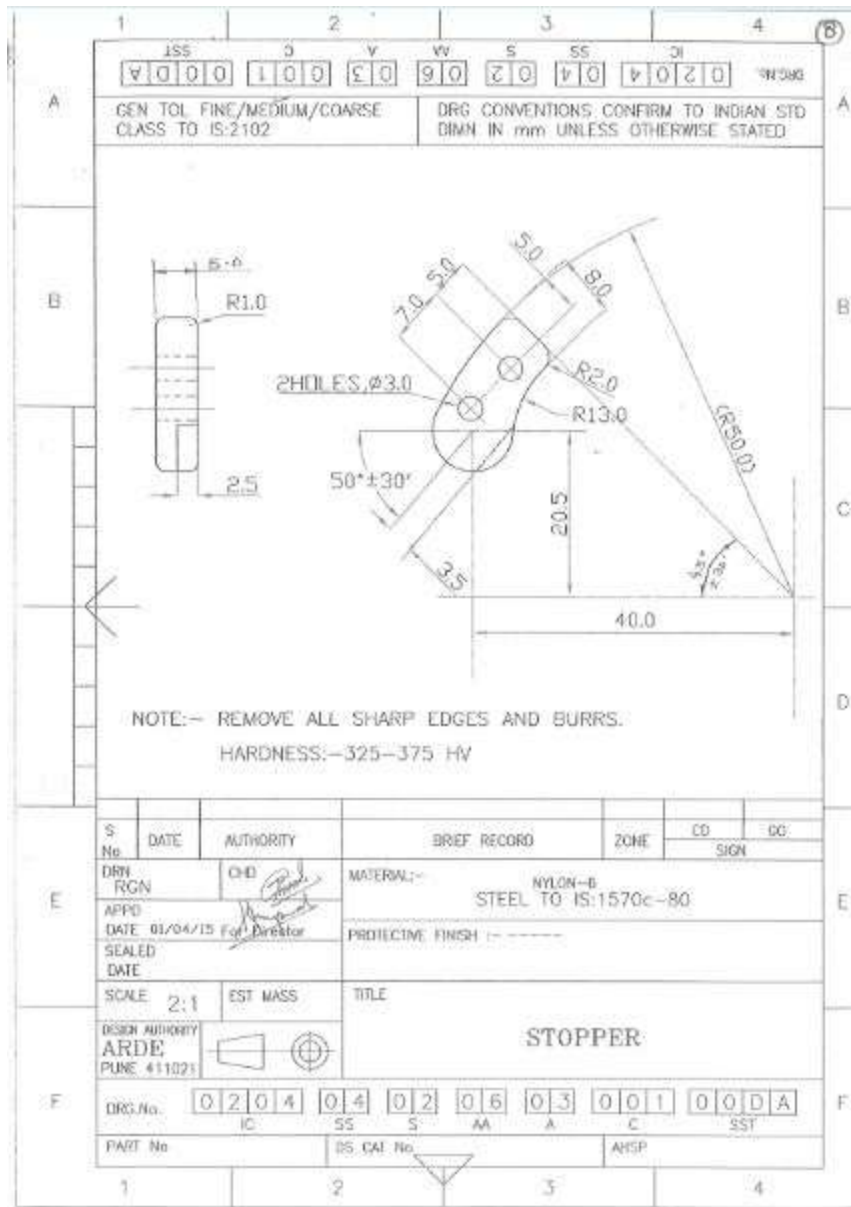


ISS 3 V Vv S SS 01  
VIL010 B1010 910 C10 210 410 410210 011 000  
GEN.TOL. : 0.02 DRAWING CONVENTION CONFORM TO INDIAN STD.  
DIMLIN mm UNLESS OTHERWISE STATED

Sr. No.	NOMENCLATURE	DRAWING NO.	QTY
1	CUTTER ASSEMBLY BAYONET WELDING	0204 04 02 06 08 000 00DA	1
2	STOPPER	0204 04 02 03 06 001 00DA	1
3	SNAP HEAD RIVET 3X12 TO IS:2155,1962	STD. COMPONENT	2

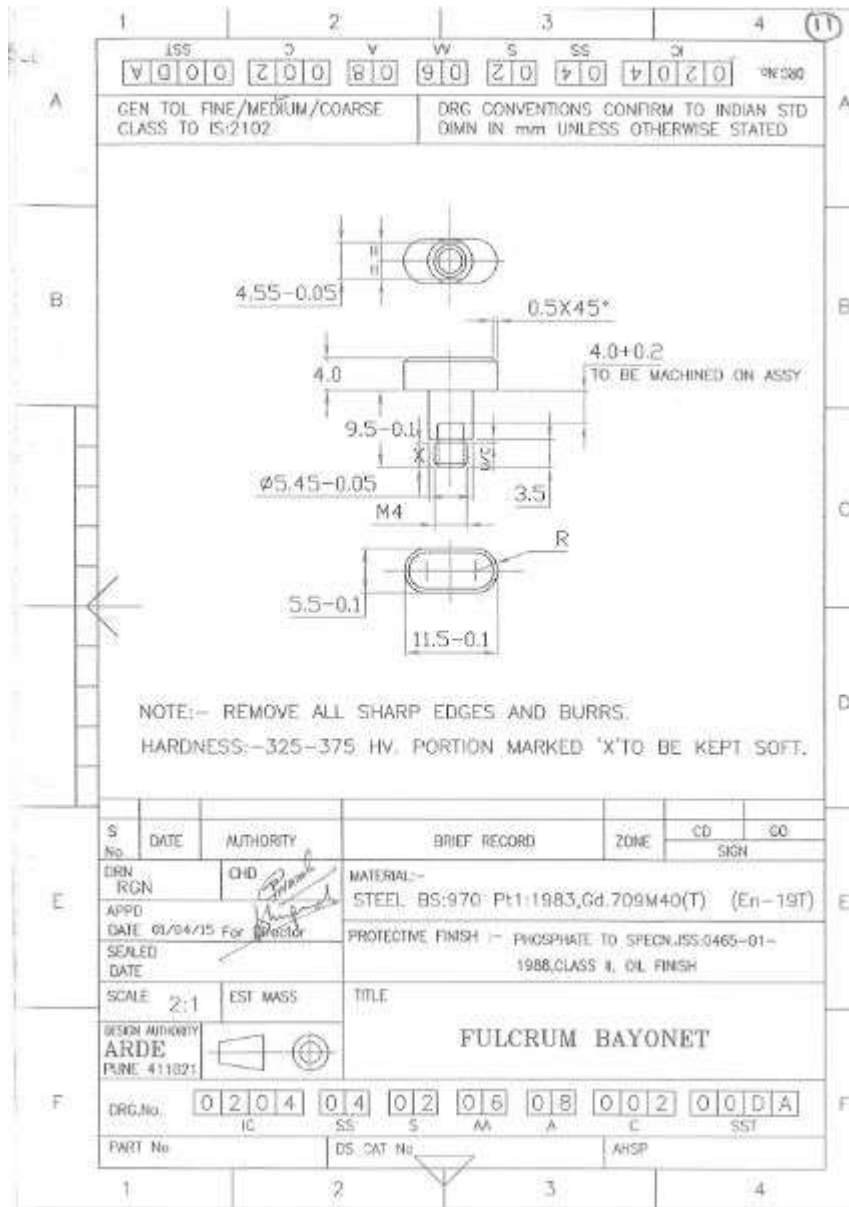
DR NO	DATE	AUTHORITY	BRIEF RECORD	ZONE	ED	GD	
DRN PRANAV	CRD	<i>Pranav</i>	MATERIAL			SIGN	
APPR DATE	<i>Pranav</i>	FOR DIRECTOR	PROTECTIVE FINISH				
SEALED DATE							
SCALE 2:1	EST HASS	TITLE <b>CUTTER ASSEMBLY BAYONET (RIVETING)</b>					
DESIGN AUTHORITY ARDE							
BRG NO	0204	04	02	03	06	0100 010DA	
	IC	SS	S	AA	B	E	SST
PART NO	DS CAT NO		AHSP				

(8)



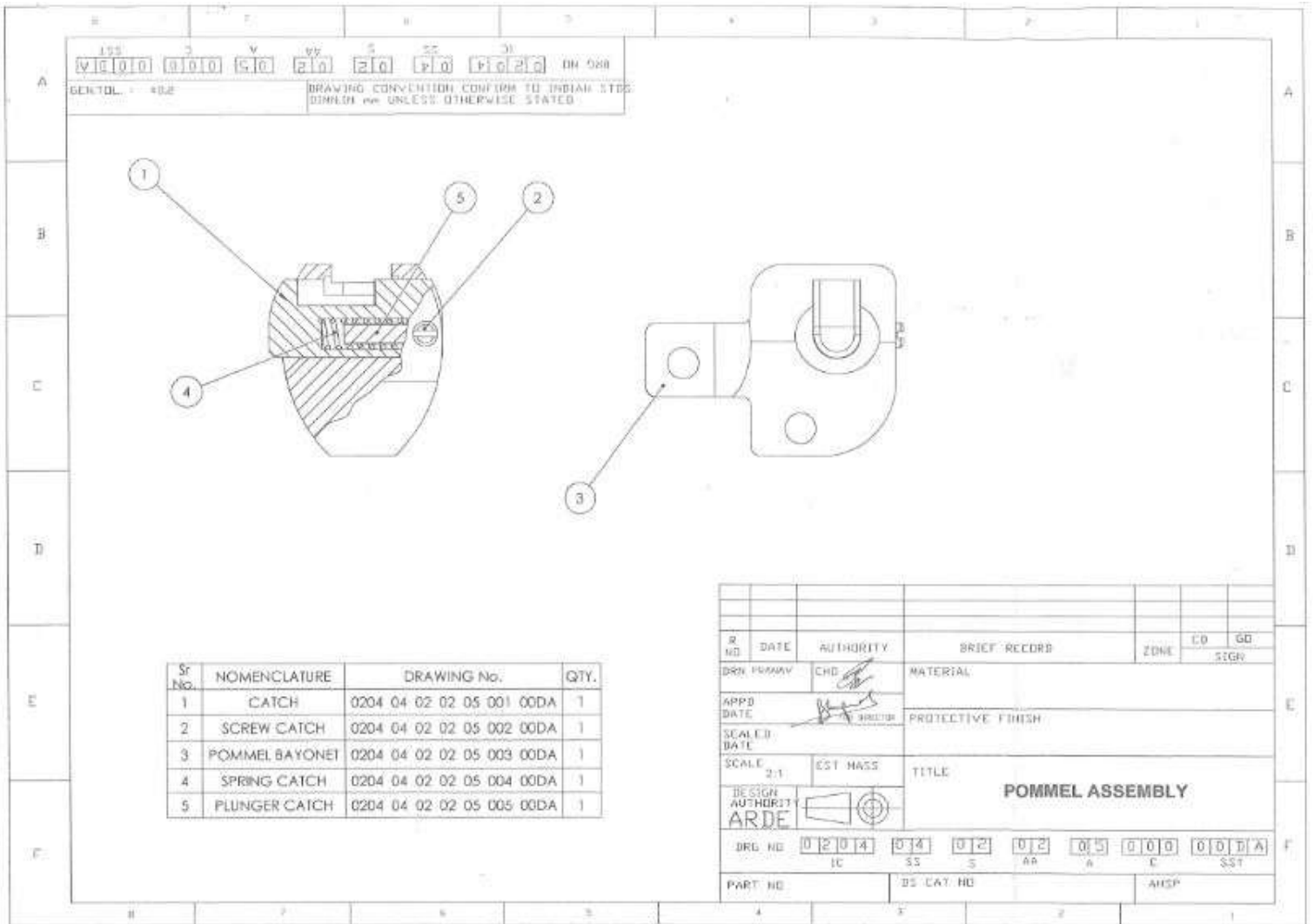


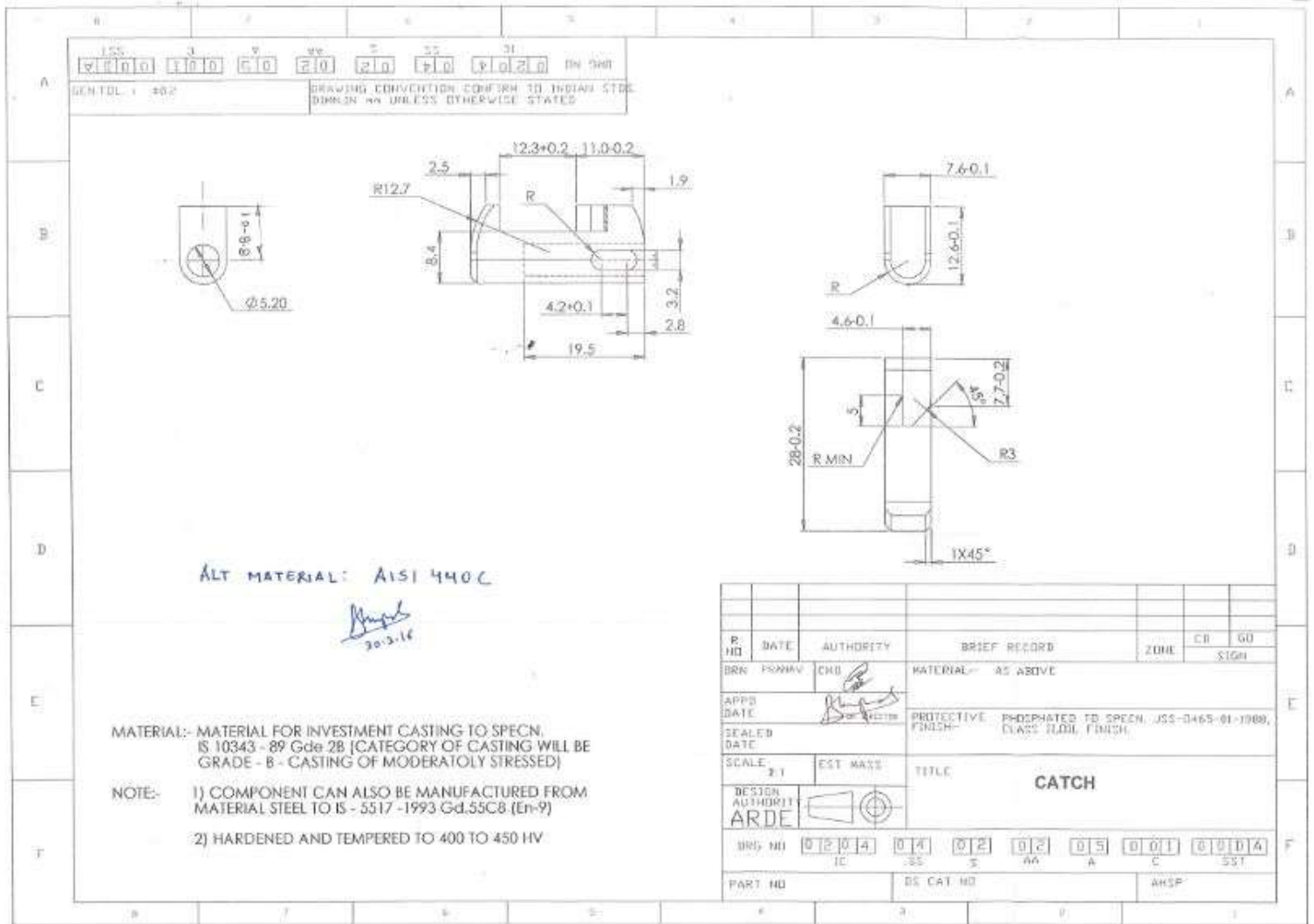
(11)











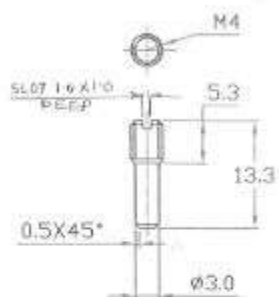

ALT MATERIAL: AISI 440C

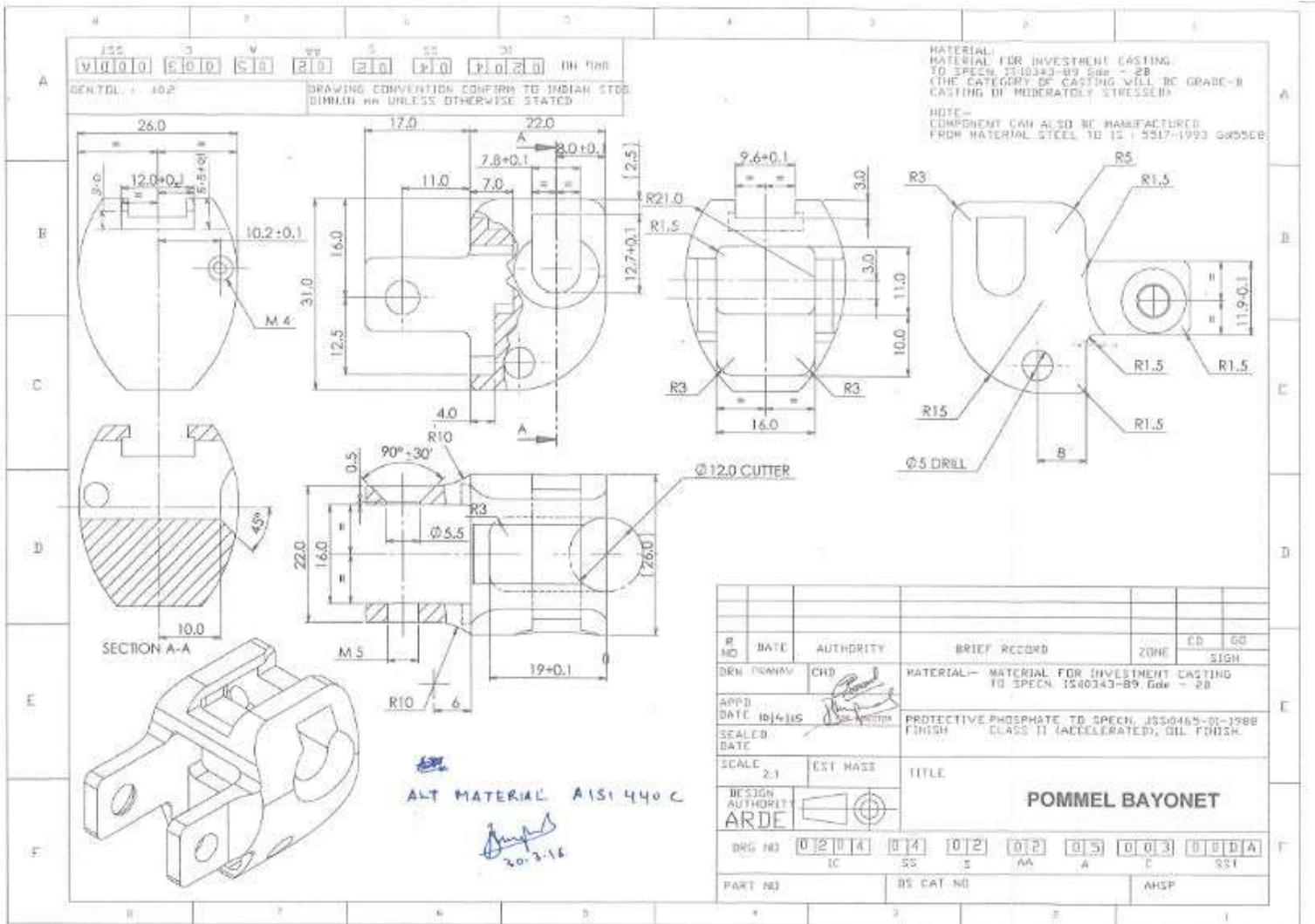
*Arde*  
30.3.16

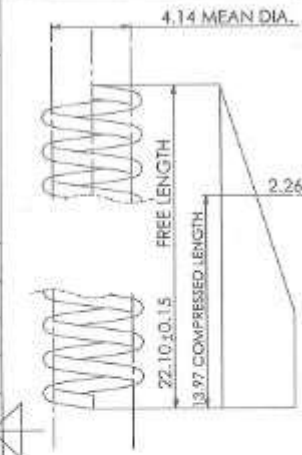
MATERIAL:- MATERIAL FOR INVESTMENT CASTING TO SPECN. IS 10343 - 89 Gde 2B (CATEGORY OF CASTING WILL BE GRADE - B - CASTING OF MODERATOLY STRESSED)

- NOTE:-
- 1) COMPONENT CAN ALSO BE MANUFACTURED FROM MATERIAL STEEL TO IS - 5517 - 1993 Gd.55C8 (En-9)
  - 2) HARDENED AND TEMPERED TO 400 TO 450 HV

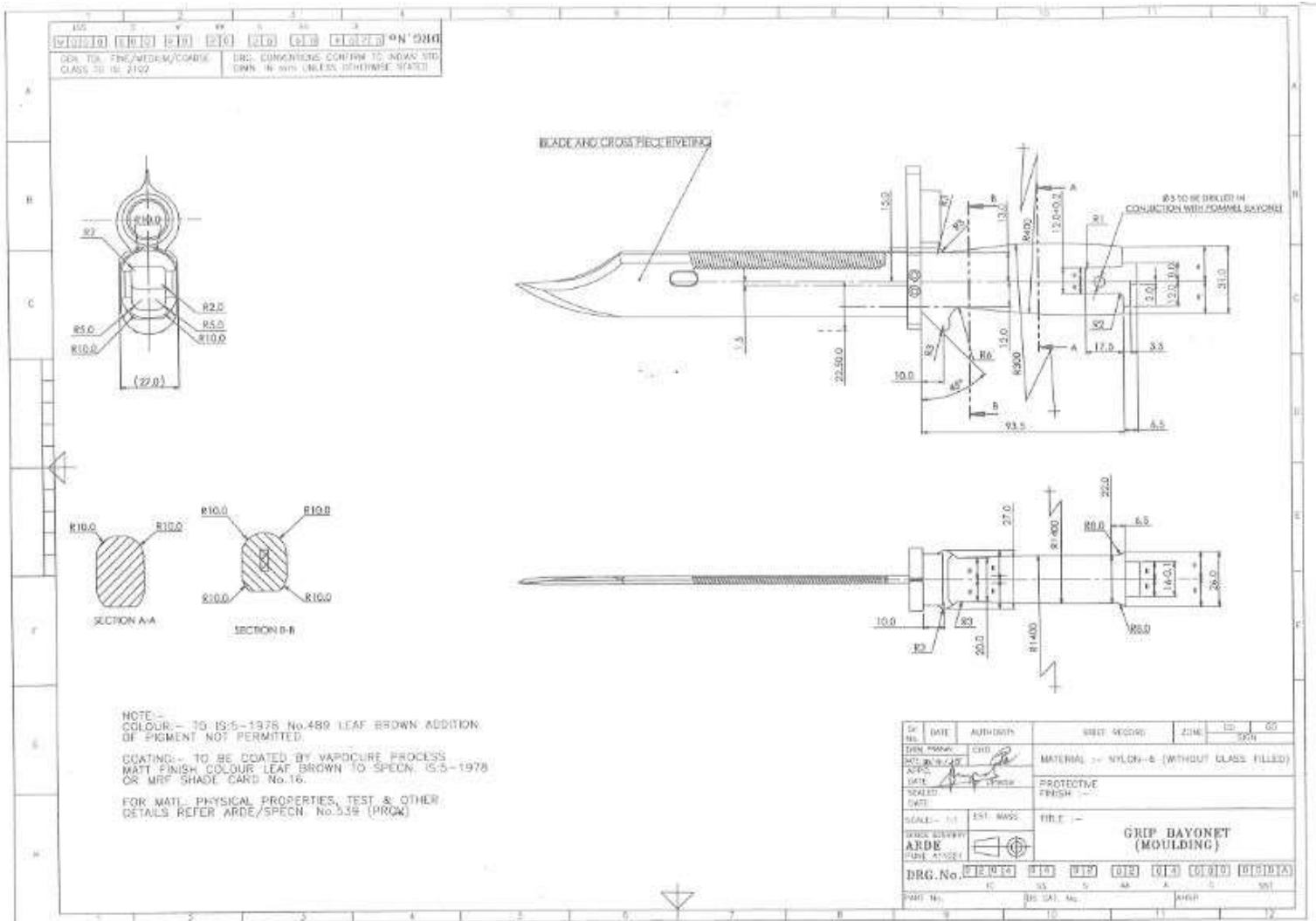
(18)

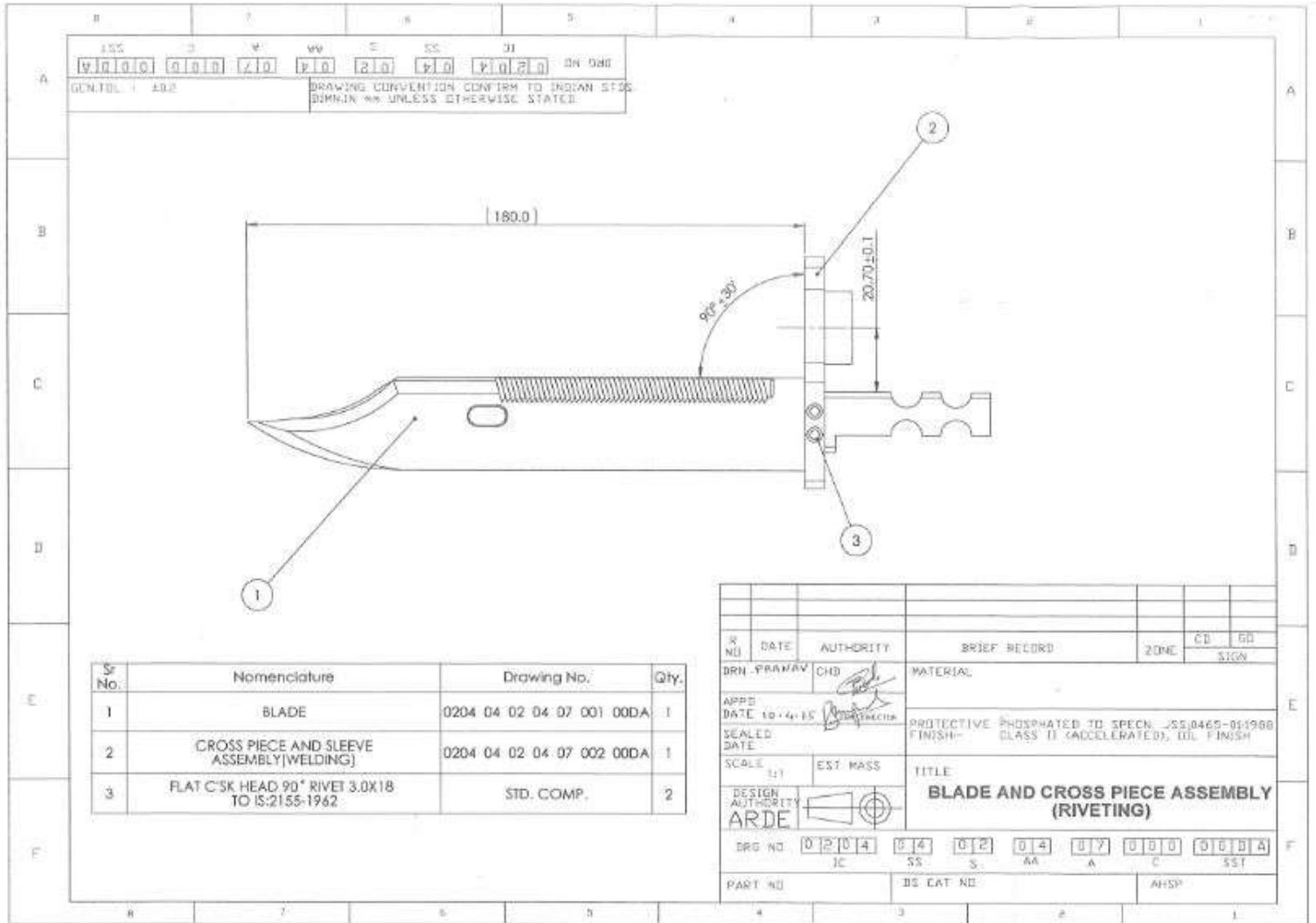
	1	2	3	4	(18)										
	ISS		0		V		W		S		SS		OI		DRN
	V000		Z000		S00		Z00		Z00		400		400		0000
A	GEN TOL FINE/MEDIUM/COARSE CLASS TO IS-2102						DRG CONVENTIONS CONFIRM TO INDIAN STD DIMN IN mm UNLESS OTHERWISE STATED						A		
B															
C															NOTE:- REMOVE ALL SHARP EDGES AND BURRS.
D															
E	S No		DATE		AUTHORITY		BRIEF RECORD				ZONE		CD GO		
	DRN RGN		CHD		MATERIAL:-				STEEL IS-4454 PL1-1983,Gd-080M40 (En-8)		SGN				
	APPD DATE 01/04/15		For Director		PROTECTIVE FINISH :- CHROME PLATED WITH DEPTH 0.010										
	SEALED DATE														
	SCALE 2:1		EST MASS		TITLE				SCREW CATCH						
	DESIGN AUTHORITY ARDE PUNE 411021														
F	DRG.No. 0204 04 02 02 05 002 000A														
	PART No		DS CAT No				AWSP								
	1	2	3	4											



1	2		3		4			
ISS	D	V	W	S	SS	DI		
V 0 0 0	D 0 0 0	C 0 0	W 0 0	S 0 0	SS 0 0	DI 0 0 0 0		
GEN TOL FINE/MEDIUM/COARSE CLASS TO IS:2102			DRG CONVENTIONS CONFIRM TO INDIAN STDS. DIMN IN mm UNLESS OTHERWISE STATED					
A						A		
B	<p><b>MATERIAL:-</b> IS:4454 Pt.1,2001 Gr DH</p> <p><b>ALT MATERIAL:-</b> IS:4454 Pt.1-2001 C01 Gr. DM WITH UTS VALUE MIN2320 N/mm2</p> <p><b>PROTECTIVE FINISH:-</b> PHOSPHATED TO SPECN. JSS 0465-01:1994 CLASS I SPIRIT STAIN BLACK OIL FINISH</p> <p>a) WIRE DIA:- 0.711 (22 SWG) b) NO. OF EFFECTIVE COIL 12 c) WOUND R.H d) LOADING STATIC</p> <p><b>NOTE:-</b> SPRING TO WORK FREELY IN ITS LOADED AND UNLOADED CONDITION IN A HOLE OF 5.16 DIA. &amp; OVER A ROD OF 3.25 DIA.</p>					B		
C						C		
D						D		
E	SR No	DATE	AUTHORITY	BRIEF RECORD	ZONE	CO	GO	
E	DIN PRWAY	CHD	MATERIAL			SIGN		
E	APPD	DATE	PROTECTIVE FINISH					
E	SEALED	DATE						
E	SCALE 3:1	EST MASS	FILE					
F	DRSN AUTHRY	ARDE	PUNE 411021	SPRING CATCH				
F	DRG No.	IC	SS	S	AA	A	C	SS1
F	PART No	RS CAT No	NHSP					
1	2		3		4			





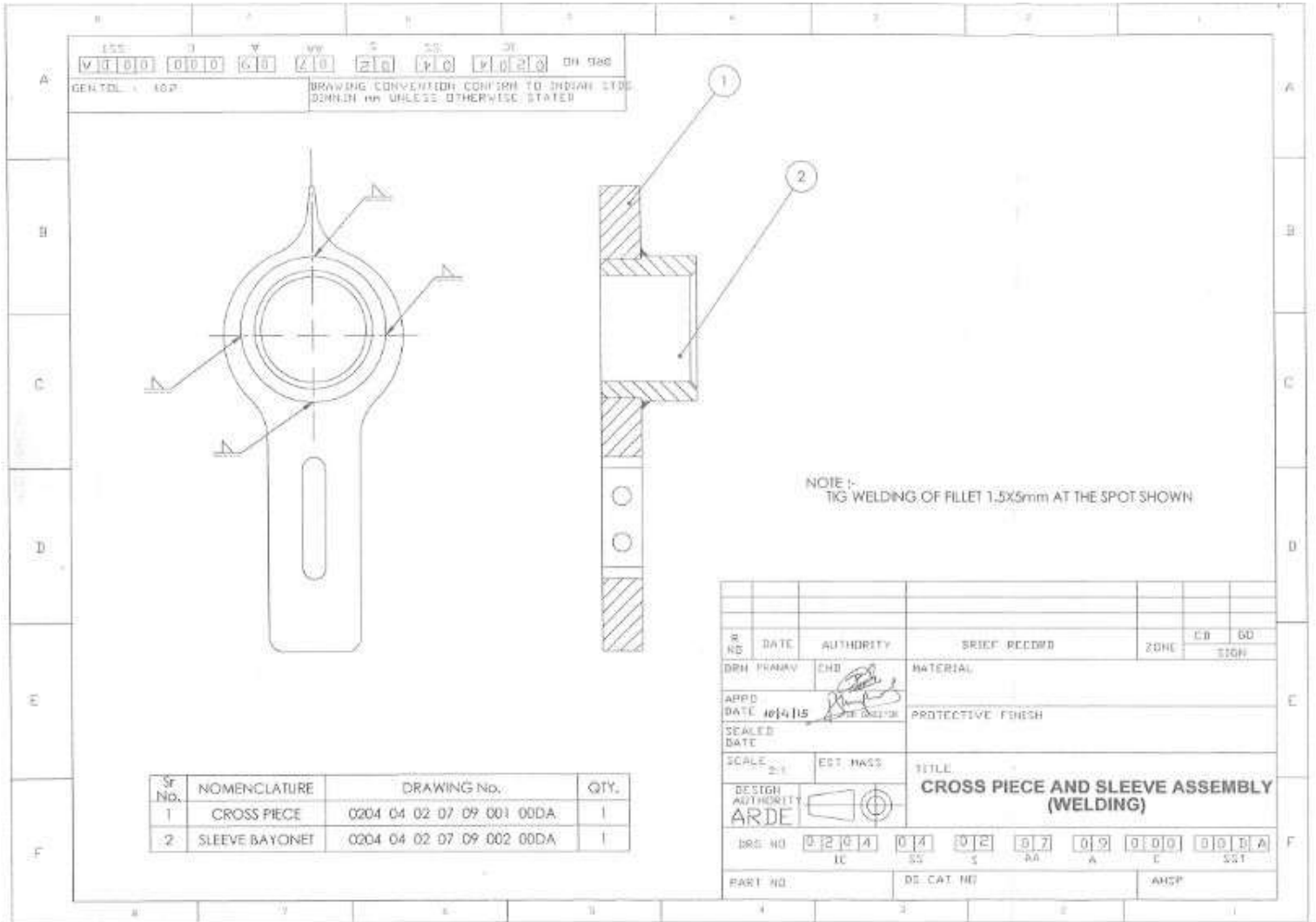


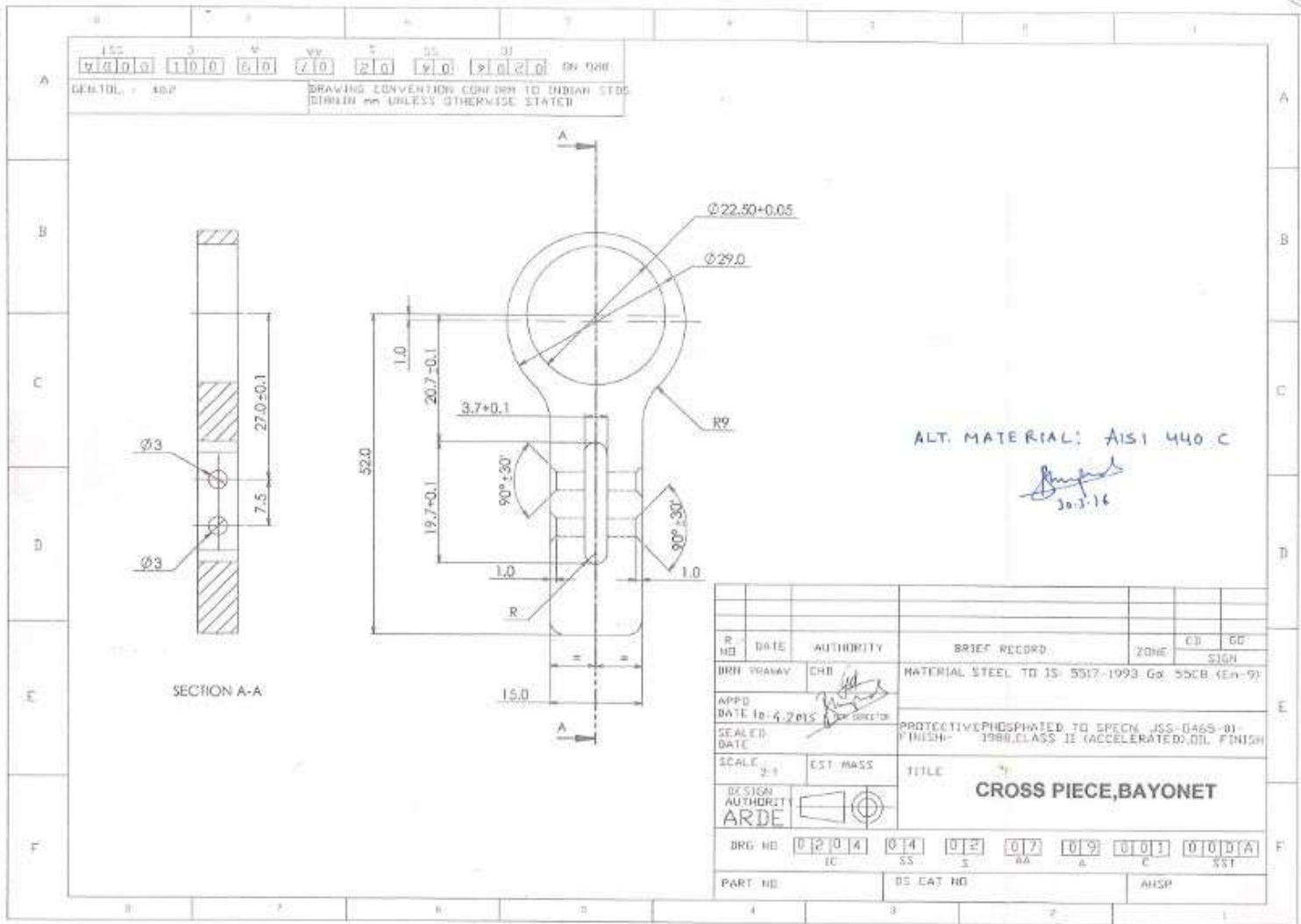
ISS 3 4 5 6 7 8 9 10 11 12 13 14 15 16 17 18 19 20 21 22 23 24 25 26 27 28 29 30 31 32 33 34 35 36 37 38 39 40 41 42 43 44 45 46 47 48 49 50 51 52 53 54 55 56 57 58 59 60 61 62 63 64 65 66 67 68 69 70 71 72 73 74 75 76 77 78 79 80 81 82 83 84 85 86 87 88 89 90 91 92 93 94 95 96 97 98 99 100  
GEN.TOL. 1 40.0 DRAWING CONVENTION CONFORM TO INDIAN STANDARDS UNLESS OTHERWISE STATED

Sr No.	Nomenclature	Drawing No.	Qty.
1	BLADE	0204 04 02 04 07 001 00DA	1
2	CROSS PIECE AND SLEEVE ASSEMBLY(WELDING)	0204 04 02 04 07 002 00DA	1
3	FLAT C'SK HEAD 90° RIVET 3.0X18 TO IS:2155-1942	STD. COMP.	2

SR NO.	DATE	AUTHORITY	BRIEF RECORD	ZONE	CD	SD
DRN - PRAKAV	CHD		MATERIAL			SIGN
APPR DATE 10-11-15			PROTECTIVE PHOSPHATED TO SPECN. -SS.0465-011900 FINISH- (CLASS II ACCELERATED), OIL FINISH			
SEALED DATE			TITLE			
SCALE 1:1	EST MASS		<b>BLADE AND CROSS PIECE ASSEMBLY (RIVETING)</b>			
DESIGN AUTHORITY ARDE						
DRG NO 0204 04 02 04 07 001 00DA	04 02 04 07 001 00DA	04 02 04 07 001 00DA	04 07 001 00DA	04 07 001 00DA	04 07 001 00DA	04 07 001 00DA
PART NO	BS CAT NO					AHSP







(28)

