

1 2 3 4 5 6 7 8

D. A. NO.

A

A

B

B

C

C

D

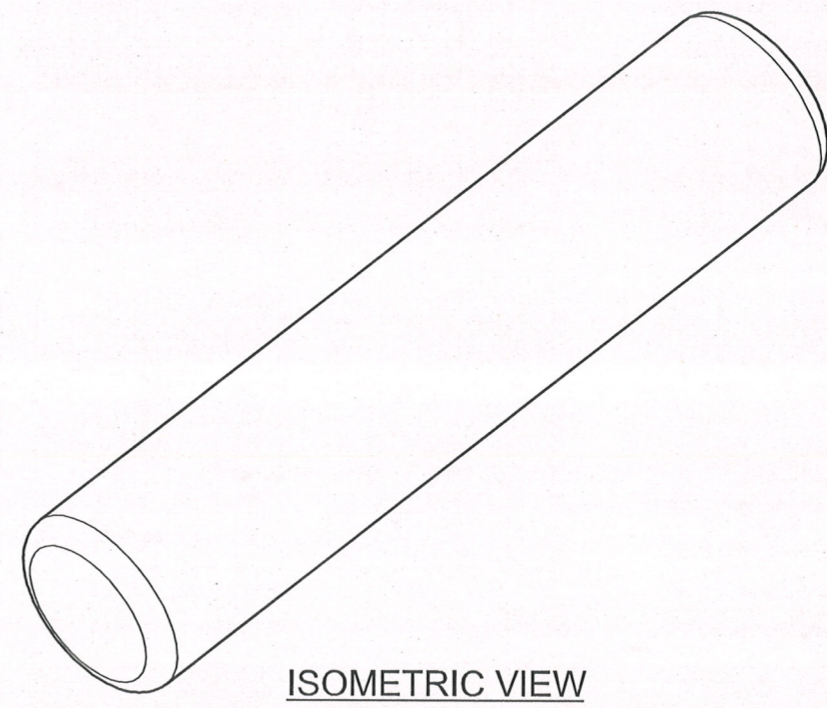
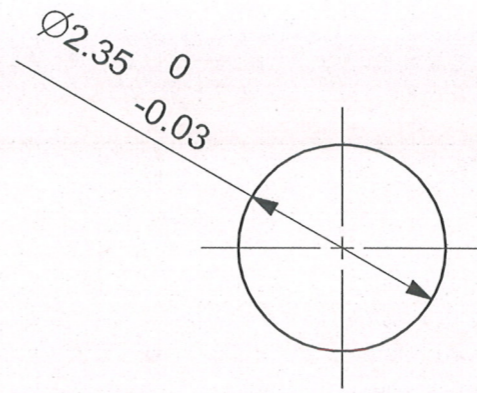
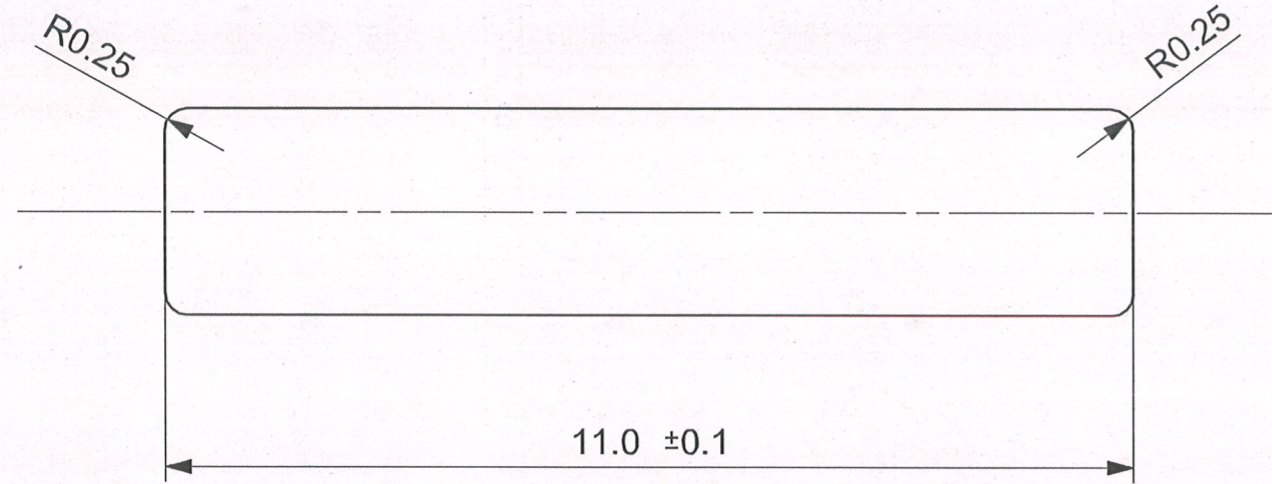
D

E

E

F

F



ISOMETRIC VIEW

MATERIAL:- STEEL BS970 Pt.1:1983 Gd.835M15 OR En-39B

ALT. MATERIAL:- STEEL BS970 Pt.1:1983 Gd.655M13 OR En-36B

HEAT TREATMENT:- HARDENED & TEMPERED TO 550 - 600 H.V.
WITH CASE DEPTH 0.13 TO 0.26 mm.

PROTECTIVE FINISH:-PHOSPHATED TO SPECN. J.S.S.-0465-01:1988
CLASS II (ACCELERATED) OIL FINISH.

DIMENSIONS ARE IN MM.

REVOLVER.32 (7.65 mm) SIDE SWING PIN TRIGGER PIVOT	DESIGNED BY	<i>A.S.RANA</i> A.S.RANA
	CHECKED BY	<i>JWM/DDO</i> JWM/DDO
	APPROVED BY	<i>WM/DDO</i> WM/DDO
	DATE	09.02.2019

SCALE 12 : 1

SMALL ARMS FACTORY
KANPUR

DRAWING NO.	RV-07/8 SW
SHEET	1 OF 1

1 2 3 4 5 6 7 8 A3