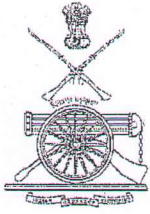


ON'DRG

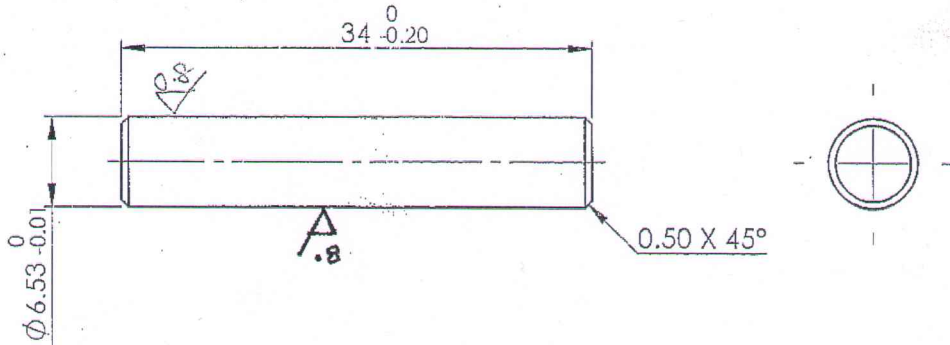
DIMENSIONS ARE IN mm.

UNTOLERATED DIMNS. AS PER IS : 2102 (MED)

MARK DRAWING No.



UT. CONTROLLED COPY
CERTIFIED CORRECT COPY OF APPROVED
DRAWINGS AT THIS DATE 31/7/23
DESIGN & DRAWING OFFICE,
ORDNANCE FACTORY, TIRUCHIRAPPALI - 620 016.



Material :

BS:970 Pt.1 1983 Sec.3 Gr.0709 M40 (EN19)
Alt. Matl.
BS:970 Pt.1 1983 Sec.3 Gr.0708 M40(EN19A)

Hardness: 370-430 HV

Protective Finish :

Accelerated Phospating to Specn.
JSS: 0465-01-1994 Class II Oil Finish

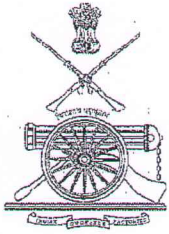
			SIGNATURE & DATE	SUB: Pin Fixing Barrel	SCALE
		TRACED			FOR: Receiver Assy
		DRAWN		OF: TRICHY ASSAULT RIFLE	Weight (g)
		CHECKED		DES. REF. NO. K-1011	8.76
		OIC/D&DO	<i>P. Fajh</i>	DRG. No.: K-1011	QPG
		OFFICER/PRODN.			1
		DIV. OFFICER/D&DO	<i>Se Kumar</i>		ORDNANCE FACTORY
AMENDMENTS	SIG. & DATE	APPROVED ON. 16/04/2018			TIRUCHIRAPPALI-- 16.
					SHEETS: 1
					SHEET No.: 1

DRG NO

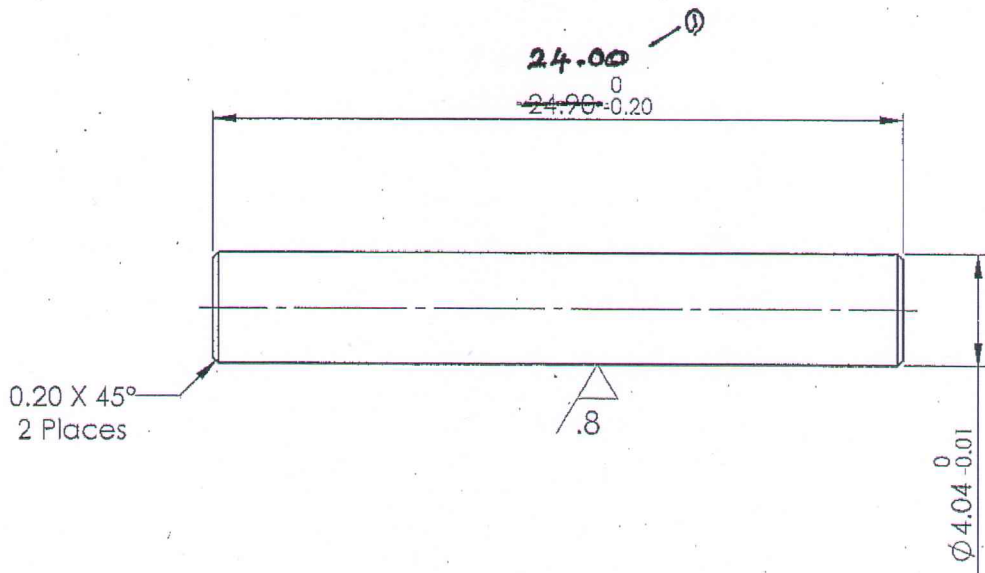
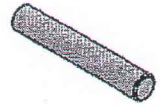
DIMENSIONS ARE IN mm.

UNTOLERATED DIMNS. AS PER IS : 2102 (MED)

MARK DRAWING No.



UNCONTROLLED COPY
CERTIFIED CORRECT COPY OF APPROVED
DRAWINGS AT THIS DATE: 31/7/23
DESIGN & DRAWING OFFICE,
ORDNANCE FACTORY, TIRUCHIRAPPALI - 620 016.



Material :

Steel

BS:970 Pt.1 1983 Gr.708 M40 (or) EN19A

BS:970 Pt.1 1983 Gr.709 M40 (or) EN19

BS:970 Pt.1 1983 Sec.3 Gr.080 M40 (or) EN8, 8A,8B, 8C,8D

BS:970 Pt.1 1983 Sec.3 Gr.070 M55 (or) EN9

Hardness: 340-400 HV

Protective Finish :

Accelerated Phospating to Specn.

JSS: 0465-01-1994 Class II Oil Finish

DA-NO. 21/19 Dt. 10.7.19 AMENDMENTS	SIG. & DATE <i>[Signature]</i>		SIGNATURE & DATE.	SUB: Pin Rear Sight Block FOR: Receiver Assy OF: TRICHY ASSAULT RIFLE DES. REF. NO. K-1203 DRG. No.: TAR-K-1203*	SCALE NTS
		TRACED			QPG 1
		DRAWN			Weight (g) 2.49
		CHECKED			SHEETS: 1
		OIC/D&DO <i>P. Fortu</i>			SHEET No.: 1
OFFICER/ PRODN.					
DIV. OFFICER/ D&DO <i>[Signature]</i>					
		APPROVED ON. 20/03/2018.			

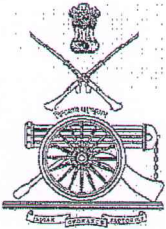


DRG NO.

DIMENSIONS ARE IN mm.

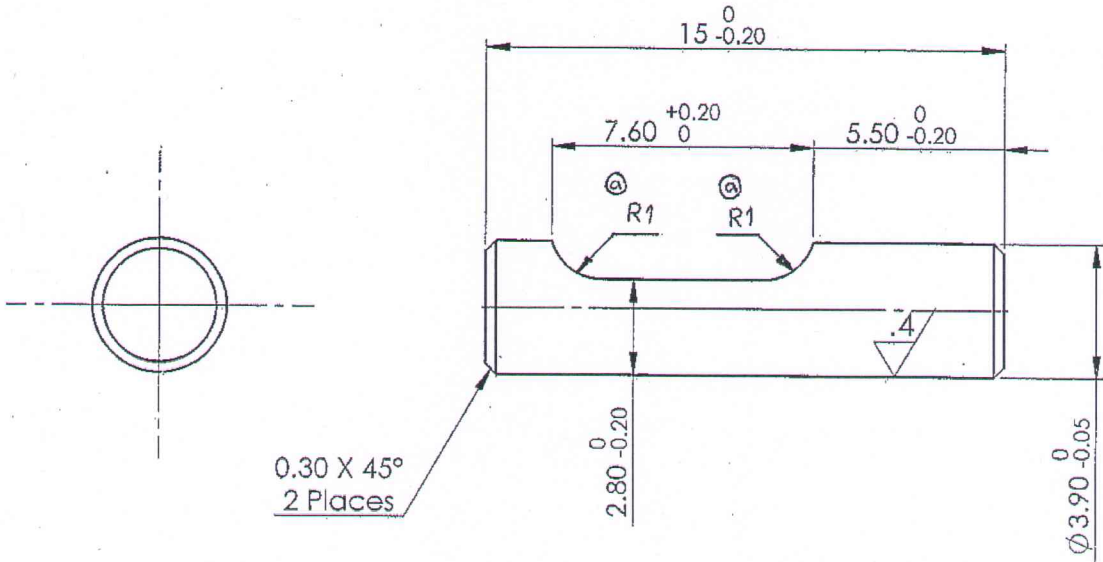
UNTOLERATED DIMNS. AS PER IS : 2102 (MED)

MARK DRAWING No.



UNCONTROLLED COPY
CERTIFIED CORRECT COPY OF APPROVED
DRAWINGS AT THIS DATE. 31/7/23

DESIGN & DRAWING OFFICE,
ORDNANCE FACTORY, TIRUCHIRAPPALI-620 016.



Material :

Steel

BS:970 Pt.1 1983 Gr.708 M40 (or) EN19A

BS:970 Pt.1 1983 Gr.709 M40 (or) EN19

Hardness: 300-350 HV

Protective Finish :

Accelerated Phosphating to Specn.

JSS: 0465-01-1994 Class II Oil Finish



SIGNATURE &
DATE.

TRACED

DRAWN

CHECKED

OIC/D&DO

OFFICER/
PRODN.

DIV.OFFICER/
D&DO

APPROVED ON. 01/11/2017

SUB: **Lock Compensator**

FOR: Receiver Assy

OF: TRICHY ASSAULT RIFLE

DES.REF.NO. K-1209

DRG. No.: TAR-K-1209

FT ORDNANCE FACTORY
TIRUCHIRAPPALLI-16.

SCALE

NTS

QPG

1

Weight (g)

1.25

SHEETS: 1

SHEET No.: 1

DA.No. 45/18
S.No. 1
Dr. 21/9/18

SIG. & DATE

P. Jayar

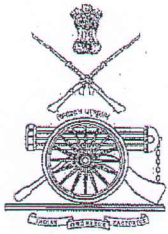
Se. Kumar
27 Nov 17

AMENDMENTS

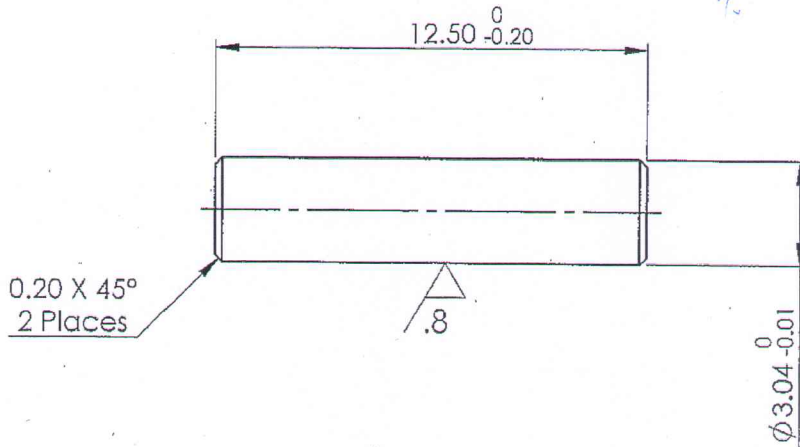
SIG. & DATE

DRG NO.

DIMENSIONS ARE IN mm.
 UNTOLERATED DIMNS. AS PER IS : 2102 (MED)
 MARK DRAWING No.



UNCONTROLLED COPY
 CERTIFIED CORRECT COPY OF APPROVED
 DRAWINGS AT THIS DATE: 31/7/23
 DESIGN & DRAWING OFFICE,
 ORDNANCE FACTORY, TIRUCHIRAPPALI-620 016.



Material :

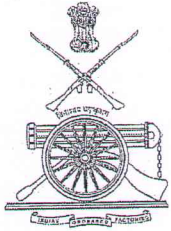
Steel
 BS:970 Pt.1 1983 Gr.708 M40 (or) EN19A
 BS:970 Pt.1 1983 Gr.709 M40 (or) EN19
 BS:970 Pt.1 1983 Sec.3 Gr.080 M40 (or) EN8, 8A,8B, 8C,8D
 BS:970 Pt.1 1983 Sec.3 Gr.070 M55 (or) EN9

Hardness: 340-400 HV

Protective Finish :

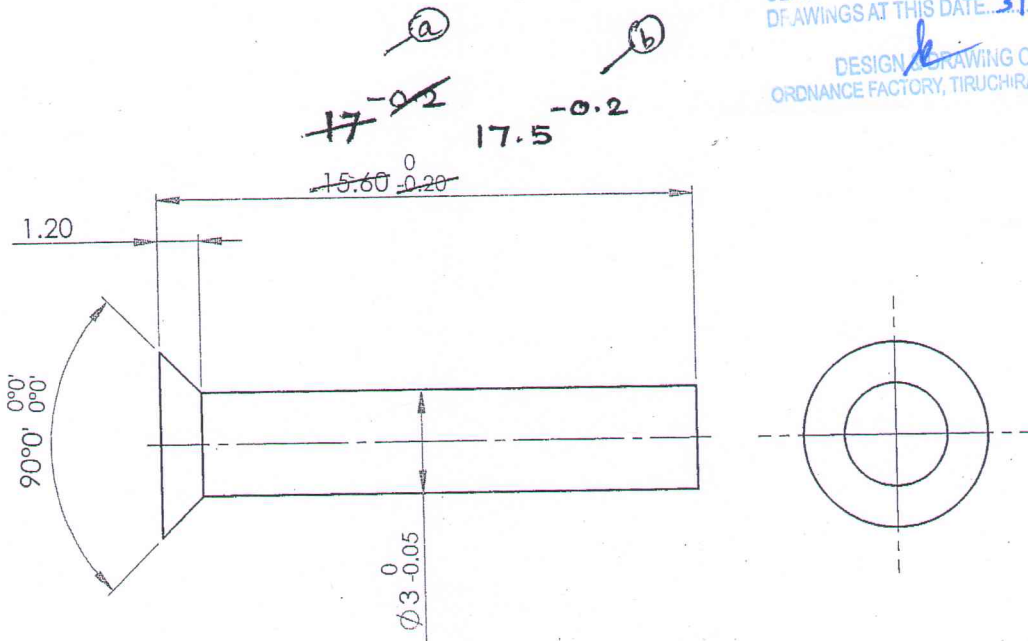
Accelerated Phospating to Specn.
 JSS: 0465-01-1994 Class II Oil Finish

AMENDMENTS	SIG. & DATE		SIGNATURE & DATE.	SUB. Pin Front Sight Block, Gas Port Block FOR: Receiver Assy OF: TRICHY ASSAULT RIFLE DES. REF. NO. K-1211	SCALE NTS
		TRACED			QPG 4
		DRAWN			Weight (g) 0.70
		CHECKED		DRG. No.: TAR-K-1211	SHEETS: 1
		OIC/D&DO	<i>P. Taylor</i>	ORDNANCE FACTORY TIRUCHIRAPPALI-16.	SHEET No.: 1
		DIV. OFFICER/ D&DO	<i>Se. K...</i>		
APPROVED ON. 20/03/2018					



All dimensions are in mm
Un tollerated dimensions as per IS:2102 (Med)

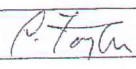
UN CONTROLLED COPY
CERTIFIED CORRECT COPY OF APPROVED
DRAWINGS AT THIS DATE 31/7/23
DESIGN DRAWING OFFICE,
ORDNANCE FACTORY, TIRUCHIRAPPALI - 620 016.



Material : Steel BS:970 Pt.1 1983 Gr.826 M31 (OR) EN25
Steel BS:970 Pt.1 1983 Gr.708 M40 (OR) EN19A
Steel BS:970 Pt.1 1983 Gr.709 M40 (OR) En19

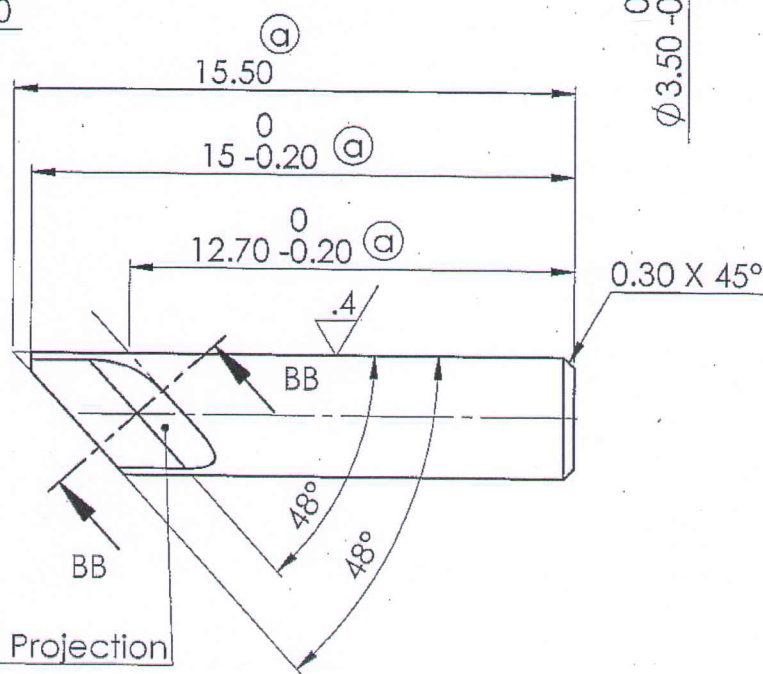
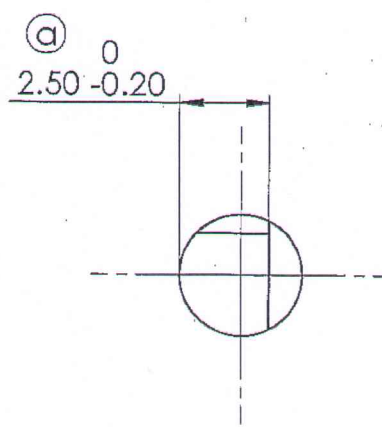
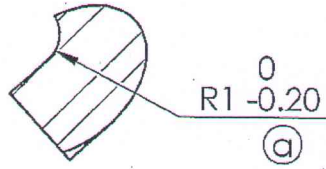
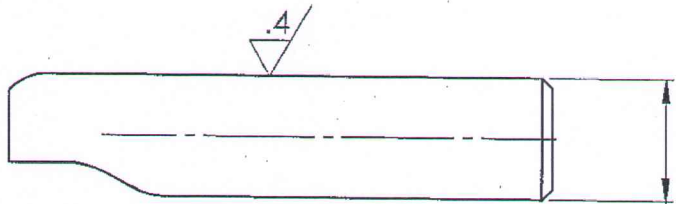
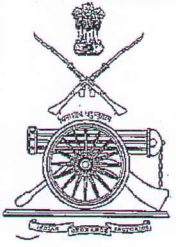
Hardness: 240 - 310 HV

Protective Finish :
Phosphate to Specn. JSS:0465-01:1988
Class-II (Accelerated), Oil Finish

(b) DA.No. 03/2023 Dt. 20/04/2023 (a) DA.No. 25/22 Dt. 28/03/22 AMENDMENTS	SIG. & DATE	 OIC/D&DO	SIGNATURE & DATE.	SUB: PIN GAS PISTON	SCALE NTS
		OFFICER/PRODN.	TRACED	FOR: Bolt Carrier Assy.	Qpg 1
		DIV.OFFICER D&DO	DRAWN	OF: TRICHY ASSAULT RIFLE	Weight (g) 0.93
		APPROVED ON. 01/11/2017	CHECKED	DES.REF.NO. K-2003	DRG. No.: K-2003 * 2
		FT	OIC/D&DO	APPROVED ON. 01/11/2017	ORDNANCE FACTORY TIRUCHIRAPPALI-16.

DRG NO.

DIMENSIONS ARE IN mm.
 UNTOLERATED DIMNS. AS PER IS : 2102 (MED)
 MARK DRAWING No.



R1
 -0.2
 Not in Projection

UNCONTROLLED COPY
 CERTIFIED CORRECT COPY OF APPROVED
 DRAWINGS AT THIS DATE 31/7/23
 DESIGN & DRAWING OFFICE,
 ORDNANCE FACTORY, TIRUCHIRAPPALLI -620 016.

Material :
 Steel
 BS:970 Pt.1 1983 Gr.708 M40 (or) EN19A
 BS:970 Pt.1 1983 Gr.709 M40 (or) EN19
 BS:970 Pt.1 1983 Sec.3 Gr.080 M40 (or) EN8, 8A, 8B, 8C, 8D
 BS:970 Pt.1 1983 Sec.3 Gr.070 M55 (or) EN9

Hardness: 340 - 400 HV

Protective Finish :
 Accelerated Phosphating to Specn. JSS: 0465-01-1994
 Class II Oil Finish

Pilot Sample to be get approved before bulk production

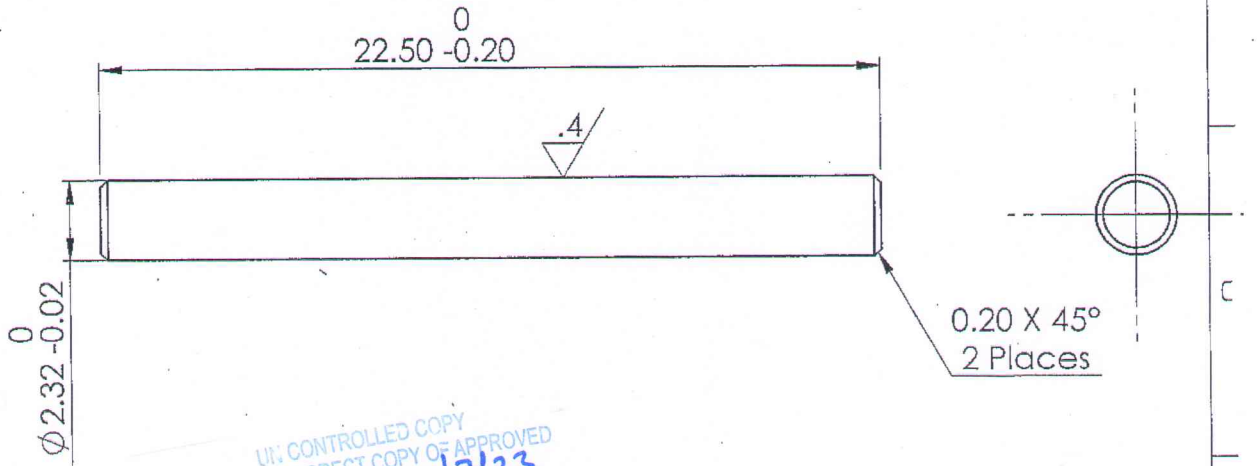
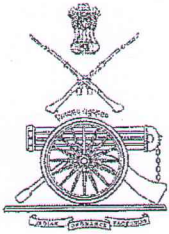
(a)	DA:26/19 Dt.30/07/2019.	P. Toth	SIGNATURE & DATE.	SUB: Pin Extractor	SCALE NTS
	AMENDMENTS	SIG. & DATE	APPROVED ON. 12/04/2018	FOR: Bolt Assy K-2010	QPG 1
				OF: TRICHY ASSAULT RIFLE	Weight (g) 1.03
				DES. REF. NO. K-2014	SHEETS: 1
				DRG. No.: TAR-K-2014*	SHEET No.: 1
			(FT) ORDNANCE FACTORY TIRUCHIRAPPALLI-16.		

ON'DRG

DIMENSIONS ARE IN mm.

UNTOLERATED DIMNS. AS PER IS : 2102 (MED)

MARK DRAWING No.



UNCONTROLLED COPY
 CERTIFIED CORRECT COPY OF APPROVED
 DRAWINGS AT THIS DATE: 31/7/23
 DESIGN & DRAWING OFFICE,
 ORDNANCE FACTORY, TIRUCHIRAPPALLI - 620 016.

Material :

Steel
 BS:970 Pt.1 1983 Gr.708 M40 (or) EN19A ✓
 BS:970 Pt.1 1983 Gr.709 M40 (or) EN19 ✓
 BS:970 Pt.1 1983 Sec.3 Gr.080 M40 (or) EN8, 8A,8B, 8C,8D
 BS:970 Pt.1 1983 Sec.3 Gr.070 M55 (or) EN9

Hardness: 340 - 400 HV

Protective Finish :

Accelerated Phosphating to Specn. JSS: 0465-01-1994
 Class II Oil Finish

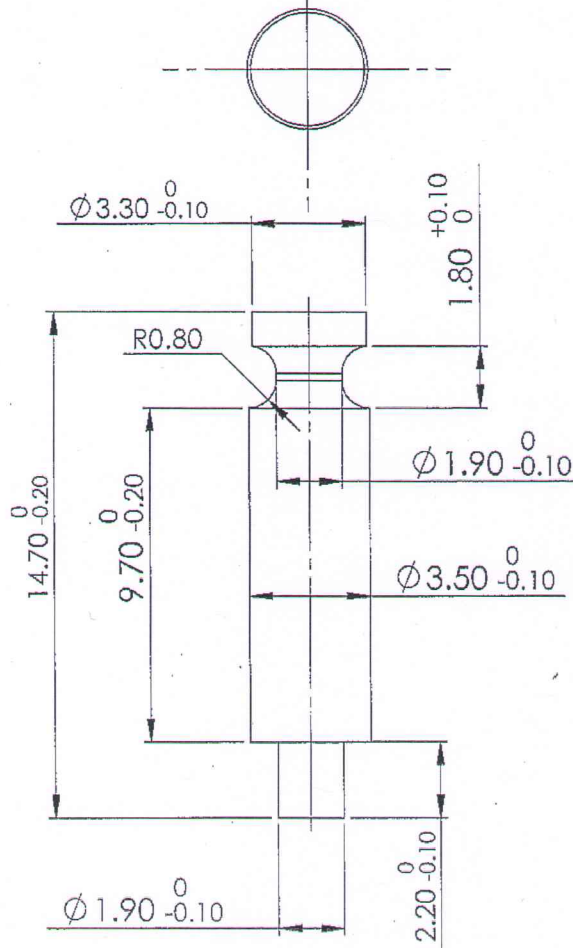
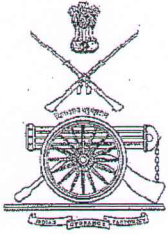
AMENDMENTS	SIG. & DATE		SIGNATURE & DATE.	SUB: Pin Retaining Firing Pin	SCALE NTS
		TRACED		FOR: Bolt Assy K-2010	QPG 1
		DRAWN		OF: TRICHY ASSAULT RIFLE	Weight(g) 0.74
		CHECKED		DES.REF.NO. K-2016	SHEETS: 1
		OIC/D&DO	<i>P. Taran</i>	DRG. No.: TAR-K-2016	SHEET No.: 1
		OFFICER/PRODN.		ORDNANCE FACTORY TIRUCHIRAPPALLI-16.	
		DIV.OFFICER/D&DO	<i>Ge K...u</i>		
		APPROVED ON. 18/04/2018.			

DRG NO.

DIMENSIONS ARE IN mm.

UNTOLERATED DIMNS. AS PER IS : 2102 (MED)

MARK DRAWING No.



UT: CONTROLLED COPY
 CERTIFIED CORRECT COPY OF APPROVED
 DRAWINGS AT THIS DATE. 31/7/23
 DESIGN & DRAWING OFFICE,
 ORDNANCE FACTORY, TIRUCHIRAPPALI - 620 016.

Material :

Steel

BS:1429 -1980 Gr.070 A72 ND

BS:970 Pt.1 1983 Gr.708 M40 (or) EN19A

BS:970 Pt.1 1983 Gr.709 M40 (or) EN19

BS:970 Pt.1 1983 Sec.3 Gr.080 M40 (or) EN8, 8A,8B, 8C,8D

BS:970 Pt.1 1983 Sec.3 Gr.070 M55 (or) EN9

Hardness: 340-400 HV

Protective Finish :

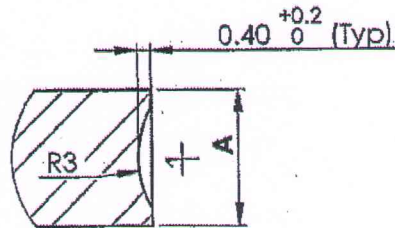
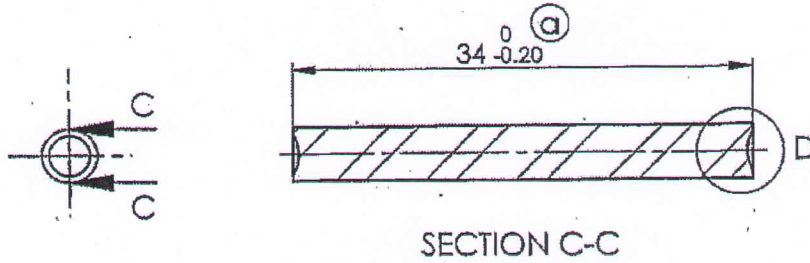
Accelerated Phosphating to Specn.

JSS: 0465-01-1994 Class II Oil Finish

	SIGNATURE & DATE.	SUB: Pin Tension Spring	SCALE NTS
	TRACED	FOR: Receiver Assy	QPG 1
	DRAWN	OF: TRICHY ASSAULT RIFLE	Weight 10.01
	CHECKED	DES. REF. NO. K-4006	SHEETS: 1
	OIC/D&DO <i>P. Forta</i>	DRG. No.: TAR-K-4006	SHEET No.: 1
	OFFICER/PRODN.	ORDNANCE FACTORY TIRUCHIRAPPALLI-16.	
DIV. OFFICER/D&DO <i>Ge. Kumar</i>			
AMENDMENTS	SIG. & DATE	APPROVED ON. 12/04/2018.	

DRG NO

DIMENSIONS ARE IN mm.
 UNTOLERATED DIMNS. AS PER IS : 2102 (MED)
 MARK DRAWING No.



UNCONTROLLED COPY
 CERTIFIED CORRECT COPY OF APPROVED
 DRAWINGS AT THIS DATE 31/7/23
 DESIGN & DRAWING OFFICE,
 ORDNANCE FACTORY, TIRUCHIRAPPALI - 620 016.

Material :

Steel
 BS:1429 - 1980 Gr.070 A72 NS (or) EN42
 BS:970 Pt.1 1983 Sec.3 Gr.708 M40 (or) EN19A
 BS:970 Pt.1 1983 Sec.3 Gr.709 M40 (or) EN19

Hardness: 340-400 HV

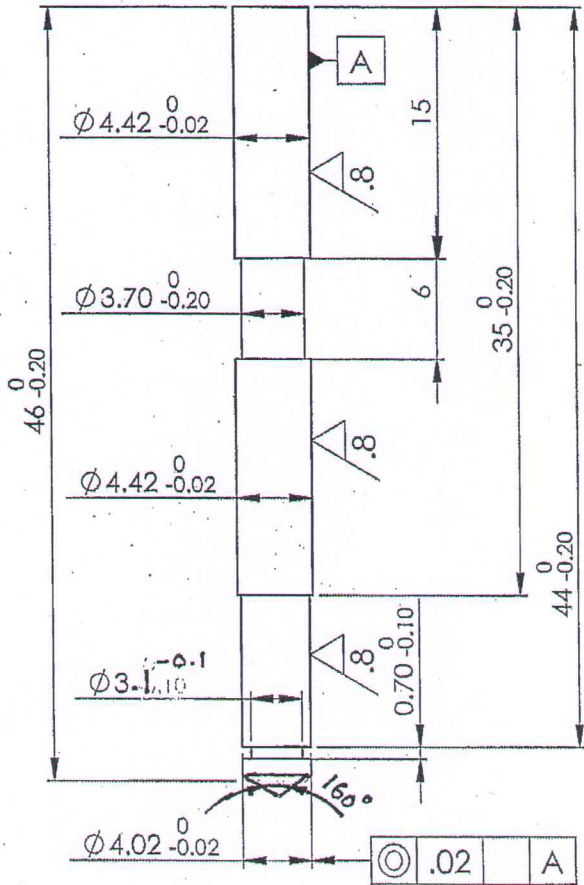
Protective Finish :

Phospating to Specn. 0465-01-1994 Class II
 Oil Finish

Bluf Sharp Edges

Group	A
1	4.03-0.03
2	4.06-0.03

(a) Design Modified	SIG. & DATE	SIGNATURE & DATE.	SUB: Pin Fixing Trunnion	SCALE NTS
	AMENDMENTS	APPROVED ON. 18/06/2018	FOR: Receiver Assy	QPG 2
			OF: TRICHY ASSAULT RIFLE	Weight 13.36
			DES. REF. NO. K-4008	SHEETS: 1
			DRG. No.: TAR-K-4008	SHEET No.: 1
		(FT) ORDNANCE FACTORY TIRUCHIRAPPALI-16.		

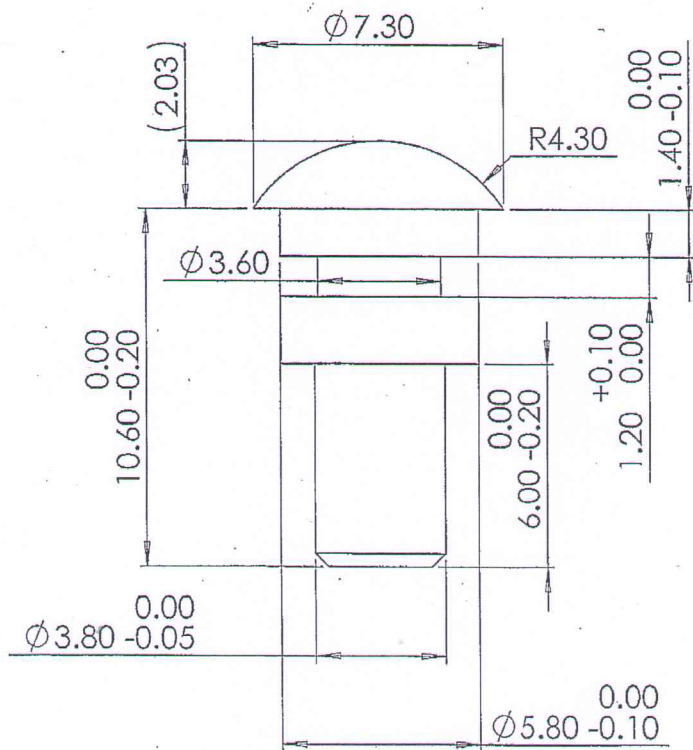


UI: CONTROLLED COPY
 CERTIFIED CORRECT COPY OF APPROVED
 DRAWINGS AT THIS DATE. 31/3/23
 DESIGN & DRAWING OFFICE,
 ORDNANCE FACTORY, TIRUCHIRAPPALLI-620 016.

Material: BS 970 Pt-1, 1983 709M40 (EN-19)		DWG Details		SUB: Hinge Pin	
	3rd Angle	SIGN	DATE.		
Alt. Material: BS 970 Pt-1, 1983 708M40 (EN-19A)	DRAWN			FOR: Trunnion Assy	
	CHECKED			PROJ.: TRICHY ASSAULT RIFLE	
Hardness: 350-400 HV	HOS/D&DO			Design Ref : K-4003-EXP	
	Div. Officer Prodn			All Dimensions are in mm	
Finish: Phosphating to JSS:0465-01- 1994, Class-II OIL finish	Div. Officer QC			DWG. No.: K - 4015	A4
	Div. Officer DDO			QPG - 1	
Un tolerated dimensions IS:2102 Medium				Wt. 5.03 gm (Appx)	
				SHEET: 1 OF 1	



ORDNANCE FACTORY
 TIRUCHIRAPPALLI-16.



UN CONTROLLED COPY
 CERTIFIED CORRECT COPY OF APPROVED
 DRAWINGS AT THIS DATE... 31/7/23
 DESIGN & DRAWING OFFICE,
 ORDNANCE FACTORY, TIRUCHIRAPPALI - 620 016.

Material: BS 970 Pt-1, 1983 080M40 (EN-8)		DWG Details		SUB: Pivot Pin	
	3rd Angle	SIGN	DATE.		
Alt. Material: BS 970 Pt-1, 1983 709M40 (EN-19)	DRAWN			FOR: Receiver Assy	Do not scale Drawing
	CHECKED			PROJ.: TRICHY ASSAULT RIFLE	
Hardness: 400-450HV	HOS/D&DO			Design Ref K-4009-Exp	All Dimensions are in mm
	Div. Officer Prodn			DWG. No.: K-4017	A4 QPG - 1
Finish: Phosphating to JSS:0465-01- 1994, Class-II OIL finish	Div. Officer QC			ORDNANCE FACTORY TIRUCHIRAPPALI-16.	Wt. 1.68 (Appx) gm
	Div. Officer DDO				
Un tollerated dimensions IS:2102 Medium					SHEET: 1 OF 1