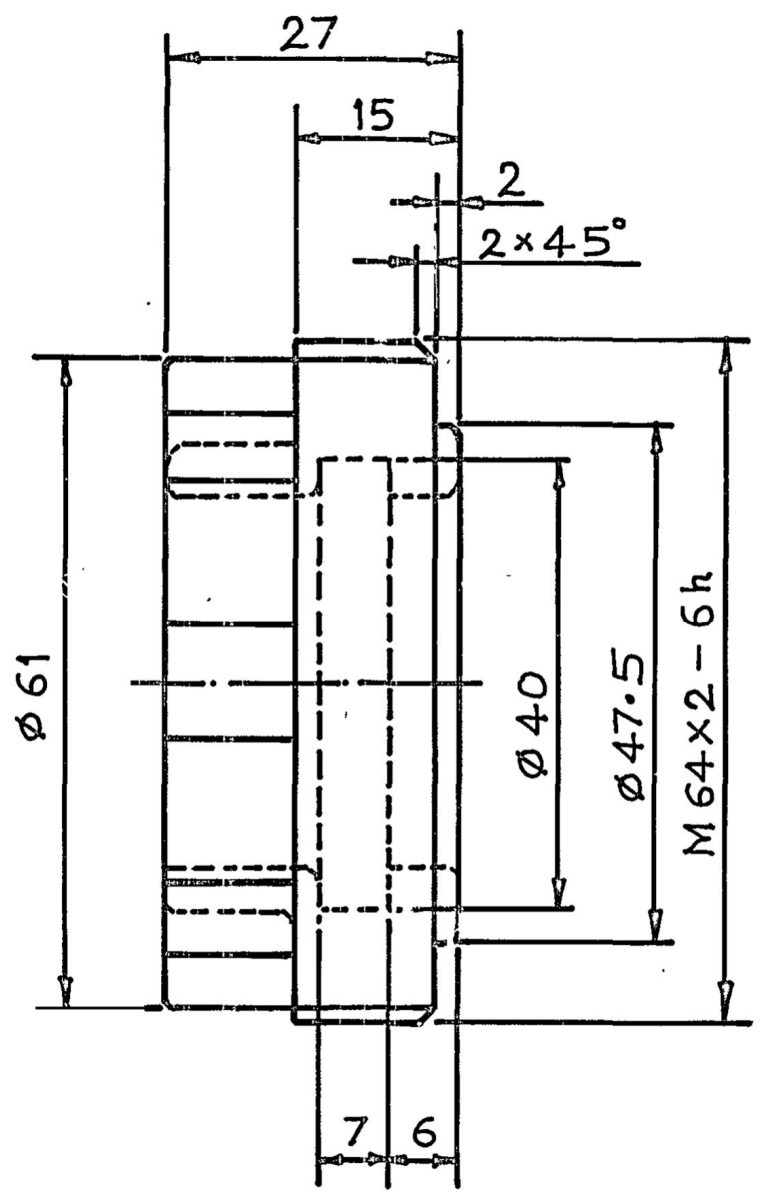
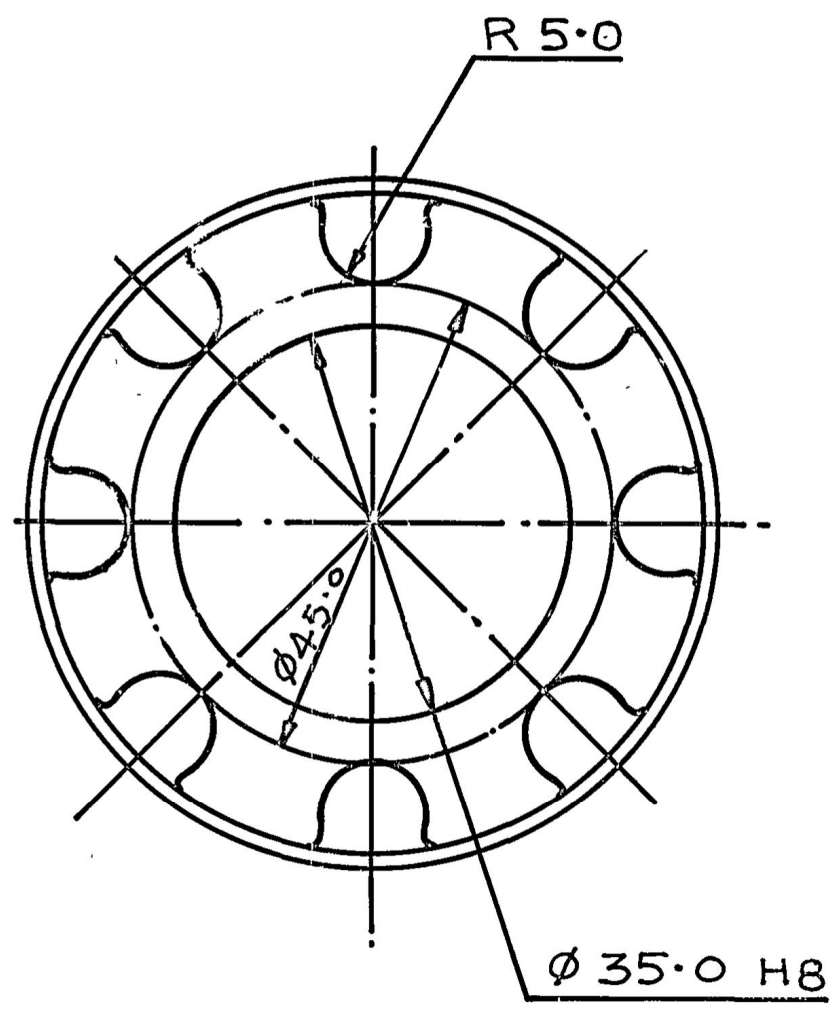


4 3 2 1
 D.S. CAT No. 4730-006960
 FOR EXPLANATION OF DIMENSIONING ETC. SEE ARDE NOTE SHT. No. 1,
 DIMENSIONS ARE IN mm, UNLESS OTHERWISE STATED.

NOM. SIZE & FIT	DEVIATION
∅35.0 H8	+0.039 0



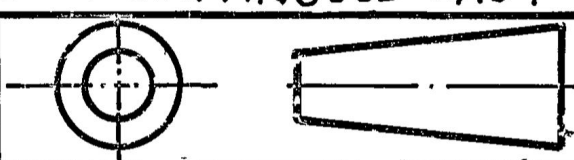
THREAD CONFORM TO IS: 4218.



28-06-17	1960T-W	MATL AMENDED	
22 ⁰² / ₀₅	18897-W	NOMEN & DS CAT No AMENDED	
02 ¹¹ / ₀₃	18819-W	HINDI NOMEN ADDED	
7-3-98		RETRACED WITHOUT CHANGE	
		PREV. D.C.NoS.15961-W & 16095-W / 23-12-83.	
DATE	AUTH.	ZONE	NATURE
			SIG. AHSP
			SIG. DO

CQA(W) JABALPUR	
DRN:-	CHD:-
TCD:- Sanjay	CHD:- 18/8/9
Daddi leaf	
C/D'MAN	DO
AHSP	
FOR CQA(W)	

AMENDMENTS
 DRG. SEALED :- D.C.No. 16095-W,
 DT/ 23-12-83, D.O. CQA(W)
 SCALE :- ESTD mass :- DATE:- 4-3-70
 MATL:- IS: 28-1985 GRADE 2, CONTINUOUS CAST
 ASSY DRG.
 1015-000566



DESIGN No.
D.6P-310602
 PART No.
IFL-7388

PACKING NUT पैकिंग नट
 D.S. CAT No. 4730-006960