

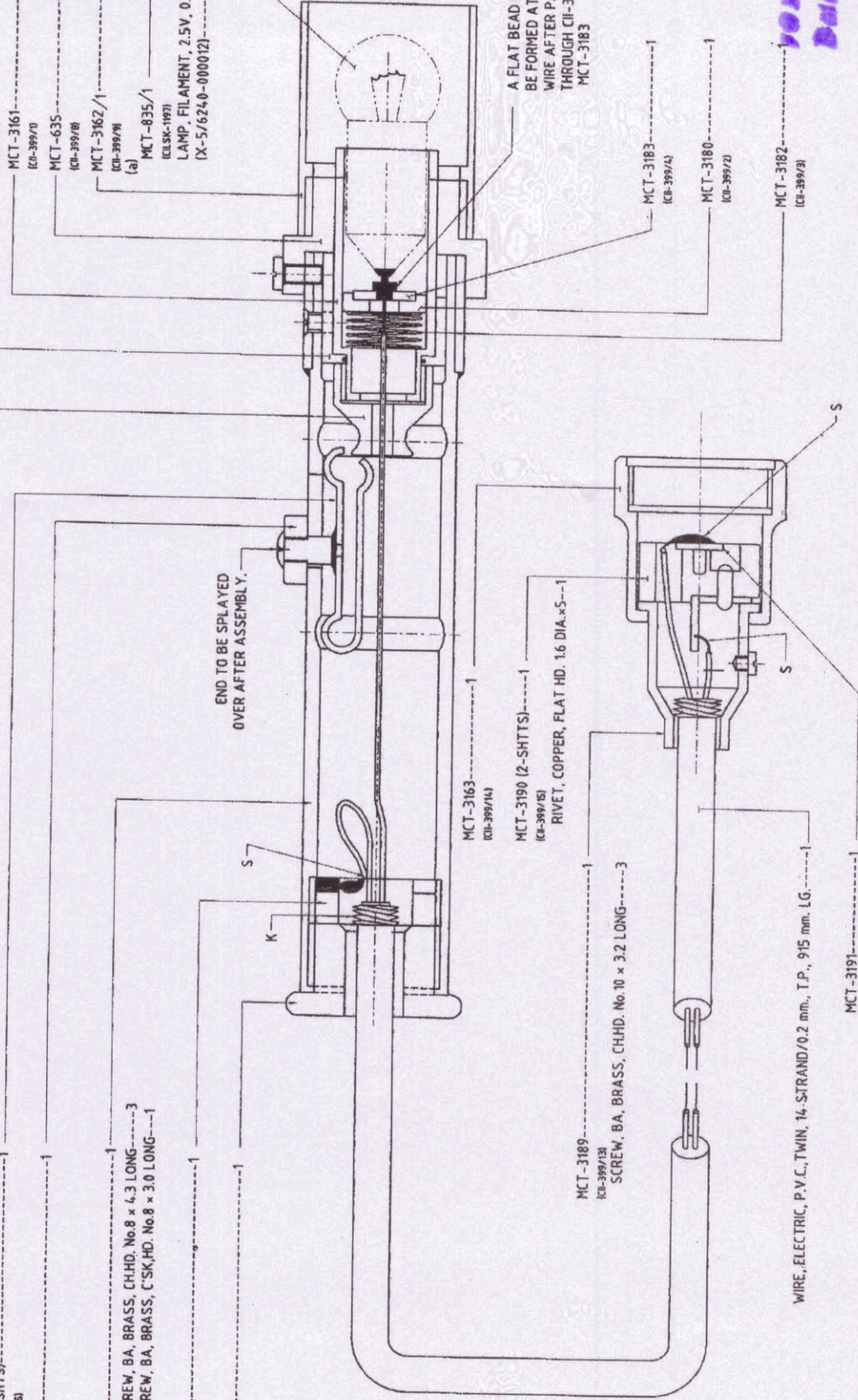
MCT-3212

K= WAXED COTTON THREAD KNOTS TO BE MADE AS TO PREVENT PULL ON SOLDERING.
S= ENDS OF THE WIRE TO BE SOLDERED AS SHOWN.

- MCT-3187 (3-SHTS) (CI-399/10, 3-SHTS)-----1
- MCT-3192 (CI-399/11)-----1
- MCT-3186 (CI-399/7) SCREW, BA, BRASS, CHHD, No.8 x 4.3 LONG-----3
- SCREW, BA, BRASS, C'SK, HD, No.8 x 3.0 LONG-----1
- MCT-3188 (CI-399/10)-----1
- MCT-636 (CI-399/12)-----1
- MCT-3189 (CI-399/13) SCREW, BA, BRASS, CHHD, No.10 x 3.2 LONG-----3
- MCT-3183 (CI-399/4)-----1
- MCT-3180 (CI-399/2)-----1
- MCT-3182 (CI-399/3)-----1
- MCT-3162 (CI-399/8)-----1
- MCT-835/1 (CI-399/17) LAMP FILAMENT, 2.5V, 0.7 WATT (X-5/6240-000012)-----1

END TO BE SPLAYED OVER AFTER ASSEMBLY.

A FLAT BEAD OF SOLDER TO BE FORMED AT THE END OF WIRE AFTER PASSING THROUGH CI-399/4 MCT-3183



WIRE, ELECTRIC, P.V.C. TWIN, 14-STRAND/0.2 mm, T.P., 915 mm. LG.-----1

MCT-3191 (CI-399/16)-----1

FINISH :- OUTER SURFACES PAINTED WITH LATEST APPROVED SERVICE COLOUR.

FOR TRADE COPY
Date of Issue 02/10/21
Rajni

ALL DIMENSIONS ARE IN MM.

**ORDNANCE FACTORY
DEHRADUN**

DR- R.K.SHARMA
TR-
CH- APPROVED.
JWM/DC. AWM/ASSY.

**CHEST, SPARE PARTS, TOOLS & ACCESSORIES, 101C
LAMP, GUN LAYING, 1A
LAMP, WANDERING, 1A**

DRG. No. :- CI-399/SA-1.

DT.- 08.10.2011

MATL. TREAT

SEE DETAILS. AS ABOVE

SHTS.- 1

SHT. NO.- 1

SCALE:- 2:1

**DRAWING NO.-
MCT-3212**

AMENDMENTS:
0FD/00/002.

90

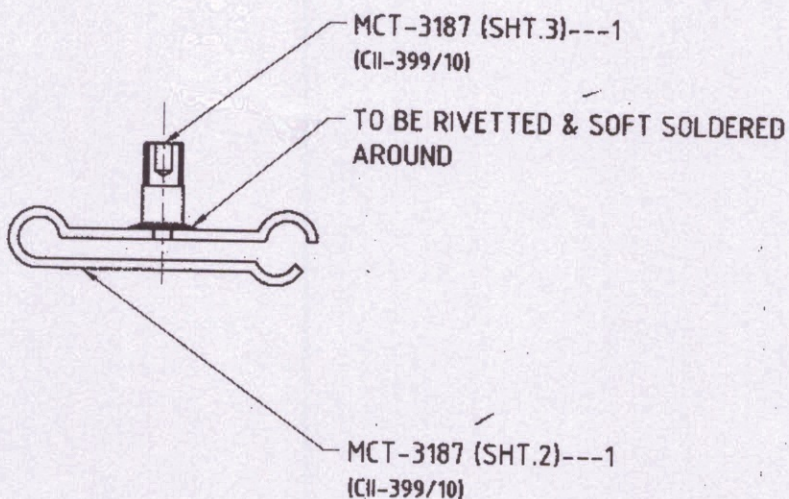
DEVICE F.C. ILLUMINATION, 4A SPRING C/W PIN

DRG. No. :- CH-399/10 (SHT.1 OF 3)

MCT-3187 -

(SHT.-1) -

ORDNANCE FACTORY, DEHRADUN.



FOR TRADE ONLY
Date of Issue 04/01/24
Raj

ALL DIMENSIONS ARE MM.
IMPORTANT DIMENSIONS MARKED THUS ●
INFORMATION MARKED THUS † TO BE MARKED ON.

		DT.-19.09.2011	SCALE- 2:1
	DR.- R.K.SHARMA	MATL	TREAT.
	TR.-	AS ON DRG.	AS ON DRG.
	CH.- <i>A</i>	SHTS.- 3	SHT. NO.- 1
	APPROVED.	DRAWING No. -	
AMENDMENTS.	<i>A</i>	MCT-3187-	
OFD/DO/002	JWM/DO. <i>A</i>	AWM/ASSY. <i>A</i>	

19

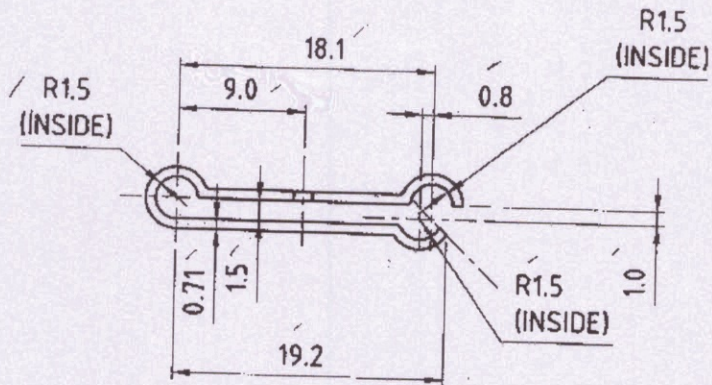
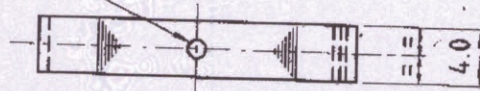
DEVICE F.C. ILLUMINATION, 4A SPRING C/W PIN

DRG. No. :- CII-399/10 (SHT.2 OF 3)

MCT-3187

(SHT.-2)

HOLE ϕ 1.3



ALL INSIDE BENT RADII TO BE 0.7 mm.

MATL. :- PHOSPHOR BRONZE Gde. -II HB, OF IS:7814-1985.
FINISH :- CLEANED.

FOR TRADE USE
Date of Issue: 04/01/21
Raj

ALL DIMENSIONS ARE MM.
IMPORTANT DIMENSIONS MARKED THUS ●
INFORMATION MARKED THUS † TO BE MARKED ON.

PIN

	DR.- R.K.SHARMA	DT.-19.09.2011	SCALE:- 2:1
	TR.-	MATL. AS ABOVE	TREAT. AS ABOVE
	CH.- ✓	SHTS.- 3	SHT. NO.- 2
AMENDMENTS.	APPROVED.	DRAWING No. - MCT-3187	
OFD/DO/002	JWM/DO. AWM/ASSY.		

ORDNANCE FACTORY, DEHRADUN.

18

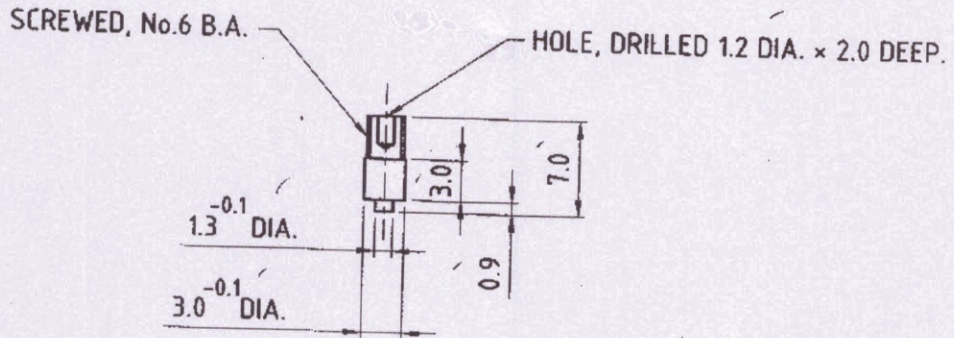
DEVICE F.C. ILLUMINATION, 4A SPRING C/W PIN

DRG. No. :- CII-399/10 (SHT.3 OF 3)

MCT-3187

(SHT.-3)

ORDNANCE FACTORY, DEHRADUN.



FOR TRADE USE
Date of Issue 04/01/21 Rg

MATL. :- BRASS, Gde-I HD OF IS:319-1989.
FINISH :- CLEANED.

ALL DIMENSIONS ARE MM.
IMPORTANT DIMENSIONS MARKED THUS ●
INFORMATION MARKED THUS † TO BE MARKED ON.

PIN

	DR.- R.K.SHARMA	DT.-19.09.2011	SCALE- 2:1
	TR.-	MATL. AS ABOVE	TREAT. AS ABOVE
	CH.- <i>sh</i>	SHTS.- 3	SHT. NO.- 3
	APPROVED.	DRAWING No. - MCT-3187	
AMENDMENTS.	<i>sh</i>		
OFD/DD/002	JWM/DO. AWM/ASSY.		

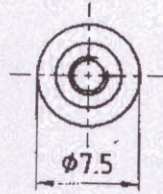
17

CHEST, SPARE PARTS, TOOLS & ACCESSORIES, 101C

NUT

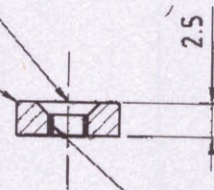
DRG. No. :- CII-399/17

MCT-3192



C'SK AT 90° x 1.0 DEEP.

SLIGHTLY ROUNDED



TAPPED, No.6 B.A.

MATL. :- BRASS, Gde.-I HB OF IS:319-1989.
FINISH :- DULL BRONZE BLACK TO IS:1378-1979.

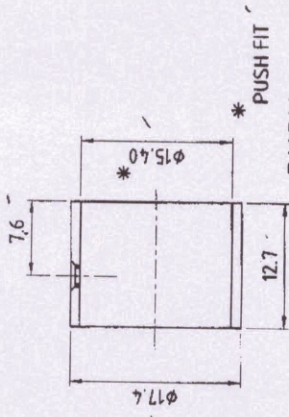
FOR TRADE ODM
 Date of issue 04/10/17

ALL DIMENSIONS ARE MM.
 IMPORTANT DIMENSIONS MARKED THUS ●
 INFORMATION MARKED THUS † TO BE MARKED ON.

		DT.-21.09.2011	SCALE- 2:1
		<u>MATL.</u> AS ABOVE	<u>TREAT.</u> AS ABOVE
		DR.- R.K.SHARMA	
		TR.-	
		CH.- <i>A</i>	SHTS.- 1
			SHT. NO.- 1
		APPROVED.	
AMENDMENTS.		<i>A</i>	DRAWING No. - MCT-3192 -
OFD/DO/002		JWM/DO. AWM/ASSY.	

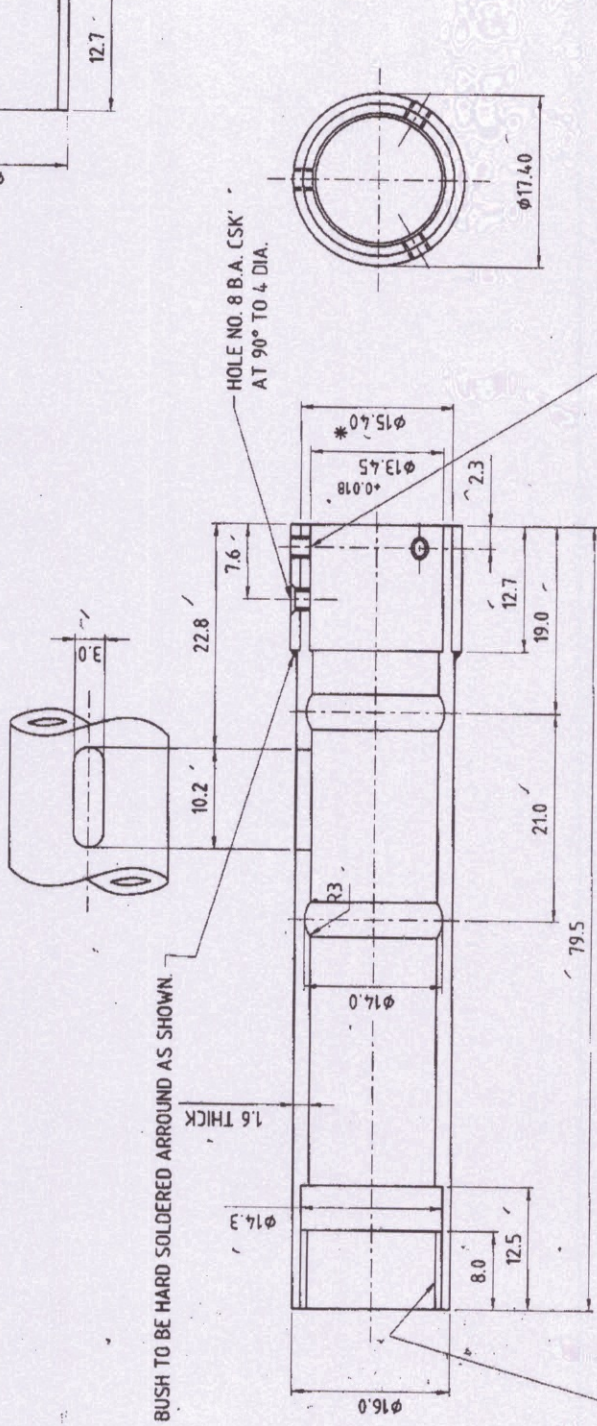
ORDNANCE FACTORY, DEHRADUN.

MCT-3186



BUSH

SCALE :- 2:1



BUSH TO BE HARD SOLDERED AROUND AS SHOWN.

1.6 THICK

HOLE NO. 8 B.A. CSK' AT 90° TO 4 DIA.

3-HOLES No. 8 B.A. EQUI-SPACED AROUND CIRCUMFERENCE AFTER SOLDERING

* PUSH FIT

26 T.P.I. WHIT
MAJOR DIA. 14.275 (DESIGN. SIZE)
MINOR DIA. 13.025 (MEDIUM FIT)

FOR TRADE ONLY
Date of issue: 04/01/29
Raj

MATL. :- BRASS TUBE Gde.,
CuZn30 AS, TA TO
IS:407-1981.

ALL DIMENSIONS ARE mm.

ORDNANCE FACTORY DEHRADUN	DR:- R.K.SHARMA	DATE:-19.09.2011	SCALE- 2:1
	TR:-	MATL. AS ABOVE	TREAT AS ABOVE
CH:-	APPROVED.	SHTS:- 1	SHT. No:- 1
JWM/DD.	ANM/ASSY.	DRAWING No.:- MCT-3186	
	DRG. No.:- CII-399/7	AMENDMENTS. OFD/DD/002	

CHEST, SPARE PARTS, TOOLS & ACCESSORIES, 101C
PIPING

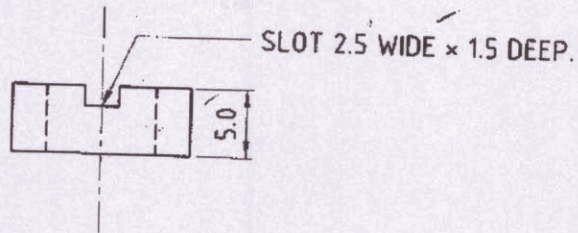
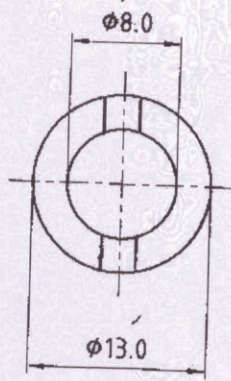
16

15

CHEST, SPARE PARTS, TOOLS & ACCESSORIES, 101C RING, TERMINAL

DRG. No. :- CII-399/11

MCT-3188 ✓

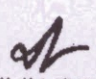


ORDNANCE FACTORY, DEHRADUN.

MATL. :- BRASS, Gde HT-2 OF IS:320-1980.
FINISH :- DULL BLACK BRONZE TO IS:1378-1979.

FOR TRADE USE
 Date of Issue 04/01/11 Rgi

ALL DIMENSIONS ARE MM.
 IMPORTANT DIMENSIONS MARKED THUS ●
 INFORMATION MARKED THUS † TO BE MARKED ON.

	DR.- R.K.SHARMA	DT.-20.09.2011	SCALE- 2:1
	TR.-	MATL. AS ABOVE	TREAT.
	CH. ✓	SHTS.- 1	SHT NO- 1
AMENDMENTS.	APPROVED.	DRAWING No. :- MCT-3188	
OFD/DO/002	JWM/DO.  AWM/ASSY. 