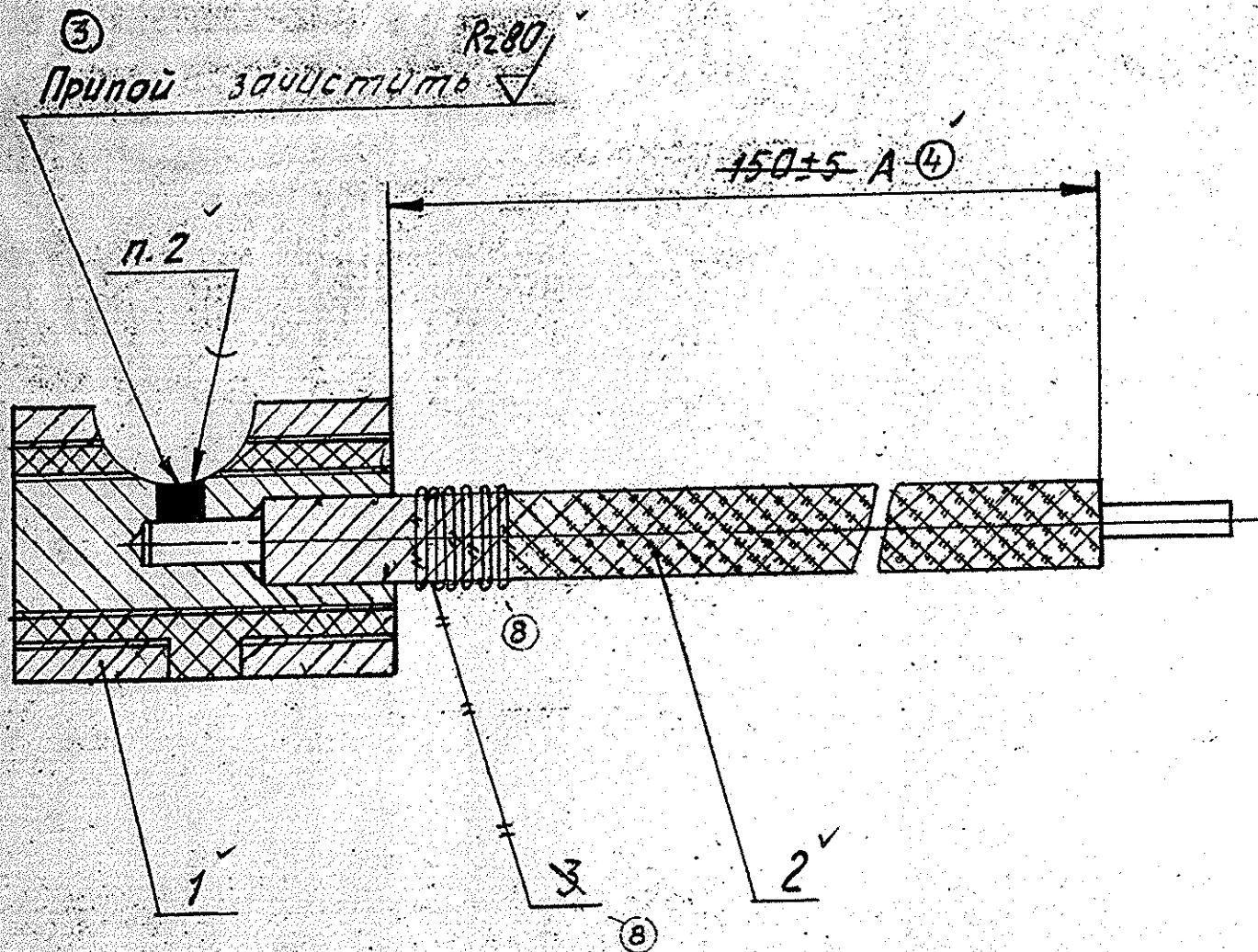


2A42.06.030CB



CONTACT

Assembly Drawing

Scale 1:1. Mass: 0.01

- (1) 2. Solder with solder ПОС-61, ГОСТ 21931-76, with flux ЛТИ-120, ТУ-84-406-73
3. Check for electric strength by a voltage of 500 V 50 Hz AC for 1 min
4. Insulation resistance should be 20 megohms, min., under normal climatic conditions. Measure resistance by megohmmeter with a voltage of 500 V
5. Stamp K on the lot tag
1. Refer to ГОСТ 23587-79 for technical requirements to construction of wire soldering and attachment of their conductors. Solder the wire according to variant 1.1, ГОСТ 23587-79

	Size A, mm
For upper feeding	110 ± 10
For lower feeding	60 ± 10

(3) Dress the solder

	Размер А, мм
Для верхней подачи	110 ± 10
Для нижней подачи	60 ± 10

FINAL DRG. FOR MFR. AT OFT

DATE 15/2/93

UP-DATED *А. Шама*

CHECKED *В. Шама*

YFM-PROJ. *М. Шама*

SCT. Копия Верна *11.02.93*

DGM/PROJ. *Генер* 15.02.93

2A42

2A42.06.030CB

CONTACT
КОНТАКТ
ASSEMBLY DRAWING
СБОРОЧНЫЙ ЧЕРТЕЖ

Лист	Масса	Масштаб
0	0,01	1:1
Лист	Листов	