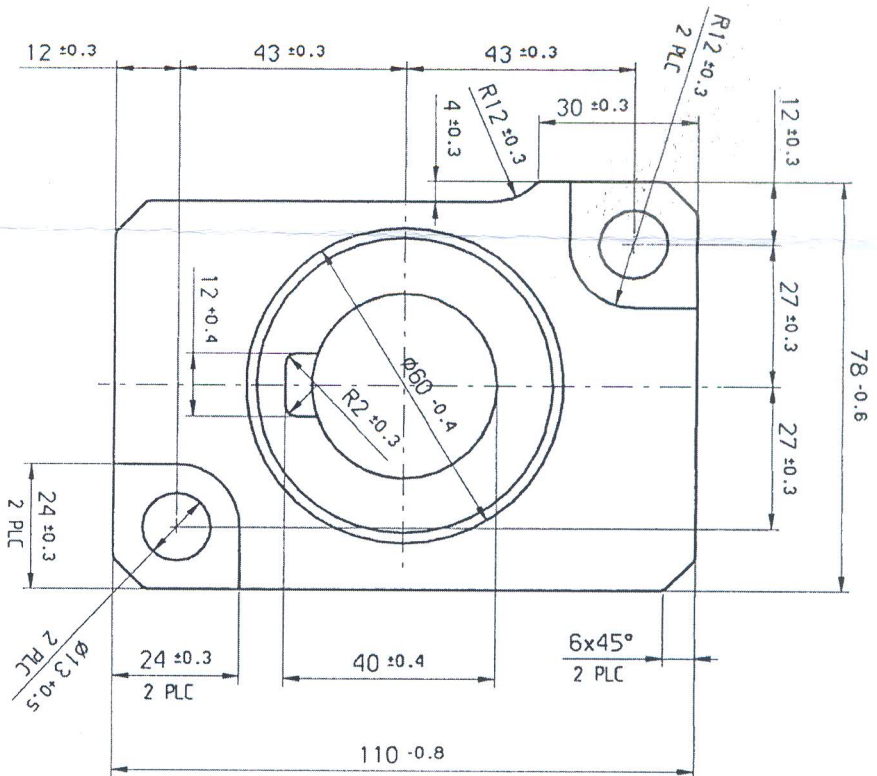
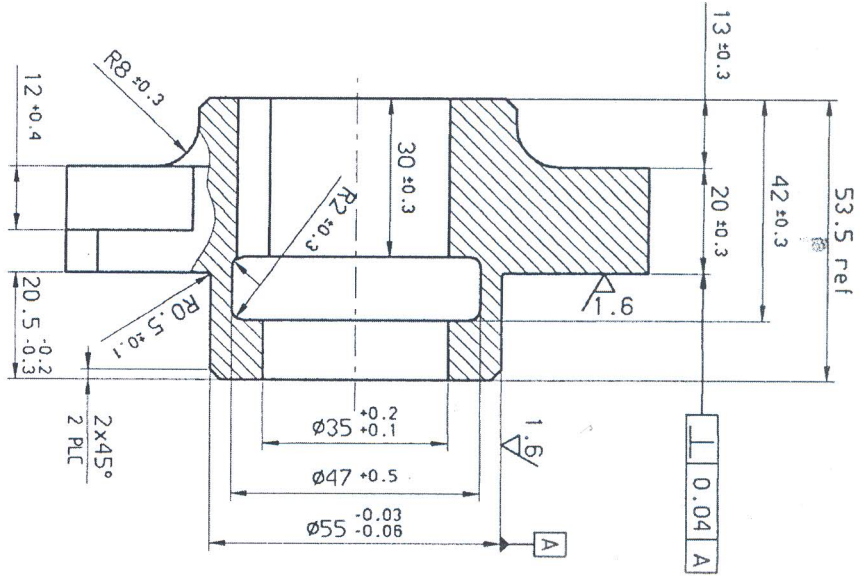


THIS DRAWING/DOCUMENT CONTAINS  
 COMPANY PROPRIETARY INFORMATION  
 USE OR DISCLOSURE IN WHOLE OR  
 IN PART SHALL NOT BE MADE  
 WITHOUT THE WRITTEN PERMISSION  
 OF OFB

NOTES:  
 1. CHAMFERED 0.2x45°

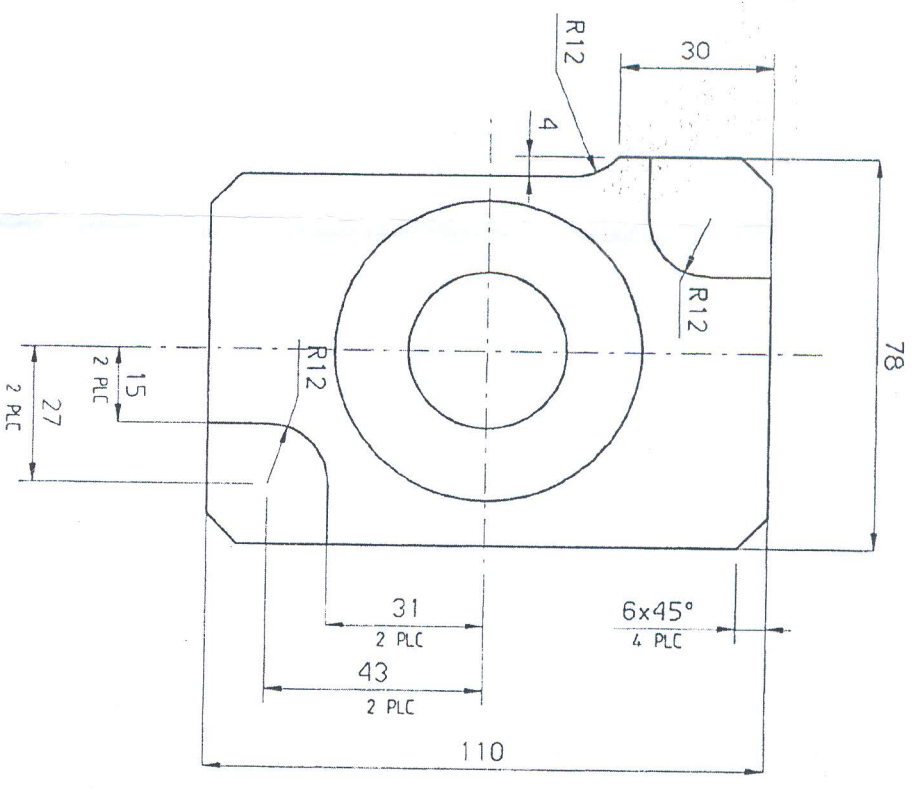
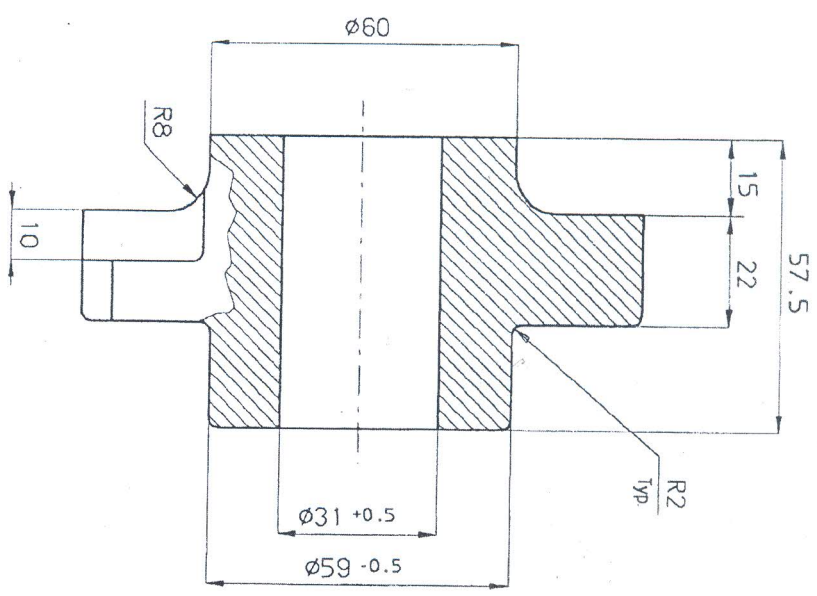


केवल निविदा हेतु  
 सन्तर्भ मीमा पत्रा मी 380149  
 दिनांक 23-04-2018

6.3 (1.6)		DATE: 01.01.2007		ALTERNATE/INDIGENOUS MATERIAL SPECN:		162	
MACHINING INSTRUCTIONS		INSPECTED TO BRACES FOR DIMENSIONS AND ANGLES		IS-10943, 1989, 16d with chem. Comp. Ck= 0.22±0.29, SiK=0.40(max), Mn=0.00±0.30, S%≤0.035(max), P%≤0.035(max), Mo%≤0.15, 0.30.		(REF: COAW/JABALPUR-1, No. 3B3402/COAW/011 DTL 12 JULY 2005)	
HEAT TREATMENT		PART NO. SHARANG 130/155MM_UG_OFB_SIB		1/8912-W		DRAWING SEALED	
FINISH PHOSPHATE COATING ACC TO DDD-P-16232 TYPE M CL.2		ASSEMBLY 176-1002		Dt: 27-5-2005		COA (W), JABALPUR	
MATERIAL 176-1160-C		NAME PIN HOUSING		SCALE 1:1		APPROVED	
300-340 HB		176-1002		A3		CHG. JMW/DO	
176-1160-C		PIN HOUSING		176-1160		DODDO DIR/DOG	
						ORONMAGE DEVELOPMENT CENTRE, OFC KANPUR	

- NOTES:**
1. Casting in accordance with spec. No342 c.l.c.
  2. Round edges R0.3 to R0.5

Dimensions without tolerances		toler
from	to	
	4	± 0.10
6	10	± 0.12
10	14	± 0.15
14	18	± 0.20
18	24	± 0.25
24	30	± 0.30
30	40	± 0.37
40	50	± 0.44
50	65	± 0.52
65	80	± 0.60
80	100	± 0.68
100	120	± 0.76
120	14.0	± 0.84



**केवल निविदा हेतु**  
 प्रमाण संख्या नं० 380149  
 दिनांक 23-04-2018

*for trade only*

MACHINING INSTRUCTIONS		INSPECTED DIMENSIONS FOR DIMENSIONS AND ANGLES	
ANGLES ±30		HEAT TREATMENT	
NORMALIZING		FINISH	
MATERIAL		25CrMo4	
ITEM	DESCRIPTION	QUANTITY	UNIT
SCALE	NTS		
APPROVED	DATE	176-1160-C	
DRW	DATE		
CHKD			
TECH			
CDR			
APPROVED			
MATERIAL		FIELD USE FACTORY	
25CrMo4		KAMNUR	
PIN HOUSING		CASTING	
176-1160-C		176-1160-C	
SHT. NO. 1		SHT. NO. 1	