

4

3

2



1

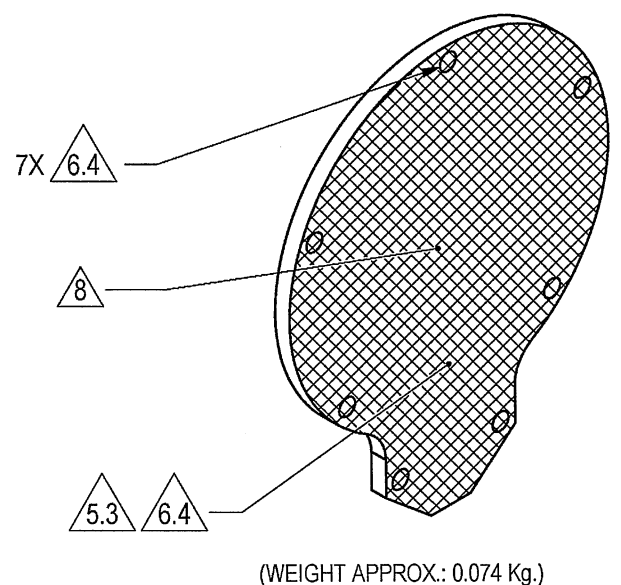
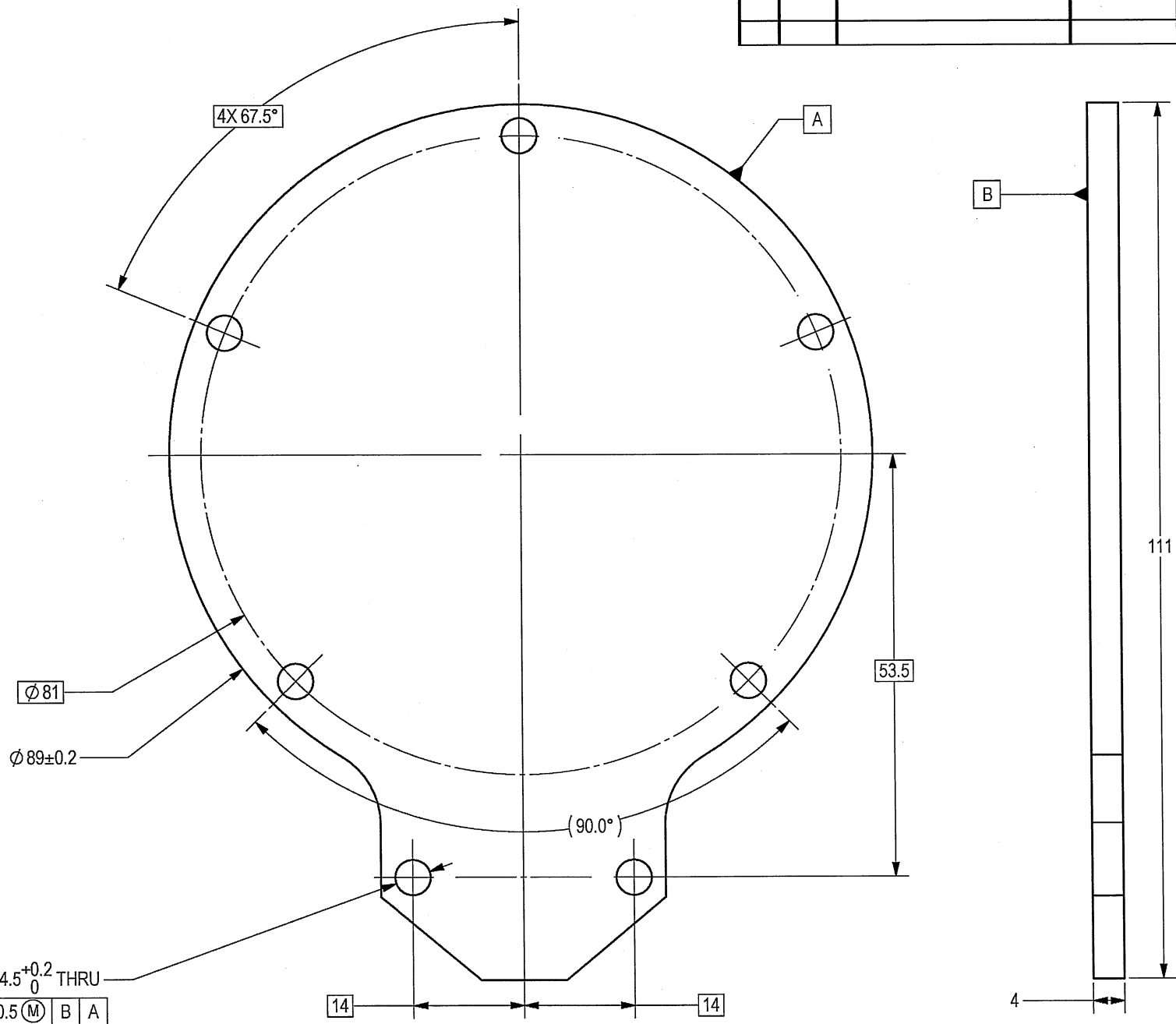
THIS DOCUMENT AND THE INFORMATION CONTAINED IN IT ARE PROPRIETARY AND CONFIDENTIAL TO OFT. NO PERSON OR ENTITY IS ALLOWED TO COPY, REPRINT, REPRODUCE OR PUBLISH ANY PART OF THIS DOCUMENT, NOR DISCLOSE ITS CONTENTS TO OTHERS, NOR MAKE ANY USE OF IT, NOR ALLOW OR ASSIST OTHERS TO MAKE ANY USE OF IT UNLESS BY THE PRIOR WRITTEN EXPRESS AUTHORIZATION OF OFT AND THEN ONLY TO THE EXTENT AUTHORIZED.  
COPYRIGHT-OFT.

SHEET REV STATUS  
ALL SHEETS ARE THE SAME REVISION

REVISION RECORD				
REV	ECO	DESCRIPTION	DATE	APVD
--		Released	10-Oct-18	L. Goldshtein

NOTES :

- INTERPRET THIS DRAWING IAW ASME Y14.100M.
- MATERIAL: ALUMINUM ALLOY PLATE 6061-T6 PER QQ-A-250/11. (EQUIVALENT ALUMINUM IS PERMITTED AFTER ELBIT APPROVAL).
- GENERAL TOLERANCES ACCORDING TO ISO 2768-m.
- DEBURR AND REMOVE SHARP EDGES APPROX. 0.3X45°.
- FINISH:
  - CHROMATIC CONVERSION COATING PER MIL-DTL-5541F, TYPE I, CLASS 3.
  - ANODIC COATING PER MIL-A-8625 TYPE II 15 TO 25 MICRON THICK CLASS 1.
- THE MARKED AREA , AND SPECIFIED THREADS AND HOLES SHALL BE PROTECTED AGAINST ANODIC COATING.
- PAINT:
  - PRIMER: LEAD AND CHROMATE FREE EPOXY PRIMER PER MIL-DTL-53022 THICKNESS: 25-40 MICRONS. OR EQUIVALENT APPROVED BY ELBIT.
  - INTERMEDIATE: APPLY TWO LAYERS OF HIGH SOLID EPOXY POLYAMIDE PER MIL-PRF-22750 TYPE II CLASS H. EACH LAYER 30-50 MICRONS.
  - TOP COAT: APPLY TWO LAYERS OF ALIPHATIC POLYURETHANE PER MIL-PRF-85285 OR MIL-C-83286 RAL 9016 MATT. EACH LAYER 30-50 MICRONS.
- AREAS MARKED BY , AND SPECIFIED THREADS AND HOLES MUST BE PROTECTED FROM PAINT.
- QUALITY ASSURANCE PROVISIONS:
  - QUALITY ASSURANCE PROVISIONS FOR THIS ITEM PER RDMQD00012P.
- IDENTIFY PER MIL-STD-130 BY STAMPING OR BY LABELLING. CHARACTERS 1.25 MM HIGH MEETING REQUIREMENTS OF MIL-STD-202F METHOD 215J. LOCATION APPROX. AS SHOWN.
- PACKAGING AND PACKING: THE FINISHED PART SHALL BE PRESERVED AND PACKAGED IN ACCORDANCE WITH COMMERCIAL PRACTICE.



7X  $\phi 4.5^{+0.2}_0$  THRU  
 $\phi 0.5$  (M) B A

SEE ATTACHED MEDIA

UNLESS OTHERWISE SPECIFIED		SIGNATURE	DATE	ORDNANCE FACTORY TIRUCHIRAPPALLI	
DIMENSIONS ARE IN MM PER ASME Y14.5 - 2009		DRAWN	10/12/18	FOR: ELEVATION ASSY	
TOLERANCES		CHECKED		TITLE	
LINEAR	ANGULAR	HOS/DDO	R. Feb 30/20	COVER SHAFT ENCODER	
SEE NOTE 3.	SEE NOTE 3.	OFFICER/PRODN		SIZE	CAGE CODE
1st ANGLE PROJECTION		OFFICER/QC		C	2291A
SURFACE TEXTURE IN MicroMeter		OFFICER/DDO		DWG NO	Y25635A-00
				SCALE	1:1
				AUTOMATED DRAWING (SW)	
				SHEET 1 OF 1	
				PLM Control	

DWG NO  
Y25635A-00

SH  
1

A

4

3

2

1