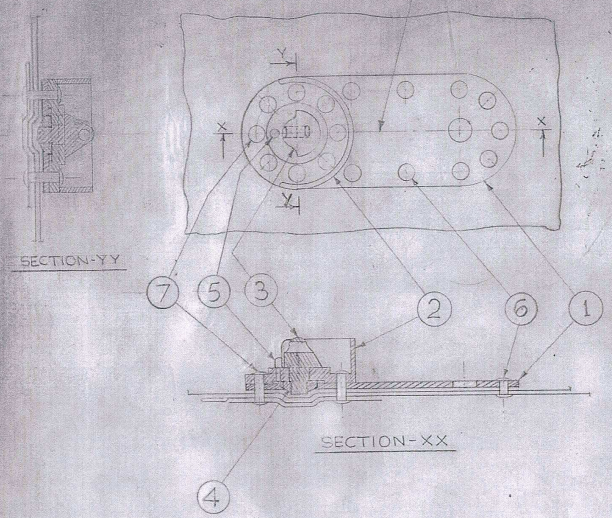


PLACE FOR INSPECTION MARKING



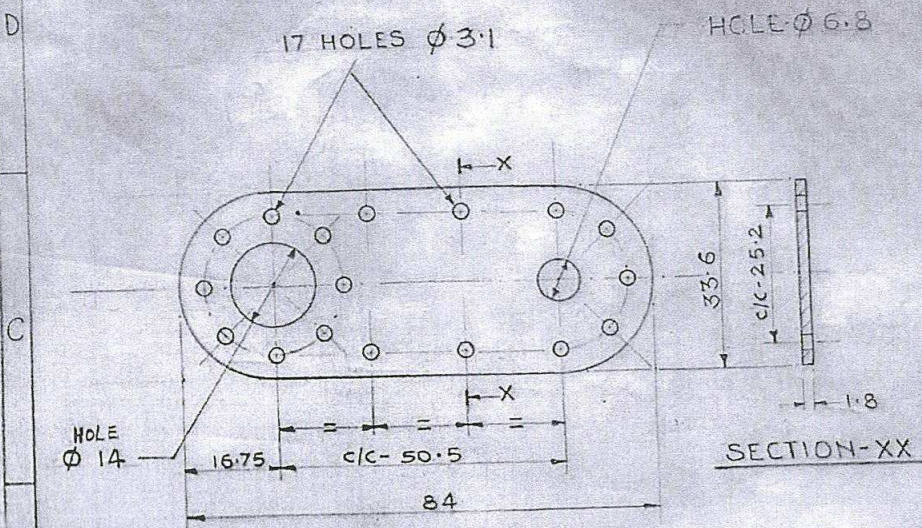
7	-	RIVET LARGE SWAP HEAD MILD STEEL Ø8x12	8	IS.740-1977
6	-	RIVET SMALL SWAP HEAD MILD STEEL Ø3x7	9	IS.740-1977
5	6	PIN	1	-
4	5	NUT	1	-
3	4	CONE	1	-
2	3	BODY	1	-
1	2	BASE PLATE	1	-
-	1	ASSEMBLY	-	-
DETAIL NO	SHEET NO.	NOMENCLATURE	NO. OF P.	SPECN/DWG. NO.

NOTE:- RIVETS (DETAIL No.6 & 7) TO BE FITTED DURING FITMENT OF THE COMPONENT WITH PACK COVER OF PILOT PARACHUTE BMK-41 (DRG. No. 1164-A-3 119&43 SHEET)

DRN	S.K. SHARMA	DRP	MATERIAL:-	AD RDE AGRA
CHKD	S.K. SHARMA	DRP	FINISH:-	
YRP		O/C	FGO	APPROVED
COMP				
SCALE:-	1:1	PROJ OFFR	HEAT TREATMENT:-	PROJ. DIRECTOR (S&M)
DIMENSIONS	IN mm	D.V. HEND		
TOLERANCE:	± 0.05 (PL)	ASSEMBLY		DRG. NO.
	± 0.10 (SM)	SWIVEL CONE WITH PLATE		

DESIGNER	S.K. SHARMA	DATE	11/11/77
CHKD	S.K. SHARMA	DATE	11/11/77
YRP		DATE	
COMP		DATE	
SCALE	1:1	DATE	
DIMENSIONS	IN mm	DATE	
TOLERANCE	± 0.05 (PL)	DATE	
	± 0.10 (SM)	DATE	

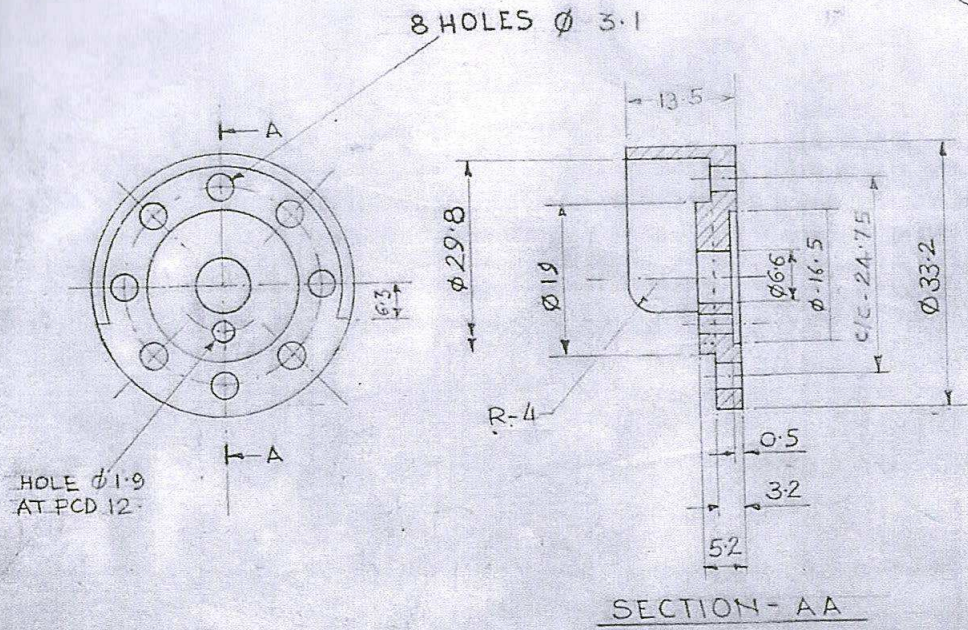
1



MATERIAL :- STAINLESS STEEL STRIP
 TO GRADE 15 Cr 16 Ni 2
 AS PER IS: 6603 - 1972 IN
 HARDENED & TEMPERED CONDITION
FINISH :- TO BE SMOOTHLY FINISHED
 AND POLISHED BRIGHT

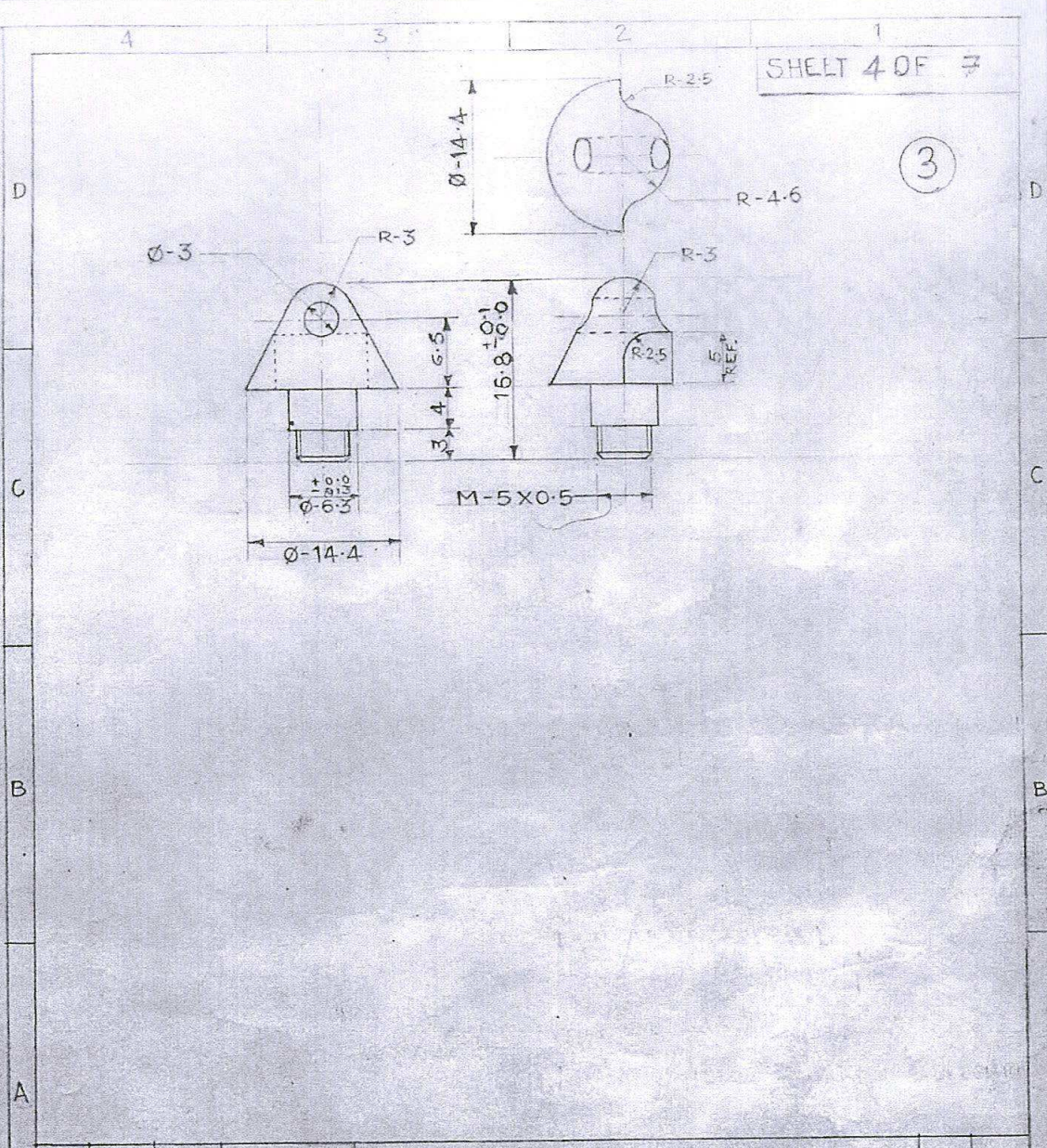
R.N. DATE ZONE AUTHORITY				BRIEF RECORD		OL HEAD
						DES SA
DRN	<i>Mali</i>	DRD		MATERIAL - AS ABOVE	AD. R. D. E., AGRA	
CHD	<i>Mali</i>	<i>Jaha</i>	<i>+</i>	FINISH - AS ABOVE		
TRD		<i>0 1/2</i>	<i>PGD</i>	HEAT TREATMENT		
COMH		PROJ. OFFR	<i>+</i>		APPROVED	
SCALE -	1:1	DIV. HEAD	<i>+</i>			
DIMENSIONS ARE IN MM				<p align="center">BASE PLATE (SWIVEL CONE WITH PLATE)</p>		
TOLERANCE IS: 2102 (P.T.) MEDIUM						
				DRG No. <i>(CA)</i> ADRDE/1321-01 (b) DRD/60/96		

(2)



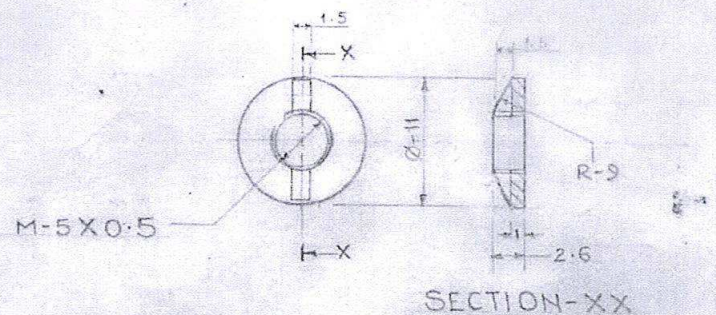
MATERIAL: - STAINLESS STEEL TO GRADE 15 CY 16 NI 2
AS PER IS: 6603-1972 IN HARDENED
& TEMPERED CONDITION

DRN	DATE	ZONE	AUTHORITY	BRIEF RECORD		O/C	PGD			
DRN: <i>AP-107</i>			DRD	MATERIAL: - AS ABOVE		ADRDE, AGRA				
CHD: <i>3.7.21</i>			<i>Taha</i>	<i>AP</i>	FINISH: SMOOTHLY FINISHED AND POLISHED BRIGHT.					
TRD			O/C	PGD	HEAT TREATMENT: -					
COMP			PROJ. OFFR. <i>JB</i>	DIV. HEAD. <i>JB</i>	APPROVED.					
SCALE: - NTS	<p>BODY</p> <p>(SWIVEL CONE WITH PLATE)</p>									
DIMENSIONS ARE IN MM									PROG DIRECTOR (QA)	
TOLERANCES IS: 2102 (P-1) MEDIUM									DRG. No. <i>(a)</i> ADRDE/1321-02 <i>(b)</i>	
DRD/60/98										



R No.	DATE	ZONE	AUTHORITY	BRIEF RECORD	o/c	PGD
DRN. <i>DRD</i>			DRD	MATERIAL:- STAINLESS STEEL AS PER ASTM 321 GRADE OF B	A.D.R.D.E, AGRA	
CHD. <i>DRD</i>			<i>DRD</i>	FINISH:- TO BE FINISHED SMOOTH AND ELECTROPOLISHED		
TRD.			o/c	HEAT TREATMENT:-		
COMP.			PGD		APPROVED.	
SCALE:- 2:1			PROJ. OFFR. <i>DRD</i>			
			DIV. HEAD. <i>DRD</i>			
DIMENSIONS ARE IN mm.				<p style="text-align: center;">CONE (SWIVEL CONE WITH PLATE)</p>		
TOLERANCE IS: 2102 (PL-3) MEDIUM						
				DRG No. <i>(a)</i> ADRDE/1321-03 <i>(b)</i> DRD/60/98		

4

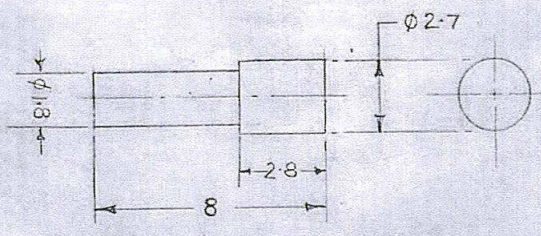




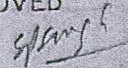
--	--	--	--	--	--	--	--

R.No. DATE ZONE AUTHORITY BRIEF RECORD 0 1/2 PGD

DRN	DRD	MATERIAL: STAINLESS STEEL AS PER AISI: 304	A.DRDE, AGRA
CHD	0 1/2 PGD	FINISH: TO BE FINISHED SMOOTH AND ELECTROPOLISHED	
TRD	PROJ. OFFR	HEAT TREATMENT: -	APPROVED. <i>[Signature]</i> PROG. DIRECTOR (QA)
COMP	DIV. HEAD		
SCALE: 2:1	NUT (SWIVEL CONE WITH PLATE)		DRG No. - (a)
DIMENSIONS ARE IN MM			ADRDE/1321-04 (b)
TOLERANCE IS: 2102 (P1) MEDIUM			DRD/GO/92

5



R NO		DATE	ZONE	AUTHORITY	BRIEF RECORD		o/c	PGD
DRN	DALIP	DRD		MATERIAL :- STAINLESS STEEL TO SPECN BS:155-194-9		ADRDE, AGRA		
CHD	Sita Ram	J. Jais		FINISH :- SMOOTHLY FINISHED & BRIGHT		 		
TRD		o/c		HEAT TREATMENT :-		APPROVED		
COMP		PGD						
SCALE :- 5:1		PROJ. OFFR				PROG. DIRECTOR (QA)		
DIMENSIONS IN mm		DIV HEAD				DRG. No.		
TOLERANCE IS: 2102 (PT. 1) MEDIUM				PIN		ADRDE/1321-05 (20)		
				SWIVEL CONE WITH PLATE		DRD/60/98		

F PACKING CLAUSE:-

EACH SWIVEL CONE WITH PLATE SHALL BE PACKED IN A POLYETHYLENE BAG OF SUITABLE SIZE AND TIED. THE MOUTH OF THE BAG TO BE HEAT - SEALED 20 NOS. THIS SEALED BAG SHALL BE PACKED IN A SUITABLE SIZE OF CARTON 10 NOS. OF SUCH CARTONS SHALL BE PACKED IN A C.W.P (DULY LINED WITH PAPER PACKING WATER PROOF) ONE SWIVEL CONE WITH PLATE IN EACH CARTON SHALL BE IDENTIFIED BY A LABEL SHOWING CAT. NO, DESIGNATION OF THE STORE AND ALSO THE RECOGNISED INITIALS OF THE MANUFACTURER. THE PACKING CASE SHALL BE LEGIBLY AND INDELIBLY MARKED WITH THE ADDRESS OF THE CONSIGNEE, CONSIGNOR, CAT. NO., NOMENCLATURE OF THE STORE, THE YEAR OF MANUFACTURE, TOTAL NO OF PACKING CASES AND THE NO. OF INDIVIDUAL PACKING CASE IN A CONSIGNMENT

E
D
C
B

15/12/99

B	15/12/99	F-4	ADRDE/PAS/AEP/ 57/DT. 13-12-99	PACKING CLAUSE INCLUDED AS SHEET No.7			
RTN	DATE	ZONE	AUTHORITY	BRIEF RECORD		OVC DFS	
SCALE:-			ADRDE, AGRA	DRN	for	PROJ. OFFR	
DIMENSION IN mm.			GROUP:	CHD	Sita Kumari	GROUP DIR	
MATERIAL PROCESS:-			SWIVEL CONE WITH PLATE		APPROVED		
FINISH:-					Tehmi OVC D&S		HEAD (Q.A)
HEAT TREATMENT:-					DRG. No.		(b)
					ADRDE/1321-06		
			PROY No				
			DRD/60/98				