

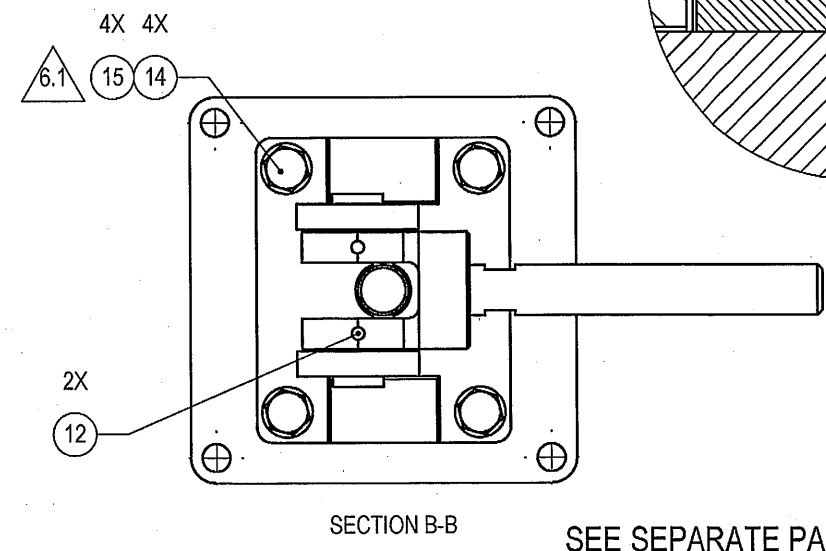
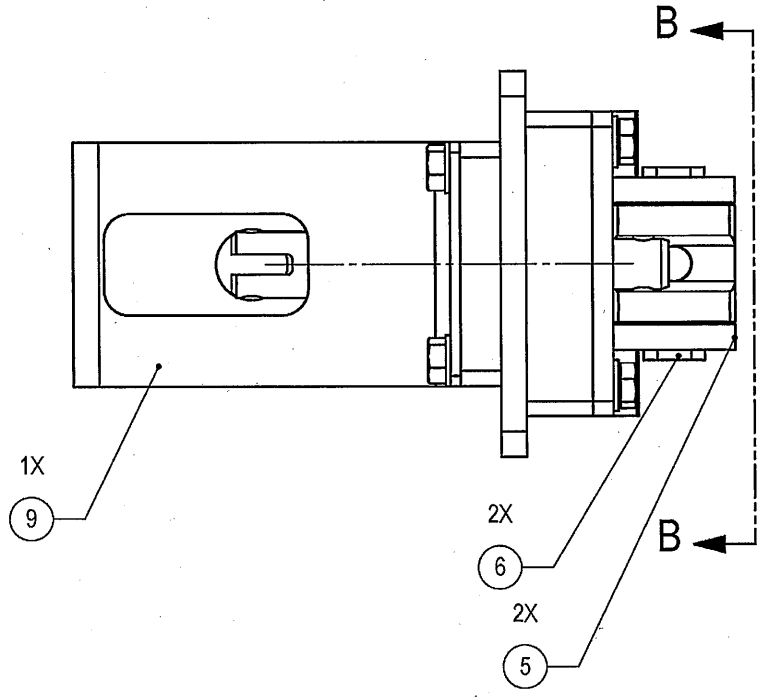
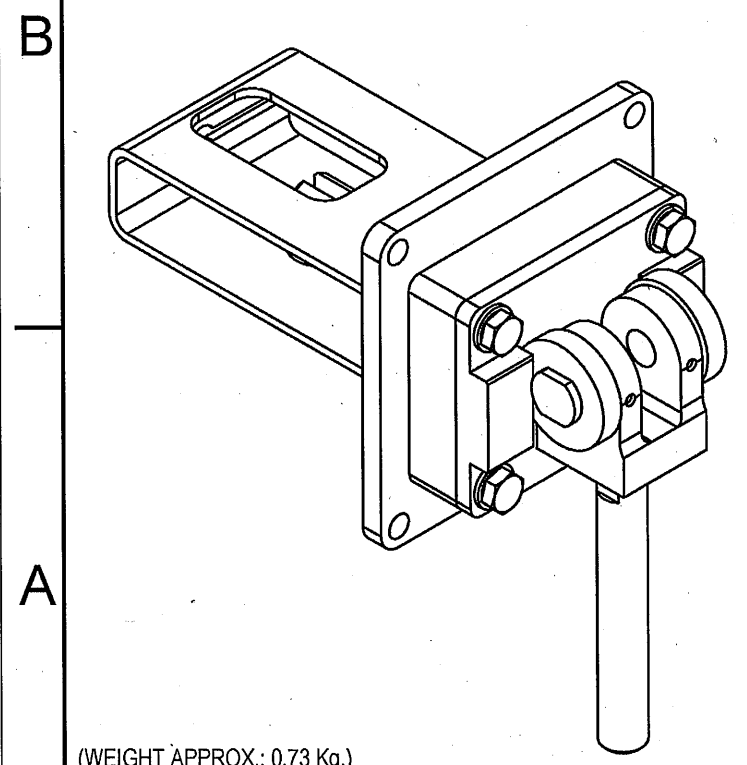
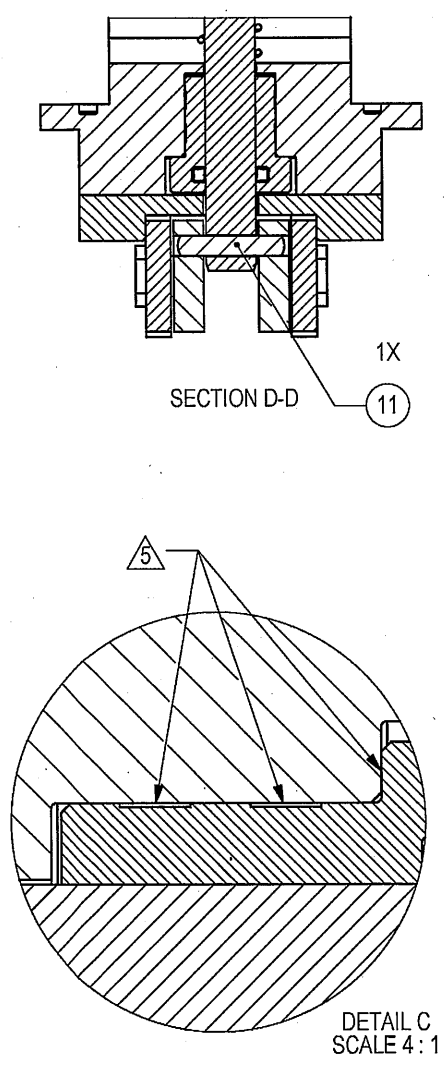
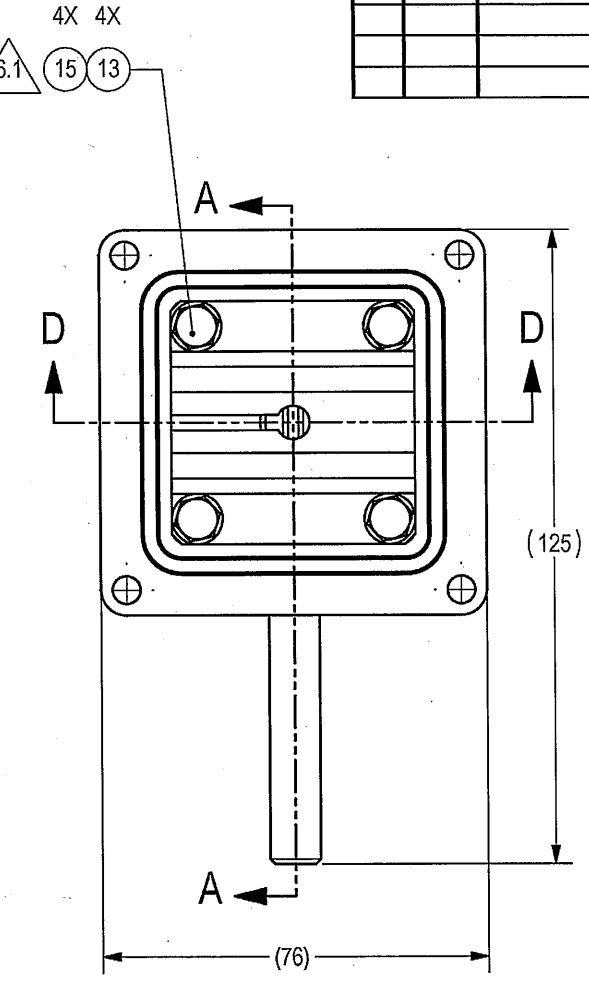
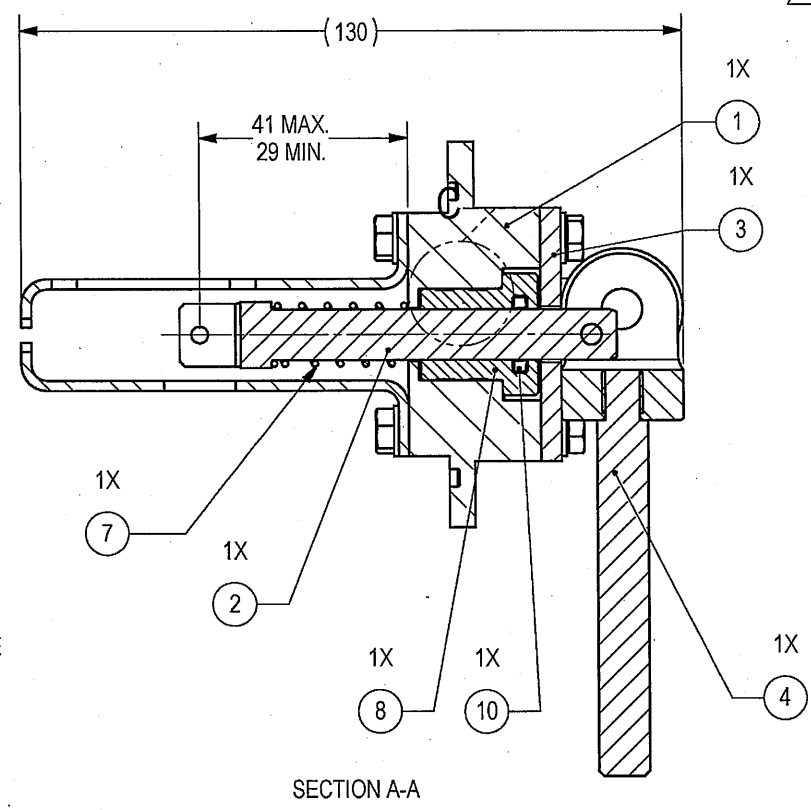
THIS DOCUMENT AND THE INFORMATION CONTAINED IN IT ARE PROPRIETARY AND CONFIDENTIAL TO OFT. NO PERSON OR ENTITY IS ALLOWED TO COPY, REPRINT, REPRODUCE OR PUBLISH ANY PART OF THIS DOCUMENT, NOR DISCLOSE ITS CONTENTS TO OTHERS, NOR MAKE ANY USE OF IT, NOR ALLOW OR ASSIST OTHERS TO MAKE ANY USE OF IT UNLESS BY THE PRIOR WRITTEN EXPRESS AUTHORIZATION OF OFT AND THEN ONLY TO THE EXTENT AUTHORIZED. COPYRIGHT-OFT.

SHEET REV STATUS	
ALL SHEETS ARE THE SAME REVISION	

REVISION RECORD				
REV	ECO	DESCRIPTION	DATE	APVD
-		Released	10-Oct-18	E. Itzcovich

NOTES:

- INTERPRET THIS DRAWING IAW ASME Y14.100M.
- UNLESS OTHERWISE SPECIFIED THE REQUIREMENTS OF MIL-STD-454 APPLY.
- APPLY F/N 17 ON SEALS.
- USE F/N 16 FOR ALL SCREWS TIGHTENING.
- GLUE ALL AROUND F/N 8 WITH F/N 18, 19 (REFER TO DEFINED PLACES).
- TIGHTENING TORQUE OF SCREWS:
  - 6.1 M5 - 6 NM ±5%.
- QUALITY ASSURANCE PROVISIONS:
  - 7.1 QUALITY ASSURANCE PROVISIONS FOR THIS ITEM PER RDMQD00012P.
- PARENTHEICAL FIGURES ARE FOR REFERENCE ONLY.
- PACKAGING AND PACKING:
  - THE FINISHED PART SHALL BE PRESERVED AND PACKAGED IN ACCORDANCE WITH MANUFACTURER'S BEST COMMERCIAL PRACTICE.
- IDENTIFY PER MIL-STD-130 PARA 4.1.B, BY LABELING ITS CONTAINER WITH THE PART NUMBER. CHARACTERS 1.25 MM HIGH.



SEE SEPARATE PARTS LIST

UNLESS OTHERWISE SPECIFIED		SIGNATURE	DATE	ORDNANCE FACTORY TIRUCHIRAPPALLI	
DIMENSIONS ARE IN MM PER ASME Y14.5-2009		DRAWN	21/12/20	FOR: PEDESTAL ASSY	
TOLERANCES		CHECKED		OF: 12.7MM SRCG	
LINEAR	ANGULAR	HOS/DDO	21/12	TITLE RELEASE CAM ASSY	
1st ANGLE PROJECTION		OFFICER/PRODN		SIZE	CAGE CODE
SURFACE TEXTURE IN MicroMeter		OFFICER/OC		C	2291A
		OFFICER/DDO		DWG NO	Y25647A-00
				SCALE	1:1
				AUTOMATED DRAWING (SW)	
				SHEET 1 OF 1	

DWG NO: Y25647A-00  
SH 1

OFT

## ASSEMBLY PARTS LIST

Assembly Parts List For: Y25647A-00

Rev: -



Status: Released

Description: RELEASE CAM ASSY

FN	CMD	PART NUM	ECO	DESCRIPTION	MB	QTY	U/M	REF. DES./REMARKS	MFG. PN / CUSTOMER	LA	LI
1	MP	Y25648A-00		BASE, RELEASE HANDLE	M	1	Each				
2	MP	064731A-00		SHAFT RELEASE	M	1	Each				
3	MP	Y17486A-00		SEAL, COVER	M	1	Each				
4	AO	064952A-00		HANDLE RELEASE ASSY	M	1	Each				
5	MP	064729A-00		ROLL	M	2	Each				
6	MP	064730A-00		SHAFT ROLL	M	2	Each				
7	MP	066230A-00		SPRING RELEASE 1	M	1	Each				
8	MP	Y18753A-00		BUSHING, LOCKING MACHANISM	M	1	Each				
9	MP	064734A-01	P02810	BRACKET RELEASE	M	1	Each				
10	HR	00159573N		SEAL FOUR LOBE 10.20IDX2.62W	P	1	Each		59835-QRAR4111A		
11	HO	00159576N		PIN DOWEL CRES 4M6X20-A4	P	1	Each		49924-DIN7-4M6X20-A4		
12	HO	00159575N		PIN DOWEL CRES 2.5M6X20-A4	P	2	Each		49924-DIN7-2.5M6X20-A4		
13	HO	20001423L		SCREW HEX HD CRES M 5X10	P	4	Each		42323-BN624-M5X10-A4-70		
14	HO	00057449N		SCREW HEX HD CRES M 5X12 A4	P	4	Each		46210-DIN 933-M5X12-A4		
15	HO	99933187M		WASHER FLAT CRES A5.3 1.0X10X5	P	8	Each		46210-DIN 125-A5.3-A4		
16	YR	02010074K	P05568	ADHESIVE, THREADLOCKING	P	10.000	CC		52064-LOCTITE 242 ASTM D5363		
17	YR	00058579N	P05568	GREASE LUBRICANT MOLYKOTE33 MEDI	P	10.000	GM		44244-MOLYKOTE 33 MEDIUM		
18	YR	00001174N		ADHESIVE RETAINING ANAEROBIC	P	10.000	CC		52122-LOCTITE 638		
19	YR	11001068K		ACTIVATOR GRADE T YELLOW	P	10.000	CC		52064-7471 LIQUID 120 CC		

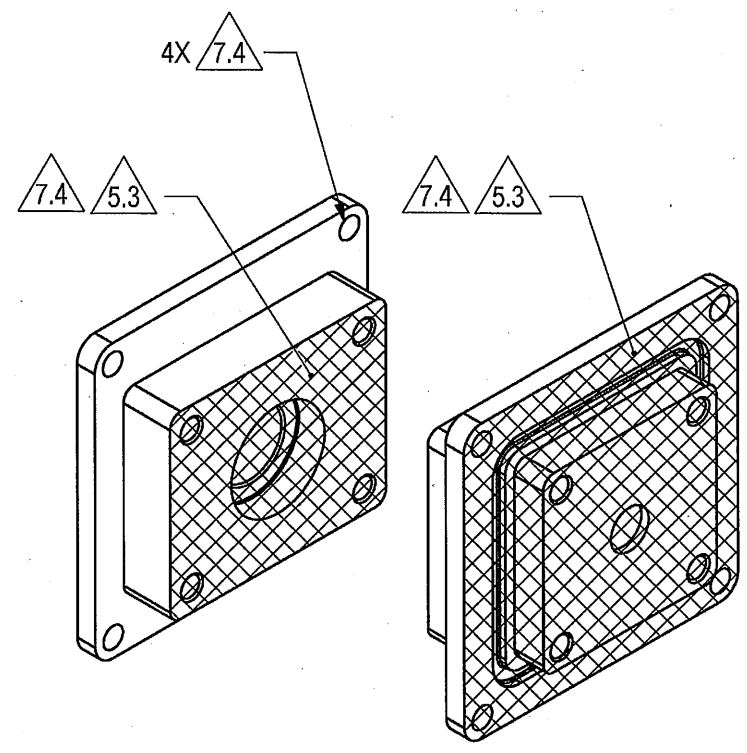
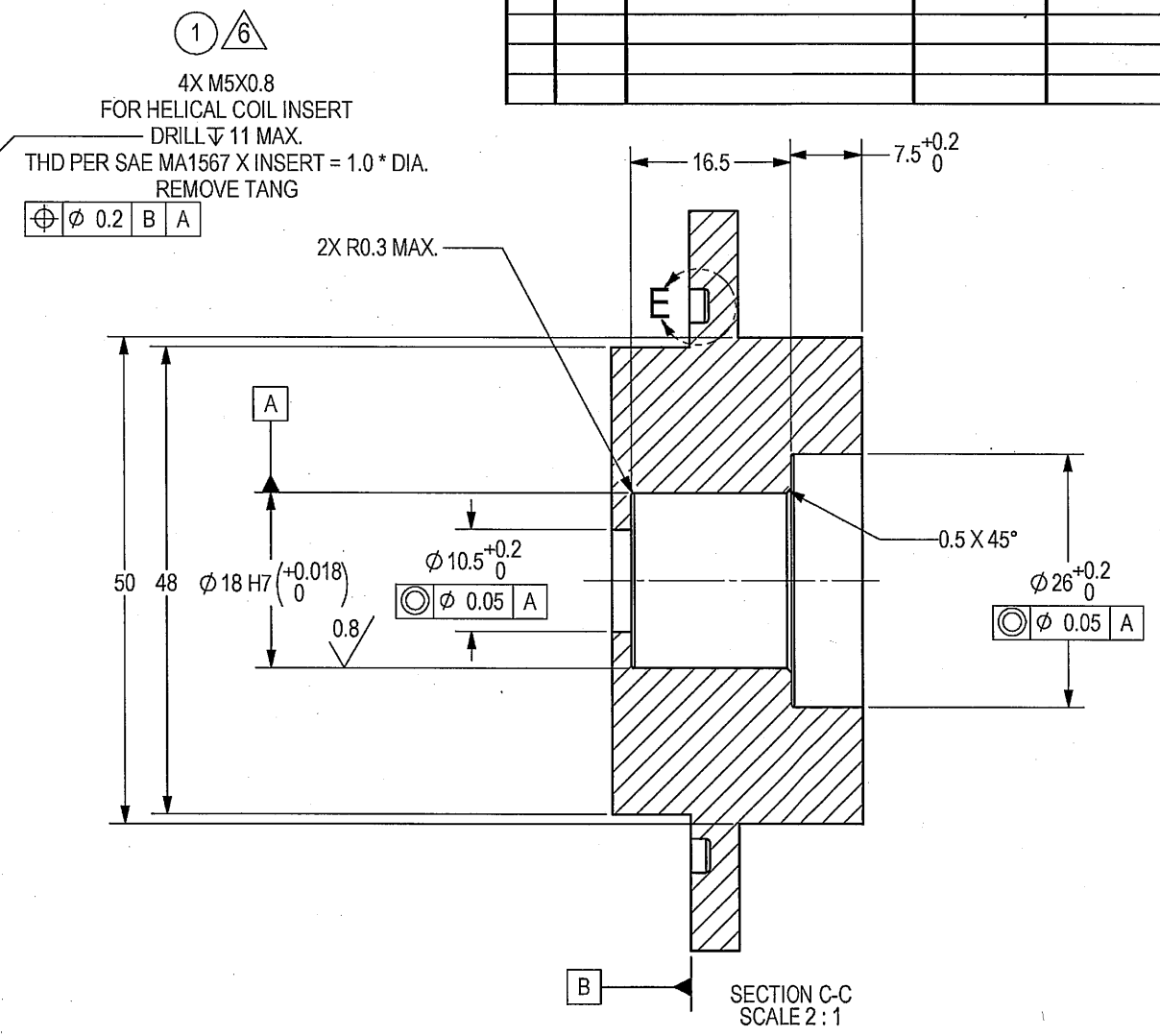
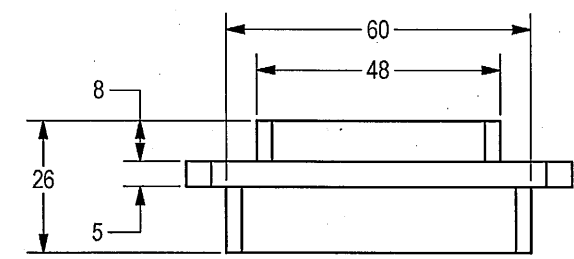
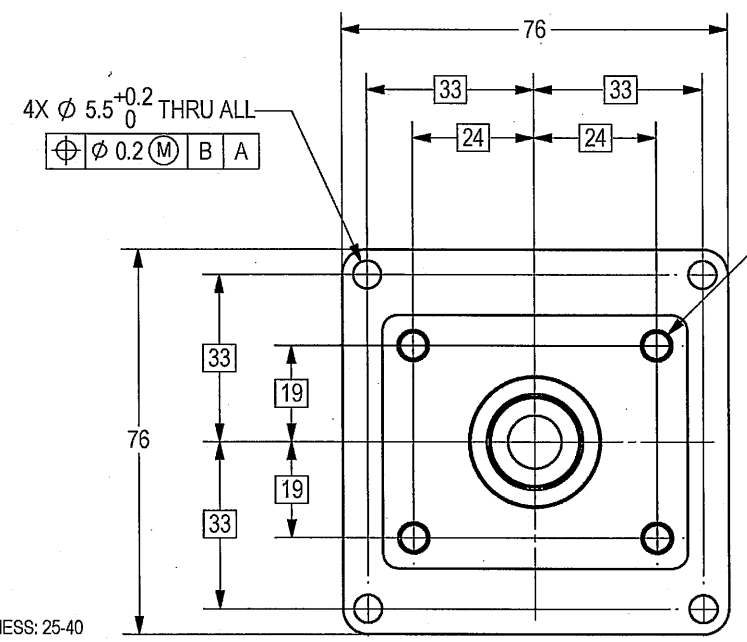
THIS DOCUMENT AND THE INFORMATION CONTAINED IN IT ARE PROPRIETARY AND CONFIDENTIAL TO OFT. NO PERSON OR ENTITY IS ALLOWED TO COPY, REPRINT, REPRODUCE OR PUBLISH ANY PART OF THIS DOCUMENT, NOR DISCLOSE ITS CONTENTS TO OTHERS, NOR MAKE ANY USE OF IT, NOR ALLOW OR ASSIST OTHERS TO MAKE ANY USE OF IT UNLESS BY THE PRIOR WRITTEN EXPRESS AUTHORIZATION OF OFT AND THEN ONLY TO THE EXTENT AUTHORIZED. COPYRIGHT-OFT.

NOTES:

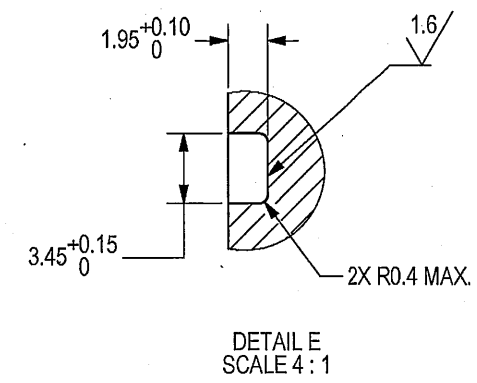
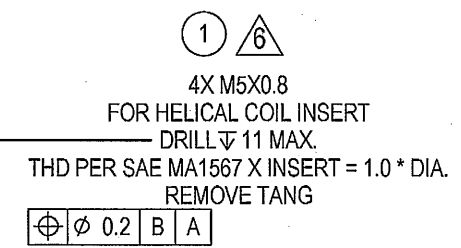
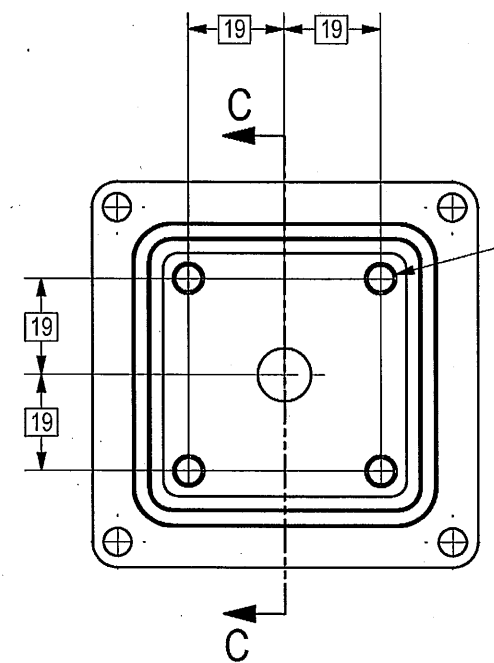
1. INTERPRET THIS DRAWING IAW ASME Y14.100M.
2. MATERIAL: ALUMINUM ALLOY PLATE 6061-T651 PER QQ-A-250/11. (EQUIVALENT ALUMINUM IS PERMITTED AFTER ELBIT APPROVAL).
3. GENERAL TOLERANCES ACCORDING TO ISO 2768-m.
4. DEBURR AND REMOVE SHARP EDGES APPROX. 0.3X45°.
5. FINISH:
  - 5.1. CHROMATIC CONVERSION COATING PER MIL-DTL-5541F, TYPE I, CLASS 3.
  - 5.2. ANODIC COATING PER MIL-A-8625 TYPE II 15 TO 25 MICRON THICK CLASS 1.
- 5.3. THE MARKED AREA , AND SPECIFIED THREADS AND HOLES SHALL BE PROTECTED AGAINST ANODIC COATING.
6. INSTALL INSERTS AFTER FINISH PER SAE MA 1567 USING PRIMER EPOXY PER MIL-P-53022.
7. PAINT:
  - 7.1. PRIMER: LEAD AND CHROMATE FREE EPOXY PRIMER PER MIL-DTL-53022 THICKNESS: 25-40 MICRONS. OR EQUIVALENT APPROVED BY ELBIT.
  - 7.2. INTERMEDIATE: APPLY TWO LAYERS OF HIGH SOLID EPOXY POLYAMIDE PER MIL-PRF-22750 TYPE II CLASS H. EACH LAYER 30-50 MICRONS.
  - 7.3. TOP COAT: APPLY TWO LAYERS OF ALIPHATIC POLYURETHANE PER MIL-PRF-85285 OR MIL-C-83286 RAL 9016 MATT. EACH LAYER 30-50 MICRONS.
- 7.4. AREAS MARKED BY , AND SPECIFIED THREADS AND HOLES MUST BE PROTECTED FROM PAINT.
8. QUALITY ASSURANCE PROVISIONS:
  - 8.1 QUALITY ASSURANCE PROVISIONS FOR THIS ITEM PER RDMQD00012P.
9. PACKAGING AND PACKING:
  - THE FINISHED PART SHALL BE PRESERVED AND PACKAGED IN ACCORDANCE WITH COMMERCIAL PRACTICE.
10. IDENTIFY PER MIL-STD-130 PARA 4.1.B, BY LABELING ITS CONTAINER WITH THE PART NUMBER. CHARACTERS MINIMUM TEXT HEIGHT 1.25 MM.

SHEET REV STATUS	
ALL SHEETS ARE THE SAME REVISION	

REVISION RECORD				
REV	ECO	DESCRIPTION	DATE	APVD
--		Released	08-Oct-18	L. Goldstein



(WEIGHT APPROX.: 0.22 Kg.)



DETAIL E SCALE 4:1

SECTION C-C SCALE 2:1

SEE ATTACHED MEDIA

3.2 / 1.6 / 0.8  
√ (M) (M)

UNLESS OTHERWISE SPECIFIED		SIGNATURE	DATE	ORDNANCE FACTORY TIRUCHIRAPPALLI	
DIMENSIONS ARE IN MM PER ASME Y14.5M - 1994		DRAWN	2/1/18	FOR: RELEASE CAM ASSY	
TOLERANCES		CHECKED	2/1/18	TITLE BASE, RELEASE HANDLE	
LINEAR	ANGULAR	HOS/DDO		OF: 12.7MM SRCG	
SEE NOTE 3	SEE NOTE 3	OFFICER/PRODN		SIZE	CAGE CODE
1st ANGLE PROJECTION		OFFICER/QC		C	2291A
		OFFICER/DDO	Dinesh	DWG NO	Y25648A-00
PROJECT OFFICER	SURFACE TEXTURE IN Micro M		4/1/18	SCALE	1:1
				AUTOMATED DRAWING (SW)	SHEET 1 OF 1

DWG NO Y25648A-00 SH 1

OFT

ASSEMBLY PARTS LIST

Assembly Parts List For: Y25648A-00

Rev: -

Status: Released

Description: BASE, RELEASE HANDLE

FN	CMD	PART NUM	ECO	DESCRIPTION	MB	QTY	U/M	REF. DES./REMARKS	MFG. PN / CUSTOMER	LA	LI
1	HM	40562003777 (99662225M)		INSERT HCOIL CRES M 5X1D	P	8	Each		53505-206M5C-0050		

2

DWG NO 064731A-00

SH 1

1

SHEET REV RECORD

ALL SHEETS ARE THE SAME REVISION

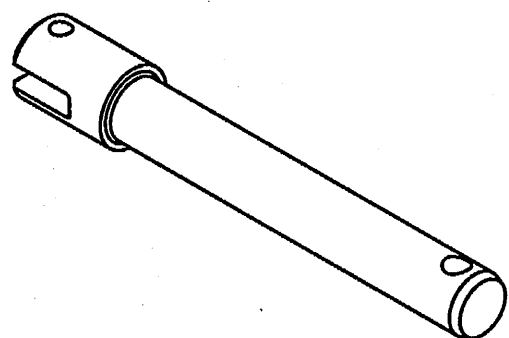
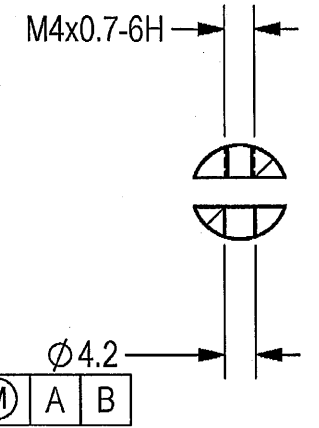
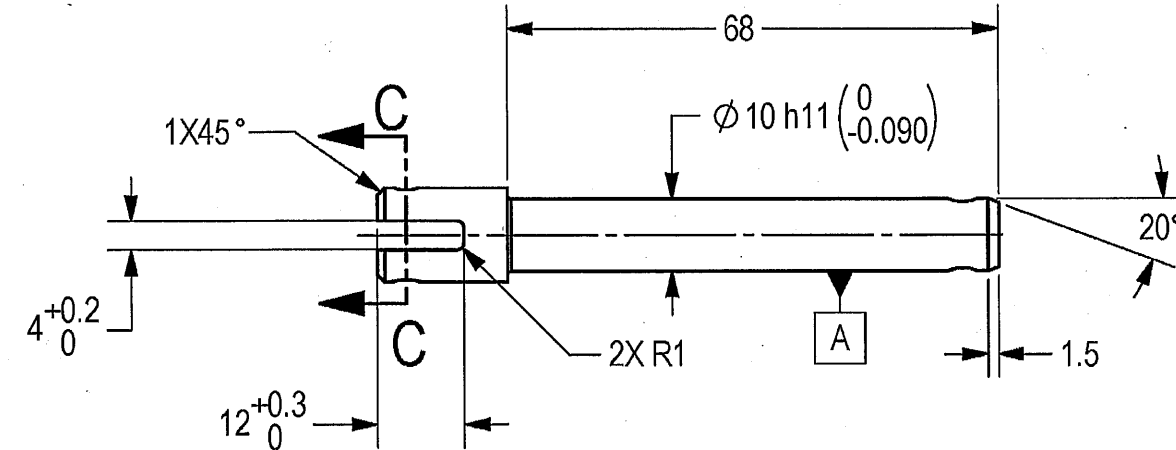
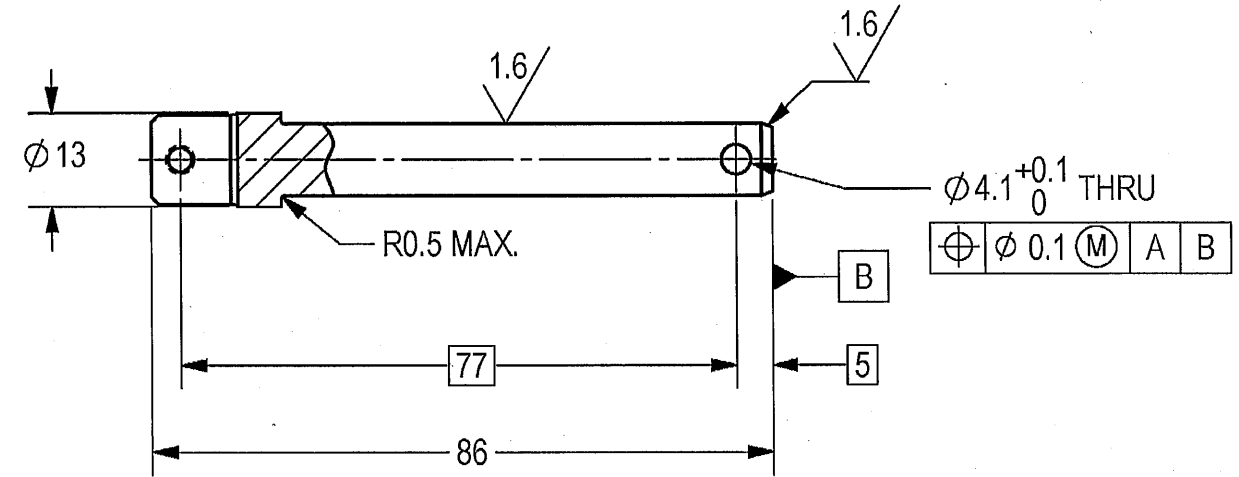
REVISION RECORD

REV	ECO	DESCRIPTION	DATE	APVD
01		2 Rework Freeze	08-Jul-12	
02		Freeze	02-Oct-12	
03		Freeze	05-Jun-13	
04		Restricted	15-Dec-13	
--	T00064	Identical To Previous Released	09-Apr-18	L. Goldshtein

THIS DOCUMENT AND THE INFORMATION CONTAINED IN IT ARE PROPRIETARY AND CONFIDENTIAL TO OFT. NO PERSON OR ENTITY IS ALLOWED TO COPY, REPRINT, REPRODUCE OR PUBLISH ANY PART OF THIS DOCUMENT, NOR DISCLOSE ITS CONTENTS TO OTHERS, NOR MAKE ANY USE OF IT, NOR ALLOW OR ASSIST OTHERS TO MAKE ANY USE OF IT UNLESS BY THE PRIOR WRITTEN EXPRESS AUTHORIZATION OF OFT AND THEN ONLY TO THE EXTENT AUTHORIZED. COPYRIGHT-OFT.

NOTES:

1. INTERPRET THIS DRAWING IAW ASME Y14.100M.
2. MATERIAL: CRES rod TYPE 303 PER ASTM-A-582 (EQUIVALENT STEEL IS PERMITTED AFTER ELBIT APPROVAL).
3. DEBURR AND REMOVE SHARP EDGES APPROX. 0.3X45°.
4. PASSIVATION TREATMENT PER AMS-2700 METHOD 1 TYPE 6.
5. QUALITY ASSURANCE PROVISIONS:  
5.1 QUALITY ASSURANCE PROVISIONS FOR THIS ITEM PER RDMQD00012P.
6. PACKAGING AND PACKING:  
THE FINISHED PART SHALL BE PRESERVED AND PACKAGED IN ACCORDANCE WITH COMMERCIAL PRACTICE.
7. IDENTIFY PER MIL-STD-130 PARA 4.1.B, BY LABELING ITS CONTAINER WITH THE PART NUMBER. CHARACTERS MINIMUM TEXT HEIGHT 1.25 MM.



(WEIGHT APPROX.: 0.054 Kg.)

SEE ATTACHED MEDIA

UNLESS OTHERWISE SPECIFIED		SIGNATURE	DATE	<b>ORDNANCE FACTORY TIRUCHIRAPPALLI</b>	
DIMENSIONS ARE IN MM PER ASME Y14.5M -1994		DRAWN	21/12/20		
TOLERANCES		CHECKED		TITLE	
LINEAR	ANGULAR	HOS/DDO	21/12/20	SHAFT RELEASE	
±0.2	±0.5°	OFFICER/PRODN		FOR: RELEASE CAM ASSY	
1st. ANGLE PROJECTION		OFFICER/QC		OF: 12.7MM SRCG	
SURFACE TEXTURE IN Micro M		OFFICER/DDO	21/12/20	SIZE	CAGE CODE
				B	2291A
				DWG NO	064731A-00
				SCALE	1:1
				AUTOMATED DRAWING (SW)	
				SHEET	1 OF 1

PROJECT OFFICER  
*Imma*

PLM Control

2

1

SHEET REV RECORD

ALL SHEETS ARE THE SAME REVISION

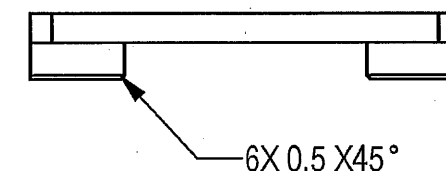
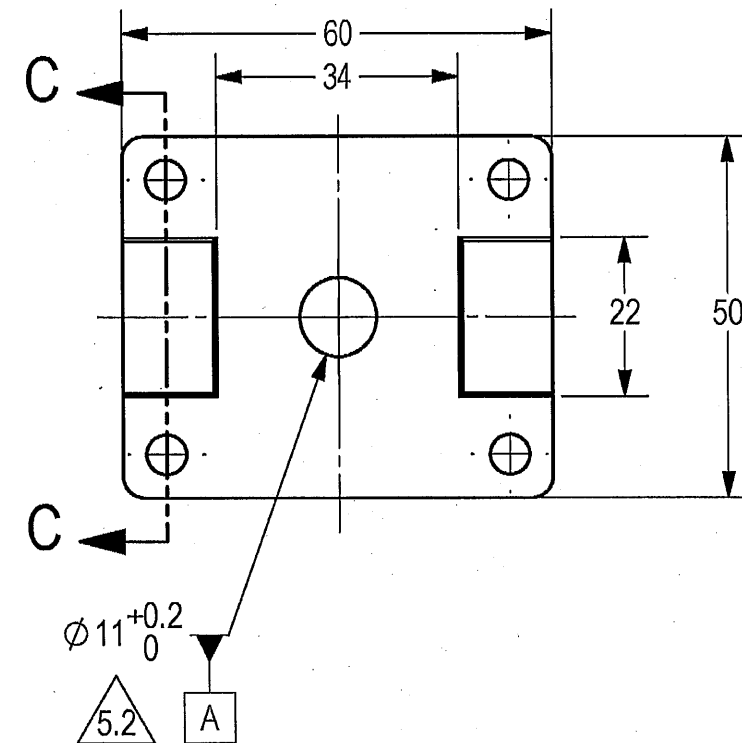
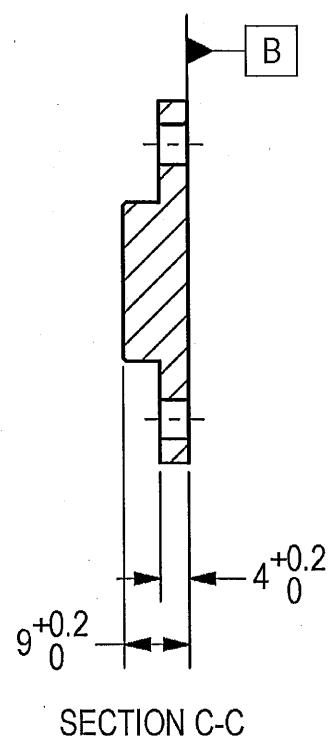
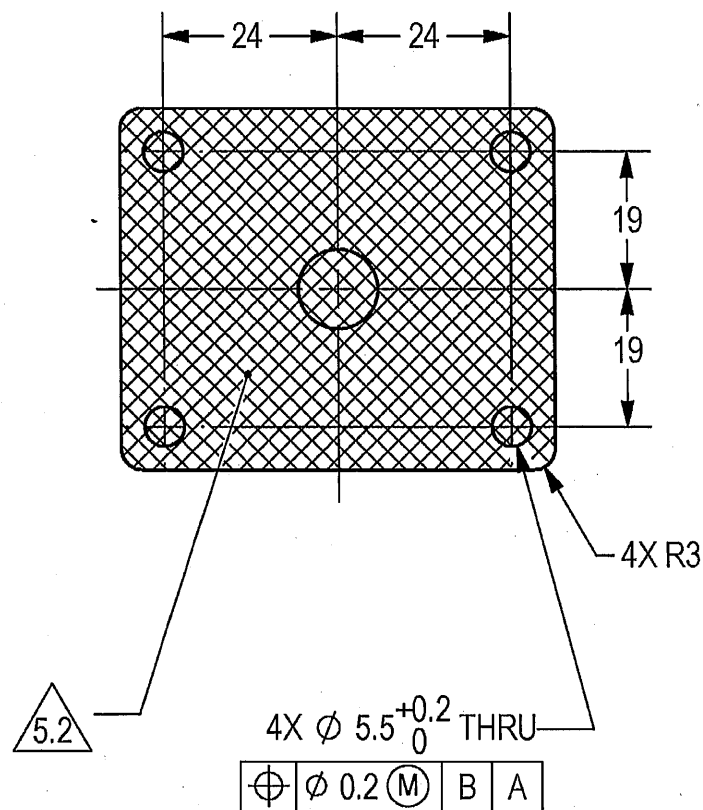
REVISION RECORD

REV	ECO	DESCRIPTION	DATE	APVD
01		Freeze	14-Sep-17	E. Reshef
02		Freeze	17-Oct-17	O. Berman
03		Freeze	13-Dec-17	M. Tal
--		Released	30-Apr-18	L. Goldshtein

THIS DOCUMENT AND THE INFORMATION CONTAINED IN IT ARE PROPRIETARY AND CONFIDENTIAL TO OFT. NO PERSON OR ENTITY IS ALLOWED TO COPY, REPRINT, REPRODUCE OR PUBLISH ANY PART OF THIS DOCUMENT, NOR DISCLOSE ITS CONTENTS TO OTHERS, NOR MAKE ANY USE OF IT, NOR ALLOW OR ASSIST OTHERS TO MAKE ANY USE OF IT UNLESS BY THE PRIOR WRITTEN EXPRESS AUTHORIZATION OF OFT AND THEN ONLY TO THE EXTENT AUTHORIZED. COPYRIGHT-OFT.

NOTES:

- INTERPRET THIS DRAWING IAW ASME Y14.100M.
- MATERIAL: CRES PLATE TYPE 17-4 PH PER AMS 5604, HEAT TREAT TO H1150 PER MIL-H-6785 CLASS D. (EQUIVALENT STEEL IS PERMITTED AFTER ELBIT APPROVAL).
- GENERAL TOLERANCES ACCORDING TO ISO 2768-m.
- DEBURR AND REMOVE SHARP EDGES APPROX. 0.3X45°.
- FINISH:
  - DRY FILM LUBRICATION IN A FLUOROPOLYMER ORGANIC RESIN SOLVENT COLOR BLACK CLASS 2 TYPE 1, 30-40 MICRON THICK PER VS-1-3-1-165 (OR EQUIVALENT).
  - THREADS AND AREAS MARKED BY MUST BE PROTECTED AGAINST BLACK-T.
  - BAKE PART AFTER PLATING WITHIN 3 HOURS PER AMS-2759/9 TABLE 1 FOR 3 HOURS MINIMUM AT 191°C.
- QUALITY ASSURANCE PROVISIONS:
  - QUALITY ASSURANCE PROVISIONS FOR THIS ITEM PER RDMQD00012P.
- PACKAGING AND PACKING: THE FINISHED PART SHALL BE PRESERVED AND PACKAGED IN ACCORDANCE WITH COMMERCIAL PRACTICE.
- IDENTIFY PER MIL-STD-130 PARA 4.1.B, BY LABELING ITS CONTAINER WITH THE PART NUMBER. CHARACTERS MINIMUM TEXT HEIGHT 1.25 MM.



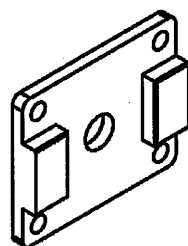
SEE ATTACHED MEDIA

B

B

A

A



(WEIGHT APPROX.: 0.1 Kg.)

UNLESS OTHERWISE SPECIFIED		SIGNATURE	DATE	<p>ORDNANCE FACTORY TIRUCHIRAPPALLI</p>	
DIMENSIONS ARE IN MM PER ASME Y14.5 - 2009		DRAWN	21.12.18		
TOLERANCES		CHECKED		TITLE	
LINEAR	ANGULAR	HOS/DDO	21/12/2018	SEAL, COVER	
SEE NOTE 3	SEE NOTE 3	OFFICER/PRODN		SIZE	CAGE CODE
1st. ANGLE PROJECTION		OFFICER/QC		B	2291A
		OFFICER/DDO	21/12/2018	DWG NO	Y17486A-00
SURFACE TEXTURE IN MicroMeter				SCALE	1:1
PROJECT OFFICER				AUTOMATED DRAWING (SW)	SHEET 1 OF 1
PLM Control B		EPDM DRAWING REV	EPDM MODEL REV	EPDM MODEL STATUS	EPDM MODEL NAME
					Y17486A-00

2

DWG NO 064952A-00

SH 1

1

SHEET REV RECORD

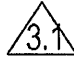
ALL SHEETS ARE THE SAME REVISION

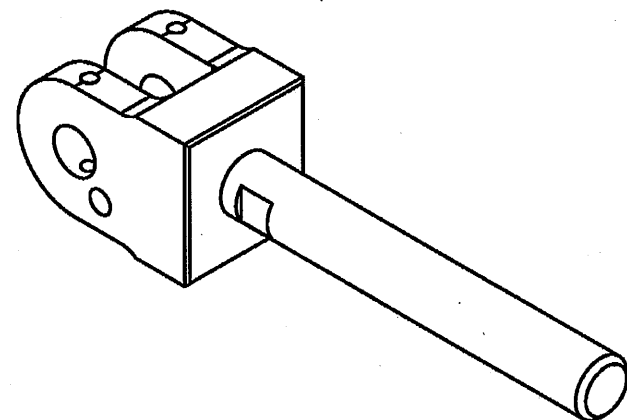
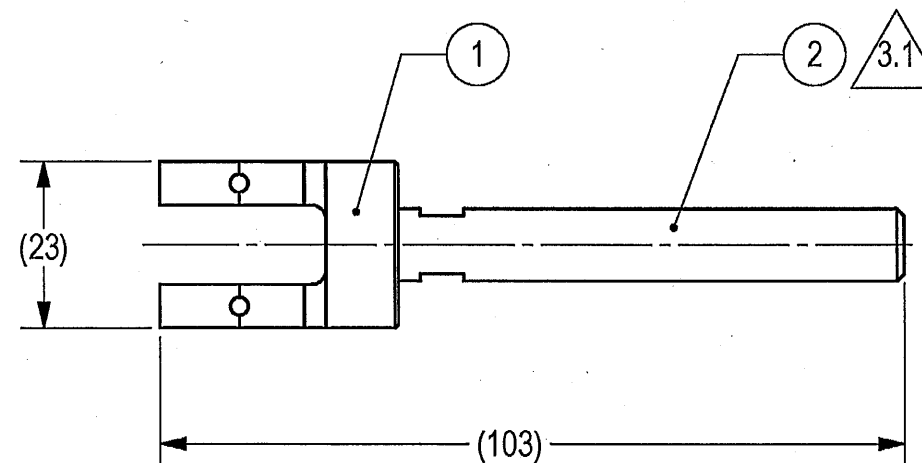
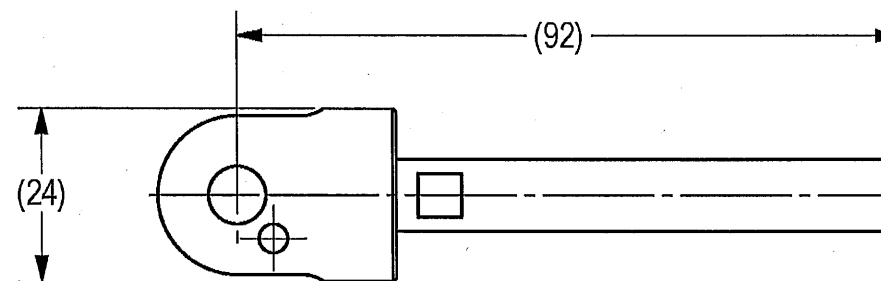
REVISION RECORD

REV	ECO	DESCRIPTION	DATE	APVD
01		Freeze	08-Jul-12	
02	P05567/00	Freeze	31-Dec-13	
03		Restricted	24-Feb-14	L. Goldshtein
--	T00064	Identical To Previous Released	09-Apr-18	L. Goldshtein

THIS DOCUMENT AND THE INFORMATION CONTAINED IN IT ARE PROPRIETARY AND CONFIDENTIAL TO OFT. NO PERSON OR ENTITY IS ALLOWED TO COPY, REPRINT, REPRODUCE OR PUBLISH ANY PART OF THIS DOCUMENT, NOR DISCLOSE ITS CONTENTS TO OTHERS, NOR MAKE ANY USE OF IT, NOR ALLOW OR ASSIST OTHERS TO MAKE ANY USE OF IT UNLESS BY THE PRIOR WRITTEN EXPRESS AUTHORIZATION OF OFT AND THEN ONLY TO THE EXTENT AUTHORIZED. COPYRIGHT-OFT.

NOTES:

1. INTERPRET THIS DRAWING IAW ASME Y14.100M.
2. UNLESS OTHERWISE SPECIFIED THE REQUIREMENTS OF MIL-STD-454 APPLY.
3. TIGHTEN TORQUE:  
 16 ± 5% Nm
4. APPLY F/N 3 ON THREAD.
5. QUALITY ASSURANCE PROVISIONS:  
 5.1 QUALITY ASSURANCE PROVISIONS FOR THIS ITEM PER RDMQD00012P.
6. PARENTHETICAL FIGURES ARE FOR REFERENCE ONLY.
7. PACKAGING AND PACKING:  
 THE FINISHED PART SHALL BE PRESERVED AND PACKAGED IN ACCORDANCE WITH MANUFACTURER'S BEST COMMERCIAL PRACTICE.
8. IDENTIFY PER MIL-STD-130 PARA 4.1.B, BY LABELING ITS CONTAINER WITH THE PART NUMBER. CHARACTERS MINIMUM TEXT HEIGHT 1.25 MM.



(WEIGHT APPROX.: 0.122 Kg.)

SEE SEPARATE PARTS LIST

UNLESS OTHERWISE SPECIFIED	DRAWN	SIGNATURE	DATE	ORDNANCE FACTORY TIRUCHIRAPPALLI	
DIMENSIONS ARE IN MM PER ASME Y14.5M - 1994	CHECKED	<i>[Signature]</i>	21-12-20	TITLE	
TOLERANCES LINEAR      ANGULAR	HOS/DDO	<i>[Signature]</i>	21/12/20	HANDLE RELEASE ASSY	
1st ANGLE PROJECTION	OFFICER/PRODN			FOR: RELEASE CAM ASSY	OF: 12.7MM SRCG
SURFACE TEXTURE IN Micro M	OFFICER/QC			SIZE	CAGE CODE
	OFFICER/DDO	<i>[Signature]</i>	21/12/20	B	2291A
				DWG NO	064952A-00
				SCALE 1:1	AUTOMATED DRAWING (SW)
					SHEET 1 OF 1

*[Signature]*  
PROJECT OFFICER

PLM Control

1

2

B

B

A

A

OFT

**ASSEMBLY PARTS LIST**

Assembly Parts List For: 064952A-00

Rev: -

Status: Released

Description: HANDLE RELEASE ASSY

FN	CMD	PART NUM	ECO	DESCRIPTION	MB	QTY	U\M	REF. DES./REMARKS	MFG. PN / CUSTOMER	LA	LI
1	MP	064727A-00		CAM RELEASE	M	1	Each				
2	MP	064728A-00		HANDLE RELEASE CAM	M	1	Each				
3	YR	02010074K	P05567	ADHESIVE, THREADLOCKING	P	10.000	CC		43201-OMNIFIT 100M		



THIS DOCUMENT AND THE INFORMATION CONTAINED IN IT ARE PROPRIETARY AND CONFIDENTIAL TO OFT. NO PERSON OR ENTITY IS ALLOWED TO COPY, REPRINT, REPRODUCE OR PUBLISH ANY PART OF THIS DOCUMENT, NOR DISCLOSE ITS CONTENTS TO OTHERS, NOR MAKE ANY USE OF IT, NOR ALLOW OR ASSIST OTHERS TO MAKE ANY USE OF IT UNLESS BY THE PRIOR WRITTEN EXPRESS AUTHORIZATION OF OFT AND THEN ONLY TO THE EXTENT AUTHORIZED.  
COPYRIGHT-OFT.

SHEET REV RECORD

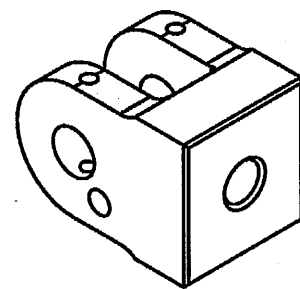
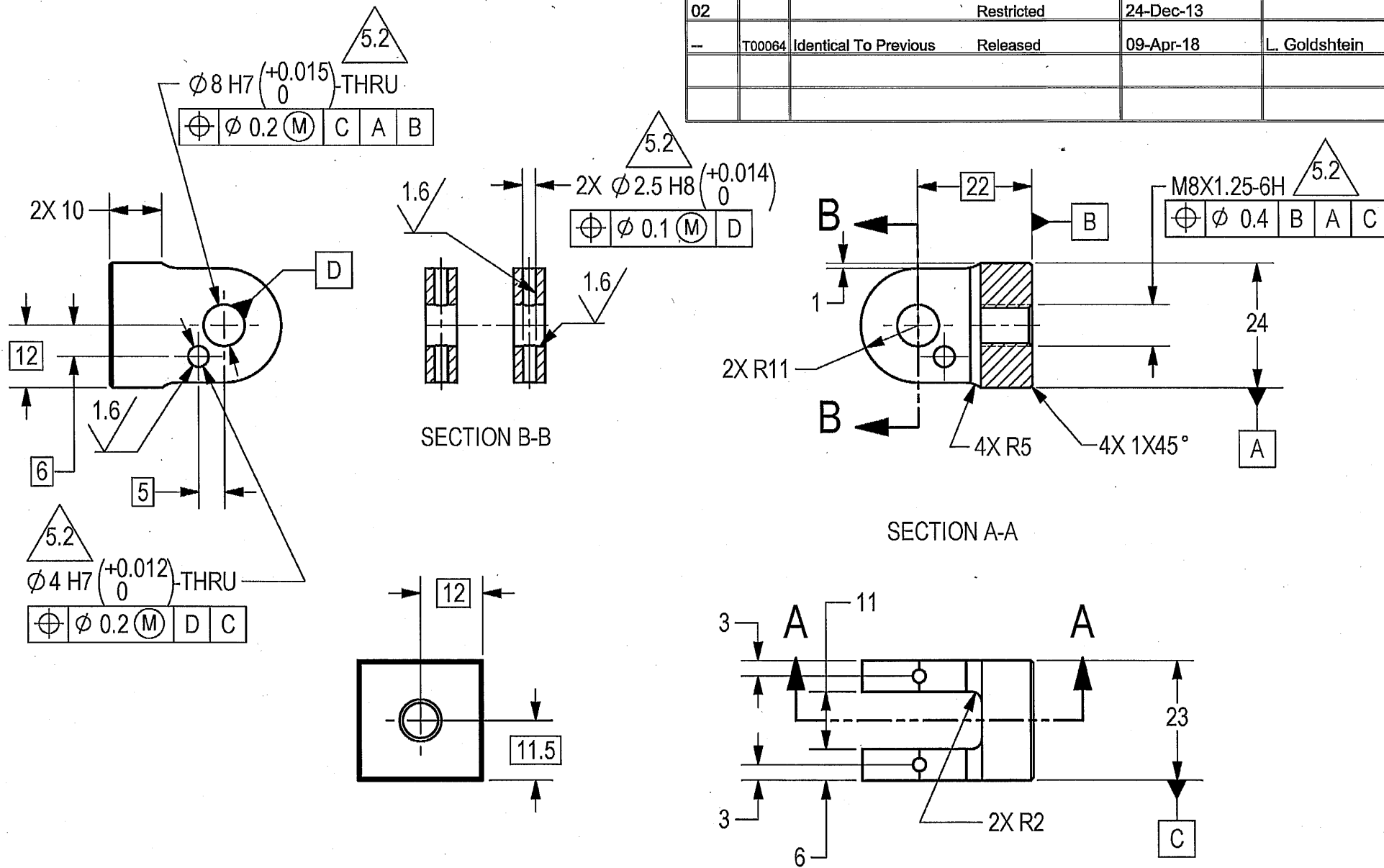
ALL SHEETS ARE THE SAME REVISION

REVISION RECORD

REV	ECO	DESCRIPTION	DATE	APVD
01		Freeze	08-Jul-12	
02		Restricted	24-Dec-13	
--	T00064	Identical To Previous Released	09-Apr-18	L. Goldshtein

NOTES:

- INTERPRET THIS DRAWING IAW ASME Y14.100M.
- MATERIAL: CRES ROD TYPE 17-4 PH PER AMS 5643. (EQUIVALENT STEEL IS PERMITTED AFTER ELBIT APPROVAL).
- HEAT TREATMENT: HEAT TREATMENT TO H1100 PER MIL-H-6785 CLASS D.
- DEBURR AND REMOVE SHARP EDGES APPROX. 0.3X45°.
- FINISH:
  - A DRY FILM LUBRICATION IN A FLUOROPOLYMER ORGANIC RESIN SOLVENT COLOR BLACK CLASS 2 TYPE I, 25 MICRON THICK per VS-1-3-1-165 (or equivalent).
  - PROTECT SPECIFIED THREADS AND HOLE AGAINST BLACK-T.
- BAKE PART AFTER PLATING WITHIN 4 HOURS PER ASTM B 850 CLASS E12.
- QUALITY ASSURANCE PROVISIONS: 7.1 QUALITY ASSURANCE PROVISIONS FOR THIS ITEM PER RDMQD00012P.
- PACKAGING AND PACKING: THE FINISHED PART SHALL BE PRESERVED AND PACKAGED IN ACCORDANCE WITH COMMERCIAL PRACTICE.
- IDENTIFY PER MIL-STD-130 PARA 4.1.B, BY LABELING ITS CONTAINER WITH THE PART NUMBER. CHARACTERS MINIMUM TEXT HEIGHT 1.25 MM.



(WEIGHT APPROX.: 0.076 Kg.)

SEE ATTACHED MEDIA

UNLESS OTHERWISE SPECIFIED		SIGNATURE	DATE	ORDNANCE FACTORY TIRUCHIRAPPALLI	
DIMENSIONS ARE IN MM PER ASME Y14.5M - 1994		DRAWN	21/12/2012	FOR: RELEASE CAM ASSY	
TOLERANCES		CHECKED		CAM RELEASE	
LINEAR	ANGULAR	HOS/DDO	21/12	OF: 12.7MM SRCG	
±0.2	±0.5°	OFFICER/PRODN		SIZE	CAGE CODE
1st ANGLE PROJECTION		OFFICER/QC		B	2291A
SURFACE TEXTURE IN Micro M		OFFICER/DDO	21/12/2012	DWG NO	064727A-00
PROJECT OFFICER		PLM Control		SCALE	1:1
				AUTOMATED DRAWING (SW)	SHEET 1 OF 1

2

DWG NO 064728A-00

SH 1

1

SHEET REV RECORD

ALL SHEETS ARE THE SAME REVISION

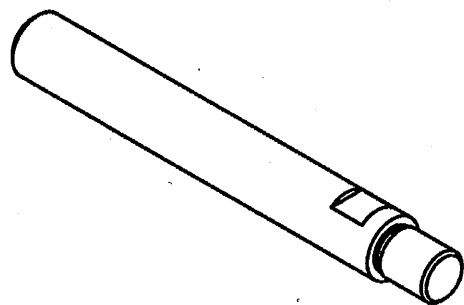
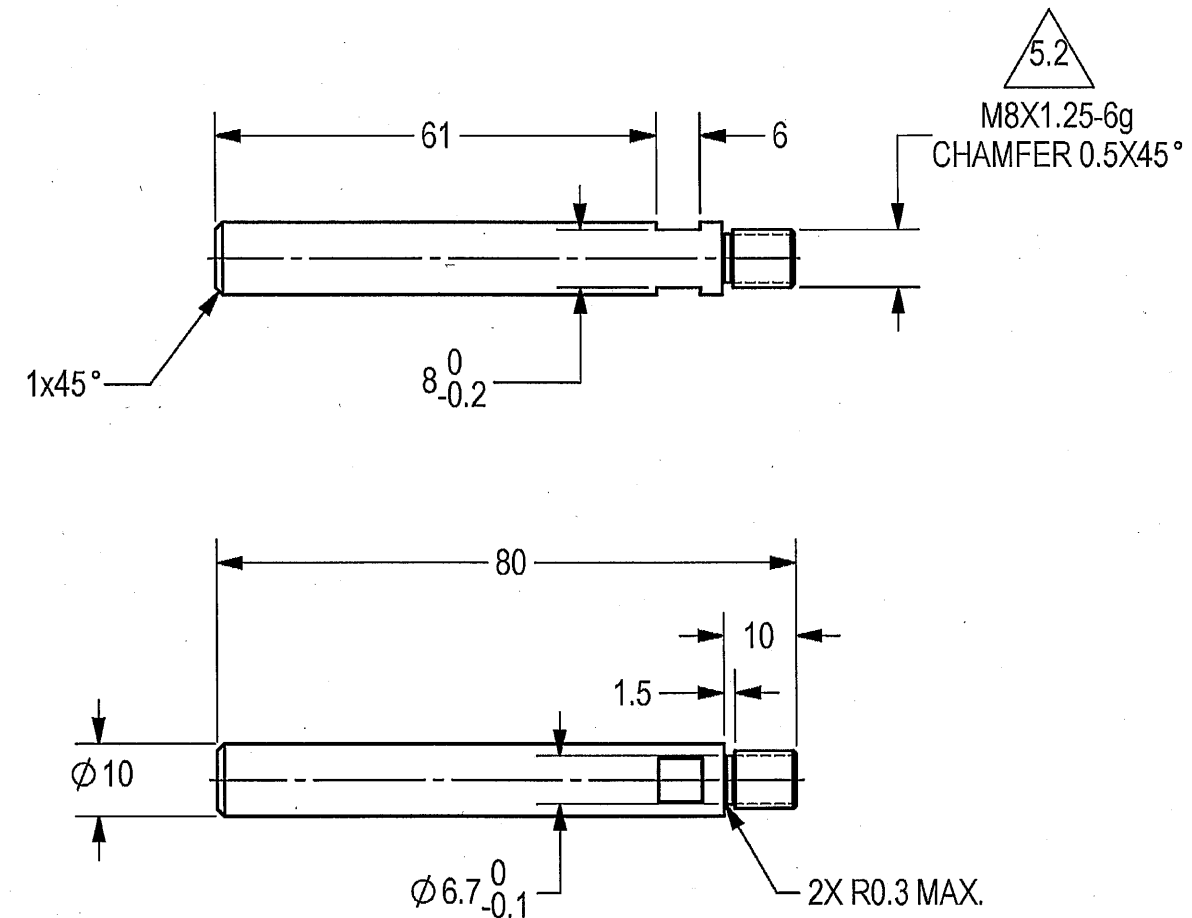
REVISION RECORD

REV	ECO	DESCRIPTION	DATE	APVD
01		Freeze	08-Jul-12	
02		Restricted	09-Jan-14	
--	T00064	Identical To Previous Released	09-Apr-18	L. Goldshtein

THIS DOCUMENT AND THE INFORMATION CONTAINED IN IT ARE PROPRIETARY AND CONFIDENTIAL TO OFT. NO PERSON OR ENTITY IS ALLOWED TO COPY, REPRINT, REPRODUCE OR PUBLISH ANY PART OF THIS DOCUMENT, NOR DISCLOSE ITS CONTENTS TO OTHERS, NOR MAKE ANY USE OF IT, NOR ALLOW OR ASSIST OTHERS TO MAKE ANY USE OF IT UNLESS BY THE PRIOR WRITTEN EXPRESS AUTHORIZATION OF OFT AND THEN ONLY TO THE EXTENT AUTHORIZED. COPYRIGHT-OFT.

NOTES:

- INTERPRET THIS DRAWING IAW ASME Y14.100M.
- MATERIAL: CRES ROD TYPE 17-4 PH PER AMS 5643. (EQUIVALENT STEEL IS PERMITTED AFTER ELBIT APPROVAL).
- HEAT TREATMENT: HEAT TREATMENT TO H1150 PER MIL-H-6785 CLASS D.
- DEBURR AND REMOVE SHARP EDGES APPROX. 0.3X45°.
- FINISH:
  - A DRY FILM LUBRICATION IN A FLUOROPOLYMER ORGANIC RESIN SOLVENT COLOR BLACK CLASS 2 TYPE I, 25 MICRON THICK per VS-1-3-1-165 (or equivalent).
  - PROTECT SPECIFIED THREADS AND HOLE AGAINST BLACK-T.
- BAKE PART AFTER PLATING WITHIN 3 HOURS PER MIL-OTL-16232 TABLE I FOR 8 HOURS AT 98 °C TO 107 °C.
- QUALITY ASSURANCE PROVISIONS: 7.1 QUALITY ASSURANCE PROVISIONS FOR THIS ITEM PER RDMQD00012P.
- PACKAGING AND PACKING: THE FINISHED PART SHALL BE PRESERVED AND PACKAGED IN ACCORDANCE WITH COMMERCIAL PRACTICE.
- IDENTIFY PER MIL-STD-130 PARA 4.1.B, BY LABELING ITS CONTAINER WITH THE PART NUMBER. CHARACTERS MINIMUM TEXT HEIGHT 1.25 MM.



(WEIGHT APPROX.: 0.046 Kg.)

2

SEE ATTACHED MEDIA

UNLESS OTHERWISE SPECIFIED		SIGNATURE	DATE	ORDNANCE FACTORY TIRUCHIRAPPALLI	
DIMENSIONS ARE IN MM PER ASME Y14.5M - 1994		DRAWN	21/12/20	FOR: RELEASE CAM ASSY	
TOLERANCES		CHECKED		OF: 12.7MM SRGG	
LINEAR	ANGULAR	HOS/DDO	21/12/20	TITLE	
±0.2	±0.5°	OFFICER/PRODN		HANDLE RELEASE CAM	
1st ANGLE PROJECTION		OFFICER/QC		SIZE	CAGE CODE
SURFACE TEXTURE IN Micro M		OFFICER/DDO	21/12/20	B	2291A
PROJECT OFFICER				DWG NO	064728A-00
PLM Control				SCALE	1:1
				AUTOMATED DRAWING (SW)	SHEET 1 OF 1

2

PLM Control

1

B

B

A

A

2

DWG NO 064729A-00

SH 1

1

SHEET REV RECORD

ALL SHEETS ARE THE SAME REVISION

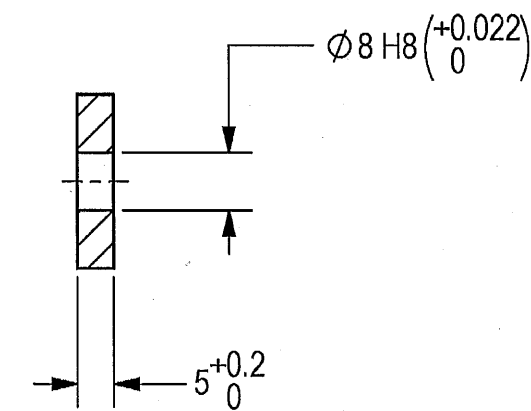
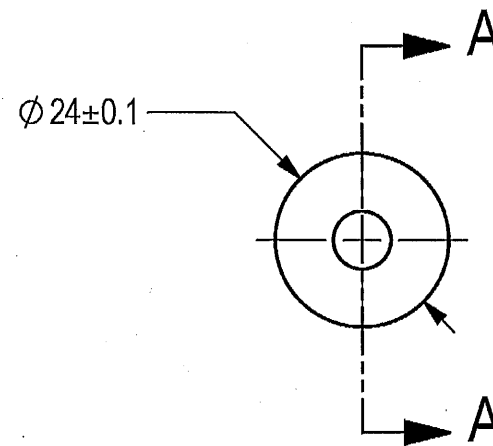
REVISION RECORD

REV	ECO	DESCRIPTION	DATE	APVD
01		Freeze	08-Jul-12	
02		Restricted	25-Dec-13	
--	T00064	Identical To Previous Released	09-Apr-18	L. Goldshtein

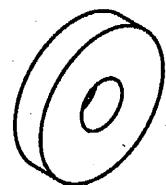
THIS DOCUMENT AND THE INFORMATION CONTAINED IN IT ARE PROPRIETARY AND CONFIDENTIAL TO OFT. NO PERSON OR ENTITY IS ALLOWED TO COPY, REPRINT, REPRODUCE OR PUBLISH ANY PART OF THIS DOCUMENT, NOR DISCLOSE ITS CONTENTS TO OTHERS, NOR MAKE ANY USE OF IT, NOR ALLOW OR ASSIST OTHERS TO MAKE ANY USE OF IT UNLESS BY THE PRIOR WRITTEN EXPRESS AUTHORIZATION OF OFT AND THEN ONLY TO THE EXTENT AUTHORIZED.  
COPYRIGHT-OF T.

NOTES:

1. INTERPRET THIS DRAWING IAW ASME Y14.100M.
2. MATERIAL: CRES ROD TYPE 17-4 PH PER AMS 5643.  
(EQUIVALENT STEEL IS PERMITTED AFTER ELBIT APPROVAL).
3. HEAT TREATMENT:  
HEAT TREATMENT TO H1150 PER MIL-H-6785 CLASS D.
4. DEBURR AND REMOVE SHARP EDGES APPROX. 0.3X45°.
5. GENERAL TOLERANCES ACCORDING TO ISO 2768-m.
6. FINISH:  
6.1 A DRY FILM LUBRICATION IN A FLUOROPOLYMER ORGANIC RESIN SOLVENT COLOR BLACK CLASS 1 TYPE I, 25 MICRON THICK per VS-1-3-1-165 (or equivalent).
7. BAKE PART AFTER PLATING WITHIN 3 HOURS PER ASTM B 850 CLASS E12.
8. QUALITY ASSURANCE PROVISIONS:  
8.1 QUALITY ASSURANCE PROVISIONS FOR THIS ITEM PER RDMQD00012P.
9. PACKAGING AND PACKING:  
THE FINISHED PART SHALL BE PRESERVED AND PACKAGED IN ACCORDANCE WITH COMMERCIAL PRACTICE.
10. IDENTIFY PART PER MIL-STD-130 PARA 4.1.B. BY LABELLING ITS CONTAINER WITH THE PART NUMBER.  
CHARACTERS 1.25 MM HIGH.




SECTION A-A



(WEIGHT APPROX.: 0.015 Kg.)

SEE ATTACHED MEDIA

UNLESS OTHERWISE SPECIFIED		SIGNATURE	DATE	 <b>ORDNANCE FACTORY TIRUCHIRAPPALLI</b>	
DIMENSIONS ARE IN MM PER ASME Y14.5M-1994		DRAWN	21/12/20		
TOLERANCES		CHECKED		TITLE	
LINEAR	ANGULAR	HOS/DDO	21/12/20	ROLL	
SEE NOTE 5	SEE NOTE 5	OFFICER/PRODN		SIZE	CAGE CODE
1st ANGLE PROJECTION		OFFICER/QC		B	2291A
SURFACE TEXTURE IN Micro M		OFFICER/DDO	21/12/20	DWG NO	064729A-00
PROJECT OFFICER		PLM Control		SCALE 1:1	AUTOMATED DRAWING (SW)
				SHEET 1 OF 1	

2

1

2

DWG NO 064730A-00

SH 1

1

SHEET REV RECORD

ALL SHEETS ARE THE SAME REVISION

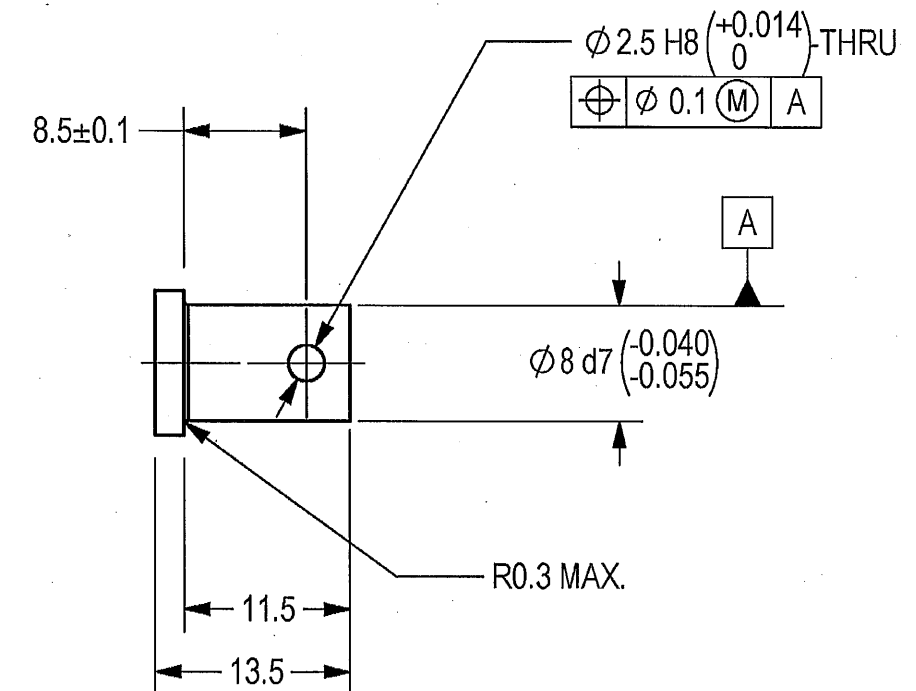
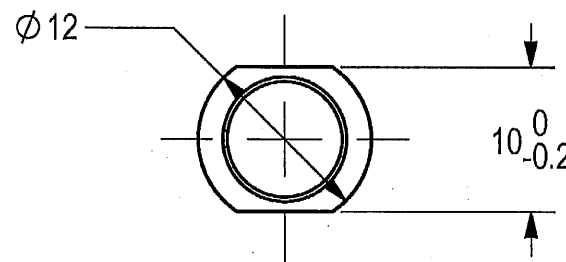
REVISION RECORD

REV	ECO	DESCRIPTION	DATE	APVD
01		Freeze	08-Jul-12	
02		Restricted	24-Dec-13	
03	VY212/00	Restricted	12-May-15	D. Nave
--	T00064	Identical To Previous	09-Apr-18	L. Goldshtein

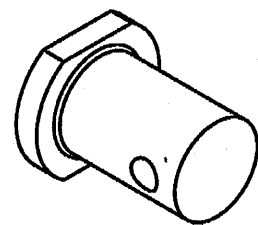
THIS DOCUMENT AND THE INFORMATION CONTAINED IN IT ARE PROPRIETARY AND CONFIDENTIAL TO OFT. NO PERSON OR ENTITY IS ALLOWED TO COPY, REPRINT, REPRODUCE OR PUBLISH ANY PART OF THIS DOCUMENT, NOR DISCLOSE ITS CONTENTS TO OTHERS, NOR MAKE ANY USE OF IT, NOR ALLOW OR ASSIST OTHERS TO MAKE ANY USE OF IT UNLESS BY THE PRIOR WRITTEN EXPRESS AUTHORIZATION OF OFT AND THEN ONLY TO THE EXTENT AUTHORIZED.  
COPYRIGHT-OFT.

NOTES:

1. INTERPRET THIS DRAWING IAW ASME Y14.100M.
2. MATERIAL: CRES ROD TYPE 17-4 PH PER AMS 5643. (EQUIVALENT STEEL IS PERMITTED AFTER ELBIT APPROVAL).
3. HEAT TREATMENT: HEAT TREATMENT TO H1150 PER MIL-H-6785 CLASS D.
4. DEBURR AND REMOVE SHARP EDGES APPROX. 0.3X45°.
5. PASSIVATION TREATMENT PER AMS-2700 METHOD 1 TYPE 8.
6. QUALITY ASSURANCE PROVISIONS:  
6.1 QUALITY ASSURANCE PROVISIONS FOR THIS ITEM PER RDMQD00012P.
7. PACKAGING AND PACKING:  
THE FINISHED PART SHALL BE PRESERVED AND PACKAGED IN ACCORDANCE WITH COMMERCIAL PRACTICE.
8. IDENTIFY PER MIL-STD-130 PARA 4.1.B, BY LABELING ITS CONTAINER WITH THE PART NUMBER. CHARACTERS MINIMUM TEXT HEIGHT 1.25 MM



SEE ATTACHED MEDIA



(WEIGHT APPROX.: 0.006 Kg.)

UNLESS OTHERWISE SPECIFIED		SIGNATURE	DATE	<p><b>ORDNANCE FACTORY</b> TIRUCHIRAPPALLI</p>	
DIMENSIONS ARE IN MM PER ASME Y14.5M - 1994		DRAWN	21/12/20		
TOLERANCES		CHECKED		TITLE	
LINEAR	ANGULAR	HOS/DDO	P. Torla	SHAFT ROLL	
±0.2	±0.5°	OFFICER/PRODN	21/12/20	FOR: RELEASE CAM ASSY	
1st ANGLE PROJECTION		OFFICER/QC		OF: 12.7MM SRCG	
SURFACE TEXTURE IN Micro M		OFFICER/DDO	Dinesh	SIZE	CAGE CODE
1.6			21/12/20	B	2291A
PROJECT OFFICER				DWG NO	064730A-00
PLM Control				SCALE	2:1
				AUTOMATED DRAWING (SW)	SHEET 1 OF 1

2

1

THIS DOCUMENT AND THE INFORMATION CONTAINED IN IT ARE PROPRIETARY AND CONFIDENTIAL TO OFT. NO PERSON OR ENTITY IS ALLOWED TO COPY, REPRINT, REPRODUCE OR PUBLISH ANY PART OF THIS DOCUMENT, NOR DISCLOSE ITS CONTENTS TO OTHERS, NOR MAKE ANY USE OF IT, NOR ALLOW OR ASSIST OTHERS TO MAKE ANY USE OF IT UNLESS BY THE PRIOR WRITTEN EXPRESS AUTHORIZATION OF OFT AND THEN ONLY TO THE EXTENT AUTHORIZED. COPYRIGHT-OFT.

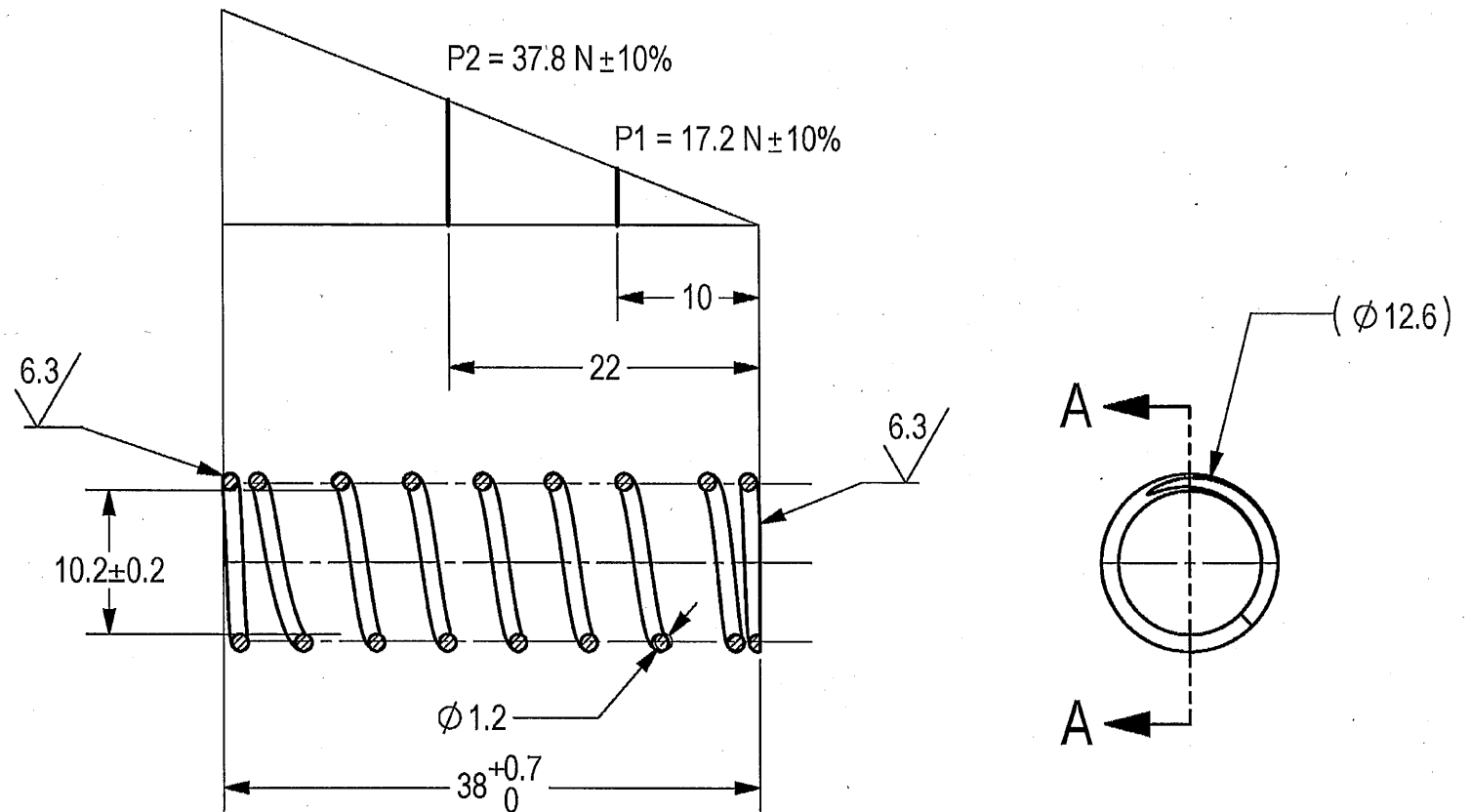
SHEET REV RECORD	
ALL SHEETS ARE THE SAME REVISION	

REVISION RECORD				
REV	ECO	DESCRIPTION	DATE	APVD
01		Freeze	02-Oct-12	
02		Restricted	29-Dec-13	
--	T00064	Identical To Previous Released	09-Apr-18	L. Goldshtein

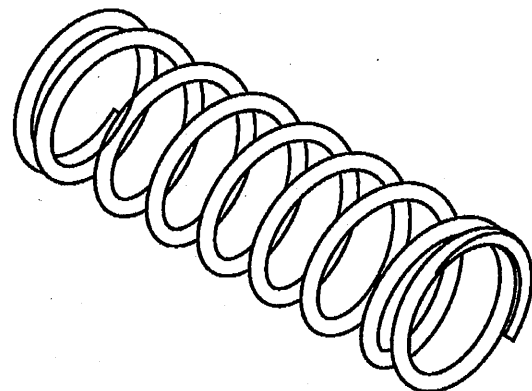
NOTES:

1. INTERPRET THIS DRAWING IAW ASME Y14.100M.
2. MATERIAL: STAINLESS STEEL WIRE COMPOSITION 302 AUSTENITIC ASTM A313. (EQUIVALENT STEEL IS PERMITTED AFTER ELBIT APPROVAL).
3. QUALITY ASSURANCE PROVISIONS:  
3.1 QUALITY ASSURANCE PROVISIONS FOR THIS ITEM PER RDMQD00012P.
4. PARENTHETICAL FIGURES ARE FOR REFERENCE ONLY.
5. PACKAGING AND PACKING:  
THE FINISHED PART SHALL BE PRESERVED AND PACKAGED IN ACCORDANCE WITH COMMERCIAL PRACTICE.
6. IDENTIFY PER MIL-STD-130 PARA 4.1.B, BY LABELING ITS CONTAINER WITH THE PART NUMBER. CHARACTERS MINIMUM TEXT HEIGHT 1.25 MM.

- DIRECTION OF HELIX - OPTIONAL
- NUMBER OF ACTIVE COILS = 7
- TOTAL NUMBER OF COILS = 9
- CLOSED ENDS AND GROUND
- STRESS RELIEF: BAKE FOR 30 MIN. AT 430 °C ± 25 °C AFTER FORMING.



SECTION A-A  
SCALE 2:1



(WEIGHT APPROX.: 0.002 Kg.)

SEE ATTACHED MEDIA

UNLESS OTHERWISE SPECIFIED		SIGNATURE	DATE	ORDNANCE FACTORY TIRUCHIRAPPALLI	
DIMENSIONS ARE IN MM PER ASME Y14.5M - 1994		DRAWN	21/12/2012	FOR: COVER BLIND, POD, FINISHED	
TOLERANCES		CHECKED		OF: 12.7MM SRCG	
LINEAR	ANGULAR	HOS/DDO	21/12/2012	TITLE SPRING RELEASE 1	
±0.2	±0.5°	OFFICER/PRODN		SIZE	CAGE CODE
1st. ANGLE PROJECTION		OFFICER/QC		B	2291A
SURFACE TEXTURE IN Micro M		OFFICER/DDO	21/12/2012	DWG NO	066230A-00
PROJECT OFFICER				SCALE 2:1	AUTOMATED DRAWING (SW)
PLM Control				SHEET 1 OF 1	

PLM Control

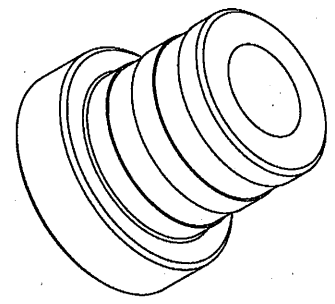
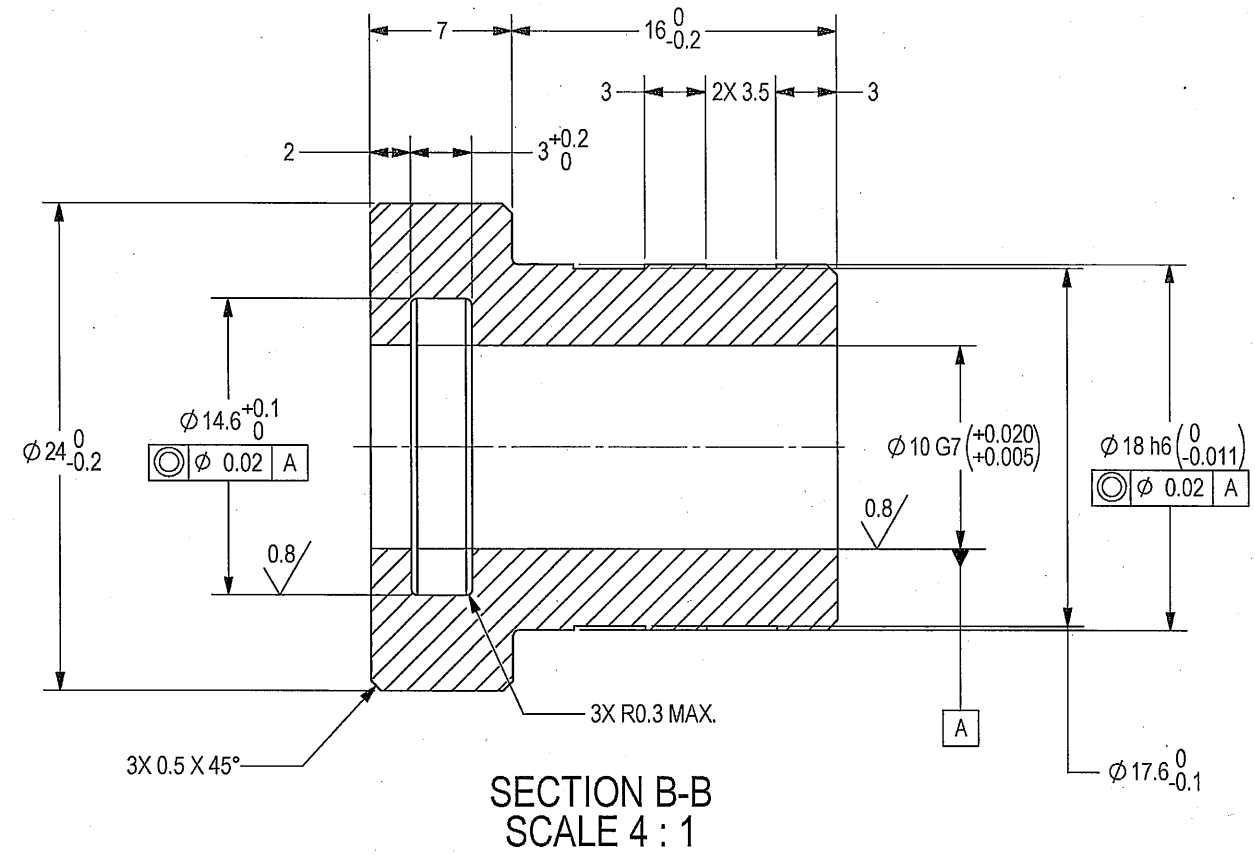
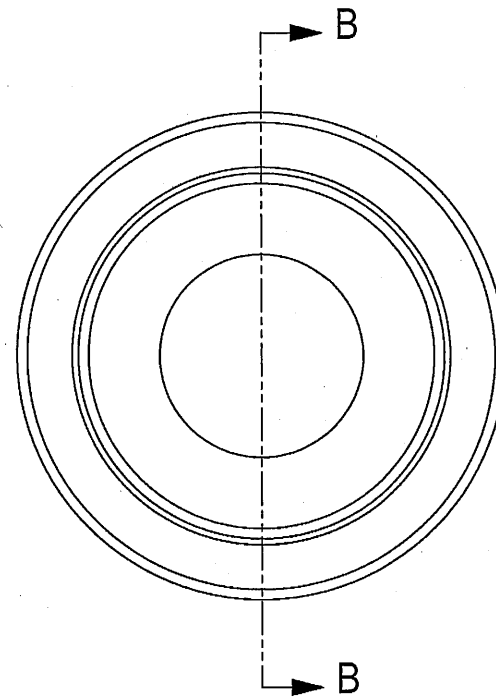
THIS DOCUMENT AND THE INFORMATION CONTAINED IN IT ARE PROPRIETARY AND CONFIDENTIAL TO OFT. NO PERSON OR ENTITY IS ALLOWED TO COPY, REPRINT, REPRODUCE OR PUBLISH ANY PART OF THIS DOCUMENT, NOR DISCLOSE ITS CONTENTS TO OTHERS, NOR MAKE ANY USE OF IT, NOR ALLOW OR ASSIST OTHERS TO MAKE ANY USE OF IT UNLESS BY THE PRIOR WRITTEN EXPRESS AUTHORIZATION OF OFT AND THEN ONLY TO THE EXTENT AUTHORIZED. COPYRIGHT-OFT.

SHEET REV STATUS  
ALL SHEETS ARE THE SAME REVISION

REVISION RECORD				
REV	ECO	DESCRIPTION	DATE	APVD
01		Freeze	14-Sep-17	E. Reshef
--	T00078	Identical To Previous Released	09-May-18	E. Itzcovich

NOTES:

- INTERPRET THIS DRAWING IAW ASME Y14.100M.
- MATERIAL: COPPER ALLOY BAR 360 H02 PER ASTM-B-16 (EQUIVALENT ALUMINUM IS PERMITTED AFTER ELBIT APPROVAL).
- GENERAL TOLERANCES ACCORDING TO ISO 2768-m.
- DEBURR AND REMOVE SHARP EDGES APPROX. 0.3X45°.
- QUALITY ASSURANCE PROVISIONS:  
5.1 QUALITY ASSURANCE PROVISIONS FOR THIS ITEM PER RDMQD00012P.
- PACKAGING AND PACKING:  
THE FINISHED PART SHALL BE PRESERVED AND PACKAGED IN ACCORDANCE WITH MANUFACTURER'S COMMERCIAL PRACTICE.
- IDENTIFY PER MIL-STD-130 PARA 4.1.B, BY LABELING ITS CONTAINER WITH THE PART NUMBER. CHARACTERS 1.25 MM HIGH.



(WEIGHT APPROX.: 0.04 kg)

1.6 / 0.8  
(V)

SEE ATTACHED MEDIA

UNLESS OTHERWISE SPECIFIED		SIGNATURE	DATE	ORDNANCE FACTORY TIRUCHIRAPPALLI	
DIMENSIONS ARE IN MM PER ASME Y14.5 - 2009		DRAWN	2/1/17	FOR: RELEASE CAM ASSY	
TOLERANCES		CHECKED		TITLE BUSHING, LOCKING MACHANISM	
LINEAR	ANGULAR	H05/DDO		OF: 12.7MM SRCG	
SEE NOTE 3.	SEE NOTE 3.	OFFICER/PRODN		SIZE	CAGE CODE
1st ANGLE PROJECTION		OFFICER/OC		C	2291A
		OFFICER/DDO		DWG NO	Y18753A-00
SURFACE TEXTURE IN MicroMeter				SCALE	5:1
				AUTOMATED DRAWING (SW)	
				SHEET	1 OF 1
				PLM Control	
				PLM PROJECT	Y18753A-00
				STATUS	Freeze

DWG NO Y18753A-00  
SH 1

2

DWG NO 064734A-01

SH 1

1

THIS DOCUMENT AND THE INFORMATION CONTAINED IN IT ARE PROPRIETARY AND CONFIDENTIAL TO OFT. NO PERSON OR ENTITY IS ALLOWED TO COPY, REPRINT, REPRODUCE OR PUBLISH ANY PART OF THIS DOCUMENT, NOR DISCLOSE ITS CONTENTS TO OTHERS, NOR MAKE ANY USE OF IT, NOR ALLOW OR ASSIST OTHERS TO MAKE ANY USE OF IT UNLESS BY THE PRIOR WRITTEN EXPRESS AUTHORIZATION OF OFT AND THEN ONLY TO THE EXTENT AUTHORIZED. COPYRIGHT-OFT.

SHEET REV RECORD

ALL SHEETS ARE THE SAME REVISION

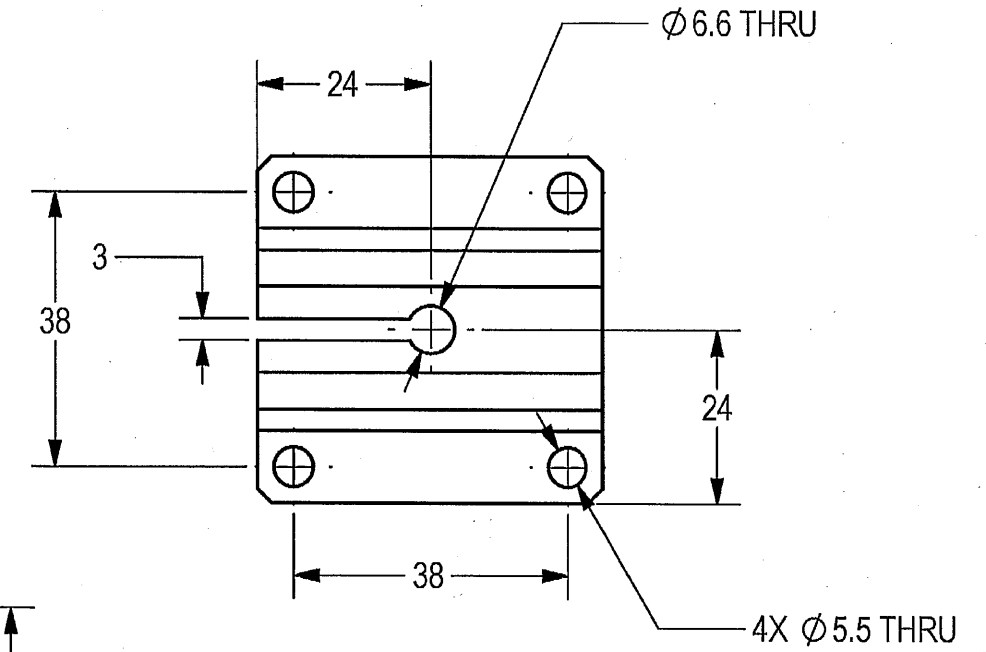
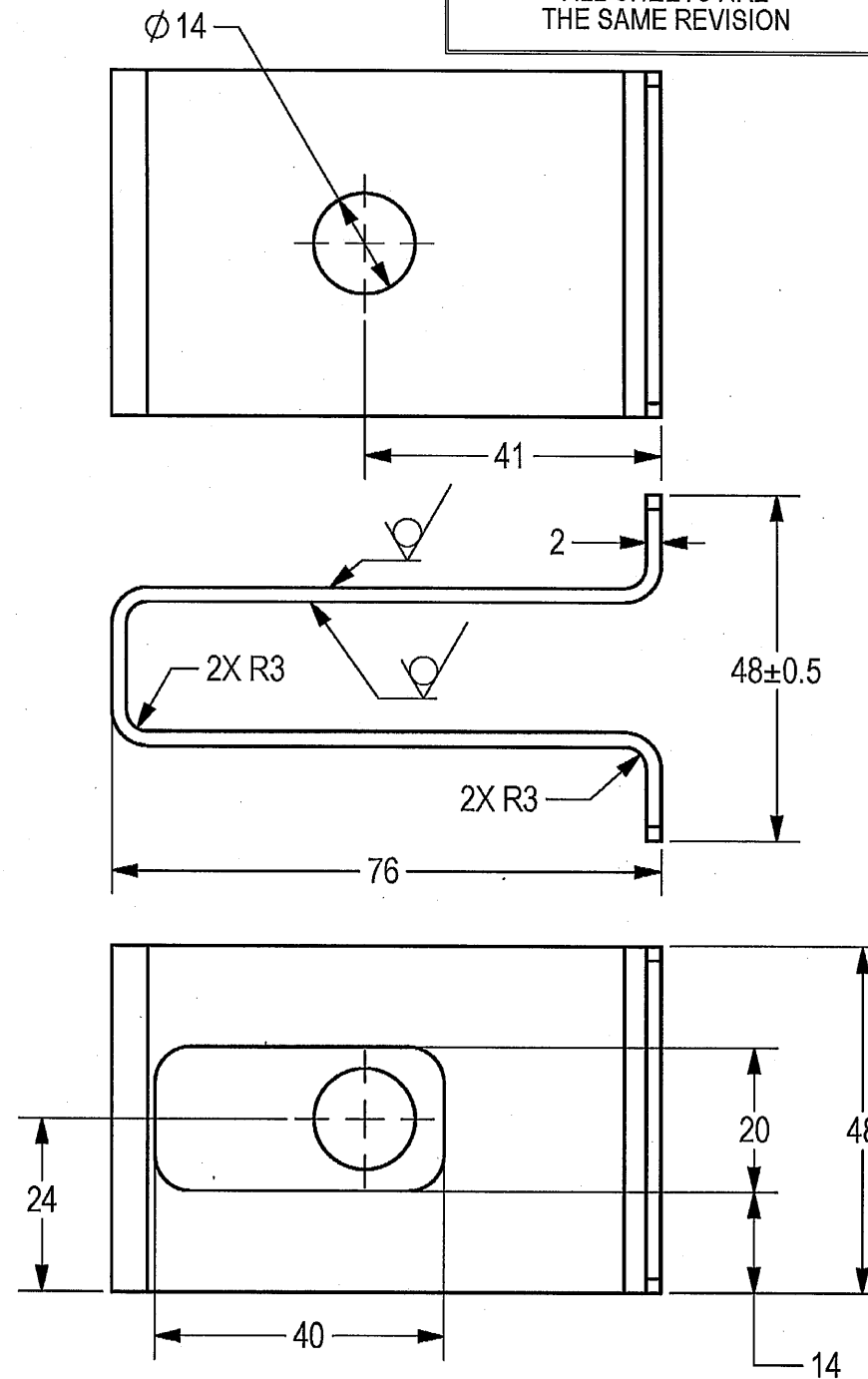
REVISION RECORD

REV	ECO	DESCRIPTION	DATE	APVD
01	VY06/00	Restricted	28-May-14	D. Nave
--	T00064	Identical To Previous Released	09-Apr-18	L. Goldshtein

NOTES:

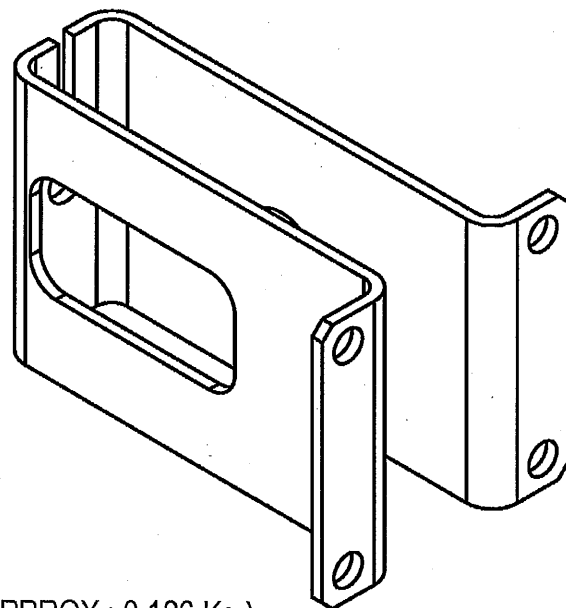
1. INTERPRET THIS DRAWING IAW ASME Y14.100M.
2. MATERIAL: CARBON STEEL PLATE SAE 1020 PER ASTM A 827. (EQUIVALENT STEEL IS PERMITTED AFTER ELBIT APPROVAL).
3. DEBURR AND REMOVE SHARP EDGES APPROX. 0.3X45°.
4. ZINC COATING ELECTRODEPOSITED TYPE II CLASS 2 (OR SC3) 13 MICRON THICK PER ASTM B 633.
5. QUALITY ASSURANCE PROVISIONS:  
5.1 QUALITY ASSURANCE PROVISIONS FOR THIS ITEM PER RDMQD00012P.
6. PACKAGING AND PACKING:  
THE FINISHED PART SHALL BE PRESERVED AND PACKAGED IN ACCORDANCE WITH COMMERCIAL PRACTICE.
7. IDENTIFY PER MIL-STD-130 PARA 4.1.B, BY LABELING ITS CONTAINER WITH THE PART NUMBER. CHARACTERS MINIMUM TEXT HEIGHT 1.25 MM.

B



B

A



(WEIGHT APPROX.: 0.126 Kg.)

2

SEE ATTACHED MEDIA

A

UNLESS OTHERWISE SPECIFIED		SIGNATURE	DATE	<b>ORDNANCE FACTORY</b> TIRUCHIRAPPALLI	
DIMENSIONS ARE IN MM PER ASME Y14.5M-1994		DRAWN	21/12/20		
TOLERANCES		CHECKED		TITLE	
LINEAR	ANGULAR	HOS/DDO	21/12/20	FOR: RELEASE CAM ASSY	
±0.2	±0.5°	OFFICER/PRODN		OF: 12.7MM SRCG	
1st ANGLE PROJECTION		OFFICER/QC		SIZE	CAGE CODE
		OFFICER/DDO	21/12/20	B	2291A
SURFACE TEXTURE IN Micro M				DWG NO	064734A-01
				SCALE	1:1
<p>PROJECT OFFICER</p>		PLM Control		AUTOMATED DRAWING (SW)	SHEET 1 OF 1



ORDNANCE FACTORY TIRUCHIRAPPALLI

TITLE  
**BRACKET RELEASE**

SIZE CAGE CODE DWG NO  
**B 2291A 064734A-01**

SCALE 1:1 AUTOMATED DRAWING (SW) SHEET 1 OF 1

1