

4

3

2

1

THIS DOCUMENT AND THE INFORMATION CONTAINED IN IT ARE PROPRIETARY AND CONFIDENTIAL TO OFT. NO PERSON OR ENTITY IS ALLOWED TO COPY, REPRINT, REPRODUCE OR PUBLISH ANY PART OF THIS DOCUMENT, NOR DISCLOSE ITS CONTENTS TO OTHERS, NOR MAKE ANY USE OF IT, NOR ALLOW OR ASSIST OTHERS TO MAKE ANY USE OF IT UNLESS BY THE PRIOR WRITTEN EXPRESS AUTHORIZATION OF OFT AND THEN ONLY TO THE EXTENT AUTHORIZED. COPYRIGHT-OFT.

Designation	Description	Permissible deviations for basic size range							
		0.5 UP TO 3	over 3 UP TO 6	over 6 UP TO 30	over 30 UP TO 120	over 120 UP TO 400	over 400 UP TO 1000	over 1000 UP TO 2000	over 2000 UP TO 4000
f	fine	±0.05	±0.05	±0.1	±0.15	±0.2	±0.3	±0.5	—
m	medium	±0.1	±0.1	±0.2	±0.3	±0.5	±0.8	±1.2	±2
c	coarse	±0.2	±0.3	±0.5	±0.8	±1.2	±2	±3	±4
v	very coarse	—	±0.5	±1	±1.5	±2.5	±4	±6	±8

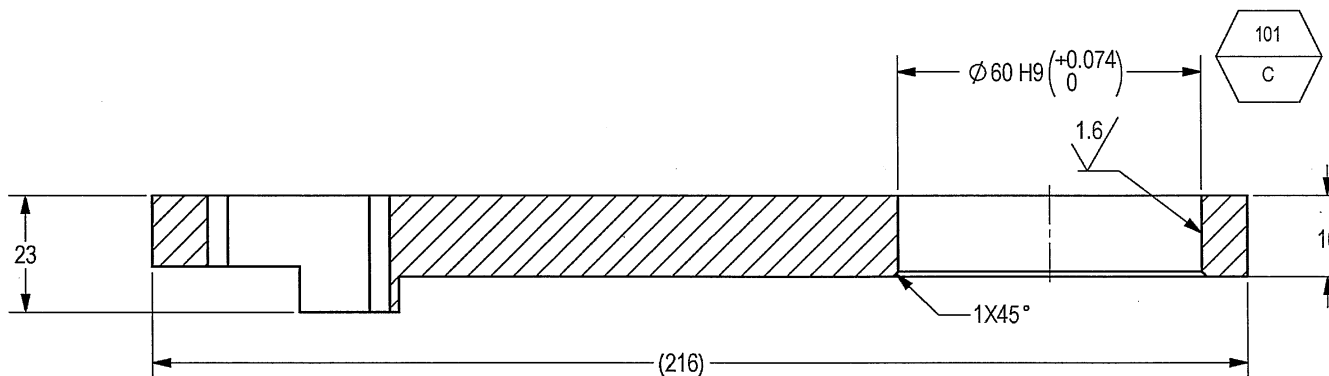
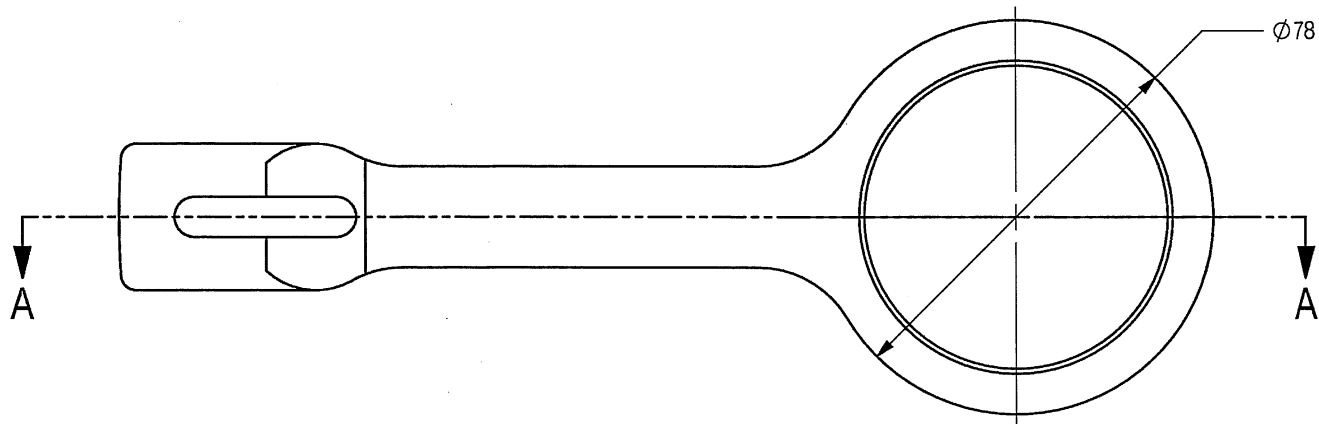
For nominal sizes below 0.5 mm, the deviations shall be indicated adjacent to the relevant size(s)

SHEET REV STATUS  
ALL SHEETS ARE THE SAME REVISION

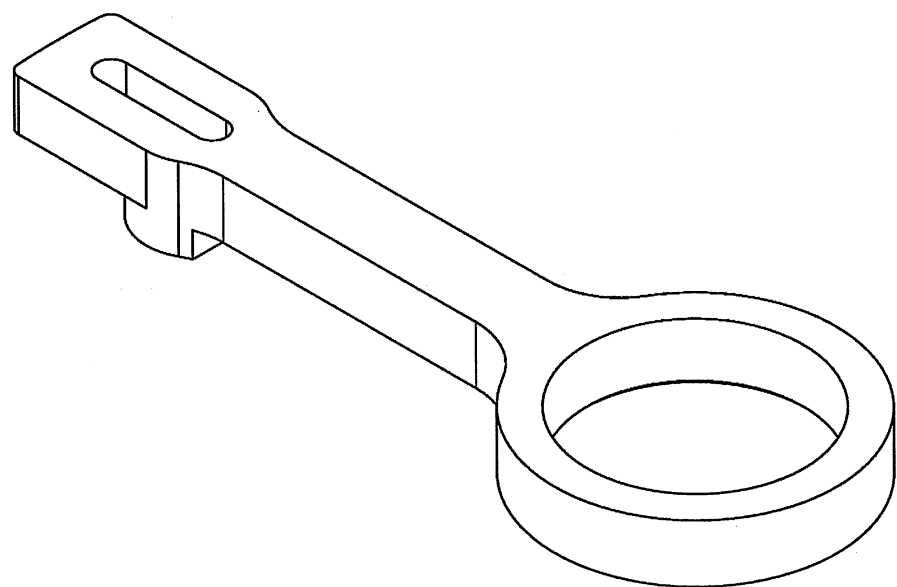
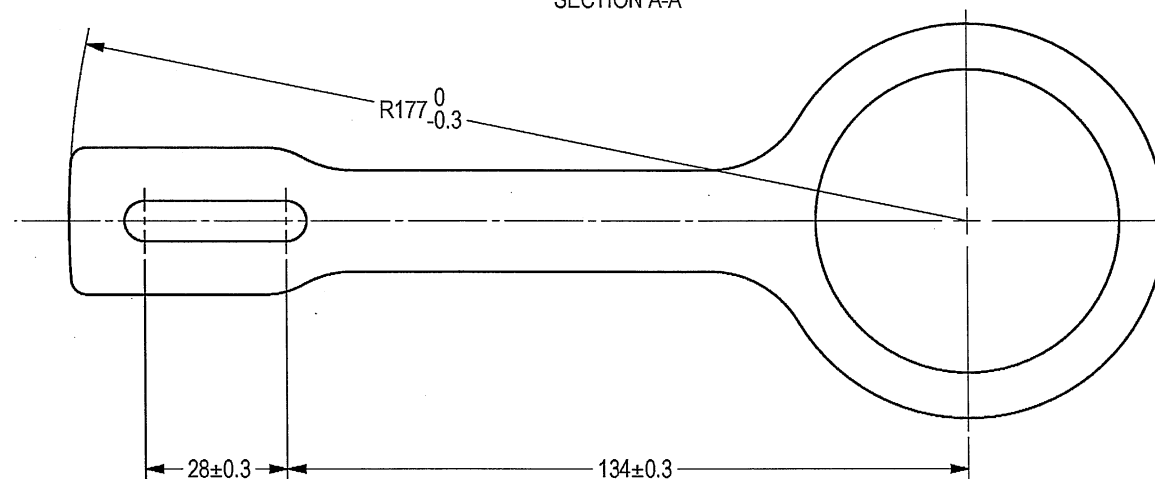
REVISION RECORD				
REV	ECO	DESCRIPTION	DATE	APVD
01		Freeze	14-Jun-12	
02		Restricted	30-Oct-13	
—	T00120	Identical To Previous Released	20-Sep-18	L. Goldshtein

NOTES :

- INTERPRET THIS DRAWING IAW ASME Y14.100M.
- MATERIAL: ALUMINUM ALLOY PLATE 6061-T6 PER QQ-A-250/11 OR T651. (EQUIVALENT ALUMINUM IS PERMITTED AFTER ELBIT APPROVAL).
- DEBURR AND REMOVE SHARP EDGES APPROX. 0.3X45°.
- GENERAL TOLERANCES ACCORDING TO ISO 2768-m.
- FINISH:
  - CHROMATIC CONVERSION COATING PER MIL-DTL-5541 F TYPE II, CLASS 3.
- QUALITY ASSURANCE PROVISIONS:
  - QUALITY ASSURANCE PROVISIONS FOR THIS ITEM PER RDMQD00012P.
  - MAJOR CHARACTERISTICS NRS 101.
- PACKAGING AND PACKING: THE FINISHED PART SHALL BE PRESERVED AND PACKAGED IN ACCORDANCE WITH COMMERCIAL PRACTICE.
- IDENTIFY PER MIL-STD-130 PARA 4.1.B, BY LABELING ITS CONTAINER WITH THE PART NUMBER. CHARACTERS MINIMUM TEXT HEIGHT 1.25 MM.



SECTION A-A



(WEIGHT APPROX.: 0.215 Kg.)

UNLESS OTHERWISE SPECIFIED

DIMENSIONS ARE IN MM PER ASME Y14.5M - 1994

TOLERANCES  
LINEAR SEE NOTE 4    ANGULAR SEE NOTE 4

1st ANGLE PROJECTION

SURFACE TEXTURE IN Micro INCH

SIGNATURE: *[Signature]* DATE: 11/9/12

DRAWN: *[Signature]* CHECKED: *[Signature]* HOS/DDO: *[Signature]* OFFICER/PRODN: *[Signature]* OFFICER/QC: *[Signature]* OFFICER/DDO: *[Signature]*

ORDNANCE FACTORY TIRUCHIRAPPALLI

TITLE: BUMPER ARM

FOR: TRAVERSE ASSY OF: 12.7MM SRCG

SIZE: C    CAGE CODE: 2291A    DWG NO: 062358A-00

SCALE: 1:1    AUTOMATED DRAWING (SW)    SHEET 1 OF 1

DWG NO 062358A-00

SH 1

SEE ATTACHED MEDIA