

3.2 / (V)

DIMS. (23) (25) (24) ARE NOT CONSIDERED FOR CNC OPERATION AND GIVEN FOR INSPECTION ONLY

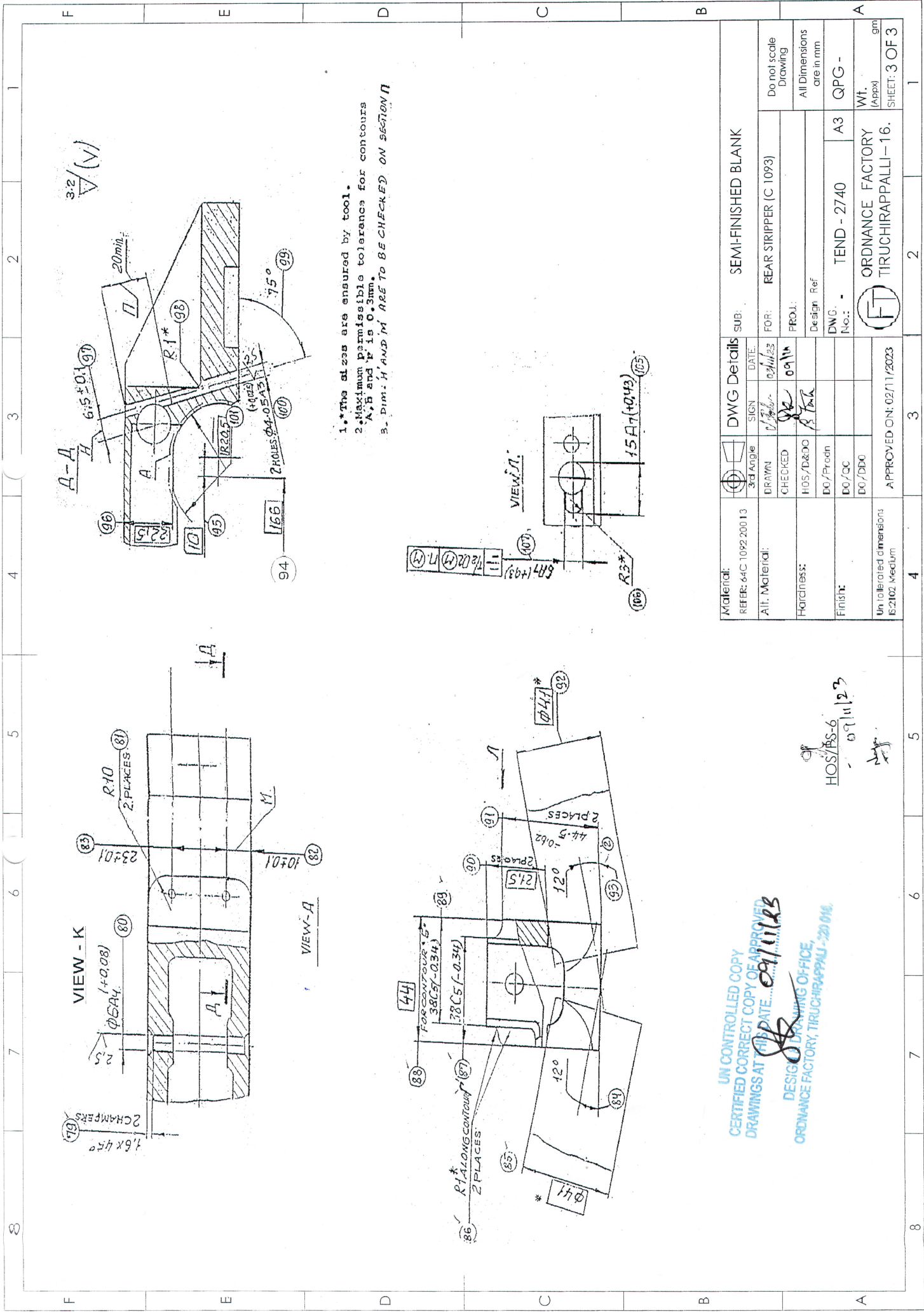
UN CONTROLLED COPY
 CERTIFIED CORRECT COPY OF APPROVED
 DRAWINGS AT THIS DATE: 09/11/23
 DESIGN & DRAWING OFFICE,
 ORDNANCE FACTORY, TIRUCHIRAPPALI - 620 016.

HOS/105-6
 09/11/23
 [Signature]

Material: REFER: 64C 1092 200 13	DWG Details	SUB:	SEMI-FINISHED BLANK
Alt. Material:	3rd Angle	SIGN	DATE
Hardness:	CHECKED	[Signature]	09/11/23
Finish:	H05/D&D	[Signature]	09/11/23
Un tolerated dimensions E:2102 Medium	DO/Prodn	Design Ref	
	DO/QC	DWG. No.:	TEND - 2740
	DO/DDC		A3
	APPROVED ON: 02/11/2023		QPG -
			WT. (Appx)
			SHEET: 2 OF 3

ORDNANCE FACTORY
 TIRUCHIRAPPALI-16.





1. *The sizes are ensured by tool.
2. Maximum permissible tolerance for contours A, B and P is 0.3mm.
3. DIM: H AND M ARE TO BE CHECKED ON SECTION N

UN CONTROLLED COPY
 CERTIFIED CORRECT COPY OF APPROVED
 DRAWINGS AT THIS DATE... 09/11/23
 DESIGN DRAWING OFFICE,
 ORDNANCE FACTORY, TIRUCHIRAPPALI - 201 016.

HOS/PS-6
 09/11/23

Material: REFER: 64C 1092 20013	DWG Details 3rd Angle	SUB: SEMI-FINISHED BLANK	
		SIGN	DATE
All. Material:	DRAWN	FOR: REAR STRIPPER (C 1093)	Do not scale Drawing
Hardness:	CHECKED	PROJ:	All Dimensions are in mm
Finish:	H105/D&DO	Design Ref	DWG. No.:
	D0/Proth		TEND - 2740
	D0/OC		A3
Un tolerated dimensions E2102 Medium	D0/DDO		QPG -
	APPROVED ON: 02/11/2023		WT. (Appx) gm
		ORDNANCE FACTORY TIRUCHIRAPPALI - 16.	
		SHEET: 3 OF 3	