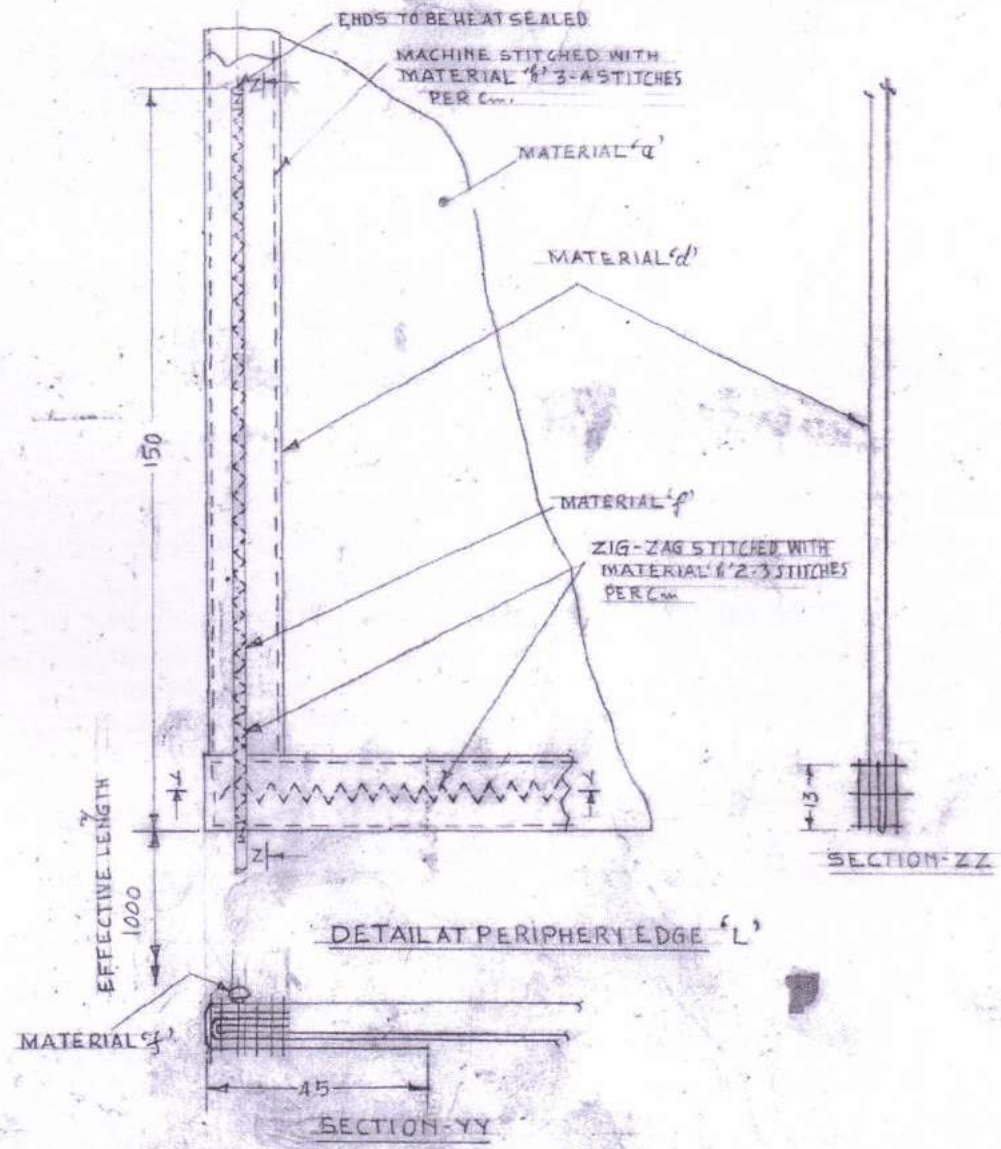


5 A 3 2 1

DRG No. (2) (B) (D)
 ADDRDE/1201/A-1
 SHEET 3 OF 12

DRG CONVENTION CONFORM TO AIN/AIAA-017-1091
 GEN. TOL: LESS THAN 50 mm ± 2 mm, 51 mm UPTO 250 mm ± 3 mm, 251 mm UPTO 750 mm ± 6 mm, 751 mm UPTO 1500 mm ± 10 mm



R No	DATE	AUTHORITY	BRIEF RECORD	ZONE	O/C DRD	PGD DRD

DRG O/C *Bl* PRO OFFER *CV*
 TRD COMP PASSED

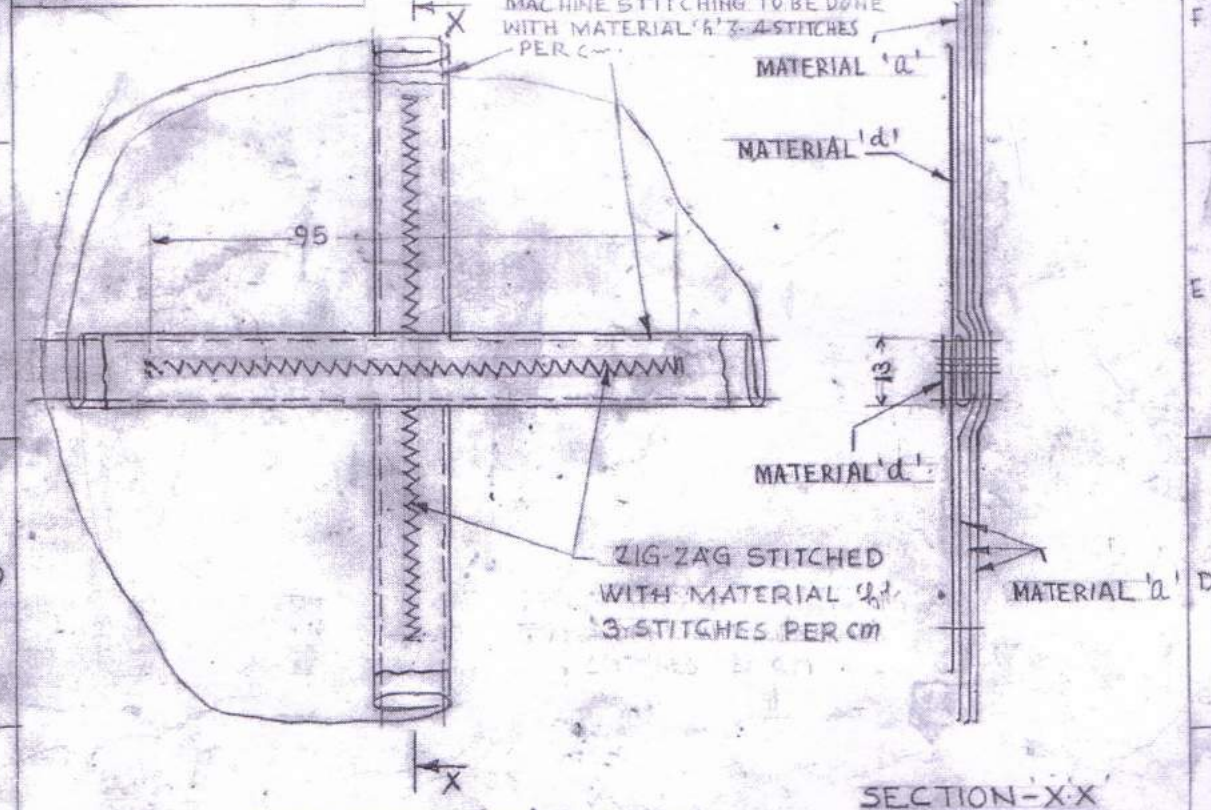
 SCALE: -1:1
 DIMENSIONS IN mm

APPROVED *skh* DH
 PROG. DIRECTOR (QA)

PARACHUTE SYSTEM FOR 105 mm
 IFG ILLUMINATING SHELL MK-II

DESIGN AUTHORITY
 ADDRDE, AGRA
 DRG No.
 ADDRDE/1201/A-1 (2) (B) (D)
 SHEET 3 OF 12

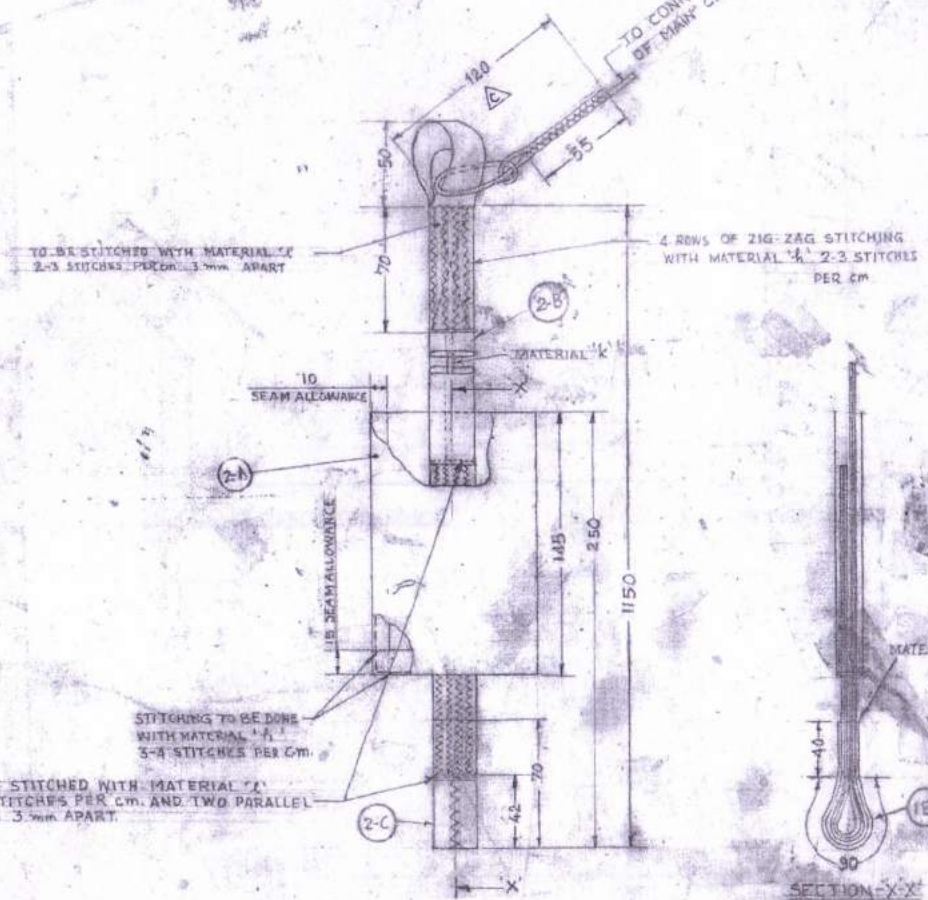
SHEET 5 OF 12
 DRG No. (e) ADRDE/1201/A-1
 GEN. TOL: - LESS THAN UPTO 50mm ± 2mm
 51mm UPTO 250mm ± 3mm



ENLARGED 'N' (2 OF 12)
 (SHOWING DETAIL AT CORNER JOINT)

R.No	DATE	AUTHORITY	BRIEF RECORD		ZONE	O/C DRD	PGD DRD
			DRN <i>K8m</i>	CHD <i>SKH</i>	DRG O/C <i>SK</i>	PRO-OFF <i>W</i>	
			TRD	COMP	APPROVED <i>SK</i>		
					DH		
			SCALE - 1:1		PASSED		
			DIMENSION IN mm		<i>SK</i> PROG. DIRECTOR (QA)		
PARACHUTE SYSTEM FOR 105mm IFG ILLUMINATING SHELL MK-II					DESIGN AUTHORITY ADRDE - AGRA		
					DRG. No.		
					ADRDE/1201/A-1 (a)(b)(c)(d)(e)(f)		
					SHEET 5 OF 12		

DRG CONVENTION CONFORM TO ARS/AMA-07-189
 DTL N TOL: LESS THAN 0.25 - 0.12, 0.15 - 0.125, 0.15 - 0.125, 0.15 - 0.125
 2.51 - 0.125, 0.125 - 0.125, 0.125 - 0.125, 0.125 - 0.125
 DRG No. 12
 SHEET 6 OF 12
 ADRDE/1201/A/1/SA-10



QTY	DESCRIPTION	REF
1	THREAD SEWING NYLON EXTRA HEAVY UDIOG VARIETY H-2 (B.S. 106 M)	15-4229-1992
3	FIBRE GLASS SLEEVE (5mm TO 6mm BORE SIZE)	P-610/11L6/FGS
3	FIBRE GLASS TAPE WIDTH 60 mm	ADRDE/SPLCH/006/01
6	THREAD SEWING NYLON L-2 VARIETY 350 UD/06	15-4229-1992
7	CORDAGE NYLON BRAIDED 250M	3SS-4020-0
6	TAPE TUBULAR NYLON 26 mm W/D	ADRDE/SPLCH/006/01
C	CANVAS NYLON 220 mm 105	IND/AVE/006/01 (L)
NOMENCLATURE		DTL REF. SPECN / DRG NO.

LIST OF MATERIALS

2-C	9	LOOP COVERING SLEEVE	1
2-B	8	CONNECTING STRAP	1
2-A	7	DEVELOPMENT OF SLEEVE	1
2	6	SUB ASSEMBLY	-
DETAIL SHEET No	No	NOMENCLATURE	No OFF

DETAIL INDEX

CONNECTING STRAP SUB-ASSEMBLY

REV	DATE	AUTHORITY	BRIEF RECORD	ZONE	DRG	DRG	DRN	TRD	CHD	COMP	DWG	PROOF
1	08-12-17	OMS/PG/ADS327	AMENDED AS PER CHANGE SHEET No.	E-23							9/2	CA
C	16-10-96	ADRDE/CAS/AD	DIMENSION 190 INDICATED	E-5							PASSED	DH
F	18-7-96	045/004	MATERIAL 'J' WIDTH CHANGED 50mm TO 40mm SPECN PG / KI / VEG / PCH CHANGED TO ADRDE / SPECN / 1006 / 01	D-3							APPROVED	
H												

SCALE: 1:1
 DIMENSIONS ARE IN mm

DESIGN AUTHORITY: ADRDE/AGSA
 DRG No: (A/S) (01) (01)
 ADRDE/1201/A/1/SA-1 (010)
 SHEET 6 OF 12

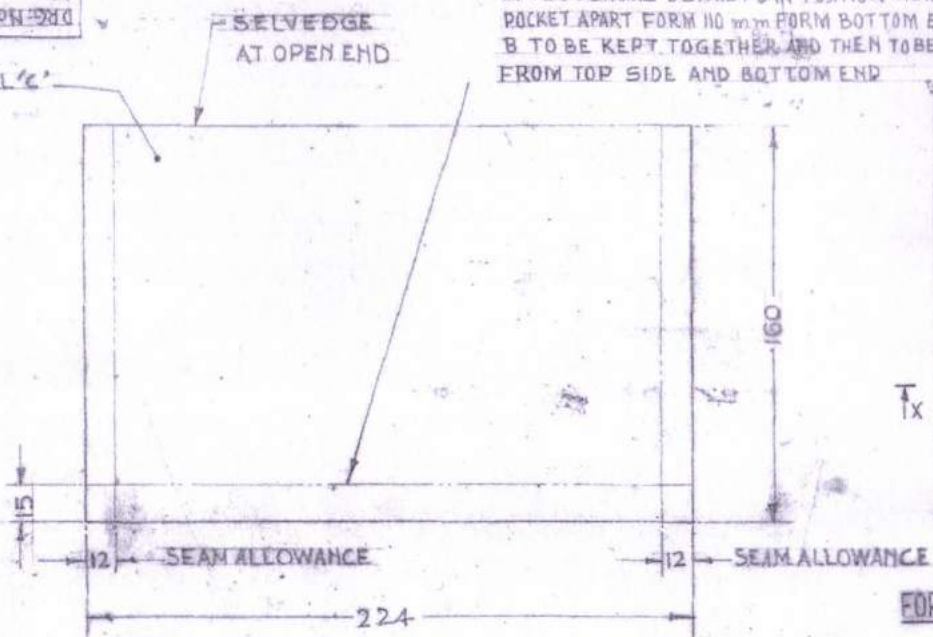
PARACHUTE SYSTEM FOR 105mm IFG ILLUMINATING SHELL MK-II

DRG CONVENTION COMPLIANT TO ISIRI/IRIS-101-93
 DIMENSIONAL TOLERANCES:
 LESS THAN 50 mm ± 2 mm
 51 mm UPTO 250 mm ± 3 mm

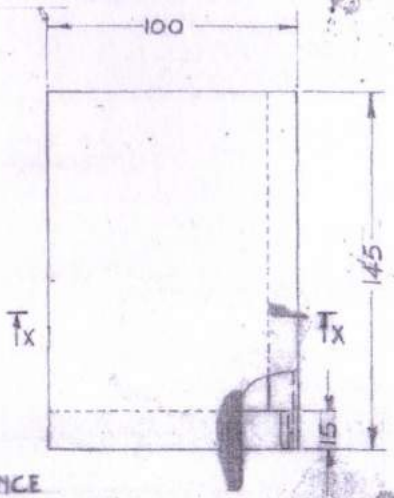
DRG. No. (107)
 ADDRDE/1201/A-1/SA (10)

2-A

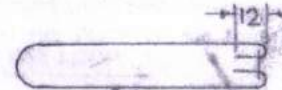
AFTER PLACING DETAIL 1-0 IN POSITION INSIDE OF THE POCKET APART FROM 10 mm FROM BOTTOM END AND SIDE B TO BE KEPT TOGETHER AND THEN TO BE MACHINE STITCHED FROM TOP SIDE AND BOTTOM END



DEVELOPMENT OF POCKET
 1-OFF



FORMATION OF SLEEVE



SECTION-XX

DRN.	CHD.	DRG. 0/2	PROJ OFFR
TRD.	COMR	PASSED	
DRG. No.	DATE	AUTHORITY	BRIEF RECORD
01-98	ADS/SDB	DIMENSION (224) CHANGE OVER	CG
DRD	DRD	ZONE	0/10
SCALE :- 1:2		DIMENSIONS IN mm.	
<p>PARACHUTE SYSTEM FOR 105 mm JFG ILLUMINATING SHELL MK-II</p>			
APPROVED		PROG. DIRECTOR (Q.A.)	
DESIGN AUTHORITY		ADDRDE/AGRA	
DRG. No.		ADDRDE/1201/A-1/SA (10)	
SHEET 7 OF 12			

SHEET 9 OF 12

DRG. CONVENTION CONFORM TO ANSI/AIAA-017-1991

(2-D)

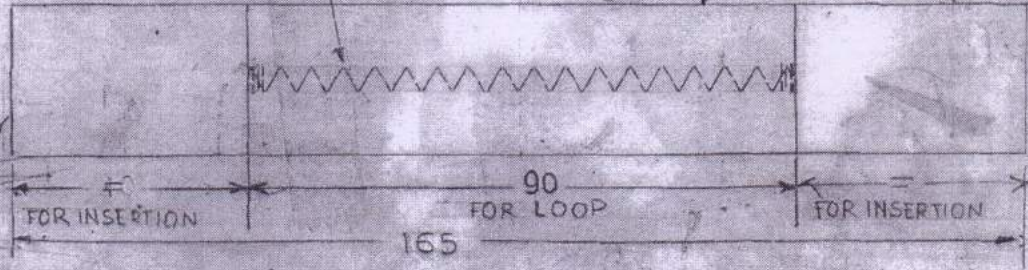
ADRDE/1201/A-1/SA-2

GEN. TOL. - LESS THAN 50 mm UPTO ± 2 mm
51 mm UPTO 250 mm ± 3 mm

DRG No. (a)

THIS PORTION IS TO BE ZIG-ZAG STITCHED WITH MATERIAL 'J' 2-3 STITCHES PER CM PRIOR INSERTING THESE ENDS

MATERIAL 'J'



BOTH THE ENDS TO BE INSERTED THROUGH DETAIL 'D' AFTER THE LOOP FORMATION.

LOOP COVERING SLEEVE

1-OFF

R.No	DATE	AUTHORITY	BRIEF RECORD	ZONE	O/C DRD	P/GD DRD
------	------	-----------	--------------	------	---------	----------

DRN <i>K/8m</i>	CHD <i>dk</i>	DRD <i>O/C 7/2</i>	PRO. OFF <i>CR</i>
TRD	COMP	PASSED	DH
		APPROVED <i>gkh</i>	PROG DIRECTOR(QA)
SCALE - 1:1		DESIGN AUTHORITY	
DIMENSIONS IN mm		ADRDE. AGRA	

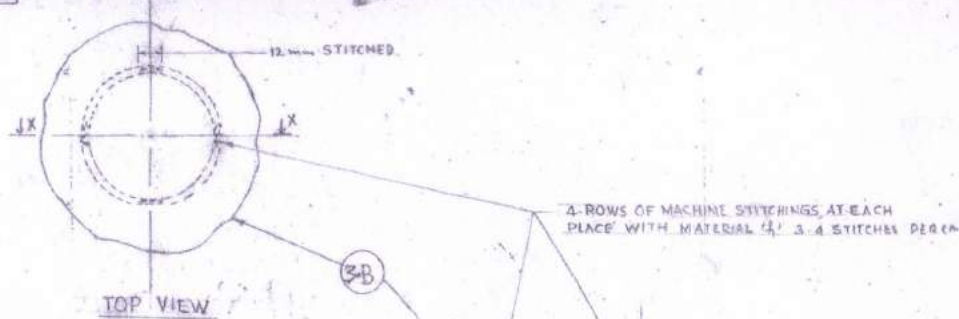
PARACHUTE SYSTEM FOR 105 mm.
IFG ILLUMINATING SHELL MK-II

DRG No. (a)(b)(c)(d)
ADRDE/1201/A-1/SA-2 (a)(b)

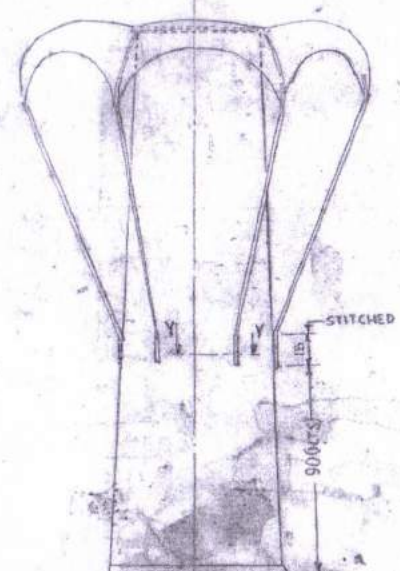
SHEET 9 OF 12

DRD/291/93

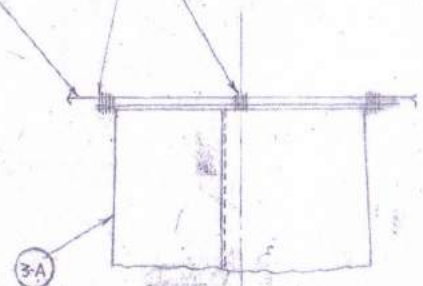
DRG No. 1201/A-1/SA-1
 ADDRESS: 1201/A-1/SA-1
 SHEET NO. OF 12
 DIMENSIONS ARE IN mm UNLESS OTHERWISE STATED
 TOLERANCES: LESS THAN 50 mm: ± 2 mm
 50 mm TO 250 mm: ± 3 mm
 MORE THAN 250 mm: ± 4 mm



2-ROWS OF MACHINE STITCHINGS AT EACH PLACE WITH MATERIAL 4, 3 & 4 STITCHES PER CM



MACHINE STITCHED WITH MATERIAL 4, 3 & 4 STITCHES PER CM



SUB-ASSEMBLY

SRL	NOMENCLATURE	DETAIL REF	SPECN/DRG. No
4	THREAD SEWING NYLON L 2 VARIETY (1.35mm)	Z	IS: 4229-1982
5	CORDAGE NYLON BRAIDED 250kg CORE END (1.0mm) REMOVED AT MANUFACTURING	-	JSS: 4020-8
C	CANVAS NYLON 220 3m O.G.	Z-A	IND/ADE/0065(a)
B	CLOTH COTTON CLOSELY WOVEN 170g/m STITCHING	Z-B	JSS-8305-5

LIST OF MATERIALS

DETAIL No.	SHEET No.	NOMENCLATURE	NO. OF
3-B	12	DROGUE, CROWN	1
3-A	11	DROGUE, SLEEVE	1
3	10	SUB ASSEMBLY	1

DETAIL INDEX

DRG. CONC.	CHD. APP.	DRG. D/C	PRO. OFFICIAL
T/D	COMP.	PASSED	
APPROVED			
SCALE: 1:2 & 1:1		PROG. DIRECTOR	
DIMENSIONS IN mm		DESIGN AUTHORITY	

Sl. No.	DATE	AUTHORITY	BRIEF RECORD	ZONE	OH/DRG	PGD/DRG

PARACHUTE SYSTEM FOR 105mm IFG ILLUMINATING SHELL
 (DROGUE)

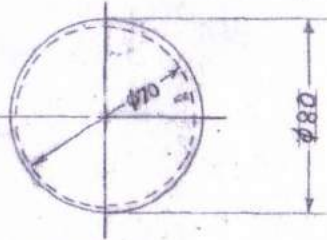
DESIGN AUTHORITY
 ADRE, AGRA
 DRG. No. 1201/A-1/SA-1
 SHEET 10 OF 12

SHEET 11 OF 12

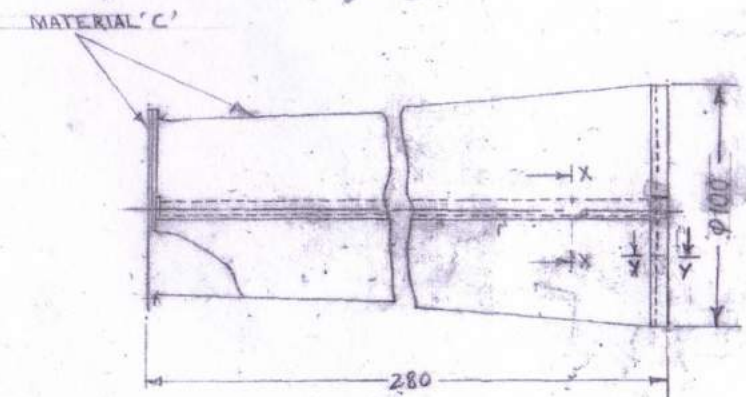
DRG No. (1201/A-1/SA-1(e))

DRG CONVENTIONS CONFORM TO ANSI/AIAA-017-1991
 GEN. TOLI- LESS THAN 50 mm = 1:10
 51 mm UP TO 250 mm = 2:5 mm OR 250 mm UP TO 750 mm = 1:6 mm

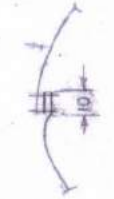
3A



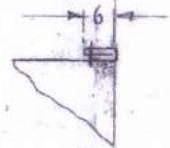
END VIEW



DROGUE SLEEVE
 1:OFF



SECTION-XX



SECTION-YY

NOTE :-

- (i) ENDS OF MATERIAL 'C' TO BE HEAT SEALED.
- (ii) ALL MACHINE STITCHINGS TO BE DONE WITH MATERIAL 'A' 3-4 STITCHES PER CM.

DRG No.	CHD	DRG O/C	PRO OFFER
TRD	COMP	PASSED	
R No	DATE	AUTHORITY	BRIEF RECORD
			ZONE
			O/C
			P&D
			DRG

SCALE: 1:2
 DIMENSIONS IN mm

APPROVED *[Signature]*
 PROG DIRECTOR

DESIGN AUTHORITY
 ADRDE, AGRA

DRG No. (1201/A-1/SA-1(e))
 ADRDE/1201/A-1/SA-1(e)

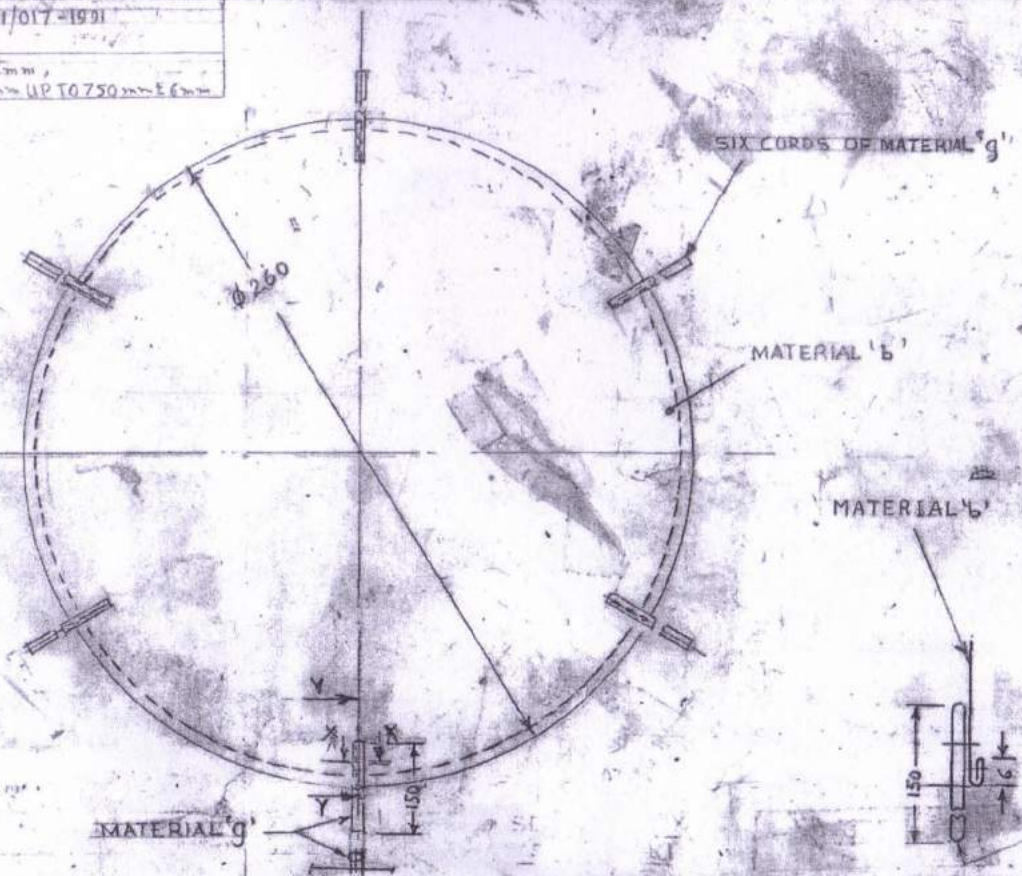
SHEET 11 OF 12

PARACHUTE SYSTEM FOR 105mm IFG ILLUMINATING SHELL
 (DROGUE)

DRG NO. (2)(C)(D)
 ADDRDE/1201/A-1/SA-3(10)
 SHEET 12 OF 12

DRG CONVENTION CONFORM TO AHY/017-1991
 GEN. TOL. :- LESS THAN 50 mm ± 12 mm,
 51 mm UP TO 250 mm ± 3 mm, 251 mm UP TO 750 mm ± 6 mm

3-B



NOTE:-
 ALL MACHINE STITCHING TO BE DONE
 WITH MATERIAL 'h' 3-4 STITCHES PER CM

SECTION XX DROGUE CROWN
 SCALE 2:1

SECTION-YY
 SCALE 1:1

							DRN	CHD	DRG O/C	PRO OFF
							DRD	COMP	PASSED	
										DH
							SCALE: 1:2, 1:1		APPROVED	
							DIMENSIONS ARE IN MM		PROG DIRECTOR	
R. No.	DATE	AUTHORITY	BRIEF RECORD	ZONE	OVC DRD	PGD DRD	DESIGN AUTHORITY			
							ADDRDE, AGR			
							DRG No. (2)(C)(D)			
							ADDRDE/1201/A-1/SA-3(10)			
							SHEET- 12 OF 12			

PARACHUTE SYSTEM FOR 105mm IFG ILLUMINATING SHELL
 (DROGUE)