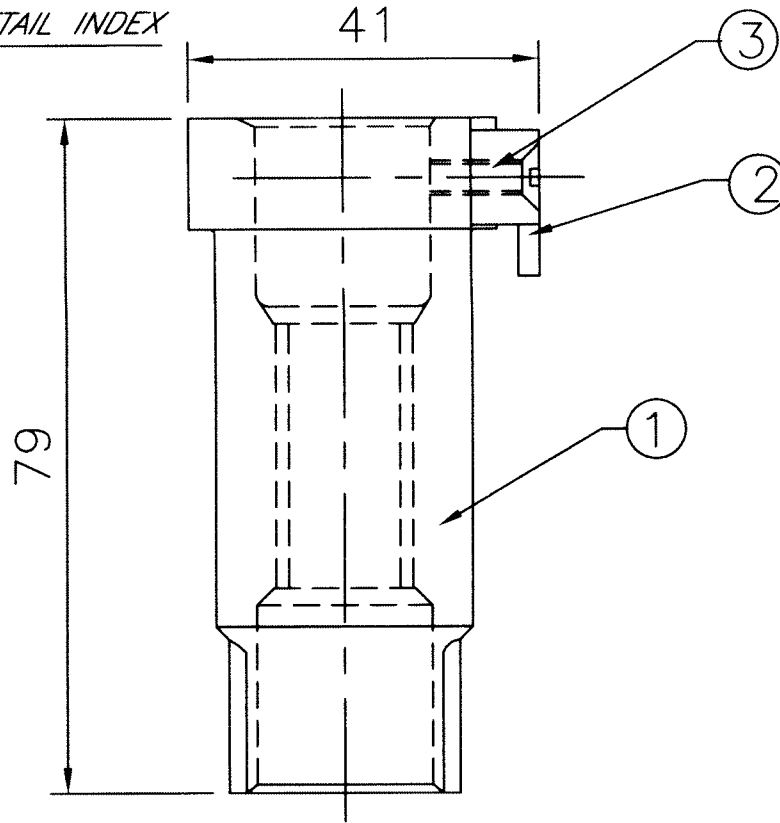


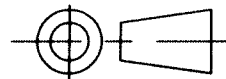
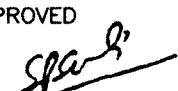
3	IS:1365	CSK SCREW M3x15	1	SHEET 30 OF 38
2	ADRDE 1403 01 02 02	LOCK KEY	31	1
1	ADRDE 1403 01 02 01	COUPLING BODY	30	1
ITEM No.	DRG/SPEC.NO.	NOMENCLATURE	Sheet No.	QTY

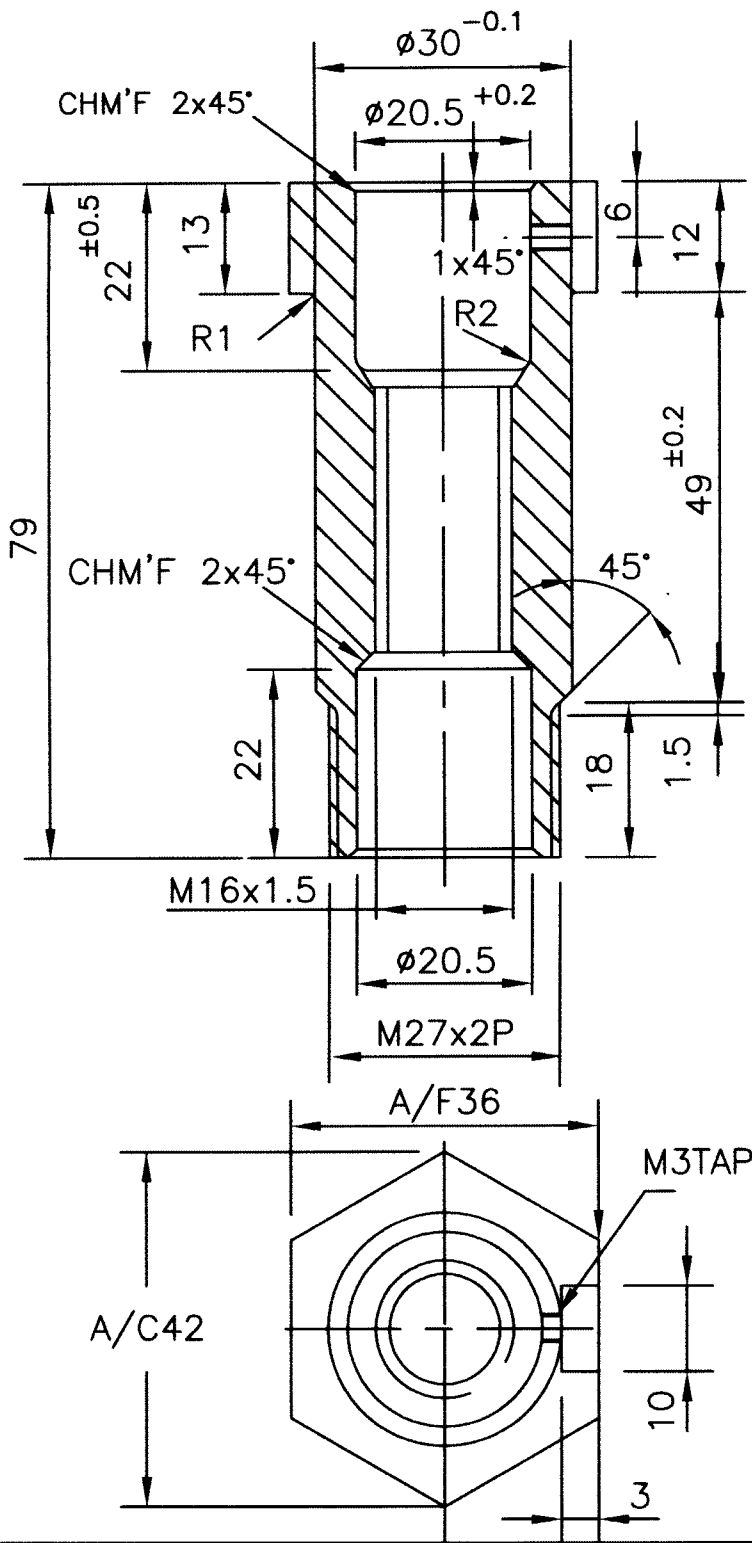
DETAIL INDEX



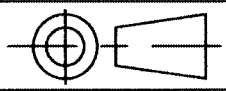
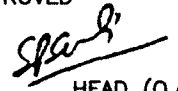
PROOF LOAD TEST :

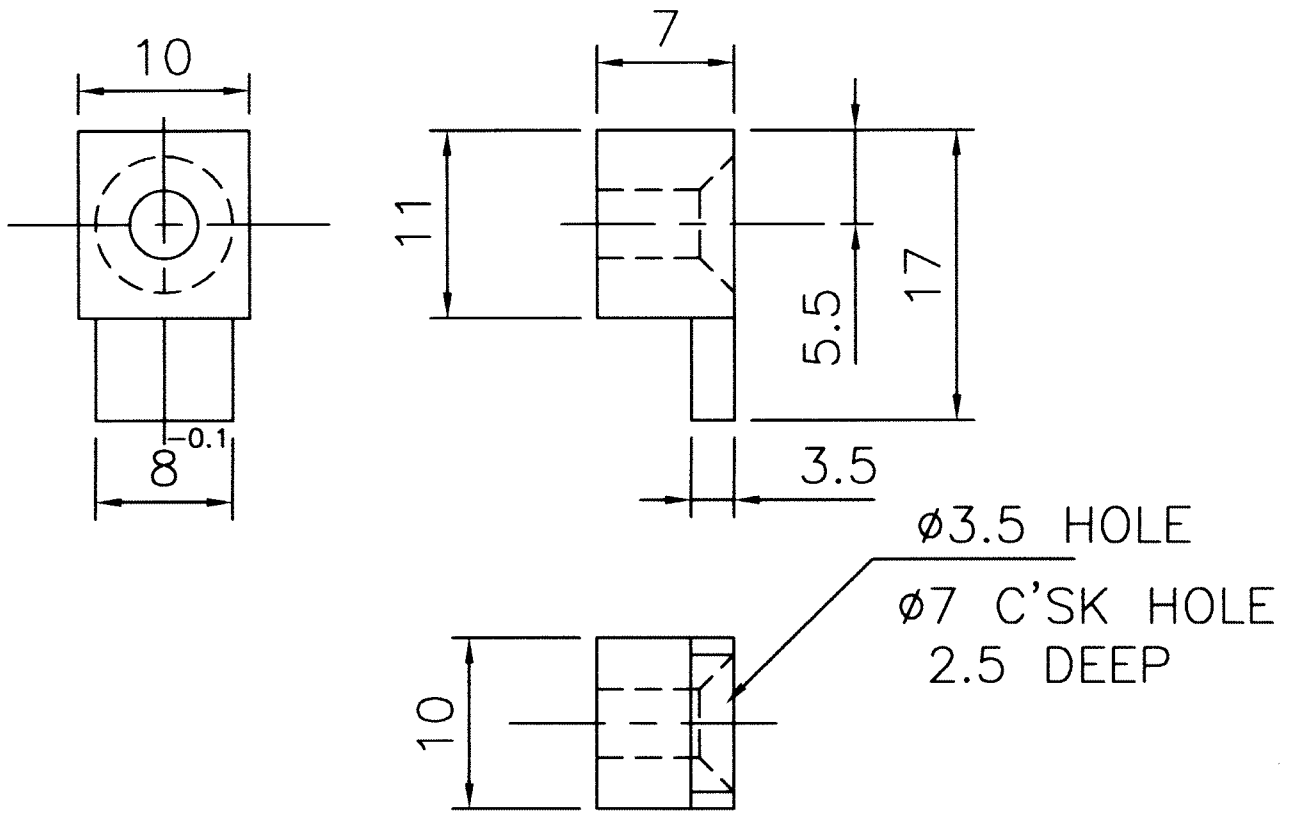
Each coupling shall be tested for proof load test for load 4800kg load as shown in drg. no. ADRDE 1403 01 01 15 01

Ref. No.	DATE	ZONE	AUTHORITY	BRIEF RECORD	OI/C D&S	HEAD QA
DRAWN	DATE	NAME	HDS	MATERIAL:	ADRDE ; AGRA	
CHECKED		SKS		FINISH:		
TRACED		JCD	OI/C JCD PGD	HEAT TREATMENT:		
COMPARED				32 ±5 HRC	APPROVED	
SCALE: NTS				QTY.: 16Nos.	 HEAD (Q.A.)	
ALL DIMENSIONS IN MM			O/IC D&S	DRG.No.		
TOLERANCE: UNLESS OTHERWISE SPECIFIED IS:2102(PART1) :1993 MED.			COUPLING MODULE			ADRDE 1403 01 02 A
HD SYSTEM FOR AN-32 AIRCRAFT						



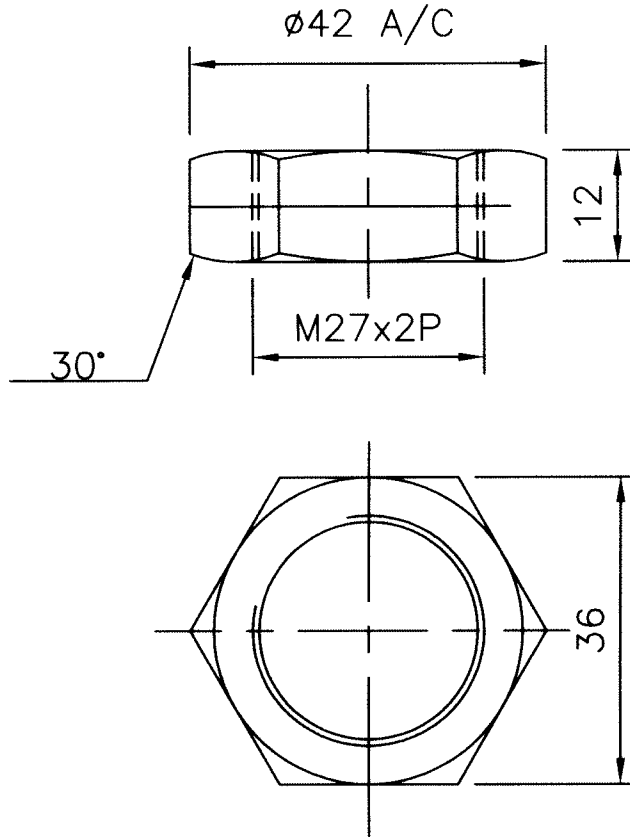
PROCESS : MACHINING

Ref. No.	DATE	ZONE	AUTHORITY	BRIEF RECORD	OI/C D&S	HEAD QA
DRAWN		SKS	HDS	MATERIAL : STEEL ALLOY 070M55, (EN9), AS PER BS:970.	ADRDE ; AGRA	
CHECKED		JCD	JCD	FINISH: AS PER ANNEXURE 'C'		
TRACED			OI/C JCD PGD	HEAT TREATMENT: HARDENED & TEMPERED 32±5HRC	APPROVED	
COMPARED				QTY.: 16 Nos.	 HEAD (Q.A.)	
SCALE: NTS						
ALL DIMENSIONS IN MM			OI/C D&S			
TOLERANCE: UNLESS OTHERWISE SPECIFIED IS:2102(PART1) :1993 MED.			COUPLING BODY MODULE HD SYSTEM FOR AN-32 AIRCRAFT			DRG.No. ADRDE 1403 01 02 01



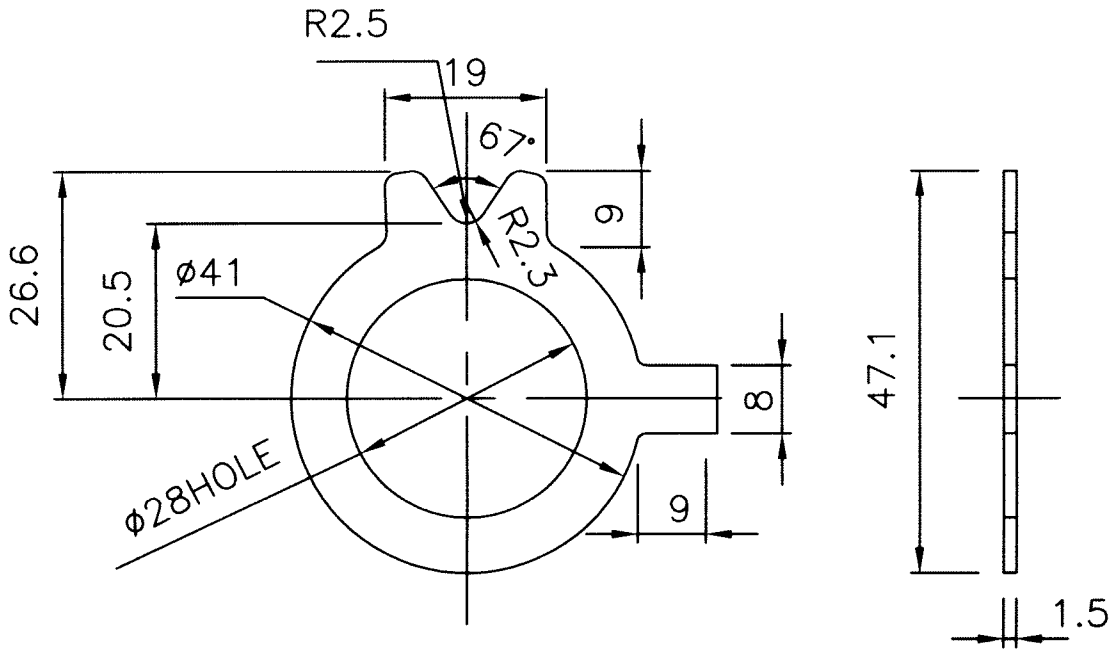
PROCESS : MACHINING

Ref. No.	DATE	ZONE	AUTHORITY	BRIEF RECORD	OI/C D&S	HEAD QA	
	DATE	NAME	HDS	MATERIAL: STEEL ALLOY 070M55, (EN9), AS PER BS:970 FINISH: AS PER ANNEXURE 'C'	ADRDE ; AGRA		
DRAWN		SKS	 OI/C JCD PGD	 HEAT TREATMENT: 32±5HRC	 APPROVED HEAD (Q.A.)		
CHECKED		JCD					
TRACED							
COMPARED			 O/I C D&S	QTY.: 16Nos.			
SCALE: NTS							
ALL DIMENSIONS IN MM			LOCK KEY-COUPLING MODULE				
TOLERANCE: UNLESS OTHERWISE SPECIFIED IS:2102(PART1) :1993 MED.			HD SYSTEM FOR AN-32 AIRCRAFT				DRG.No. ADRDE 1403 01 02 02



PROCESS : MACHINING

Ref. No.	DATE	ZONE	AUTHORITY	BRIEF RECORD	OI/C D&S	HEAD QA	
	DATE	NAME	HDS	MATERIAL: STEEL ALLOY (EN9) 070M55, AS PER BS:970	ADRDE ; AGRA		
DRAWN		SKS		FINISH: AS PER ANNEXURE 'C'			
CHECKED		JCD	JCD PGD				
TRACED			OI/C	HEAT TREATMENT: HARDENED & TEMPERED 32±5HRC	APPROVED		
COMPARED				QTY.: 20Nos	 HEAD (Q.A.)		
SCALE: NTS					OI/C D&S		
ALL DIMENSIONS IN MM					DRG.No.		
TOLERANCE: UNLESS OTHERWISE SPECIFIED IS:2102(PART1) :1993 MED.			NUT-COUPLING MODULE HD SYSTEM FOR AN-32 AIRCRAFT			ADRDE 1403 01 03	



PROCESS : MACHINING

Ref. No.	DATE	ZONE	AUTHORITY	BRIEF RECORD	OI/C	PGD
	DATE	NAME	HDS	MATERIAL: MILD STEEL S42-S, AS PER IS:226	ADRDE ; AGRA	
DRAWN		SKS		FINISH: AS PER ANNEXURE 'C'		
CHECKED		JCD	JCD			
TRACED			OI/C	PGD	APPROVED	
COMPARED				HEAT TREATMENT:	 HEAD (Q.A.)	
SCALE: NTS				QTY.: 20 Nos	DRG.No.	
ALL DIMENSIONS IN MM			OI/C D&S	ADRDE 1403 01 04		
TOLERANCE: UNLESS OTHERWISE SPECIFIED IS:2102(PART1) :1993 COARSE.			LOCK WASHER MODULE HD SYSTEM FOR AN-32 AIRCRAFT			