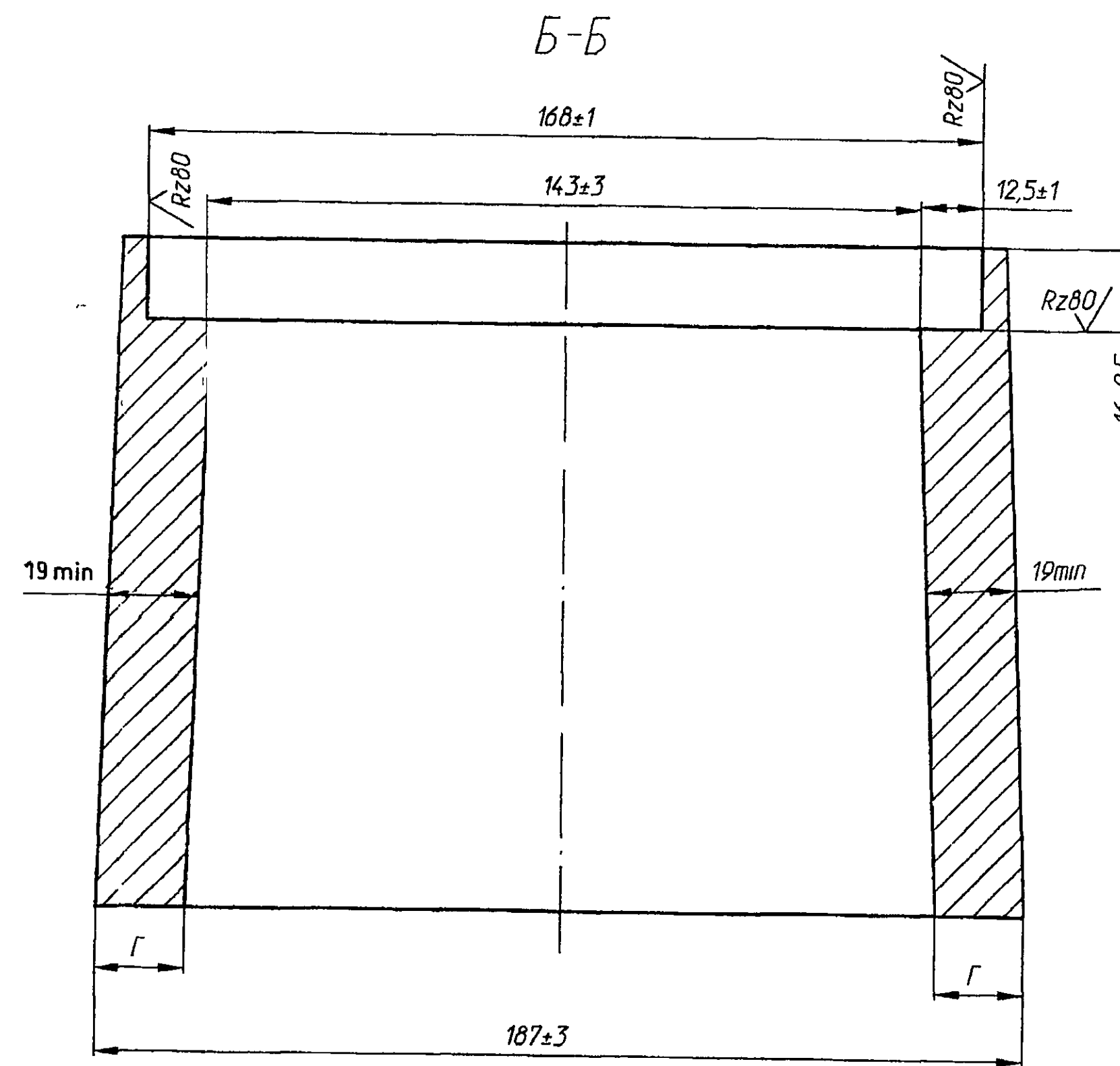
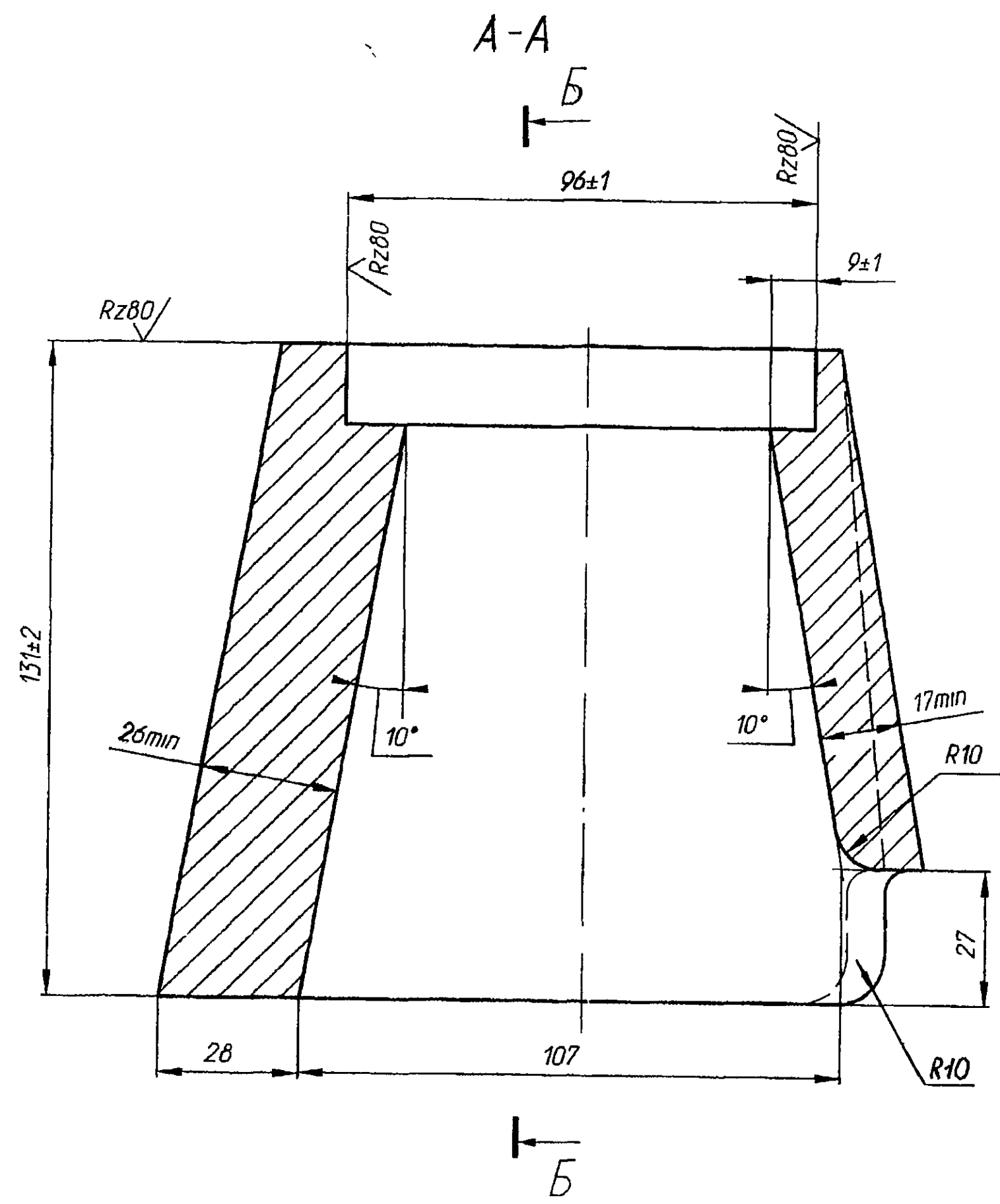


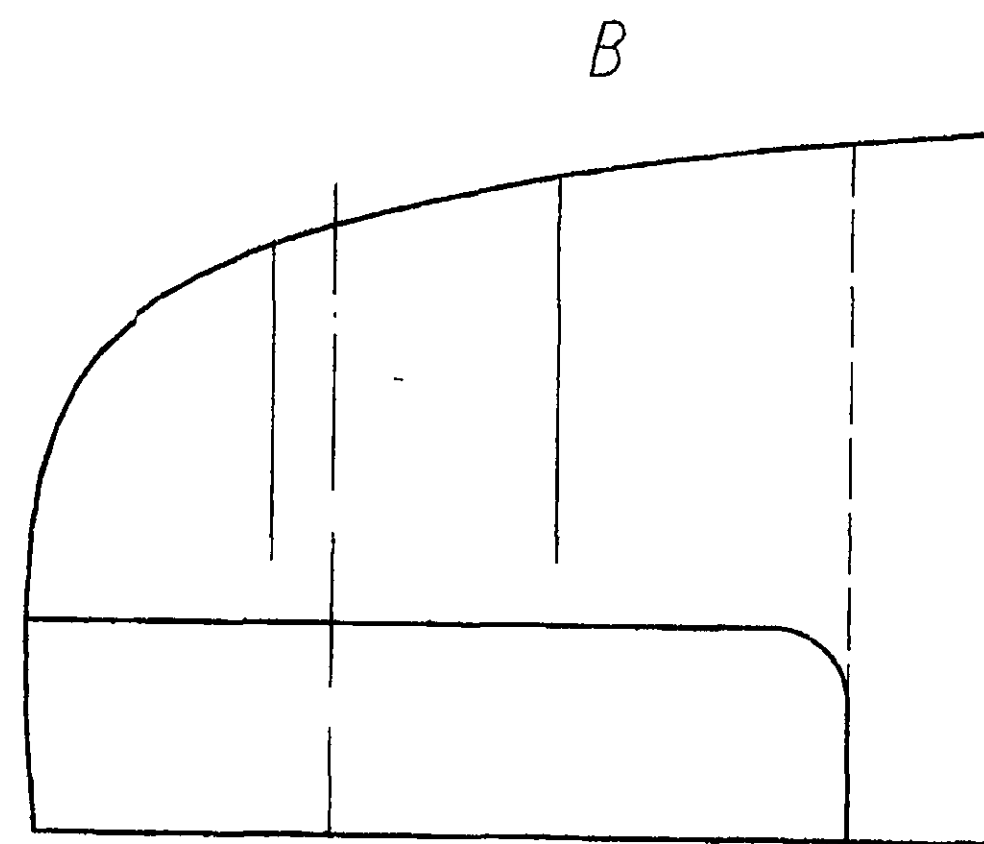
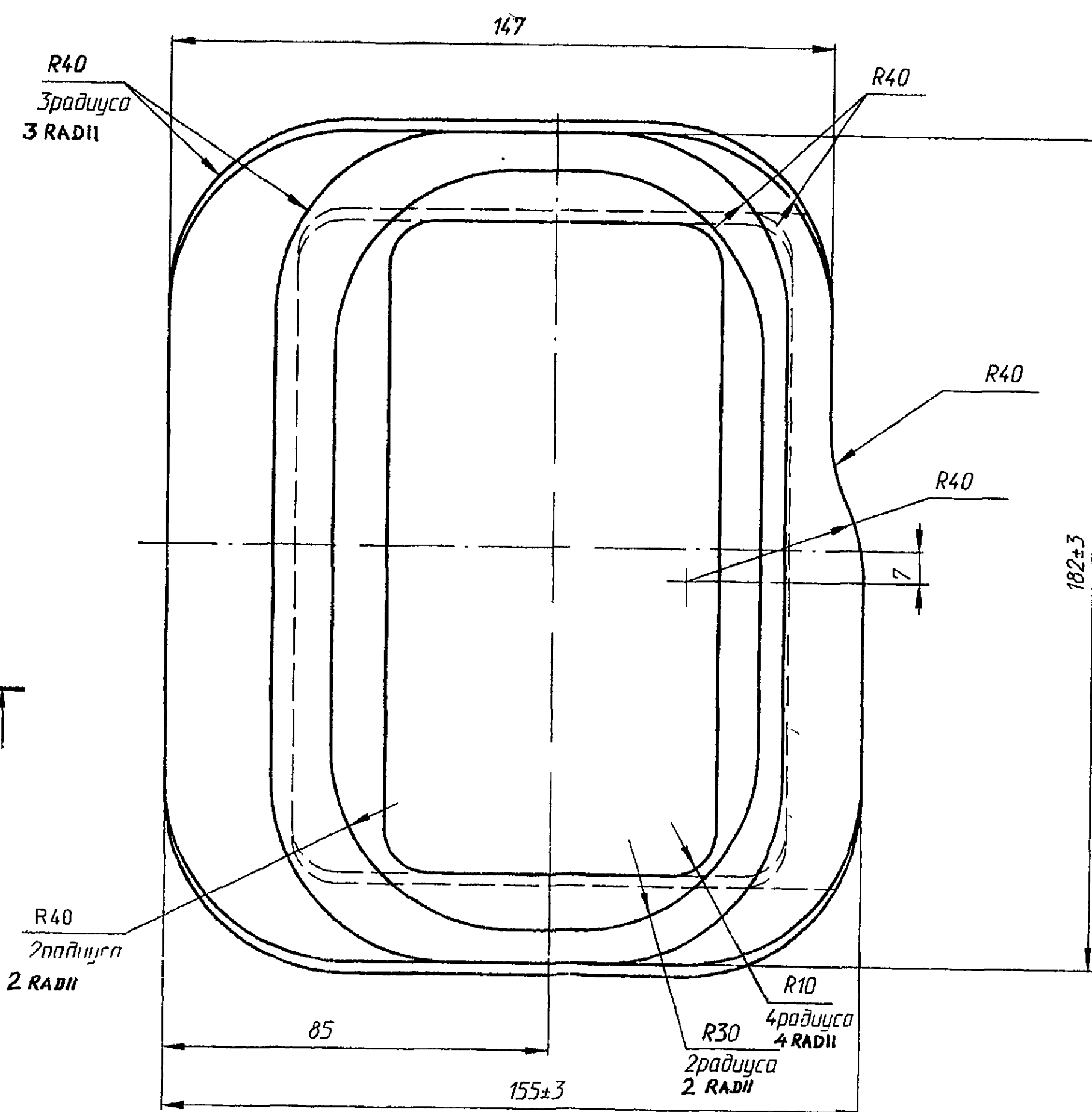
DRAWING NUMBER
188.10.138

SHEET No. 1 OF 1

✓(✓)



1. Grade of steel, heat treatment, procedure for acceptance and tests are as per specification of special steel components. Medium hardness.
2. Requirements for casting are as per 172.TY5.
3. Casting accuracy may be 10-0-0-8 GOST 26645-85.
4. Unspecified rounding off radii are 0⁵ mm
5. Difference in dimension Γ may be 0³ mm
6. Other requirements are as per 520 TY1.



DRG. INDIANISED BASED ON RUSSIAN ORIGINAL ISSUE - NIL

356
SUPPLY CODE
U-01-1-2
D80048
F-69
28
SIZE A1

PILOT SAMPLE SHOULD BE APPROVED BY A H S P BEFORE BULK PRODUCTION.

EST. WT. (Kg) TO BE STAMPED OR MARKED WHERE OTHERWISE STATED MACHINED CORNERS TO HAVE R OUTSIDE R INSIDE EQUIVALENT CHAMFERS ARE PERMISSIBLE.

7

DRN	CHD	APPD	DATE	SCALE:-	DIMENSIONS IN mm	TOLERANCE ON DIMNS UNLESS OTHERWISE STATED IS: 2102-69	ALL THREADS TO CONFORM TO	ISSUE	DATE	NATURE OF AMENDMENTS	MATERIAL:-	USED ON:-
				1:1							SPECIAL STEEL	188.10.071cbCb
											CONTROLLERATE OF QUALITY ASSURANCE (HEAVY VEHICLES) AVADI	
											TITLE:- BASE	
											D S CAT NUMBER	DRAWING NUMBER
												188.10.138