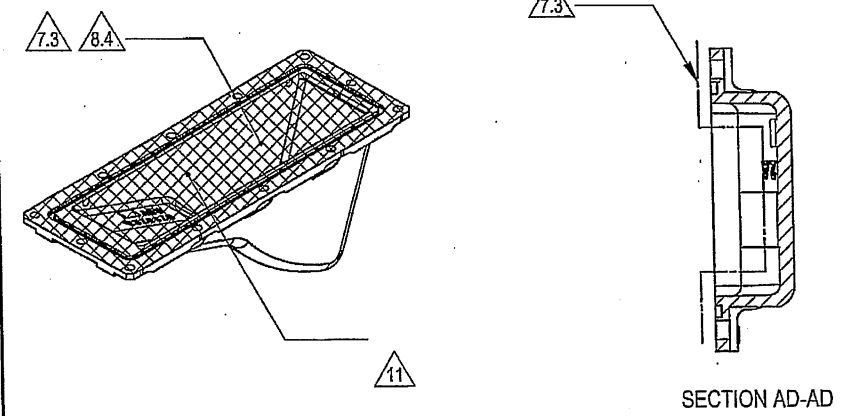
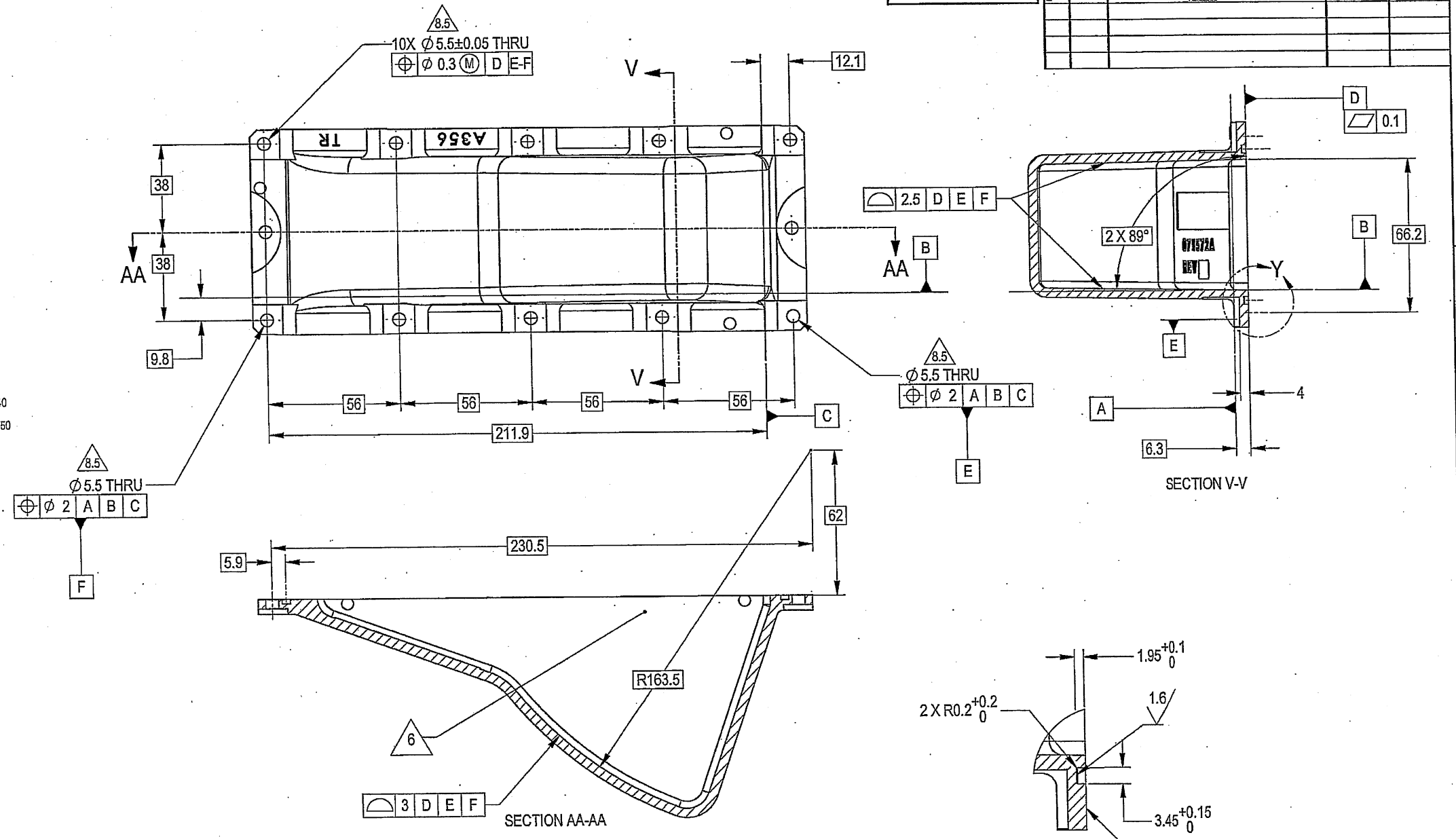


DWG Y25645A-00		SH 1		1	
SHEET REV STATUS					
ALL SHEETS ARE THE SAME REVISION					
REVISION RECORD					
REV	ECO	DESCRIPTION	DATE	APVD	
-	-	Released	08-Oct-18	L. Goldstein	

THIS DOCUMENT AND THE INFORMATION CONTAINED IN IT ARE PROPRIETARY AND CONFIDENTIAL TO OFT. NO PERSON OR ENTITY IS ALLOWED TO COPY, REPRINT, REPRODUCE OR PUBLISH ANY PART OF THIS DOCUMENT, NOR DISCLOSE ITS CONTENTS TO OTHERS, NOR MAKE ANY USE OF IT, NOR ALLOW OR ASSIST OTHERS TO MAKE ANY USE OF IT UNLESS BY THE PRIOR WRITTEN EXPRESS AUTHORIZATION OF OFT AND THEN ONLY TO THE EXTENT AUTHORIZED. COPYRIGHT-OFT.

- NOTES:
- INTERPRET THIS DRAWING IAW ASME Y14.100M.
 - MATERIAL: SEE FN/1.
(BASE MATERIAL: ALUMINIUM ALLOY SAND CASTING A356.0 T6, PER ASTM B26M).
 - FOR DETAILED POSITION OF CASTING DATUMS (A,B,C) SEE CASTING DRAWING FN/1.
 - GENERAL TOLERANCES ACCORDING TO ISO 2768-m.
 - DEBURR AND REMOVE SHARP EDGES APPROX. $0.3 \times 45^\circ$.
 - SERIAL NUMBER SHALL BE MARKED BY VIBRATION OR ELECTRIC PEN IN THE LOCATION SHOWN. CHARACTERS 4 MM HIGH, 0.6 MM LINE WIDTH, 2.5 MM WIDE AND 0.3 MM DEEP. SPACING BETWEEN CHARACTERS 0.8 MM.
 - FINISH:
 - CHROMATIC CONVERSION COATING PER MIL-DTL-5541F, TYPE I, CLASS 3.
 - ANODIC COATING PER MIL-A-8625 TYPE II 15 TO 25 MICRON THICK CLASS 1.
 - THE MARKED AREA AND SHALL BE PROTECTED AGAINST ANODIC COATING.
 - PAINT:
 - PRIMER: LEAD AND CHROMATE FREE EPOXY PRIMER PER MIL-DTL-53022 THICKNESS: 25-40 MICRONS, OR EQUIVALENT APPROVED BY ELBIT.
 - INTERMEDIATE: APPLY TWO LAYERS OF HIGH SOLID EPOXY POLYAMIDE PER MIL-PRF-22750 TYPE II CLASS H, EACH LAYER 30-50 MICRONS.
 - TOP COAT: APPLY TWO LAYERS OF ALIPHATIC POLYURETHANE PER MIL-PRF-85285 OR MIL-C-83286 RAL 9016 MATT. EACH LAYER 30-50 MICRONS.
 - AREAS MARKED BY MUST BE PROTECTED FROM PAINT.
 - MASK THREADS AND HOLES TO PROTECT FROM PAINT.
 - QUALITY ASSURANCE PROVISIONS:
 - QUALITY ASSURANCE PROVISIONS FOR THIS ITEM PER RDMQD00012P.
 - MAJOR CHARACTERISTICS NRS 101 TO 113.
 - PARENTHEICAL FIGURES ARE FOR REFERENCE ONLY.
 - IDENTIFY PER MIL-STD-130 BY STAMPING OR BY LABELLING. CHARACTERS 1.25 MM MIN. HIGH MEETING REQUIREMENTS OF MIL-STD-202F METHOD 215J. LOCATION APPROX. AS SHOWN.
 - PACKAGING AND PACKING: THE FINISHED PART SHALL BE PRESERVED AND PACKAGED IN ACCORDANCE WITH COMMERCIAL PRACTICE.



(WEIGHT APPROX.: 0.48 Kg.)

UNLESS OTHERWISE SPECIFIED
DIMENSIONS ARE IN MM PER ASME Y14.5M - 1994

TOLERANCES		SIGNATURE DATE		ORDNANCE FACTORY TIRUCHIRAPPALLI	
LINEAR	ANGULAR	DRAWN	DATE	TITLE	
SEE NOTE 4	SEE NOTE 4	CHECKED	1/9/18	FOR: PEDESTAL ASSY	
1st ANGLE PROJECTION		HOS/DDO	R. Tan 36/12	OF: 12.7MM SRCG	
SURFACE TEXTURE IN Micro M		OFFICER/PRODN		SIZE	CAGE CODE
		OFFICER/QC		D	2281A
		OFFICER/DDO		DWG NO	Y25645A-00
				SCALE	1:2
				AUTOMATED DRAWING (SW)	REV -
				SHEET	1 OF 1

PROJECT OFFICER: PLM Control

SEE SEPARATE PARTS LIST
SEE ATTACHED MEDIA

OFT

ASSEMBLY PARTS LIST

Assembly Parts List For: Y25645A-00

Rev: -

Status: Released

Description: SECTOR BACK COVER FNSH

FN	CMD	PART NUM	ECO	DESCRIPTION	MB	QTY	U/M	REF. DES./REMARKS	MFG. PN / CUSTOMER	LA	LI
1	CS	071572A-00		SECTOR BACK COVER, CASTING	P	1	Each				