

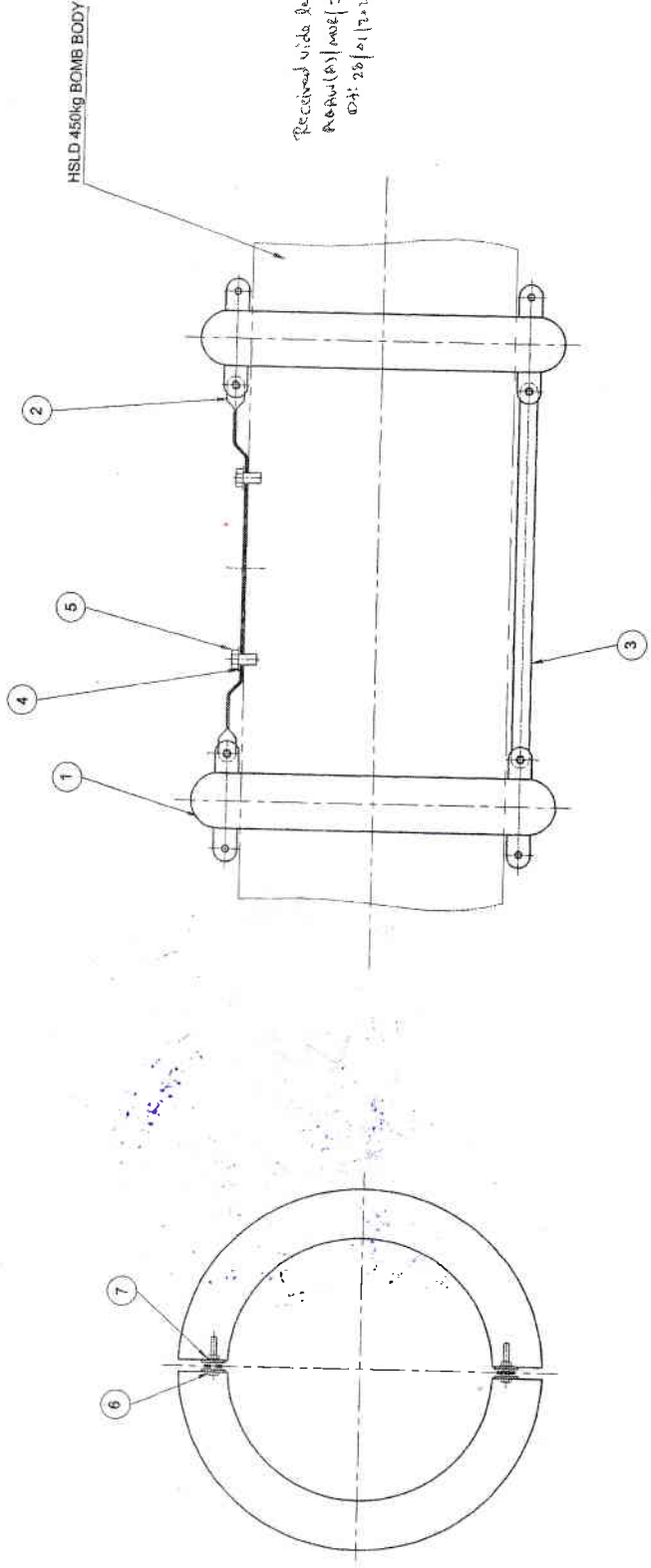
DRG CONVENTIONS CONFORM TO INDIAN STD.
DIMN. IN mm UNLESS OTHERWISE STATED
GEN. TOL. ~~FINE~~/MEDIUM/~~PRECISE~~ CLASS TO IS:2102

DRG No.
ARDE 2122
DET. No. 17 / SHTS
SHT No. 1

केवल व्यापार हेतु
For Trade Only

LIST OF COMPONENTS

ITEM No.	NOMENCLATURE	NO. OFF	MATL	DRG NO.	DET No.	PART No.
1	RING WELDING ASSY (TWO QUADRANT)	4		ARDE 2122	18 SHTS 6, SHT NO 1	A
2	COVER PLATE	1		ARDE 2122	19	
3	CLAMPING PLATE	1		ARDE 2122	20	
4	SPRING WASHER M16 to IS:3063:1994	2	STEEL	N.D.		
5	HEX. BOLT M16 x 25 L, IS:1363:2002	2	STEEL	N.D.		
6	HEX. BOLT M8 x 50 L, IS:1363:2002	8	STEEL	N.D.		
7	PUNCHED WASHER M8, IS:2016:1967	8	STEEL	N.D.		B



को भेजा गया
ISSUED TO MCO.....

DRN. Ashwath	CHD. Gun	TRD.	COMP.
CD	PASSER A. Banna	SCALE 1:5	EST. MGS
APPROVED	APPROVED	GAUGE SCHO	DATE: 01.07.1986
C. Srinath, Sr. P	For Director		
CD	GO	ZONE	SIGN
DRG SEALED: RD - ROMA/AA	10.11.2020		
TITLE: ROLLING RING GENERAL ARRANGEMENT			
DRG No.	ARDE 2122	ISSUE 1	
DET. No. 17	SHTS	SHT No.	
PART No.			
DS CAT. No.			
ANSP			

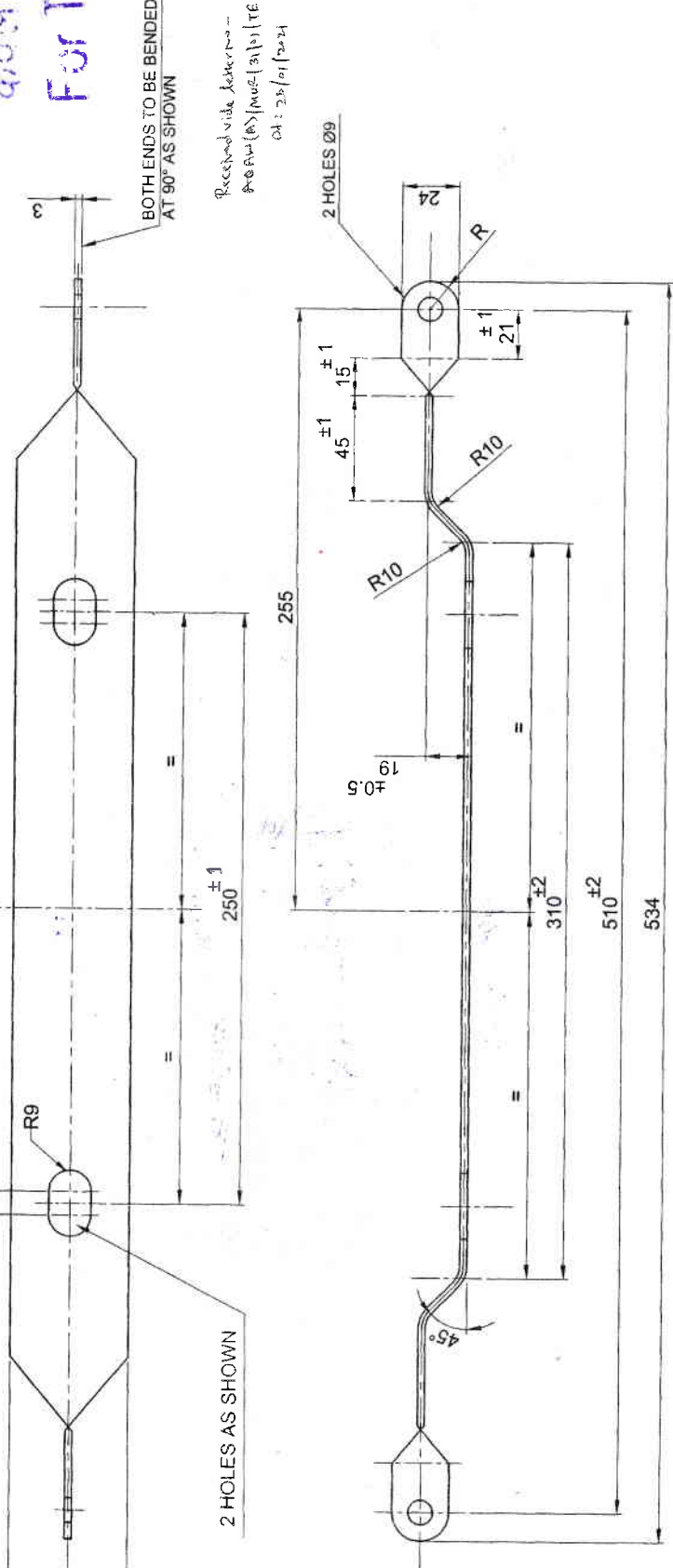
ROLLING RING GENERAL ARRANGEMENT

1 2 3 4 5 6 7 8

DRG. No.	ARDE 2122	ISSUE 1
DET. No. 19	SHTS	SHT No.
DRG. CONVENTIONS CONFORM TO INDIAN STD. DIMN. IN mm UNLESS OTHERWISE STATED.		
GEN. TOL. FINE MEDIUM GOOD CLASS TO IS:2102		

- NOTE :- ALL SHARP EDGES & BURRS ARE TO BE REMOVED.
PAINTING:-
1. FIRST COAT : PAINT, PRE-TREATMENT PRIMER (ETCHING PRIMER) TYPE SPRAYING TO Spec. DEF STAN 80-15/2
Colour - Red Oxide, ISC No.446 TO IS:52004
2. SECOND COAT : PAINT, PRIMING CHLORINATED RUBBER TYPE SPRAYING TO Spec. DEF STD 80-72/3.
Colour - Red Oxide, ISC No.446 TO IS: 52004
3. THIRD COAT : PAINT FINISHING, CHLORINATED RUBBER TYPE SPRAYING TO Spec. DEF STD 80-72/3.
Colour - Deep Bronze Green, ISC No.224 MATTI FINISH TO IS: 52004.
4. ALL COATS OF PAINTS TO BE APPLIED ALL OVER EXTERNALLY.
5. REFER ARDE/SPEC/581 FOR APPLICATION OF PAINT.

For Trade Only



PROTECTIVE FINISH:- PHOSPHATED TO IS: 3618:1966, CLASS 'B' FOLLOWED BY PAINTING.

DRN. Ashiyadit	CHD. Guru	TRD.	COMP.
CD	PASSED	SCALE: 1:2	DESIGN AUTHORITY
Guru	C Srikanth, Sc F	EST. MASS:	ARDE PUNE - 411021
APPROVED	For Director	GAUGE SCHD:	
C Srikanth, Sc F	DATE: 01.07.1986	MATL: STEEL TO IS: 1079: 2009, Desg. HR 5	
CD	GO	SIGN	
ZONE			
BRIEF RECORD	10.11.2020		
DRG SEALED: RD - RCMA(AA)			

DRG. No.	ARDE 2122	ISSUE 1
DET. No. 19	SHTS	SHT No.
PART No.		
DS CAT. No.		
AHSP		

TITLE: COVER PLATE

को भेजा गया
ISSUED TO.....M.C.D.....

1 2 3 4 5 6 7 8

29 4 3 2 1

CLAMPING PLATE

DRG. No. ARDE 2122
ISSUE 1

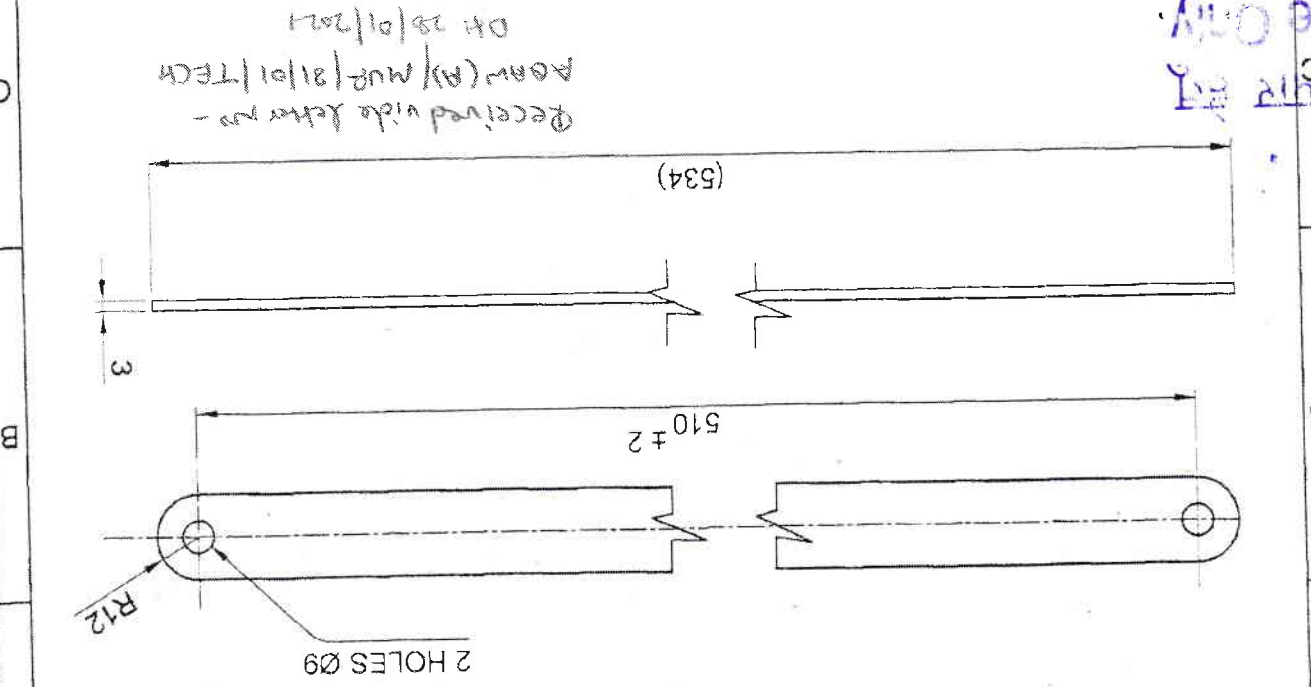
ASSY DRG. ARDE 2122/17
COMP. TRD. (G.M.)
SCALE: 1:2
EST. MASS:
GAGE SCHED:
DATE: 01.07.1986
C Shikant, Sc.F.
APPROVED
For Director
MATERIAL: STEEL TO IS: 1079; 2009, Desg. HR 5



DESIGN AUTHORITY
ARDE PUNE - 411021

St. No.	DATE	AUTHORITY	BRIEF RECORD	ZONE	SIGN
1	21.08.20	ARDE	DIMN. 510 WAS 540, DIMN 534 WAS 564	B-3-C-3	(G.M.)
			DRAWING REDRAWN IN FIRST ANGLE		GO

DRG SEALED: RD - RCMA(AA) 10-11-2000
DRN, Ashiya (G.M.)
PASSED (G.M.)
C Shikant, Sc.F.
Guru
APPROVED
C Shikant, Sc.F.
DATE: 01.07.1986
MATERIAL: STEEL TO IS: 1079; 2009, Desg. HR 5

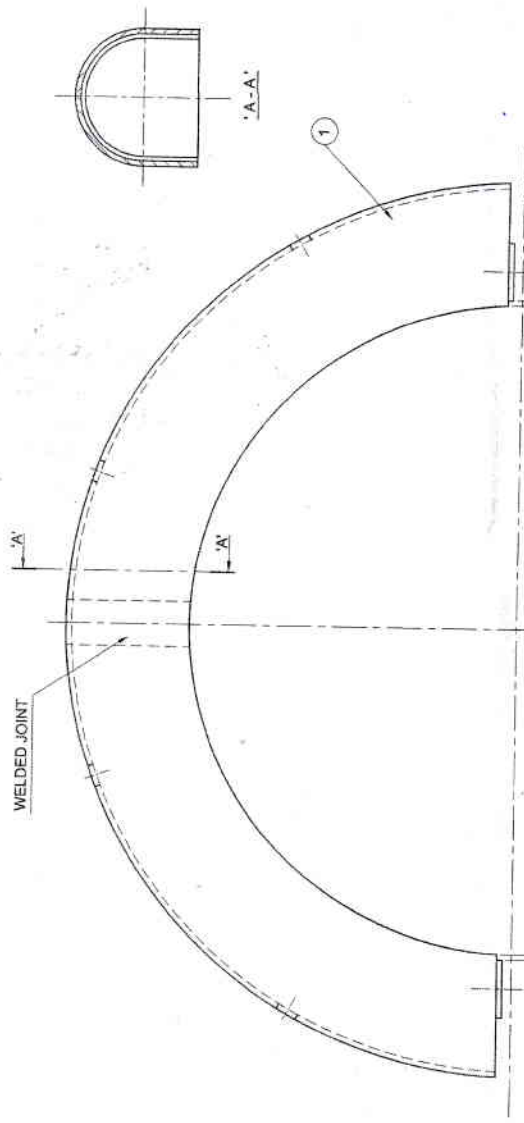
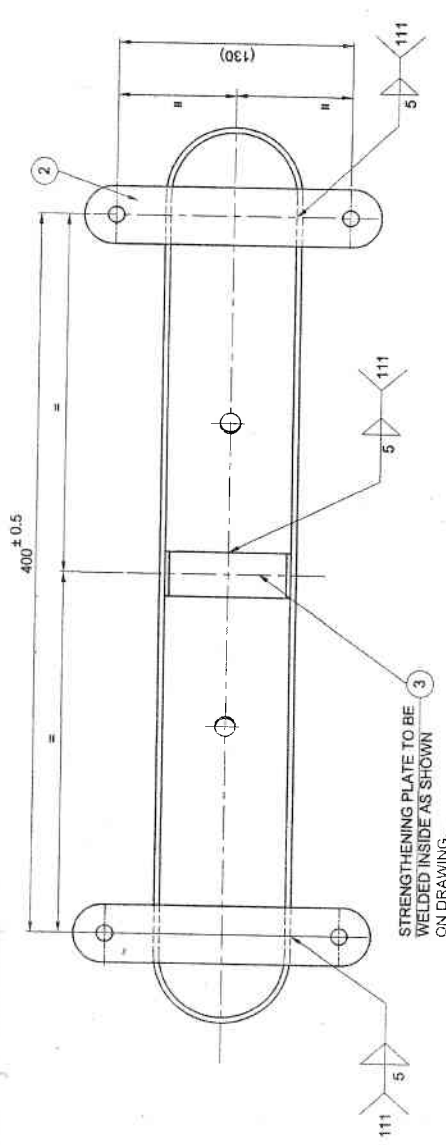


DRG. CONVENTIONS CONFORM TO INDIAN STD. DIMN. IN mm UNLESS OTHERWISE STATED.
GEN. TOL. FINE/MEDIUM/COARSE CLASS TO IS:2102
NOTE:- ALL SHARP EDGES & BURRS ARE TO BE REMOVED
DRG. No. ARDE 2122
ISSUE 1
DET. No. 20 SHTS SHT No.

DRG. CONFORM TO INDIAN STD. DIMN. IN mm UNLESS OTHERWISE STATED.

ISSUED TO: M.C. 1
Date: 21/08/20

DRG. CONVENTIONS CONFORM TO INDIAN STD.
DIM. IN mm UNLESS OTHERWISE STATED.
GEN. TOL. ~~AS PER~~ MEDIUM / ~~AS PER~~ SPEC CLASS TO IS:2102
DRG. No. ARDE 2122



LIST OF COMPONENTS

ITEM No.	NOMENCLATURE	NO. OFF	MATL	DRG NO.	DET No.	PART No.
1	RING	1		ARDE 2122	18 SHTS 6, SHT No.2	
2	PLATE (For Ring)	2		ARDE 2122	18 SHTS 6, SHT No.3	
3	STRENGTHENING PLATE - 1	1		ARDE 2122	18 SHTS 6, SHT No.4	

FOR ALTERNATE DESIGN SEE DRG No. ARDE-2122/18, SHTS 6, SHT No 5.

केवल व्यापार हेतु
For Trade Only

Received with letter no -
ARDE (AS) / 1002 / 1310 / 1974
Dt: 23/01/2021

- NOTES:-
- PROCEDURE/GUIDELINE OF WELDING SHOULD MEET THE REQUIREMENT OF SPEC: IS:817:1986; 817:(PART-1):1992, IS:817 (PART 2):1996, IS:7307:(PART1):1970 & IS:7310:(PART-1):1974.
 - TESTING OF WELDED JOINTS TO BE DONE BY DP TEST TO IS:3658:1999.
 - WHILE WELDING CARE SHALL BE TAKEN FOR MAINTENANCE OF CENTER DISTANCE 400 ± 0.5.
 - IMMEDIATELY AFTER SATISFACTORY DP TEST, THE WELDED REGION SURFACE TO BE THOROUGHLY CLEANED & TO BE COLD PHOSPHATED.

PAINTING:

- FIRST COAT: PAINT, PRE-TREATMENT PRIMER (ETCHING PRIMER) TYPE SPRAYING TO Spec. DEF STAN 80-152 Colour - Red Oxide, ISC No.446 TO IS:5:2004
- SECOND COAT: PAINT, PRIMING CHLORINATED RUBBER TYPE SPRAYING TO Spec. DEF STD 80-723 Colour - Red Oxide, ISC No.446 TO IS: 5:2004
- THIRD COAT: PAINT, FINISHING, CHLORINATED RUBBER TYPE SPRAYING TO Spec. DEF STD 80-723, Colour - Deep Bronze Green, ISC No.224 MATT FINISH TO IS: 5:2004.
- ALL COATS OF PAINTS TO BE APPLIED ALL OVER INTERNALLY & EXTERNALLY.
- REFER ARDE/SPEC/581 FOR APPLICATION OF PAINT.

PROTECTIVE FINISH: PHOSPHATED TO IS: 3616:1986 CLASS 'B' FOLLOWED BY PAINTING.

DRG. No.	ARDE 2122
DET. No.18	SHTS 6
PART No.	
DS CAT. No.	
AHSP	

DRG. No.	ARDE 2122
DET. No.18	SHTS 6
PART No.	
DS CAT. No.	
AHSP	

DRG. No.	ARDE 2122
DET. No.18	SHTS 6
PART No.	
DS CAT. No.	
AHSP	

DRG. No.	ARDE 2122
DET. No.18	SHTS 6
PART No.	
DS CAT. No.	
AHSP	

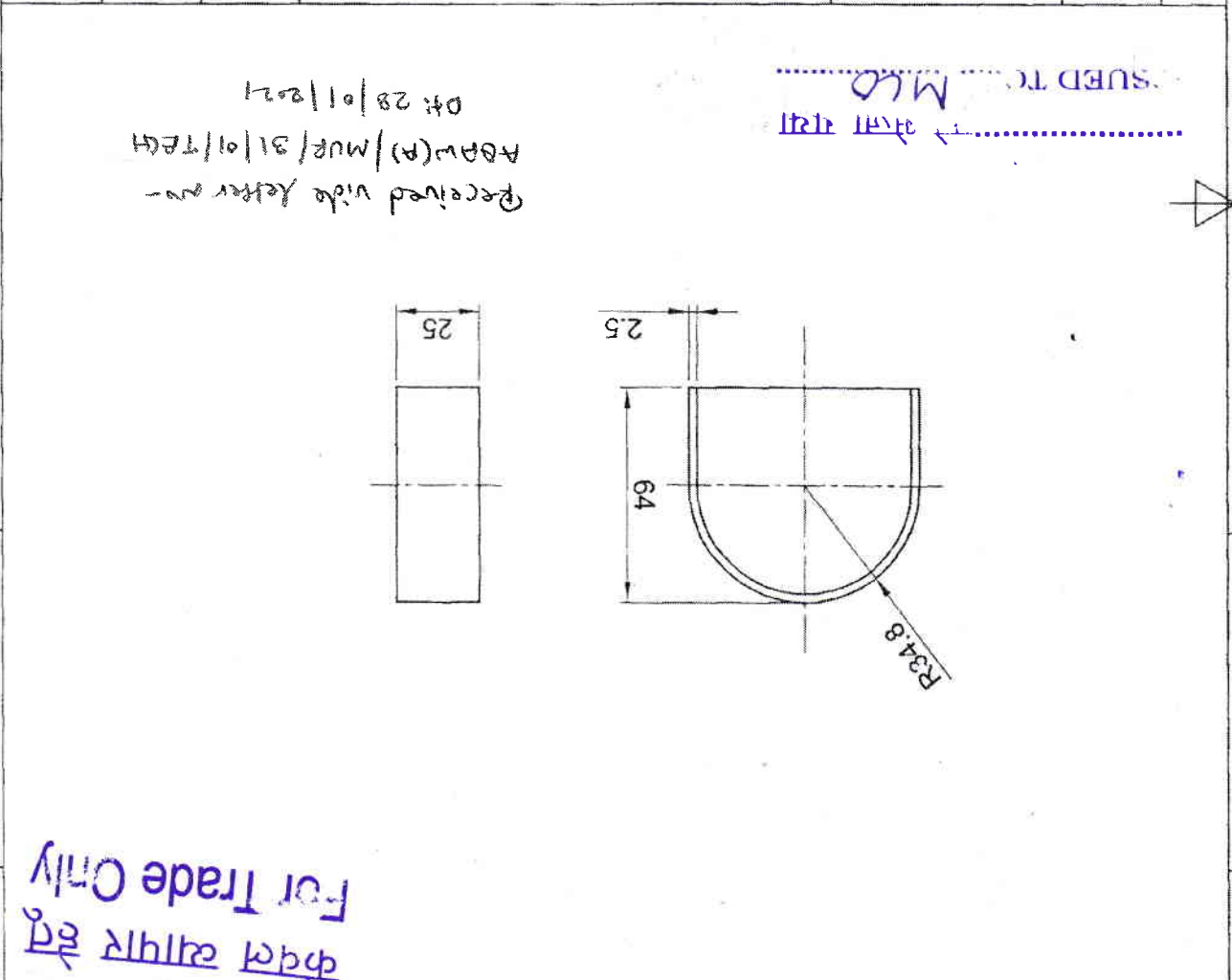
RING WELDING ASSY (TWO QUADRANT)

.....
ISSUED TO..... M.60

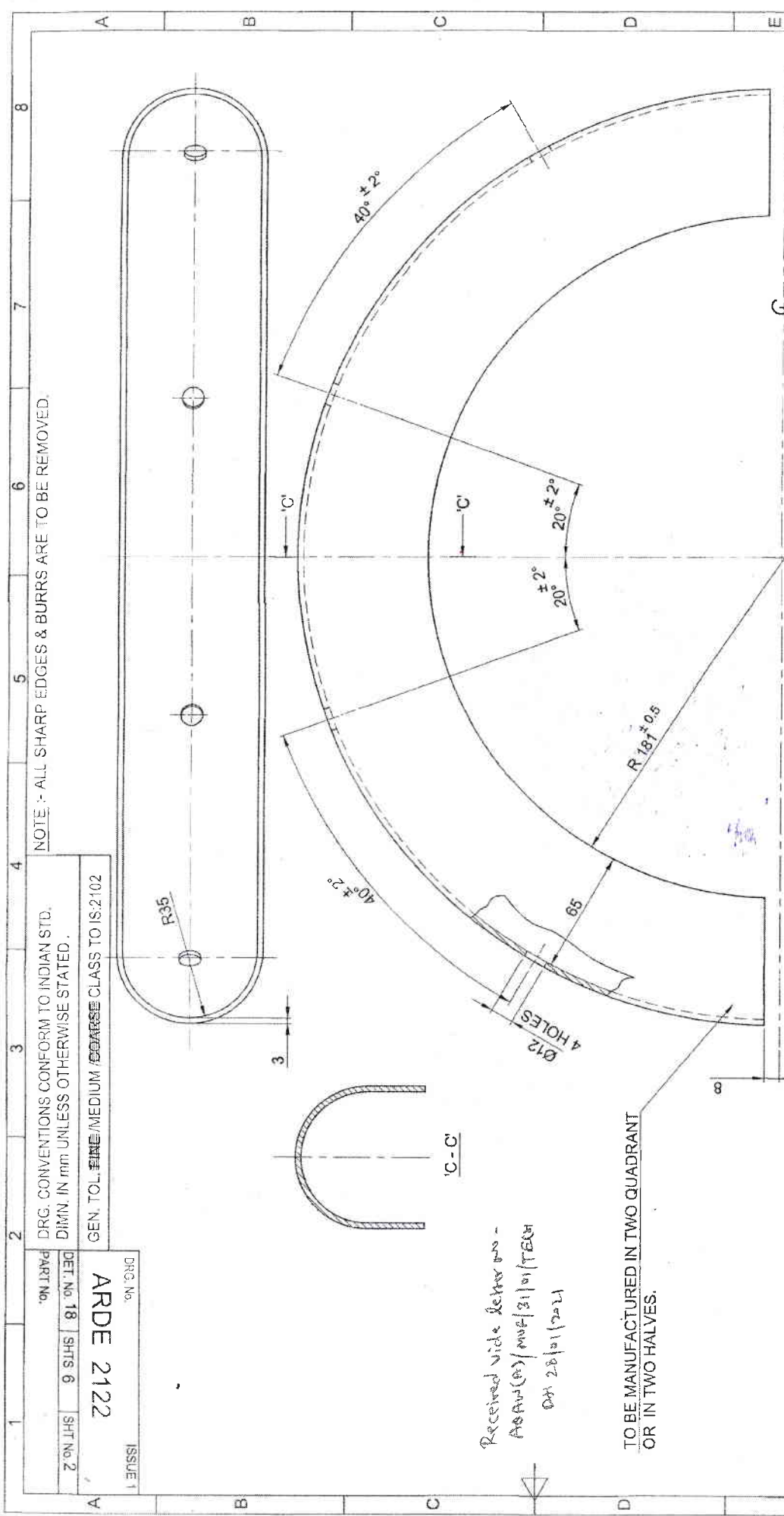
STRENGTHENING PLATE - 1

DRG. No. ARDE 2122		SHT No. 4		SHTS 6		DET. No. 18		PART No.		DS CAT. No.		AHP	
ISSUE 1													
PROTECTIVE FINISH:													
MATERIAL: STEEL TO IS: 1079; Desg. HR 5													
APPROVED:		Guru		A. Rama		DATE: 01.07.86		Gauge Schd:		For Director		C. Srinanth, Secy.	
CD		PASSED		SCALE: 1:2		EST. MASS:		TRD.		COMP.		ASSY DRG. ARDE 2122/18 SHT 1	
DRN. Ashiya		CHD. Guru		TRD.		COMP.		ASSY DRG. ARDE 2122/18 SHT 1		DESIGN AUTHORITY		ARDE PUNE - 411021	

Sr. No.	DATE	AUTHORITY	BRIEF RECORD	ZONE	SIGN
1	21.08.20	ARDE	DRAWING REDRAWN IN FIRST ANGLE.		GO



DRG. No. ARDE 2122		SHT No. 4		SHTS 9		DET. No. 18		PART No.		DIMN. IN mm UNLESS OTHERWISE STATED.		GEN. TOL. FINE/MEDIUM/COARSE CLASS TO IS:2102	
ISSUE 1													



NOTE :- ALL SHARP EDGES & BURRS ARE TO BE REMOVED.

DRG. CONVENTIONS CONFORM TO INDIAN STD.
DIMN. IN mm UNLESS OTHERWISE STATED.

GEN. TOL. FINE/MEDIUM COARSE CLASS TO IS:2102

DRG. NO.	ARDE 2122
ISSUE 1	
PART NO.	
DET. NO. 18	SHTS 6
SHT No. 2	

Received vide letter no -
ASAD(M)/MWF/21/01/TECH
Ddt 28/01/2021

TO BE MANUFACTURED IN TWO QUADRANT
OR IN TWO HALVES.

DRG. No.	ARDE 2122	ISSUE 1
DET. No. 18	SHTS 6	SHT No. 2
PART No.		
DS CAT. No.		
AHSP		
ASSY.DRG. - ARDE 2122 / 18 SHEET 1	DESIGN AUTHORITY	ARDE PUNE - 411021
CD	PASSED	SCALE: 1:2
Guru	A. Ramrao	EST. MASS:
APPROVED	<i>[Signature]</i>	GAUGE SCHD:
C Srinanthi, Sc.F	For Director	DATE: 01.07.86
GO	GO	MATL: STEEL TO IS: 1079 - 2009, Desg. HR. 5
OD	SIGN	
ZONE		
BRIEF RECORD		
DRG SEALED: RD - RCMA(AA)	<i>[Signature]</i>	10.11.2020
PROTECTIVE FINISH:		
TITLE:		
RING		
को भेजा गया		
ISSUED TO..... M.L.G.....		
केवल व्यापार हेतू		
For Trade Only		

PLATE (FOR RING)

TITLE:

PROTECTIVE FINISH:

MATL: STEEL TO IS: 1079 : 2009, Desg. HR 5

APPROVED

For Director

DATE: 01.07.88

GAUGE SCHED:

EST. MASS:

SCALE: 1:2

TRD.

COMP.

ASSY DRG. ARDE 2122/18 SHT 1

CHD. GURU

DRN. Ashiya

DRG SEALED: RD - RCMA(A)

10-11-2020

DESIGN AUTHORITY

ARDE PUNE - 411021



ARDE 2122

ISSUE 1

DET. No. 18 SHTS 6 SHT No. 3

PART No.

DS CAT. No.

AHSP

Sr. No.	DATE	AUTHORITY	BRIEF RECORD	ZONE	CD	SIGN
---------	------	-----------	--------------	------	----	------

1

21.08.20

ARDE

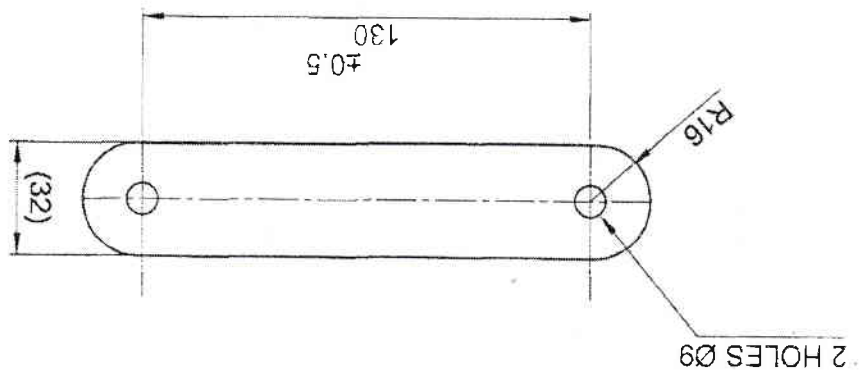
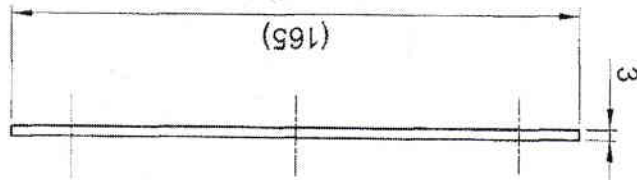
DIMM. 130 WAS 100, DIMN 165 WAS 132

DRAWING REDRAWN IN FIRST ANGLE.

B-2-C-2

GO

Received vide letter no -
 P/040 (A) / MVE/31/01/TECH
 Dt: 28/01/2021



For Trade Only

DRG. No. ARDE 2122

DET. No. 18 SHTS 9 SHT No. 3

PART No.

GEN. TOL. ~~FINE~~ / MEDIUM / COARSE CLASS TO IS: 2102

DRG. CONVENTIONS CONFORM TO INDIAN STD. DIMM. IN mm UNLESS OTHERWISE STATED.

NOTE:- ALL SHARP EDGES & BURRS ARE TO BE REMOVED. ISSUED TO MLO

For Trade Only