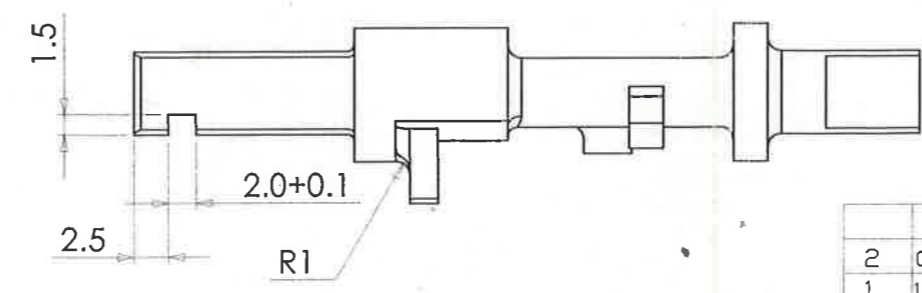
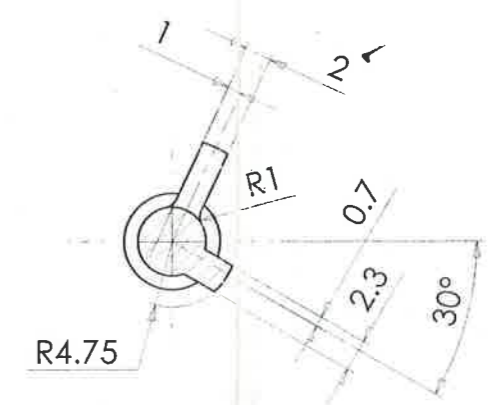
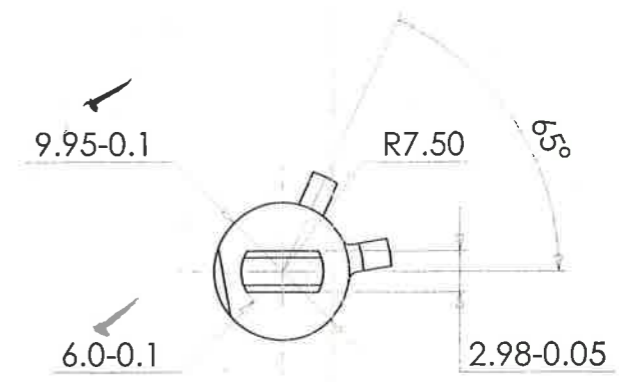
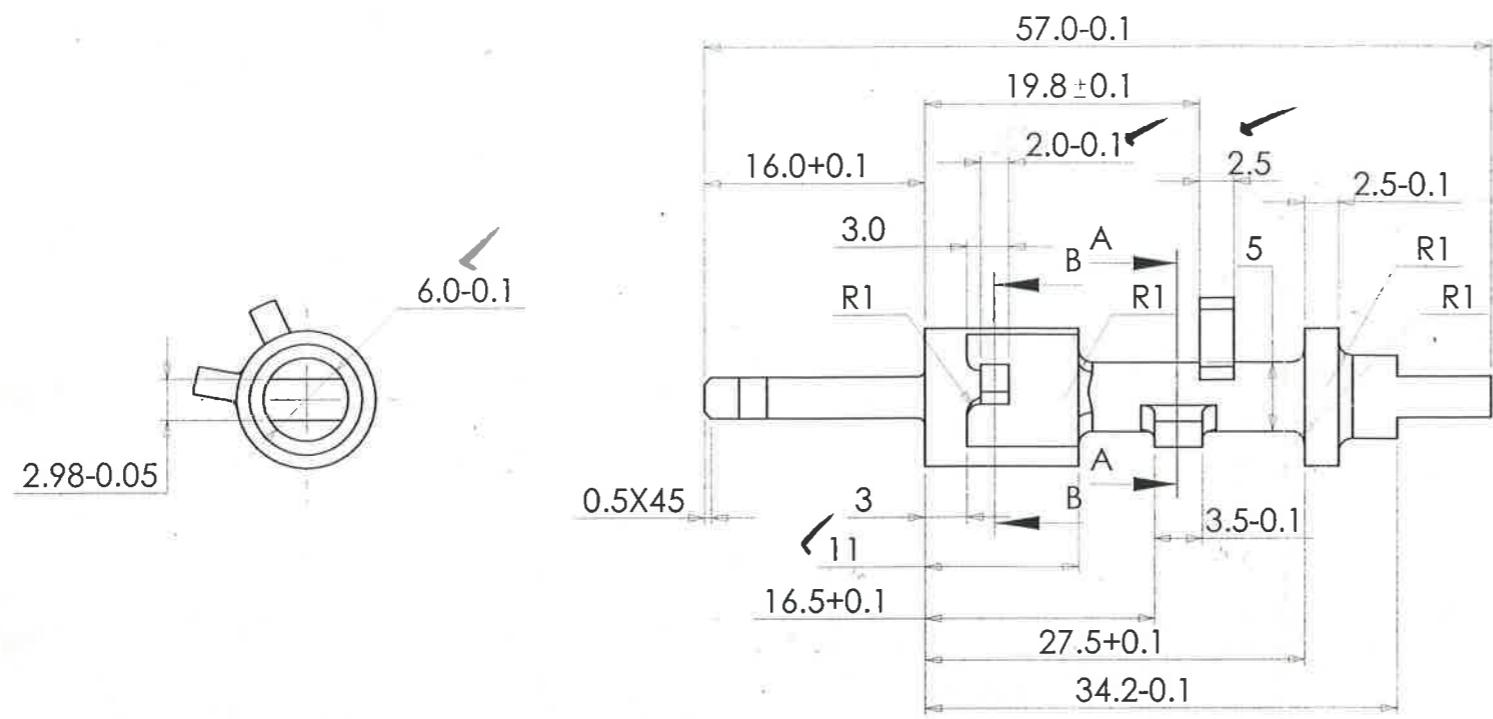
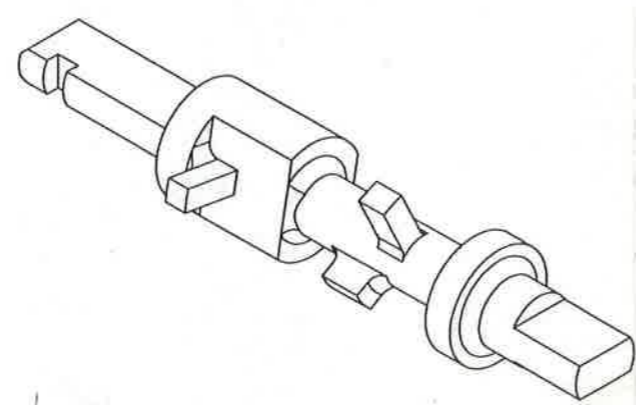
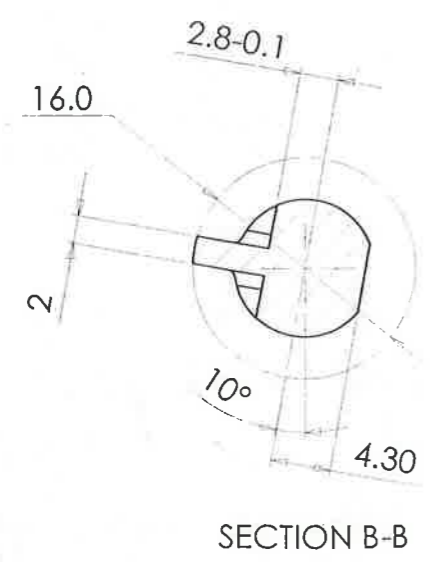


DRG NO 0204 0302 0200100DC
 IC SS S AA A C SSS
 GEN.TOL. : ±0.2
 DRAWING CONVENTION CONFIRM TO INDIAN STDS.
 DIMM.IN mm UNLESS OTHERWISE STATED

- NOTES:-**
- 1) REMOVE ALL SHARP EDGES AND BURRS.
 - 2) HEAT TREATMENT :- CASE HARDENED TO A DEPTH OF 0.13-0.26.
 - 3) HARDNESS:- 500-550 HV.
 - 4) TOL FOR ANGLES ±30' UNLESS OTHERWISE STATED.
 - 5) DIMENSIONS TO BE READ AS APPLIED AFTER PROTECTIVE FINISH.
 - 6) ALT MATERIAL: MIM 9310 (AISI 9310 Equivalent).
HARDNESS:- 500-600 HV CASE DEPTH 0.1-0.3 mm



Dwg verified on 14/3/16
[Signature]



Received on 29/11/15

2	09/11/2015	M-29	DRG. REVISED	---	[Signature]
1	14/07/2015	M-27	ALT MATL ADDED	---	
SR NO	DATE	AUTHORITY	BRIEF RECORD	ZONE	CD GO SIGN
DRN PRANAV	CHD	[Signature]	MATERIAL		
APPD	DATE	09/11/15	STEEL TO IS:4432 1988 Gr 13Ni13Cr3 (En-36B)		
SEALED	DATE	[Signature]	PROTECTIVE FINISH		
SCALE	EST MASS	2:1	PHOSPHATED TO SPECN. IS: 3618-1966, CLASS'B'		
DESIGN AUTHORITY		ARDE	TITLE		
			STUD CHANGE LEVER		
DRG NO	0204	0302	0200100DC		
	IC	SS	S	AA	A
PART NO		DS CAT NO		AHSP	

CONTROL COPY No. 1