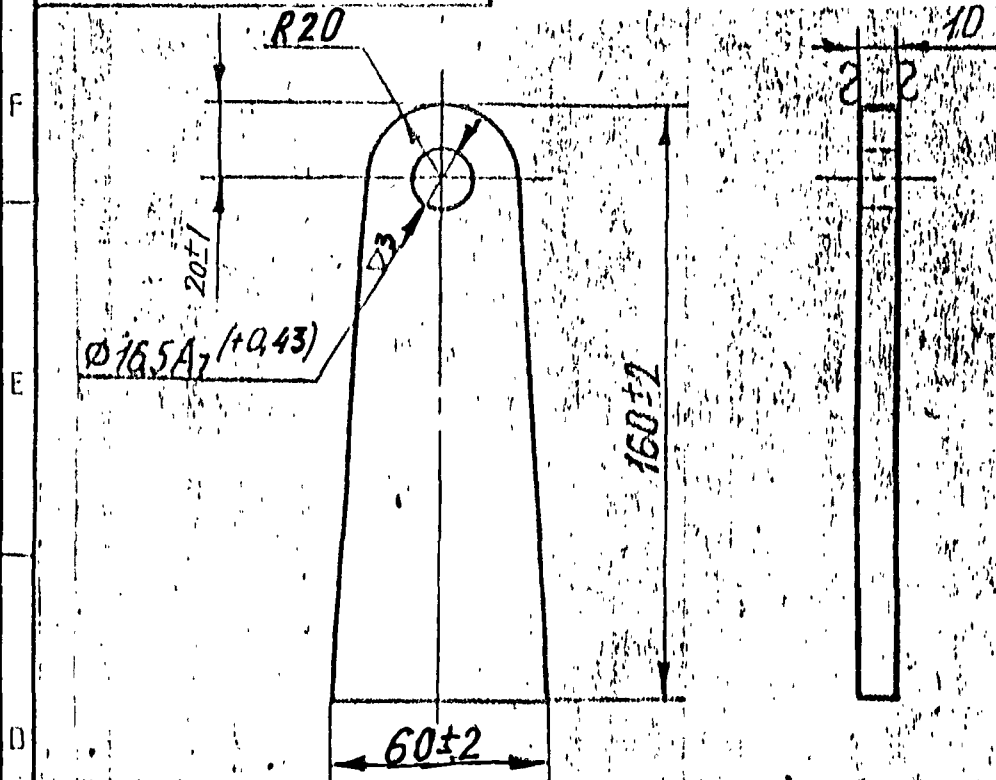


DRAWING NUMBER
175 10 033

630 (▽)



1. MAY BE MANUFACTURED FROM OPEN HEARTH STEEL 10, 20, 25 GOST 1577-70.
2. DRAFTS AND SHRINKAGE OF EDGES ARE ALLOWED.
3. TOLERANCE FOR THICKNESS AS PER GOST 19903-74.
4. TECHNOLOGICAL ALLOWANCE FOR CUTTING ALONG DIMENSION 160 IS PROVIDED.
5. ROUNDING OFF OF CORNERS UP TO R5mm IS ALLOWED.

PILOT SAMPLE SHOULD BE APPROVED BY A H S P BEFORE BULK PRODUCTION.

F-30
37

EST. WT. 0.573 Kg	TO BE STAMPED OR MARKED WHERE INDICATED THIS ≡ (LETTERS)
----------------------	---

ALL SHARP EDGES AND CORNERS TO BE REMOVED UNLESS OTHERWISE STATED MACHINED CORNERS TO HAVE R OUTSIDE R INSIDE EQUIVALENT CHAMFERS ARE PERMISSIBLE.

MATERIAL :- OPEN HEARTH STEEL 15 GOST 1577-70	USED ON 172 10 032 Cb-2 172 10 032 Cb-3
---	---

ISSUE DATE	NATURE OF AMENDMENTS
DRN	SCALE: - 1 : 2
CHD	DIMENSIONS IN mm
TCD	TOLERANCE ON DIMENSIONS UNLESS OTHERWISE STATED IS 2102-69
APPD	ALL THREADS CONFORM TO
DATE	
27-10-88	
SIZE A4	

CONTROLLERATE OF QUALITY ASSURANCE (HEAVY VEHICLES) AVADI.

	TITLE STRIP
--	-----------------------

D S CAT NUMBER	DRAWING NUMBER 175 10 033
----------------	-------------------------------------

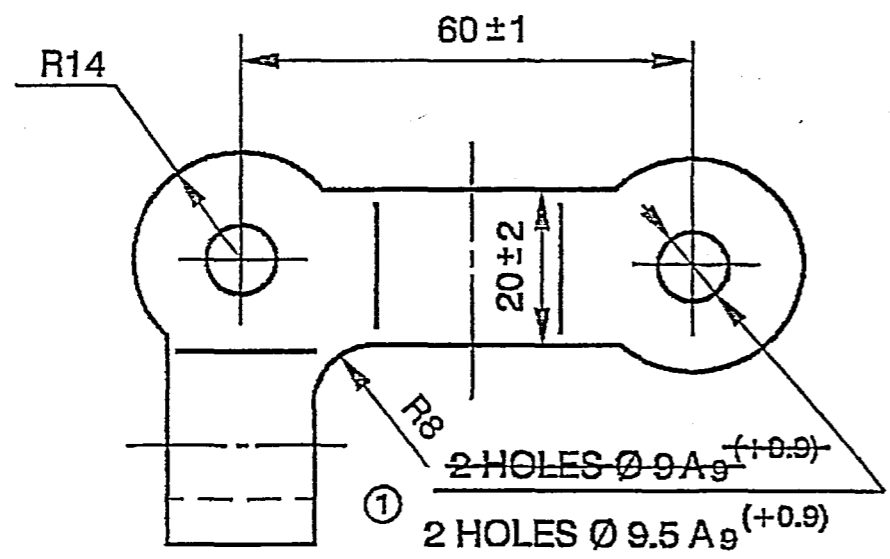
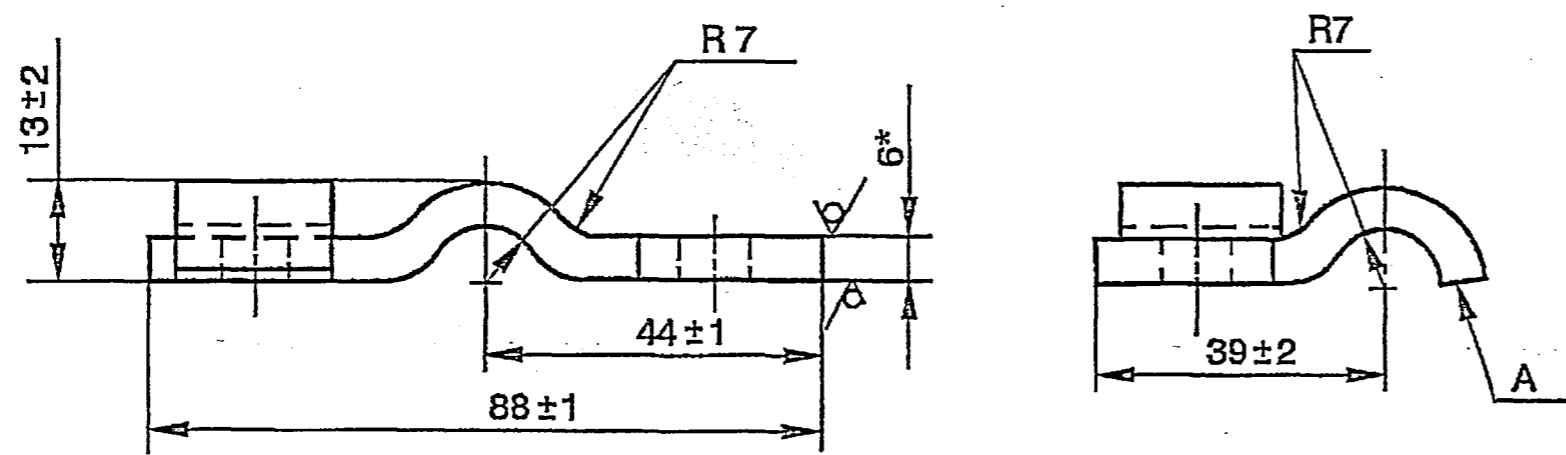


(B. AYAVÉLU, JT01D)
02 MAR '07

"COMMON TO T-90" & BLT
DRG RE-INDIANISED BASED ON RUSSIAN ORIGINAL ISSUE:- NIL

DRAWING NUMBER 175.04.044-A SHEET No 1 OF 1

UNLESS OTHERWISE SPECIFIED Rz630 ✓ (✓)



1. ALTERNATE MATERIAL SHEET 6 GOST 19903-74
10 К П Г О С Т 1577-70.
SHEET 6 GOST 19903-74
20 GOST 1577-70.
2. THE COMPONENT PROFILE MAY BE CHECKED WITH GAUGE CONSTRUCTED AS PER NOMINAL SIZES. DEVIATION SHOULD NOT EXCEED 2 mm.
3. CORNERS MAY BE ROUNDED OFF UP TO R 5 mm.
4. POSITION OF EDGE "A" SHOULD NOT BE CHECKED.
5. OTHER REQUIREMENTS SHOULD BE IN COMPLIANCE WITH SPECIFICATIONS 520 TY 1.
6. SHIFT OF HOLES $\varnothing 9.5 A_9 (+0.9)$ FROM THEIR NOMINAL POSITION SHOULD NOT EXCEED 1 mm.
7. * DIMENSION FOR REFERENCE.

** PV572.0718.0056 (1C)

PILOT SAMPLE SHOULD BE APPROVED BY A H S P BEFORE BULK PRODUCTION

EST WT (Kg) 0.105 TO BE STAMPED OR MARKED WHERE INDICATED THUS # (LETTERS)

ALL SHARP EDGES AND CORNERS TO BE REMOVED UNLESS OTHERWISE STATED MACHINED CORNERS TO HAVE R OUT SIDE R INSIDE EQUIVALENT CHAMFERS ARE PERMISSIBLE

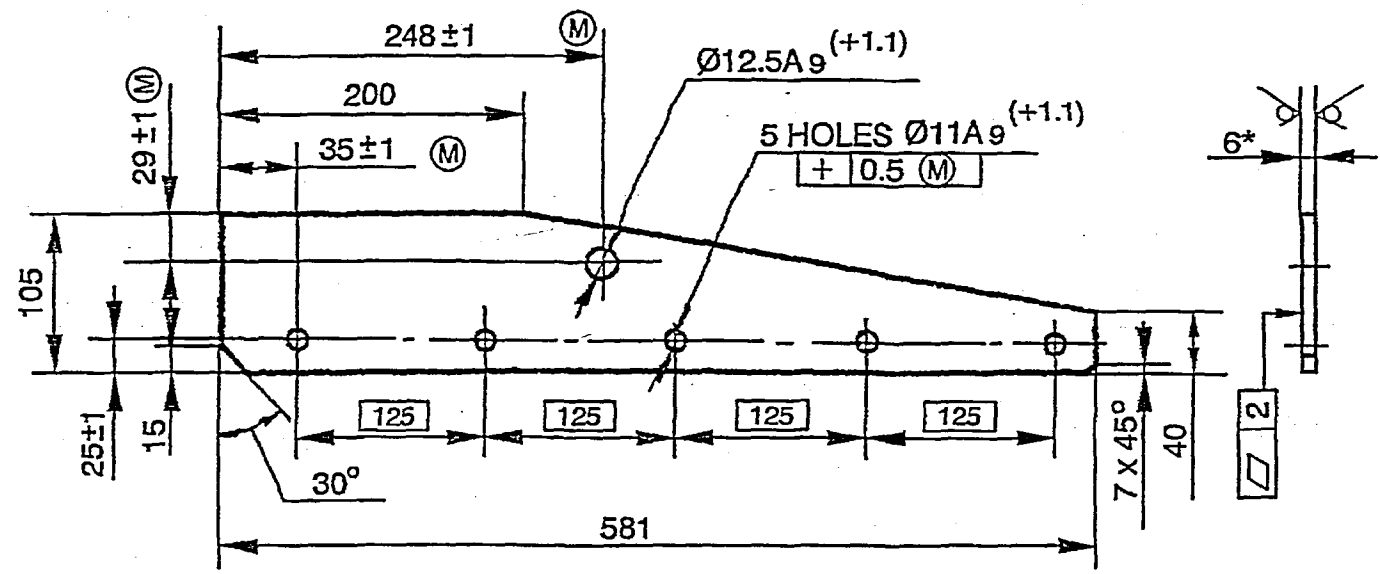
			DRN	Sd/=	MATERIAL :-	USED ON :- CQA(HV)5.04.013 (1B)
			CHD	Sd/=	SHEET 6 GOST 19903-74	172.04.244cb-2Cb
			APPD	Sd/=	15 GOST 1577-70	188.04.001cb-2Cb (1A) **
			DATE	30-03-88	CONTROLLERATE OF QUALITY ASSURANCE (HEAVY VEHICLES) AVADI	
			SCALE :- 1:1		TITLE :- STRAP	
			DIMENSIONS IN mm			
			TOLERANCE ON DIMNS UNLESS OTHERWISE STATED IS 2102 69			
1C	30.11.11	55150/CQA(HV)/DB/BLT T-72 DT.19.07.11	ALL THREADS TO CONFORM TO IS: 4218 Pt IV		D S CAT NUMBER	DRAWING NUMBER 175.04.044-A
1B	11.11.11	Lt.No.55159/CQA(HV)/DB/CIA/T-72 Dt.15.9.11	ISSUE	DATE	NATURE OF AMENDMENTS	
1A	09.10.03	N OF A No. CQA(HV)/T90/04/001.				
1	08.07.88	AMDT. LIST No.6 PART II BOOK -3				

F-22
23
SIZE A3

(B. S. AYAVELU, JTD) 02 MAR '07

"COMMON TO T-90" & BLT
 DRG RE-INDIANISED BASED ON RUSSIAN ORIGINAL ISSUE:- NIL

DRAWING NUMBER: 172.04.575
 SHEET No 1 OF 1
 UNLESS OTHERWISE SPECIFIED R_z630 ✓ (✓)



1. ALTERNATE MATERIAL :- SHEET 6.0 GOST 19903 - 74
20 GOST 1577 - 70
2. DEVIATION FROM PROFILE TEMPLATE CONSTRUCTED AS PER THE NOMINAL DIMENSIONS SHOULD NOT BE MORE THAN 1.5 mm .
3. PROFILE CORNERS MAY BE ROUNDED OFF TO R5 mm , MAXIMUM .
4. THE REST OF THE REQUIREMENTS ARE TO BE IN ACCORDANCE WITH 520 TY 1 .
5. * DIMENSION FOR REFERENCE .

PILOT SAMPLE SHOULD BE APPROVED BY A H S P BEFORE BULK PRODUCTION

EST WT (Kg) 2.258 TO BE STAMPED OR MARKED WHERE INDICATED THUS # (LETTERS)

ALL SHARP EDGES AND CORNERS TO BE REMOVED UNLESS OTHERWISE STATED MACHINED CORNERS TO HAVE R OUT SIDE R INSIDE EQUIVALENT CHAMFERS ARE PERMISSIBLE

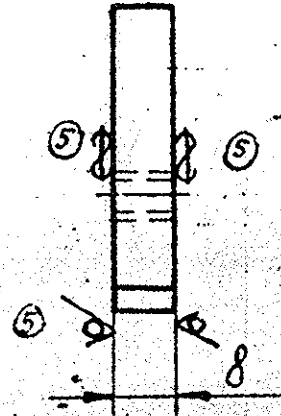
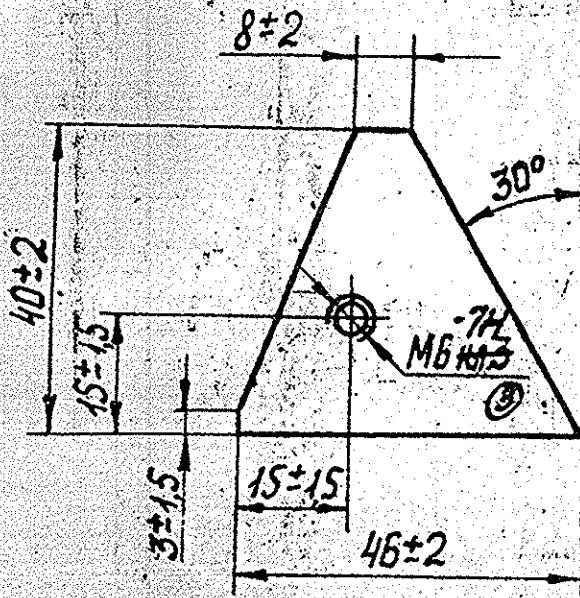
DRN	Sd/=	MATERIAL:- SHEET	USED ON:-
CHD	Sd/=	6.0 GOST 19903 - 74	172.04.188cbCb
APPD	Sd/=	15 GOST 1577 - 70	
DATE	29 - 03 - 88	CONTROLLERATE OF QUALITY ASSURANCE (HEAVY VEHICLES)	
SCALE :-	1 : 5	AVADI	
DIMENSIONS IN mm		TITLE :-	LEFT REAR RIB
TOLERANCE ON DIMNS UNLESS OTHERWISE STATED IS 2102 69			
ALL THREADS TO CONFORM TO IS : 4218 Pt IV		D S CAT NUMBER	DRAWING NUMBER
			172.04.575

F - 25
 37
 SIZE A3

ISSUE	DATE	NATURE OF AMENDMENTS



Восстановленный подлинник №1



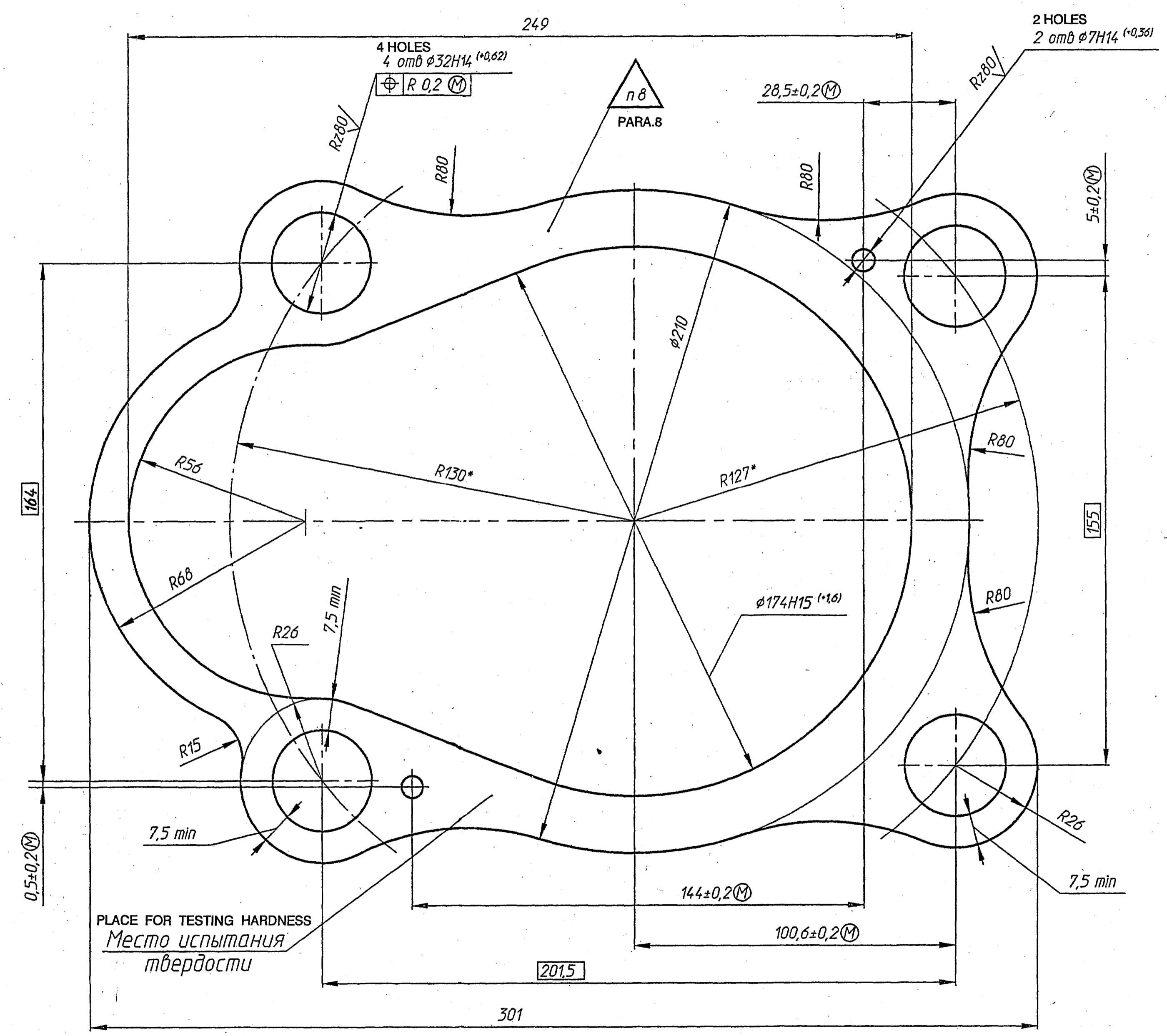
1. IT IS ALLOWED TO BE MANUFACTURED FROM OPEN - HEARTH STEEL 10, 20, 25 GOST 1577.70.
2. DRAFTINGS AND SHRINKAGE OF THE EDGES ARE ALLOWED.
3. SHARP CORNERS MAY BE ROUNDED OFF WITH R 3 MAXIMUM.
4. TOLERANCE ON THICKNESS AS PER GOST 19903-74.

ALT MATL:- STEEL SHEET 14 HR, SEC 2 TO
 BS-1449-Pt 1: 1983 OR D/DD
 TO IS-513: 1986 OR 'D'/'DD' TO
 IS-4030-62

			5340-176653		
0040-AVA			175.18.057		
29-3-09			GROUP NO. (F 117)		
17885-W			40001 K.A. 35		
7-2-94			SHEET		
ALT MATL ADDED.			MASS		
16478-W			SCALE		
23-10-86			10F1		
DRG SEALED			0.067		
ISSUE			1:1		
DATE			A4		
REFERENCE			MATERIAL: open hearth steel 15		
APPROVED			GOST 1577-70.		
CHECKED			C.Q.A (AVA) AVADI		
DRAWN					

Личн. и подл. Подпись и дата. ЭЗОН, личн. и личн. и дата. Подпись и дата.

Rz630/✓(✓)



1. Alternate material of components 175.51.033 - 03, 175.51.033 - 04 175.51.033 - 05 is Steel 30XГСА GOST 4543 - 71 with subsequent heat treatment. 255...321BHN; Components 175.51.033 - 04, 175.51.033 - 05 Steel 45 GOST 1050 - 88.
4. Deviation of component from outline template, made as per nominal dimensions to be 0⁺²mm
5. Tolerance of flatness of components 175.51.033 and 175.51.033 - 01 to be 0.5mm. Components 175.51.033 - 02 - 0.4mm; components 175.51.033 - 03, 175.51.033 - 04 and 175.51.033 - 05 - 0.3mm. Tolerance for flatness should be checked under load 20₂ Kg.
7. Coating: Chemical phosphating, oxidizing, oil finishing or chemical oxidizing oil finishing.
8. Not to be marked by punching.
9. *Dimension for reference.
10. Alternate material for components 175.51.033 - 03, 175.51.033 - 04 and 175.51.033 - 05 is special steel. Grade of steel, heat treatment, acceptance method and test should be as per existing specifications on component made of special steel low hardness. Requirement for the quality of edges formed are (flame cutting) should be as per OST B3 - 4302 - 88.
11. Grinding of gasket along thickness as required for assembly is allowed.
12. Other requirements should be as per specifications 520 TY 1.

Part No.	S, mm	Material	Weight, Kg	Hardness, BHN
175.51.033	2 ± 0.15	Steel 30XГСА GOST 4543 - 71	0.216	255...321
175.51.033 - 01	4 ± 0.2	Steel 30XГСА GOST 4543 - 71	0.432	255...321
175.51.033 - 02	6 ± 0.25	Steel 30XГСА GOST 4543 - 71	0.648	255...321
175.51.033 - 03	8 ± 0.3	Steel 40 GOST 1050 - 88	0.864	207...255
175.51.033 - 04	10 ± 0.35	Steel 40 GOST 1050 - 88	1.080	207...255
175.51.033 - 05	12 ± 0.4	Steel 40 GOST 1050 - 88	1.296	207...255

172.51.014cb-1Cb
172.51.015cb-1Cb
172.51.016cb-1Cb

COMMON TO T-72 & BLT
DRG. INDIANISED BASED ON RUSSIAN ORIGINAL ISSUE - 23

356
SUPPLY CODE
U-01-1-1
D90015
F-15
25
SIZE A3x3

PILOT SAMPLE SHOULD BE APPROVED BY A H S P BEFORE BULK PRODUCTION.

EST. WT (kg)	TO BE STAMPED OR MARKED WHERE INDICATED THUS # (LETTERS)
SEE TABLE	
ALL SHARP EDGES AND CORNERS TO BE REMOVED UNLESS OTHERWISE STATED MACHINED CORNERS TO HAVE R OUTSIDE R INSIDE EQUIVALENT CHAMFERS ARE PERMISSIBLE	
ISSUE	DATE
NATURE OF AMENDMENTS	

DRN	CHD	APFD	DATE	SCALE	DIMENSIONS IN mm	TOLERANCE ON DIMNS UNLESS OTHERWISE STATED IS : 2102 - 69	ALL THREADS TO CONFORM TO	DRN	DATE	NATURE OF AMENDMENTS
vos	Chanchal	Chanchal	26-3-04	1:1						
MATERIAL:- SEE TABLE								USED ON:- 172 51014Cb, 172 51015 cb, 172 51016 Cb		
CONTROLLERATE OF QUALITY ASSURANCE (HEAVY VEHICLES) AVADI								TITLE:- SHIM		
D S CAT NUMBER								DRAWING NUMBER 175.51.033		

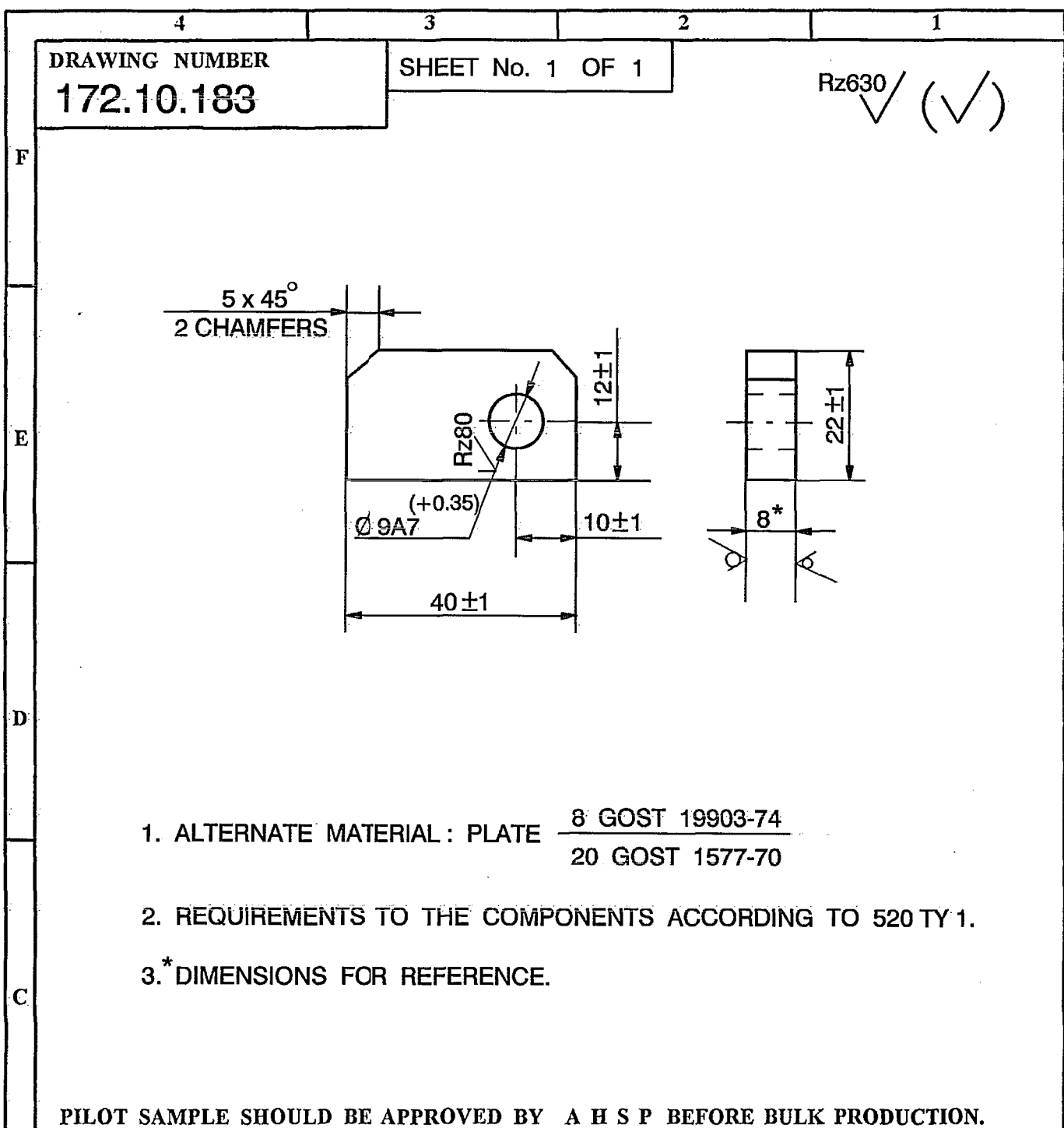
THE
MAGAZINE
OF THE
AMERICAN
MUSIC

THE
MAGAZINE
OF THE
AMERICAN
MUSIC

THE
MAGAZINE
OF THE
AMERICAN
MUSIC

DRG. REINDIANISED BASED ON RUSSIAN ORIGINAL ISSUE - 1 (R. RAMANI, JTD)
28-12-05
COMMON TO T-90

F-30
17



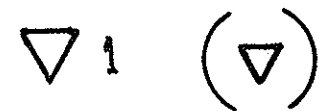
1. ALTERNATE MATERIAL : PLATE 8 GOST 19903-74
20 GOST 1577-70
2. REQUIREMENTS TO THE COMPONENTS ACCORDING TO 520 TY 1.
- 3.* DIMENSIONS FOR REFERENCE.

PILOT SAMPLE SHOULD BE APPROVED BY A H S P BEFORE BULK PRODUCTION.

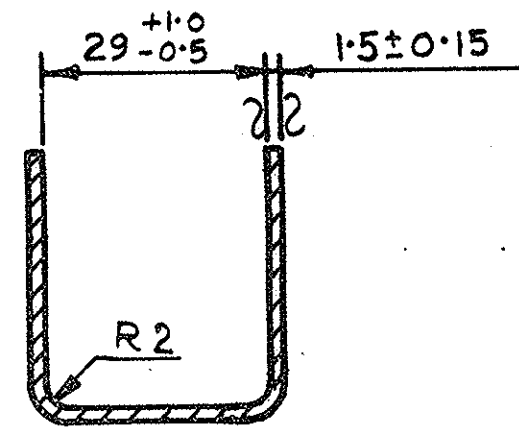
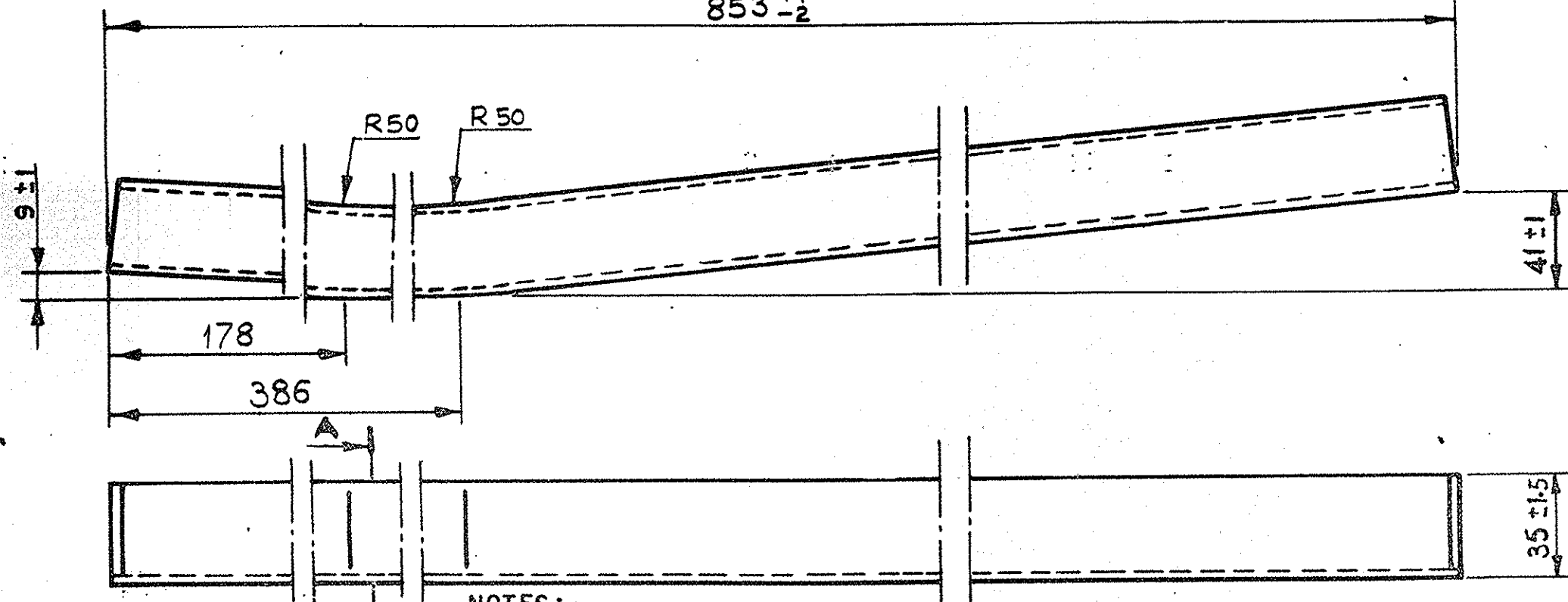
			EST. WT. (Kg)	TO BE STAMPED OR MARKED WHERE INDICATED THUS # (LETTERS)
			0.056	
			ALL SHARP EDGES AND CORNERS TO BE REMOVED UNLESS OTHERWISE STATED MACHINED CORNERS TO HAVE R OUTSIDE R INSIDE EQUIVALENT CHAMFERS ARE PERMISSIBLE.	
			MATERIAL :- SHEET	USED ON :-
			8 GOST 19903-74	188.10.098cb-1Cb (1A)
1A	5.2.04	N OF A.No.CQA(HV)/T-90/10/001	15 GOST 1577-70	172.10.014cb-3
ISSUE	DATE	NATURE OF AMENDMENTS		
DRN	Sd/=	SCALE :- 1 : 1	CONTROLLERATE OF QUALITY ASSURANCE (HEAVY VEHICLES) AVADI	
CHD	Sd/=	DIMENSIONS IN mm		
APPD	Sd/=	TOLERANCE ON DIMENSIONS UNLESS OTHERWISE STATED IS : 2102 - 69	TITLE :- BOSS	
DATE	01.11.88	ALL THREADS TO CONFORM TO	D S CAT NUMBER	DRAWING NUMBER 172.10.183
SIZE A4				

PART No
175. 28. 006

ALT MATL :-
STEEL STRIP GRADE 14 HR/HS OR 4HR/MS OR
4CR/CS SEC 2 BS: 1449 Pt 1-83 OR 'D' GRADE
IS: 513-86



853 ⁺¹/₋₂



SCALE 1:1
SECTION A-A

NOTES:-

1. IT IS ALLOWED TO MANUFACTURE FROM OPEN HEARTH STEEL 20-4-II AND 10 KA-5-II f, GOST 16523-70.
2. NON-FLATNESS OF THE COMPONENT AS CHECKED ON BOTTOM SURFACE SHOULD NOT EXCEED 2mm.
3. ROUNDING OF CORNERS TO R 3mm AND TOOL MARKS ARE ALLOWED
4. IT IS ALLOWED TO MANUFACTURE THE COMPONENT BY CUTTING ALONG THE LINES OF BEND WITH SUBSEQUENT BUTT WELDING. IN THIS CASE, THE WELDED WALLS SHOULD LIE IN THE SAME PLANE.
5. NATURAL THINNING OF THE METAL AT BENDS IS ALLOWED.

जाची कई सही प्रति
CERTIFIED CORRECT COPY OF
मुद्रित रेखाचित्र की
SEALED DRAWING AS ON

कृते नियंत्रक गुणत
FOR CONTROLLER OF QUALITY
37-1-88 (क वा 37) आवडि चेन्ने - 54
43-1-88 (क वा 37) आवडि चेन्ने - 54

GROUP No
40001 KD F 128
6

11-02-10	0055-AVA	DS CAT No. ADDED		
22-10-86	18214-W	HINDI NO MEN ADDED		
5-3-94	17913-W	ALT MATL ADDED.		
28-1-88		RETRACED WITHOUT CHANGE		
DATE	AUTHORITY	ZONE	NATURE	SIG AHSP

DRAWN:- CHD:- ASSY DRG :-
TRACED:- *[Signature]* CHD:- *[Signature]* DATE:-
C/D¹ MAN. DO FOR CQA(W) EST MASS:- 1.0

CQA(AVA)AVADI
SCALE:- 1:2

AMENDMENTS
DRG SEALED:- DC (I) No 16476-W
DATE 22-10-86

MATERIAL:- OPEN-HEARTH STEEL 15-A-II GOST 16523-70
PROTECTIVE FINISH:-

DESIGN No.
PART No

केसिंग लेफ्ट-हैंड

CASING LEFT-HAND

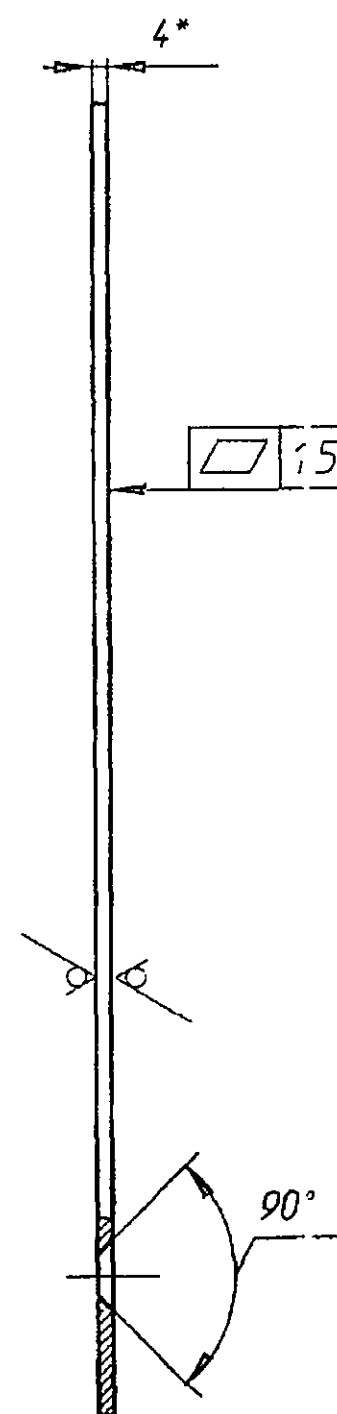
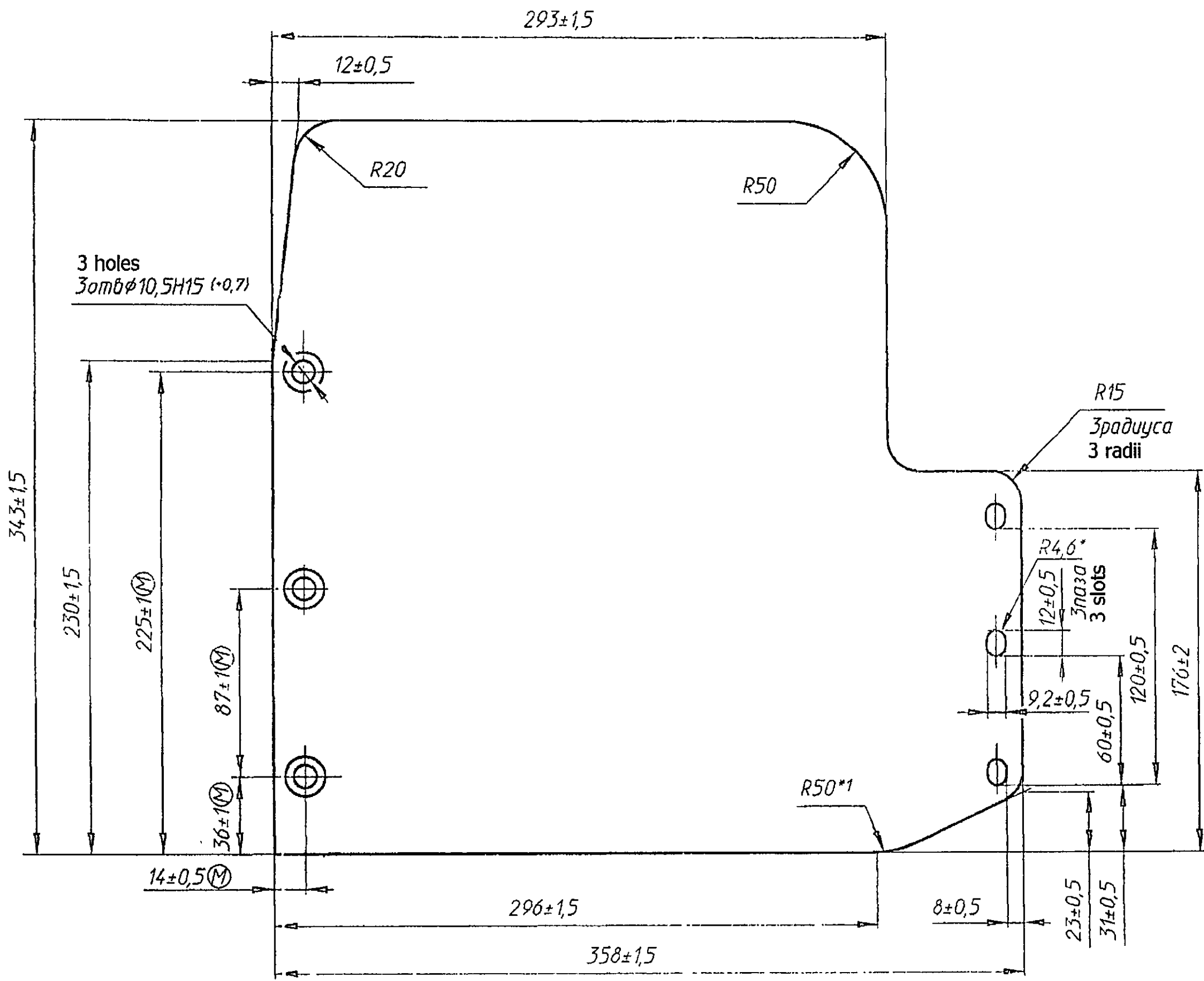
175. 28. 006 26
DS CAT No
3040-022786

600'18'88T



Rz500 ✓ (✓)

इसे नियंत्रक
 - यंत्रणा आवासन नियंत्रणालय
 त.सं. (आई) 2409-I(P) दिनांक 25.11.96



1. Material-replacement-sheet 4 GOST 19903-74
2. * Размеры для справок. 15-TB1-M1-KYB1-TO GOST 1577-93
3. *1 Размер обеспечить инструментом.
4. Остальные требования по 520.TY1.

1. Alternate material sheet 4 GOST 19903-74
15-TB1-M1-KYB1-TO GOST 1577-93
2. * Dimensions for reference.
3. *1 Dimension should be ensured by tool
4. Other requirements are as per 520.TY1.

D.C.-2409-I(P), DRG. PROJ. SEALED	CHD	SIG	DATE
			25.11.96

ISSUE SHEET		REFERENCE	188.81.009	Sup. Code	Fold. No.	Sl.no.
APPROVED				U-01-1-4	112	93
CHECKED			PLATE	Weight (kgs)	Scale	
DRAWN				3.39	1:2	
			Sheet 4 GOST 19903-74 10кн-TB1-M1-TO GOST 1577-93	Page	Page total	
						1
			HEAVY VEHICLES FACTORY AVADI			

D.C.-2409-I(P),
 Справ №,
 Подп. и дата,
 Взам инв №,
 Инв № дробл,
 Инв № подл

